

eMini-Setup

Quick Start Guide

Overview

Available for both Windows or macOS, the AJA eMini-Setup application provides a graphic interface for configuring network (IP) settings, updating device software, and other features.

AJA's eMini-Setup application allows you to initially communicate with and configure supported AJA products using a direct USB connection. After initial IP configuration over USB, the supported product can then be controlled using an Ethernet network and browser, to access the product's internal 'WebUI' (Web-based User Interface) server. It can thereafter be configured and operated exclusively using the WebUI. The USB cable may then be removed, if desired.

NOTE: The AJA IPT-10G2 and IPR-10G2 Series Mini-Converters may use eMini-Setup for initial configuration as well as for full operational control, in addition to their WebUI servers. Therefore if you (optionally) do not plan to use the WebUI to operate your Mini-Converter, then you may skip the IP configuration steps described in this guide, and keep the USB cable connected for eMini-Setup use.

Overview of the General Procedure

In this guide, you will find the procedure steps to complete the following:

- Acquire eMini-Setup from the AJA website;
- Install the eMini-Setup application onto a computer;
- Connect the supported product to USB;
- Launch the eMini-Setup application; and
- Configure the device IP using the 'Primary Network', 'Control Network' or 'Network' tab (depending upon the device).

For some products, you can also use eMini-Setup to load updated firmware to the device, although this is typically done using the device's WebUI.

Acquiring Full Product Manual

To download the full user manual for your AJA product, which will have additional information on using all of eMini-Setup's tabs for that particular product:

1. Navigate to your product page at www.aja.com.
2. Choose Downloads.
3. Select Manuals.
4. Download the AJA Product's User Guide ('Manual').

Acquiring eMini-Setup

Download the eMini-Setup installer from the AJA website:

1. Go to: <https://www.aja.com/products/aja-eminisetup>

2. Click the 'Downloads' tab (below the photo of the laptop).
3. Click 'Software'.
4. Click on the eMini-Setup version for either Windows or macOS.
5. Continue with the installation procedure for each OS below.

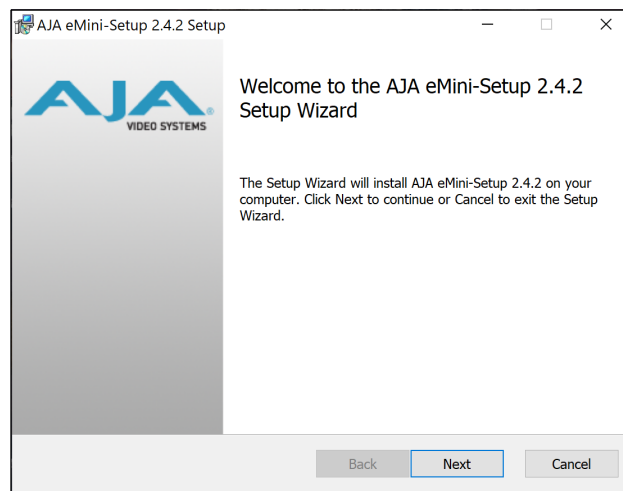
Installing eMini-Setup

PC Installation

To install eMini-Setup on a Windows PC:

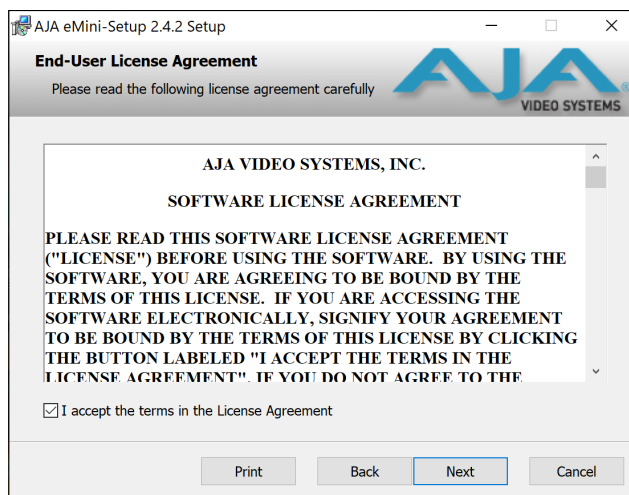
1. Download the application from the AJA website. See ["Acquiring eMini-Setup" on page 1](#).
2. Open the AJA_eMini-Setup_win.zip file.
3. Double-click on the AJA_eMini-Setup.msi file.
4. The Setup Wizard will guide you through the installation as we illustrate below.

Figure 1. eMini-Setup PC Wizard



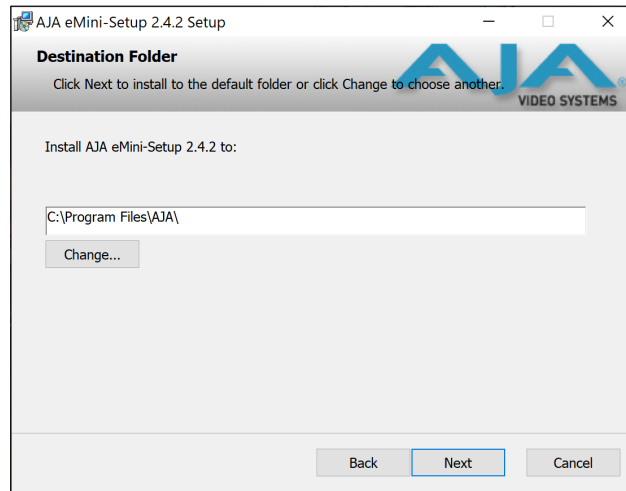
5. Click Next to begin the Setup Wizard.

Figure 2. Software License Agreement



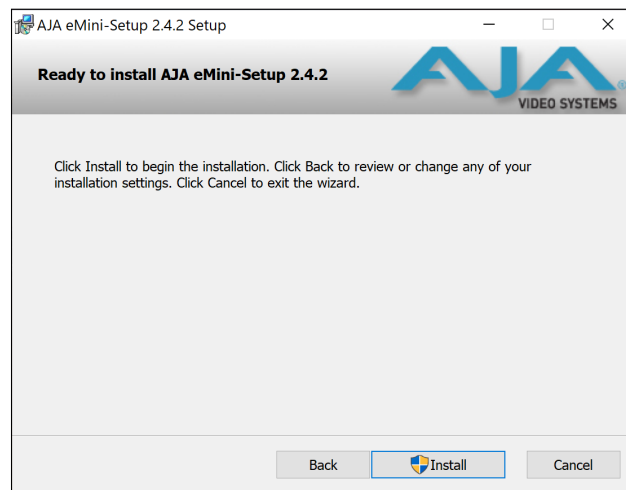
6. Check the "I Accept the terms..." Checkbox.
7. Click Next to accept the software license.

Figure 3. Accept Installation Destination Folder



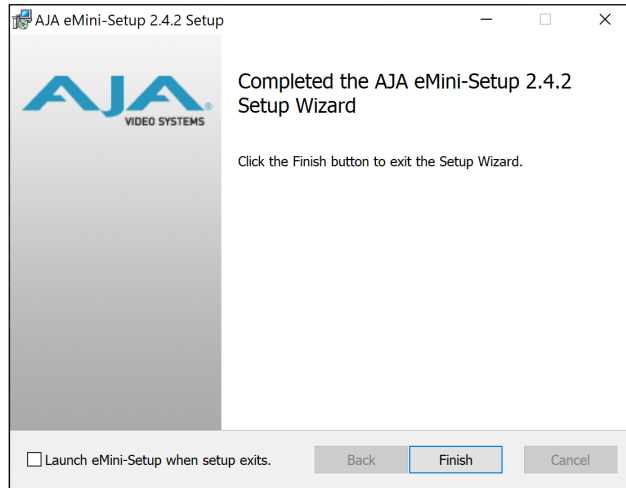
8. Click Next to accept the destination folder on your computer (after adjusting it if necessary).

Figure 4. Launch the installation



9. Click Install.

Figure 5. Finish the installation

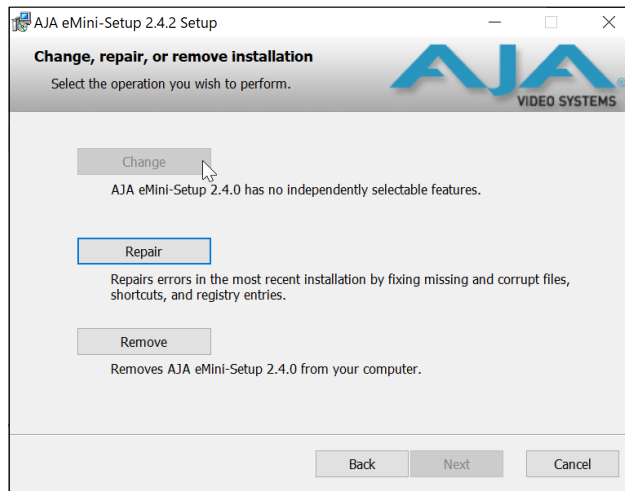


10. Click Finish.

NOTE: If the eMini-Setup application already exists on the PC, the following dialog window appears. In some instances, Windows may require uninstalling an earlier version of eMini-Setup before installing a new version.

Re-Installation

Figure 6. eMini-Setup Wizard, Re-installation



With this screen you can **Repair** (reinstall) or **Remove** (uninstall) eMini-Setup on the PC.

NOTE: After initial installation and/or at other times, Windows application icons can sometimes become hidden on the desktop. Several possible solutions exist, the easiest being to right-click on the desktop, select View, and checkmark 'Show Desktop Icons'.

Mac Installation

To install the application on a Mac:

NOTE: Intel and Apple silicon based CPUs are supported for use with AJA eMini-Setup software.

1. Download the application from the AJA website. See "[Acquiring eMini-Setup on page 1](#)".
2. Open the eMini-Setup folder that you will find in your computer's downloads folder.
3. Double-click on the 'AJA eMini-Setup_(n.n.n.n).dmg' file.

Figure 7. Selecting the Installer File

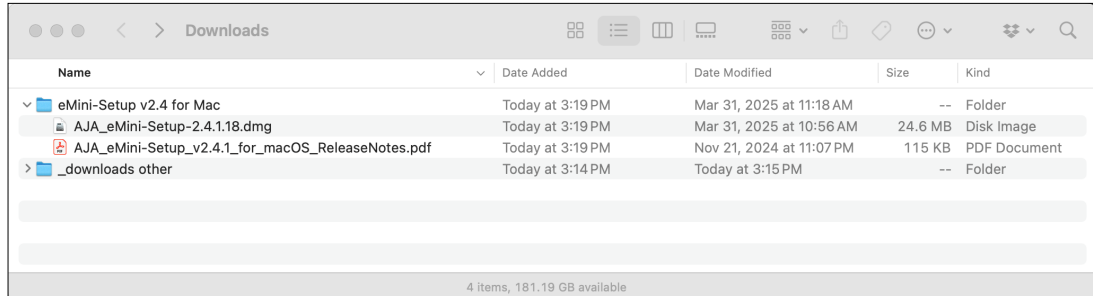
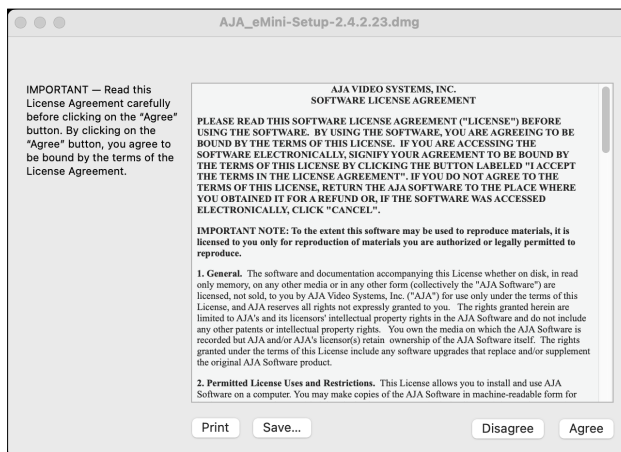
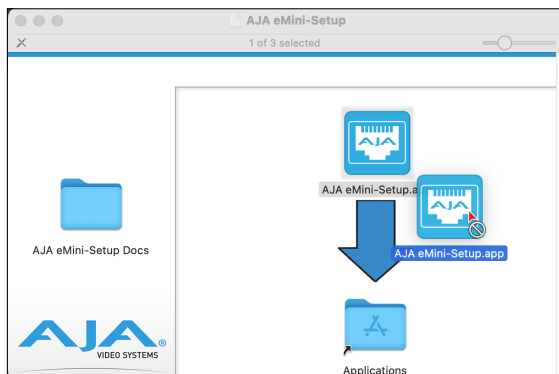


Figure 8. Accepting the Software License



4. Click Agree.

Figure 9. eMini-Setup Mac Installer

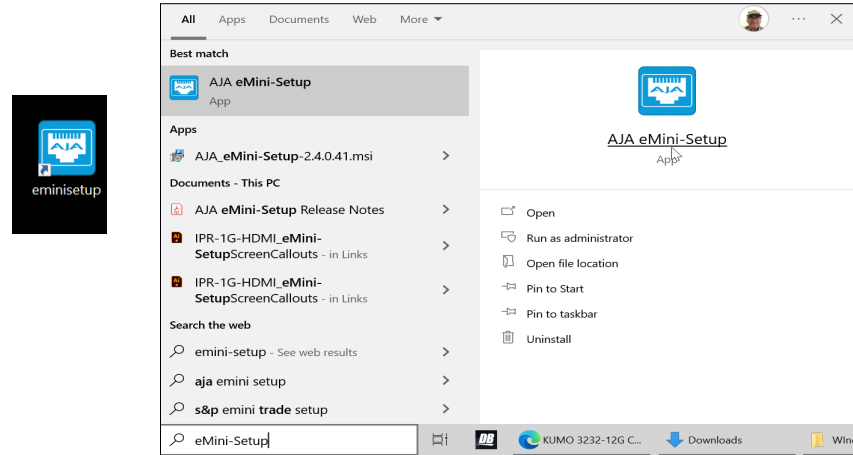


5. To complete the installation drag the “AJA eMini-Setup” icon to the Applications folder icon.

Windows Startup

To run eMini-Setup on a Windows PC, double-click on the AJA eMini-Setup icon on your desktop. Or use the Windows Task Bar Search to enter "eMini-Setup" and the Icon to launch the installed application will appear.

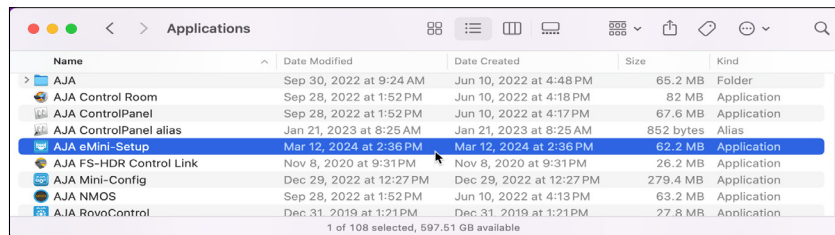
Figure 10. Launching eMini-Setup application on Windows



macOS Startup

To run eMini-Setup on a Mac, open the Applications folder and locate the AJA eMini-Setup application. Double-click the application to launch it.

Figure 11. Launching eMini-Setup application on macOS



Using eMini-Setup

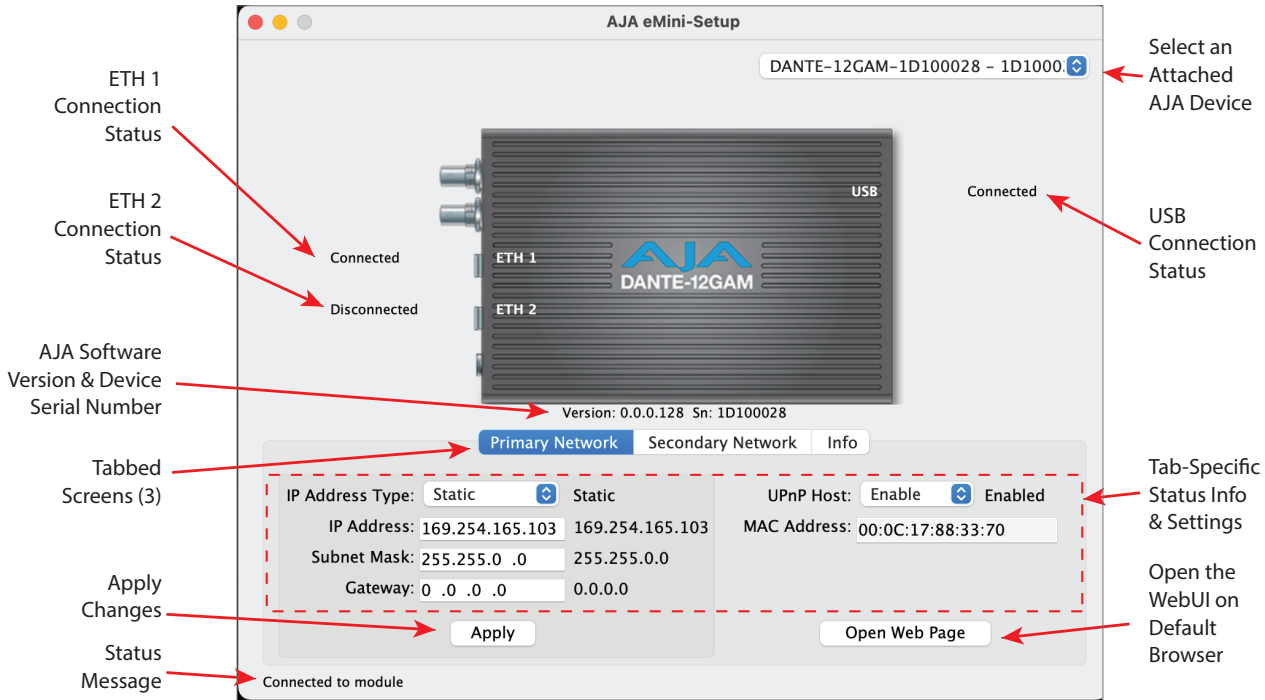
1. If not previously done, connect power to your AJA device.
2. Using the supplied USB cable, connect the USB port on the device to the computer running eMini-Setup.
3. Run eMini-Setup. (See Startup for either macOS or Windows, above).

The eMini-Setup application provides a graphical user interface for viewing settings and modifying settings.

AJA eMini-Setup Application Window

The eMini-Setup application appears as one compact window showing the state of the AJA mini-converter device as well as all of its input and output connections. Depending upon the AJA product, the application window has two or more tabbed panes at the bottom, with various controls that appear separately within each tab when selected. Below we show an example of a compatible AJA mini-converter product, the DANTE-12GAM and its eMini-Setup Screen:

Figure 12. Guide to the eMini-Setup Screen (DANTE-12GAM)



AJA Device Selection Menu

Selecting an AJA device with the pull-down menu on the upper right connects eMini-Setup to that AJA device.

NOTE: Only USB-connected and compatible AJA devices* will appear in this menu.

IMPORTANT: Use of a USB hub with eMini-Setup is not recommended, due to sometimes unstable connection(s). If necessary, use a high-quality hub, having its own independent power. If you have any issues with USB, contact AJA support.

NOTE: *The AJA eMini-Setup application is only compatible with certain specific AJA products. These are detailed on the eMini-Setup software product features page. See <https://www.aja.com/products/aja-emini-setup#features>

USB Connection Status

Shows status of connection between the AJA device and the host computer.

eMini-Setup Tab-Specific Status Info & Settings

The area immediately below the navigation tabs contains the status and user-adjustable control options for that tab.

eMini-Setup AJA Device Identification

- Version - The version of firmware installed in the AJA device is displayed below the graphic.
- Sn - This is the factory set unique serial number of your AJA device. If you ever call AJA Support for service, you may be asked for this number.

IP Address Type

IP Address Type determines the type of TCP/IP network configuration to be used. DHCP enables connecting to the network DHCP server, which assigns the IP Address, Netmask, and Gateway automatically. Static lets you set these parameters manually.

DHCP (default) - Selects automatic IP address assignment from the LAN DHCP server. If a DHCP server cannot be found, most often the AJA mini-converter will fall back to the previously entered Static IP address. If no Static IP address had been entered, the system fails over to a link local static IP address (169.254.x.x).

Static - Assigns a static IP address manually. Choose from:

- DHCP
- Static IP Address

IP Address

IP Address determines a static IP address to be used for TCP/IP networking. Consult your network administrator about how to set this value.

- If IP Address Type is set to DHCP, the IP address is set automatically by the network DHCP server.
- If IP Address Type is set to Static, enter an IP address compatible with your LAN.
- If IP Address Type is set to DHCP and there is a DHCP failure, the IP address is set to a link local static IP address. The current IP address is displayed when an IP Address Type of **Static** is selected. A different static IP address can be entered.

Subnet Mask

The current Subnet Mask is displayed. A different netmask can be entered.

Subnet Mask determines the subnet mask to be used for TCP/IP networking.

- Use a subnet mask compatible with your LAN. This is only needed for Static IP configurations. The factory default Subnet Mask is 255.255.0.0.
- If IP Address Type is set to DHCP, the Subnet Mask is set by the DHCP server and cannot be changed by the user.

Gateway

The current Gateway address is displayed. A different Gateway can be entered. Gateway determines the gateway or router used on your LAN for TCP/IP networking.

IMPORTANT: Without a properly configured Gateway address (whether you have a router/gateway or not), when you open your device's WebUI in a browser on its connected host computer, its Network panel will be unable to see other AJA devices on the network, even though you can control your device.

Without a proper Gateway address defined, the discovery feature of the WebUI Network panel will not list other AJA devices at all, even though they may be physically connected to the same network; it will only list your AJA device.

- Use a default gateway or router address. This is only needed for Static IP configurations.
- If IP Address Type is set to DHCP, the Default Gateway is set by the DHCP server and cannot be changed by the user.

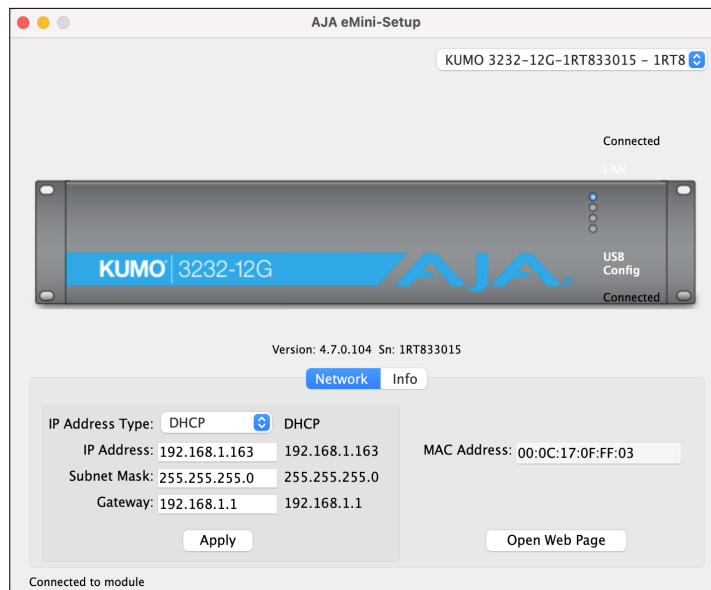
If your AJA device needs to communicate to servers on another LAN or WAN, then you will have to enter the address of the computer/router that is making that external connection.

If all of your AJA devices, and the computer system(s) they need to 'talk' to, are on a single LAN (and on the same subnet), then you may enter any unused LAN address (on that subnet) as the Gateway.

AJA Device IP Configuration

1. Depending upon the AJA product, click to select and open either the "Primary Network", "Control Network" or the "Network" tab.
2. Configure the device's network settings. (See the previous section above for details on each of the IP configuration parameters.) For example, we show the KUMO 3232-12G Network tab below:

Figure 13. KUMO 3232-12G Network tab



NOTE: Each product's eMini-Setup Network tab varies slightly in appearance.

DHCP will be enabled by default, and if the device is connected to a DHCP server the IP address field will populate. You may also select a manual IP Address Type and enter the address, subnet mask and gateway information on this tab.

3. Once your IP configuration is completed, type in (or Copy/Paste) the IP address into a web browser.

There is also an 'Open Web Page' button on the Network tab that will open the device's WebUI in the default web browser on your computer.

4. Use the WebUI to fully configure, control and use your AJA device.

NOTE: When using manual IP addressing, you may find it convenient to 'bookmark' or 'favorite' the IP address in your browser for easy access later. However, when using DHCP, note that bookmarks may fail later if the DHCP server reassigns the device's IP address, causing the browser to show a "Server Not Found" error.