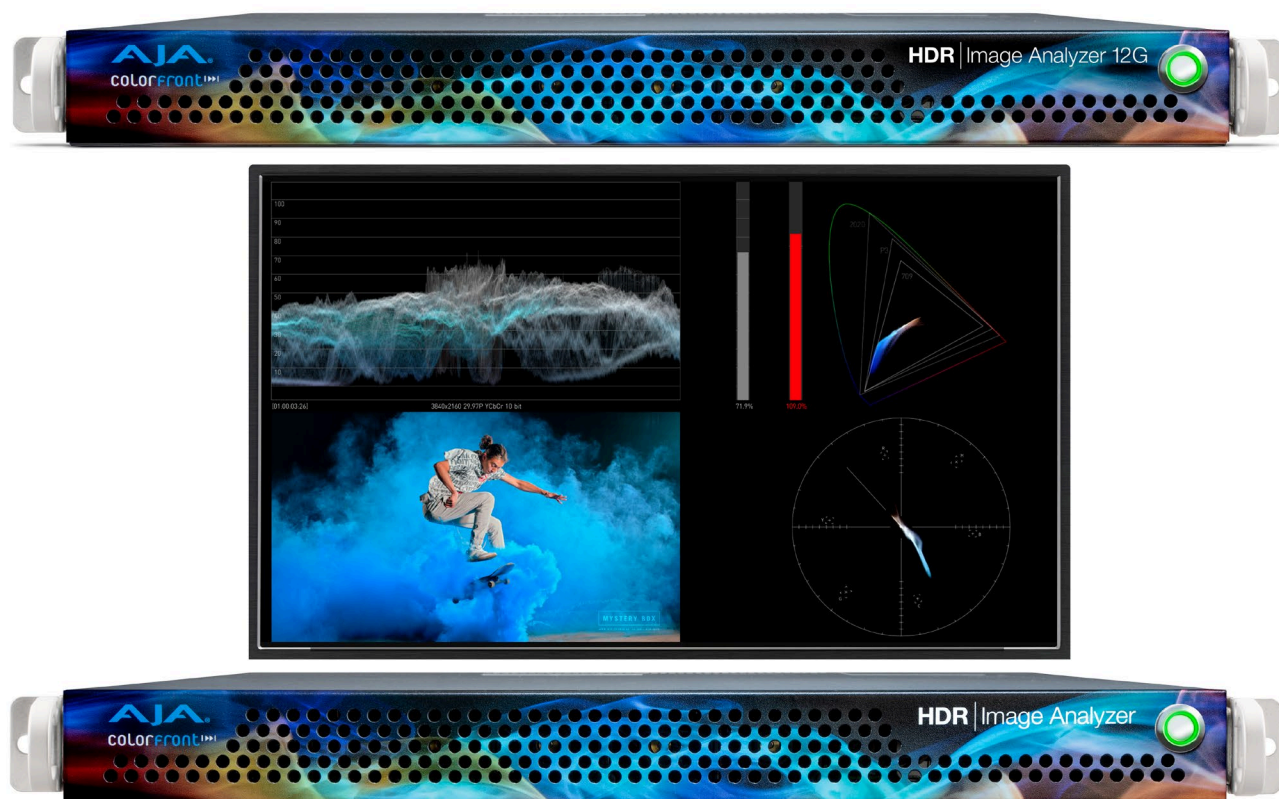


# HDR Image Analyzer

## HDR Monitoring Solution



## Installation and Operation Guide

Version 2.0  
Published February 10, 2020

colorfront

**AJA**  
VIDEO SYSTEMS

# Notices

---

## Trademarks

---

AJA® and Because it matters.® are registered trademarks of AJA Video Systems, Inc. for use with most AJA products. AJA™ is a trademark of AJA Video Systems, Inc. for use with recorder, router, software and camera products. Because it matters.™ is a trademark of AJA Video Systems, Inc. for use with camera products.

Corvid Ultra®, Io®, Ki Pro®, KONA®, KUMO®, ROI® and T-Tap® are registered trademarks of AJA Video Systems, Inc.

AJA Control Room™, KiStor™, Science of the Beautiful™, TruScale™, V2Analog™ and V2Digital™ are trademarks of AJA Video Systems, Inc.

All other trademarks are the property of their respective owners.

## Copyright

---

Copyright © 2020 AJA Video Systems, Inc. All rights reserved. All information in this manual is subject to change without notice. No part of the document may be reproduced or transmitted in any form, or by any means, electronic or mechanical, including photocopying or recording, without the express written permission of AJA Video Systems, Inc.

## Contacting AJA Support

---

When calling for support, have all information at hand prior to calling. To contact AJA for sales or support, use any of the following methods:

Telephone	+1.530.271.3190
FAX	+1.530.271.3140
Web	<a href="https://www.aja.com">https://www.aja.com</a>
Support Email	<a href="mailto:support@aja.com">support@aja.com</a>
Sales Email	<a href="mailto:sales@aja.com">sales@aja.com</a>

# Contents

---

Notices . . . . .	2
Trademarks . . . . .	2
Copyright . . . . .	2
Contacting AJA Support . . . . .	2
Chapter 1 – Introduction . . . . .	5
Overview . . . . .	5
Software Features . . . . .	5
Hardware Features . . . . .	6
Chapter 2 – HDR Image Analyzer Hardware . . . . .	7
Overview . . . . .	7
Chassis Front . . . . .	7
Chassis Rear . . . . .	7
Chapter 3 – System Installation . . . . .	9
Installation Summary . . . . .	9
Hardware Installation . . . . .	9
Shipping Box Contents . . . . .	9
Rack Mounting the Chassis . . . . .	9
Network Configuration . . . . .	10
Initial System Startup . . . . .	10
Software Update . . . . .	10
Update with USB stick . . . . .	10
Update Using Web Browser . . . . .	11
Licensing . . . . .	11
Chapter 4 – HDR Image Analyzer GUI . . . . .	12
Overview . . . . .	12
Views . . . . .	12
Drop-Down Menu Navigation . . . . .	14
Selecting Views with Keyboard . . . . .	14
Analyzer Modes . . . . .	15
Framing Guides . . . . .	22
Timecode on Image . . . . .	22
Audio Monitoring . . . . .	23
Audio Phase Meter . . . . .	23
Audio Level Meter . . . . .	24
Pixel Picker . . . . .	25
Log Data . . . . .	25
Info Page . . . . .	26
Other Features . . . . .	26
Chapter 5 – Using HDR Image Analyzer . . . . .	27
HDR Image Analyzer Setups . . . . .	27
Video Menu . . . . .	28
Resolution . . . . .	28
Colorspace . . . . .	28
Transport . . . . .	29
Square Division . . . . .	29
Auto Detect Options . . . . .	29
Capture . . . . .	29
Recall . . . . .	29
Screenshot . . . . .	29
Analyzer Colorspace and Range . . . . .	30
Auto HDR Mode Change . . . . .	30
Camera Log Analysis . . . . .	30
SDR Analysis . . . . .	31
HLG Analysis . . . . .	31

HDR Analysis . . . . .	31
CIE xy Gamut View . . . . .	31
YCbCr Matrix . . . . .	32
White Point Compensation . . . . .	33
False Color . . . . .	33
Pixel Picker . . . . .	34
Single Line Mode . . . . .	34
LUTs . . . . .	35
Overview . . . . .	35
Logging . . . . .	37
Settings Screen . . . . .	37
GUI Tab . . . . .	38
QC Tab . . . . .	38
NETWORK Tab . . . . .	40
SAFE AREA Tab . . . . .	41
<b>Chapter 6 – Web Interface . . . . .</b>	<b>43</b>
Overview . . . . .	43
Operation . . . . .	43
Web Interface Description . . . . .	43
Web Interface Screens . . . . .	45
Settings Screen . . . . .	45
Screenshots Screen . . . . .	46
LUT Screen . . . . .	47
Logs Screen . . . . .	47
Status Screen . . . . .	48
Network Screen . . . . .	48
Firmware Screen . . . . .	49
<b>Chapter 7 – Menu Reference . . . . .</b>	<b>50</b>
Analyzer Menu Guide . . . . .	50
Setup Menu Guide . . . . .	53
Video Menu Guide . . . . .	53
Log Menu Guide . . . . .	54
Help Menu Guide . . . . .	55
Other Keyboard Shortcuts . . . . .	55
<b>Appendix A – Specifications . . . . .</b>	<b>56</b>
HDR Image Analyzer 3G Tech Specs . . . . .	56
Video Formats . . . . .	56
HDR Image Analyzer 12G Tech Specs . . . . .	57
<b>Appendix B – Safety and Compliance . . . . .</b>	<b>59</b>
<b>Colorfront Copyright Notices . . . . .</b>	<b>68</b>
<b>SOFTWARE LICENSE AGREEMENT . . . . .</b>	<b>69</b>
<b>Warranty and Liability Information . . . . .</b>	<b>72</b>
Limited Warranty on Hardware . . . . .	72
Limitation of Liability . . . . .	72
Governing Law and Language; Your Rights . . . . .	72
<b>Index . . . . .</b>	<b>74</b>



# Chapter 1 – Introduction

---

## Overview

---

AJA's HDR Image Analyzer simplifies monitoring and analysis of SDI video HDR and WCG content in production, postproduction, quality control (QC) and mastering. Tools include waveform, histogram, and vectorscope displays, and nit-level HDR monitoring. The HDR Image Analyzer can also monitor embedded audio levels and phase.

Combining AJA's production-proven and powerful video and audio I/O with HDR analysis tools from Colorfront in a compact 1RU chassis, the HDR Image Analyzer offers a flexible solution for monitoring and analyzing HDR formats including PQ (Perceptual Quantizer), Hybrid Log Gamma (HLG) and Rec2020 for up to 8K/ UltraHD2 workflows. Colorfront has exclusively licensed its Colorfront Analyzer software to AJA.

Two models of AJA's HDR Image Analyzer are available:

- HDR Image Analyzer: HDR-IMGYZR-88 (3G-SDI model)
- HDR Image Analyzer 12G: HDR-IMGYZR-12G (12G-SDI model)

## Software Features

---

Both HDR Image Analyzer models have identical functionality, except as indicated below:

### Shared HDR Image Analyzer features

---

- Precise, high quality UltraHD UI for native-resolution picture display
- Advanced out-of-gamut and out-of-brightness detection with error tolerance
- Support for SDR (Rec709), ST2084/PQ and HLG analysis
- CIE graph, Vectorscope, Waveform
- Color gamut, including out-of-gamut false color mode to easily spot out-of-gamut/out-of-brightness pixels
- Data analyzer with pixel picker
- Up to 8K/UltraHD2 60p over 12G-SDI inputs (HDR Image Analyzer 12G only)
- Up to 4K/UltraHD 60p over 4x 3G-SDI inputs
- SDI auto signal detection
- File base error logging with timecode
- Display and color processing look up table (LUT) support
- Line mode to focus on a single horizontal line as the region of interest
- Loop through output to broadcast monitors
- Still store
- Nit levels, audio levels, and audio phase metering
- Built-in support for colorspaces (including camera colorspaces)
- 12-bit RGB input support
- PQ display over DisplayPort for compatibility with HDR displays
- Desktop mirroring via DisplayPorts
- Web interface for configuration and control
- Remote desktop support

## Unique HDR Image Analyzer 12G Features

---

- 12G-SDI support
- 8K and UltraHD2 support
- Four bi-directional SDI connections, configured using software
- SDI Loop through options:
  - SDI input count: 4 -> no loop through available
  - SDI input count: 2 -> SDI 1 loops to SDI 3, SDI 2 loops to SDI 4 for every supported mode
  - SDI input count: 1 -> SDI 1 loops to SDI 3

## Unique HDR Image Analyzer (3G) Features

---

- Four uni-directional SDI connections, configured using software
- SDI Loop through options:
  - SDI In and Out Loop through available for all supported formats and transports, including quad link inputs

# Hardware Features

---

## Shared HDR Image Analyzer Hardware Features

---

- One RU height rack mountable chassis
- Hot swappable redundant power supplies
- Two Network Interface Cards
- Four USB 3.0 connectors
- Three year warranty

## Unique HDR Image Analyzer 12G Hardware Features

---

- HD-BNC twist-lock SDI connectors, HD-BNC to BNC adapters included
- Three DisplayPort outputs
- One DisplayPort over USB-C output

## Unique HDR Image Analyzer (3G) Hardware Features

---

- DIN 1.0/2.3 slide lock SDI connectors, DIN 1.0/2.3 to BNC adapters included
- Four DisplayPort outputs

# Chapter 2 – HDR Image Analyzer Hardware

## Overview

AJA's HDR Image Analyzer is a 1RU hardware appliance equipped with AJA input and output. The system is designed for immediate use, automatically powering up to the Colorfront Analyzer application.

## Chassis Front

*Figure 1. HDR Image Analyzer Chassis Front View*



### Chassis Power Button

The main power switch is used to apply or remove power from the power supply to the system. Turning off system power with this button removes the main power but keeps standby power supplied to the system. Therefore, you must unplug all system power cords before servicing.

## Chassis Rear

*Figure 2. HDR Image Analyzer 3G Chassis Rear View*

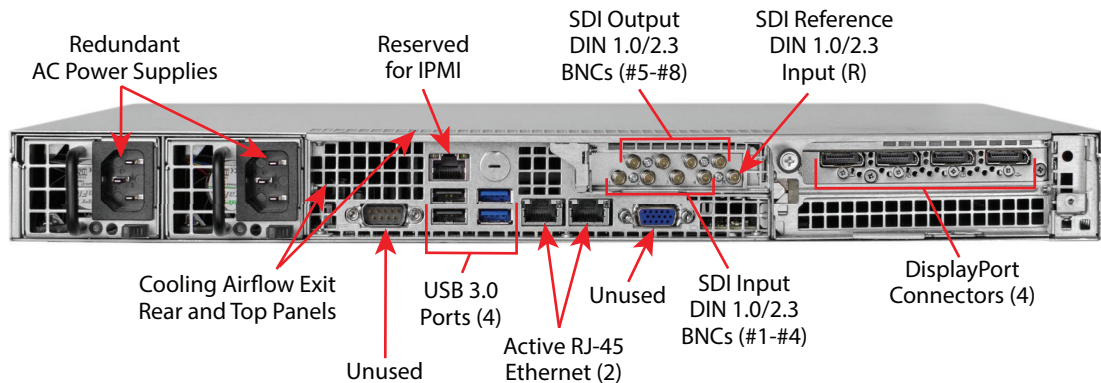
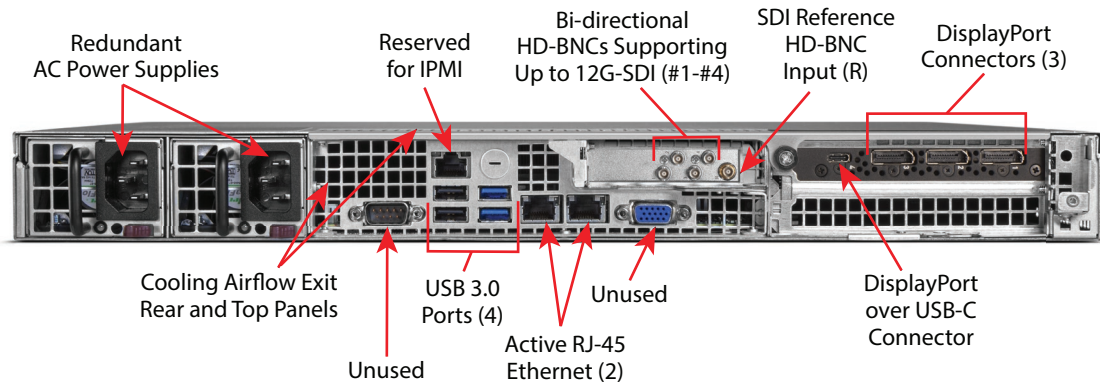


Figure 3. HDR Image Analyzer 12G Chassis Rear View



#### Rear Panel Power Supply LEDs

On the rear of each power supply module an LED indicates its status as follows.

- Solid Green: When illuminated, indicates that the power supply is on.
- Solid Amber: When illuminated, indicates the power supply is plugged in and turned off, or the system is off but in an abnormal state.
- Blinking Amber: When blinking, this system power supply temperature has reached 63°C. The system will automatically power-down when the power supply temperature reaches 70°C and restarts when the power supply temperature goes below 60°C.

# Chapter 3 – System Installation

---

## Installation Summary

---

1. Unpack the shipping box, removing the HDR Image Analyzer, two power cords, and either nine DIN 1.0/2.3 to full-size BNC adapter cables (3G model), or five HD-BNC adapter cables (12G model).
2. Mount the physical chassis as desired, using the provided sliding rails. Cooling airflow enters the chassis from the front, and exits from the rear and top panels. Do not obstruct these air vents.
3. Connect the two HDR Image Analyzer power cords to AC mains. For redundancy, use both power supplies and connect them to separate branch circuits so that the HDR Image Analyzer will continue to operate even if a circuit breaker opens on one branch.
4. Connect a computer monitor (user supplied) to one of the rear DisplayPort ports.
5. Connect a keyboard and mouse (user supplied) to available rear USB 3.0 connectors.
6. Connect the BNC adapter cables to the HDR Image Analyzer inputs and output connectors.

*NOTE: HDR Image Analyzer 12G BNC connections are bi-directional, configured for input and output via software control.*

7. Connect the HDR Image Analyzer inputs to your video source, and outputs to your mastering display monitor, if used.
8. Power up the chassis. The system will boot up to the Analyzer application.

## Hardware Installation

---

### Shipping Box Contents

---

An HDR Image Analyzer is shipped with two AC power cords and BNC adapter cables. Rackmount brackets are provided as part of the chassis.

As you unpack the shipping box, carefully examine the contents. Make sure you received everything and that nothing was damaged during shipment. If you find any damage, immediately notify the shipping service and supply them with a description of the damage. AJA will repair or replace damaged items.

If you find shipping damage, contact your AJA dealer or distributor for details on how to have your HDR Image Analyzer repaired or replaced.

*NOTE: Save packing materials and the shipping box. If your HDR Image Analyzer ever requires service or you move your system, use the packaging materials and box for safe shipment.*

### Rack Mounting the Chassis

---

Install the HDR Image Analyzer chassis into a standard 19-inch wide equipment rack, allowing space for cooling airflow. The chassis occupies only one vertical rack unit.

Two rack rail assemblies are included in the rack mounting kit. Each assembly consists of two sections: an inner fixed chassis rail that secures directly to the server chassis and an outer fixed rack rail that secures directly to the rack itself.

The rail assemblies are shipped with rack adapters installed for use with IT (square hole) style rack frames. For IT racks, simply slide the unit into place, as the rails will lock automatically. For use with a standard round hole rack frame, you will need to remove the adapters using a small Phillips head screwdriver.

## Network Configuration

---

The HDR Image Analyzer ships configured for DHCP operation. If your facility uses DHCP, simply connect one of the active Ethernet RJ-45 connectors to your network.

To manually configure your HDR Image Analyzer's IP addresses, on the Analyzer application press the Tab key on the keyboard when no dropdown menu is visible to open the Settings screen, and select NETWORK.

See "[NETWORK Tab](#)" on [page 40](#) for more information.

## Initial System Startup

---

On initial system startup, no login is required, but you will need to accept End User License Agreement (EULA) for Microsoft and NVidia. EULA is displayed on the first startup and after every update.

## Software Update

---

AJA's HDR Image Analyzer ships with Colorfront's Analyzer software preinstalled with the latest version.

Updates to the software are available at:

<https://www.aja.com/products/support/hdr-image-analyzer>

<https://www.aja.com/products/hdr-image-analyzer-12g#support>

**NOTE:** *If you update your HDR Image Analyzer from v1.0, you will need to enter the serial number of the system found on the rear of the HDR Image Analyzer chassis, below the 9-pin serial port.*

### Update with USB stick

---

To update HDR Image Analyzer software:

1. Download the .zip file and extract and copy the .ajas file to a USB stick.
2. Insert the USB stick into a rear USB port on the HDR Image Analyzer chassis.
3. Go to Help > Update Analyzer.
4. Select the downloaded .ajas file and click Select File.
5. The software will be copied to the HDR Image Analyzer, and when complete the message "Preparation Complete, please restart Analyzer" appears.
6. Click on the Analyzer > Application Restart menu item to complete the update, which can take a few minutes and might involve several system restarts.

*IMPORTANT: Do not power off the system during the software update, which can take up to nine minutes.*

7. When done, a "System shutdown is required to complete updates" message appears. Click on **OK** to shut down the system.
8. Power up the HDR Image Analyzer using the front panel power button. One or more end user license agreement screens will appear. Scroll down and click on the **Accept** button for each agreement.
9. The HDR Image Analyzer application will then launch, ready for operation.

## Update Using Web Browser

---

Since v1.1, HDR Image Analyzer supports software update using a Web Browser running on a separate network connected computer.

1. Download the .zip file and extract the .ajas file to a location on a network connected computer.
2. Open a web browser on that computer and enter the IP address of your HDR Image Analyzer. A webpage will be displayed.
3. Go to the Firmware menu and click on **Choose a file...**
4. Navigate to the saved location on the computer, select the .ajas file from the list on the HDR Image Analyzer's host computer, and click **Submit**.
5. The software will be installed, which can take a few minutes and might involve several system restarts.

*IMPORTANT: Do not power off the system during the software update.*

6. When done, a "System shutdown is required to complete updates" message appears. Go to the HDR Image Analyzer's computer and click **OK** to shut down the system.
7. Power up the HDR Image Analyzer using the front panel power button. One or more end user agreement screens will appear. Scroll down and click on the **Accept** button for each agreement.
8. The HDR Image Analyzer application will then launch, ready for operation.

## Licensing

---

The HDR Image Analyzer comes with an internal license already activated. No user involvement is required for licensing, other than accepting end user agreements.

# Chapter 4 – HDR Image Analyzer GUI

## Overview

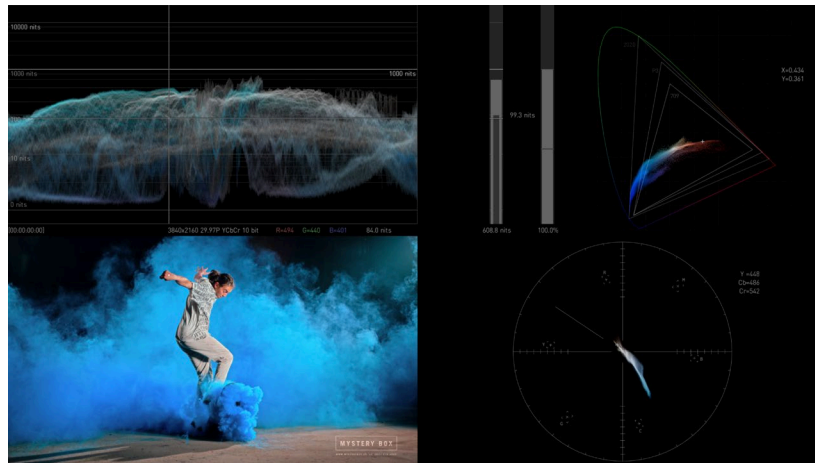
HDR Image Analyzer is a real time video analyzer for QC, Mastering, Grading and Broadcast. The simple, easy to use graphical user interface features unique options designed specifically for HDR work. When the HDR Image Analyzer hardware starts up, the GUI automatically launches.

HDR Image Analyzer interface provides a quadrant layout for viewing your tools and footage as you work. Quick key shortcuts provide pre-configured common layouts for how your tools and views are presented. For further customization, you can also choose a particular tool to be shown in any of the quadrants by either right-clicking on the quadrant itself and choosing your preferred tool, or by accessing quadrant choices from the Analyzer Mode menu

## Views

The Analyzer uses screen layouts with either a Quadrants view or Single view.

*Figure 4. Quadrants View Example*



Each screen quadrant can be configured to display the image being examined, or any of the available measurement tools.

*Figure 5. Quadrants View Example, Alternate Configuration*

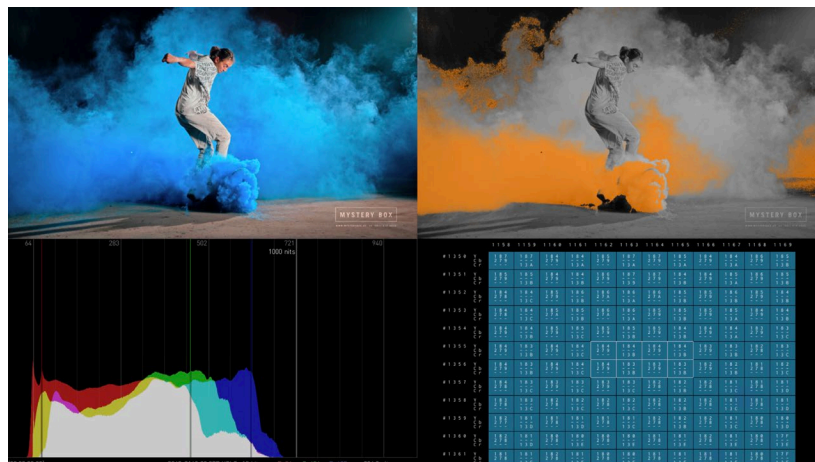
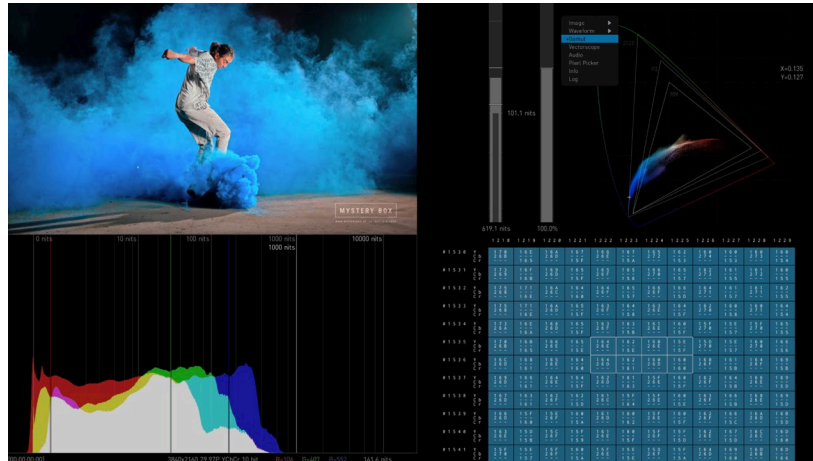
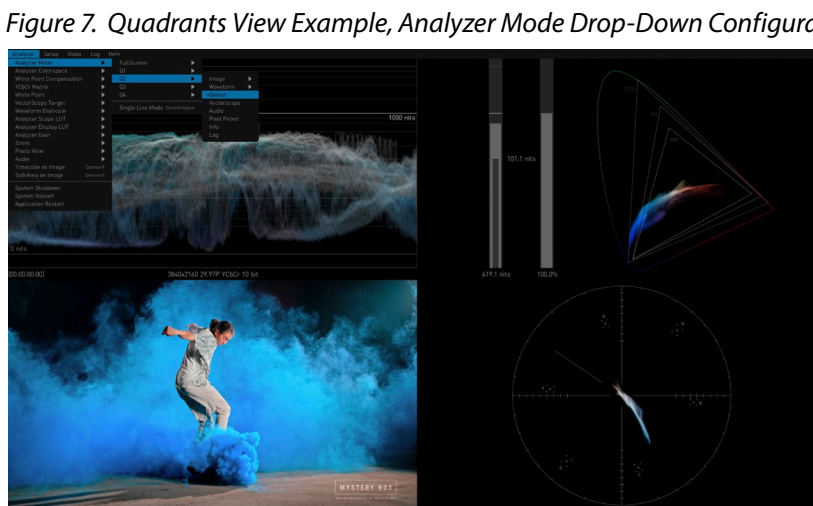




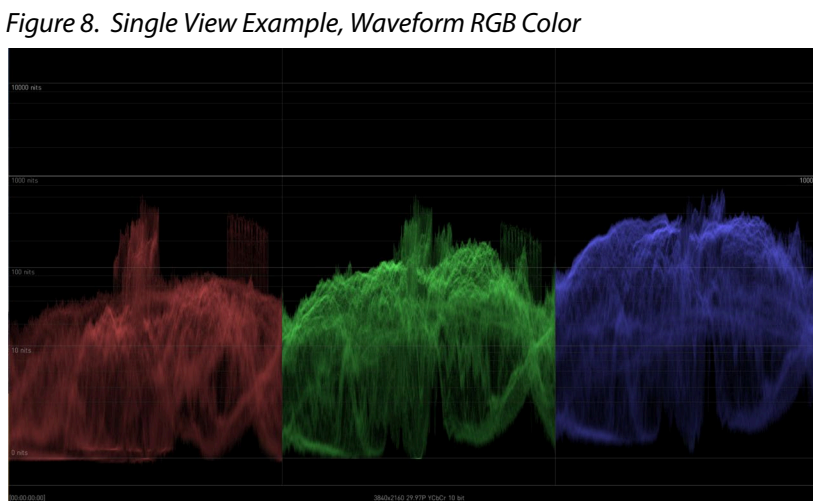
Figure 6. Quadrants View Example, Right-click Configuration



Quadrants can also be configured using the top menu bar's Analyzer Mode drop-down (*Figure 7*).



In Single View, the image being examined, or some of the selected measurement tools, can be displayed full screen.

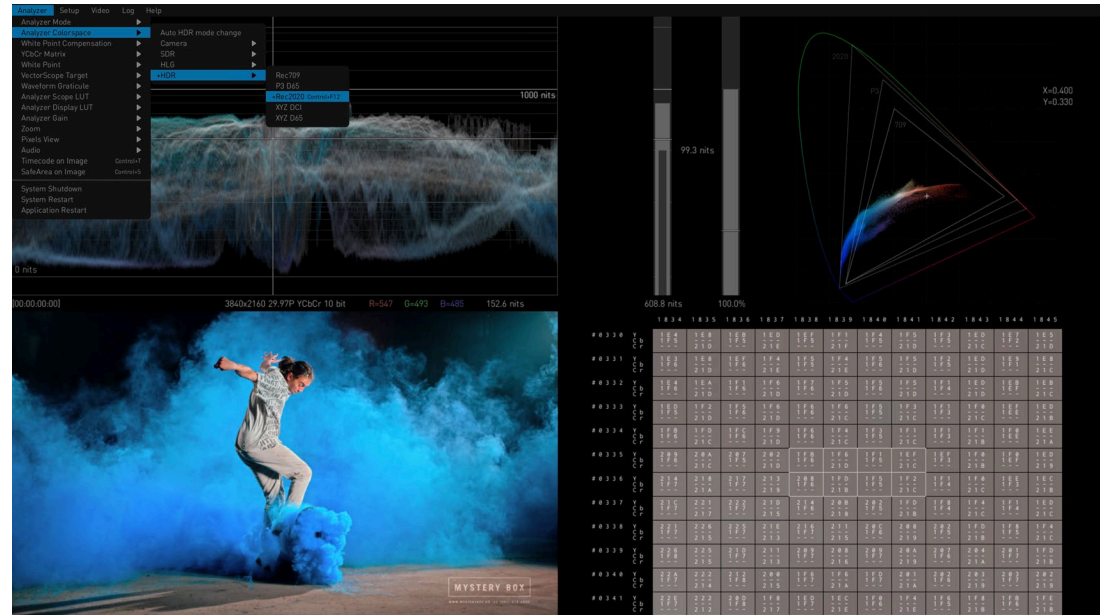


## Drop-Down Menu Navigation

A top menu bar appears when the cursor is moved to the top of the screen. These menus can be used to select layouts and configure settings. Clicking on a menu name opens that menu.

Pressing the ESC key also displays the drop-down menus.

Figure 9. Selecting Colorspace Using Drop-Down Menu



When a drop-down menu is displayed:

- The currently selected setting is indicated with a (+) in front of that menu item.
- The left and right arrow keys can be used to move to an adjacent menu, or open an additional parameter menu for the current menu selection.
- The up and down arrow keys moves the selection up or down that drop-down menu.
- Pressing the TAB key selects the next drop-down menu to the right. Shift+TAB moves the drop-down menu selection to the left.

**NOTE:** When the menu bar is not displayed, the TAB key opens the Settings screen. See ["Settings Screen" on page 37](#) for more information.

## Selecting Views with Keyboard

When a drop-down menu is not open, computer keyboard function keys can also be used to activate the layouts.

Table 1. Analyzer Mode Shortcuts

Function Key	Activated Layout
F1	Show Single View video Image. Press again to return to Quadrants view.
F2	Show Single View Waveform. Press again to return to Quadrants view.
F3	Show Single View Gamut. Press again to return to Quadrants view.
F4	Show Single View Vectorscope. Press again to return to Quadrants view.
F5	Cycles only Q1 through Image, Waveform, Gamut, Vectorscope, and Audio views.
F6	Cycles only Q2 through the five views above
F7	Cycles only Q3 through the five views above
F8	Cycles only Q4 through the five views above

The following shortcuts, using the CTRL key, also affect the current view.

Shortcut	Waveform/Histogram Display
CTRL+F5	Cycles Q1 tool variant. The Image display cycles through Brightness and Gamut tools, and the Waveform display cycles through Luminance and Color tools.
CTRL+F6	Cycles Q2 tool variant as above.
CTRL+F7	Cycles Q3 tool variant as above.
CTRL+F8	Cycles Q4 tool variant as above.

In addition, the following useful shortcuts are available:

Shortcut	Colorspace Setting
CTRL+F10	Sets Colorspace to SDR Rec 709
CTRL+F11	Sets Colorspace to HLG Rec 2020
CTRL+F12	Sets Colorspace to HDR Rec 2020
CTRL+space	Toggles Single Line Mode ON and Off

Keystrokes for each shortcut are listed in the drop-down menus. See ["Chapter 7 Menu Reference"](#) for a complete listing of all keyboard shortcuts.

## Analyzer Modes

The waveform, histogram, and vectorscope are a form of oscilloscope and are used to monitor video brightness, contrast, hue, and color saturation.

- The waveform displays the luminosity or brightness and contrast of the pixels in the video frame, with the top of the y-axis indicating a high luminosity level, and the bottom indicating a low luminosity level.

**NOTE:** Waveform views can be magnified 4x using the Waveform Zoom control. Use the mouse to move up and down the display.

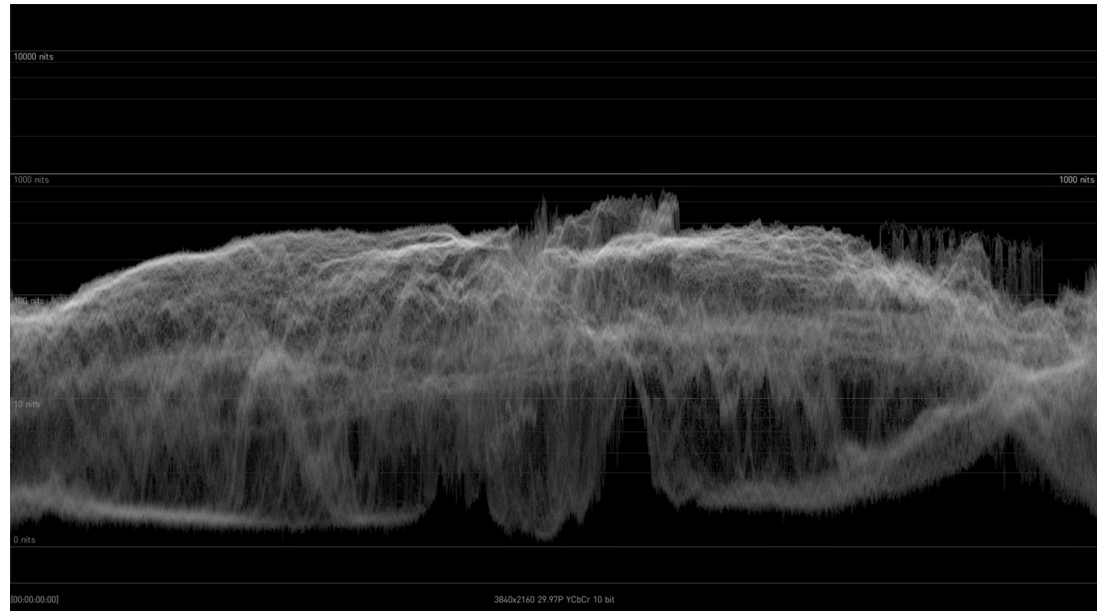
- The histogram shows the number of pixels in relation to a given list of luminance, or colors in a specific colorspace.
- The vectorscope displays values for hue and color saturation. The color saturation of each pixel in the video frame is shown, with the middle of the circle indicating a lower saturation level, and the edge of the circle indicating a higher saturation level. Hue is represented by placement in the 360 degree angle of the circle.

*NOTE: The Vectorscope view can be displayed at either a 75% or 100% size (the percentage changes the graticules on the Vectorscope, not the rasterized image), and can be magnified with the Vectorscope Zoom control.*

- The gamut screen shows a CIE xy gamut graph reporting the color values present in the image, with a graticule showing the limits for various standards (709, P3, 2020).

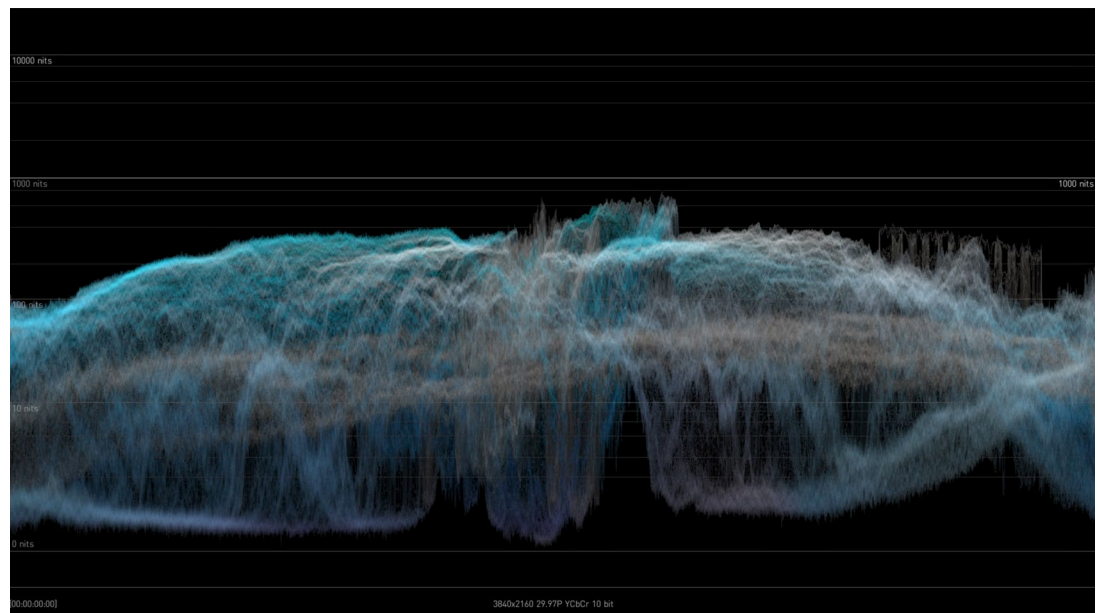
Several Analyzer view modes are available.

*Figure 10. Waveform Luminance Mode*



Waveform showing only luminance (Y) and no color information. Each pixel on the graph shows the frequency of the corresponding luminance value in the given column. Higher luminance value means lighter image content, lighter pixel means higher frequency of that luminance value.

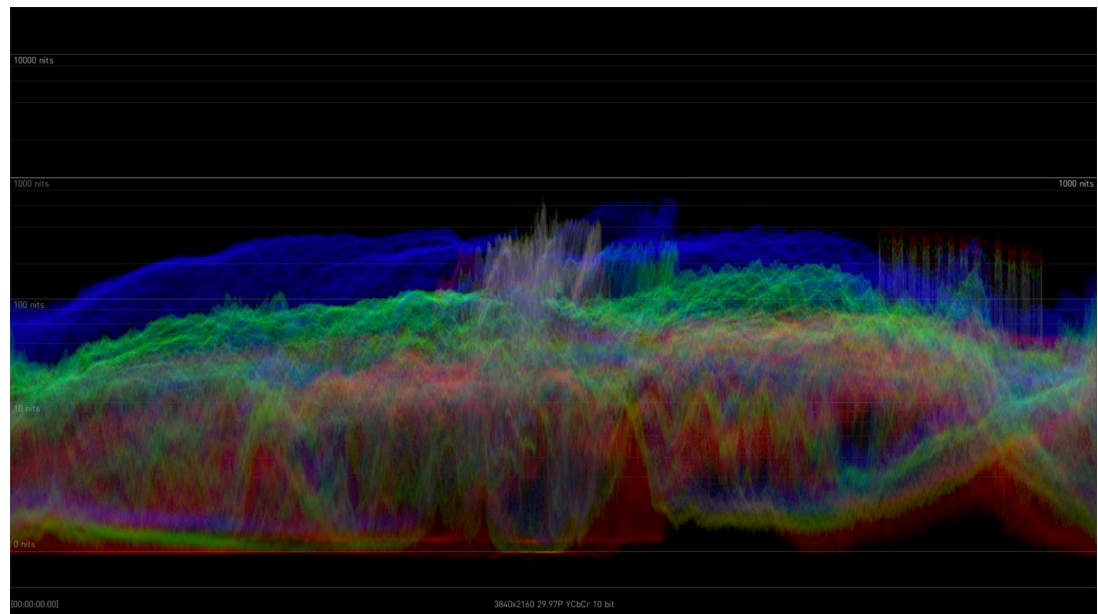
*Figure 11. Waveform Lumi Color Mode*





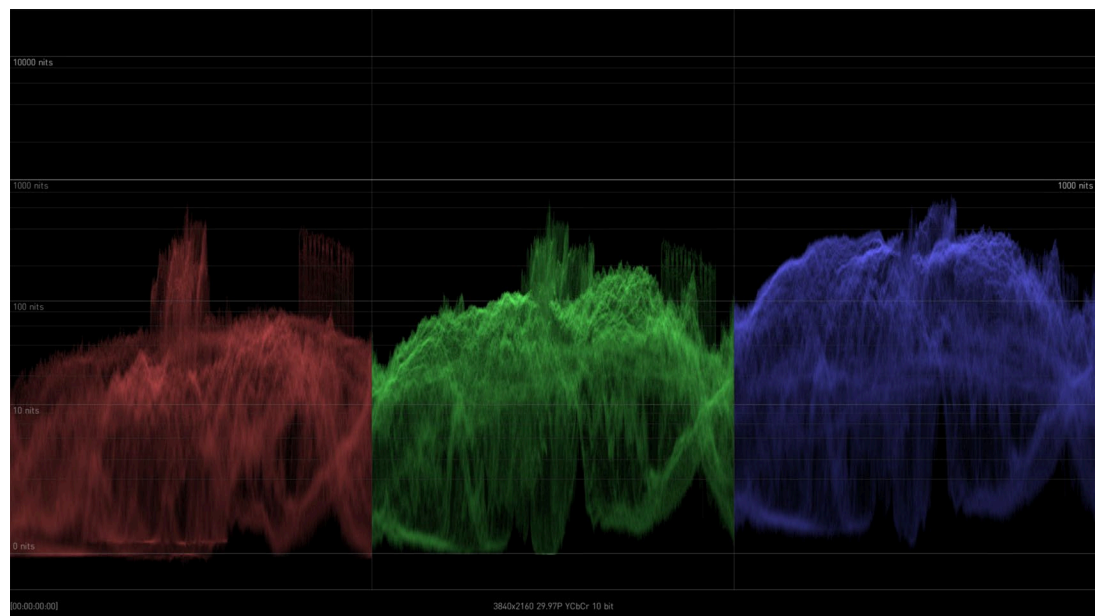
Waveform showing both luminance and color information. Here, in addition to the Waveform Luminance mode, the graph is colored according to color information. The hue and saturation of a pixel shows the sum of the dominant colors having the corresponding luminance value.

*Figure 12. Waveform Color Mode*



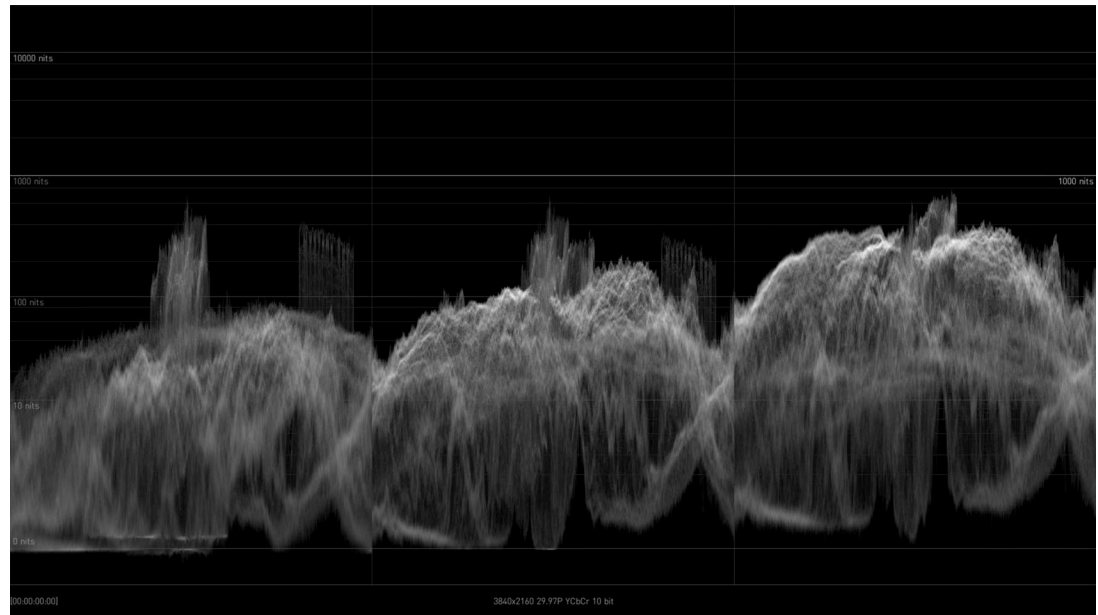
Waveform showing the RGB channels superposed in one graph.

*Figure 13. Waveform RGB Color Mode*



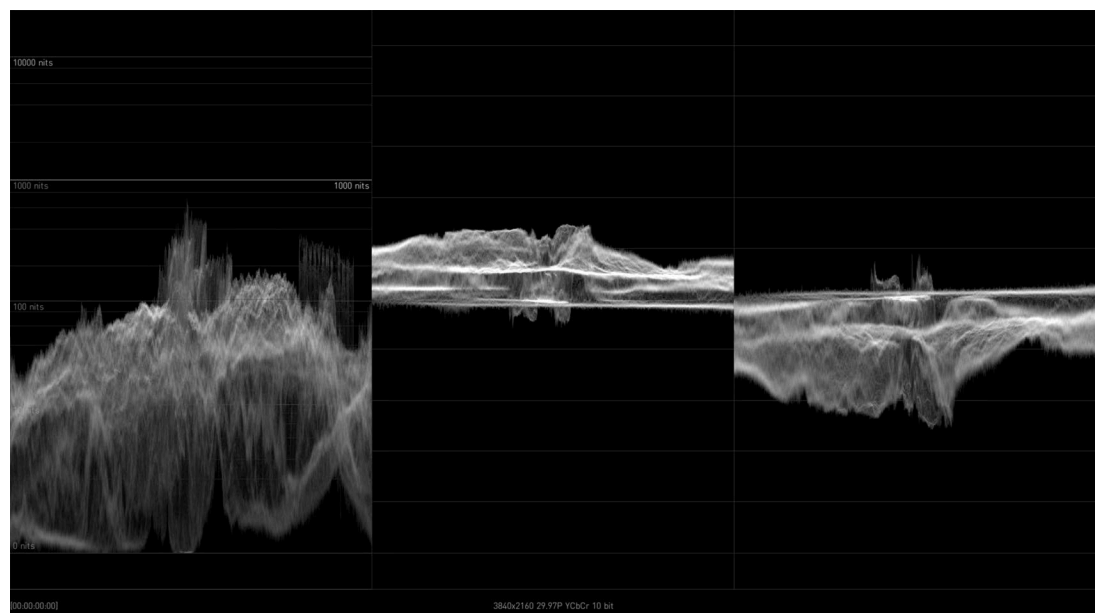
Waveform showing the RGB channels in a split view, where each graph is shown in its respective color.

Figure 14. Waveform RGB Mode



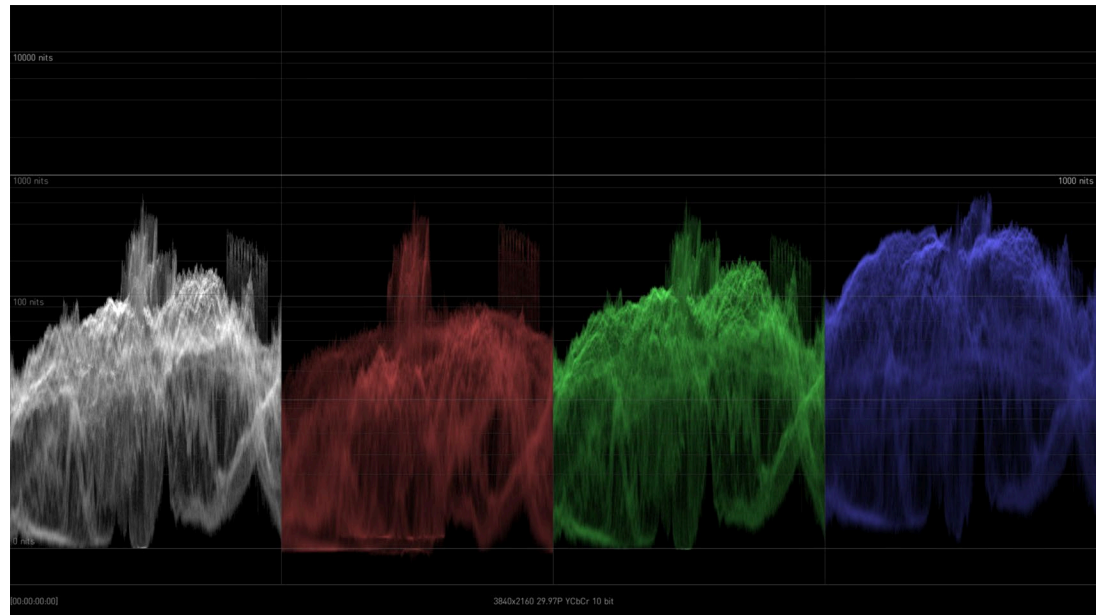
Waveform showing the RGB channels in a split view, where each graph is shown in monochrome.

Figure 15. Waveform YCbCr Mode



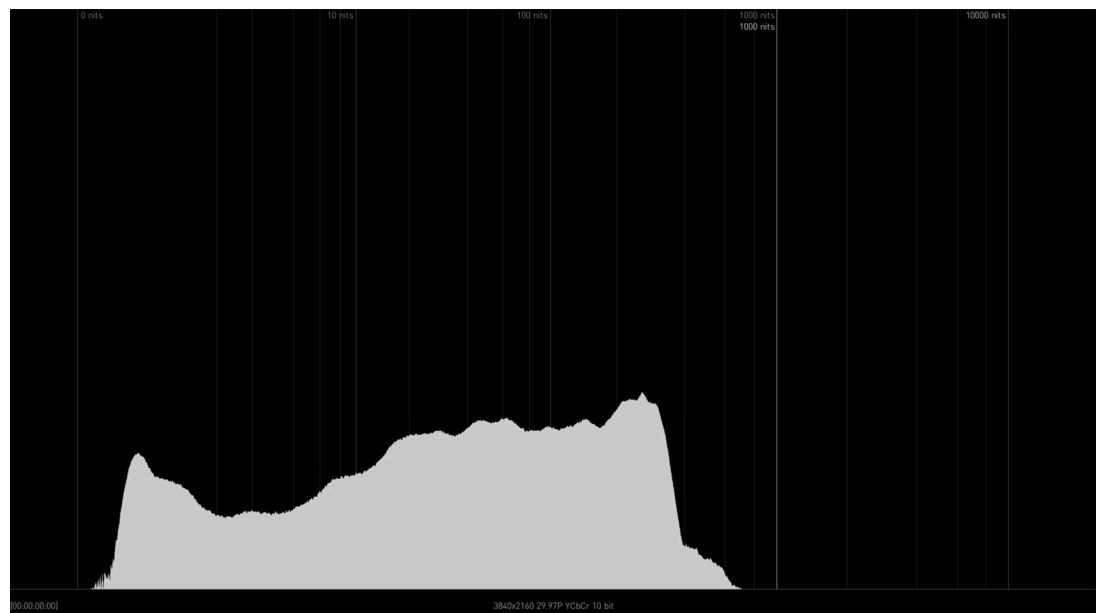
Waveform showing luma (Y), blue minus luma (Cb), and red minus luma (Cr) in a split view.

Figure 16. Waveform YRGB Mode



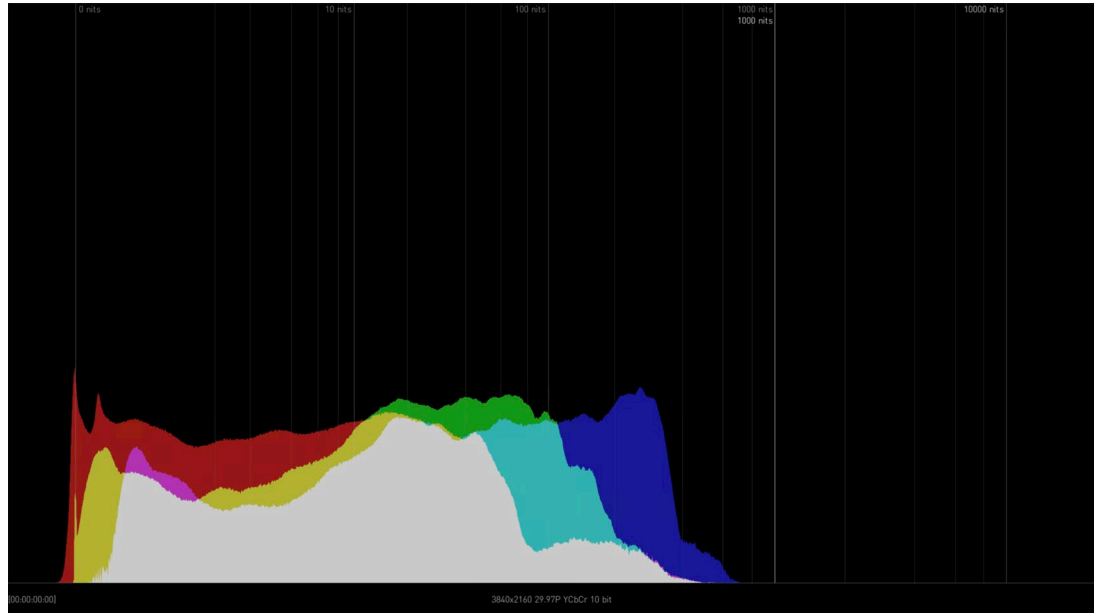
Waveform showing luminance and RGB channels in a split view, where each color channel graph is shown in its respective color.

Figure 17. Histogram Luminance Mode



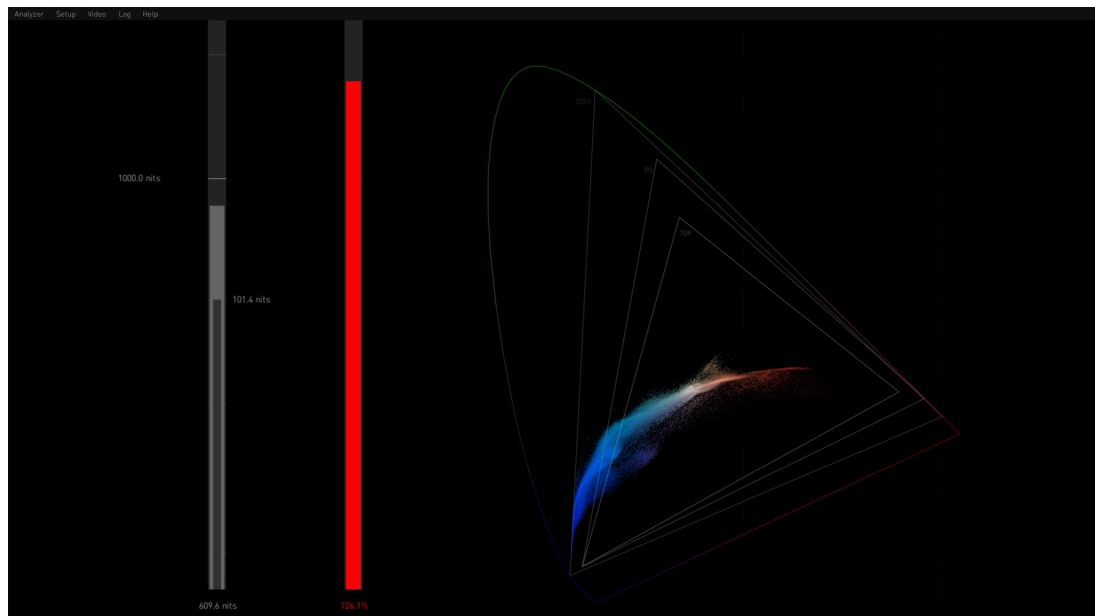
Histogram Luminance is showing the frequency of luminance values throughout the current image content. Left-hand part is for darker, right-hand part is for lighter image content.

Figure 18. Histogram Color YCbCr Mode



Histogram Color showing the frequency of RGB channel values throughout the current image content, superposed. For each channel, the left-hand part represents image content for "0" or Black, while right-hand part represents image content for "1" and White. The 0-1 range is a scale, also represented as code values: (0 = 0,0,0 and 1 = 1023,1023,1023) in 10 bit code value for R, G & B.

Figure 19. Gamut Mode (CIE xy Graph) with Gamut Error



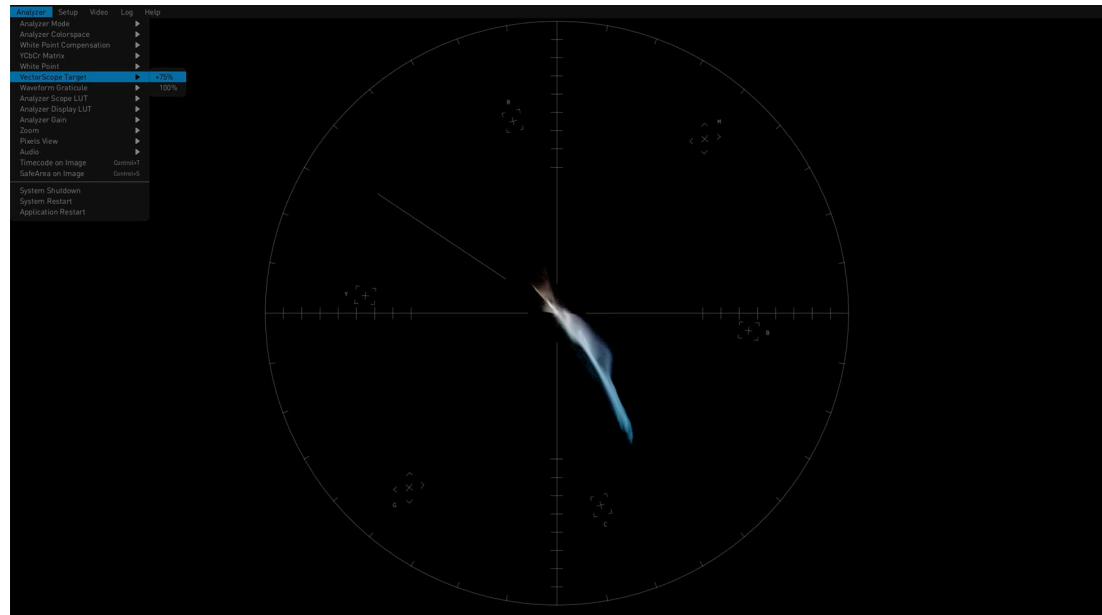
This mode displays a CIE xy Gamut, showing various output referred color gamut standard limits, and also has Brightness and Gamut bars.

#### Brightness and Gamut Bars

This view also contains two bars: the brightness bar on the left indicates the brightest pixel detected, the gamut bar on the right shows if the colors are within the legal color gamut. See ["CIE xy Gamut View" on page 31](#) for more information.

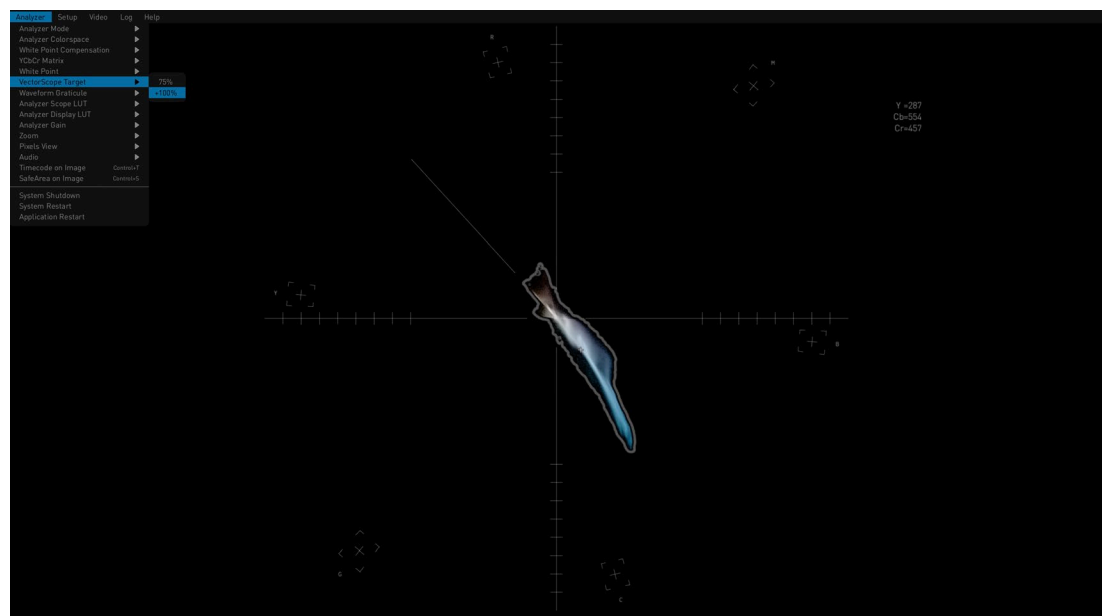


Figure 20. Vectorscope with markers indicating 75% values



Vectorscope is showing the hue and saturation of all pixels throughout the current image content. The middle of the circle indicates a lower level of saturation, while the edge of the circle indicates a higher level of saturation. The brightness of the graph shows the frequency of the respective color in the image content.

Figure 21. Vectorscope with markers indicating 100% values, Vectorscope Aid



## Skin Tone Line

A skin tone line is also available on the Vectorscope graticule, adjustable using the Skin Tone X and Y controls in the Settings menu.

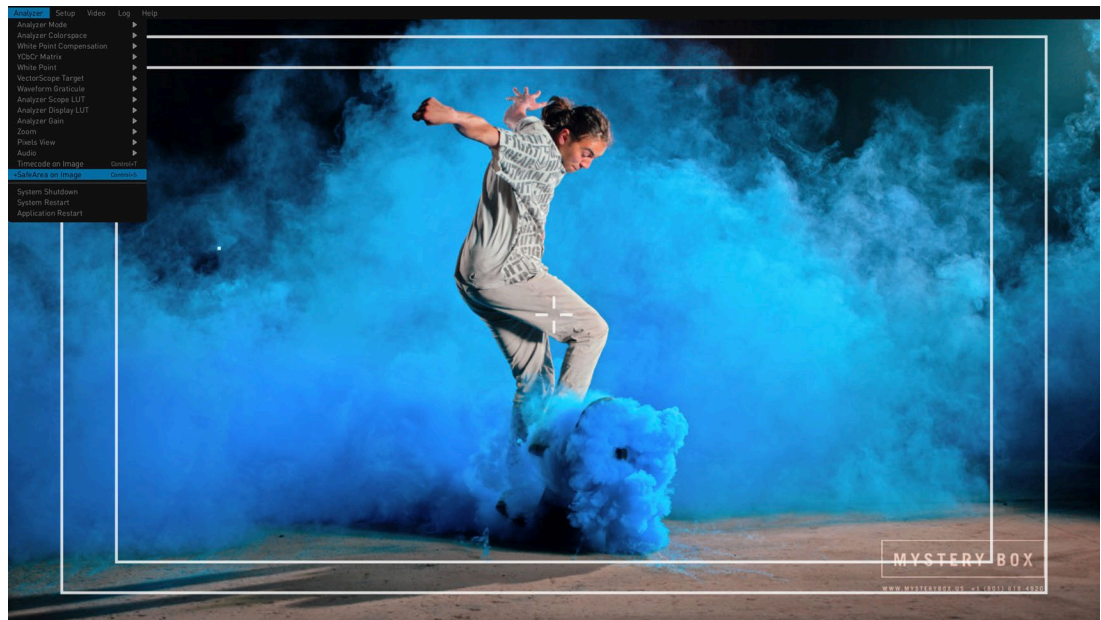
## Vectorscope Aid

A Vectorscope Aid feature is available in the Settings menu, which draws a grey bounding area around the chroma on the Vectorscope, which can be useful when trying to examine individual pixels.

## Framing Guides

HDR Image Analyzer supports two framing guides, Safe Title and Safe Action. Enabling "Safe Area on Image" displays the guides configured in the SAFEAREA sub-page of the Settings screen. You can display either the Safe Title, Safe Action, or both boundaries. The CTRL+s hotkey combination enables and disables the framing guide display.

Figure 22. Framing Guides



## Timecode on Image

The timecode is captured from several areas including the SDI and may be displayed on the image by selecting the Window > Timecode on Image menu option.

Figure 23. Timecode on Display Image (Lower Right Corner)



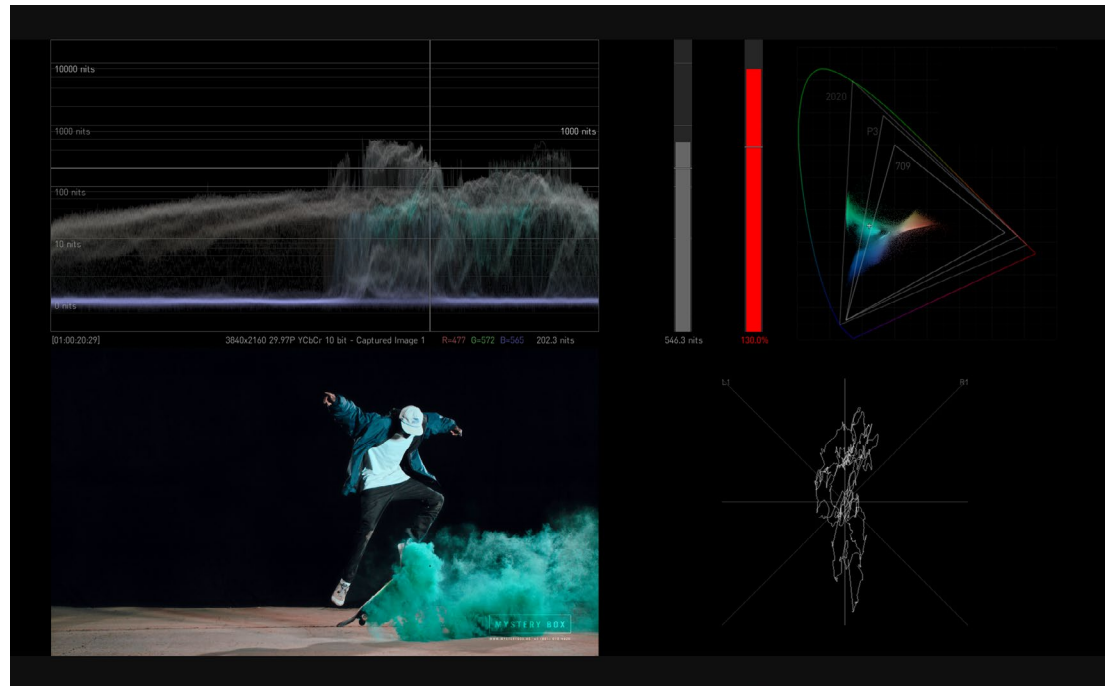
## Audio Monitoring

Any quadrant of the HDR Image Analyzer GUI can display one of the audio monitoring screens. In the following examples the various tools are shown in the lower right quadrant (Q4).

### Audio Phase Meter

Analyzer supports an audio phase meter which can be configured to display either two channel (stereo) or eight channel (surround) audio. When configured to display two channels, channels 1-2, 3-4, 5-6, or 7-8 may be displayed. When configured to display 8 channels, channels 1-8, or 9-16 may be displayed.

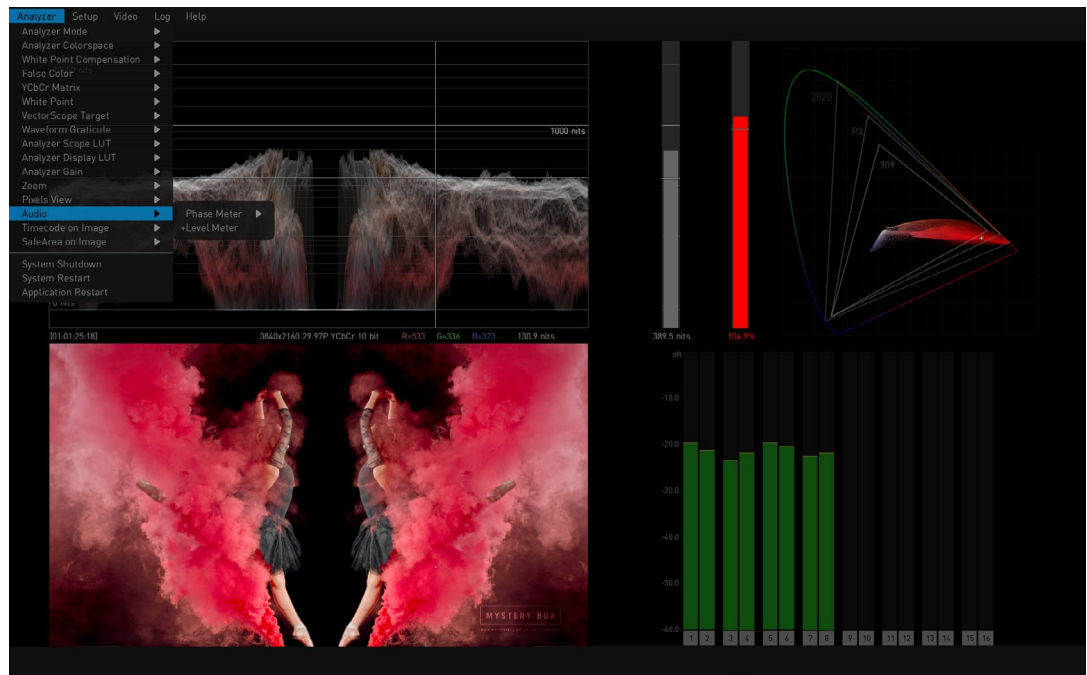
Figure 24. Audio Phase Meter

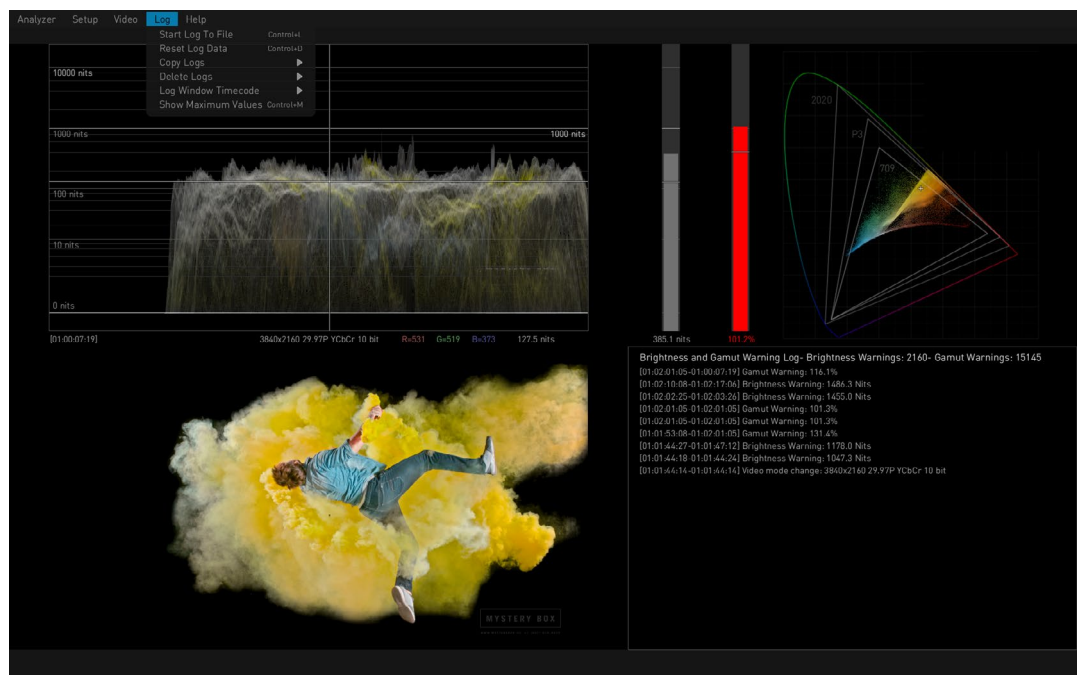
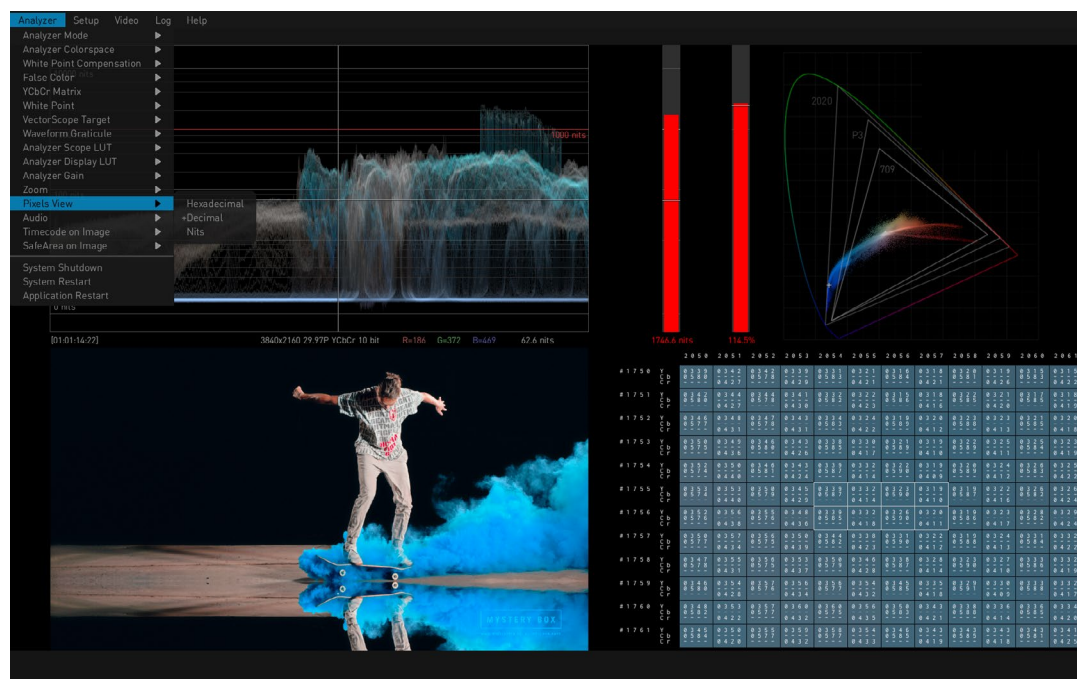


## Audio Level Meter

Analyzer supports an audio level meter with up to 16 channels which can be used to monitor audio levels and also display peak dB levels.

Figure 25. Audio Level Meter



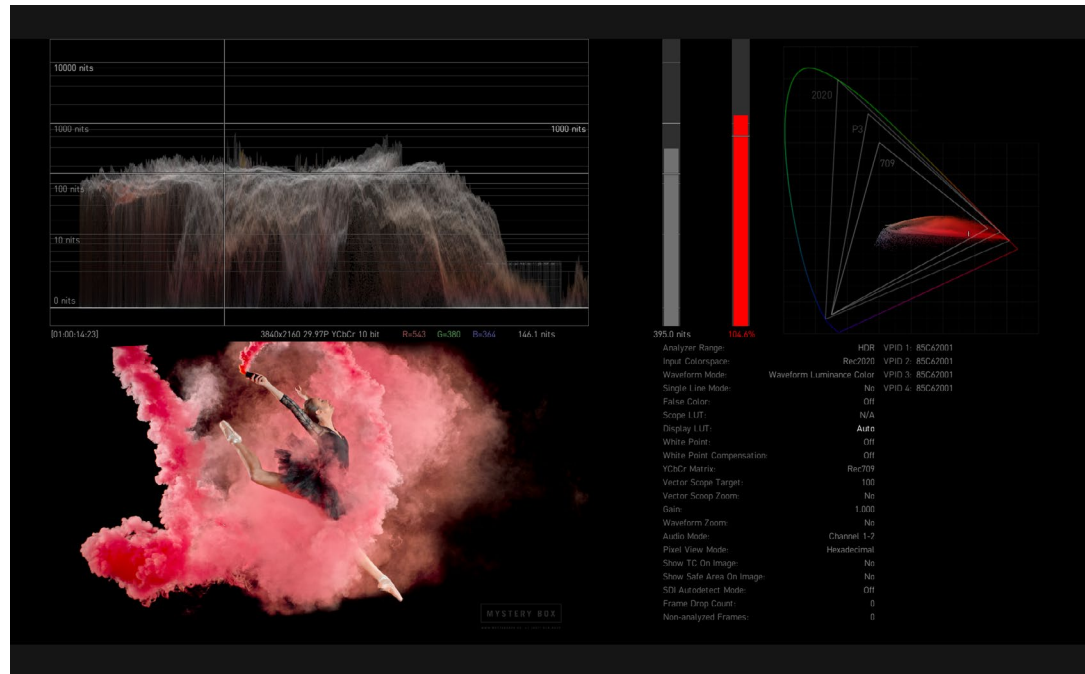




## Info Page

When Info is selected for a quadrant, useful information about the current HDR Image Analyzer settings is displayed.

Figure 28. Info Page Quadrant View



## Other Features

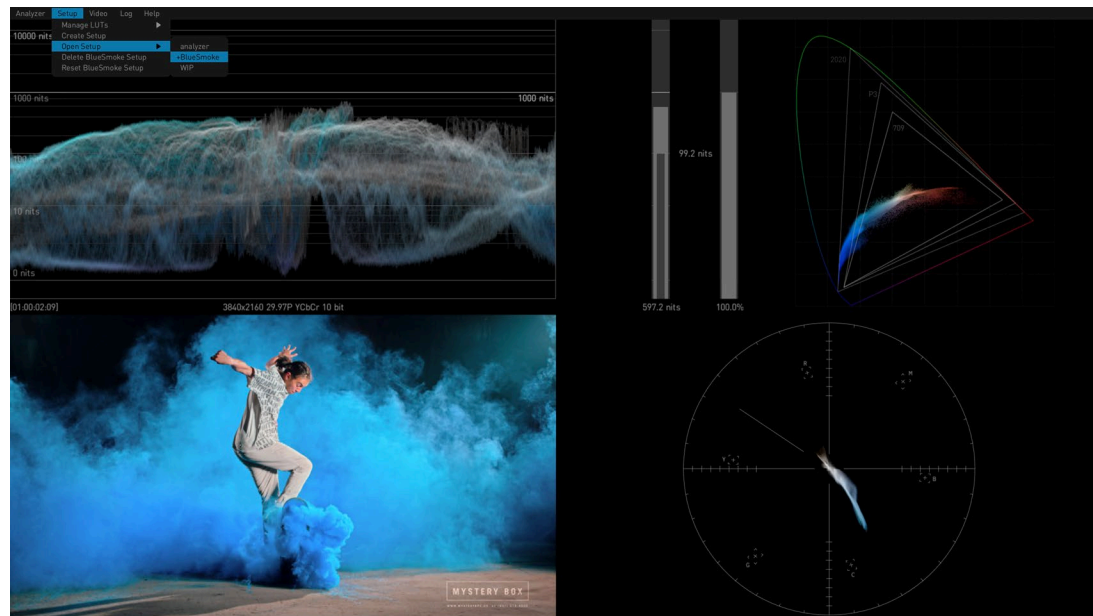
Other configuration options are available in the various HDR Image Analyzer menus. See "[Chapter 7 Menu Reference](#)" for additional information.

# Chapter 5 – Using HDR Image Analyzer

## HDR Image Analyzer Setups

The Setup menu of the top menu bar is used to create, select, and save Setups of views and parameter settings.

*Figure 29. Setup Menu*



An opened Setup is updated with any changes made to the HDR Image Analyzer's current settings. This ensures whenever a Setup is loaded, the last configuration that was used for that Setup will be restored.

If you want to save a "snapshot" of the current settings, after opening or creating a Setup and creating the configuration you wish to save, simply create or load a new Setup. Any subsequent parameter changes will be made to the new Setup, and the "snapshot" of settings for that earlier Setup will be recalled later when that earlier Setup is opened.

### Create Setup

Opens a window to name and create a setup of the current settings.

### Open Setup

Displays a list of the current setups for selection.

### Delete Setup

When a Setup has been opened, you can delete it with this choice. The default "analyzer" setup then gets loaded.

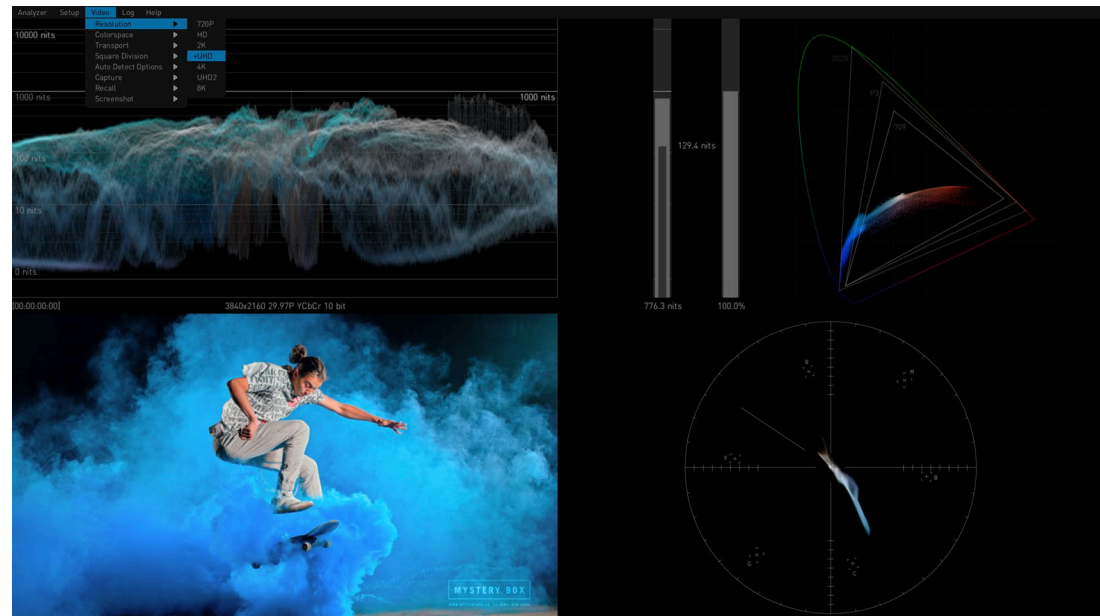
## Reset Setup

Resets the current Setup to factory default values.

## Video Menu

The Video drop-down menu of the top menu bar is used to define the characteristics of the video signal being analyzed, and can be used to capture and recall still video images for detailed analysis.

Figure 30. Video Menu



**NOTE:** If Auto Detect is On, the HDR Image Analyzer will automatically select (if possible) the incoming video's Resolution, Colorspace, Transport, and Square Division settings.

## Resolution

A drop-down menu permits selecting a resolution to manually match the incoming video being analyzed. Select from:

- 720p
- HD
- 2K
- UHD
- 4K
- UHD2 (12G model only)
- 8K (12G model only)

## Colorspace

A drop-down menu permits selecting from YCbCr 10 bit, RGB 10 bit, or RGB 12 bit colorspaces to manually match the incoming video being analyzed. Select from:

- YCbCr 10 bit
- RGB 10 bit
- RGB 12 bit



## Transport

---

A drop-down menu permits selecting the SDI transport to manually match the incoming video being analyzed. Select from:

- Single Link
- Dual Link
- Quad Link

## Square Division

---

A drop-down menu permits selecting the pixel mapping of incoming video. Select from:

- SQD - Square Division
- 2SI - Two Sample Interleave

## 2SI LFR and HFR Input

---

For LFR (Low Frame Rate) 2SI video the Analyzer only uses SDI input 1 and 2 (four wire LFR 2SI is not supported at this time).

For HFR (High Frame Rate) 2SI video all 4 SDI inputs are used.

## Auto Detect Options

---

The Auto Detect Options setting is used to make the HDR Image Analyzer automatically select the number of incoming video signals to be used depending on the detected video, or to force the use of only the first BNC input connector, or to force the use of all four input connectors. The auto detection is based on the VPID video payload identifier (SMPTE 352M).

**Auto Detect** - HDR Image Analyzer automatically detects incoming video and uses either one link, or four links as appropriate.

**Forced 1x SDI Connection Mode** - Forces use of only BNC input connector one.

**Forced 4x SDI Connection Mode** - Forces use of all four input BNC connectors.

**Allow Loop Through (12G model only)** - Activates loop through BNC outputs, if output connectors are available.

## Capture

---

Captures the current video frame. Up to four frames can be captured.

*NOTE: Captured images are volatile, and will be lost when the HDR Image Analyzer is turned off.*

## Recall

---

Recalls the selected captured video frame for display and detailed analysis.

## Screenshot

---

The Screenshot menu lets you capture the current Analyzer UI screen displayed on the connected computer. Screenshots are saved as .png files to the local host computer, and can then be copied into a different folder (for example an attached USB flash drive).

## Save Screenshot

---

Captures the current Analyzer UI screen. You can also use the CTRL+e hotkey.

## Copy Screenshots

---

**Copy All Screenshots** - Opens a file browser window allowing you to select the drive and folder into which all the currently captured screenshots will be copied.

**Copy Today's Screenshots** - Copies only the screenshots captured today.

**Copy All Except Today's Screenshots** - Copies all captured screenshots except those captured today.

## Delete Screenshots

---

**Delete All Screenshots** - Deletes all currently captured screenshots. Does not affect screenshot files that have been copied into another folder.

**Delete Today's Screenshots** - Deletes only the screenshots captured today.

**Delete All Except Today's Screenshots** - Deletes all captured screenshots except those captured today.

# Analyzer Colorspace and Range

---

You can find the analyzer range configuration options in Analyzer > Analyzer Colorspace menu.

The Analyzer supports Camera Log, and SDR and HDR (HLG and PQ) colorspace modes. Select the appropriate option from the Analyzer > Analyzer Colorspace menu that matches the current image.

## Auto HDR Mode Change

---

This parameter can be used to make the HDR Image Analyzer automatically configure the Transfer Characteristic and Colorspace settings, based on the VPID of the incoming SDI signal.

## Camera Log Analysis

---

Several original camera log curves are supported for processing media in the original capture colorspace. Supported formats are the following:

- ARRI LogC WideGamut
- CanonLog2
- CanonLog3
- Panasonic VLog/VGamut
- Red WideGamut/Log3G10
- Sony SLog3/BT2020
- Sony SLog3/SGamut3
- Sony SLog3/SGamut3Cine
- ACEScct

For scene referred input (Camera Log colorspace modes) CIE xy Gamut Graph values are clipped to the primaries of the colorspace.

In these modes, the waveform graticules are displayed in camera stops. To set up the base level and the warning level, adjust the following settings in the QC section of the Settings page (open with Tab):

**CameraBaseGrey** - Base grey level in nits; the 0 exposure line will be drawn at this level

**CameraWhiteStopsOverGrey** - Brightness warning level; it stops over base level

## SDR Analysis

---

For working with SDR gamma encoded broadcast or cinema signal, set the Analyzer Range to SDR. Possible color primary options are the following:

- Rec709
- P3 DCI
- P3 D65
- Rec2020
- XYZ DCI

## HLG Analysis

---

HLG mode supports the variable Hybrid Log-Gamma color encoding. In this mode, code values range from 0 to 1 and pixels do not have a specific nit level interpretation. Possible color primary options are the following:

- Rec709
- Rec2020 (with gamut warning for colors outside of P3)

*NOTE: The settings QC tab has a Gamut Warning parameter that allows setting when the HDR Image Analyzer will trigger out-of-gamut warnings. You can choose Rec 709, P3, Rec2020 or none.*

## HDR Analysis

---

HDR mode supports High Dynamic Range analysis. Peak brightness values above the maximum allowed nit level are indicated in red on all graphs.

Possible color primary options are the following:

- Rec709
- P3 D65

*NOTE: By default, the peak brightness threshold is set to 1000 nits according to the HDR10 standard. When working with PQ masters of higher peak brightness, the corresponding maximum brightness needs to be adjusted on the QC section of the Settings page (open with Tab).*

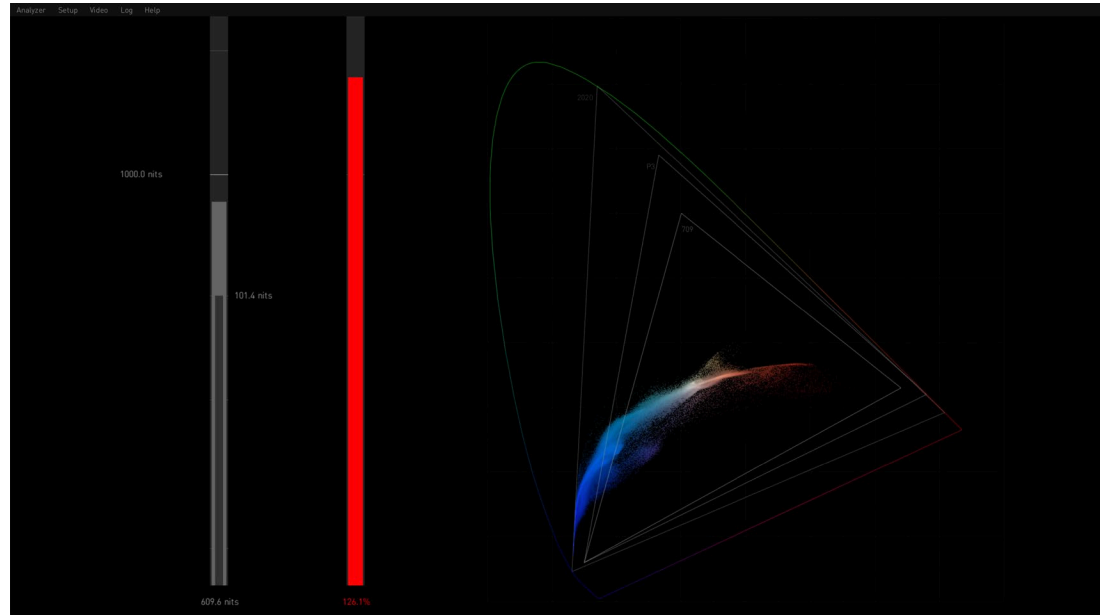
- Rec2020 (with gamut warning for colors outside of P3)
- XYZ DCI
- XYZ D65

## CIE xy Gamut View

---

The CIE xy Gamut View can be used to check the encoded colors on a standard CIE xy graph, and to see if they are within the valid color range in case a specific gamut constrain is to be enforced. This is relevant when working in the Rec2020 colorspace, so the operator can identify that the colors are outside of the P3 gamut. This is a requirement for several currently popular delivery formats.

Figure 31. CIE xy Graph with Brightness and Gamut Bars



This view also contains two bars. Illegal colors are indicated when a bar is colored red.

The bar on the left is the brightness bar that indicates the brightest pixel detected on the actual frame. When properly configured, an inner vertical bar on the left with a nits value shows the Frame Average Light Level (FALL) of the current frame, which allows the operator to inspect the average brightness of the image.

The bar on the right is the gamut bar that shows if the colors of the actual frame are within the legal color gamut (P3 in case of Rec2020 input colorspace).

The maximum values are calculated using the Tolerance parameters available in the Settings Screen. The P3 colorspace is the limit. HDR Image Analyzer uses thresholds when detecting these extremes, so using the default settings a few pixels are allowed to exceed the legal limits without triggering a warning.

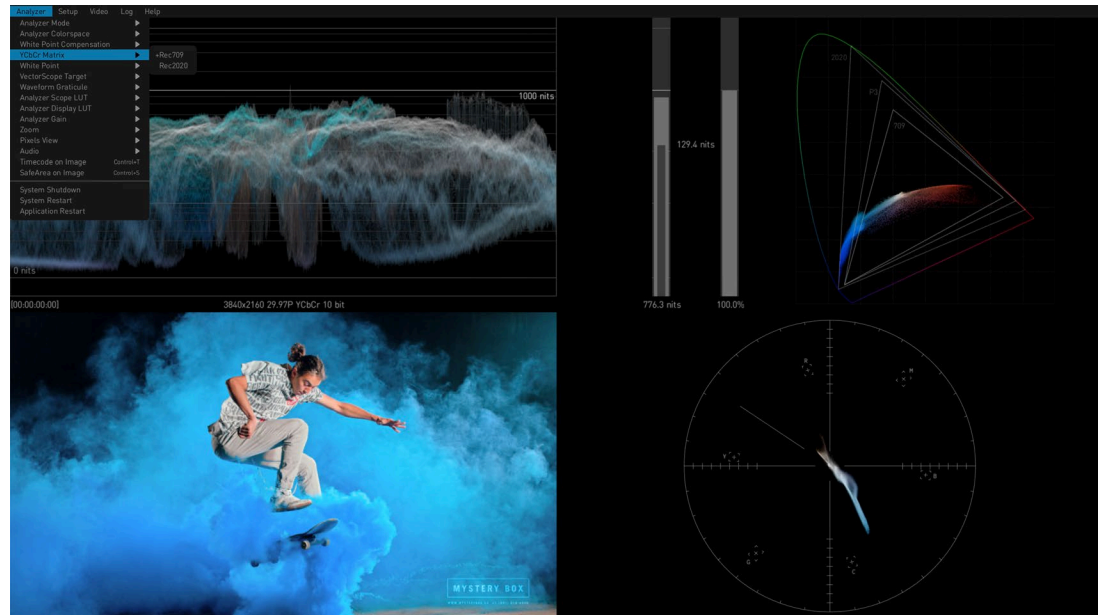
*NOTE: Cumulative maximum values can be displayed on the Brightness and Gamut bars using the Log > Show Maximum Values parameter.*

## YCbCr Matrix

For the purpose of showing YCbCr components in various graphs (such as the vectorscope or the waveform YCbCr), the result image is converted to the YUV space. Select from the following formats for the specific matrix transformation:

- Rec2020
- Rec709

Figure 32. Signal Analysis with CIE xy Gamut Graph and Vectorscope



NOTE: The above settings will be reflected in the CIE xy graph and the gamut meter.

## White Point Compensation

White point is a marker on the CIE graph. White point compensation D65, however, is an option to change processing. Thus, if you are in XYZ Gamma2.6 colorspace (Digital Cinema), you can change the Vectorscope and Waveform processing so that the balanced white would be D65 instead of DCI. By default, DCI white would be in the center of the Vectorscope, and DCI white would have the same level in the three channels of the waveform. If you turn on White Point Compensation to D65, then D65 white would be in the center of the Vectorscope, and D65 white would have the same level in the three channels.

- The **White Point Compensation** parameter in the Analyzer menu turns compensation On and Off, which will change the analysis of the incoming video.
- The **White Point** parameter simply displays a box for either D65 or DCI on the CIE graph, and does NOT alter the analysis of the incoming video.

## False Color

You can check for illegal or near-illegal brightness and gamut levels by enabling the False Color mode. The available False Color display modes are the following:

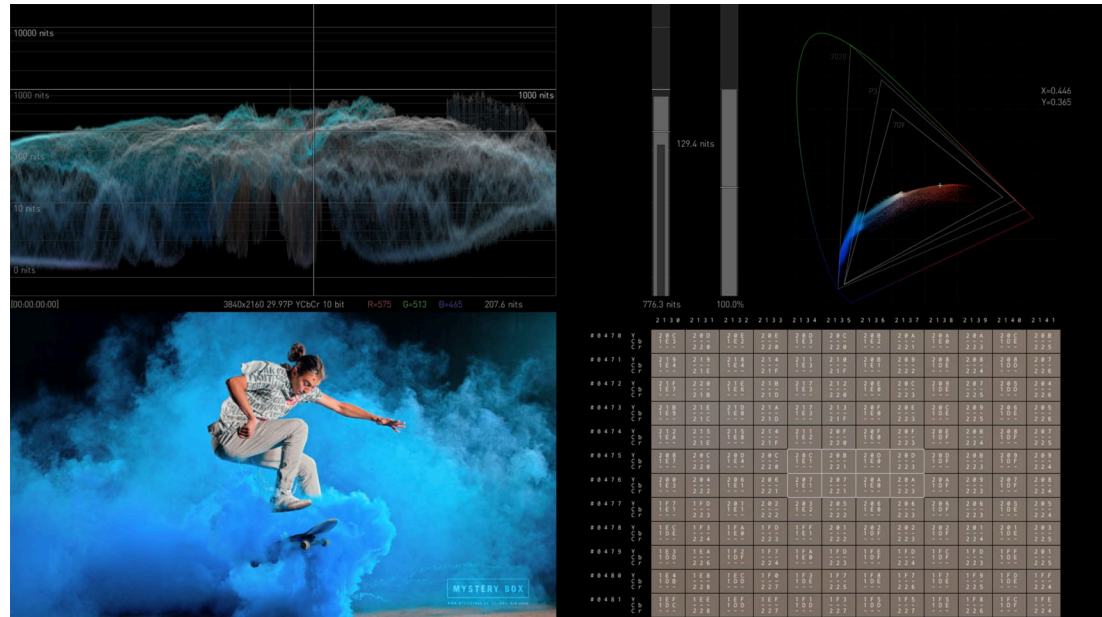
- Brightness
- Brightness Warning
- Gamut
- Gamut Warning

In the Warning modes, pixels that are too bright or out-of-gamut are colored red. Values at 90% of threshold are orange. The rest of the pixels are displayed in grayscale.

# Pixel Picker

The Pixel Picker is always active. With a left click of the mouse you can pick any pixel on the image (Full Screen or Lower Left Quadrant.) The Pixel Picker view provides an extra precision view with per-pixel granularity.

Figure 33. Pixel Picker



## Pixel Picker Modes

From the menu the operator can choose how to inspect the pixel color values. The options are:

**Hexadecimal mode** - Displays the hex code values of the pixels.

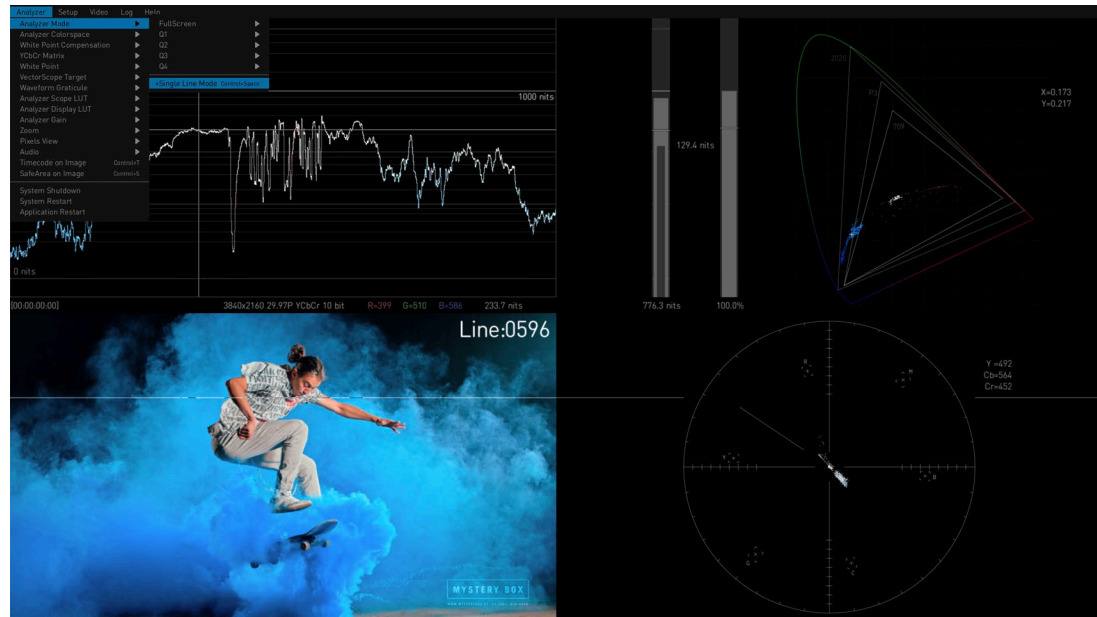
**Decimal mode** - Displays the decimal code values of the pixels.

**Nit value mode** - Displays the pixel brightness in nit level.

## Single Line Mode

Single Line Mode limits the analysis to a single horizontal line of video. This mode can be used by a QC operator to verify blanking.

Figure 34. Single Line Mode



The line being analyzed is indicated with a contrastingly colored line, and the number of the line is shown on the upper right.

Single Line Mode is turned on and off with the Analyzer Mode menu, or with the CTRL+space hotkeys. Additionally the hotkey CTRL + Up/Down Arrow moves the single line mode up and down one line at the time.

## LUTs

### Overview

Lookup Tables (LUTs) allow the mapping of colors between colorspace.

The HDR Image Analyzer allows external Lookup Tables (LUTs) to be used for two different purposes:

- A Display LUT is only applied to the image being shown and does not affect the actual analysis of the pixel values. This can allow an operator to look at a correct image on a display device that does not match the current video signal type.
- A Scope LUT is applied to the video signal being processed, so all scopes, waveforms etc. will be based on the remapped image.

No external LUTs are provided with the HDR Image Analyzer. Users can create and load custom LUTs, if desired, provided they are formatted as either a \*.cube or \*.3dmesh LUT file.

LUT files are loaded into and deleted using the Setup > Manage LUTs menu (Figure 35 on page 36), but are not active until selected for use as either an Analyzer Scope LUT or an Analyzer Display LUT (Figure 36 on page 36), using the Analyzer menu selections.



Figure 35. Manage LUTs Menu

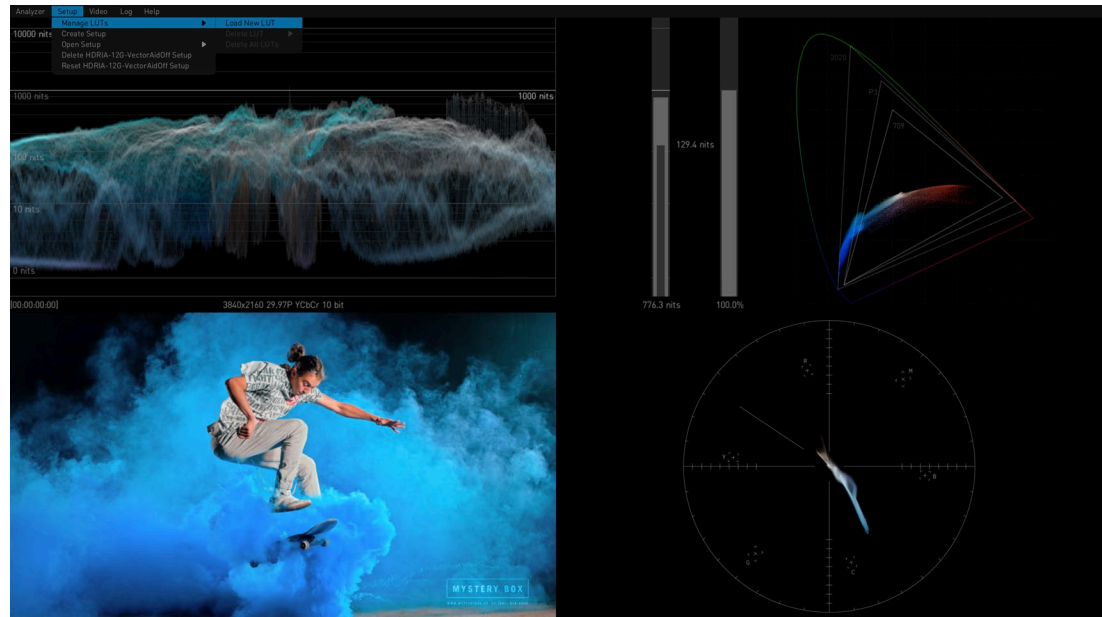
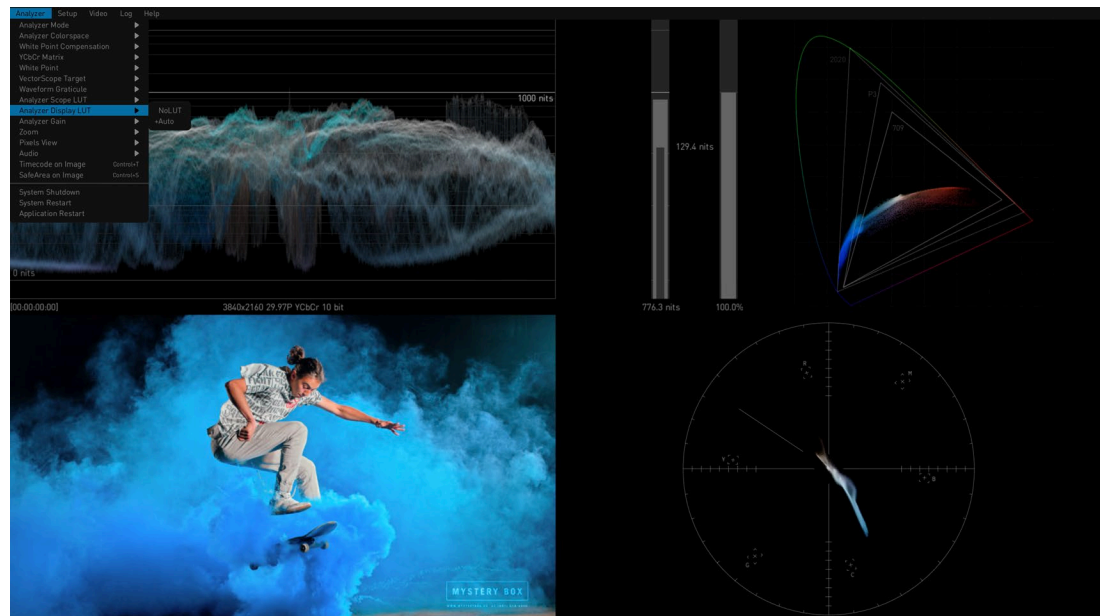


Figure 36. Analyzer Display LUT Menu



### Analyzer Scope LUT

Generally the **No LUT** Analyzer Scope LUT setting should be used to maintain the correct color analysis.

### Display Scope LUT

Generally the **Auto** Analyzer Display setting should be used, which enables HDR Image Analyzer to use its internal, calibrated LUTs for proper display.

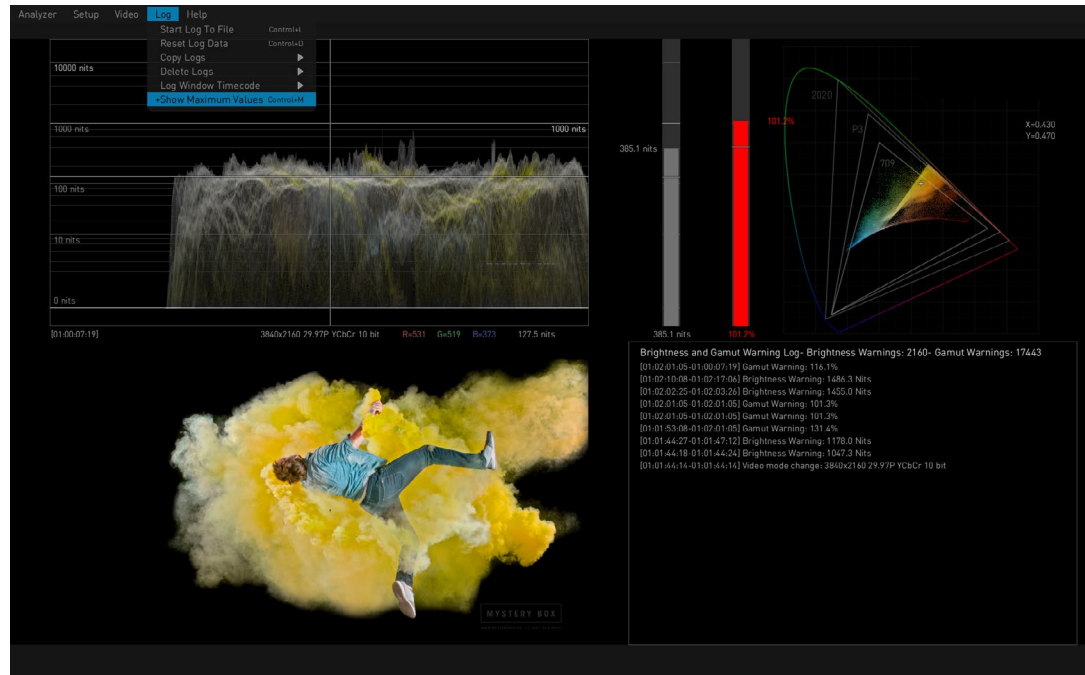


# Logging

Analyzer detects the events below and logs them with time stamps in a log file and on screen:

- Gamut violations of the current colorspace.
- For HDR, P3 Gamut violation if HDR Colorspace is set to Rec2020.
- For HDR, Brightness violation. Max brightness for HDR is configured in the Settings > QC tab.
- Timecode break

Figure 37. Logging with Show Maximum Values Selected.



A new log file can be created by starting a QC session from the Log drop-down menu:

- Start Log to File (CTRL+I)
- Clear Log Data (CTRL+d)

You can also select the timecode or session clock to be used in the log:

- Log Window Timecode

## Settings Screen

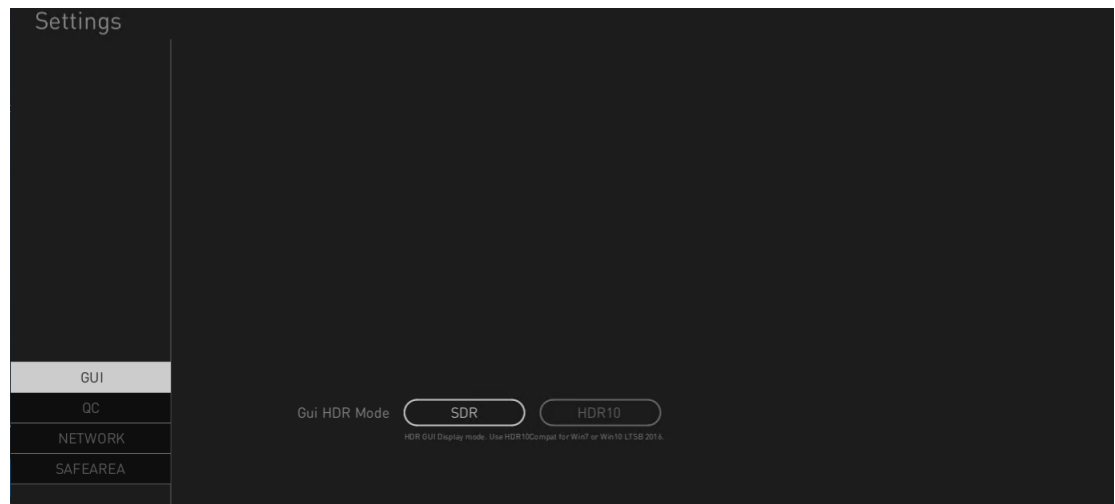
Advanced features are available on the Settings screen, allowing customization of the HDR Image Analyzer GUI for special purposes. The Settings screen is accessed by pressing the TAB key when the top menu line is not displayed. Click on the desired tab to display the available parameters.

**NOTE:** In v2.0 and newer software, scrolling on the settings screen can be accomplished with the mouse's scroll wheel, or by holding down right-click and moving the mouse up and down. Earlier software versions support scrolling only using right-click method.

## GUI Tab

---

Figure 38. Setting Screen, GUI Tab



## GUI HDR Mode

---

The Settings/GUI menu lets you choose between SDR and HDR10 (use HDR10 if you have an HDR enabled DisplayPort monitor).

## QC Tab

---

These advanced settings are for experienced colorists and QC professionals, permitting customization of the values used for analysis.

The QC parameters are saved in Setups. If you Reset a Setup, all values in QC are returned to Defaults.

Figure 39. Setting Screen, QC Tab

The screenshot shows the 'Settings' screen with the 'QC' tab selected. The left sidebar contains a menu with 'GUI', 'QC', 'NETWORK', and 'SAFEAREA'. The main area displays various settings with their current values and descriptions:

- Maximum Brightness For HDR:** 1000 (Valid values are between 100.0 and 10000.0)
- Additional Marker For HDR:** -1 (Valid values are between 100.0 and 10000.0, -1 to turn off)
- Minimum Brightness For CIEXY:** 0.2 (Minimum brightness of pixels to show up on HDR Analyzer)
- Gamut Tolerance:** 0.2 (Percentage of the most saturated pixels to ignore)
- Gamut Warning:** Rec709, P3, Rec2020, Off (Select Gamut Warning ColorSpace)
- Gamut Warning Tolerance:** 0.1 (Tolerance percentage on the Gamut over 100% to accept)
- Brightness Tolerance:** 0.02 (Percentage of the brightest pixels to ignore)
- Camera Base Grey:** 18 (Brightness of Grey Card in nits)
- Camera White Stops Over Grey:** 4 (Camera stops for white clipping warning over base grey)
- Skin Tone X:** 0.407 (Skintone CIE x-coordinate)
- Skin Tone Y:** 0.38 (Skintone CIE y-coordinate)
- Audio Level Warning:** -18 (Warning level for audio, should be between -30 and -8)
- Vectorscope Aid:** Off (Visualization Aid for Vectorscope)

The parameters are largely self explanatory, but the following special features are available.

## Additional Marker for HDR

This control lets you add an additional custom level marker line to the Waveform view. As an example, if mastering for 600 nits Rec2020, you may want to add a "600" line for visual reference.

- Range 100.0 to 10,000.0
- Enter -1 to hide the custom level marker line

## Gamut Warning

The Gamut Warning parameter allows setting when the HDR Image Analyzer will trigger out-of-gamut warnings. You can choose from:

- Rec709
- P3
- Rec2020
- Off

## Skin Tone

You can adjust the location of the skin tone line on the vectorscope display by entering X and Y CIE coordinates. The default location of the skin tone line varies depending on the colorspace being used.

## Audio Level Warning

Customizes the audio level warning threshold, which can vary depending on the country standard.

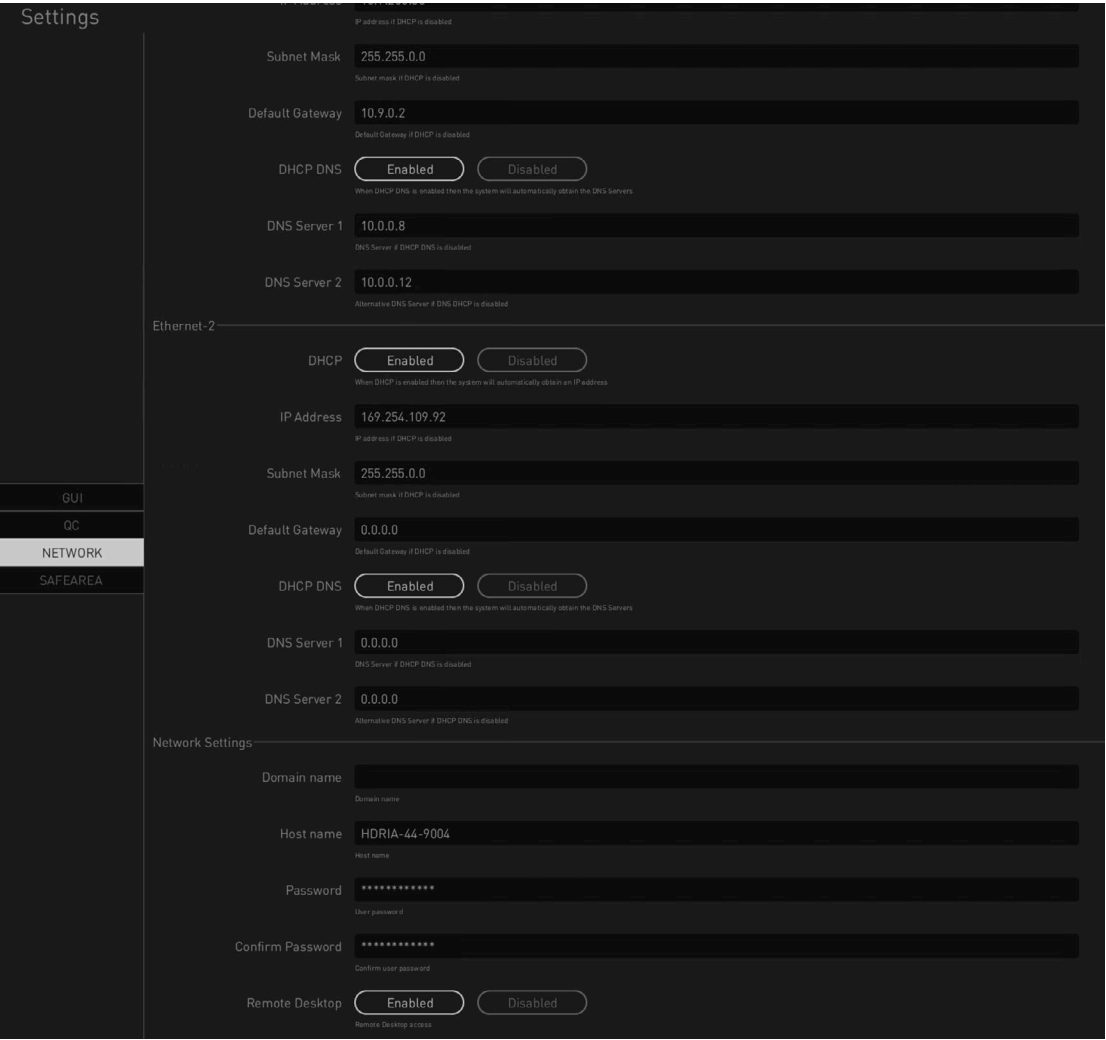
## Vectorscope Aid

When On, draws a grey bounding area around the chroma on the Vectorscope, which can be useful when examining individual pixels.

## NETWORK Tab

The Network settings are used to configure the two network interface cards (NICs) installed in the HDR Image Analyzer chassis.

Figure 40. Setting Screen, Network Tab



## Network Settings

**NOTE:** The lower Network Settings parameters may not initially be visible. Scroll down the screen to see it, using the mouse's scroll wheel or by holding down right-click and moving the mouse up and down.

## Domain and Host Names

---

By default the HDR Image Analyzer is configured for DHCP operation. If a DHCP server is found on power up, these fields will be filled in automatically. You can change these names if you need to adjust the configuration for your network environment.

**NOTE:** *Changing the Domain Name and/or Host Name requires a system reboot.*

## Password Fields

---

**IMPORTANT:** *On the very first HDR Image Analyzer startup, a unique password is generated when the serial number is entered in the Web UI. The password is "hdria<last four digits of serial number>" (for example, "hdria1234"). The default HDR Image Analyzer User Name is "kiosk", and it cannot be changed by the user.*

The password is required for login and Remote Desktop operation. You can change the default password with these two fields.

**NOTE:** *You must exit Setup screen (press Tab) to enable a password change. No system or application reset or reboot is required.*

If a Remote Desktop connection was active when the password is changed, that connection will immediately be dropped.

## Remote Desktop

---

HDR Image Analyzer supports Remote Desktop, allowing control from a separate computer running an RDP client. HDR Image Analyzer supports one connection at a time. Connecting via Remote Desktop will disable the local computer's Analyzer application or any other remote connection. Control can be reacquired at any time from the local computer, or from any remote computer.

Click on the Enabled button on the local computer running HDR Image Analyzer. After launching your RDP client on a remote networked computer, simply type in the IP address of the HDR Image Analyzer and enter your login credentials.

## SAFE AREA Tab

---

These settings are used to customize the Safe Area box displays, including the ability to choose which (or both) regions to display.

Figure 41. Settings Screen, Safe Area Tab

The screenshot shows the 'Settings' screen with the 'SAFEAREA' tab selected. The settings are as follows:

Setting	Value
Safe Area Aspect	1.78
Safe Area Letterbox Opacity	50
Safe Title	On
Safe Title Percent	20
Safe Action	On
Safe Action Percent	10
Safe Area Line Opacity	80
Safe Area Line Width	4

The Safe Area parameters are saved in Setups.

# Chapter 6 – Web Interface

## Overview

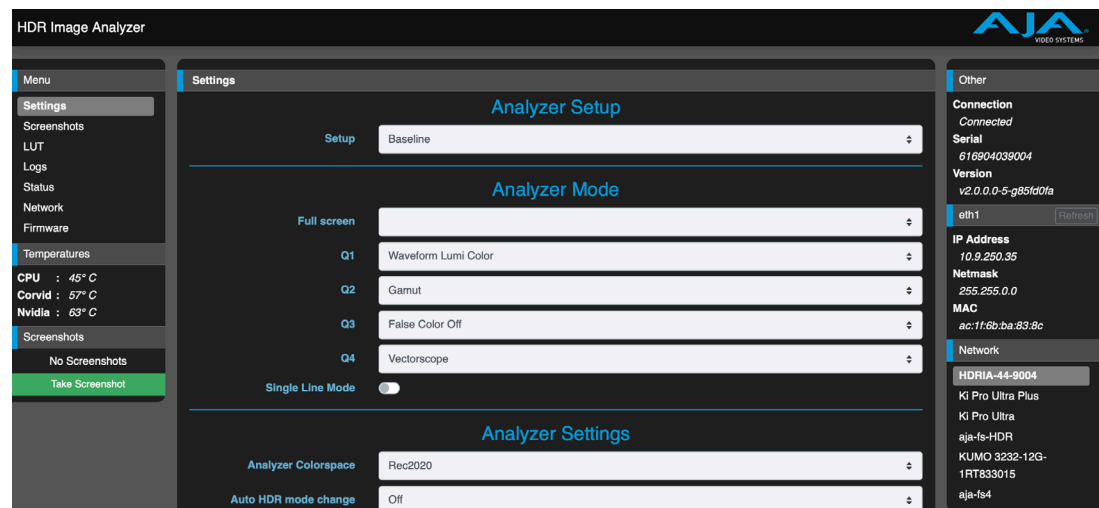
The web interface feature allows users to control the HDR Image Analyzer from a remote computer. It also allows for remote updates, log file and screenshot viewing and transfer, as well as control of all the HDR Image Analyzer's settings. The web interface also displays status information such as software and firmware versions, serial number, IP address, and current temperatures of the CPU, GPU and Corvid card.

## Operation

When your HDR Image Analyzer is operating with v1.1 or newer software, simply connect it to your network via its rear panel RJ-45 connector (or directly to a computer), and enter the IP address of the HDR Image Analyzer into a browser running on your remote computer.

## Web Interface Description

Figure 42. Example HDR Image Analyzer Web Interface Screen Example Menu



### Menu

On the left of each screen is a navigational list of the available screens. Click any of these items to jump to that screen.

- Settings
- Screenshots
- LUT
- Logs
- Status
- Network
- Firmware



## Temperatures

---

Current temperatures of the CPU, GPU, and Corvid card are displayed below the Menu list.

## Screenshots

---

The last captured screenshot (if any) is displayed on the lower left side of all HDR Image Analyzer web UI screens.

Clicking on the **Take Screenshot** button captures the HDR Image Analyzer's current local computer screen (less any displayed drop-down menus).

## Main Display

---

In the center of each screen is the main display showing the status and menu selections for the screen you are viewing. The content of the HDR Image Analyzer web screens closely mirrors the parameter menus displayed on the local computer's HDR Image Analyzer screen.

## Other

---

The right side of the screen lists HDR Image Analyzer system details, including connection status, system serial number, and the installed software version. This information is useful if you ever have to call AJA Technical Support for help.

## eth1

---

Current values for Ethernet 1 are displayed, but are not edited here.

Ethernet settings for both Ethernet 1 and 2 displayed and editable using the Network screen.

## Network

---

The right side of the screen lists AJA systems on the network. If you right-click any system in the list and select Identify, the ID LEDs on the unit will blink to identify it. Click on Identify again to stop the blinking. Another way to identify systems is to notice which system's EXT front panel LED flashes when you change any setting from a remote control device, such as the web browser.

# Web Interface Screens

## Settings Screen

Figure 43. Web Interface Settings Screen, Top

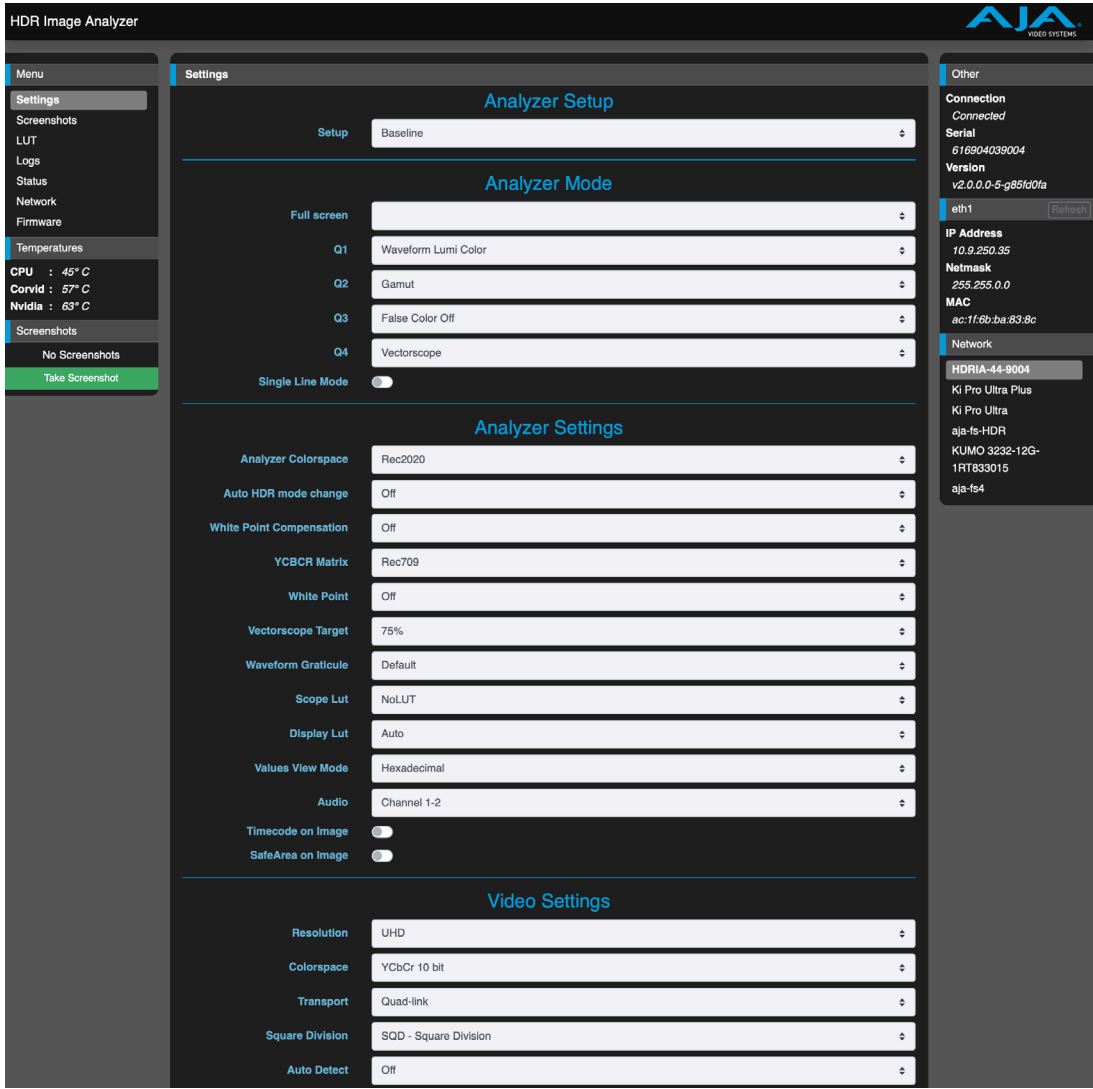
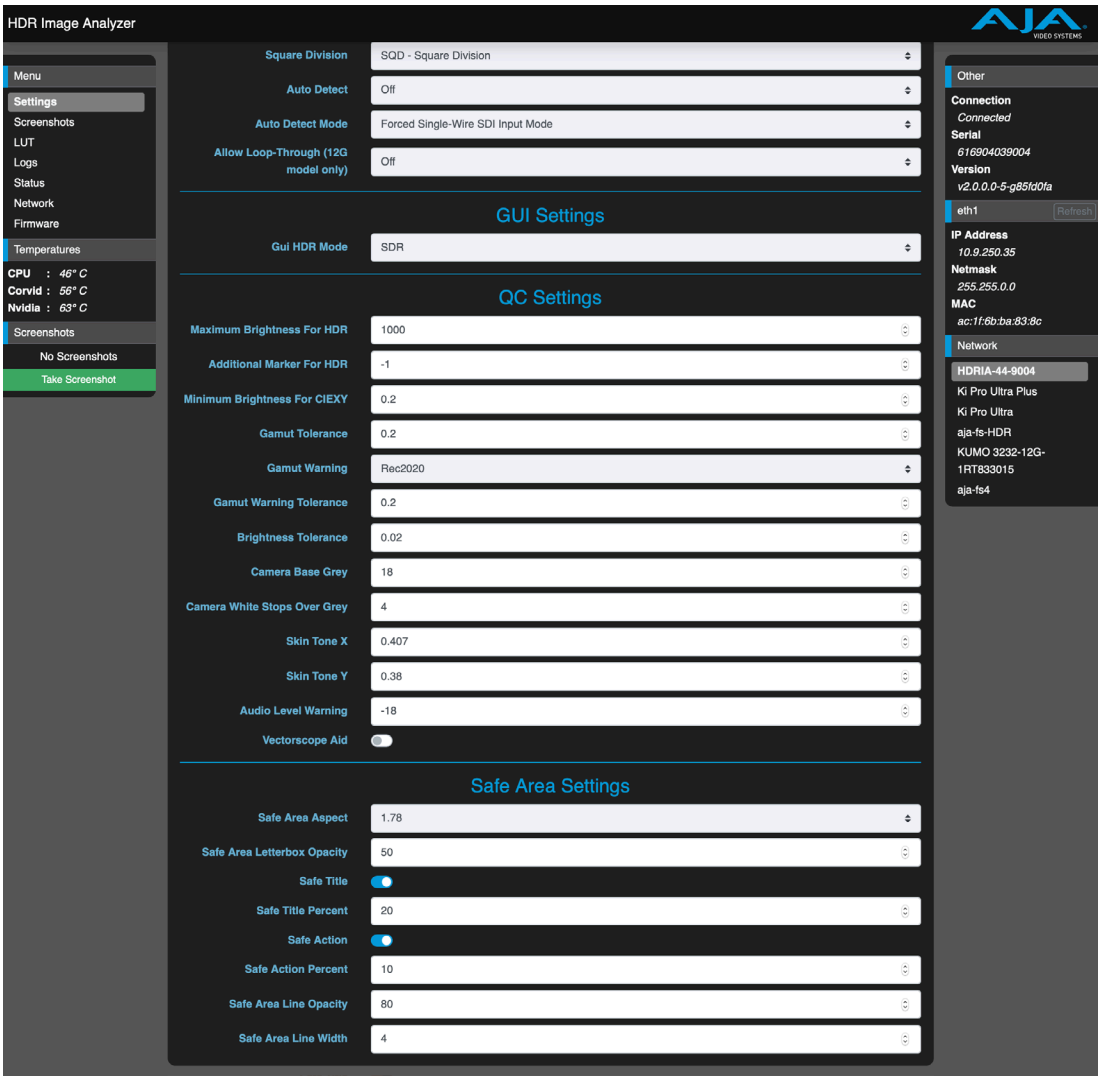
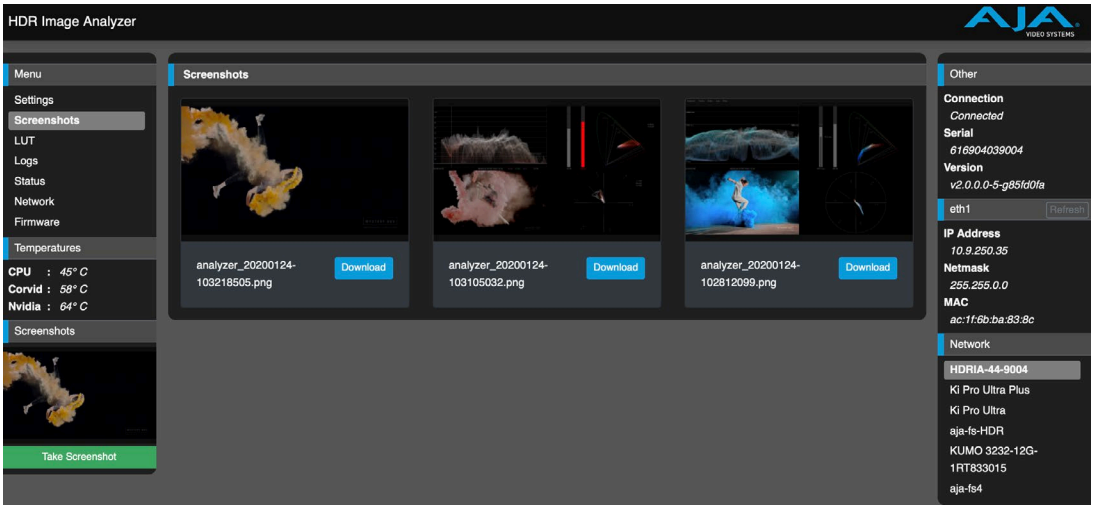


Figure 44. Web Interface Settings Screen, Bottom



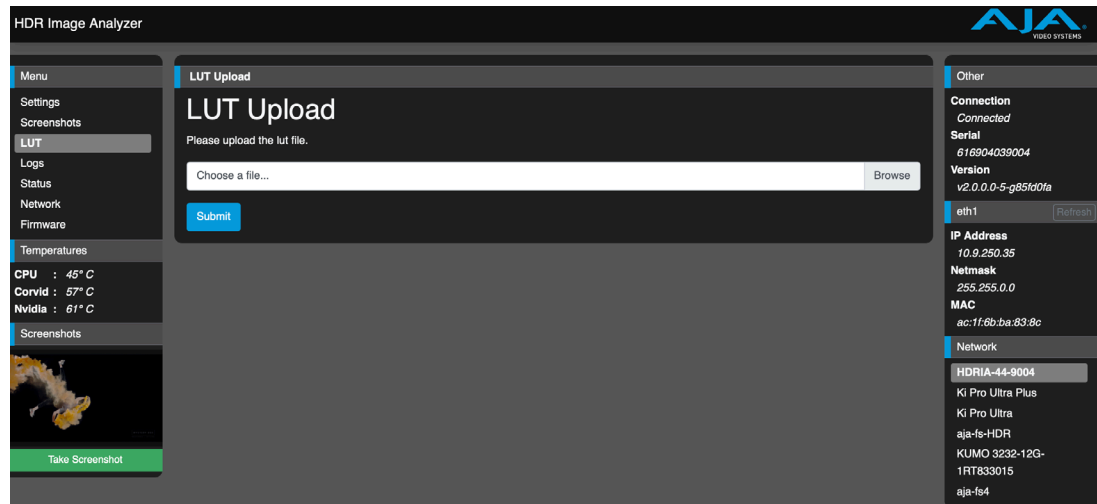
Screenshots Screen

Figure 45. Web Interface Screenshots Screen



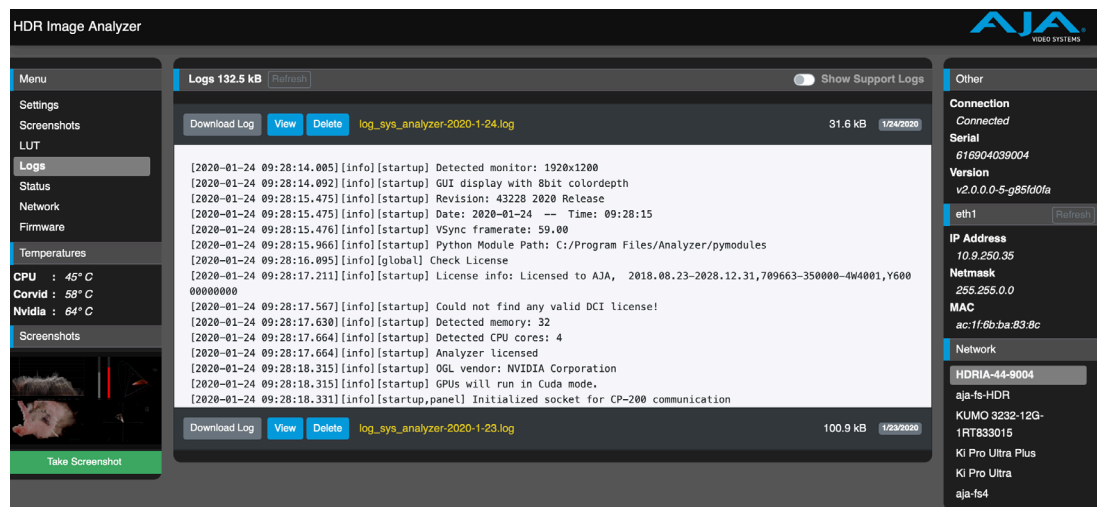
## LUT Screen

Figure 46. Web Interface LUT Screen



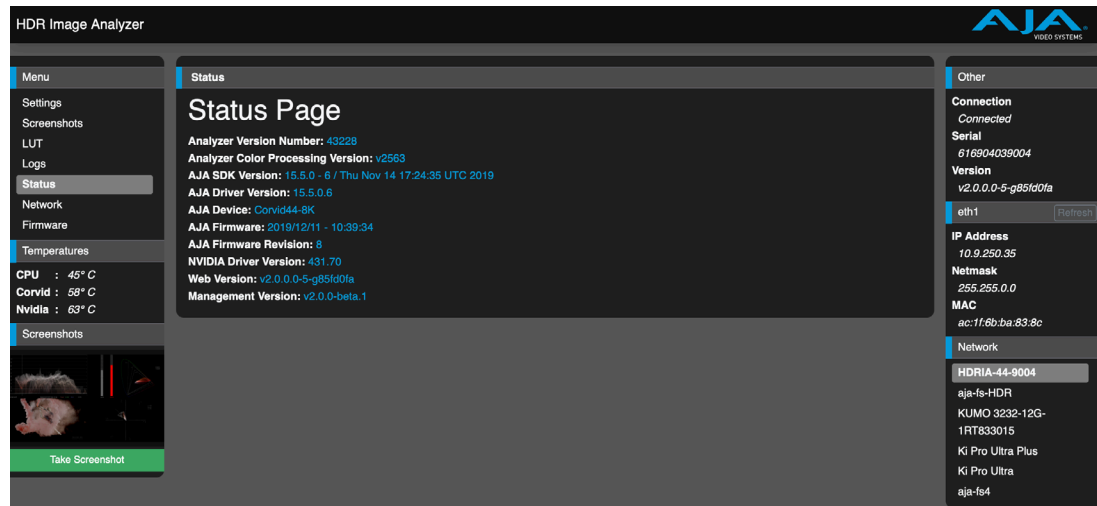
## Logs Screen

Figure 47. Web Interface Logs Screen



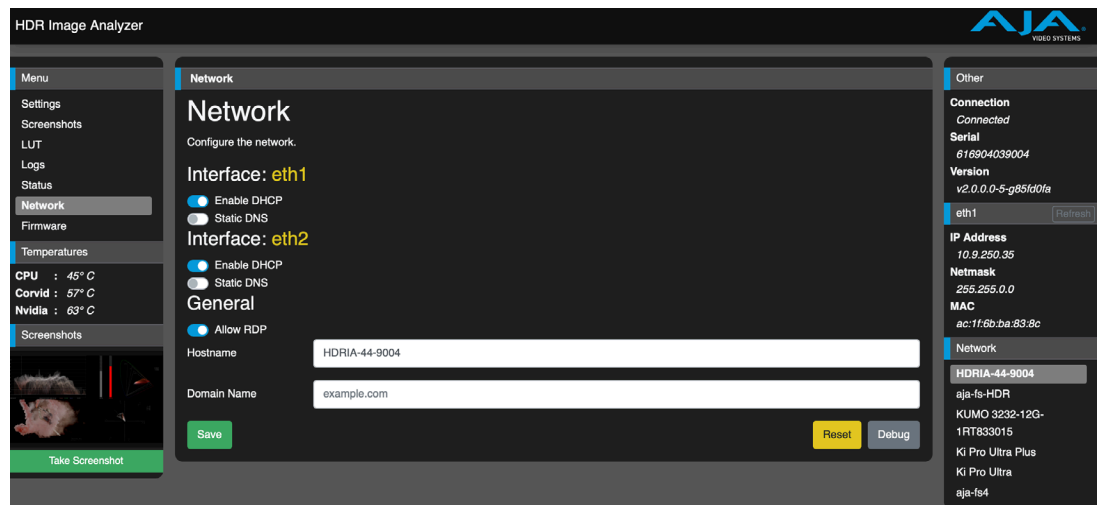
## Status Screen

Figure 48. Web Interface Status Screen



## Network Screen

Figure 49. Web Interface Network Screen

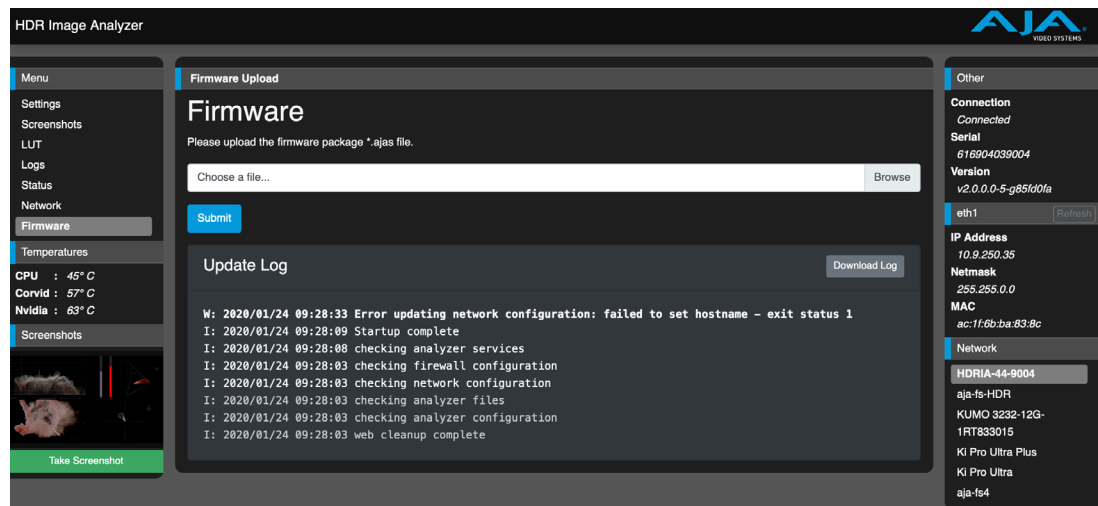


### Allow RDP

Enables Remote Desktop Protocol (RDP). Turn this on if you wish to remote desktop into the unit.

# Firmware Screen

Figure 50. Web Interface Firmware Screen



# Chapter 7 – Menu Reference

## Analyzer Menu Guide

Table 2. Analyzer Menu > Analyzer Mode

Sub Menu	Menu Option 1	Menu Option 2	Menu Option 3 or Description	Keyboard Shortcut
Analyzer Mode	FullScreen	Image	False Color Off	F1
			Brightness	
			Brightness Warning	
			Gamut	
			Gamut Warning	
		Waveform	Waveform Luminance	
			Waveform Lumi Color	F2
			Waveform Color	
			Waveform RGB Color	
			Waveform RGB	
			Waveform YCbCr	
			Waveform YRGB	
			Histogram Luminance	
			Histogram Color	
		Gamut		F3
		Vectorscope		F4
	Q1, Q2, Q3, or Q4	Image	False Color Off	
			Brightness	
			Brightness Warning	
			Gamut	
			Gamut Warning	
		Audio	Audio tool	
		Pixel Picker	Pixel Picker tool	
		Info	Info Tool	
		Log	Log tool	
	Single Line Mode		Enable Single Line Mode	CTRL+space



Table 3. Analyzer Menu > Analyzer Colorspace, White Point Compensation, False Color, YCbCr Matrix, White Point

Menu	Menu Option 1	Menu Option 2	Description	Keyboard Shortcut
Analyzer Colorspace	Auto HDR mode change		When On, colorspace is adjusted automatically according to the SDI flagging between Rec709, HLG Rec2020 and HDR Rec.	
	Camera	Arri LogC Wide Gamut	Set Arri LogC Wide Gamut colorspace	
		Canon Log2	Set Canon Log2 colorspace	
		Canon Log3	Set Canon Log3 colorspace	
		Panasonic VLog/Gamut	Set Panasonic VLog/Gamut colorspace	
		Red WideGamut/Log3G10	Set Red WideGamut/Log3G10 colorspace	
		Sony SLog3/BT2020	Set Sony SLog3/BT2020 colorspace	
		Sony SLog3/SGamut3	Set Sony SLog3/SGamut3 colorspace	
		Sony SLog3/SGamut3Cine	Set Sony SLog3/SGamut3Cine colorspace	
		ACEScct	Sets ACES colorspace	
	SDR	Rec709	Set SDR Rec709 colorspace	CTRL+F10
		P3DCI	Set SDR P3DCI colorspace	
		P3D65	Set SDR P3D65 colorspace	
		Rec2020	Set SDR Rec2020 colorspace	
		XYZ DCI	Set SDR XYZ DCI colorspace	
	HLG	Rec709	Set HLG Rec709 colorspace	
		Rec2020	Set HLG Rec2020 colorspace	CTRL+F11
	HDR	Rec709	Set HDR Rec709 colorspace	
		P3D65	Set HDR RecP3D65 colorspace	
		Rec2020	Set HDR Rec2020 colorspace	CTRL+F12
		XYZ DCI	Set HDR XYZ DCI colorspace	
		XYZ D65	Set HDR XYZ D65 colorspace	
White Point Compensation	Off		No white point compensation	
	D65		Apply D65 white point compensation to the analysis.	
False Color	Brightness		Apply false color to entire Brightness	ALT+F1
	Brightness Warning		Apply false color to Brightness above warning level	ALT+F2
	Gamut		Apply false color to entire Gamut	ALT+F3
	Gamut Warning		Apply false color to Gamut above warning level	ALT+F4
	Off		No false color	ALT+F5
YCbCr Matrix	Rec709		Image is converted to the YUV space, using Rec709.	
	Rec2020		Image is converted to the YUV space, using Rec2020.	
White Point	D65		Display a box on the CIE xy graph showing the D65 white point. Analysis is not affected.	
	DCI		Display a box on the CIE xy graph showing the DCI white point. Analysis is not affected.	
	Off		Hide the white point box on the CIE xy graph.	

*Table 4. Analyzer Mode > Vectorscope Target, Waveform Graticule, Scope and Display LUTs, Analyzer Gain, Zoom, Pixels View*

Menu	Menu Option 1	Description	Keyboard Shortcut
Vectorscope Target	75%		
	100%		
Waveform Graticule	Default		
	Code Values		
	Percentage		
Analyzer Scope LUT	NoLUT	No LUT applied to input signal.	
	(selection list)	Optionally apply a variety of LUTs to the input signal being analyzed.	
Analyzer Display LUT	NoLUT	No LUT applied to display signal.	
	Auto	The LUT is automatically selected in a way that the incoming image looks correct on a 709 SDR monitor.	
	(selection list)	Optionally apply a variety of LUTs to the displayed video image, analysis is not affected.	
Analyzer Gain	Increase Gain	Simple increase of display gain.	CTRL+NumPad Plus Sign
	Decrease Gain	Simple decrease of display gain.	CTRL+NumPad Minus Sign
	Reset Gain	Simple reset of display gain.	CTRL+ENTER
Zoom	Vectorscope Zoom	Apply a 5x magnification to the Vectorscope display.	CTRL+v
	Waveform Zoom	Apply a 4x magnification to the Waveform display.	CTRL+w
Pixels View	Hexadecimal	Color picker displays hexadecimal values	
	Decimal	Color picker displays decimal values	
	Nits	Color picker displays nits (RGB only)	

*Table 5. Analyzer Mode > Audio, Timecode, SafeArea*

Menu	Menu Option 1	Menu Option 2	Description	Keyboard Shortcut
Audio	Phase Meter	Channel 1-2	Show audio phase between Ch 1& 2	
		Channel 3-4	Show audio phase between Ch 3&4	
		Channel 5-6	Show audio phase between Ch 5&6	
		Channel 7-8	Show audio phase between Ch 7&8	
		Channel 1-8	Show four phase diagrams of Ch 1&2, thru Ch 7&8	
		Channel 9-16	Show four phase diagrams of Ch 9&10, thru Ch 15&16	
	Level Meter		Display Level Meter	
Timecode on Image	Enable (on/off)		Show Timecode box on the image.	CTRL+t
SafeArea on Image	Enable (on/off)		Show framing guides on the image.	CTRL+s
System Shutdown			Closes the application and powers off the system.	
System Restart			Restarts the system and automatically relaunches the application.	
Application Restart			Restarts the application without shutting down the system.	

# Setup Menu Guide

Table 6. Analyzer Mode > Audio, Timecode, SafeArea

Menu	Menu Option 1	Description	Keyboard Shortcut
Manage LUTs	Load New LUT	Opens the Windows Explorer browser used to navigate to and load a 3d Mesh or a .cube LUT file.	
	Delete LUT	Opens a list of the currently loaded LUTs that you can select for deletion.	
	Delete All LUTs	Deletes all currently loaded LUTs.	
Create Setup		Opens a dialog box for naming and saving a new Setup file. This file will have the current operational settings.	
Open Setup	analyzer	Selects the "analyzer" Setup file, which is the original setup file that may have been changed.	
	(selection list)	Reloads the selected Setup file.	
Delete <name>		Deletes the currently open Setup file.	
Reset <name>		Resets the currently open Setup file to factory defaults.	

# Video Menu Guide

Table 7. Video Menu Options

Menu	Menu Option 1	Menu Option 2	Description	Keyboard Shortcut
Resolution	720P		Defines a 720p input video signal.	
	HD		Defines a 1080 input video signal.	
	2K		Defines a 2K input video signal.	
	UHD		Defines an UltraHD input video signal.	
	4K		Defines a 4K input video signal.	
	UHD2 (12G model)		Defines an UltraHD2 input video signal.	
	8K (12G model)		Defines an 8K input video signal.	
Colorspace	YCbCr 10Bit			
	RGB 10 Bit			
	RGB 12 Bit			
Transport	Single-link			
	Dual-link			
	Quad-link			
Square Division	SQD		Square Division	
	2SI		Two Sample Interleave	
Auto Detect Options	Auto Detect		Toggles Auto Detect of the incoming SDI link On or Off.	
	Forced Single-Wire SDI Input Mode		Forces single link input.	
	Forced Quad-Wire SDI Input Mode		Forces four link input.	

Menu	Menu Option 1	Menu Option 2	Description	Keyboard Shortcut
Capture	Capture 1		Captures current image and stores in memory 1	ALT+NumPad 1
	Capture 2		Captures current image and stores in memory 2	ALT+NumPad 2
	Capture 3		Captures current image and stores in memory 3	ALT+NumPad 3
	Capture 4		Captures current image and stores in memory 4	ALT+NumPad 4
Recall	Show Live		Show live video signal	CTRL+NumPad 5
	Show Captured 1		Show memory 1	CTRL+NumPad 1
	Recall › Show Captured 2		Show memory 2	CTRL+NumPad 2
	Recall › Show Captured 3		Show memory 3	CTRL+NumPad 3
	Recall › Show Captured 4		Show memory 4	CTRL+NumPad 4
Screenshot	Save Screenshot		Captures a screenshot of the Analyzer UI to the host computer.	CTRL+e
	Copy Screenshots (Opens a file browser for selection of a folder to copy to.)	Copy All	Copies all captured screenshots into the selected folder.	
		Copy Today's	Copies only screenshots captured today into the selected folder.	
		Copy All Except Today's	Copies all screenshots except those captured today into the selected folder	
	Delete Screenshots	Delete All	Deletes all captured screenshots from the host computer.	
		Delete Today's	Deletes only screenshots captured today from the host computer.	
		Delete All Except Today's	Deletes all screenshots except those captured today from the host computer.	

## Log Menu Guide

Table 8. Log Menu Options

Menu	Menu Option 1	Description	Keyboard Shortcut
Start Logging To A File		Creates a new log file for a new QC session on disk	CTRL+I
Reset Log Data		Clears current log data.	CTRL+d
Copy Logs (Opens a file browser for selection of a folder to copy to.)	Copy All Log Files	Copies all log files into the selected folder.	
	Copy Today's Log Files	Copies only log files captured today into the selected folder.	
	Copy All Except Today's Log Files	Copies all log files except those captured today into the selected folder	
Delete Logs	Delete All Log Files	Deletes all log files from the host computer.	
	Delete Today's Log Files	Deletes only log files captured today from the host computer.	
	Delete All Except Today's Log Files	Deletes all log files except those captured today from the host computer.	

Menu	Menu Option 1	Description	Keyboard Shortcut
Log Window Timecode	Timestamp	Comments in the Log Window to be tagged based on session clock.	
	Timecode	Comments in the Log Window to be tagged based on SDI timecode.	
	Auto Timecode/ Timestamp	Shows timecode, timestamp, or both in the Log Window if the information is present on the incoming signal.	
	Timestamp - Timecode	Show both time stamps with session clock priority.	
	Timecode - Timestamp	Show both time stamps with SDI timecode priority.	
	Set Time	Opens a window that allows you to change the time used by the local computer, which will be entered into logs.	
Show Maximum Values		Toggles maximum value display on the Gamut tool on and off.	CTRL+m

## Help Menu Guide

Table 9. Help Menu Options

Menu	Description	Keyboard Shortcut
About	Displays the Application name and Version information.	ALT+Forward Slash(/)
Update Analyzer	Opens a browser allowing HDR Image Analyzer software update.	

## Other Keyboard Shortcuts

Keyboard Shortcut	Description
CTRL+p	Show/Hide Performance window
CTRL + Up/Down Arrow	Moves the single line mode analysis up and down one line at the time.

# Appendix A – Specifications

---

## HDR Image Analyzer 3G Tech Specs

---

### Video Formats

---

- (4K) 4096 x 2160p 23.98, 24, 25, 29.97, 30, 47.95, 48, 50, 59.94, 60
- (UltraHD) 3840 x 2160p 23.98, 24, 25, 29.97, 30, 48, 50, 59.94, 60
- (2K) 2048 x 1080p 23.98, 24, 25, 29.97, 30, 47.95, 48, 50, 59.94, 60
- (2K) 2048 x 1080PsF 23.98, 24, 25, 29.97, 30
- (HD) 1080p 23.98, 24, 25, 29.97, 30, 50, 59.94, 60
- (HD) 1080PsF 23.98, 24, 25, 29.97, 30
- (HD) 1080i 50, 59.94, 60
- (HD) 720p 50, 59.94, 60

### Video Input Digital

---

- 4x 3G-SDI BNC
- 3G-SDI, SMPTE-259/292/296/424/425, 12-bit, 10-bit and 8-bit

### Video Output Digital

---

- 4x 3G-SDI BNC
- 3G-SDI, SMPTE-259/292/296/424/425, 12-bit, 10-bit and 8-bit

### Audio Input Digital

---

- 16-Channel 24-bit SDI embedded, 48 kHz synchronous

### Audio Output Digital

---

- 16-Channel 24-bit SDI embedded, 48 kHz synchronous

### Computer Monitor Output

---

- Display Port Output:
  - Up to UltraHD 60p

### Reference Input

---

- Signal: Analog video sync (Blackburst or Tri-Level)

### Size: (w x d x h)

---

- 1RU form factor
- 17.2" x 16.9" x 1.7" (436.88 x 429.26 x 43.18 mm)

### Weight

---

- 28 lb (12.7kg) in box
- 18 lb (8.2kg) server only

### Power

---

- 100-240 VAC 50/60 Hz (Dual, redundant power supplies)
- 190W typical, 245W Max

## Environment

---

- Safe Operating Temperature: 5 to 35 C (41 to 95 F)
- Safe Storage Temperature (Power OFF): -40 to 60 C (-40 to 140 F)
- Operating Relative Humidity: 8-90% noncondensing
- Nonoperating Relative Humidity: 5-95% noncondensing

# HDR Image Analyzer 12G Tech Specs

---

## SDR/HDR Image Analysis Tool

### HDR Waveform, Histogram and Vectorscope Monitoring

## Video Formats

---

- (8K) 8192 x 4320p 23.98, 24, 25, 29.97, 30, 47.95, 48, 50, 59.94, 60
- (UltraHD2) 7680 x 4320p 23.98, 24, 25, 29.97, 30, 50, 59.94, 60
- (4K) 4096 x 2160p 23.98, 24, 25, 29.97, 30, 47.95, 48, 50, 59.94, 60
- (UltraHD) 3840 x 2160p 23.98, 24, 25, 29.97, 30, 48, 50, 59.94, 60
- (2K) 2048 x 1080p 23.98, 24, 25, 29.97, 30, 47.95, 48, 50, 59.94, 60
- (2K) 2048 x 1080PsF 23.98, 24, 25, 29.97, 30
- (HD) 1080p 23.98, 24, 25, 29.97, 30, 50, 59.94, 60
- (HD) 1080PsF 23.98, 24, 25, 29.97, 30
- (HD) 1080i 50, 59.94, 60
- (HD) 720p 50, 59.94, 60

## Video Input/Output Digital

---

- 4x 12G-SDI BNC
- 12G-SDI, SMPTE-259/292/296/424/425/2081/2082, 12-bit, 10-bit and 8-bit

## SDI I/O

---

- SDI connections are bidirectional
  - 8K/UltraHD2 with 12G-SDI, all four connections must be used for input only
  - 4K/UltraHD with 12G-SDI, input and loop out are simultaneous
  - 4K/UltraHD with 3G-SDI, all four connections must be used for input only
  - 2K/HD, input and loop out are simultaneous

Note: When connections are configured for 12G-SDI or 6G-SDI, only UltraHD2/8K/UltraHD/4K formats are supported.

## Audio Input Digital

---

- 16-channel 24-bit SDI embedded, 48 kHz synchronous

## Audio Output Digital

---

- 16-channel 24-bit SDI embedded, 48 kHz synchronous

## Computer Monitor Output

---

- 4x Display Port Outputs:
  - Up to UltraHD 60p

## Reference Input

---

- Signal: Analog video sync (Blackburst or Tri-Level)



#### Size: (w x d x h)

---

- 1RU form factor
- 17.2" x 16.9" x 1.7" (436.88 x 429.26 x 43.18 mm)

#### Weight

---

- 28 lb (12.7kg) in box
- 18 lb (8.2kg) server only

#### Power

---

- 100-240 VAC 50/60 Hz (Dual, redundant power supplies)
- 190W typical, 245W Max

#### Environment

---

- Safe Operating Temperature: 5 to 35 C (41 to 95 F)
- Safe Storage Temperature (Power OFF): -40 to 60 C (-40 to 140 F)
- Operating Relative Humidity: 8-90% noncondensing
- Nonoperating Relative Humidity: 5-95% noncondensing

# Appendix B – Safety and Compliance

---

## Federal Communications Commission (FCC) Compliance Notices

---

### Class A Interference Statement

---

This equipment has been tested and found to comply with the limits for a Class A digital device, pursuant to Part 15, Subpart B of the FCC Rules. These limits are designed to provide reasonable protection against harmful interference in a residential installation. This equipment generates, uses, and can radiate radio frequency energy and, if not installed and used in accordance with the instructions, may cause harmful interference to radio communications. However, there is no guarantee that interference will not occur in a particular installation. If this equipment does cause harmful interference to radio or television reception, which can be determined by turning the equipment off and on, the user is encouraged to try to correct the interference by one or more of the following measures:

- Reorient or relocate the receiving antenna.
- Increase the separation between the equipment and receiver.
- Connect the equipment into an outlet on a circuit different from that to which the receiver is connected.
- Consult the dealer or an experienced radio/TV technician for help.

### FCC Caution

---

This device complies with Part 15 of the FCC Rules. Operation is subject to the following two conditions: (1) This device may not cause harmful interference, and (2) this device must accept any interference received, including interference that may cause undesired operation.

## Canadian ICES Statement

---

### Canadian Department of Communications Radio Interference Regulations

This digital apparatus does not exceed the Class A limits for radio-noise emissions from a digital apparatus as set out in the Radio Interference Regulations of the Canadian Department of Communications. This Class A digital apparatus complies with Canadian ICES-003.

### Règlement sur le brouillage radioélectrique du ministère des Communications

Cet appareil numérique respecte les limites de bruits radioélectriques visant les appareils numériques de classe A prescrites dans le Règlement sur le brouillage radioélectrique du ministère des Communications du Canada. Cet appareil numérique de la Classe A est conforme à la norme NMB-003 du Canada.

## European Union and European Free Trade Association (EFTA) Regulatory Compliance

---

This equipment may be operated in the countries that comprise the member countries of the European Union and the European Free Trade Association. These countries, listed in the following paragraph, are referred to as The European Community throughout this document:

AUSTRIA, BELGIUM, BULGARIA, CYPRUS, CZECH REPUBLIC, DENMARK, ESTONIA, FINLAND, FRANCE, GERMANY, GREECE, HUNGARY, IRELAND, ITALY, LATVIA, LITHUANIA, LUXEMBOURG, MALTA, NETHERLANDS, POLAND, PORTUGAL, ROMANIA, SLOVAKIA, SLOVENIA, SPAIN, SWEDEN, UNITED KINGDOM, ICELAND, LICHTEINSTEIN, NORWAY, SWITZERLAND

## Declaration of Conformity

Marking by this symbol indicates compliance with the Essential Requirements of the EMC Directive of the European Union 2014/30/EU.



This equipment meets the following conformance standards:

EN 60065: 2014 (T-Mark License),

IEC 60065: 2014 (CB Scheme Report/Certificate)

Additional licenses issued for specific countries available on request.

### Emissions

EN 55032: 2012 + AC: 2013, CISPR 32: 2015,

EN 61000-3-2: 2014, EN 61000-3-3: 2013

### Immunity

EN 55103-2: 2009, EN 61000-4-2:2009, EN 61000-4-3: 2006 + A1:2008 + A2:2010,

EN 61000-4-4: 2004 + A1:2010, EN 61000-4-5:2006, EN 61000-4-6:2009,

EN 61000-4-11:2004

Environments: E2, E3 and E4

The product is also licensed for additional country specific standards as required for the International Marketplace.



**Warning!** This is a Class A product. In a domestic environment, this product may cause radio interference, in which case, the user may be required to take appropriate measures.

**Achtung!** Dieses ist ein Gerät der Funkstörgrenzwertklasse A. In Wohnbereichen können bei Betrieb dieses Gerätes Rundfunkstörungen auftreten, in welchen Fällen der Benutzer für entsprechende Gegenmaßnahmen verantwortlich ist.

**Attention!** Ceci est un produit de Classe A. Dans un environnement domestique, ce produit risque de créer des interférences radioélectriques, il appartiendra alors à l'utilisateur de prendre les mesures spécifiques appropriées..

## Recycling Notice



This symbol on the product or its packaging indicates that this product must not be disposed of with your other household waste. Instead, it is your responsibility to dispose of your waste equipment by handing it over to a designated collection point for the recycling of waste electrical and electronic equipment. The separate collection and recycling of your waste equipment at the time of disposal will help conserve natural resources and ensure that it is recycled in a manner that protects human health and the environment. For more information about where you can drop off your waste for recycling, please contact your local authority, or where you purchased your product.

## Korea KCC Compliance Statement

<b>A급 기기</b> (업무용 방송통신기자재)	이 기기는 업무용(A급) 전자파적합기기로서 판매자 또는 사용자는 이 점을 주의하시기 바라며, 가정외의 지역에서 사용하는 것을 목적으로 합니다.
<b>Class A</b> (Broadcasting Communication Equipment for Office Use)	As an electromagnetic wave equipment for office use (Class A), this equipment is intended to use in other than home area. Sellers or users need to take note of this.

## Taiwan Compliance Statement

警告使用者：  
這是甲類的資訊產品，在居住的環境中使用時，可能會造成射頻干擾，在這種情況下，使用者會被要求採取某些適當的對策。

This is a Class A product based on the standard of the Bureau of Standards, Metrology and Inspection (BSMI) CNS 13438, Class A. In a domestic environment this product may cause radio interference in which case the user may be required to take adequate measures.

## Japan Compliance Statement

この装置は、クラスA情報技術装置です。この装置を家庭環境で使用すると電波妨害を引き起こすことがあります。この場合には使用者が適切な対策を講ずるよう要求されることがあります。 VCCI-A

This is a Class A product based on the standard of the VCCI Council (VCCI 32: 2016). If this equipment is used in a domestic environment, radio interference may occur, in which case, the user may be required to take corrective actions.

## China Compliance Statement

The HDR-IMGYZR-88 has been tested to the following Chinese standards:  
GB/T13837-2012, GB8898-2011, and GB17625.1-2012

This product meets the requirements of implementation rules for compulsory certification (REF NO. CNCA-C08-01:2014) under certificate number 2019010805151936

## Translated Warning and Caution Messages

The following caution statements, warning conventions, and warning messages apply to this product and manual.



Warning Symbol



Hazard Symbol



Caution Symbol

## Before Operation Please Read These Instructions



**Warning!** Read and follow all warning notices and instructions marked on the product or included in the documentation.

**Avertissement!** Lisez et conformez-vous à tous les avis et instructions d'avertissement indiqués sur le produit ou dans la documentation.

**Warnung!** Lesen und befolgen Sie die Warnhinweise und Anweisungen, die auf dem Produkt angebracht oder in der Dokumentation enthalten sind.

**¡Advertencia!** Lea y siga todas las instrucciones y advertencias marcadas en el producto o incluidas en la documentación.

**Aviso!** Leia e siga todos os avisos e instruções assinalados no produto ou incluídos na documentação.

**Avviso!** Leggere e seguire tutti gli avvisi e le istruzioni presenti sul prodotto o inclusi nella documentazione.



**Warning!** Do not use this device near water and clean only with a dry cloth.

**Avertissement!** N'utilisez pas cet appareil près de l'eau et nettoyez-le seulement avec un tissu sec.

**Warnung!** Das Gerät nicht in der Nähe von Wasser verwenden und nur mit einem trockenen Tuch säubern.

**¡Advertencia!** No utilice este dispositivo cerca del agua y límpielo solamente con un paño seco.

**Aviso!** Não utilize este dispositivo perto da água e limpe-o somente com um pano seco.

**Avviso!** Non utilizzare questo dispositivo vicino all'acqua e pulirlo soltanto con un panno asciutto.



**Warning!** Do not block any ventilation openings. Install in accordance with the manufacturer's instructions.

**Avertissement!** Ne bloquez aucune ouverture de ventilation. Suivez les instructions du fabricant lors de l'installation.

**Warnung!** Die Lüftungsöffnungen dürfen nicht blockiert werden. Nur gemäß den Anweisungen des Herstellers installieren.

**¡Advertencia!** No bloquee ninguna de las aberturas de la ventilación. Instale de acuerdo con las instrucciones del fabricante.

**Aviso!** Não obstrua nenhuma das aberturas de ventilação. Instale de acordo com as instruções do fabricante.

**Avviso!** Non ostruire le aperture di ventilazione. Installare in conformità con le istruzioni del fornitore.



**Warning!** Do not install near any heat sources such as radiators, heat registers, stoves, or other apparatus (including amplifiers) that produce heat.

**Avertissement!** N'installez pas l'appareil près d'une source de chaleur telle que des radiateurs, des bouches d'air de chauffage, des fourneaux ou d'autres appareils (amplificateurs compris) qui produisent de la chaleur.

**Warnung!** Nicht in der Nähe von Wärmequellen wie Heizkörpern, Heizregistern, Öfen oder anderen Wärme erzeugenden Geräten (einschließlich Verstärkern) aufstellen.

**¡Advertencia!** No instale cerca de fuentes de calor tales como radiadores, registros de calor, estufas u otros aparatos (incluidos amplificadores) que generan calor.

**Aviso!** Não instale perto de nenhuma fonte de calor tal como radiadores, saídas de calor, fogões ou outros aparelhos (incluindo amplificadores) que produzam calor.

**Avviso!** Non installare vicino a fonti di calore come termosifoni, diffusori di aria calda, stufe o altri apparecchi (amplificatori compresi) che emettono calore



**Warning!** Do not defeat the safety purpose of the polarized or grounding-type plug. A polarized plug has two blades with one wider than the other. A grounding type plug has two blades and a third grounding prong. The wide blade or the third prong are provided for your safety. If the provided plug does not fit into your outlet, consult an electrician for replacement of the obsolete outlet.

**Avertissement!** La sécurité de la prise polarisée ou de la prise de type mise à la terre ne doit en aucun cas être empêchée de fonctionner. Une prise polarisée a deux broches, l'une étant plus large que l'autre. Une prise de type mise à la terre a deux broches et une troisième broche pour la mise à la terre. La broche large ou la troisième broche sont fournies pour votre sécurité. Si la prise fournie ne s'insère pas dans votre prise femelle, consultez un électricien pour le remplacement de la prise femelle obsolète.

**Warnung!** Der Sicherheitszweck des gepolten bzw. Schukosteckers ist zu berücksichtigen. Ein gepolter Stecker verfügt über zwei Pole, von denen einer breiter als der andere ist. Ein Schukostecker verfügt neben den zwei Polen noch über einen dritten Pol zur Erdung. Der breite Pol bzw. der Erdungspol dienen der Sicherheit. Wenn der zur Verfügung gestellte Stecker nicht in Ihren Anschluss passt, konsultieren Sie einen Elektriker, um den veralteten Anschluss zu ersetzen.

**¡Advertencia!** No eche por tierra la finalidad del tipo de enchufe polarizado con conexión a tierra. Un enchufe polarizado tiene dos espigas, una más ancha que la otra. Un enchufe con conexión a tierra tiene dos espigas iguales y una tercera espiga que sirve para la conexión a tierra. La espiga ancha, o la tercera espiga, sirven para su seguridad. Si el enchufe suministrado no encaja en el tomacorriente, consulte con un electricista para reemplazar el tomacorriente obsoleto.

**Aviso!** Não anule a finalidade da segurança da ficha polarizada ou do tipo ligação terra. Uma ficha polarizada tem duas lâminas sendo uma mais larga do que a outra. Uma ficha do tipo de ligação à terra tem duas lâminas e um terceiro terminal de ligação à terra. A lâmina larga ou o terceiro terminal são fornecidos para sua segurança. Se a ficha fornecida não couber na sua tomada, consulte um electricista para a substituição da tomada obsoleta.

**Avviso!** Non compromettere la sicurezza della spina polarizzata o con messa a terra. Una spina polarizzata ha due spinotti, di cui uno più largo. Una spina con messa a terra ha due spinotti e un terzo polo per la messa a terra. Lo spinotto largo o il terzo polo sono forniti per motivi di sicurezza. Se la spina fornita non si inserisce nella presa di corrente, contattare un elettricista per la sostituzione della presa obsoleta.



**Warning!** Since the Mains plug is used as the disconnection for the device, it must remain readily accessible and operable.

**Avertissement!** Puisque la prise principale est utilisée pour débrancher l'appareil, elle doit rester aisément accessible et fonctionnelle.

**Warnung!** Da der Netzstecker als Trennvorrichtung dient, muss er stets zugänglich und funktionsfähig sein.

**¡Advertencia!** Puesto que el enchufe de la red eléctrica se utiliza como dispositivo de desconexión, debe seguir siendo fácilmente accesible y operable.

**Aviso!** Dado que a ficha principal é utilizada como a desconexão para o dispositivo, esta deve manter-se prontamente acessível e funcional.

**Avviso!** Poiché il cavo di alimentazione viene usato come dispositivo di sconnessione, deve rimanere prontamente accessibile e operabile.



**Warning!** Protect the power cord from being walked on or pinched particularly at plugs, convenience receptacles, and the point where they exit from the device.

**Avertissement!** Protégez le cordon d'alimentation pour que l'on ne marche pas dessus ou qu'on le pince, en particulier au niveau des prises mâles, des réceptacles de convenance, et à l'endroit où il sort de l'appareil.

**Warnung!** Vermeiden Sie, dass auf das Netzkabel getreten oder das Kabel geknickt wird, insbesondere an den Steckern, den Steckdosen und am Kabelausgang am Gerät.

**¡Advertencia!** Proteja el cable de energía para que no se le pise ni apriete, en especial cerca del enchufe, los receptáculos de conveniencia y el punto del que salen del equipo.

**Aviso!** Proteja o cabo de alimentação de ser pisado ou de ser comprimido particularmente nas fichas, em tomadas de parede de conveniência e no ponto de onde sai do dispositivo.

**Avviso!** Proteggere il cavo di alimentazione in modo che nessuno ci cammini sopra e che non venga schiacciato soprattutto in corrispondenza delle spine e del punto in cui esce dal dispositivo.



**Warning!** Unplug this device during lightning storms or when unused for long periods of time.

**Avertissement!** Débranchez cet appareil pendant les orages avec éclairsou s'il est inutilisé pendant de longues périodes.

**Warnung!** Das Gerät ist bei Gewitterstürmen oder wenn es über lange Zeiträume ungenutzt bleibt vom Netz zu trennen.

**¡Advertencia!** Desenchufe este dispositivo durante tormentas eléctricas o cuando no se lo utilice por largos periodos del tiempo.

**Aviso!** Desconecte este dispositivo da tomada durante trovoadas ou quando não é utilizado durante longos períodos de tempo.

**Avviso!** Utilizzare soltanto i collegamenti e gli accessori specificati e/o venduti dal produttore, quali il treppiedi e l'esoscheletro.





**Warning!** Refer all servicing to qualified service personnel. Servicing is required when the device has been damaged in any way, such as power-supply cord or plug is damaged, liquid has been spilled or objects have fallen into the device, the device has been exposed to rain or moisture, does not operate normally, or has been dropped.

**Avertissement!** Référez-vous au personnel de service qualifié pour tout entretien. L'entretien est exigé quand l'appareil a été endommagé de quelque manière que ce soit, par exemple lorsque le cordon d'alimentation ou la prise sont endommagés, que du liquide a été versé ou des objets sont tombés dans l'appareil, que l'appareil a été exposé à la pluie ou à l'humidité, ne fonctionne pas normalement ou est tombé.

**Warnung!** Das Gerät sollte nur von qualifizierten Fachkräften gewartet werden. Eine Wartung ist fällig, wenn das Gerät in irgendeiner Weise beschädigt wurde, wie bei beschädigtem Netzkabel oder Netzstecker, falls Flüssigkeiten oder Objekte in das Gerät gelangen, das Gerät Regen oder Feuchtigkeit ausgesetzt wurde, nicht ordnungsgemäß funktioniert oder fallen gelassen wurde.

**¡Advertencia!** Consulte al personal calificado por cuestiones de reparación. El servicio de reparación se requiere cuando el dispositivo ha recibido cualquier tipo de daño, por ejemplo cable o espigas dañadas, se ha derramado líquido o se han caído objetos dentro del dispositivo, el dispositivo ha sido expuesto a la lluvia o humedad, o no funciona de modo normal, o se ha caído.

**Aviso!** Remeta todos os serviços de manutenção para o pessoal de assistência qualificado. A prestação de serviços de manutenção é exigida quando o dispositivo foi danificado mediante qualquer forma, como um cabo de alimentação ou ficha que se encontra danificado/a, quando foi derramado líquido ou caíram objectos sobre o dispositivo, quando o dispositivo foi exposto à chuva ou à humidade, quando não funciona normalmente ou quando foi deixado cair.

**Avviso!** Fare riferimento al personale qualificato per tutti gli interventi di assistenza. L'assistenza è necessaria quando il dispositivo è stato danneggiato in qualche modo, ad esempio se il cavo di alimentazione o la spina sono danneggiati, è stato rovesciato del liquido è stato rovesciato o qualche oggetto è caduto nel dispositivo, il dispositivo è stato esposto a pioggia o umidità, non funziona correttamente o è caduto



**Warning!** Do not open the chassis. There are no user-serviceable parts inside. Opening the chassis will void the warranty unless performed by an AJA service center or licensed facility.

**Avertissement!** Ne pas ouvrir le châssis. Aucun élément à l'intérieur du châssis ne peut être réparé par l'utilisateur. La garantie sera annulée si le châssis est ouvert par toute autre personne qu'un technicien d'un centre de service ou d'un établissement agréé AJA.

**Warnung!** Öffnen Sie das Gehäuse nicht. Keine der Geräteteile können vom Benutzer gewartet werden. Durch das Öffnen des Gehäuses wird die Garantie hinfällig, es sei denn, solche Wartungsarbeiten werden in einem AJA-Service-Center oder einem lizenzierten Betrieb vorgenommen.

**¡Advertencia!** No abra el chasis. El interior no contiene piezas reparables por el usuario. El abrir el chasis anulará la garantía a menos que se lo haga en un centro de servicio AJA o en un local autorizado.

**Advertência!** Não abra o chassi. Não há internamente nenhuma peça que permita manutenção pelo usuário. Abrir o chassi anula a garantia, a menos que a abertura seja realizada por uma central de serviços da AJA ou por um local autorizado.

**Avvertenza!** Non aprire lo chassis. All'interno non ci sono parti riparabili dall'utente. L'apertura dello chassis invaliderà la garanzia se non viene effettuata da un centro ufficiale o autorizzato AJA.



**Warning!** Disconnect the external AC power supply line cord(s) from the mains power before moving the unit.

**Avertissement!** Retirez le ou les cordons d'alimentation en CA de la source d'alimentation principale lorsque vous déplacez l'appareil.

**Warnung!** Trennen Sie die Wechselstrom-Versorgungskabel vom Netzstrom, bevor Sie das Gerät verschieben.

**¡Advertencia!** Cuando mueva la unidad desenchufe de la red eléctrica el/los cable(s) de la fuente de alimentación CA tipo brick.

**Advertência!** Remova os cabos CA de alimentação brick da rede elétrica ao mover a unidade.

**Avvertenza!** Scollegare il cavo dell'alimentatore quando si sposta l'unità.



**Warning!** Only use attachments and accessories specified and/or sold by the manufacturer.

**Avertissement!** Utilisez seulement les attaches et accessoires spécifiés et/ou vendus par le fabricant.

**Warnung!** Verwenden Sie nur Zusatzgeräte und Zubehör angegeben und / oder verkauft wurde durch den Hersteller.

**¡Advertencia!** Utilice solamente los accesorios y conexiones especificados y/o vendidos por el fabricante.

**Aviso!** Utilize apenas equipamentos/acessórios especificados e/ou vendidos pelo fabricante.

**Avviso!** Utilizzare soltanto i collegamenti e gli accessori specificati e/o venduti dal produttore.



**Hazard!** High Voltage. This situation or condition can cause injury due to electric shock.

**Avertissement!** Tension élevée. Cette situation ou condition peut causer des blessures dues à un choc électrique.

**Warnung!** Hochspannung. Diese Situation oder Bedingung kann zu Verletzungen durch Stromschlag führen.

**¡Advertencia!** Alto voltaje . Esta situación o condición puede causar lesiones debidas a una descarga eléctrica.

**Aviso!** Alta Tensão . Esta situação ou condição pode causar danos devido a choques elétricos.

**Avviso!** Alta tensione. Questa situazione o condizione può causare lesioni a causa di scosse elettriche.



**Warning!** Dual Power Cord Notice—please read this. To reduce the risk of electrical shock, disconnect both power cords before servicing equipment.

**Avertissement!** Avis concernant la double alimentation électrique — à lire soigneusement. Pour éviter tout risque d'électrocution, débranchez les deux câbles électriques avant d'intervenir sur l'équipement.

**Achtung!** Hinweis auf Doppel-Netzkabel—bitte lesen. Um das Risiko eines Elektroschocks zu verringern, müssen beide Netzkabel ausgestöpselt werden, bevor die Vorrichtung gewartet wird.

**Avvertenza.** Avviso concernente il cavo di alimentazione doppio – leggere attentamente. Per ridurre il rischio di elettrocuzione, scollegare entrambi i cavi di alimentazione prima di eseguire la manutenzione o riparazioni di questo apparecchio.

**Aviso!** Aviso de Cabo Elétrico Duplo - por favor, leia isto. Para reduzir o risco de choque elétrico, desconecte ambos os cabos elétricos antes de fazer manutenção ao equipamento.

**¡Advertencia!** Aviso del doble cable de alimentación - leer esto por favor. Para reducir el riesgo de descarga eléctrica, desconecte ambos cables de alimentación antes de dar servicio al equipo.



**Caution!** To meet safety regulations for leakage current, connect the dual power supplies to separate branch circuits.

**¡Advertencia!** Para cumplir con las normas de seguridad para la corriente de fuga, conecte las dos fuentes de alimentación para circuitos derivados diferentes.

**Attention!** Pour répondre aux mesures de sécurité concernant le courant de fuite, raccorder les sources d'alimentation doubles à des circuits de dérivation distincts.

**Warnung!** Zur Erfüllung der Sicherheitsbestimmungen bezüglich Reststrom schließen Sie bitte die zwei Netzteile an unterschiedlichen Abzweigleitungen an.

**Cuidado!** Para atender aos regulamentos de segurança para correntes de fuga, conecte as fontes duplas a circuitos elétricos separados.

**Attenzione!** Per soddisfare le norme di sicurezza sulla corrente di perdita, collegare i doppi alimentatori a circuiti derivati separati.



**Warning!** Hazardous Voltages! The safe operation of this product requires that a protective earth connection be provided. This protective earth is provided by the grounding conductor in the equipment's supply cord. To reduce the risk of electrical shock to operator and service personnel, this ground conductor must be connected to an earthed ground.

**Avertissement :** tensions dangereuses — Pour utiliser ce produit en toute sécurité, il faut un raccordement à la terre. Ce raccordement s'effectue par l'intermédiaire du connecteur de terre dans le cordon d'alimentation de l'équipement. Pour réduire le risque d'électrocution de l'opérateur ou du personnel de maintenance, ce cordon avec conducteur de terre doit être branché sur une prise reliée à la terre.

**Achtung!** Gefährliche Spannungen — Sichere Bedienung dieses Geräts erfordert, dass ein Schutzleiteranschluss vorgesehen wird. Dieser Schutzleiteranschluss wird mittels der Erdungsleitung im Netzkabel der Vorrichtung vorgesehen. Um die Gefahr eines Elektroschocks für Bedien- und Wartungspersonal zu verringern, muss diese Erdungsleitung mit einer geerdeten Masse verbunden werden.

**Avvertenza** – Alte tensioni – Il funzionamento in sicurezza di questo prodotto richiede una presa di terra, che viene fornita dal conduttore di messa a terra presente nel cavo di alimentazione dell'apparecchio. Per ridurre il rischio di elettrocuzione per l'operatore e il personale di manutenzione, tale conduttore deve essere collegato a un punto al potenziale di terra.

**Advertencia** de voltajes peligrosos — El funcionamiento seguro de este producto requiere que se proporcione una conexión terrestre protegida. Esta protección terrestre es proporcionada por el conductor de conexión en la tierra del cable de alimentación del equipo. Para reducir el riesgo de descarga eléctrica al operador y el personal de servicio, este conductor de conexión de la tierra debe ser conectado a la misma tierra.

# Colorfront Copyright Notices

---

FreeType 2.3.9, 2.3.5

FreeType License (FTL)

Copyright © 2008 The FreeType Project (HYPERLINK "<https://protect-us.mimecast.com/s/GrHNC68zR0IWmW4i6fp15>" \t "\_blank" [www.freetype.org](http://www.freetype.org)). All rights reserved.

HYPERLINK "<https://protect-us.mimecast.com/s/p4YKC73WLAhRNRBUBNmyL>" \t "\_blank" <http://www.freetype.org/FTL.TXT>

FTGL - OpenGL font library 2.1.3

GNU LESSER GENERAL PUBLIC LICENSE

Version 2.1, February 1999

Copyright © 2001-2004 Henry Maddocks <HYPERLINK "<mailto:ftgl@opengl.geek.nz>" \t "\_blank" [ftgl@opengl.geek.nz](mailto:ftgl@opengl.geek.nz)>

Copyright © 2008 Sam Hocevar <HYPERLINK "<mailto:sam@zoy.org>" \t "\_blank" [sam@zoy.org](mailto:sam@zoy.org)>

Copyright © 2008 Sean Morrison <HYPERLINK "<mailto:learner@brlcad.org>" \t "\_blank" [learner@brlcad.org](mailto:learner@brlcad.org)>

HYPERLINK "<https://protect-us.mimecast.com/s/SOzVC82B69ukqkytM7qV0>" \t "\_blank" <http://ftgl.sourceforge.net/docs/html/index.html>

Inconsolata font

SIL OPEN FONT LICENSE

Version 1.1 - 26 February 2007

Created by Raph Levien using his own tools and FontForge. Copyright 2006 Raph Levien. Released under the SIL Open Font License, HYPERLINK "<https://protect-us.mimecast.com/s/cuUpC9rLQ2hOqOwHPJLAe>" \t "\_blank" <http://scripts.sil.org/OFL>.

Python 2.7

HYPERLINK "<https://protect-us.mimecast.com/s/iiVqC0RXV9uyByAt3o0C6>" \t "\_blank" BEOPEN.COM LICENSE AGREEMENT FOR PYTHON 2.0

Copyright © 2001-2019 Python Software Foundation; All Rights Reserved

HYPERLINK "<https://protect-us.mimecast.com/s/laylCgJQLksByBziZVHHj>" \t "\_blank" <http://docs.python.org/license.html>

# SOFTWARE LICENSE AGREEMENT

---

AJA VIDEO SYSTEMS, INC.

THIS IS AN AGREEMENT BETWEEN YOU AND AJA VIDEO SYSTEMS, INC. ("AJA") THAT GOVERNS YOUR USE OF the software ACCOMPANYING THIS LICENSE (E.G., AS installed on the device with which this license is provided).

The "AJA Software" referenced in this Agreement includes all such software, whether made available to you on disk, in read only memory, on any other media or in any other form, and all updates, corrections, enhancements and new versions of such software made available by AJA, together with all related documentation. BY INSTALLING OR USING THE AJA SOFTWARE, YOU ARE AGREEING TO BE BOUND BY THE TERMS OF THIS AGREEMENT. IF YOU DO NOT AGREE TO THE TERMS OF THIS AGREEMENT, DO NOT INSTALL OR USE IT AND, IF APPLICABLE, RETURN THE AJA SOFTWARE TO THE PLACE WHERE YOU OBTAINED IT FOR A REFUND.

1. **License Grant.** AJA hereby grants you a nonexclusive, personal, non-sublicenseable and limited license to install and use AJA Software on a computer or AJA device. The foregoing license also includes the right to make copies of the AJA Software in machine-readable form for installation and backup purposes only, and provided that each copy you make must include all copyright or other proprietary notices contained on the original.
2. **Limitations.** You may not decompile, reverse engineer, disassemble, modify, or create derivative works of the AJA Software or any part thereof except to the extent (if any) authorized by applicable law notwithstanding the foregoing restriction. You may not rent, lease, lend, loan, distribute or act as a service bureau or "cloud service" provider with respect to use of the AJA Software or any functionality thereof. THE AJA SOFTWARE IS NOT INTENDED FOR USE IN THE OPERATION OF NUCLEAR FACILITIES, AIRCRAFT NAVIGATION OR COMMUNICATION SYSTEMS, AIR TRAFFIC CONTROL SYSTEMS, LIFE SUPPORT MACHINES OR OTHER EQUIPMENT IN WHICH THE FAILURE OF THE AJA SOFTWARE COULD LEAD TO DEATH, PERSONAL INJURY, OR SEVERE PHYSICAL OR ENVIRONMENTAL DAMAGE.
3. **Reservation of Rights.** The AJA Software is protected by law, including without limitation copyright law. The AJA Software is licensed, not sold, to you. AJA and its licensors reserve all rights not expressly granted to you by this Agreement. You own the media on which the AJA Software is recorded but AJA and/or AJA's licensor(s) retain ownership of the AJA Software itself. You may not use the AJA Software for any illegal purpose.
4. **Transfer.** You may make a one-time permanent transfer of all of your license rights to the AJA Software to another person or entity, provided that: (a) you transfer all of the AJA Software, including all its component parts, original media, printed materials and this Agreement; (b) you do not retain any copies of the AJA Software, including any copies stored on a computer or other device; and (c) you transfer the AJA Software subject to this Agreement, and the person or entity receiving the AJA Software accepts the terms and conditions of this Agreement.
5. **NFR (Not for Resale) Copies and Add-On Features:** Notwithstanding anything to the contrary in this Agreement, (a) AJA Software that is labeled "Not for Resale" or otherwise provided to you on a promotional or demonstration basis may be used only for your demonstration, testing and evaluation purposes and may not be resold or transferred; and (b) AJA may make available certain software components ("Add-On Features") under separate terms and conditions, in which case those separate terms and conditions apply and the Add-On Features are not considered AJA Software under this Agreement.
6. **Termination.** Your rights in the AJA Software are conditioned on complying with this Agreement, and those rights (together with this Agreement) will terminate automatically, without notice from AJA, if you fail to comply with any term(s) of this Agreement. Upon termination of this Agreement, you must cease all use of the AJA Software and destroy all copies, full or partial, of the AJA Software in your possession or control.

7. Limited Warranty on AJA Software. If you comply with all terms of this Agreement and use the AJA Software in accordance with its documentation, and you install any patches or other updates made available to the AJA Software by AJA, AJA warrants that the AJA Software will perform substantially in accordance with its documentation for a period of ninety (90) days from the date of your original retail purchase. Your exclusive remedy under this warranty will be, at AJA's option, a refund of the purchase price of the product containing the AJA Software or an update to or replacement of the AJA Software (or applicable component of it). THIS LIMITED WARRANTY AND ANY IMPLIED WARRANTIES ON THE AJA SOFTWARE INCLUDING, BUT NOT LIMITED TO, ANY WARRANTIES OF MERCHANTABILITY, OF SATISFACTORY QUALITY, OR OF FITNESS FOR A PARTICULAR PURPOSE, ARE LIMITED IN DURATION TO NINETY (90) DAYS FROM THE DATE OF ORIGINAL RETAIL PURCHASE. SOME JURISDICTIONS DO NOT ALLOW LIMITATIONS ON HOW LONG A WARRANTY LASTS, SO THE ABOVE LIMITATION MAY NOT APPLY TO YOU. THIS LIMITED WARRANTY GIVES YOU SPECIFIC LEGAL RIGHTS, AND YOU MAY ALSO HAVE OTHER RIGHTS WHICH VARY BY JURISDICTION.

8. Disclaimer of Other Warranties on Aja Software. EXCEPT FOR THE LIMITED WARRANTY ON AJA SOFTWARE SET FORTH ABOVE, AJA AND AJA'S LICENSORS (COLLECTIVELY REFERRED TO AS "AJA" FOR THE PURPOSES OF SECTIONS 8 AND 9) HEREBY DISCLAIM ALL WARRANTIES AND CONDITIONS WITH RESPECT TO THE AJA SOFTWARE, WHETHER EXPRESS, IMPLIED OR STATUTORY, INCLUDING, BUT NOT LIMITED TO, THE IMPLIED WARRANTIES AND/OR CONDITIONS OF MERCHANTABILITY, OF SATISFACTORY QUALITY, OF FITNESS FOR A PARTICULAR PURPOSE, OF ACCURACY, AND OF QUIET ENJOYMENT. FURTHER, AJA DOES NOT MAKE ANY WARRANTY REGARDING NON-INFRINGEMENT OF THIRD PARTY RIGHTS. SUBJECT ONLY TO THE LIMITED WARRANTY SET FORTH IN SECTION 7, YOU EXPRESSLY ACKNOWLEDGE AND AGREE THAT USE OF THE AJA SOFTWARE IS AT YOUR SOLE RISK. AJA DOES NOT WARRANT AGAINST INTERFERENCE WITH YOUR ENJOYMENT OF THE AJA SOFTWARE, THAT THE AJA SOFTWARE WILL MEET YOUR REQUIREMENTS, THAT THE OPERATION OF THE AJA SOFTWARE WILL BE UNINTERRUPTED OR ERROR-FREE, OR THAT DEFECTS IN THE AJA SOFTWARE WILL BE CORRECTED. NO ORAL OR WRITTEN INFORMATION OR ADVICE GIVEN BY AJA OR AN AJA AUTHORIZED REPRESENTATIVE WILL CREATE A WARRANTY. SOME JURISDICTIONS DO NOT ALLOW THE EXCLUSION OF IMPLIED WARRANTIES OR LIMITATIONS ON APPLICABLE STATUTORY RIGHTS OF A CONSUMER, SO SOME OR ALL OF THE TERMS OF THIS PARAGRAPH MAY NOT APPLY TO YOU.

9. Limitation of Liability. TO THE EXTENT NOT PROHIBITED BY LAW, IN NO EVENT WILL AJA BE LIABLE FOR PERSONAL INJURY, OR ANY INCIDENTAL, SPECIAL, INDIRECT OR CONSEQUENTIAL DAMAGES OR LOST PROFITS WHATSOEVER, INCLUDING, WITHOUT LIMITATION, DAMAGES FOR LOSS OF DATA, BUSINESS INTERRUPTION OR ANY OTHER COMMERCIAL DAMAGES OR LOSSES, ARISING OUT OF OR RELATED TO YOUR USE OR INABILITY TO USE THE AJA SOFTWARE, HOWEVER CAUSED, REGARDLESS OF THE THEORY OF LIABILITY (E.G., WHETHER UNDER CONTRACT, TORT OR OTHERWISE) AND EVEN IF AJA HAS BEEN ADVISED OF THE POSSIBILITY OF SUCH DAMAGES. In no event will AJA's total liability to you for all damages (INCLUDING WITHOUT LIMITATION BREACH OF WARRANTY) exceed the amount of fifty dollars (\$50.00). The foregoing limitations will apply even if the any remedy set forth in this agreement fails of its essential purpose. SOME JURISDICTIONS DO NOT ALLOW THE LIMITATION OF LIABILITY FOR PERSONAL INJURY, OR OF INCIDENTAL OR CONSEQUENTIAL DAMAGES, SO SOME OR ALL OF THE TERMS OF THIS PARAGRAPH MAY NOT APPLY TO YOU.

10. Export Law Assurances. You may not use or otherwise export or reexport the AJA Software except as authorized by United States law and the laws of the jurisdiction in which the AJA Software was obtained. In particular, but without limitation, the AJA Software may not be exported or re-exported (a) into (or to a national or resident of) any U.S. embargoed countries, or (b) to anyone on the U.S. Treasury Department's list of Specially Designated Nationals or the U.S. Department of Commerce Denied Persons List or Entity List or any similar legal designation. By using the AJA Software, you represent and warrant that you are not located in, under control of, or a national or resident of any such country or on any such list.

11. Government End Users. The AJA Software including its documentation is a "Commercial Item", as that term is defined at 48 C.F.R. § 2.101, consisting of "Commercial Computer Software" and "Commercial Computer Software Documentation", as such terms are used in 48 C.F.R. § 12.212 or 48 C.F.R. § 227.7202 (or their successors), as applicable. Consistent with these provisions, the AJA Software is licensed to U.S. Government end users (a) only as a Commercial Item and (b) with only those rights as are granted to all other end users pursuant to this Agreement. Unpublished-rights reserved under the copyright laws of the United States.

12. Controlling Law and Severability. This Agreement will be governed by and construed in accordance with the laws of the State of California, as applied to agreements entered into and to be performed entirely within California between California residents. This Agreement will not be governed by the United Nations Convention on Contracts for the International Sale of Goods, the application of which is expressly excluded. If for any reason a court of competent jurisdiction finds any provision, or portion thereof, to be unenforceable, the remainder of this Agreement will continue in full force and effect.

13. Complete Agreement; Governing Language. This Agreement constitutes the entire agreement between the parties with respect to the use of the AJA Software licensed hereunder and supersedes all prior or contemporaneous understandings regarding such subject matter. No amendment to or modification of this Agreement will be binding unless in writing and signed by AJA. Any translation of this Agreement is intended for convenience and to meet local requirements and in the event of a dispute between the English and any non-English versions, the English version of this Agreement will govern.



# Warranty and Liability Information

---

## Limited Warranty on Hardware

---

AJA Video Systems, Inc. (AJA Video) warrants that the hardware product, not including storage modules or software components, will be free from defects in materials and workmanship for a period of three years from the date of purchase. AJA Video warrants that the storage modules provided as part of the hardware product will be free from defects in materials and workmanship for a period of one year from the date of purchase. AJA Video provides a separate software warranty as part of the license agreement applicable to software components.

If the Customer brings a valid claim under this limited warranty for a hardware product or storage module (hereafter, a “product”) during the applicable warranty period, AJA Video will, at its sole option and as the Customer’s sole remedy for breach of the above warranty, provide one of the following remedies:

- Repair or facilitate the repair the product within a reasonable period of time, free of charge for parts and labor.
- Replace the product with a direct replacement or with a product that performs substantially the same function as the original product.
- Issue a refund of the original purchase price less depreciation to be determined based on the age of the product at the time remedy is sought under this limited warranty.

To obtain service under this warranty, the Customer must notify AJA Video of the defect before expiration of the warranty period and make suitable arrangements for the performance of service by contacting AJA Video support through the channels set forth on the support contacts web page at <https://www.aja.com/support>.

Except as stated, the Customer shall bear all shipping, packing, insurance and other costs, excluding parts and labor, to effectuate repair. Customer shall pack and ship the defective product to a service center designated by AJA Video, with shipping charges prepaid. AJA Video shall pay to return the product to Customer, but only if to a location within the country in which the AJA Video service center is located. SOME JURISDICTIONS DO NOT ALLOW THE EXCLUSION OF IMPLIED WARRANTIES OR LIMITATIONS ON APPLICABLE STATUTORY RIGHTS OF A CONSUMER, SO SOME OR ALL OF THE TERMS OF THIS PARAGRAPH MAY NOT APPLY TO YOU.

## Limitation of Liability

---

Under no circumstances shall AJA video BE LIABLE IN ANY WAY FOR ANY LOST, CORRUPTED OR DESTROYED DATA, FOOTAGE OR WORK, OR FOR ANY OTHER INDIRECT, SPECIAL, INCIDENTAL OR CONSEQUENTIAL DAMAGES OR LOST PROFITS, OR FOR ANY THIRD PARTY CLAIM, IN CONNECTION WITH THE PRODUCT, WHETHER RESULTING FROM DEFECTS IN THE PRODUCT, SOFTWARE OR HARDWARE FAILURE, OR ANY OTHER CAUSE WHATSOEVER, EVEN IF AJA VIDEO HAS BEEN ADVISED OF THE POSSIBILITY OF SUCH DAMAGES. AJA VIDEO’S LIABILITY IN CONNECTION WITH THE PRODUCT SHALL UNDER NO CIRCUMSTANCES EXCEED THE PURCHASE PRICE PAID FOR THE PRODUCT. The foregoing limitations apply even if any remedy set forth in this LIMITED WARRANTY fails of its essential purpose. SOME JURISDICTIONS DO NOT ALLOW THE LIMITATION OF LIABILITY FOR PERSONAL INJURY, OR OF INCIDENTAL OR CONSEQUENTIAL DAMAGES, SO SOME OR ALL OF THE TERMS OF THIS PARAGRAPH MAY NOT APPLY TO YOU.

## Governing Law and Language; Your Rights

---

This limited warranty is the only warranty provided by AJA Video on the hardware product. It supersedes all prior or contemporaneous understandings regarding such subject matter. No amendment to or modification of this warranty will be binding unless in writing and signed by AJA Video. The laws of the State of California, USA will govern this warranty and any dispute arising from it. Any translation of this

Agreement is intended for convenience and to meet local requirements and in the event of a dispute between the English and any non-English versions, the English version of this warranty will govern. This limited warranty gives you specific legal rights and you may have other rights that vary from jurisdiction to jurisdiction, some of which are noted above.

# Index

---

## Symbols

2SI LFR and HFR Input 29

## A

Additional Marker for HDR 39  
AJA Support 2  
Allow RDP 48  
Analyzer Application 7  
Analyzer Modes 15  
Analyzer Scope LUT 36  
Audio Level Meter 24  
Audio Level Warning 40  
Audio Monitoring 23  
Audio Phase Meter 23  
Auto Detect Options 29  
Auto HDR Mode Change 30

## B

Brightness Bar 20

## C

Camera Log Analysis 30  
Capture 29  
Chassis Front View 7  
Chassis Rear View 7, 8  
CIE xy Gamut View 31  
CIE xy Graph 20  
Colorspace 28  
Copy Screenshot 30  
Create Setup 27

## D

Delete Screenshot 30  
Delete Setup 27  
Display LUT 35  
Display Scope LUT 36  
Domain Name 41  
Drop-Down Menu Navigation 14

## F

False Color 33  
Features  
    Hardware 6  
    Software 5  
Firmware Screen  
    Web Interface 49  
Framing Guides 22

## G

Gamut Bar 20  
Gamut Mode 20  
Gamut Warning 39  
GUI HDR Mode 38  
GUI Overview 12  
GUI Tab 38

## H

Hardware Features 6  
Hardware Installation 9  
Hardware Overview 7  
HDR Analysis 31  
Histogram Color YCbCr Mode 20  
Histogram Luminance Mode 19  
HLG Analysis 31  
Host Name 41

## I

Info Page 26  
Initial System Startup 10  
Installation  
    Hardware 9  
Installation Summary 9

## K

Keyboard View Selection 14

## L

Licensing 11  
Log Data 25  
Logging 37  
Logs Screen  
    Web Interface 47  
LUTs 35

## M

Menu Navigation 14  
Menu Reference 50

## N

Network Configuration 10  
Network Screen  
    Web Interface 48  
Network Settings 40  
NETWORK Tab 40

## O

Open Setup 27  
Overview  
    GUI 12  
    Hardware 7  
    Product 5

## P

Password 41  
Pixel Picker 25, 34  
Pixel Picker Mode 34  
Product Overview 5

## Q

QC Tab 38  
    Setting Screen 38, 39, 40

## R

Rack Mounting 9  
Recall 29  
Remote Desktop 41  
Reset Setup 28  
Resolution 28

## S

Safe Area Tab  
    Settings Screen 42  
SAFE AREA Tab 41  
Save Screenshot 30  
Scope LUT 35  
Screenshot 29  
Screenshots Screen  
    Web Interface 46  
SDR Analysis 31  
Selecting Views 14  
Setting Screen  
    QC Tab 38, 39, 40  
Settings Screen 37  
    Safe Area Tab 42  
    Web Interface 45  
Setup Menu 27  
Setup View 27  
Shipping Box Contents 9  
Single Line Mode 34  
Skin Tone 39  
Skin Tone Line 21  
Software Features 5  
Software Update 10  
Square Division 29  
Status Screen  
    Web Interface 48

## T

Technical Support 2  
Timecode on Image 22  
Transport 29

## V

Vectorscope Aid 22, 40  
Vectorscope Mode  
    75% 21  
    100% 21  
Video Menu 28  
View 12  
View Setup 27

## W

Waveform Color Mode 17  
Waveform Lumi Color Mode 16  
Waveform Luminance Mode 16  
Waveform RGB Color Mode 17  
Waveform RGB Mode 18  
Waveform YCbCr Mode 18

Waveform YRGB Mode	19
Web Interface	
Firmware Screen	49
Logs Screen	47
Network Screen	48
Screenshots Screen	46
Settings Screen	45
Status Screen	48
Web Interface Description	43
White Point Compensation	33

## Y

YCbCr Matrix	32
--------------	----