

# T-TAP Pro

## Thunderbolt 3 to 12G-SDI/HDMI



## Installation and Operation Guide

# Notices

---

## Trademarks

---

AJA® and Because it matters.® are registered trademarks of AJA Video Systems, Inc. for use with most AJA products. AJA™ is a trademark of AJA Video Systems, Inc. for use with recorder, router, software and camera products. Because it matters.™ is a trademark of AJA Video Systems, Inc. for use with camera products.

Corvid Ultra®, Io®, Ki Pro®, KONA®, KUMO®, ROI® and T-Tap® are registered trademarks of AJA Video Systems, Inc.

AJA Control Room™, KiStor™, Science of the Beautiful™, TruScale™, V2Analog™ and V2Digital™ are trademarks of AJA Video Systems, Inc.

All other trademarks are the property of their respective owners.

## Copyright

---

Copyright © 2026 AJA Video Systems, Inc. All rights reserved. All information in this manual is subject to change without notice. No part of the document may be reproduced or transmitted in any form, or by any means, electronic or mechanical, including photocopying or recording, without the express written permission of AJA Video Systems, Inc.

## Contacting AJA Technical Support or Sales

---

Please have all pertinent information at hand prior to contacting AJA support or sales.

Support Telephone: +1-530-271-3190

Support Website: <https://www.aja.com/support/contact>

Support Email: [support@aja.com](mailto:support@aja.com)

Sales Email: [sales@aja.com](mailto:sales@aja.com)

Shipping Address: AJA Video Systems  
180 Litton Drive  
Grass Valley, CA 95945, USA

# Contents

---

Notices . . . . .	2
Trademarks . . . . .	2
Copyright . . . . .	2
Contacting AJA Technical Support or Sales . . . . .	2
<b>Chapter 1 – Introduction . . . . .</b>	<b>5</b>
Overview . . . . .	5
Features . . . . .	5
Video Signal Formats . . . . .	5
AJA Software & Utilities . . . . .	6
System Requirements . . . . .	7
Cable Connections, Controls, and Indicators . . . . .	7
Audio Output Connector . . . . .	7
Audio Level Meter . . . . .	7
Audio Gain Control Knob . . . . .	8
Power Connection Status LED . . . . .	8
Thunderbolt 3 Port . . . . .	9
SDI Output . . . . .	9
HDMI Output . . . . .	9
Power Status LED . . . . .	9
Bitfile Status LED . . . . .	9
Power Connector . . . . .	10
<b>Chapter 2 – Installation . . . . .</b>	<b>11</b>
Unpacking T-TAP Pro . . . . .	11
Installation Procedure . . . . .	11
Power Requirements . . . . .	12
Heat Dissipation . . . . .	12
Installing Software . . . . .	12
macOS Installations . . . . .	12
Updating T-TAP Pro Firmware . . . . .	13
<b>Chapter 3 – T-TAP Pro Operation . . . . .</b>	<b>14</b>
AJA Control Panel Overview . . . . .	14
AJA Control Panel User Interface . . . . .	14
Controlling Application . . . . .	15
Presets . . . . .	16
Default Preferences . . . . .	17
T-TAP Pro Audio Monitoring . . . . .	18
Control Panel Configuration Screen links . . . . .	19
Control Screen . . . . .	20
Format Screen . . . . .	21
SDI Output Screen . . . . .	22
HDMI Screen . . . . .	23
HDR Screen . . . . .	24
Video Setup Screen . . . . .	26
Audio Setup Screen . . . . .	27
Audio Mixer Screen . . . . .	27
LUT Screen . . . . .	30
Presets Screen . . . . .	33
Firmware Screen . . . . .	34
Info Screen . . . . .	35
<b>Appendix A – Specifications . . . . .</b>	<b>36</b>
T-TAP Pro Pro Tech Specs . . . . .	36
<b>Appendix B – Safety and Compliance . . . . .</b>	<b>38</b>
<b>3 Year Warranty and Liability Information . . . . .</b>	<b>45</b>

AJA Software License Agreement . . . . .46  
Index. . . . .49

# Chapter 1 – Introduction

---



## Overview

---

T-TAP Pro is a compact, silent device that delivers next generation mobile monitoring capabilities to any supported Thunderbolt 3 enabled system. Tapping the flexibility and bandwidth of the widely available Thunderbolt 3 port, common on modern Apple and PC host systems, T-TAP Pro features 12G-SDI and HDMI 2.0 connectivity for working with up to 4K or UltraHD 60p video over a single cable. This allows for easy output of deep color, high frame rate, SDR and HDR video to a wide range of professional/consumer monitors and devices, at the highest 10-bit and 12-bit quality.

Audio support is extensive, with up to 16 channels of SDI embedded audio and 8 channels on HDMI. The integrated headphone jack provides easy monitoring of any two audio tracks, and the front panel VU meters give you a quick visual guide of your audio levels.

Because T-TAP Pro's internal 12G signal processing requires more power than the Thunderbolt bus can provide, an external power supply is required and provided.

Like all AJA Desktop products, T-TAP Pro is compatible with a huge range of creative applications for editorial, audio production, graphics, and much more. All of this is powered by AJA's highly respected Desktop software, with field proven drivers and application plug-ins.

## Features

---

- One Thunderbolt 3 port
- One 12G SDI output
- One HDMI v2.0 output
- 16-Channel SDI embedded audio output
- 8-Channel HDMI embedded audio output
- One stereo audio output 1/8" TRS
- Front panel audio meters
- Front panel volume knob, able to control either audio monitoring or embedded audio output levels
- External power supply provided

## Video Signal Formats

---

The Video Signal Formats supported by T-TAP Pro are listed in (["Appendix A Specifications" on page 36](#)).

## AJA Software & Utilities

---

AJA's T-TAP Pro software and hardware were developed for powerful integrated video/audio monitoring, editing, and production with a variety of third party software. With T-TAP Pro and a qualified computer, you have the ultimate system for standard and high definition production, post-production, broadcast, and streaming work. AJA software is distributed as a unified package which includes all the software, firmware, plugins, and utility programs for AJA's Io, KONA, and T-TAP Pro products.

Four retail packages are available, one for macOS, one for Windows, and two for Linux (Ubuntu and Rocky).

### Mac, Windows, and Linux Packages

---

These packages include:

#### Firmware

---

Firmware refers to low level code that defines the capabilities of the hardware. It is important to always update to the firmware recommended following install of new, or older versions of software.

#### Drivers

---

AJA device drivers for the host system OS provide tightly integrated hardware/software operation.

#### AJA Control Panel

---

The Control Panel provides:

- Source selection and control of your AJA hardware.

*NOTE: For T-TAP Pro, AJA Control Panel functions are centered around output settings.*

- A block diagram to show visually what routing and processing is being performed.

#### AJA Control Room

---

Control Room is a cross-platform software application for ingest, playback and output with AJA products.

*NOTE: For T-TAP Pro, capture is not supported via AJA Control Room.*

#### AJA System Test

---

AJA System Test provides accurate and detailed evaluations of drive and system performance statistics, allowing you to measure the capabilities of your system for recording and playing back various resolutions and codecs. The application includes:

- System Disk Test
- AJA Device Test
- System Report

The application tests Read and Write, Capture and Playback speeds in both Megabytes per second and Frames per second. The disk speed tests differ from standard disk I/O performance applications in that they specifically test the system under conditions typically encountered with video capture, playback, and editing.

*NOTE: Theoretically the best test (or simulation) is to fill your storage disk to 80% and then test capture at the highest data rate you will use.*

*NOTE: For the most accurate System Disk Test results for 4K or UltraHD resolution, set the Test File Size to 16Gb.*

### Third Party Plug-ins

Plug-ins for popular third party Professional Video Applications from Adobe, Avid, Apple, OBS, and Telestream.

## System Requirements

*NOTE: On macOS, the T-TAP Pro supports Apple silicon processors as well as earlier Intel processors.*

AJA Video recommends that your system meet minimum hardware and software requirements to achieve a satisfactory level of performance. Updates to system requirements are subject to change.

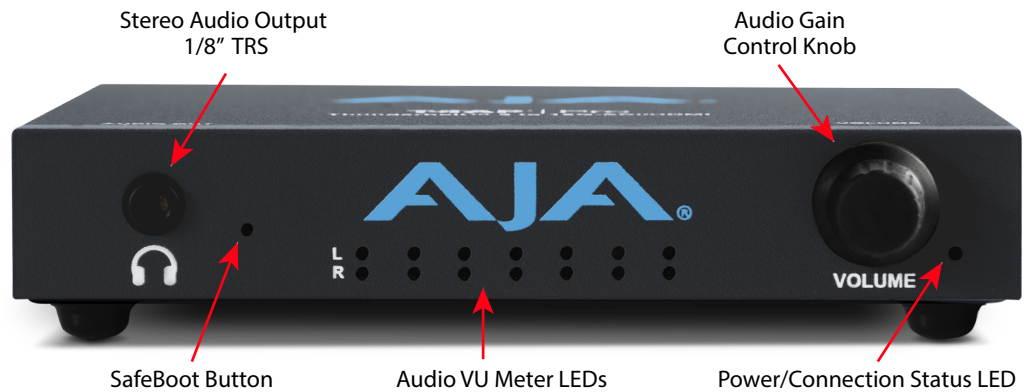
See the Release Notes for your AJA Card or Device, available on the AJA website and also installed with the software package, for minimum and recommended system requirements including OS, CPU, RAM, and GPU.

*NOTE: Also see Software Vendor system requirements for GPU recommendations and additional hardware requirements and recommendations.*

*NOTE: For large scale installations with shared storage, IP, or for very high performance requirements, AJA recommends consultation with an experienced system integrator. A consultant will be able to assist with many important variables.*

## Cable Connections, Controls, and Indicators

Figure 1. T-TAP Pro Front View



### Audio Output Connector

A 1/8 inch TRS connector is available for monitoring two channels of audio, selectable in channel pairs using the Control Panel application. Typically used with a pair of headphones.

### Audio Level Meter

The Audio Level Meter in the center of the front panel indicates the sum of whatever sources are being played out to the HDMI and SDI embedded audio video output; i.e. NLE timeline and mix of host system audio output (if applicable).

The meter's LEDs are colored to indicate the amount below 0dBfs when averaged over a one millisecond time interval.

dBfs	LED Color and Location
-2 db	Red LED 1 (top)
-12 db	Yellow LED 2
-20 db	Yellow LED 1
-30 db	Green LED 4
-40 db	Green LED 3
-50 db	Green LED 2
-60 db	Green LED 1 (bottom)

*NOTE: These audio level meters are for guidance only. Third-party audio metering should be employed when doing critical audio editing and mixing.*

## Audio Gain Control Knob

---

The front panel control knob can be assigned one of two different functions, via the AJA Control Panel application. The control knob spins freely, without (hardware) max/min limits; this is often referred to as a "rotary encoder" controls. Turn the knob clockwise to increase volume, or counter-clockwise to decrease volume.

- The control knob's default function is to simply adjust the audio level being sent to the T-TAP Pro's front panel audio output connector (headphone jack). The embedded audio being output by T-TAP Pro is always indicated on its front panel VU meters, which in this situation will not be changed by your knob adjustment.
- Alternatively, the control knob can be assigned to adjust the level of the embedded audio being sent out the T-TAP Pro's rear SDI and HDMI connectors. In this situation the front panel VU meters will report your level changes. An example of using this feature would be to trim the level of the embedded audio output because it was increased after mixing in a computer originated audio source.

*NOTE: Since the headphone output is derived from the master level, adjusting the embedded audio levels will also affect the levels driven to the front panel analog audio output.*

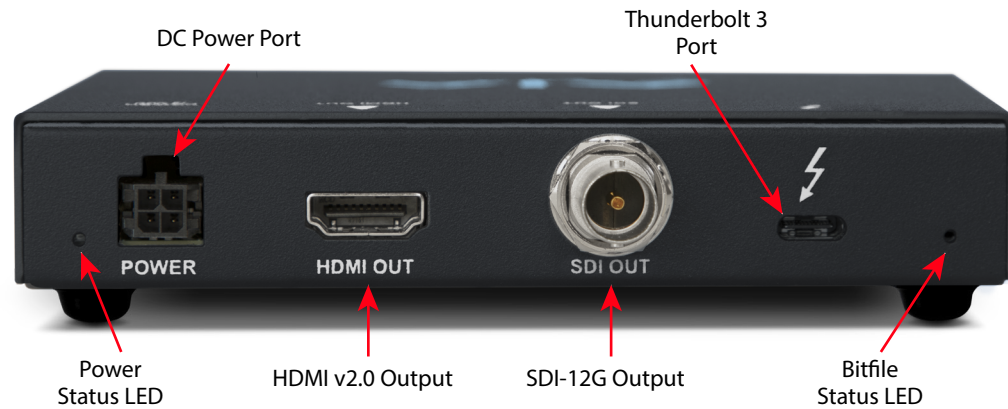
## Power Connection Status LED

---

This LED indicates the current connection status of your T-TAP Pro.

- OFF: No power detected
- AMBER SOLID: Power is on but Thunderbolt is not live (e.g. Thunderbolt ports disabled in host, BIOS settings)
- AMBER BLINKING: Thunderbolt is awake but no PCIe connection to host (e.g. device hasn't been whitelisted by the Thunderbolt software running on host)
- GREEN BLINKING: Thunderbolt is awake, PCIe is connected, but device doesn't see the NTV2 Driver (This shows up on Windows where the AJA driver has been restricted from talking to peripherals – security setting error, or because the AJA software is not installed on the host)
- GREEN SOLID: Thunderbolt is communicating properly.

Figure 2. T-TAP Pro Rear View



## Thunderbolt 3 Port

The high speed of Thunderbolt allows connection to peripheral devices while achieving PCI Express performance.

**NOTE:** T-TAP Pro cannot be powered through its Thunderbolt port (insufficient power).

AJA's T-TAP Pro is designed to utilize the full bandwidth provided by Thunderbolt 3. Use a certified, high-quality Thunderbolt 3 cable to connect your AJA device to the host computer. The cable should have a Thunderbolt logo and the number 3 on it. Passive cables can be up to 1.6 feet (0.5m) maximum length. Active cables up to 6.5 feet (2m) can also be used.

If you choose to attach T-TAP Pro to a Thunderbolt 2 host machine, there are adapters available on the market, with perhaps Apple's being the most commonly used. That said, you may find situations where the lack of a Thunderbolt 3 host system will limit what workflows you are able to support with T-TAP Pro.

## SDI Output

A BNC connector is provided on T-TAP Pro for one 12G-SDI output. This output also supports up to 16 channels of embedded 24-bit digital audio.

## HDMI Output

An HDMI v2.0 connector on the T-TAP Pro provides output of HDMI compatible video and up to 8-channels of embedded audio. If you have a source with 16 audio channels, you can select to output channels 1-8 or 9-16 via HDMI.

HDCP is not supported on the output. The HDMI output supports standard HDMI cables only.

## Power Status LED

- OFF: No power detected
- GREEN: The unit is receiving power

## Bitfile Status LED

This indicates whether T-TAP Pro is running the main bitfile, or the safeboot failsafe recovery bitfile.

- GREEN: FPGA is loaded and running the main bitfile (normal operation)
- RED: FPGA loaded and running failsafe bitfile

## Power Connector

---

Power to the T-TAP Pro is provided by an external power supply module (provided) that accepts a 110-240VAC, 50/60Hz power input and supplies +12 VDC.

*IMPORTANT: The T-TAP Pro power connector has a latch, similar to an Ethernet connector. Depress the latch (facing the top of the device) before disconnecting the power cable from the unit.*

# Chapter 2 – Installation

## Unpacking T-TAP Pro

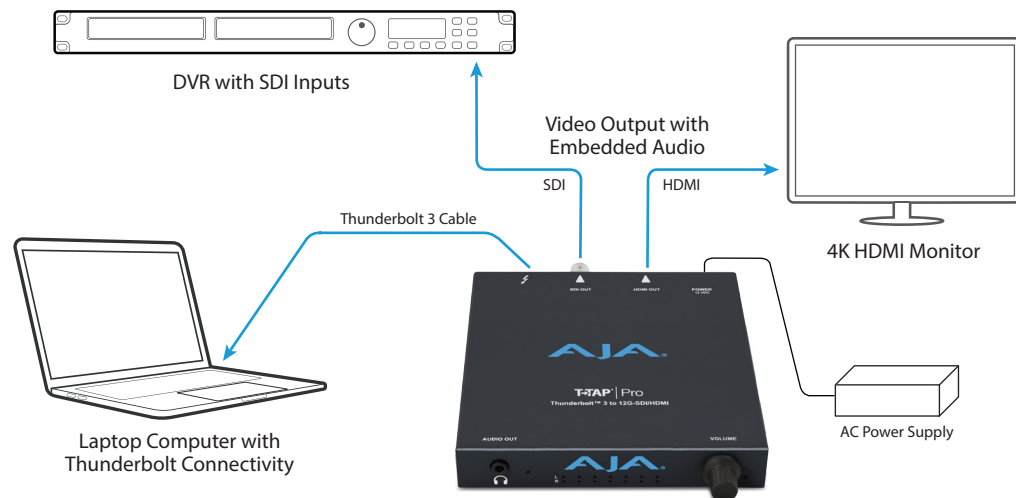
As you unpack T-TAP Pro, carefully examine the unit to ensure that nothing was damaged during shipment. If you find any damage, immediately notify the shipping service and supply them with a complete description of the damage. AJA will repair or replace damaged units. If you find shipping damage, contact your AJA dealer or distributor for details on how to have your T-TAP Pro repaired or replaced. Save packing materials and the shipping box. If you ever require service or move your system, use the packaging materials and box for safe shipment.

## Installation Procedure

1. Unpack the T-TAP Pro shipping box (see above).
2. Ensure that your editing or streaming application software has been installed on your computer.
3. Install the latest AJA T-TAP Pro software on your computer.
4. Connect your T-TAP Pro to its power supply unit, and connect the power cord to mains AC, using the provided cables.

*NOTE: T-TAP Pro cannot be powered by its Thunderbolt connection (insufficient bus power).*

Figure 3. Typical T-TAP Pro Laptop System Connections



5. Connect your T-TAP Pro's Thunderbolt 3 port to your computer via a Thunderbolt 3 cable (not included). Thunderbolt 2 to 3 adaptors can be used, with reduced throughput.
6. Connect T-TAP Pro's SDI and/or HDMI outputs to your downstream equipment, as required for your workflow.
7. If desired, connect a pair of headphones or other audio monitoring device to the T-TAP Pro's front panel Audio Out connector.
8. Power cycle your computer while your T-TAP Pro remains powered up with its Thunderbolt cable connected to your computer.

9. Launch the AJA Control Panel application. It should recognize the connected T-TAP Pro and it should be fully functional as long as it is properly cabled and powered.

**NOTE:** *If after installation the T-TAP Pro's right front panel LED is blinking green, you can try disconnecting and reconnecting the Thunderbolt cable, or with the Thunderbolt cable connected power cycle your computer.*

## Power Requirements

---

- Input Voltage: 110-240VAC, 50/60Hz
- Power supply and cables provided.

## Heat Dissipation

---

To provide silent operation, T-TAP Pro uses its metal case to pass internal heat to the outside air. The case will get hot to the touch, but not in excess of UL spec (140 F). The rubber feet on the bottom are designed for increased air flow.

**CAUTION:** *T-TAP Pro should not be stacked with other equipment, be covered or installed in a way that inhibits air flow, or be exposed to additional heat.*

## Installing Software

---

If you're reading this T-Tap Pro manual without having downloaded a Desktop Software Installer package in order to open it, then go to the AJA website and download the **AJA Desktop Software v18.0 Installer**. This includes a package of all the current software for AJA's KONA, Io, and T-TAP Pro products, including the AJA Control Panel and AJA Control Room applications, as well as the AJA manuals (product user guides) for all of the products supported by this AJA Desktop Software v18 release.

System software updates may occasionally become available on our website ([www.aja.com](http://www.aja.com)). We recommend checking occasionally for both software updates and additional product information.

**NOTE:** *If your computer has previously had another video capture or multimedia device installed, ensure you uninstall any related software before installing the AJA software package. This will prevent any hardware or software conflicts.*

**IMPORTANT:** *Before installing the AJA software installer package, ensure that your editing application is installed as detailed in its user documentation. You cannot use T-TAP Pro with a third-party application until the application has been installed and run at least once on your workstation. Next, install the AJA software installation package.*

## macOS Installations

---

The products covered in this manual are compatible with Apple systems running macOS versions spanning several generations.

Note that different macOS versions will present specific permissions dialogs during the installation process depending on the version and the specific model of device the AJA Desktop drivers and tools are being installed onto.

**IMPORTANT:** *As of Desktop Software Installer v18.0, before you run the Installer, and regardless of previous software installations, all users must first run the UnInstaller that is provided in the v18.0 Desktop Software Installer zip. Failure to do so will result in the Installer aborting.*

For full information on supported devices, versions and step by step software installation procedures, please refer to the **AJA Desktop macOS Installation guide**, available at the following location:

<https://www.aja.com/support/item/10171>

Release notes for AJA Desktop Software packages will always include the latest information on compatibility with macOS versions and Apple hardware.

## Updating T-TAP Pro Firmware

---

When you update your T-TAP Pro software by downloading new versions from the AJA website, it is possible that some versions may also require a firmware update to update the software stored in non-volatile memory. Always carefully read the release notes that accompany each version to be installed. The release notes will spell out all required software and hardware necessary to ensure a successful update of your T-TAP Pro.

Follow these instructions when a firmware update is required:

1. Connect T-TAP Pro to a computer that has the AJA Software package installed.

*NOTE: Only connect one AJA device to your computer when updating firmware.*

2. Open the AJA Control Panel application, then go to the Firmware screen.
3. Select the desired firmware version and click Install.
4. After the install completes, power cycle your T-TAP Pro (for example, by unplugging and reconnecting the power supply).

# Chapter 3 – T-TAP Pro Operation

## AJA Control Panel Overview

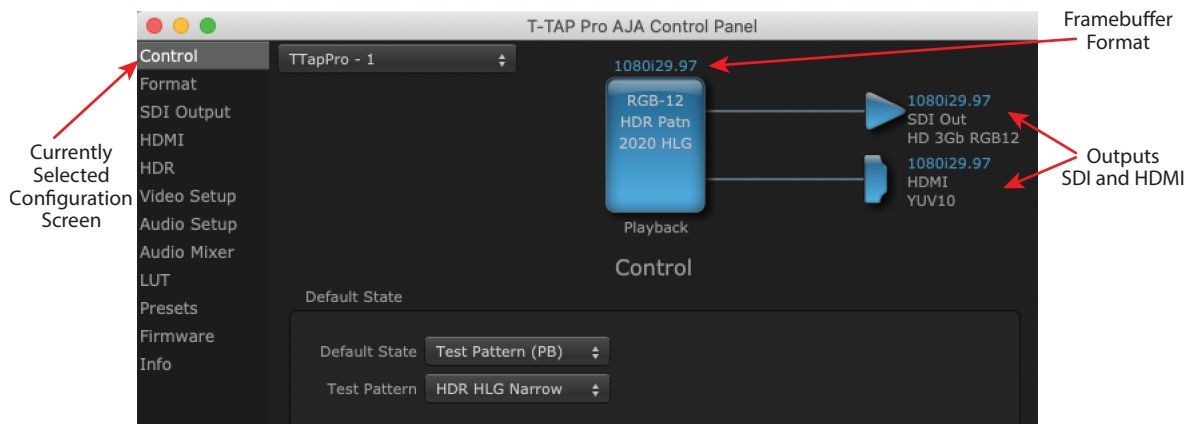
The AJA Control Panel is a software application that provides a simple visual window showing how the T-TAP Pro interface is currently configured, and that allows you to make changes. Current settings—both those you changed and those you didn’t—can be saved as a snapshot for recall at anytime. This lets you save settings associated with all your frequent tasks; then as you switch tasks you don’t have to spend extra time resetting interface configurations—just load the previously saved settings for each task.

## AJA Control Panel User Interface

The top area of the Control Panel shows a visual picture representing the processing (if any) that’s currently occurring, including outputs, and system status. Lines between the framebuffer, and outputs show a video path. Where there are no lines, it shows there is no connection; this can be because an appropriate output isn’t selected (such as PsF for HDMI).

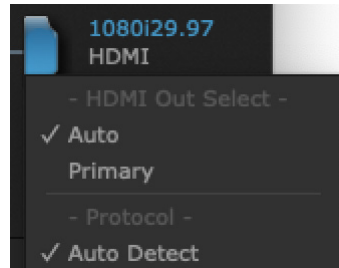
Icon objects on the block diagram screen (output icons, frame buffer, etc.—also called “widgets”—indicate their status by color (explained later) and can be clicked for context-sensitive information and choices. (These same choices can also be made from the Control Panel screens.)

Figure 4. Block Diagram Area



Right-Clicking an Icon produces a context-sensitive menu.

Figure 5. Context-Sensitive Menu



## Framebuffer

The framebuffer is the “engine” in T-TAP Pro where active video operations take place using your third party applications, or even T-TAP Pro itself. The framebuffer has a format (called the “Primary Format”) and color space that it follows, as defined in the Configuration Screens or via external application software. It is important to realize that inside the host computer, many applications can use the T-TAP Pro (as you switch from window to window) and it may not always be obvious which application currently controls it.

## Primary Format

The video format currently assigned to T-TAP Pro. This is the format that the framebuffer will use and is shown in the Control Panel using the color blue. All icons in blue are the same as the Primary Format used by the framebuffer. Also any text descriptions in the block diagram that appear in blue also indicate that something is in the primary format.

## Output Icons

The output icons are triangles that together with their color show the outputs and their status (selected, not selected, signal present or not, format, etc.). A complete video path is shown when outputs are connected with lines going from the framebuffer.

*Figure 6. Output Icon Example*



**NOTE:** *Hovering your cursor over an Output icon opens a tooltip that reports that connector's signal status.*

## Color Meanings

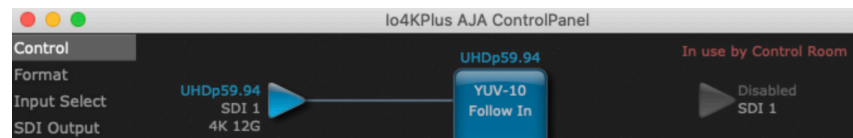
All items in the T-TAP Pro Control Panel block diagram are color-coded to show what is happening in realtime. This applies to both icons and text. These colors have the following corresponding meanings:

- Blue: video is same format as the Primary Format (framebuffer)
- Red: the selected operation cannot be performed

## Controlling Application

It is important to understand that the computer can contain many applications that can use the AJA device (as you switch from window to window) and it may not always be obvious which currently controls it.

*Figure 7. Control Panel In Use Message (in red)*



In the top right corner, the Control Panel displays the name of the application controlling the unit. In some cases, applications may not always properly “let go” of the I/O interface as another takes over—you’ll be able to tell by looking at the Control Panel.

## Controlling Application Format Selection

---

If a running controlling application uses T-TAP Pro for capture or output, it controls the Device Format via its own menus and settings. For example, when the Third-party editing application is active (it's the front-most application) and has T-TAP Pro as its "A/V Device", the T-TAP Pro's Device Format is determined by the application's "Video Playback" settings. These format selections are reported in the AJA Control Panel block diagram.

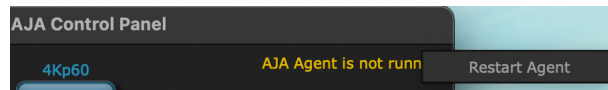
Controlling applications can start and stop and change modes—even while they are running. And the behavior of different controlling applications can vary: some applications take control of the interface as soon as they are launched and don't give it up until they quit, while other applications take control of the interface only when they are the "front-most" running application and then relinquish control when they're not. Even these controlling applications may not relinquish control until capture or output operations are completed.

## AJA Control Panel Restart Services

---

AJA Control Panel Restart Services allows for restarting the AJA services if necessary. This can help if various applications begin contesting for access to the Video I/O device. In this situation an **AJA Agent is not running** message can appear as the controlling application status. Hovering your cursor over that message displays a **Restart Agent** button, which clicking on will bring Control Panel back to its startup state. Then an application can freshly acquire control of the I/O device. Currently this feature is only available for macOS installations.

*Figure 8. Restart Services Popup Message*



## Control Recommendations

---

We recommend you have the Control Panel running and visible at all times. When the Control Panel is running in the background (not front-most) you can see what the interface is doing and who has control of it.

## Presets

---

Setups can be named and saved as a snapshot (Preset) for recall at any time. You can save various AJA device Control Panel configurations associated with your frequent tasks. You don't have to spend time resetting interface configurations, just load the previously saved Preset for each task. See ["Saving, Loading and Deleting Presets" on page 33](#) for more information.

If you work on multiple systems and want to carry your saved setups to another location, you can copy your saved Preset files on to movable storage and load them into any computer running the AJA Control Panel application.

### Mac OS Preset Files Storage Location

---

- From the Finder, hold down the Option key (to display the Library directory) and click on Go/Library/Application Support/AJA/<device name>/Presets/

### Windows Preset Files Storage Location

---

- c:\Users\<username>\AppData\Local\AJA\Control Panel\<device name> Presets\

## Default Preferences

---

When an AJA device starts up, a preference can determine what settings it will have it when it begins to operate. The AJA Control Panel offers two default preference settings:

- Local Preference - A preference stored from the last AJA device's Control Panel settings to be used on next startup of AJA Control Panel. This occurs on next restoration of the default state (triggered by start up of host CPU, startup of the AJA device, or when a third-party application releases the AJA device).
- Global Preference - A preference saved for use as a global default start state for an AJA device that can be shared by multiple users, applied on first startup, or by pressing the Control Panel **Reset Device...** button.

### Local Preference

---

The Local Preference file (com.aja.devicesettings) exists to immediately and automatically store all parameter changes made by a user on a particular AJA device. When any control is changed in the Control Panel, that change is recorded in the Local Preference file stored in a unique location on that computer that is dedicated to that particular device, serial number, and logged-in user. Then, when AJA Control Panel is restarted for any reason, the AJA device being controlled restores the settings being used when Control Panel was last closed.

The Local Preference file can be accessed at the following locations.

On Mac:

- From the Finder, hold down the Option key (to display the Library directory) and click on Go/Library/Preferences/com.aja.devicesettings.

On Windows:

- C:\Users\<USER\_NAME>\AppData\Local\aja\com.aja.devicesettings

*NOTE: Clicking on the AJA Control Panel "Erase All Prefs" button deletes the existing Local Preference file from this location. This file will be recreated as soon as any Control Panel setting is changed.*

*NOTE: Clicking on the AJA Control Panel "Reset Device..." button will delete the existing Local Preference file. If a Global Preference file is found, these settings are reloaded. If a Global Preference file is not found, "factory defaults" are loaded and the device is set to that state.*

### Global Preference

---

An administrator can establish a house standard for an AJA device by copying a preference file to a shared computer location. Once placed at that location, it becomes a Global Preference file where it will establish a standard default startup state for all users of that AJA device using that computer system. These settings preempt the initial AJA factory default settings, and are applied when an AJA device is first powered up, or when the Control Panel **Reset Device** button is pressed.

To establish a Global Preference, the administrator first configures the AJA device (which automatically creates a "com.aja.devicesettings" Local Preference file in the location identified above) and then copy or move or that file to the correct computer locations (manually or by pushing it out across the network) on all the computers that use the AJA device.

*NOTE: If the user makes changes to an AJA Device's Control Panel settings, those changes are saved to the Local Preference file, which will take priority over the Global Preference file.*

The shared computer locations for a Global Preference file are:

On Mac:

- From the Finder, click on Go/Computer/<System HD>/Users/Shared/AJA/ and copy or move the "com.aja.devicesettings file" described above to this location.

*NOTE: The "AJA" folder needs to be created manually at this location before moving the preference file into it.*

On Windows there are three possible shared locations depending on your system:

- C:\Users\Public\Aja\
- C:\Users\All Users\Aja\
- C:\ProgramData\Aja

Copy or move the "com.aja.devicesettings file" described above to one of these locations.

*NOTE: The AJA Control Panel Info screen displays the path to the Global Preference file on that computer.*

*NOTE: Clicking on the AJA Control Panel Erase All Prefs button does NOT delete an existing Global Preference file from this location.*

## T-TAP Pro Audio Monitoring

---

T-TAP Pro can be used as your single audio monitoring solution whether you are auditioning music in a web browser, playing a movie file on the desktop, creating music, or playing a YouTube clip. As long as the output of your work or application is normally output via the host system audio, your T-TAP Pro can route this audio for monitoring. This cuts down on unnecessary cabling, and means you can take advantage of a consistent audio monitoring environment whatever you are currently doing with your host system.

*NOTE: On first use, you will need to tell your operating system to use AJA hardware as the default output hardware.*

T-TAP Pro lets you listen to Host System audio concurrently with your NLE audio. This is useful if you need to audition music tracks against playback of your NLE timeline, or if you need to Zoom with a remote producer during an edit session, or for a myriad of other reasons.

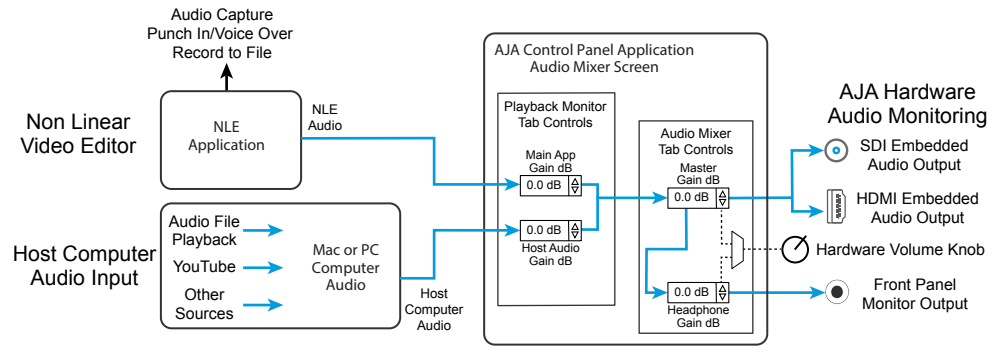
T-TAP Pro audio monitoring is routed and mixed using the Control Panel application's Audio Mixer screen. You can select sources, and can adjust their monitoring levels.

The mixed audio monitor signal is also routed to:

- SDI Embedded Audio out
- HDMI Embedded Audio Out

*IMPORTANT: Even though you can hear changes in the signals and levels adjusted with the Audio Mixer screen, these changes are NOT recorded to disk during NLE Capture or Audio Punch In / Voice Over to Timeline. The Audio Mixer screen is dedicated for monitoring only, not program mixing.*

Figure 9. T-TAP Pro Audio Monitoring Routing Diagram



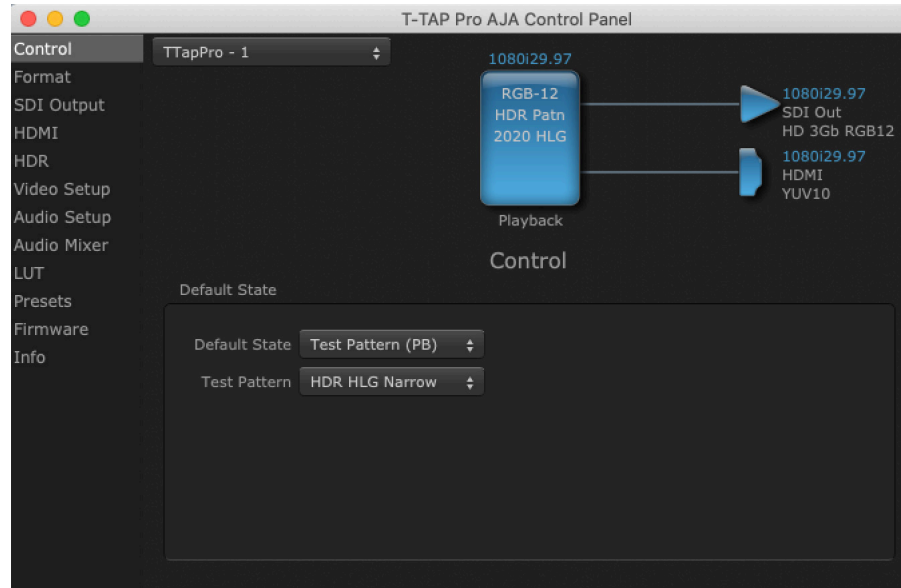
## Control Panel Configuration Screen links

The left side area of the T-TAP Pro Control Panel provides navigation links to the various Screens categorized by topics. Clicking on a topic—or alternatively, a block diagram element—displays an information screen corresponding to that topic. Screens that can be selected are:

- Control - Configures T-TAP Pro operation and output timing.
- Format - Select the framebuffer primary video format of outputs.
- SDI Output - Select SDI output format.
- HDMI - Configure the HDMI Output.
- HDR - Configure High Dynamic Range settings.
- Video Setup - Configure Video such as progressive format, colorspace, and gamma.
- Audio Setup - Configures Audio options such as audio delay.
- Audio Mixer - Select and mix audio sources for monitoring and adjust embedded audio output level.
- Presets - Add or delete saved preset configurations (handy for setting up the T-TAP Pro for commonly used workflows)
- Firmware - Enables installation of AJA device firmware.
- Info - Displays status information and firmware version # of the T-TAP Pro and how it is installed in the host computer. This information is generally intended for troubleshooting/support.

*NOTE: You can use the Up/Down arrows on your keyboard to navigate link selections.*

# Control Screen



The T-TAP Pro can be controlled by various software applications running on a host computer. The Control Screen is where you select how the T-TAP Pro directs video and is used by application software. At the right-top of the block diagram it will show the current Default Output and the application currently controlling the T-TAP Pro.

## Default State

This is where you select what T-TAP Pro will output as a default when no application has control of the board, such as when the Finder is active. Since T-TAP Pro can be controlled by multiple software applications and its own control panel, the output can change dynamically. When you select many video applications, they will grab control of the T-TAP Pro outputs. These settings determine what happens when an application that doesn't grab the T-TAP Pro outputs is active.

### Test Pattern

With Test Pattern selected above, you can choose the pattern type. Select from:

- Black, Color bars (75% or 100%), Ramp, Multiburst, Line Sweep, Multi Pattern, or Flat Field, Check Field, White, Border, Linear Ramp, Slant Ramp, Zone Plate, Color Quadrant, Color Quad Border, or 2SI Alignment (see below).

**2SI Alignment** - This test pattern consists of 1-pixel diagonal crosshairs plus a 3-pixel rectangle. If there is a misalignment, the diagonal crosshairs will not be a continuous line. If it is a top-bottom misalignment, the top and bottom of the square line will be broken, with white between them. If it is a left-right misalignment, the left and right lines of the square will be fuzzy or broken. This can easily be simulated by clicking the "Quad Swap" buttons in the control panel "Video Setup" tab.

For HD and UltraHD with RGB-12 Pixel Formats the following HDR test patterns are available:

- HDR Zone Plate, HDR Linear Ramp, HDR HLG Narrow, HDR PQ Narrow, or HDR PQ Wide.

## Graphic File Display

In addition to the test patterns above, a “Load File...” selection at the bottom of the Test Pattern dropdown menu allows you to load a standard RGB/RGBA graphics file (.tif,.psd, etc.) into the frame buffer for display (including alpha channel). Some graphics formats and bit depths may not be supported. Files that have been loaded are listed for quick reuse. Loaded graphic files are retained for redisplay if another test pattern is selected, and even if T-TAP Pro is power cycled.

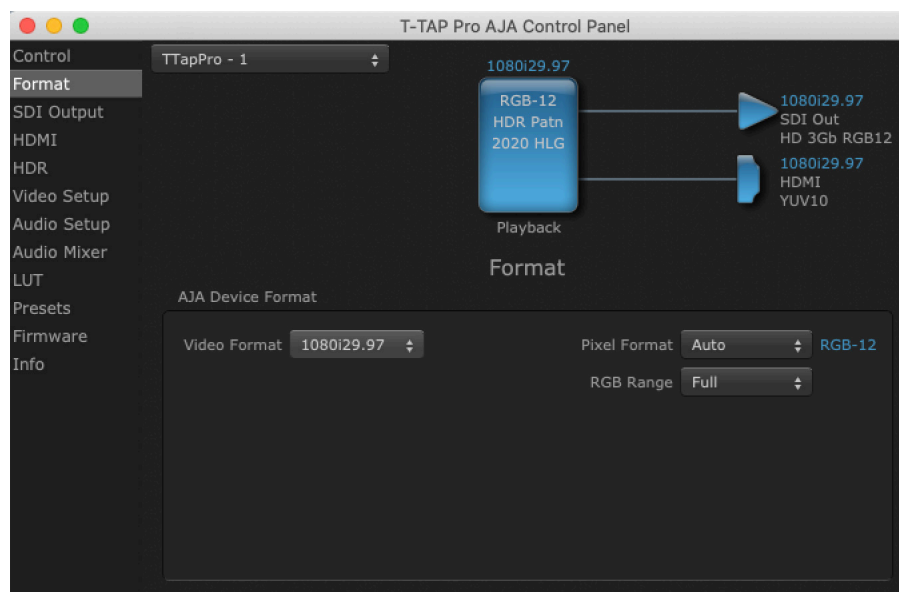
*NOTE: A loaded graphics file will not be scaled to fit. If it's smaller than the current frame buffer format,T-TAP Pro will center it in the frame. If larger than the current frame buffer format it will be cropped.*

- Clear Files - This selection on the drop-down clears all the Graphic Display files.

## Hold Last App

Directs T-TAP Pro to hold and output the last frame of video from the last application to control T-TAP Pro. This can be helpful when operating in an environment where you're switching back and forth between multiple application windows.

# Format Screen



The Format screen shows the video format currently in use by the T-TAP Pro framebuffer (called the Primary Format) and allows you to change it. Throughout the Control Panel, choices are always presented based on what T-TAP Pro can do with the signals available and the outputs selected.

## Video Format (Primary)

These dropdown menus show the currently selected formats. If you select an alternate value in the Primary Format using the dropdown, it will change the format used by T-TAP Pro's framebuffer. When a change is made via the Video Format dropdown or by clicking an icon (widget) and selecting a new format via a contextual menu, the block diagram will change to reflect the new format.

## Pixel Format

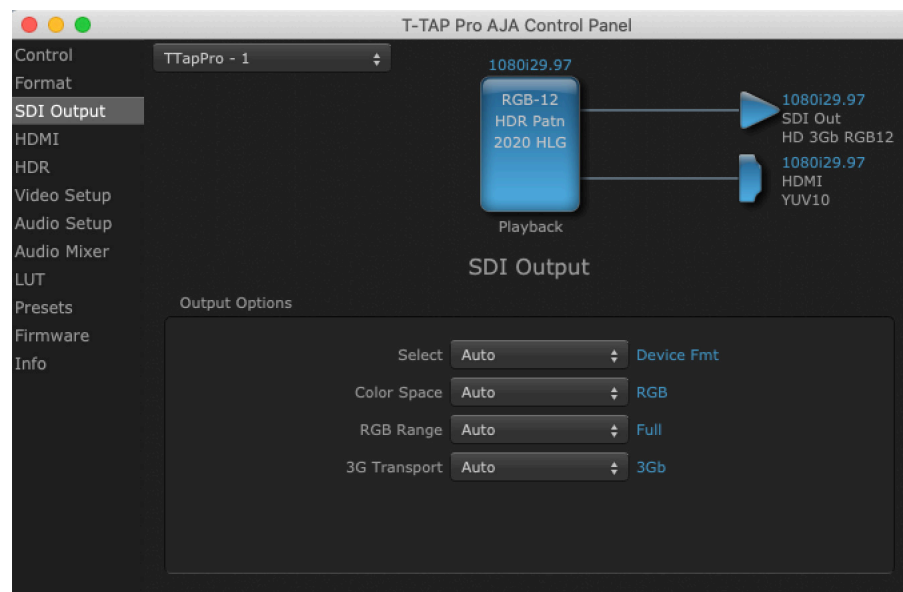
Use this drop-down menu to choose from: YUV-10, YUV-8, ARGB-8, RGB-10, and RGB-12.

## RGB Range

The RGB Range drop-down menu allows you to select either Full range (0-1023) or SMPTE range (typically 64-940) for RGB color output.

*NOTE: The AJA Control Panel software uses the abbreviation "sf" instead of "PsF" when referring to "progressive segmented frame" formats. In the manual and in other literature you may see either of these acronyms used interchangeably. Visually it is easier to discern at a glance if you are working with progressively segmented frame formats (sf in the AJA Control Panel) as compared to progressive frame formats which will show only "p."*

# SDI Output Screen



The SDI Out screen shows the current settings for the SDI output.

## Output Options

### Select

- Auto - Automatically selects the output format, based on the input or selected format.
- Device Format - Selects the framebuffer format for output.

### Color Space

Sets the color space. Select from Auto, YUV, or RGB.

### RGB Range

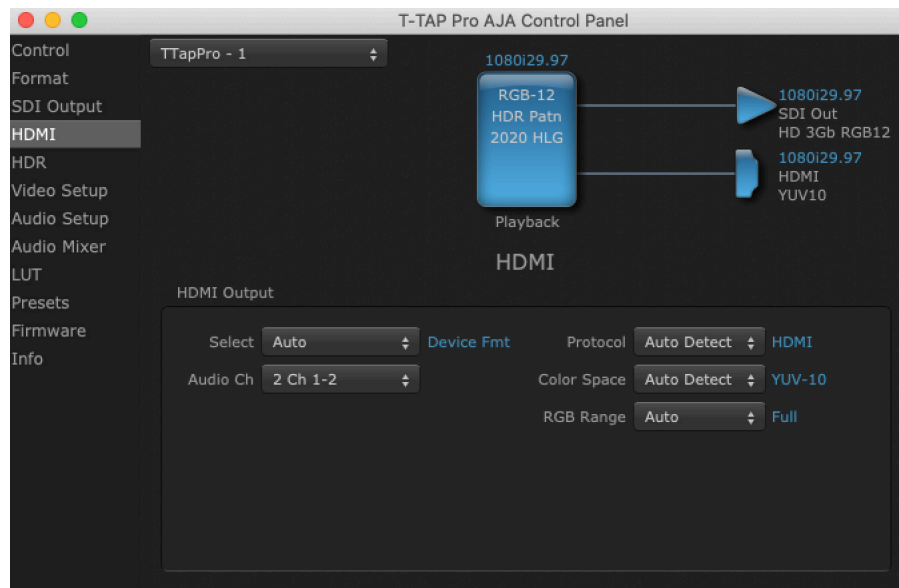
Sets the RGB range. Select from Auto, SMPTE, or Full.

## 3G Transport

Sets the output transport. Select from:

- Auto - Auto selection based on input or selected format
- 3Gb - Single link HD output using one BNC. The Level B-DS format is the dual-stream carriage of two independent HD-SDI/SMPTE 292M signals (720p up to 60 fps or 1080i/1080p up to 30 fps) in a single serial digital interface at the nominal 3 Gbit/s.
- 3Ga - Single link HD output using one BNC. The Level A format is the direct mapping of uncompressed 1080p (up to 60 fps) video into a serial digital interface at the nominal 3 Gbit/s.

## HDMI Screen



The T-TAP Pro's HDMI output is shown and configured in this screen.

### Select

- Auto - Automatically selects the output format, based on the input or selected format.
- Device Format - Selects the framebuffer format for output.

### Audio Ch

An Audio Channel drop-down allows you to select which audio channels will be embedded into T-TAP Pro's HDMI output. You can select a pair of channels, or eight audio channels.

### Protocol

The Protocol drop-down allows you to choose either "HDMI" or "DVI" protocol. Use DVI if you are outputting to a DVI monitor using an HDMI to DVI adapter.

### Color Space

Selects the HDMI output color space and depth. Select from:

- Auto Detect – (most reliable) AJA device attempt to reconfigure the HDMI output to match the current color space setting of the output monitor EDID. This option will be the most reliable in creating an output image. However, the

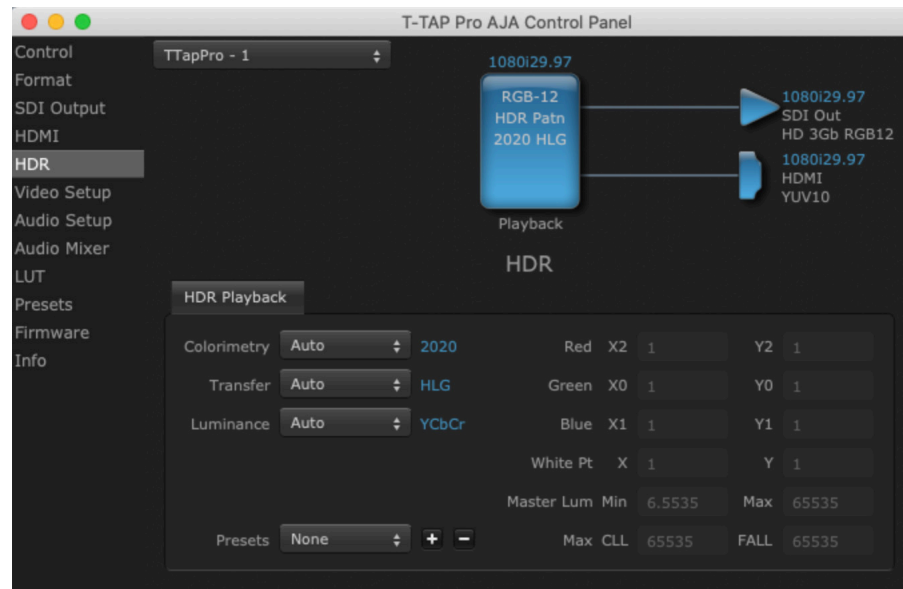
output may result in an inferior image due to color space conversion and loss of bit depth.

- Auto Set – (best quality) The AJA device will attempt to automatically set the output monitor into the best color space and bit depth that matches the user's application needs regardless of EDID of the output monitor. This may result in loss of image if the output monitor does not support a specific color space mode.
- RGBA-8 – Forces the use of RGBA-8 regardless of the attached device's EDID or user application needs.
- RGB-10 – Forces the use of RGB-10 regardless of the attached device's EDID or user application needs.
- RGB-12 – Forces the use of RGB-12 regardless of the attached device's EDID or user application needs.
- YUV-10 – Forces the use of YUV-10 regardless of the attached device's EDID or user application needs

## RGB Range

(SMPTE or Full levels) The RGB Range drop-down menu allows you to select either Full range (0-1023) or SMPTE range (typically 64-940) for RGB color output.

## HDR Screen



The HDR screen provides a sub tab setup for HDR playback simultaneously via both SDI and HDMI.

For SDI destinations, the HDR data is delivered in-band using VPID signaling for SDR/HDR Transfer Characteristics, Colorimetry and Luminance.

For HDMI destinations, side-band information is used to inform an HDMI sink device (such as a TV or monitor) that the video content is HDR. This includes generation of the Dynamic Range and Mastering Infoframe and the static metadata descriptors as defined in CTA-861.3 and HDMI v2.0a.

Included are preset primaries values for BT.2020 and DCI P3 color gamuts.

The HDR Playback tab settings affect what HDR metadata is included on the T-TAP Pro's HDMI and SDI outputs while in Playback mode.

## HDR Playback Settings

---

### Colorimetry

---

- Auto - (default)
- SDR - Standard Dynamic Range
- P3 - P3 colorspace
- 2020 - BT.2020, typically used with HDR
- Custom - Allows custom values for the Digital Primaries.

### Transfer

---

The Electrical Optical Transfer Function metadata bit tells the HDMI display which EOTF to use.

- Auto - (default)
- SDR - Standard Dynamic Range
- PQ - Perceptual Quantization
- HLG (Hybrid Log Gamma) - No metadata for Digital Primaries.

### Luminance

---

- Auto - (default)
- YCbCr - YCbCr color space
- ICtCp - IPT color space

## Digital Primaries

---

Selecting Custom HDR Mode allows the editing of digital primaries information that is passed as metadata accompanying the video signal. However, when HLG is selected as the EOTF digital primaries information cannot be edited, because HLG does not use metadata.

### Display Mastering Luminance

---

Represents the minimum and maximum Display Mastering Luminance.

- Minimum: Defines the floor of the SMPTE ST 2086 color volume (in the case of HDR) and is determined by the mastering environment.
  - Range: 0.0000 cd/m<sup>2</sup> to 1.0000 cd/m<sup>2</sup>.
  - Step size: 0.0002 cd/m<sup>2</sup>.
- Maximum: Defines the ceiling of the SMPTE ST 2086 color volume (in the case of HDR) and is determined by the mastering environment.
  - Range: 1 cd/m<sup>2</sup> to 65535 cd/m<sup>2</sup>.
  - Step size: 1 cd/m<sup>2</sup>.

### Maximum Content Light Level (CLL)

---

Represents the highest-value pixel component in an entire scene. It is determined by analyzing each frame of video, and can be determined in the post environment.

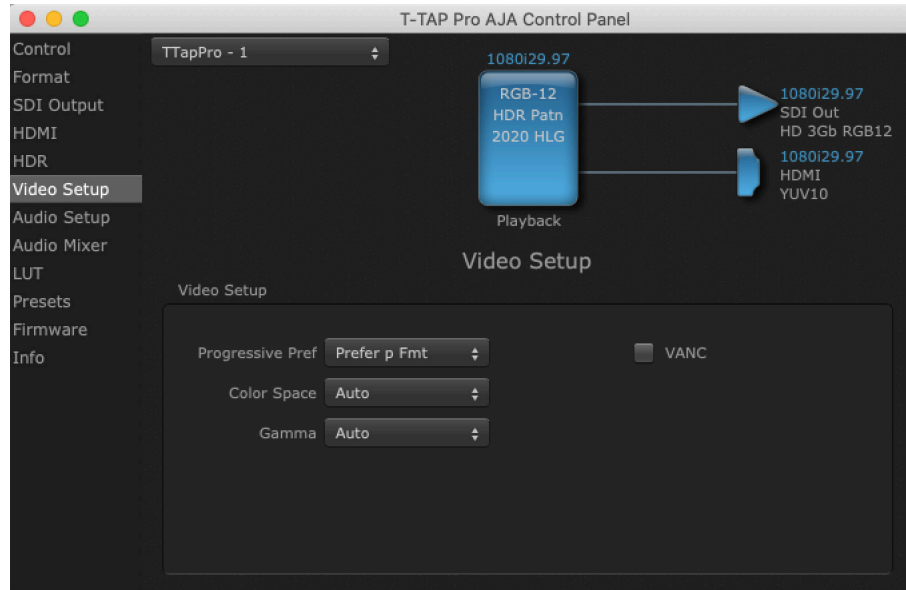
- Range: 1 cd/m<sup>2</sup> to 65535 cd/m<sup>2</sup>.
- Step size: 1 cd/m<sup>2</sup>.

## Maximum Frame Average Light Level (FALL)

Represents the maximum of frame-based average light levels taken over an entire scene, and can be determined in the post environment.

- Range: 1 cd/m<sup>2</sup> to 65535 cd/m<sup>2</sup>.
- Step size: 1 cd/m<sup>2</sup>.

## Video Setup Screen



T-TAP Pro provides a high-quality digital video output in interlaced (i), progressive (p), or progressive segmented frame (PsF) formats. This screen shows the current settings for frame formatting of the digital video output, and allows you to re-configure it when desired.

### Progressive Format

Choose between progressive (p) and progressive segmented frame (PsF) format for your digital output.

### Color Space

Sets the video color space. Select from:

- Auto
- Rec 601
- Rec 709

### Gamma

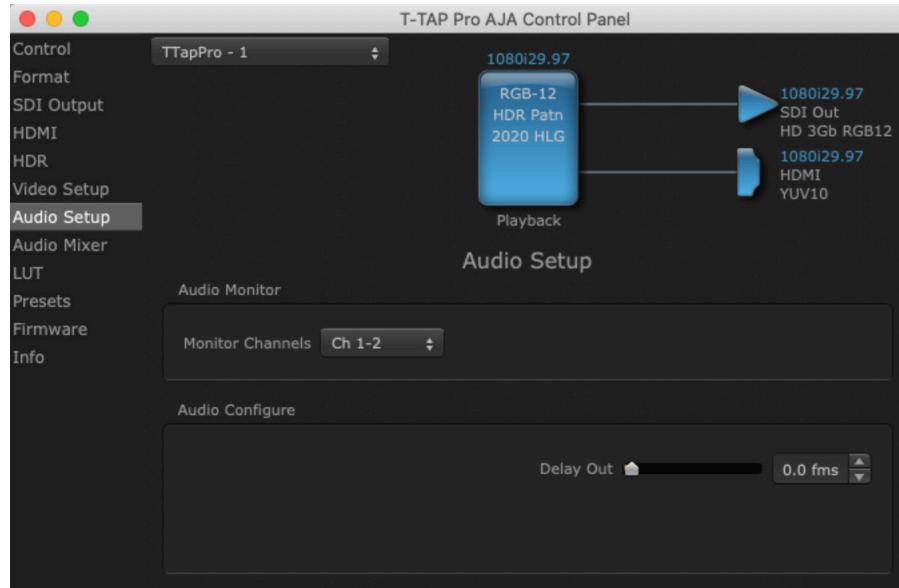
Sets the video gamma. Intended for use with legacy Apple displays. Select from:

- Auto
- Gamma 1.8

### VANC Checkbox

When checked ON, the VANC checkbox tells T-TAP Pro to capture and process any ancillary data in the SDI stream. This can include Closed Captioning data, and other types of metadata. Applications such as Premiere Pro and Final Cut Pro will not capture or output this data through the KONA, if this box is not checked on.

# Audio Setup Screen



## Audio Monitor

This control selects which pair of channels will be monitored through the audio out jack on the front of the T-TAP Pro. Select from:

- Ch 1-2 through Ch 15-16

## Delay Out

Here you can set up to 6 frames (in tenths of a frame) of delay for the AJA device's audio output. The AJA Control Panel delays all audio outputs—SDI, HDMI, and audio monitoring. This feature is useful in compensating for the processing delay of a video monitor when audio is being monitored directly from the T-TAP Pro.

*IMPORTANT: If you use this Control Panel delay, do not use other delay settings in your applications, as they can conflict with one another.*

# Audio Mixer Screen

The Audio Mixer screen has two tabs; Playback Monitor and Output Control. These tabs display what sources are available for monitoring and mixing via the T-TAP Pro's hardware.

The Playback Monitor tab lets you select audio sources available to your T-TAP Pro and mix them together. For example, you may have an audio output from your main application (e.g. NLE) and the audio from your host computer (USB Mic, Web Browser, MSTeams etc.). The Output Control tab lets you route that audio to the T-TAP Pro's SDI and HDMI embedded audio outputs, adjust that audio level, and also control the monitoring level of the T-TAP Pro's front panel Audio Out port.

The mixed audio output from the Playback Monitor tab screen is routed to the Mixer In item on the Output Control tab screen.

The selection check boxes and screen slider controls on these screens can affect the following T-TAP Pro audio outputs:

- Front Panel Audio Out (headphone jack)
- SDI Embedded Audio Out
- HDMI Embedded Audio Out

The branching arrow on the lower right of each screen indicates which sources are being routed and mixed. Arrow line segments are colored blue when active, and gray when muted.

Clicking an **On** checkbox selects the audio for that item for monitoring and/or embedded audio output. Multiple sources can be selected simultaneously.

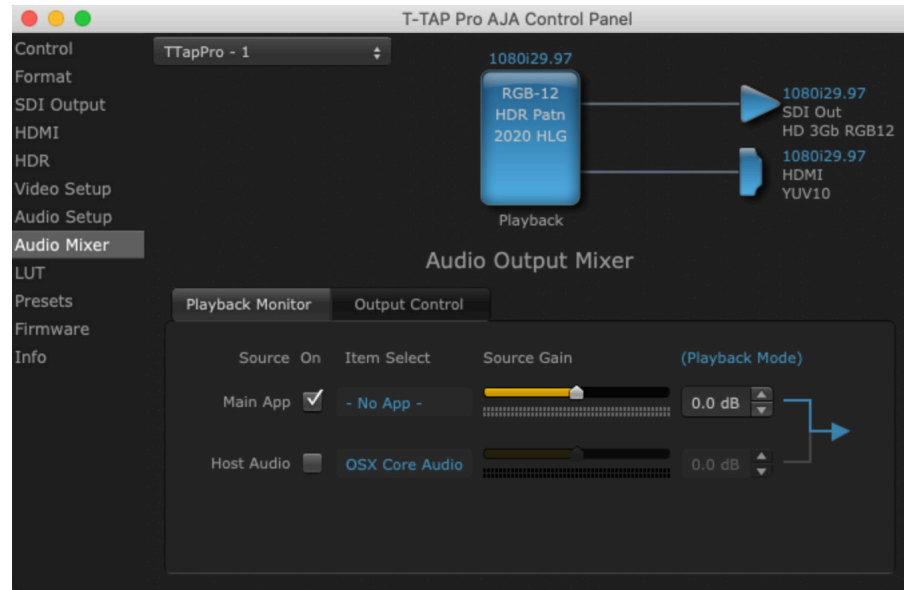
Each level slider allows a simple plus or minus adjustment for that audio level. When activated, the source gain controls can be used to adjust the monitoring output gain of that source, from +6dB to - infinity (mute). Adjustment methods include:

- Sliders - The sliders on the right can be used to change the values for each color.
- Numeric Entry - You also enter a numeric value by clicking on the displayed number, and can increase or decrease the values clicking on the up/down arrow boxes.
- Cut and Paste - Right clicking on a displayed number opens a Cut, Copy, Paste dropdown menu for convenient numeric entry.

These controls change the audio being passed to the Output Control Tab. However, the levels in these meters do not follow the adjustments made; i.e. reducing the level to zero will still show levels in the interface.

## Playback Monitor Tab

Figure 10. Audio Mixer Screen, Playback Monitor



### On Checkboxes

Clicking an **On** checkbox selects the audio for that item for monitoring and/or embedded audio output.

### Source Gain and Confidence Meters

Meters display the input audio levels of the source, and are colored green when that source is On, and gray when Off. The levels shown on this screen tab do not change when the gain is adjusted, because the input level is being monitored, not the output. This enables you to tell immediately if you have source audio arriving at the AJA hardware (without having to launch any other software).

## Main App

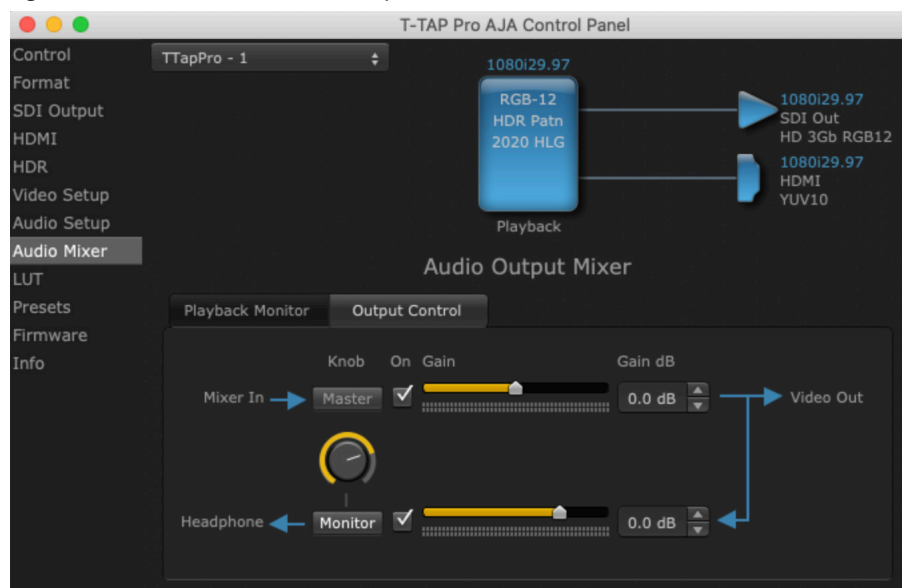
If an external application is controlling the T-TAP Pro, it will be displayed in the **Item Select** column and its audio can be selected for monitoring and/or embedded audio output level adjustment.

## Host Audio

Audio from the host computer is selected here, enabling T-TAP Pro to monitor anything that would normally be presented via the host computer. For example, an editor could sample music from an online library, while concurrently playing back their NLE timeline. Or, a producer and editor could be communicating live during an editing session, using Zoom or some other video calling tool.

## Output Control Tab

Figure 11. Audio Mixer Screen, Output Control



The controls on the Output Control screen tab are similar to those on the Playback Monitor screen tab, except these audio meters report the output of that selection, not the input, and so will change when these sliders are adjusted.

The arrows on the lower right shows the Mixer In audio routed to the Audio Out (headphone) jack on the T-TAP Pro is downstream of the Mixer In controls above, and so the audio level routed to that Audio Out jack is affected by both the Mixer in slider above and the Headphone slider below. And because the Mixer In signal comes from the Playback Monitor tab screen, level adjustments made on that screen tab can also affect the levels shown here.

**NOTE:** The Mixer In On checkbox, when unchecked, mutes the embedded (HDMI or SDI) audio output, but does not mute the Audio Out (Headphone) signal, to maintain headphone monitoring.

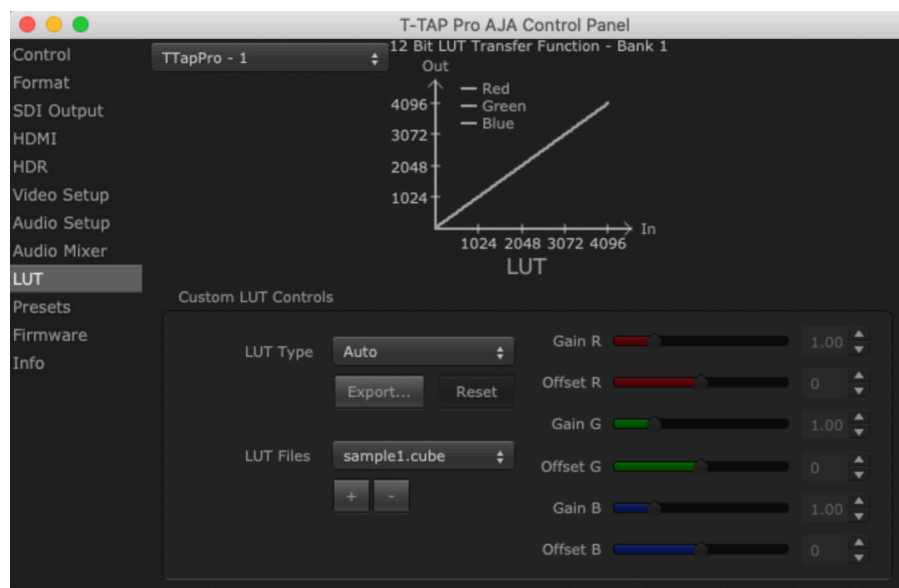
The Video Out audio signal is routed as embedded audio to the SDI and HDMI video outputs. This output level is always reported on the T-TAP Pro's front panel .

This screen tab also includes a software knob control that is linked to the T-TAP Pro's front panel hardware knob.

## Knob Control

The Master and Monitor buttons above and below the software knob delegates that knob to adjust either the audio level output coming from the Playback Monitor screen tab (Master), or to adjust only the audio level being sent to the T-TAP Pro's front panel Audio Out port (Monitor). These adjustments can be made using either the software knob on this screen, or the T-TAP Pro's front panel hardware Volume knob. The default for T-TAP Pro is for this control to be enabled for monitor (headphone) output only. So when you first install your device, you will be in no danger of unintentionally affecting your baseband output (only the headphone output will change).

## LUT Screen



The LUT screen allows you to create a custom 10-bit color look up table (LUT) on the T-TAP Pro output, for matching a production "look" on a specific display. These custom LUTs can also be exported as .cube files for use with supported AJA devices and compatible professional applications. Users can also load externally generated LUT files into the T-TAP Pro to ensure consistent color among different devices.

**NOTE:** .cube files are the new standard for importing and exporting LUTs with AJA Control Panel as of v16.2. Prior to v16.2, Control Panel supported CSV files containing LUT information. While this LUT formatting is still supported for import, it is no longer supported for export.

## Custom LUT Controls

The LUT Transfer Function screen displays an approximate representation of the effect of the current LUT settings. When the controls are activated by selecting a User LUT Type, Red, Blue, and Green curves show the transfer functions of each color.

**NOTE:** The displayed curves are approximate. Curves for some extreme settings may diverge significantly from the actual transfer functions.

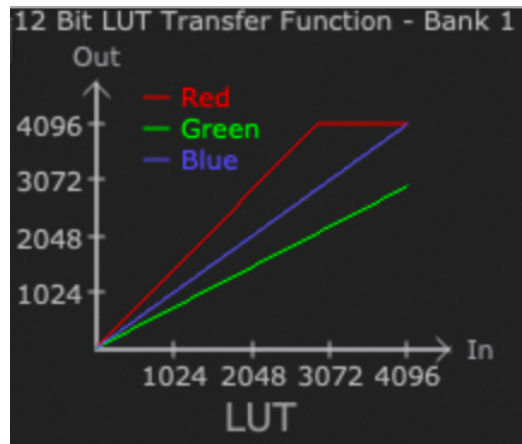
## LUT Type

---

Selects the type of LUT. Choose from

- Auto - LUT will be automatically selected. This setting intelligently applies the type of LUT required in the majority of use cases. For example, if the Frame Buffer is set to SD 608 and the Output set to HD 709, then an industry standard curve for changing 608 to 709 color space is applied.
- Linear - A linear 1:1 LUT is applied, resulting in no color change (every value for source is mapped to the same value for output).
- SMPTE->FullRange - A conversion LUT from SMPTE to Full Range is applied.
- FullRange->SMPTE - A conversion LUT from Full Range to SMPTE is applied.
- User Linear - Activates the Gain and Offset controls, allowing the manual creation of a custom LUT. Initial default setting is linear.

Figure 12. Example LUT Transfer Function Curves



- User Film Stream - Activates the Gain and Offset controls with a default curve matching Grass Valley FilmStream cameras, and also allowing manual creation of a custom LUT.
- User LUT File - See "[LUT Files](#)" below.

## Gain and Offset Controls

---

When activated, the controls on the right allow adjustment of Gain and Offset for Red, Blue and Green.

- Sliders - The sliders on the right can be used to change the values for each color.
- Numeric Entry - You also enter a numeric value by clicking on the displayed number, and can increase or decrease the values clicking on the up/down arrow boxes.
- Cut and Paste - Right clicking on a displayed number opens a Cut, Copy, Paste dropdown menu for convenient numeric entry.

## Export

---

The Export button can be used to save the current LUT values as a .cube file. The LUT file can be named and you can specify the location to save the file. This Export feature lets you take the custom LUT with you and re-import it to another system or location for consistency.

## Reset

---

Clicking on the Reset button resets the currently selected LUT Type to its default values (not active for a User LUT file).

## LUT Files

---

The User LUT File setting above activates the LUT Files dropdown, allowing the selection of a previously saved LUT file. You can create a custom LUT file using most text editors or spread sheets, provided the data is arranged according to the LUT File Format Specification that follows (see ["LUT File Format Specification" on page 32](#)).

### Uploading Custom User LUT file

---

Once the LUT file is created, you can upload it with the following steps:

1. Before loading a LUT, make sure you are using an RGB/RGBA frame buffer format, and that you have a AJA Video Device that supports LUTs.
2. Open AJA Control Panel and select the "LUT" pane.
3. Click the "LUT Type" popup and choose "User LUT File" menu item. Note "LUT Files" options become enabled.
4. Click the "+" button and use the navigation dialog to choose a custom LUT file. The LUT is now loaded.

## LUT File Format Specification

---

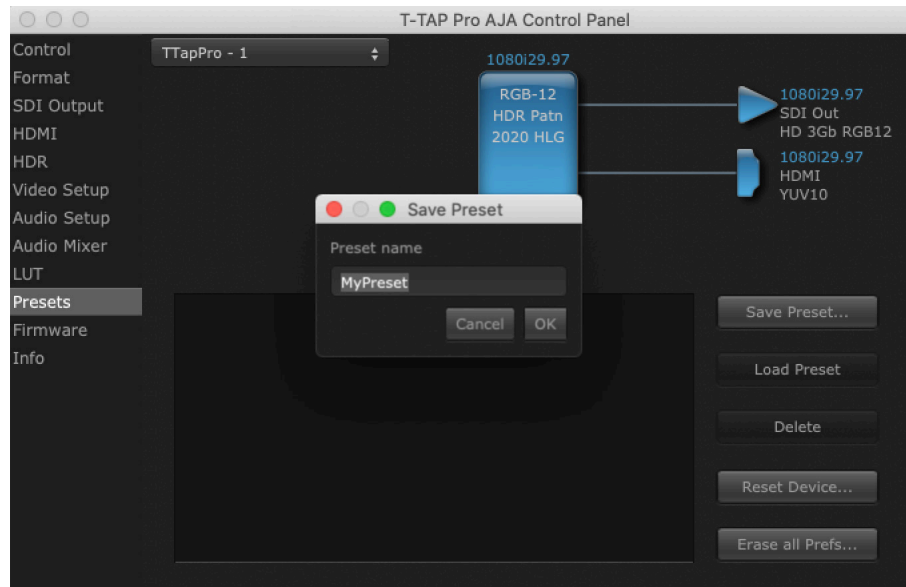
LUT files are normal text files that contain 1025 lines (numbered 0 - 1024). Each line contains 3 integer values in the range 0 - 1023, representing 10 bit R, G, B component output values. Component values may be separated by one or more commas, spaces, or tabs. The example below show LUT File contents for Line 0, Line 1, Line 2, and Line 1024, with several valid ways to separate the numbers in a line, using comma and space, tab, or only space.

- 16, 17, 17
- 17 18 18
- 19 19 21
- 1000, 1022, 1023

In the example above, the first line (Line 0) represents the output values for the case where R=0, G=0, or B=0. In other words, if the R component of a pixel is set to 0, then set R component value to 16. Likewise, if G is set to 0, then set G to 17. The second line (Line 1) does a similar thing for input component values equal to 1.

A simple way to construct a LUT file is to go to user linear in Control Panel and make some modifications, then click export and you will have a .cube file. You can then either import that LUT on a different workstation, or else use a text editor to make manual adjustments if desired.

# Presets Screen



After configuring the AJA Control Panel screens, you can then save all your settings as a snapshot for later recall, called a preset. In this way, you can organize presets for all your typical tasks, eliminating manual reconfiguration.

## Saving, Loading and Deleting Presets

To save a preset, simply go to the Presets screen and click “Save Preset”. A dialog will be presented asking you for a file name. Enter a meaningful name and click “OK”. Thereafter the preset will be available under the Control Panel “Presets” list.

From the Presets screen you can manage your collection of presets easily. To Load or Delete a stored preset, just select it with your mouse and then click the “Load Preset” or “Delete” button respectively .

## Transferring Saved Presets

If you want to use a saved Preset on another workstation, you can simply copy the file on removable storage and install it at the new location. The Preset files are stored at:

### macOS Preset Files Storage Location

- From the Finder, hold down the Option key (to display the Library directory) and click on Go/Library/Application Support/AJA/<device name>/Presets/

### Windows Preset Files Storage Location

- c:\Users\<username>\AppData\Local\AJA\Control Panel\<device name> Presets\

## Reset to Default

When you click the "Reset Device" button the Default User Preference file will be deleted and AJA Control Panel will do one of the following:

- If a Default Global Preference is found, it is loaded and the device is set to this state.
- If a Default Global Preference file is not found, "factory defaults" are loaded and the device is set to this state.

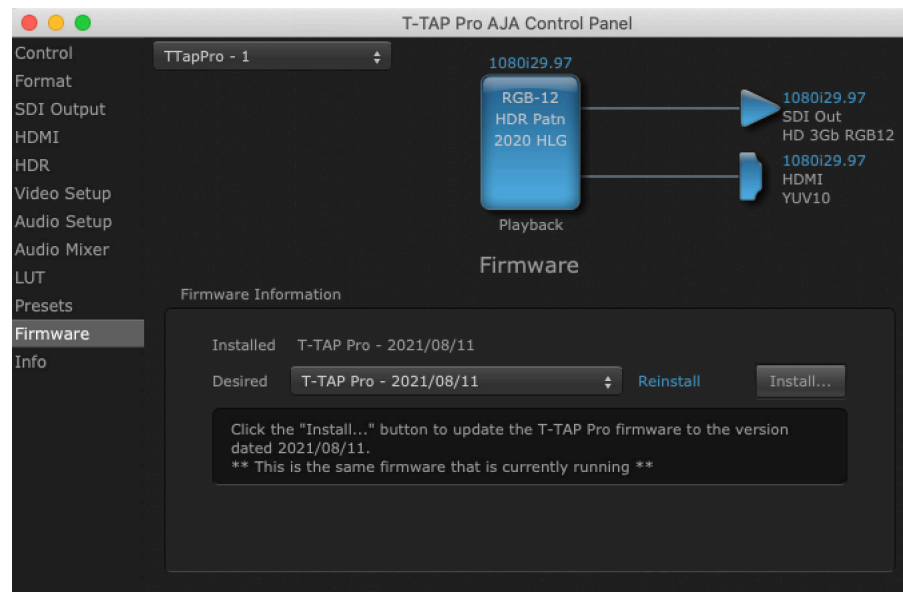
*NOTE: See "Default Preferences" on page 17 for more information.*

## Erase all Prefs

For technical support purposes you may be required to remove the current Preference settings. Clicking on the "Erase all Prefs" button deletes the current Default User Preference file without accessing a Default Global Preference file, if one exists. Current AJA device settings are not altered, but changing any setting will immediately regenerate a Default User Preference file with the changed settings.

*NOTE: Clicking on the AJA Control Panel Erase All Prefs button does NOT delete an existing Global Preference file from that shared location.*

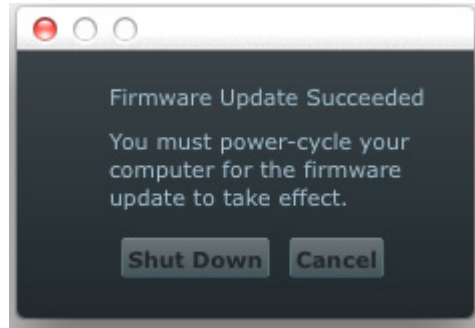
## Firmware Screen



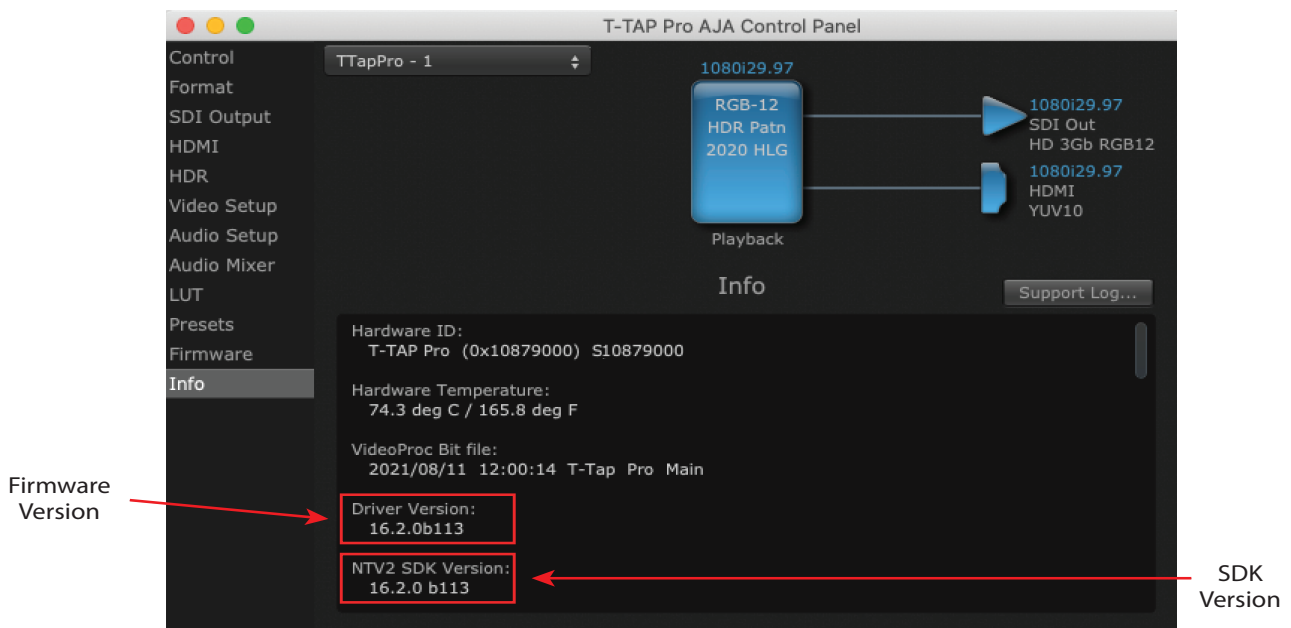
Use the Firmware Screen to access the firmware install screen. Click install to erase current firmware and load the firmware version contained in your current driver installation. Note the Installation message shown below.

You will be required to power-cycle your computer and T-TAP Pro to finish the update.

Figure 13. Update Completed



## Info Screen



This screen shows the software files that have been installed on your system. This information may be needed if you talk to an AJA Customer Service representative to determine if files are missing or need updating.

The current firmware and SDK versions for the T-TAP Pro are shown in the fields specified above.

# Appendix A – Specifications

---

## T-TAP Pro Pro Tech Specs

---

### Video Formats

---

- (4K) 4096 x 2160p 23.98, 24, 25, 29.97, 30, 47.95, 48, 50, 59.94, 60
- (UltraHD) 3840 x 2160p 23.98, 24, 25, 29.97, 30, 50, 59.94, 60
- (2K) 2048 x 1080p 23.98, 24, 25, 29.97, 30, 47.95, 48, 50, 59.94, 60
- (2K) 2048 x 1080PsF 23.98, 24, 25
- (HD) 1080p 23.98, 24, 25, 29.97, 30, 50, 59.94, 60
- (HD) 1080PsF 23.98, 24, 25, 29.97, 30
- (HD) 1080i 50, 59.94, 60
- (HD) 720p 50, 59.94, 60
- (SD) 625i 50
- (SD) 525i 59.94

Note: High Frame Rate and 4K/UltraHD capabilities are dependent on host system attributes. Not all systems and configurations will support all frame rates and raster sizes.

### Video Outputs Digital

---

- 12G-SDI\*, SMPTE-2082, 12-bit\*, 10-bit
- 6G-SDI\*, SMPTE-2081, 10-bit
- 3G-SDI, SMPTE 425
  - RGB 4:4:4 12-bit\*, YCbCr 4:2:2 10-bit (Level A, Level B-DL)
- 1.5G-SDI, SMPTE 292M
  - Single Link HD-SDI YCbCr 4:2:2 10-bit
- 270 Mbps SDI, SMPTE 259M-C
  - YCbCr 4:2:2 10-bit, 8-bit
- HDMI v2.0
  - 30/36-bits/pixel, RGB or YUV, 6 Gbps per color component
  - 4K, UltraHD, 2K, HD and SD with HFR support up to 60p (4:2:2), 10-bit

\*Bit depth support is application dependent. Check with your software manufacturer for compatibility.

### HDR

---

- SDI: VPID signaling for SDR/HDR Transfer Characteristics, Colorimetry and Luminance
- HDMI: HDR10 Support - HDR Infoframe metadata, compatible with HDMI 2.0a/CTA-861.3
- HDMI: HLG Support - compatible with HDMI 2.0b/CTA-861-G

Note: HDR support is application dependent. Check with your software manufacturer for compatibility.

### Audio Outputs Digital

---

- 16-channel, 24-bit SDI embedded audio, 48 kHz sample rate, synchronous
- 8-channel, 24-bit HDMI embedded audio, 48 kHz sample rate, synchronous

## Audio Outputs Analog

---

- 2-channel, 18-bit D/A analog audio, 48 kHz sample rate, unbalanced, using standard 3.5mm jack
- 1.2V RMS full scale digital output level (0 dBFS)

## Size (w x d x h)

---

- 5.0" x 1.0" x 5.0" (127.0 x 25.4 x 127.0 mm)

## Weight

---

- .06 lb (0.23 kg)

## Power

---

- 18W Max

## Environment

---

- Safe Operating Temperature: 0 to 35 C (32 to 95 F)
- Safe Storage Temperature (Power OFF): -40 to 60 C (-40 to 140 F)
- Operating Relative Humidity: 10-90% noncondensing
- Operating Altitude: <3,000 meters (<10,000 feet)

# Appendix B – Safety and Compliance

---

## Federal Communications Commission (FCC) Compliance Notices

---

### Class A Interference Statement

---

This equipment has been tested and found to comply with the limits for a Class A digital device, pursuant to Part 15, Subpart B of the FCC Rules. These limits are designed to provide reasonable protection against harmful interference in a residential installation. This equipment generates, uses, and can radiate radio frequency energy and, if not installed and used in accordance with the instructions, may cause harmful interference to radio communications. However, there is no guarantee that interference will not occur in a particular installation. If this equipment does cause harmful interference to radio or television reception, which can be determined by turning the equipment off and on, the user is encouraged to try to correct the interference by one or more of the following measures:

- Reorient or relocate the receiving antenna.
- Increase the separation between the equipment and receiver.
- Connect the equipment into an outlet on a circuit different from that to which the receiver is connected.
- Consult the dealer or an experienced radio/TV technician for help.

### FCC Caution

---

This device complies with Part 15 of the FCC Rules. Operation is subject to the following two conditions: (1) This device may not cause harmful interference, and (2) this device must accept any interference received, including interference that may cause undesired operation.

## Canadian ICES Statement

---

### Canadian Department of Communications Radio Interference Regulations

This digital apparatus does not exceed the Class A limits for radio-noise emissions from a digital apparatus as set out in the Radio Interference Regulations of the Canadian Department of Communications. This Class A digital apparatus complies with Canadian ICES-003.

### Règlement sur le brouillage radioélectrique du ministère des Communications

Cet appareil numérique respecte les limites de bruits radioélectriques visant les appareils numériques de classe A prescrites dans le Règlement sur le brouillage radioélectrique du ministère des Communications du Canada. Cet appareil numérique de la Classe A est conforme à la norme NMB-003 du Canada.

## European Union, European Free Trade Association (EFTA) and United Kingdom Regulatory Compliance

---

This equipment may be operated in the countries that comprise the member countries of the European Union, European Free Trade Association and the United Kingdom. These countries, listed in the following paragraph, are referred to as The European Community throughout this document:

AUSTRIA, BELGIUM, BULGARIA, CROATIA, CZECH REPUBLIC, DENMARK, ESTONIA, FINLAND, FRANCE, GERMANY, GREECE, HUNGARY, ICELAND, IRELAND, ITALY, LATVIA, LIECHTENSTEIN, LITHUANIA, LUXEMBOURG, MALTA, NETHERLANDS, NORWAY, POLAND, PORTUGAL, REPUBLIC OF CYPRUS, ROMANIA, SLOVAK REPUBLIC, SLOVENIA, SPAIN, SWEDEN, SWITZERLAND, UNITED KINGDOM

## Declaration of Conformity

Marking by these symbols indicates compliance with the Essential Requirements of the EMC Directive of the European Union 2014/30/EU.



This equipment meets the following conformance standards:

Safety:

IEC 62368-1: 2014 + A11, EN 60065: 2014 + A11 (T-Mark Licenses),

EN 62368-1: 2014, IEC 60065: 2014 (CB Scheme Report/Certificates)

Additional licenses issued for specific countries available on request.

Emissions:

EN 55032: 2015, CISPR 32: 2015

EN 61000-3-2: 2014, EN 61000-3-3: 2013

Immunity:

EN 55103-2: 2009

EN 61000-4-2: 2009, EN 61000-4-3: 2006+A1: 2008+A2: 2010, EN 61000-4-4: 2012,

EN 61000-4-5: 2014 + A1: 2017, EN 61000-4-6: 2013, EN 61000-4-11: 2020

The product is also licensed for additional country specific standards as required for the International Marketplace.



**Warning!** This is a Class A product. In a domestic environment, this product may cause radio interference, in which case, the user may be required to take appropriate measures.

**Achtung!** Dieses ist ein Gerät der Funkstörgrenzwertklasse A. In Wohnbereichen können bei Betrieb dieses Gerätes Rundfunkstörungen auftreten, in welchen Fällen der Benutzer für entsprechende Gegenmaßnahmen verantwortlich ist.

**Attention!** Ceci est un produit de Classe A. Dans un environnement domestique, ce produit risque de créer des interférences radioélectriques, il appartiendra alors à l'utilisateur de prendre les mesures spécifiques appropriées.

## Recycling Notice



This symbol on the product or its packaging indicates that this product must not be disposed of with your other household waste. Instead, it is your responsibility to dispose of your waste equipment by handing it over to a designated collection point for the recycling of waste electrical and electronic equipment. The separate collection and recycling of your waste equipment at the time of disposal will help conserve natural resources and ensure that it is recycled in a manner that protects human health and the environment. For more information about where you can drop off your waste for recycling, please contact your local authority, or where you purchased your product.

## Korea KCC Compliance Statement

---

### 사용자안내문

이 기기는 업무용 환경에서 사용할 목적으로 적합성평가를 받은 기기로서 가정용 환경에서 사용하는 경우 전파간섭의 우려가 있습니다.

## Taiwan Compliance Statement

---

**警告使用者：**  
這是甲類的資訊產品，在居住的環境中使用時，可能會造成射頻干擾，在這種情況下，使用者會被要求採取某些適當的對策。

This is a Class A product based on the standard of the Bureau of Standards, Metrology and Inspection (BSMI) CNS 13438, Class A. In a domestic environment this product may cause radio interference in which case the user may be required to take adequate measures.

## Japan Compliance Statement

---

この装置は、クラスA情報技術装置です。この装置を家庭環境で使用すると電波妨害を引き起こすことがあります。この場合には使用者が適切な対策を講ずるよう要求されることがあります。 VCCI-A

This is a Class A product based on the standard of the VCCI Council (VCCI 32: 2016). If this equipment is used in a domestic environment, radio interference may occur, in which case, the user may be required to take corrective actions.

## Translated Warning and Caution Messages

---

The following caution statements, warning conventions, and warning messages apply to this product and manual.



Warning Symbol



Caution Symbol

## Before Operation Please Read These Instructions



**Warning!** Read and follow all warning notices and instructions marked on the product or included in the documentation.

**Avertissement!** Lisez et conformez-vous à tous les avis et instructions d'avertissement indiqués sur le produit ou dans la documentation.

**Warnung!** Lesen und befolgen Sie die Warnhinweise und Anweisungen, die auf dem Produkt angebracht oder in der Dokumentation enthalten sind.

**¡Advertencia!** Lea y siga todas las instrucciones y advertencias marcadas en el producto o incluidas en la documentación.

**Aviso!** Leia e siga todos os avisos e instruções assinalados no produto ou incluídos na documentação.

**Avviso!** Leggere e seguire tutti gli avvisi e le istruzioni presenti sul prodotto o inclusi nella documentazione.



**Warning!** Do not use this device near water and clean only with a dry cloth.

**Avertissement!** N'utilisez pas cet appareil près de l'eau et nettoyez-le seulement avec un tissu sec.

**Warnung!** Das Gerät nicht in der Nähe von Wasser verwenden und nur mit einem trockenen Tuch säubern.

**¡Advertencia!** No utilice este dispositivo cerca del agua y límpielo solamente con un paño seco.

**Aviso!** Não utilize este dispositivo perto da água e limpe-o somente com um pano seco.

**Avviso!** Non utilizzare questo dispositivo vicino all'acqua e pulirlo soltanto con un panno asciutto.



**Warning!** Do not block any ventilation openings. Install in accordance with the manufacturer's instructions.

**Avertissement!** Ne bloquez aucune ouverture de ventilation. Suivez les instructions du fabricant lors de l'installation.

**Warnung!** Die Lüftungsöffnungen dürfen nicht blockiert werden. Nur gemäß den Anweisungen des Herstellers installieren.

**¡Advertencia!** No bloquee ninguna de las aberturas de la ventilación. Instale de acuerdo con las instrucciones del fabricante.

**Aviso!** Não obstrua nenhuma das aberturas de ventilação. Instale de acordo com as instruções do fabricante.

**Avviso!** Non ostruire le aperture di ventilazione. Installare in conformità con le istruzioni del fornitore.



**Warning!** Do not install near any heat sources such as radiators, heat registers, stoves, or other apparatus (including amplifiers) that produce heat.

**Avertissement!** N'installez pas l'appareil près d'une source de chaleur telle que des radiateurs, des bouches d'air de chauffage, des fourneaux ou d'autres appareils (amplificateurs compris) qui produisent de la chaleur.

**Warnung!** Nicht in der Nähe von Wärmequellen wie Heizkörpern, Heizregistern, Öfen oder anderen Wärme erzeugenden Geräten (einschließlich Verstärkern) aufstellen.

**¡Advertencia!** No instale cerca de fuentes de calor tales como radiadores, registros de calor, estufas u otros aparatos (incluidos amplificadores) que generan calor.

**Aviso!** Não instale perto de nenhuma fonte de calor tal como radiadores, saídas de calor, fogões ou outros aparelhos (incluindo amplificadores) que produzam calor.

**Avviso!** Non installare vicino a fonti di calore come termosifoni, diffusori di aria calda, stufe o altri apparecchi (amplificatori compresi) che emettono calore.



**Warning!** Since the Mains plug is used as the disconnection for the device, it must remain readily accessible and operable.

**Avertissement!** Puisque la prise principale est utilisée pour débrancher l'appareil, elle doit rester aisément accessible et fonctionnelle.

**Warnung!** Da der Netzstecker als Trennvorrichtung dient, muss er stets zugänglich und funktionsfähig sein.

**¡Advertencia!** Puesto que el enchufe de la red eléctrica se utiliza como dispositivo de desconexión, debe seguir siendo fácilmente accesible y operable.

**Aviso!** Dado que a ficha principal é utilizada como a desconexão para o dispositivo, esta deve manter-se prontamente acessível e funcional.

**Avviso!** Poiché il cavo di alimentazione viene usato come dispositivo di sconnessione, deve rimanere prontamente accessibile e operabile.



**Warning!** Protect the power cord from being walked on or pinched particularly at plugs, convenience receptacles, and the point where they exit from the device.

**Avertissement!** Protégez le cordon d'alimentation pour que l'on ne marche pas dessus ou qu'on le pince, en particulier au niveau des prises mâles, des réceptacles de convenance, et à l'endroit où il sort de l'appareil.

**Warnung!** Vermeiden Sie, dass auf das Netzkabel getreten oder das Kabel geknickt wird, insbesondere an den Steckern, den Steckdosen und am Kabelausgang am Gerät.

**¡Advertencia!** Proteja el cable de corriente para que no se le pise ni apriete, en especial cerca del enchufe, los receptáculos de conveniencia y el punto del que salen del equipo.

**Aviso!** Proteja o cabo de alimentação de ser pisado ou de ser comprimido particularmente nas fichas, em tomadas de parede de conveniência e no ponto de onde sai do dispositivo.

**Avviso!** Proteggere il cavo di alimentazione in modo che nessuno ci cammini sopra e che non venga schiacciato soprattutto in corrispondenza delle spine e del punto in cui esce dal dispositivo.



**Warning!** Unplug this device during lightning storms or when unused for long periods of time.

**Avertissement!** Débranchez cet appareil pendant les orages avec éclairs ou s'il est inutilisé pendant de longues périodes.

**Warnung!** Das Gerät ist bei Gewitterstürmen oder wenn es über lange Zeiträume ungenutzt bleibt vom Netz zu trennen.

**¡Advertencia!** Desenchufe este dispositivo durante tormentas eléctricas o cuando no se lo utilice por largos periodos del tiempo.

**Aviso!** Desconecte este dispositivo da tomada durante trovoadas ou quando não é utilizado durante longos períodos de tempo.

**Avviso!** Utilizzare soltanto i collegamenti e gli accessori specificati e/o venduti dal produttore, quali il treppiedi e l'esoscheletro.



**Warning!** Do not open the chassis. There are no user-serviceable parts inside. Opening the chassis will void the warranty unless performed by an AJA service center or licensed facility.

**Avertissement!** Ne pas ouvrir le châssis. Aucun élément à l'intérieur du châssis ne peut être réparé par l'utilisateur. La garantie sera annulée si le châssis est ouvert par toute autre personne qu'un technicien d'un centre de service ou d'un établissement agréé AJA.

**Warnung!** Öffnen Sie das Gehäuse nicht. Keine der Geräteteile können vom Benutzer gewartet werden. Durch das Öffnen des Gehäuses wird die Garantie hinfällig, es sei denn, solche Wartungsarbeiten werden in einem AJA-Service-Center oder einem lizenzierten Betrieb vorgenommen.

**¡Advertencia!** No abra el chasis. El interior no contiene piezas reparables por el usuario. El abrir el chasis anulará la garantía a menos que se lo haga en un centro de servicio AJA o en un local autorizado.

**Advertência!** Não abra o chassi. Não há internamente nenhuma peça que permita manutenção pelo usuário. Abrir o chassi anula a garantia, a menos que a abertura seja realizada por uma central de serviços da AJA ou por um local autorizado.

**Avvertenza!** Non aprire lo chassis. All'interno non ci sono parti riparabili dall'utente. L'apertura dello chassis invaliderà la garanzia se non viene effettuata da un centro ufficiale o autorizzato AJA.



**Warning!** Disconnect the external AC power supply line cord(s) from the mains power before moving the unit.

**Avertissement!** Retirez le ou les cordons d'alimentation en CA de la source d'alimentation principale lorsque vous déplacez l'appareil.

**Warnung!** Trennen Sie die Wechselstrom-Versorgungskabel vom Netzstrom, bevor Sie das Gerät verschieben.

**¡Advertencia!** Cuando mueva la unidad desenchufe de la red eléctrica el/los cable(s) de la fuente de alimentación CA tipo brick.

**Advertência!** Remova os cabos CA de alimentação brick da rede elétrica ao mover a unidade.

**Avvertenza!** Scollegare il cavo dell'alimentatore quando si sposta l'unità.



**Warning!** Only use attachments and accessories specified and/or sold by the manufacturer.

**Avertissement!** Utilisez seulement les attaches et accessoires spécifiés et/ou vendus par le fabricant.

**Warnung!** Verwenden Sie nur Zusatzgeräte und Zubehör angegeben und / oder verkauft wurde durch den Hersteller.

**¡Advertencia!** Utilice solamente los accesorios y conexiones especificados y/o vendidos por el fabricante.

**Aviso!** Utilize apenas equipamentos/acessórios especificados e/ou vendidos pelo fabricante.

**Avviso!** Utilizzare soltanto i collegamenti e gli accessori specificati e/o venduti dal produttore.



**Warning!** Refer all servicing to qualified service personnel. Servicing is required when the device has been damaged in any way, such as power-supply cord or plug is damaged, liquid has been spilled or objects have fallen into the device, the device has been exposed to rain or moisture, does not operate normally, or has been dropped.

**Avertissement!** Référez-vous au personnel de service qualifié pour tout entretien. L'entretien est exigé quand l'appareil a été endommagé de quelque manière que ce soit, par exemple lorsque le cordon d'alimentation ou la prise sont endommagés, que du liquide a été versé ou des objets sont tombés dans l'appareil, que l'appareil a été exposé à la pluie ou à l'humidité, ne fonctionne pas normalement ou est tombé.

**Warnung!** Das Gerät sollte nur von qualifizierten Fachkräften gewartet werden. Eine Wartung ist fällig, wenn das Gerät in irgendeiner Weise beschädigt wurde, wie bei beschädigtem Netzkabel oder Netzstecker, falls Flüssigkeiten oder Objekte in das Gerät gelangen, das Gerät Regen oder Feuchtigkeit ausgesetzt wurde, nicht ordnungsgemäß funktioniert oder fallen gelassen wurde.

**¡Advertencia!** Consulte al personal calificado por cuestiones de reparación. El servicio de reparación se requiere cuando el dispositivo ha recibido cualquier tipo de daño, por ejemplo cable o espigas dañadas, se ha derramado líquido o se han caído objetos dentro del dispositivo, el dispositivo ha sido expuesto a la lluvia o humedad, o no funciona de modo normal, o se ha caído.

**Aviso!** Remeta todos os serviços de manutenção para o pessoal de assistência qualificado. A prestação de serviços de manutenção é exigida quando o dispositivo foi danificado mediante qualquer forma, como um cabo de alimentação ou ficha que se encontra danificado/a, quando foi derramado líquido ou caíram objectos sobre o dispositivo, quando o dispositivo foi exposto à chuva ou à humidade, quando não funciona normalmente ou quando foi deixado cair.

**Avviso!** Fare riferimento al personale qualificato per tutti gli interventi di assistenza. L'assistenza è necessaria quando il dispositivo è stato danneggiato in qualche modo, ad esempio se il cavo di alimentazione o la spina sono danneggiati, è stato rovesciato del liquido è stato rovesciato o qualche oggetto è caduto nel dispositivo, il dispositivo è stato esposto a pioggia o umidità, non funziona correttamente o è caduto.

# 3 Year Warranty and Liability Information

---

## Limited Warranty on Hardware

---

AJA Video Systems, Inc. (AJA Video) warrants that the hardware product, not including storage modules or software components, will be free from defects in materials and workmanship for a period of three years from the date of purchase. AJA Video warrants that the storage modules provided as part of the hardware product will be free from defects in materials and workmanship for a period of one year from the date of purchase. AJA Video provides a separate software warranty as part of the license agreement applicable to software components.

If the Customer brings a valid claim under this limited warranty for a hardware product or storage module (hereafter, a “product”) during the applicable warranty period, AJA Video will, at its sole option and as the Customer’s sole remedy for breach of the above warranty, provide one of the following remedies:

- Repair or facilitate the repair the product within a reasonable period of time, free of charge for parts and labor.
- Replace the product with a direct replacement or with a product that performs substantially the same function as the original product.
- Issue a refund of the original purchase price less depreciation to be determined based on the age of the product at the time remedy is sought under this limited warranty.

To obtain service under this warranty, the Customer must notify AJA Video of the defect before expiration of the warranty period and make suitable arrangements for the performance of service by contacting AJA Video support through the channels set forth on the support contacts web page at <https://www.aja.com/support>.

Except as stated, the Customer shall bear all shipping, packing, insurance and other costs, excluding parts and labor, to effectuate repair. Customer shall pack and ship the defective product to a service center designated by AJA Video, with shipping charges prepaid. AJA Video shall pay to return the product to Customer, but only if to a location within the country in which the AJA Video service center is located. SOME JURISDICTIONS DO NOT ALLOW THE EXCLUSION OF IMPLIED WARRANTIES OR LIMITATIONS ON APPLICABLE STATUTORY RIGHTS OF A CONSUMER, SO SOME OR ALL OF THE TERMS OF THIS PARAGRAPH MAY NOT APPLY TO YOU.

## Limitation of Liability

---

Under no circumstances shall AJA video BE LIABLE IN ANY WAY FOR ANY LOST, CORRUPTED OR DESTROYED DATA, FOOTAGE OR WORK, OR FOR ANY OTHER INDIRECT, SPECIAL, INCIDENTAL OR CONSEQUENTIAL DAMAGES OR LOST PROFITS, OR FOR ANY THIRD PARTY CLAIM, IN CONNECTION WITH THE PRODUCT, WHETHER RESULTING FROM DEFECTS IN THE PRODUCT, SOFTWARE OR HARDWARE FAILURE, OR ANY OTHER CAUSE WHATSOEVER, EVEN IF AJA VIDEO HAS BEEN ADVISED OF THE POSSIBILITY OF SUCH DAMAGES. AJA VIDEO’S LIABILITY IN CONNECTION WITH THE PRODUCT SHALL UNDER NO CIRCUMSTANCES EXCEED THE PURCHASE PRICE PAID FOR THE PRODUCT. The foregoing limitations apply even if any remedy set forth in this LIMITED WARRANTY fails of its essential purpose. SOME JURISDICTIONS DO NOT ALLOW THE LIMITATION OF LIABILITY FOR PERSONAL INJURY, OR OF INCIDENTAL OR CONSEQUENTIAL DAMAGES, SO SOME OR ALL OF THE TERMS OF THIS PARAGRAPH MAY NOT APPLY TO YOU.

## Governing Law and Language; Your Rights

---

This limited warranty is the only warranty provided by AJA Video on the hardware product. It supersedes all prior or contemporaneous understandings regarding such subject matter. No amendment to or modification of this warranty will be binding unless in writing and signed by AJA Video. The laws of the State of California, USA will govern this warranty and any dispute arising from it. Any translation of this Agreement is intended for convenience and to meet local requirements and in the event of a dispute between the English and any non-English versions, the English version of this warranty will govern. This limited warranty gives you specific legal rights and you may have other rights that vary from jurisdiction to jurisdiction, some of which are noted above.

# AJA Software License Agreement

---

AJA VIDEO SYSTEMS, INC.

THIS IS AN AGREEMENT BETWEEN YOU AND AJA VIDEO SYSTEMS, INC. ("AJA") THAT GOVERNS YOUR USE OF the software ACCOMPANYING THIS LICENSE (E.G., AS installed on the device with which this license is provided).

The "AJA Software" referenced in this Agreement includes all such software, whether made available to you on disk, in read only memory, on any other media or in any other form, and all updates, corrections, enhancements and new versions of such software made available by AJA, together with all related documentation. BY INSTALLING OR USING THE AJA SOFTWARE, YOU ARE AGREEING TO BE BOUND BY THE TERMS OF THIS AGREEMENT. IF YOU DO NOT AGREE TO THE TERMS OF THIS AGREEMENT, DO NOT INSTALL OR USE IT AND, IF APPLICABLE, RETURN THE AJA SOFTWARE TO THE PLACE WHERE YOU OBTAINED IT FOR A REFUND.

1. License Grant. AJA hereby grants you a nonexclusive, personal, non-sublicenseable and limited license to install and use AJA Software on a computer or AJA device. The foregoing license also includes the right to make copies of the AJA Software in machine-readable form for installation and backup purposes only, and provided that each copy you make must include all copyright or other proprietary notices contained on the original.

2. Limitations. You may not decompile, reverse engineer, disassemble, modify, or create derivative works of the AJA Software or any part thereof except to the extent (if any) authorized by applicable law notwithstanding the foregoing restriction. You may not rent, lease, lend, loan, distribute or act as a service bureau or "cloud service" provider with respect to use of the AJA Software or any functionality thereof. THE AJA SOFTWARE IS NOT INTENDED FOR USE IN THE OPERATION OF NUCLEAR FACILITIES, AIRCRAFT NAVIGATION OR COMMUNICATION SYSTEMS, AIR TRAFFIC CONTROL SYSTEMS, LIFE SUPPORT MACHINES OR OTHER EQUIPMENT IN WHICH THE FAILURE OF THE AJA SOFTWARE COULD LEAD TO DEATH, PERSONAL INJURY, OR SEVERE PHYSICAL OR ENVIRONMENTAL DAMAGE.

3. Reservation of Rights. The AJA Software is protected by law, including without limitation copyright law. The AJA Software is licensed, not sold, to you. AJA and its licensors reserve all rights not expressly granted to you by this Agreement. You own the media on which the AJA Software is recorded but AJA and/or AJA's licensor(s) retain ownership of the AJA Software itself. You may not use the AJA Software for any illegal purpose.

4. Transfer. You may make a one-time permanent transfer of all of your license rights to the AJA Software to another person or entity, provided that: (a) you transfer all of the AJA Software, including all its component parts, original media, printed materials and this Agreement; (b) you do not retain any copies of the AJA Software, including any copies stored on a computer or other device; and (c) you transfer the AJA Software subject to this Agreement, and the person or entity receiving the AJA Software accepts the terms and conditions of this Agreement.

5. NFR (Not for Resale) Copies and Add-On Features: Notwithstanding anything to the contrary in this Agreement, (a) AJA Software that is labeled "Not for Resale" or otherwise provided to you on a promotional or demonstration basis may be used only for your demonstration, testing and evaluation purposes and may not be resold or transferred; and (b) AJA may make available certain software components ("Add-On Features") under separate terms and conditions, in which case those separate terms and conditions apply and the Add-On Features are not considered AJA Software under this Agreement.

6. Termination. Your rights in the AJA Software are conditioned on complying with this Agreement, and those rights (together with this Agreement) will terminate automatically, without notice from AJA, if you fail to comply with any term(s) of this Agreement. Upon termination of this Agreement, you must cease all use of the AJA Software and destroy all copies, full or partial, of the AJA Software in your possession or control.

7. Limited Warranty on AJA Software. If you comply with all terms of this Agreement and use the AJA Software in accordance with its documentation, and you install any patches or other updates made available to the AJA Software by AJA, AJA warrants that the AJA Software will perform substantially in accordance with its documentation for a period of ninety (90) days from the date of your original retail purchase. Your exclusive remedy under this warranty will be, at AJA's option, a refund of the purchase

price of the product containing the AJA Software or an update to or replacement of the AJA Software (or applicable component of it). THIS LIMITED WARRANTY AND ANY IMPLIED WARRANTIES ON THE AJA SOFTWARE INCLUDING, BUT NOT LIMITED TO, ANY WARRANTIES OF MERCHANTABILITY, OF SATISFACTORY QUALITY, OR OF FITNESS FOR A PARTICULAR PURPOSE, ARE LIMITED IN DURATION TO NINETY (90) DAYS FROM THE DATE OF ORIGINAL RETAIL PURCHASE. SOME JURISDICTIONS DO NOT ALLOW LIMITATIONS ON HOW LONG A WARRANTY LASTS, SO THE ABOVE LIMITATION MAY NOT APPLY TO YOU. THIS LIMITED WARRANTY GIVES YOU SPECIFIC LEGAL RIGHTS, AND YOU MAY ALSO HAVE OTHER RIGHTS WHICH VARY BY JURISDICTION.

8. Disclaimer of Other Warranties on Aja Software. EXCEPT FOR THE LIMITED WARRANTY ON AJA SOFTWARE SET FORTH ABOVE, AJA AND AJA'S LICENSORS (COLLECTIVELY REFERRED TO AS "AJA" FOR THE PURPOSES OF SECTIONS 8 AND 9) HEREBY DISCLAIM ALL WARRANTIES AND CONDITIONS WITH RESPECT TO THE AJA SOFTWARE, WHETHER EXPRESS, IMPLIED OR STATUTORY, INCLUDING, BUT NOT LIMITED TO, THE IMPLIED WARRANTIES AND/OR CONDITIONS OF MERCHANTABILITY, OF SATISFACTORY QUALITY, OF FITNESS FOR A PARTICULAR PURPOSE, OF ACCURACY, AND OF QUIET ENJOYMENT. FURTHER, AJA DOES NOT MAKE ANY WARRANTY REGARDING NON-INFRINGEMENT OF THIRD PARTY RIGHTS. SUBJECT ONLY TO THE LIMITED WARRANTY SET FORTH IN SECTION 7, YOU EXPRESSLY ACKNOWLEDGE AND AGREE THAT USE OF THE AJA SOFTWARE IS AT YOUR SOLE RISK. AJA DOES NOT WARRANT AGAINST INTERFERENCE WITH YOUR ENJOYMENT OF THE AJA SOFTWARE, THAT THE AJA SOFTWARE WILL MEET YOUR REQUIREMENTS, THAT THE OPERATION OF THE AJA SOFTWARE WILL BE UNINTERRUPTED OR ERROR-FREE, OR THAT DEFECTS IN THE AJA SOFTWARE WILL BE CORRECTED. NO ORAL OR WRITTEN INFORMATION OR ADVICE GIVEN BY AJA OR AN AJA AUTHORIZED REPRESENTATIVE WILL CREATE A WARRANTY. SOME JURISDICTIONS DO NOT ALLOW THE EXCLUSION OF IMPLIED WARRANTIES OR LIMITATIONS ON APPLICABLE STATUTORY RIGHTS OF A CONSUMER, SO SOME OR ALL OF THE TERMS OF THIS PARAGRAPH MAY NOT APPLY TO YOU.

9. Limitation of Liability. TO THE EXTENT NOT PROHIBITED BY LAW, IN NO EVENT WILL AJA BE LIABLE FOR PERSONAL INJURY, OR ANY INCIDENTAL, SPECIAL, INDIRECT OR CONSEQUENTIAL DAMAGES OR LOST PROFITS WHATSOEVER, INCLUDING, WITHOUT LIMITATION, DAMAGES FOR LOSS OF DATA, BUSINESS INTERRUPTION OR ANY OTHER COMMERCIAL DAMAGES OR LOSSES, ARISING OUT OF OR RELATED TO YOUR USE OR INABILITY TO USE THE AJA SOFTWARE, HOWEVER CAUSED, REGARDLESS OF THE THEORY OF LIABILITY (E.G., WHETHER UNDER CONTRACT, TORT OR OTHERWISE) AND EVEN IF AJA HAS BEEN ADVISED OF THE POSSIBILITY OF SUCH DAMAGES. In no event will AJA's total liability to you for all damages (INCLUDING WITHOUT LIMITATION BREACH OF WARRANTY) exceed the amount of fifty dollars (\$50.00). The foregoing limitations will apply even if the any remedy set forth in this agreement fails of its essential purpose. SOME JURISDICTIONS DO NOT ALLOW THE LIMITATION OF LIABILITY FOR PERSONAL INJURY, OR OF INCIDENTAL OR CONSEQUENTIAL DAMAGES, SO SOME OR ALL OF THE TERMS OF THIS PARAGRAPH MAY NOT APPLY TO YOU.

10. Export Law Assurances. You may not use or otherwise export or reexport the AJA Software except as authorized by United States law and the laws of the jurisdiction in which the AJA Software was obtained. In particular, but without limitation, the AJA Software may not be exported or re-exported (a) into (or to a national or resident of) any U.S. embargoed countries, or (b) to anyone on the U.S. Treasury Department's list of Specially Designated Nationals or the U.S. Department of Commerce Denied Persons List or Entity List or any similar legal designation. By using the AJA Software, you represent and warrant that you are not located in, under control of, or a national or resident of any such country or on any such list.

11. Government End Users. The AJA Software including its documentation is a "Commercial Item", as that term is defined at 48 C.F.R. § 2.101, consisting of "Commercial Computer Software" and "Commercial Computer Software Documentation", as such terms are used in 48 C.F.R. § 12.212 or 48 C.F.R. § 227.7202 (or their successors), as applicable. Consistent with these provisions, the AJA Software is licensed to U.S. Government end users (a) only as a Commercial Item and (b) with only those rights as are granted to all other end users pursuant to this Agreement. Unpublished-rights reserved under the copyright laws of the United States.

12. Controlling Law and Severability. This Agreement will be governed by and construed in accordance with the laws of the State of California, as applied to agreements entered into and to be performed entirely within California between California residents. This Agreement will not be governed by the United Nations

Convention on Contracts for the International Sale of Goods, the application of which is expressly excluded. If for any reason a court of competent jurisdiction finds any provision, or portion thereof, to be unenforceable, the remainder of this Agreement will continue in full force and effect.

13. Complete Agreement; Governing Language. This Agreement constitutes the entire agreement between the parties with respect to the use of the AJA Software licensed hereunder and supersedes all prior or contemporaneous understandings regarding such subject matter. No amendment to or modification of this Agreement will be binding unless in writing and signed by AJA. Any translation of this Agreement is intended for convenience and to meet local requirements and in the event of a dispute between the English and any non-English versions, the English version of this Agreement will govern.

# Index

---

## Symbols

- 2SI Alignment 20
- 3G Transport 23
- 3 Year Warranty and Liability Information 45

## A

- AJA Agent is not running 16
  - Restart Services 16
- AJA Control Panel 6
  - Overview 14
  - User Interface 14
- AJA Control Room 6
- AJA Software 6
- AJA Software License Agreement 46
- AJA Support 2
- AJA System Test 6
- AJA Utilities 6
- Audio Channels 23
- Audio Gain Control Knob 8
- Audio Level Meter 7
- Audio Mixer Screen 27
- Audio Monitor 27
- Audio Monitoring 18
- Audio Monitoring Routing Diagram 19
- Audio Output Connector 7
- Audio Setup Screen 27

## C

- Cable Connections 7
- Colorimetry 25
- Color Meanings 15
- Color Space 22, 23, 26
- Controlling Application 15
- Controlling Application Format Selection 16
- Control Panel 6
  - User Interface 14
- Control Panel Restart Services 16
- Control Room 6
- Control Screen 20
- Custom LUT Controls 30

## D

- Default Preferences 17
- Default State 20
- Delay Out 27
- Delete Preset 33
- Digital Primaries 25
- Display Mastering Luminance 25

## E

- Erase all Prefs 34
- Export 31

## F

- Features 5
- Firmware Screen 34
- Firmware Update 13
- Format Screen 21
- Framebuffer 15

## G

- Gamma 26
- Global Preference 17
- Global Preference File Location 17
- Graphic File Display 21

## H

- HDMI Output 9
- HDMI Screen 23
- HDR Playback Settings 25
- HDR Screen 24
- Heat Dissipation 12
- Hold Last App 21
- Host Audio 29

## I

- Info Screen 35
- Installation Overview 11
- Installing Software 12

## K

- Knob Control 30

## L

- Load Preset 33
- Local Preference 17
- Local Preference File 17
- Luminance 25
- LUT File 32
- LUT File Format Specification 32
- LUT Gain and Offset Controls 31
- LUT Type 31

## M

- macOS Installations 12
- Main App 29
- Maximum Content Light Level (CLL) 25
- Maximum Frame Average Light Level (FALL) 26

## O

- On Checkbox 28
- Output Control Tab 29
- Output Icons 15
- Overview 5

## P

- Pixel Format 22
- Playback Monitor Tab 28
- Power Connection Status LED 8
- Power Requirements 12
- Power Supply
  - External 10
- Power Supply Module 10
- Preference 17
- Preference File Location
  - Default Global 17
- Preset
  - Delete 33
  - Load 33
  - Save 33
- Preset Files Storage Location 16, 33
- Presets 16
- Presets Screen 33
- Primary Format 15, 21
- Progressive Format 26
- Protocol 23

## R

- Reset to Default 34
- Restart Services
  - Control Panel 16
- RGB Range 22, 24

## S

- Save Preset 33
- SDI Output Screen 22
- Snapshot 33
- Software 6
- Source Gain 28
- System Requirements 7
- System Test 6

## T

- Test Pattern 20
- Third Party Plugins 7
- Thunderbolt 9
- Transfer 25
- Transferring Saved Presets 33

## U

- Unpacking T-TAP 11
- Updating T-TAP Firmware 13
- Uploading Custom User LUT file 32
- Utilities 6

## V

- VANC Checkbox 26
- Video Format (Primary) 21
- Video Setup Screen 26
- Video Signal Formats 5