

# Dante AV 4K Series

4K/UHD SDI/HDMI to Dante AV Ultra Transmitter  
and  
Dante AV Ultra to 4K/UHD SDI/HDMI Receiver



## Installation and Operation Guide

# Notices

---

## Trademarks

---

AJA® and Because it matters.® are registered trademarks of AJA Video Systems, Inc. for use with most AJA products. AJA™ is a trademark of AJA Video Systems, Inc. for use with recorder, router, software and camera products. Because it matters.™ is a trademark of AJA Video Systems, Inc. for use with camera products.

Corvid Ultra®, Io®, Ki Pro®, KONA®, KUMO®, ROI® and T-Tap® are registered trademarks of AJA Video Systems, Inc.

AJA Control Room™, Science of the Beautiful™, TruScale™, V2Analog™ and V2Digital™ are trademarks of AJA Video Systems, Inc.

All other trademarks are the property of their respective owners.

## Copyright

---

Copyright © 2026 AJA Video Systems, Inc. All rights reserved. All information in this manual is subject to change without notice. No part of the document may be reproduced or transmitted in any form, or by any means, electronic or mechanical, including photocopying or recording, without the express written permission of AJA Video Systems, Inc.

## Contacting AJA Technical Support or Sales

---

Please have all pertinent information at hand prior to contacting AJA support or sales.

Support Telephone: +1-530-271-3190

Support Website: <https://www.aja.com/support/contact>

Support Email: [support@aja.com](mailto:support@aja.com)

Sales Email: [sales@aja.com](mailto:sales@aja.com)

Shipping Address: AJA Video Systems  
180 Litton Drive  
Grass Valley, CA 95945, USA

# Contents

---

Notices . . . . .	2
Trademarks . . . . .	2
Copyright . . . . .	2
Contacting AJA Technical Support or Sales . . . . .	2
<b>Chapter 1 – Introduction . . . . .</b>	<b>5</b>
Overview . . . . .	5
Dante AV Ultra . . . . .	5
Dante Audio . . . . .	5
Features . . . . .	5
High Quality and Precision . . . . .	5
Convenient Control . . . . .	6
Compatibility . . . . .	6
JPEG 2000 Video Codec . . . . .	6
Video Transport & Expected Bandwidth . . . . .	6
HDR Workflow Support . . . . .	7
I/O Connections . . . . .	7
Dante AV 4K-T Connectors . . . . .	7
Dante AV 4K-R Connectors . . . . .	8
LED Indicators . . . . .	9
Dante AV 4K-T and Dante AV 4K-R Front Panel LEDs . . . . .	9
Dante AV 4K-T Rear Panel LEDs . . . . .	10
Dante AV 4K-R Rear Panel LEDs . . . . .	11
<b>Chapter 2 – Installation . . . . .</b>	<b>13</b>
Prior to Use . . . . .	13
Unpacking . . . . .	13
Physical Setup . . . . .	13
Base and Surface Mount Installation . . . . .	13
Rack Mount Installation . . . . .	14
System Setup . . . . .	14
Cabling . . . . .	14
Optional Equipment to Prepare . . . . .	15
Other AJA Products to Use with Dante AV 4K-T and 4K-R . . . . .	15
Other Equipment . . . . .	16
Required Software . . . . .	16
Dante Controller Software (MacOS or Windows) . . . . .	16
Installing Dante Controller . . . . .	17
<b>Chapter 3 – Operation . . . . .</b>	<b>18</b>
Preparation . . . . .	18
Power Up . . . . .	18
Power up a Dante AV 4K-T or Dante AV 4K-R . . . . .	18
Important Guidelines for Using the Ethernet Ports . . . . .	18
Discovery and Auto-Configuration . . . . .	19
Automatic Network Configuration . . . . .	19
Automatic Discovery . . . . .	19
Launching Dante Controller . . . . .	20
Using Dante Controller . . . . .	20
Introduction to the Dante Controller Application . . . . .	20
Network View . . . . .	21
Device View . . . . .	23
Renaming Dante AV 4K-T & 4K-R Devices . . . . .	32
Already Familiar with Dante Controller for Audio? . . . . .	35
Video Channels are Routed like Audio Channels . . . . .	35
Flows . . . . .	35
Video Channels are Unicast by Default . . . . .	36
Introduction to Video Multicasting . . . . .	36

Routing for Video Devices . . . . .	37
Unicasting . . . . .	37
Multicasting . . . . .	37
Audio Routing . . . . .	41
Infrared: IR-Over-IP . . . . .	42
Advantages of IR-Over-IP . . . . .	42
Implementing IR-Over-IP . . . . .	42
Serial Control over IP . . . . .	44
Advantages of Serial Control Over IP . . . . .	44
Implementing Serial Control Over IP . . . . .	44
USB over IP . . . . .	46
Advantages of USB Over IP . . . . .	46
Implementing USB Over IP . . . . .	46
User Presets . . . . .	48
What can I do with Presets? . . . . .	48
When are Presets Helpful? . . . . .	48
Device Roles . . . . .	48
Saving Presets . . . . .	49
Applying Presets . . . . .	49
Dante Updater Application . . . . .	52
Introduction . . . . .	52
Internet Requirements . . . . .	52
Dante Network Requirements. . . . .	52
Launch Dante Updater on Windows . . . . .	52
Launch Dante Updater On MacOS . . . . .	53
Launch Dante Updater from the Main Toolbar . . . . .	53
Update Dante AV 4K-T & 4K-R Devices. . . . .	53
Dante Updater User Interface Main Tabs . . . . .	57
<b>Chapter 4 – Interoperability . . . . .</b>	<b>60</b>
Dante Applications for PC or Mac . . . . .	60
Dante Controller . . . . .	60
Dante Domain Manager . . . . .	60
Dante Studio . . . . .	60
Dante Via . . . . .	60
Dante Virtual Soundcard . . . . .	61
Third Party Software Applications. . . . .	61
<b>Chapter 5 – Troubleshooting. . . . .</b>	<b>62</b>
Troubleshoot Using the Dante AV 4K-T and 4K-R LEDs . . . . .	62
Troubleshoot Using the Dante Controller Application . . . . .	62
Automatic Notification of Device Errors. . . . .	62
On-Screen Warning and Error Indicators . . . . .	62
Computer Configuration. . . . .	64
Network Configuration. . . . .	64
Troubleshooting Dante IP Address Configuration . . . . .	65
Troubleshooting Switch Configuration and Cabling. . . . .	66
<b>Appendix A – Specifications . . . . .</b>	<b>68</b>
Dante AV 4K Tech Specs . . . . .	68
<b>Appendix B – Safety and Compliance . . . . .</b>	<b>72</b>
<b>Warranty and Liability Information . . . . .</b>	<b>79</b>
Limited Warranty on Hardware. . . . .	79
Limitation of Liability . . . . .	79
Governing Law and Language; Your Rights . . . . .	79
<b>Software License Agreement . . . . .</b>	<b>80</b>
<b>Index. . . . .</b>	<b>83</b>

# Chapter 1 – Introduction

---



## Overview

---

The AJA Dante AV 4K-T and 4K-R devices encode and decode video and audio streams to and from the Dante AV Ultra IP video protocol, JPEG 2000 video codec, simplifying AV signal delivery while providing an efficient way to transmit audio and video signals in sync between a wide range of devices.

Building on years of robust IP audio networks, AJA Dante AV encoders and decoders enable an easy path to upgrade your existing Dante audio network to deliver high-quality visually lossless video up to 4K/UltraHD for delivery across 1 GigE networks. AJA also offers the OG-DANTE-12GAM, an OpenGear 12G-SDI/ Dante 64-Channel audio embedder/disembedder card. Now you have a powerful way to create a video and audio Dante network with high quality, precision sync with the new Dante AV 4K-T and 4K-R Dante AV Ultra devices.

## Dante AV Ultra

---

AJA's Dante AV 4K-T and Dante AV 4K-R devices support the Dante AV Ultra standard. Dante AV Ultra delivers up to 4Kp60 at sub frame latency for the most demanding applications while still running on 1Gbps networks.

## Dante Audio

---

Dante audio allows uncompressed, multi-channel, low latency 24-bit, 48 kHz PCM24 digital audio to be distributed across a switched Ethernet network using standard TCP/IP protocols while meeting the stringent quality requirements of professional audio. The AJA Dante AV 4K-T and Dante AV 4K-R devices provide an attractive option for integration of video and audio devices into the Dante world.

## Features

---

### High Quality and Precision

---

- Dante AV Ultra video using a network efficient JPEG 2000 codec.
- Dante support – allows 12G-SDI and 4K HDMI video and 8 channel embedded audio support to and from the Dante ecosystem.
- Fully time-aligned and separately routable audio and video streams.

## Convenient Control

---

- Unified control of audio and video using Dante Controller.
- Fully validated implementation of HDCP 2.2 over IP.
- Easy control of remote devices via USB HID, serial, and IR over IP.
- Dante Controller is used to route the audio and video paths. It is also used for all Dante AV network status and configuration.
- Unique and especially useful KVM capability.

## Compatibility

---

- Dante AV works with cost-effective 1Gbps networks.
- Instant compatibility with over 3,000 existing Dante-enabled audio products.
- Compatible with a range of additional optional Dante Software from Audinate including Dante Studio\*, Dante Via\*, Dante Virtual Soundcard\* and Dante Domain Manager\*.
- Significant Interoperability with other 3rd party video software.

*NOTE:* \*See <https://www.audinate.com/products>

## JPEG 2000 Video Codec

---

AJA's Dante AV 4K-T and Dante AV 4K-R devices implement JPEG 2000\*. JPEG 2000 was selected as the video coding standard for digital cinema in 2004. It supports:

- Lossy and lossless coding
- Up to 16384 components
- Bit depth up to 38 bits/sample
- Terapixel images
- Resolution and quality scalability
- Progressive decoding and sub-frame latency
- Region-of-interest accessibility

See <https://jpeg.org/jpeg2000/> for further information.

## Video Transport & Expected Bandwidth

---

Dante video is optimized to run on Gigabit Ethernet and has a bandwidth cap of 700 Mbps. Dante AV 4K-T units are shipped with the default setting set to 250 Mbps. We recommend setting this in the range of 150-250 for HD signals and in the range of 400-500 for 4K/UHD signals.

Video bandwidth is impacted by the following parameters:

- Resolution
- Frame rate
- Chroma sampling
- Color bit depth
- Compression codec used
- Content shown

Dante video flows must be Multicast if video is sent to more than one destination.

*NOTE:* See "[Multicasting](#)" on page 36.

## HDR Workflow Support

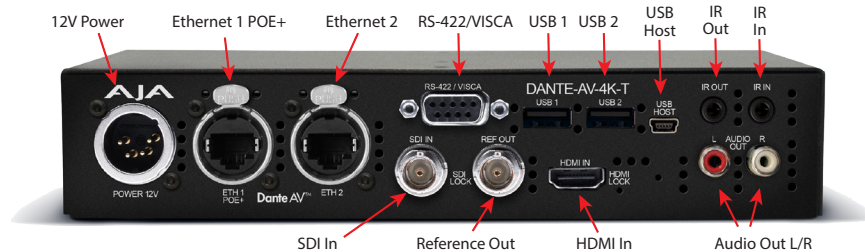
- The Dante AV 4K-T supports HDR HLG and PQ (HDMI: RGB & YUV /SDI: YUV Only).
- The Dante AV 4K-R is now capable of receiving these signals and outputting them to both HDMI and SDI outputs.
- Video Output Control allows the user to choose Auto, SDR, HLG or PQ.
- Colorimetry can be set between Auto, BT.709 or BT.2020.

NOTE: See "HDR Support for UHD 59.94 HLG on Dante AV 4K-T" on page 26 and "HDR Support for UHD 29.97 PQ on Dante AV 4K-R" on page 30.

## I/O Connections

### Dante AV 4K-T Connectors

Figure 1. Rear View of Dante AV 4K-T (Transmitter) Connectors



#### Power

- 12VDC, DIN-4 connector

#### Ethernet 1

- POE (+) on Primary Ethernet port
- 1 x Neutrik etherCon RJ45 Connector
- 1 Gbps (Dante AV & POE+)

#### Ethernet 2\*

- 1 x Neutrik etherCon RJ45 Connector
- Second device to be connected to the Dante AV switch without having to run a second ethernet cable. This is useful for hooking up a Dante audio only device, or for connecting a remote laptop to a device in order to have access to Dante Controller or run another Dante software application.

NOTE: \*This is not for use as a Secondary Dante Network.

#### SDI In

- 1x 12G-SDI input
- YCbCr 4:2:2 10-bit
- 8 channel embedded audio support from SDI input

#### Reference Out

- BNC Ref output connector (For future use)

## HDMI In

- 1x HDMI 2.0 input: RGB, YCbCr, 4:4:4, 4:2:2, 8-bit, 10-bit, & 12 bit
- 8 channel embedded audio support

**NOTE:** For specific details and limitations, see *AJA Dante AV-4K and 4K-R Video Formats* found at <https://www.aja.com/products/dante-av-ultra#support>.

## Serial

- 1 x DB-9 RS-422/ VISCA Serial Port

## USB

- 2 x USB 2.0 Type A Connector
- 1 x USB-Mini Host connector

## IR over IP

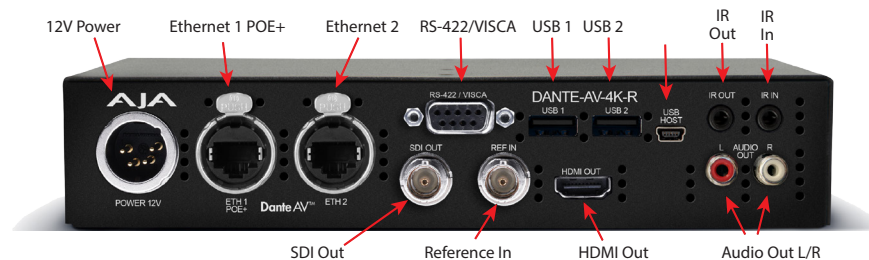
- 3.5mm IR Out and IR In jacks for IR over IP

## Audio Out

- Analog RCA Audio Monitor Outputs

## Dante AV 4K-R Connectors

*Figure 2. Rear View of Dante AV 4K-R (Receiver) Connectors*



## Power

- 12VDC - DIN-4 connector

## Ethernet 1

- POE (+) on Primary Ethernet port
- 1 x Neutrik etherCon RJ45 Connector
- 1 Gbps (Dante AV & POE+)

## Ethernet 2\*

- 1 x Neutrik etherCon RJ45 Connector
- Second device to be connected to the Dante AV switch without having to run a second ethernet cable. This is useful for hooking up a Dante audio only device, or for connecting a remote laptop to a device in order to have access to Dante Controller or run another Dante software application.

**NOTE:** \*This is not for use as a Secondary Dante Network.

## SDI Out

- 1x 12G-SDI Output
- YCbCr 4:2:2 10-bit
- 8 channel embedded audio support

#### Reference In

---

- BNC Ref input for External Gen Lock support.

#### HDMI Out

---

- 1x HDMI 2.0 output
- RGB, YCbCr, 4:4:4, 4:2:2, 8-bit, 10-bit, & 12 bit
- 8 channel embedded audio support

**NOTE:** For specific details and limitations, please see *AJA Dante AV-4K and 4K-R Video Formats* found at <https://www.aja.com/products/dante-av-ultra#support>.

#### Serial

---

- 1 x DB-9 RS-422/ VISCA Serial Port

#### USB

---

- 2 x USB 2.0 Type A Connector
- 1 x USB-Mini Host connector

#### IR over IP

---

- 3.5mm IR In and IR Out jacks for IR over IP

#### Audio Out

---

- Analog RCA Audio Monitor Outputs

## LED Indicators

---

### Dante AV 4K-T and Dante AV 4K-R Front Panel LEDs

---

*Figure 3. Dante AV 4K-T and Dante AV 4K-R Front Panel LEDs*



#### Power

---

- Single-color Green LED
  - Green indicates power is supplied to the device

#### Codec

---

- Single-color Green LED
  - Green indicates the codec is active

## System: Dante System Status

---

- Tri-color LED
  - Solid green – All OK, sync achieved
  - Amber – Booting up, awaiting sync
  - Red – System failed to boot correctly
  - Off – No power

## Status: Dante Software Status

---

- Tri-color LED
  - Solid green – Software running
  - Blinking green – Identify function activated
  - Solid or blinking red – Software fault or exception
  - Off – No power

## Sync: Clock Synchronization Status

---

- Tri-color LED
  - Solid green – Dante network clock follower, sync achieved
  - Blinking green – Dante network clock leader
  - Amber – Syncing in progress
  - Red – Error achieving sync
  - Off - No power

## HDCP: Status of HDCP on the HDMI Input or Output

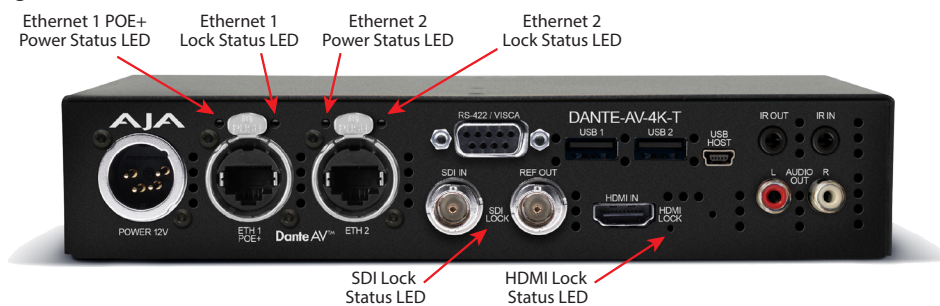
---

- Tri-color LED
  - Solid green - non-HDCP unprotected video sync or source detected
  - Blinking green – HDCP protected content detected
  - Solid red – Invalid non-HDCP video sync or source
  - Blinking red – Failed HDCP negotiation
  - Blinking Amber – HDCP negotiation in progress
  - Off - No power

## Dante AV 4K-T Rear Panel LEDs

---

*Figure 4. Dante AV 4K-T Rear Panel LEDs*



## SDI Lock Status

---

- Green means the receivers are locked (though not necessarily a supported video format)
- Off means not locked/present

## HDMI Lock Status

- Green means the receivers are locked (though not necessarily a supported video format)
- Off means not locked/present

## Ethernet 1 Link Status LED

- Follows the standard ethernet lighting convention for Link LED\*

## Ethernet 1 Activity Status

- Follows the standard ethernet lighting convention for Status LED\*

## Ethernet 2 Link Status LED

- Follows the standard ethernet lighting convention for Link LED\*

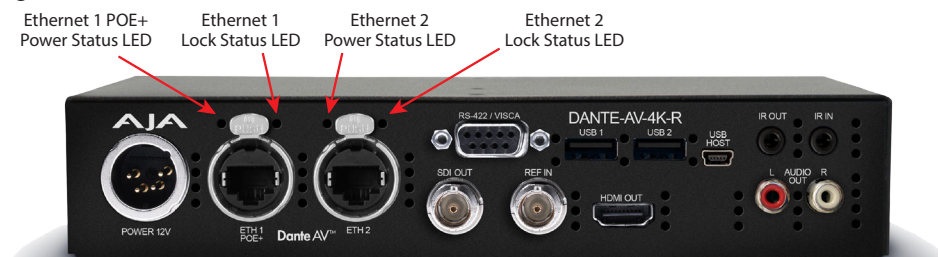
## Ethernet 2 Activity Status

- Follows the standard ethernet lighting convention for Status LED\*

**NOTE:** *\*Blinking ethernet light means that the port is transmitting information  
Solid light means a connection between the devices  
No light means that there is no current connection  
Amber color is Gigabit connection, Green color is 100-Mbps connection*

## Dante AV 4K-R Rear Panel LEDs

**Figure 5. Dante AV 4K-R Rear Panel LEDs**



## Ethernet 1 Link Status LED

- Follows the standard ethernet lighting convention for Link LED\*

## Ethernet 1 Activity Status

- Follows the standard ethernet lighting convention for Status LED\*

## Ethernet 2 Link Status LED

- Follows the standard ethernet lighting convention for Link LED\*

## Ethernet 2 Activity Status

- Follows the standard ethernet lighting convention for Status LED\*

**NOTE:** *\*Blinking ethernet light means that the port is transmitting information  
Solid light means a connection between the devices  
No light means that there is no current connection  
Amber color is Gigabit connection, Green color is 100-Mbps connection.*

# Chapter 2 – Installation

---

## Prior to Use

---

### Unpacking

Unpack the Dante AV 4K-T or Dante AV 4K-R product you received and make sure that all of the items listed below in the Parts List are included. If any items are missing or damaged, contact your sales representative or AJA directly.

### Parts List

Quantity	Description
1	Dante AV 4K-R or Dante AV 4K-T unit in ESD bag
1	120/240 AC to 12v DC 4-pin XLR Power Adapter
1	IR emitter on 3.5 mm cable
1	IR receiver on 3.5 mm cable
1	AJA Shipping Support Card

## Physical Setup

---

### Base and Surface Mount Installation

- The units may be attached using screws, Velcro or zip-ties.
- Make sure to mount the units in a way that maintains sufficient ventilation around them.

Figure 6. DO NOT STACK Dante AV 4K-T and/or Dante AV 4K-R units



**WARNING:** Do not stack multiple units directly on top of each other. This could cause overheating.

## Rack Mount Installation

- For either single-unit or double-unit rack installations, AJA's IOX-RM 1RU rack shelf is an available custom solution for the Dante AV 4K-T and 4K-R devices.
- The units are attached to the shelf using four (4) #4-40 flat head screws each on the left and/or right side of the shelf using the countersunk holes provided.

Figure 7. Single-unit mounting example using the IOX-RM 1RU rack shelf



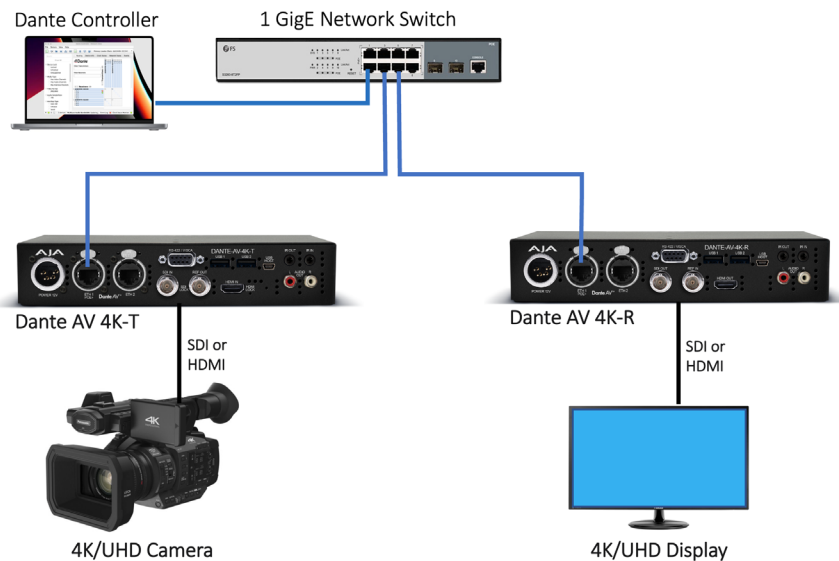
Figure 8. Dual-mounting example using the IOX-RM 1RU rack shelf



**WARNING:** Minimal torque is needed to secure the unit to the shelf. Over tightening the screws will damage the unit.

## System Setup

Figure 9. A 4K Video-over-IP system using a Dante AV 4K-T and Dante AV 4K-R



## Cabling

1. Connect HDMI cabling (if desired) to the Rear Panel of a Dante AV 4K-T for an HDMI Camera, and/ or to a Dante AV 4K-R for an HDMI Display.
2. Connect the BNC cables for reference (if desired) to the Rear Panel of a Dante AV 4K-T Reference OUT, or to a Dante AV 4K-R for reference IN.
3. Connect SDI cabling (if desired) to the Rear Panel of Dante AV 4K-T for a Camera, and/or to a Dante AV 4K-R for a Display.
4. Connect the Ethernet cabling to an appropriate Managed Network POE+ or POE++ Switch.
5. Connect USB 1 and USB 2 cabling to (optional) USB keyboard & mouse (if desired).

6. Connect USB HOST to a host computer (if desired).
7. Connect RCA audio cables (if desired).
8. Connect IR devices (if any).
9. Connect the approved DC Power Supply if not using POE+ for power.

**NOTE:** Refer to "[Dante AV 4K-T Connectors](#)" on page 7 and "[Dante AV 4K-R Connectors](#)" on page 8 to identify the input and output signal connectors.

**NOTE:** The Secondary Ethernet port is for future use. Dante Controller will not function correctly if both the Primary and Secondary Ethernet Ports are connected to the same network switch.

## Optional Equipment to Prepare

---

### Other AJA Products to Use with Dante AV 4K-T and 4K-R

---

#### Digital Video Playback and Recording Devices

---

AJA products such as the [Ki Pro Ultra 12G](#) or [Io 4K Plus](#) may be used as a playback device when connected to the Dante AV 4K-T or used as a recording device when connected to a Dante AV 4K-R.

#### Streaming

---

A [HELO Plus](#) can be attached to the SDI or HDMI output of a Dante AV 4K-R for advanced H.264 streaming to the Internet.

#### Video Signal Enhancement

---

The [FS-HDR](#) or [ColorBox](#) may be used for color enhancement and format cross-conversion with a Dante AV 4K-T and/or Dante AV 4K-R.

#### Other AJA Dante Equipment

---

The Dante AV 4K-T and 4K-R series devices can seamlessly integrate into a Dante network also using one or more [OG-Dante-12GAM](#) cards to provide additional audio embedding/disembedding.

Users already familiar with AJA's OG-Dante-12GAM will feel comfortable in expanding their network into the Dante Video ecosystem, while continuing to use the same familiar Dante Controller.

The primary considerations when adding Dante AV 4K-T and Dante AV 4K-R devices onto a previously audio-only Dante network, is the speed and total device loading of the network, and the quality and type of ethernet switches that are used.

**NOTE:** See <https://www.aja.com/products/og-dante-12gam#support> and also <https://www.aja.com/products/og-dante-12gam> on the AJA website.

## Other Equipment

---

### Cameras

---

Suitable SDI and/or HDMI cameras may be connected to the Dante AV 4K-T unit.

### TVs or Monitors

---

Suitable SDI or HDMI monitor displays or HDTVs for confidence monitoring may be connected to the Dante AV 4K-R unit.

### Network Switches, Routers and Cabling Configuration

---

The network configuration must be compatible with the requirements of Dante AV.

**NOTE:** See <https://www.audinate.com/learning/technical-documentation>

## Required Software

---

### Dante Controller Software (macOS or Windows)

---

Dante Controller must be installed on at least one PC or Mac on the Dante network in order to control and route Dante video. Dante Controller software can be downloaded from the Audinate website: [www.audinate.com](http://www.audinate.com).

**NOTE:** See "[Available Dante Video Training by Audinate](https://www.audinate.com/learning/technical-documentation)" found at <https://www.audinate.com/learning/technical-documentation>

### Hardware Component Requirements

---

- Processor 1GHz or better
- Memory 512Mbytes of RAM
- Network Standard wired Ethernet network interface (100Mbps or Gigabit)

### Windows

---

- Hardware Component Requirements (shown above)
- Operating System Windows 10 or 11
- Hardware 64-bit architecture

### macOS

---

- Hardware Component Requirements (shown above)
- Operating System macOS 10.15, 11, 12, 13, 14\*
- Hardware Intel or Apple silicon

**NOTE:** \*Current at the time of publication. Check the Audinate site for updates.

# Installing Dante Controller

---

## Downloading Dante Controller

---

Dante Controller is available for download from Audinate's website. To download a copy of Dante Controller:

1. Go to the Audinate website: [www.audinate.com](http://www.audinate.com).
2. Navigate to Products > Dante Controller.
3. Under 'Download', choose your operating system.
4. Click the red download button. This will take you to the appropriate Dante Controller release page for your operating system (Windows or macOS).
5. You may be asked to create or log into an Audinate user account.
6. Click the link under 'File downloads' to download the Dante Controller installer.

## Installing Dante Controller on Windows

---

Once you have downloaded the self-installing Dante Controller file, navigate to the directory where you have downloaded it (e.g. Desktop). To install:

1. Ensure you are logged on to your PC as an administrator.
2. Navigate to and double-click the Dante Controller installer file.
3. Read the license agreement. If you agree to the terms, select the 'I agree' check box and click Install. If you do not agree to the terms, click Close.
4. Confirm / acknowledge any Windows security prompts that are displayed.
5. Dante Controller will then be installed. Dante Controller will be added to the start menu, under 'Audinate'.

## Installing Dante Controller on macOS

---

To install Dante Controller on macOS:

1. Double-click the Dante Controller .dmg file. A drive icon will appear on your Desktop Finder window.
2. Double click on this to open.
3. Double click the Dante Controller .pkg. This will run the installer.
4. Read the license text, and if you accept the terms of the agreement, click Agree. If you do not accept these terms, click Disagree to terminate the installation.

# Chapter 3 – Operation

---

## Preparation

---

Ensure that all required preparations have been completed before attempting to operate your AJA Dante AV 4K-T and/or Dante AV 4K-R device.

*NOTE:* See "[Installation](#)" on page 12.

## Power Up

---

### Power up a Dante AV 4K-T or Dante AV 4K-R

---

- Attach the included 12V DC Power Supply; or
- Provide power over ethernet to the Ethernet 1 connector, POE+ compliant.

*NOTE:* Be sure to follow the Important Guidelines below.

### Important Guidelines for Using the Ethernet Ports

---

#### When Using 12V DC Power Adapter

---

- ETH1 (Ethernet 1) is the primary DanteAV network connection.
- ETH2 (Ethernet 2) is a second device to be connected to the Dante AV switch without having to run a second ethernet cable. This is useful for hooking up a Dante audio only device, or for connecting a remote laptop to a device in order to have access to Dante Controller or run another Dante software application. This port should never be connected to the same LAN/VLAN as ETH1.

#### When Using POE+ on Ethernet 1

---

- ETH1 (Ethernet 1) is the primary DanteAV network connection and POE+ connection.
- ETH2 (Ethernet 2) is a second device to be connected to the Dante AV switch without having to run a second ethernet cable. This is useful for hooking up a Dante audio only device, or for connecting a remote laptop to a device in order to have access to Dante Controller or run another Dante software application. This port should never be connected to the same LAN/VLAN as ETH1.

## Discovery and Auto-Configuration

When a Dante-enabled device is connected to an IP/Ethernet network, it will automatically:

1. Configure its IP address
2. Announce itself to allow automatic discovery

Within seconds of a Dante-enabled device connecting to a network, Dante Controller will automatically discover and display the device, allowing you to configure channels and route media.

## Automatic Network Configuration

---

A Dante-enabled device connected to a network will automatically setup its own network configuration, including its IP address.

If the network has a DHCP server, which may be the case for installed networks, it will receive its IP configuration using the standard DHCP protocol.

On a network without a DHCP server, which may be the case for temporary or smaller networks, the Dante-enabled device will automatically assign itself an address using link local protocols, in the same way PCs and printers often do.

Dante devices use DHCP for addressing when available or will auto-assign an IP address in the 169.254.0.0/16 range on the primary network. Dante devices continue to look for a DHCP server even after auto-assigning an IP address. Most Dante devices support static IP addressing.

## Automatic Discovery

---

A Dante-enabled device will announce information about itself to other Dante devices and Dante Controller, including:

- Device name
- Channel names
- Number of channels
- Sample rates and bit depths

This information can be seen when viewing a device on Dante Controller, and allows Dante devices to determine compatibility with other devices, such as compatible sample rates to allow media to be routed.

## Launching Dante Controller

---

1. Launch the Dante Controller application on your PC or Mac.
2. Establish that Discovery and Auto-Configuration have been successful and devices are seen on the network.

*NOTE: If not successful, see "[Troubleshooting Dante IP Address Configuration](#)" on page 62.*

3. Check to make sure that all of your Dante Controller configurations and settings are as desired, by checking the various tabs in Network and/or Device Views. See the sections which follow below.
4. Verify that your intended video and/or audio signals are being sent and connected\* to the Dante AV 4K-T source device (if any).

*NOTE: \*If not successful, see "[Troubleshooting](#)" on page 60.*

## Using Dante Controller

---

Use the Dante Controller application to set up the audio/video routing between Dante devices, control the audio/video connections in the Dante setup, and move audio and video in real-time over an Ethernet network. Dante Controller is also used for configuring certain network settings and for monitoring network status.

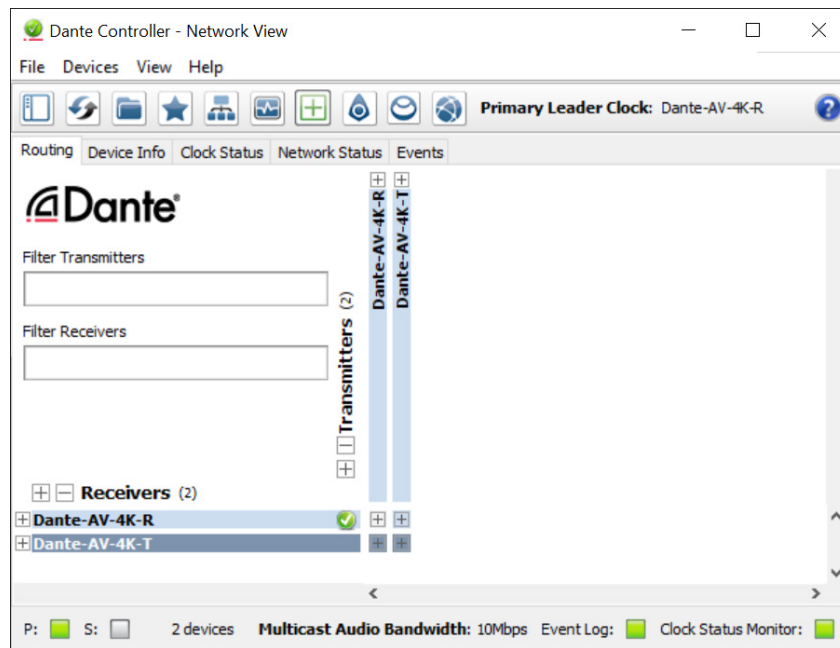
# Introduction to the Dante Controller Application

The Dante Controller application is organized into two main 'views': Network View and Device View. Both views may be open at the same time in their separate windows. Each view has a menu bar, a button toolbar, and several available tabs. In this introductory section we illustrate just one or two tabs for each view.

Below is a basic setup having one AJA Dante AV 4K-T plus one AJA Dante AV 4K-R device as they initially appear after launching Dante Controller. In figure 10 below, the default factory-assigned AJA Dante device names are shown.

*NOTE: In many of the remaining Dante Controller screenshots in this manual, we have renamed the devices with a simpler name. Please see "Rename Device" on page 21 for more information about this.*

Figure 10. Dante Controller application (default Network View)



*NOTE: See the AJA Audinate Dante Controller Guide at <https://www.aja.com/products/dante-av-ultra#support> for more detailed information*

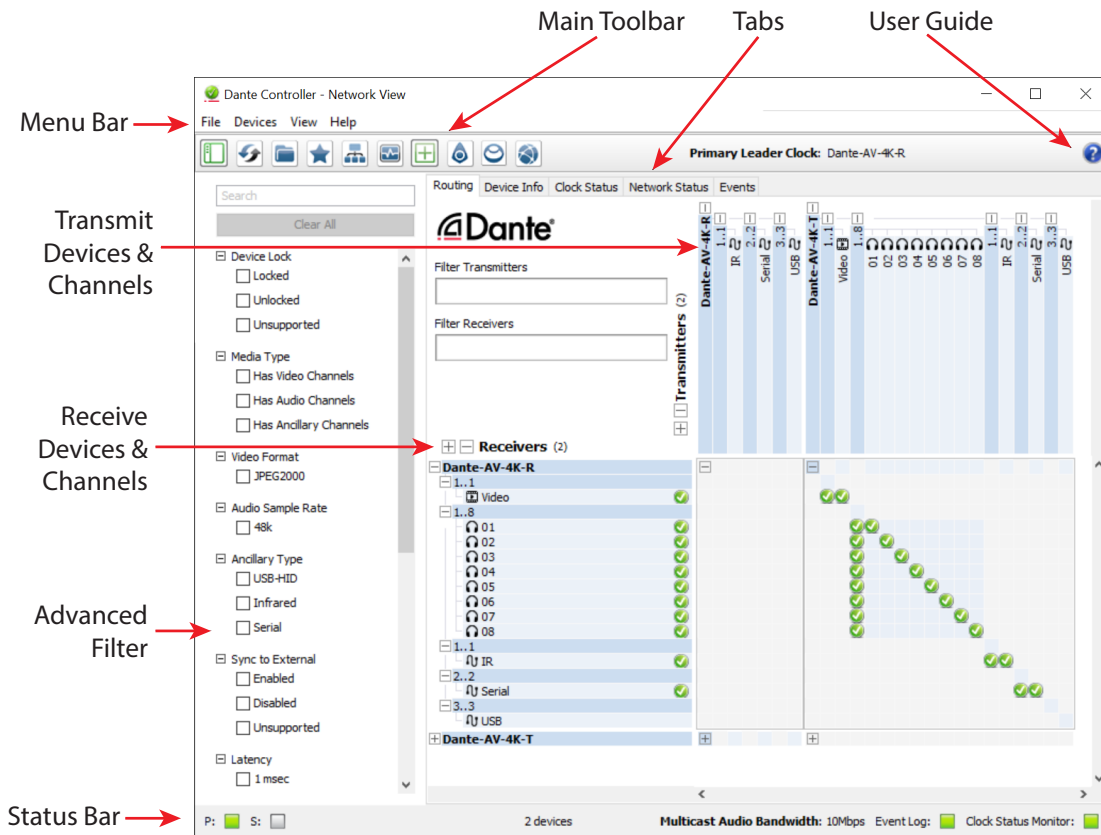
## Network View

### Routing Tab

Below is an expanded form of the Network View's Routing Tab for a two-device setup, highlighting the main user interface elements. The Advanced Filter pane has been opened and Show Channel Groups has been activated, both accomplished by clicking on their respective toggle icons in the main Toolbar.

In this example all available channels of the Dante AV 4K-T are connected to available receive channels of the Dante AV 4K-R. The channel types include one video channel, eight audio channels and three auxiliary channels for IR, Serial and USB peripherals.

Figure 11. Dante Controller Network View user interface



The Routing Tab allows the user to:

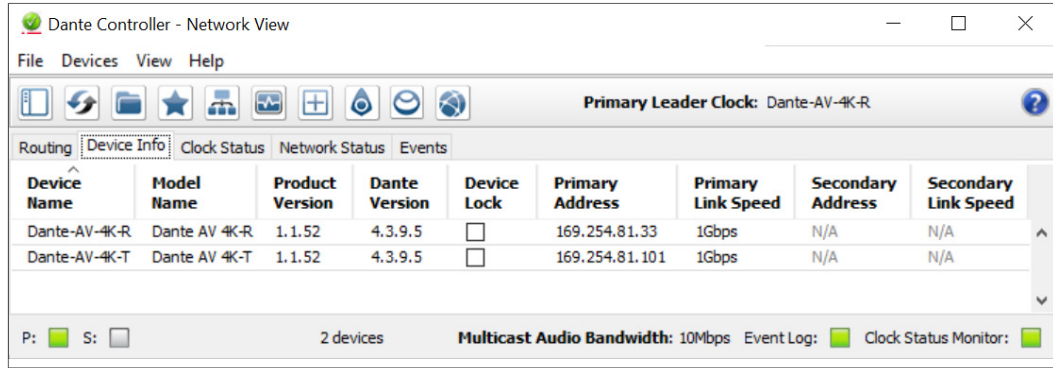
- Route audio, video and auxiliary channels between devices
- Simply click in any cell of the routing 'grid' where a transmit channel and a receive channel intersect, to make a connection between them
- View the status of existing routes
- View multicast bandwidth across the network
- Filter device lists by name, sample rate, latency and other parameters

**NOTE:** See the AJA Audinate Dante Controller Guide at <https://www.aja.com/products/dante-av-ultra#support> for more detailed information

## Device Info Tab

- View all Dante-enabled audio and Dante AV Ultra devices and their channels on the network
- Device Name and Model Name
- Device Clock Status
- Device Product Version and Dante Version
- Device Lock status
- Primary and Secondary IP Addresses
- Primary and Secondary Link Speeds

Figure 12. Network View Device info Tab: all Devices on the Dante Network

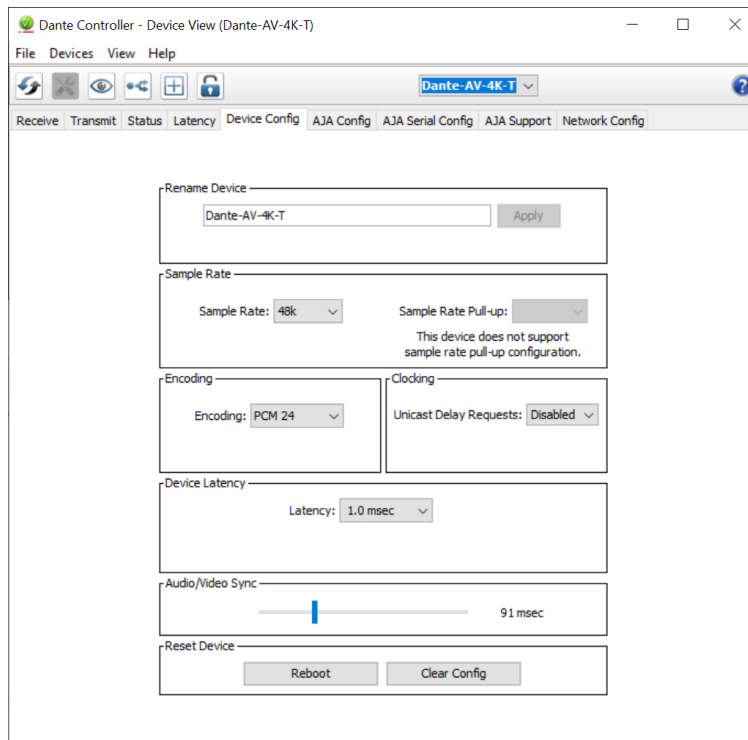


## Device View

### Device Config Tab

- Rename Device
- Sample Rate
- Encoding
- Clocking
- Device Latency - for Dante AV 4K, this will only be useful with the 4K-R.
- Audio/Video Sync - If the lip sync or the AV sync looks off, then use this slider to make adjustments.
- Reset Device (Reboot).

Figure 13. Device View: Device Config Tab (Dante AV 4K-T)



## AJA Config Tab

Use the AJA Config Tab to adjust and save audio and video controls for the Dante AV 4K-T and 4K-R units, and to view status and other information.

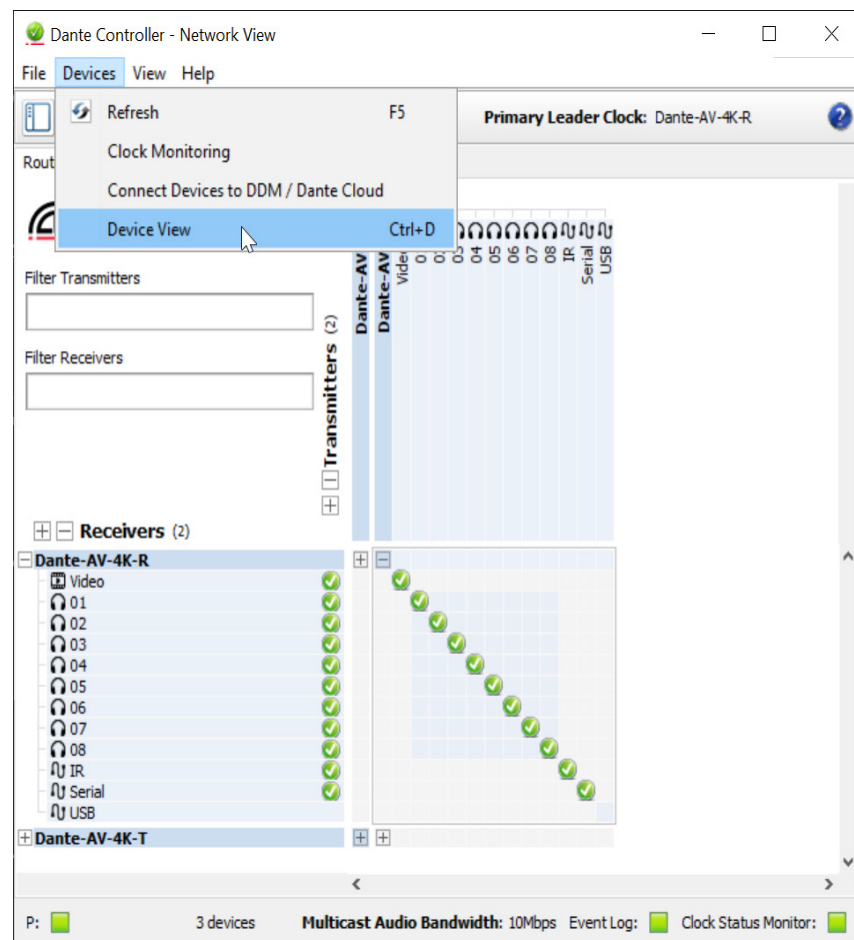
The AJA Config tab appears differently for Dante AV 4K-T vs. Dante AV 4K-R devices. Once you have navigated to either unit's AJA Config screen, you can easily switch back and forth between them.

Since this is the primary control window for Dante AV 4K-T and 4K-R devices, we include the exact steps below to open it without any prior experience with Dante Controller.

## Opening AJA Config Tab for Dante AV 4K-T

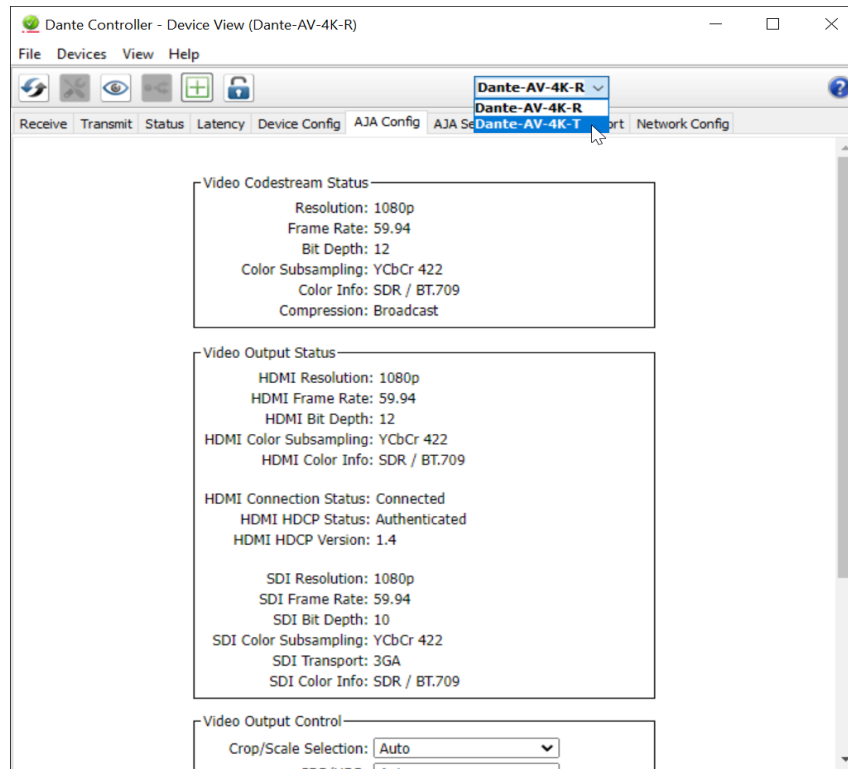
1. Launch Dante Controller. The Network View window opens.
2. Select "Device view" from the Devices drop down menu (Ctrl+D).

Figure 14. Select Device View



3. From the Change Device Menu, select the AJA 4K-T Series device that you would like to configure.

Figure 15. Select the Device



4. In the Device View window that opens, select the AJA Config Tab.  
AJA Config Tab parameter menus for a Dante AV 4K-T are highlighted below:

Figure 16. AJA Config Tab (for a Dante AV 4K-T)

The screenshot shows the AJA Config Tab for a Dante AV 4K-T device. The interface includes several sections:

- Video Input Status:** Shows HDMI Resolution (1080p), HDMI Frame Rate (29.97), HDMI Bit Depth (12), HDMI Color Subsampling (4:2:2(YCbCr)), and HDMI Color Info (PQ / BT.2020). SDI Resolution is 1080p, SDI Frame Rate is 29.97, SDI Bit Depth is 10, SDI Color Subsampling is 4:2:2(YCbCr), SDI Transport is HD, and SDI Color Info is PQ / BT.2020.
- Video Codestream Status:** Shows Resolution (1080p), Frame Rate (29.97), Bit Depth (12), Color Subsampling (4:2:2(YCbCr)), Color Info (PQ / BT.2020), and Compression (Broadcast).
- Force HDMI Input Format:** A dropdown menu set to "Auto".
- Analog Audio Output Config:** An "Audio Selection" dropdown menu set to "ch 1/2".
- Preferred Video Input:** Radio buttons for HDMI and SDI, with SDI selected.
- Compression Settings:** "Compression Profile" set to Broadcast, "Ultra Low Latency" unselected, and "Video Stream Bandwidth Cap." checked and set to 417 Mbps.
- Ref Out Control:** A "Ref Out Format" dropdown menu set to "1920x1080p 30".

Three callout boxes provide additional details:

- Top Callout:** A list of video resolutions and frame rates. The selected option is "1024p60 (1280x1024)". Other options include "1200p60 (1600x1200)", "1200p60 (1920x1200)", and "1200p60 RB (1920x1200) Reduced Blanking".
- Middle Callout:** A list of audio channel selections: "ch 1/2", "ch 3/4", "ch 5/6", and "ch 7/8". The selected option is "ch 1/2".
- Bottom Callout:** A list of video standards and resolutions. The selected option is "1920x1080p 25". Other options include "NTSC 525i 59.94", "PAL 625i 50", "1280x720p 50", "1280x720p 59.94", "1280x720p 60", "1920x1080i 50", "1920x1080i 59.94", "1920x1080i 60", "1920x1080p 23.98", "1920x1080p 24", "1920x1080p 29.97", and "1920x1080p 30".

## Dante AV 4K-T AJA Config Controls

---

**Video Input Status:** The Video Input Status will provide you with various information that is very helpful for integrating these units into a Dante AV workflow to confirm compatibility with other devices. It also will confirm that a valid signal is being sent to the Dante AV-4K-T. When an active signal is being sent to both the HDMI & SDI inputs, the preferred device will be indicated by the bold font of the status information.

**Video Codestream Status:** The Video Codestream Status will display how the signal will be received by the JPEG 2000 Codec. This may or may not match the exact bit depth or color subsampling that is output from the Receiver's Codestream Status or Video Output Status due to the expected behavior of the codec being applied to the passing of the video signal.

**Force HDMI Input** - The Force HDMI Input can be used to force the desired Resolution and Frame rate to the 4K-T if the original source is sending out an undesirable format and the settings can't be changed at the source.

**Analog Audio Output Config** - Select Analog Audio Channels (1/2; 3/4; 5/6; 7/8). The Audio Config allows you to select a pair of audio channels from the eight possible channels of audio from the SDI or HDMI input source (4K-T) or the SDI or HDMI Output (4K-R) that can be monitored from RCA audio output connectors on the device.

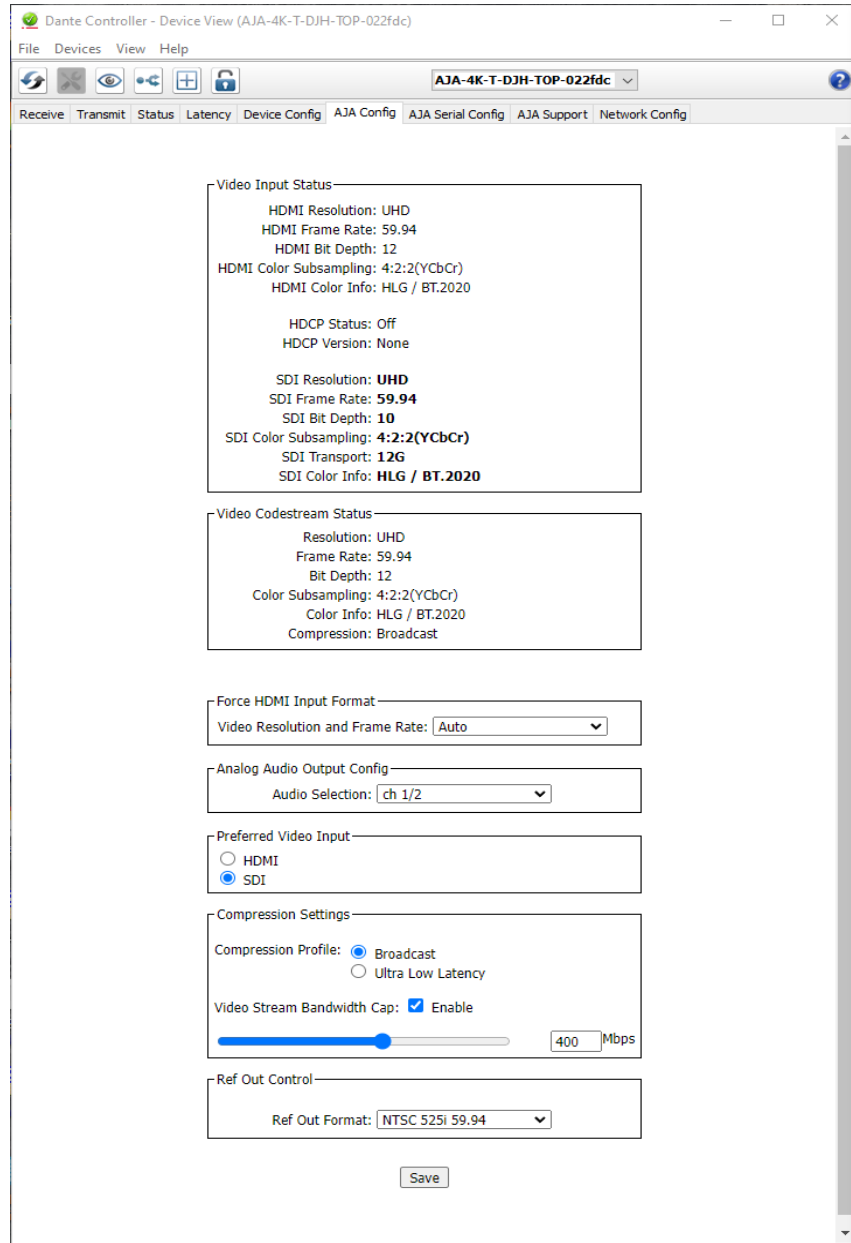
**Preferred Video Input** - (HDMI/SDI) The Preferred Video Input is used to determine which source should be used when both an HDMI and an SDI signal are being inputted into the device. The default will be HDMI unless the user selects SDI or only a valid SDI Input is detected.

**Compression Settings** - The factory default setting is 250Mbps. Dante AV 4K-T Units are shipped with the default setting set to 250 Mbps. We recommend setting this in the range of 150-250 for HD signals and in the range of 400-500 for 4K/UHD signals.

**Ref Out (Reference Out) Control** - Select the video format standard to be used for the BNC Reference Out connector on the Dante AV 4K-T. Choose from NTSC, PAL or HD formats.

# Dante AV 4K-T HDR Support

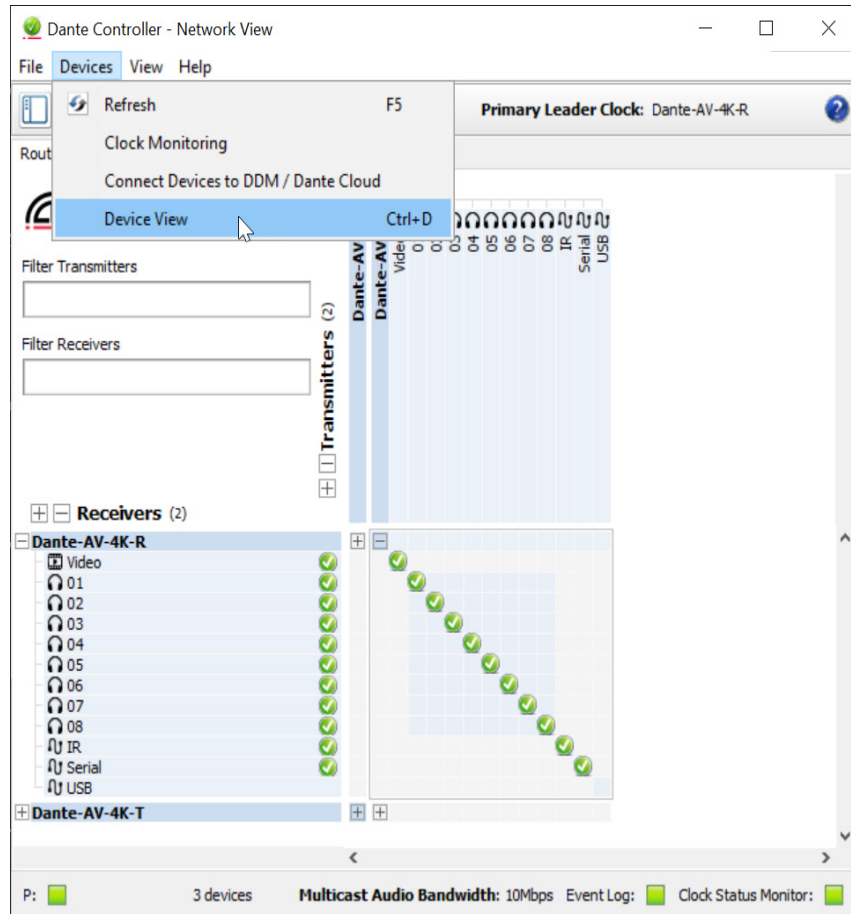
Figure 17. HDR Support for UHD 59.94 HLG on Dante AV 4K-T



## Opening AJA Config Tab for Dante AV 4K-R

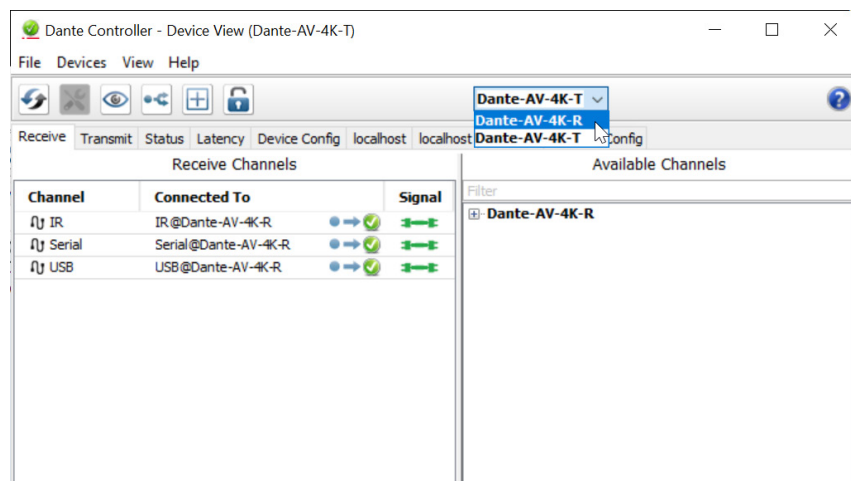
1. Launch Dante Controller. The Network View window opens.
2. Select "Device View" from the Devices drop down menu (Ctrl+D).

Figure 18. Select Device View



3. From the Change Device Menu, select the AJA 4K Series device that you would like to configure.

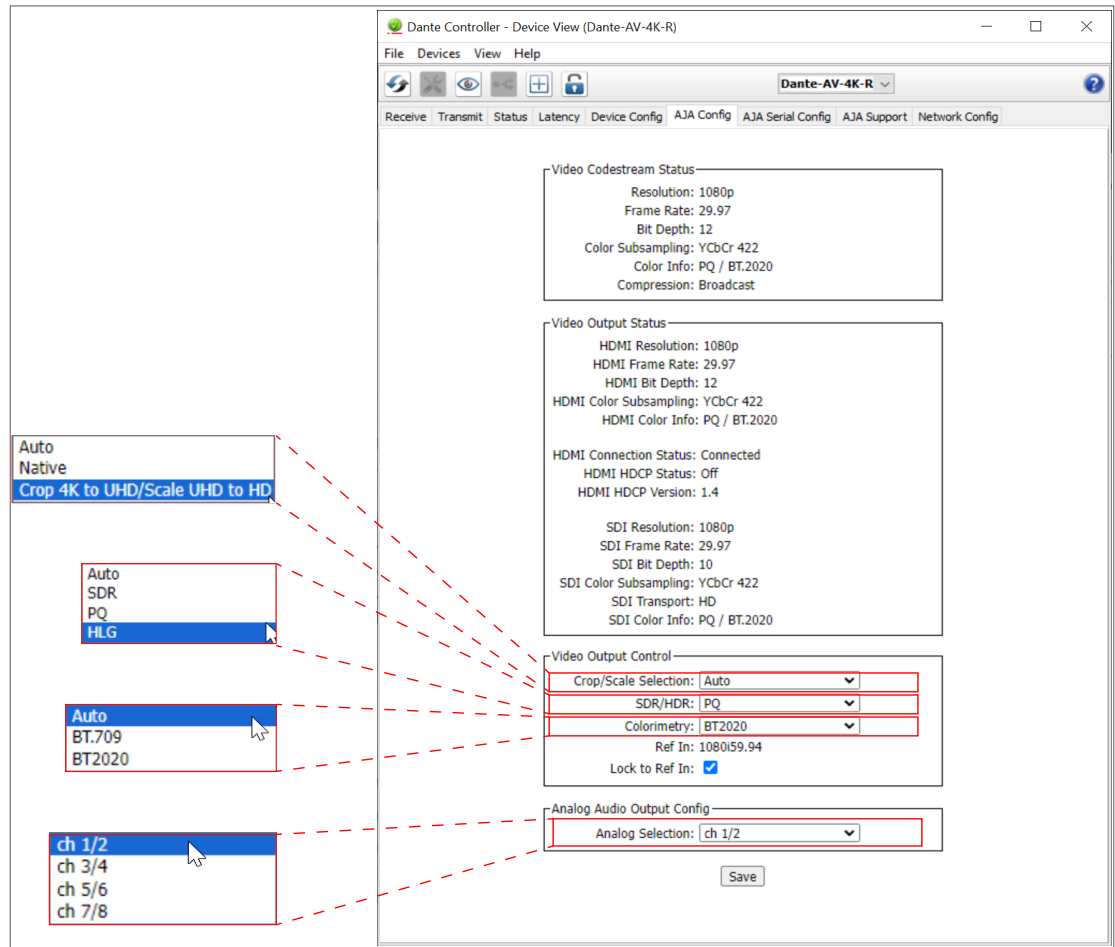
Figure 19. Select the Device



4. In the Device View window that opens, select the AJA Config Tab.

AJA Config Tab parameter menus for a Dante AV 4K-R are highlighted below:

Figure 20. Device View AJA Config Tab (for a Dante AV 4K-R)



## Dante AV 4K-R AJA Config Controls

---

**Video Codestream Status** - The Video Codestream Status will display how the signal will be received by the JPEG 2000 Codec. This may or may not match the exact bit depth or color subsampling that is output from the Receiver's Codestream Status or Video Output Status due to the expected behavior of the codec being applied to the passing of the video signal.

**Video Output Status** - Displays format of HDMI and SDI video signals including Resolution, Frame Rate, Color Space (HDMI/SDI Color Subsampling), Bit Depth and Compression. Displays HDCP status and version. Displays Connection Status.

### **Video Output Control:**

**Crop/Scale Selection** - Select Auto, Native, or Crop 4K to UHD/Scale UHD to HD.

**SDR/HDR** - Default is set to Auto. Select SDR, PQ, or HLG to override HDR Metadata output.

**Colorometry** - May be set to Auto, BT.709 or BT2020.

**Ref In** - Ref in includes support for Dante AV 4K-R 4K (in broadcast mode only.) The checkbox option to select a Reference In will only appear if a Reference signal has been connected to the Ref Input connection on the device. The Reference In signal rate should match the same rate as the incoming video signal. For example a Ref In signal of 1080i59.94 would support raster of video with a 59.94 or 29.97 field rate.

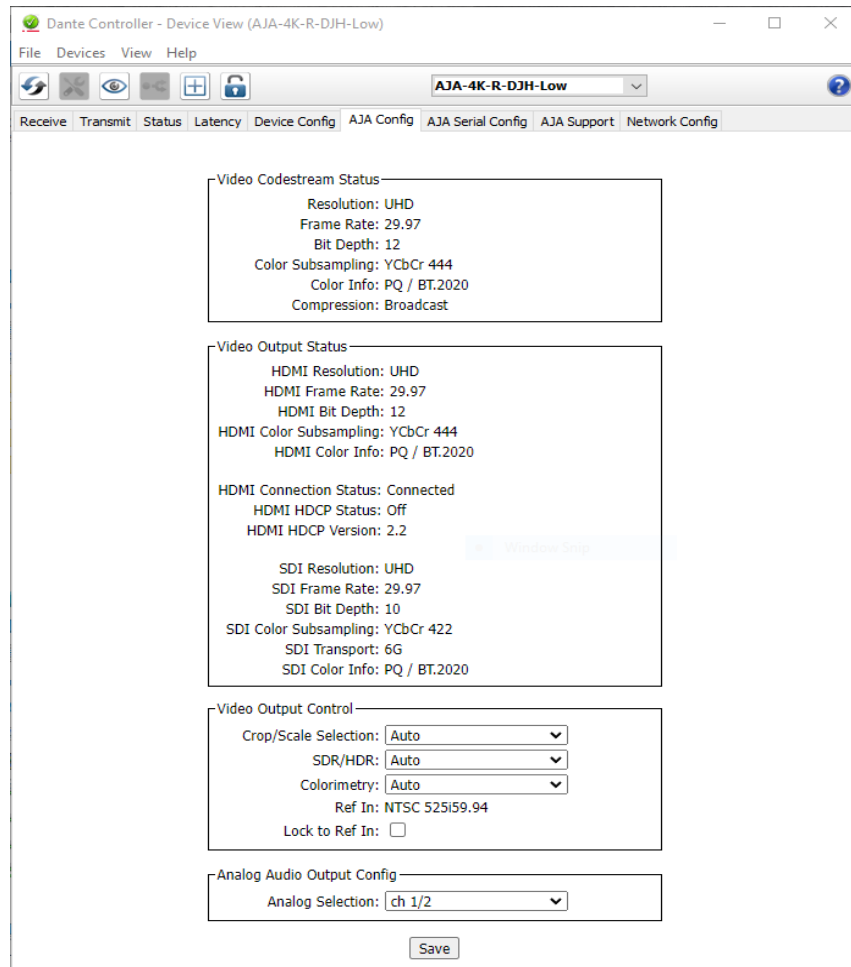
*NOTE: If Ref In is selected and its rate does not match the signal rate, the device will report the following message: "Mismatched Ref In Rate Not Supported."*

*NOTE: Only the Broadcast compression profile is compatible with using the Reference In feature. If the transmitted signal is using the Ultra Low Latency compression profile, the following message will be reported: "ULL Mode Not Supported".*

**Analog Audio Output Config** - Select Analog Audio Channels (1/2; 3/4; 5/6; 7/8). The Audio Config allows you to select a pair of audio channels from the eight possible channels of audio from the SDI or HDMI Output (4K-R) that can be monitored from RCA audio output connectors on the device.

# Dante AV 4K-R HDR Support

Figure 21. HDR Support for UHD 29.97 PQ on Dante AV 4K-R



## Renaming Dante AV 4K-T & 4K-R Devices

When starting to use Dante Controller a good practice is first to rename the Dante AV 4K-T and 4K-R device(s). The factory device names include six digits at the end (taken from the factory-assigned MAC address). If there are many devices on your network, long device names will cause more window pane scrolling.

A Dante AV 4K-T or 4K-R device name can be chosen to fit the device's location and use. A name also can be more compact, which is helpful when there are many devices on the Dante network. Renaming your device(s) before creating connections is a good idea, since doing so later takes a little more care.

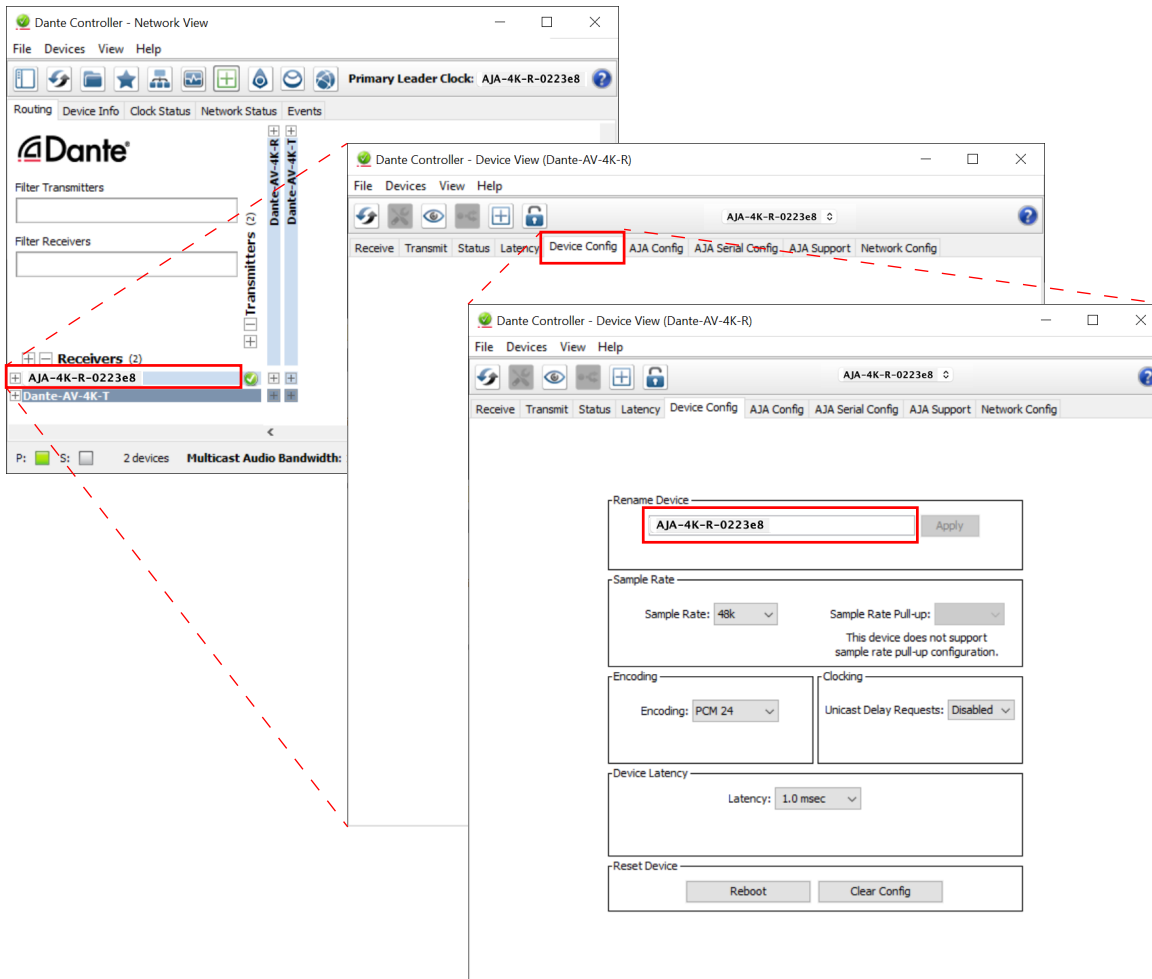
**NOTE:** Renaming a Dante device will 'break' (essentially, delete) all existing routes to and from that device (if any). Therefore if routes do exist prior to renaming, having a record of those routes helps in restoring them after the device has been renamed.

### Renaming Devices in Dante Controller

1. Launch Dante Controller, if not already open.
2. In the default Network View Routing Tab, double-click on the Dante Device you wish to rename, to open its Device View. (Or use the shortcut Ctrl-D.)
3. In the Device View window, click on the Device Config tab to open it.
4. In the Rename Device Field, type in the new device name.

**NOTE:** Follow the "Rules for Device & Channel Names" on page 33.

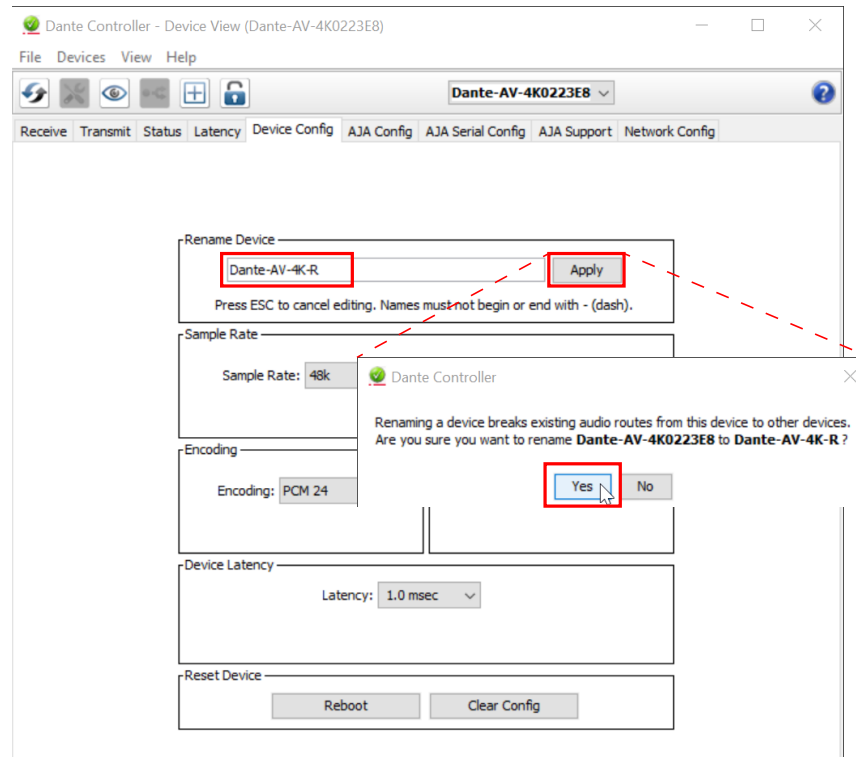
Figure 22. Renaming a Dante AV 4K-R Device



5. Click Apply.

A confirmation dialog appears:

Figure 23. Complete Renaming a Dante AV 4K-R Device



6. If you accept the implications of having to subsequently re-define any previously enabled routes, click 'Yes'.

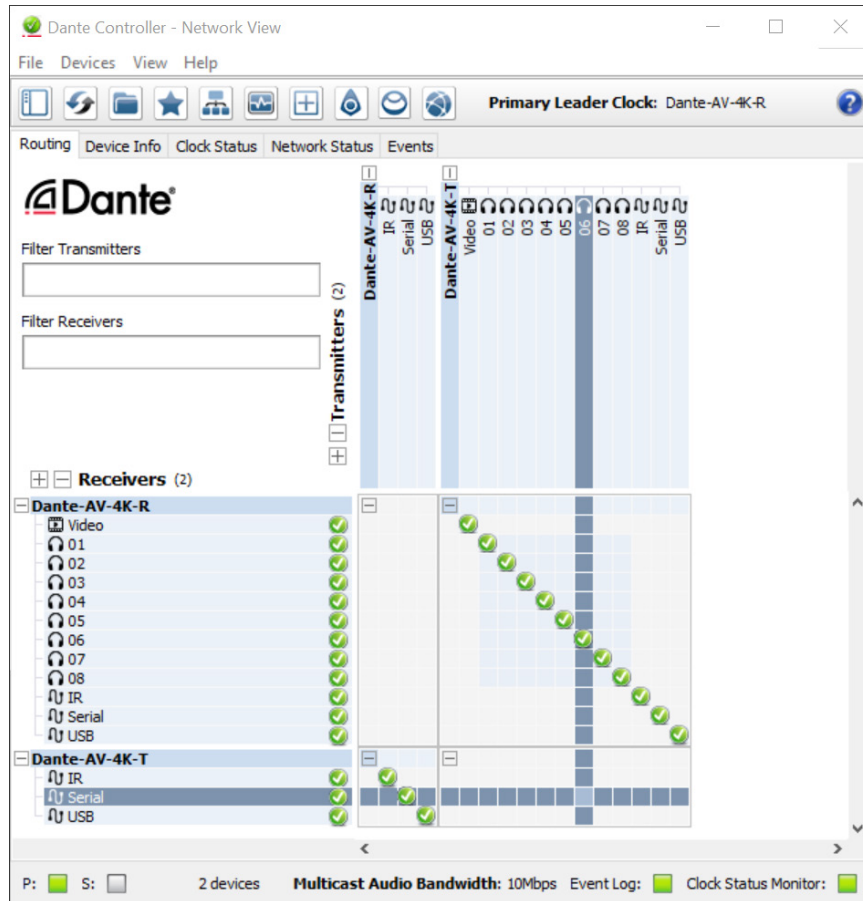
Otherwise, click 'No' in order to provide an opportunity to first make note of your previously existing connections, then return to the beginning of this procedure armed with those notes. This will allow you to easily restore the same connected routes (to the extent that is desired) while using the new device names.

Or, click 'No' if your network is very large and very complex with many devices and many routes, to decide that you do *not* wish to rename the device(s) in order to avoid future connection issues across the network.

**NOTE:** No reboot of an AJA Dante AV 4K-T or Dante AV 4K-R device is required after the device has been renamed. The Dante Controller application will immediately refresh its windows with the new device names.

7. In the Network View window that is still open, previous channel connections to and/or from the renamed device may now be manually restored (and/or new ones added).

Figure 24. Network View Routing Tab After Renaming a Dante AV 4K-R Device



Repeat the above Steps #2 through #7 for each additional Dante AV 4K-T or Dante AV 4K-R device that you wish to be renamed.

## Rules for Device & Channel Names

When renaming a Dante device, be sure to always follow these rules.

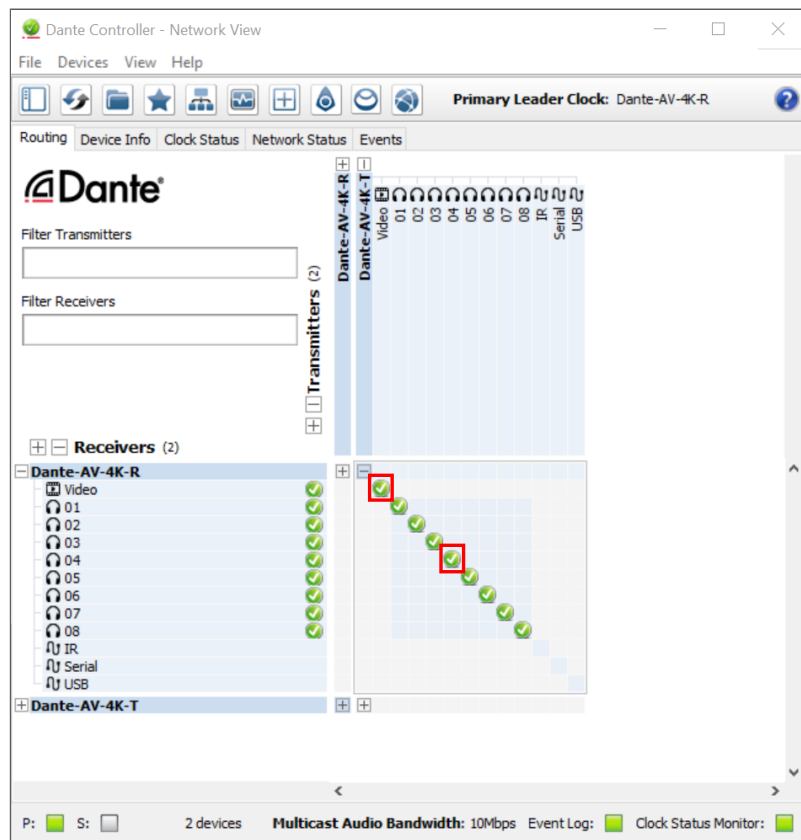
- All Dante names are up to 31 characters in length.
- Name comparisons are case-insensitive: "Guitar" and "guitar" are treated as the same name.
- Unicode and non-roman characters are not supported.
- Device names should follow Domain Name System (DNS) hostname rules. Legal characters are A-Z, a-z, 0-9, and '-' (dash or hyphen).
- Device names cannot begin or end with a hyphen.
- Device names must be unique on the network.
- Transmit channel names may use any character except '=' (equals), '.' (full stop or period), or '@' (at).
- Transmit channel names must be unique on a device. Transmit channel names do not need to be unique on the network, as they are always qualified by device (channel@device).
- Receive channel names follow the same rules as Transmit channel names

NOTE: See the AJA Audinate Dante Controller Guide at <https://www.aja.com/products/dante-av-ultra#support>

# Already Familiar with Dante Controller for Audio?

## Video Channels are Routed like Audio Channels

Figure 25. Dante AV 4K-R receiving video and audio from a Dante AV-4K-T



In the above example, we highlight where the Video transmit channel from a Dante AV 4K-T is routed to the Video receive channel of a Dante AV 4K-R. This is done in the same way as audio channels. Simply 'click' at the cross-connection point in the grid, and various icons appearing there will indicate the ongoing status of that route. Above, we show that the connections are good and without errors, therefore the green 'check-mark' icon appears.

## Flows

Dante media routing creates 'flows'. Each flow carries one or more channels of audio, or one channel of video from a transmitting device to one or more receiving devices. There are two types of flow, Unicast and Multicast. Unicast routing creates flows to a single receiving device; a Unicast flow typically assigns space for 4 channels of audio, or 1 channel of video.

Unicast flows are set up when a receiver subscribes to an available media channel, and are automatically removed when the receiver unsubscribes from all channels in that flow. Multicast routing creates flows that can be received by multiple receivers. Multicast flows are assigned IDs, enabling them to be identified in Dante Controller, and to facilitate their removal. In contrast to Unicast flows, Multicast flows must be set up on the transmitting Dante device before receivers can subscribe to these flows.

## Video Channels are Unicast by Default

---

A difference between routing video vs. audio channels in Dante Controller, is that by default you may only connect one video channel subscriber to any given video channel source.

## Introduction to Video Multicasting

---

Multiple video subscribers may connect to a single Video source, once that source has been setup to Multicast. When Multicasting a Video source such as from a Dante AV 4K-T, Dante separates the audio and video (even if originally embedded in the video). Multicast Video and Audio channels are thus routed separately. The Dante network seamlessly and automatically maintains time synchronization between these related audio and video channels.

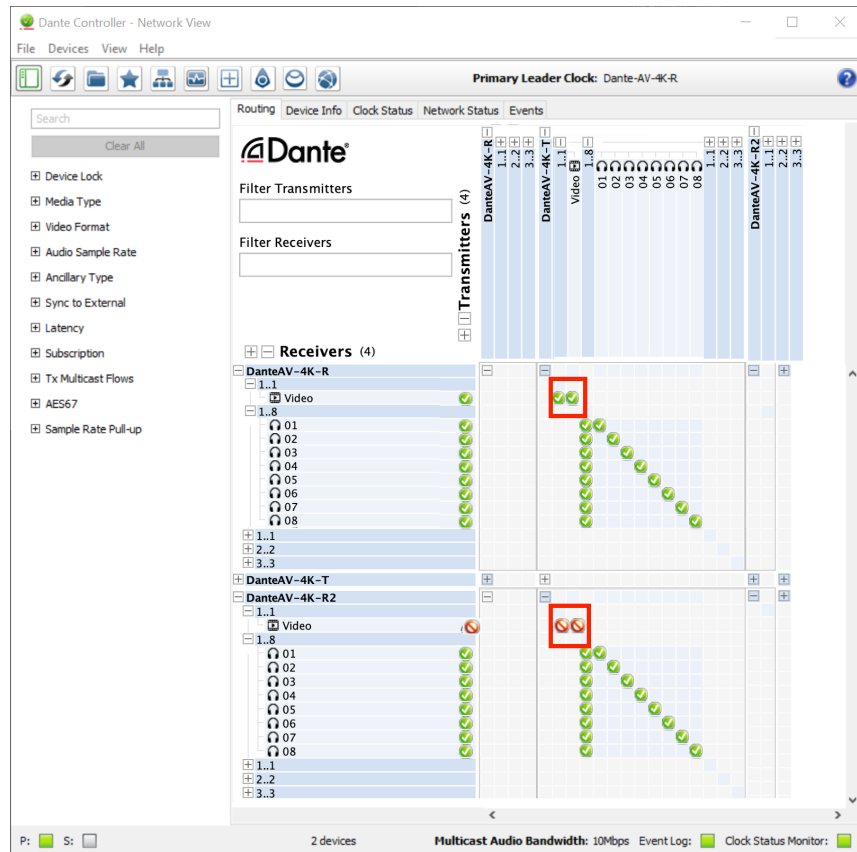
*NOTE: See "[Routing for Video Devices](#)" on page 36*

# Routing for Video Devices

## Unicasting

By default, all video 'subscriptions' (connections) are unicast. That means, as soon as one video destination subscribes to a source, it preempts any others from also subscribing. Without Multicast, attempting to add a second Video channel subscriber (such as another Dante AV 4K-R), the video from the Dante AV 4K-T fails to gain the second subscriber and the Routing Tab shows the red "blocked" icon for that connection:

Figure 26. Network View Routing Tab - a blocked unicast subscription



## Multicasting

Dante routing is unicast by default. This means that a separate flow is set up between each transmitter and receiver. If several receivers are all subscribed to the same channels of a transmitter, it may sometimes be more efficient to use multicast.

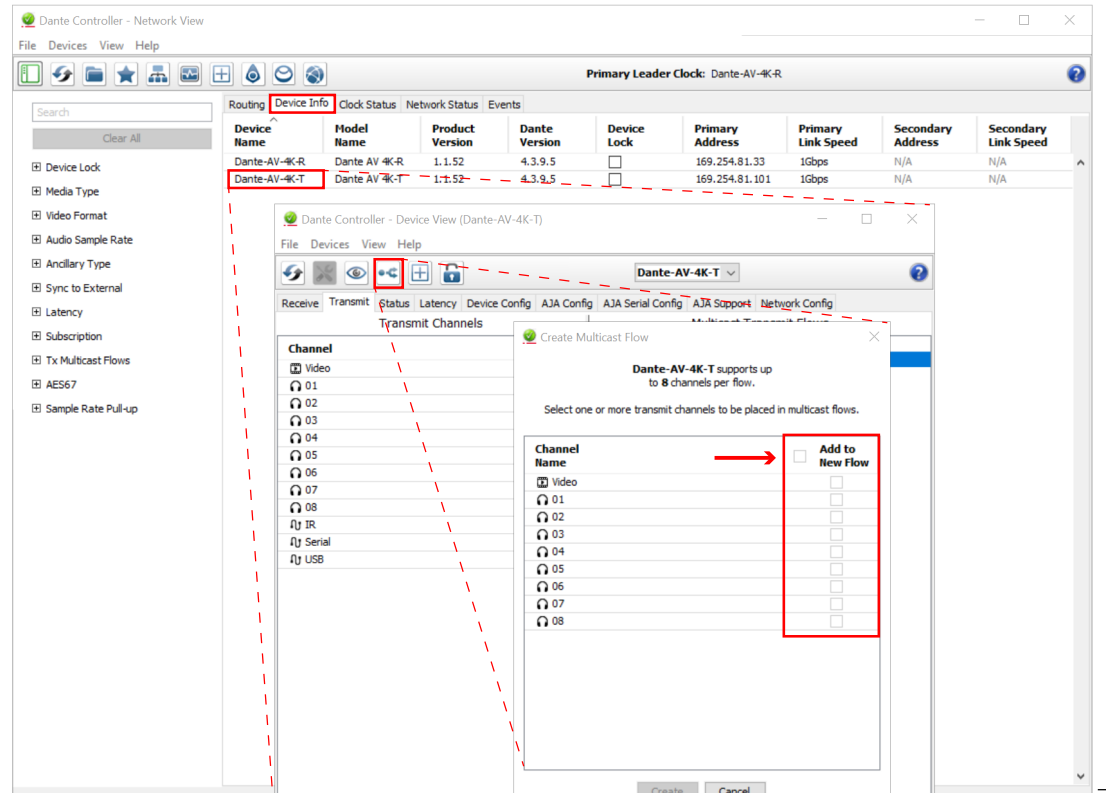
Multicast sends the same set of channels to multiple receivers. In practice, this usually means that the flow is flooded throughout the network. If many receivers want the same channels, using multicast can reduce overall network use, especially on the transmitter, because only one copy of each channel needs to be sent, rather than many. Dante receivers will automatically prefer multicast to unicast if it is available. This means that if a new multicast flow is created containing the channels that a receiver is currently receiving as unicast, the receiver will switch over to receiving media from the multicast flow and the unicast flow will be removed.

## Create a Multicast

You may easily create a 'Multicast' whereby any number of Dante video receivers on the network may simultaneously subscribe to video and audio channels such as from a Dante AV 4K-T.

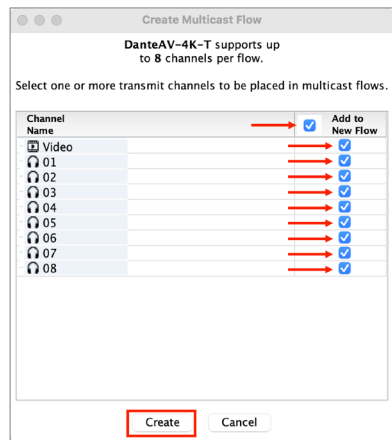
1. From the Network View open the Device Info Tab.
2. Double-click on DanteAV-4K-T device to open it's Device View Window.
3. Click on the Create Multicast button on the Device Views Main Toolbar
4. You'll notice in the window that opens, no channels have yet been assigned to the new multicast.

Figure 27. Opening the Create Multicast Window



5. Check all the channels that you wish to be included in the new Multicast.

Figure 28. Adding Channels to a Multicast

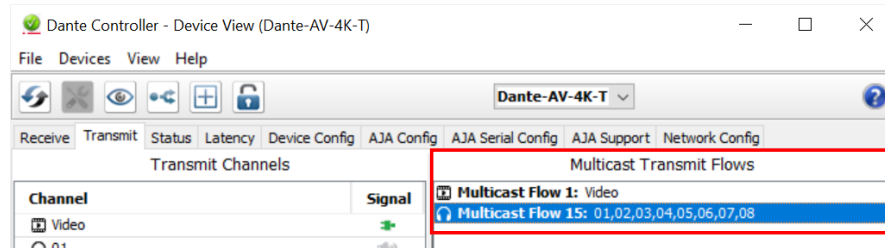


6. Click the Create Button to create the multicast.

7. You return to Device View now with the Multicast Transmit Flows pane populated with the new Multicasts.

Separate Multicasts were created for the Video and eight audio tracks.

Figure 29. Multicast Flows Created



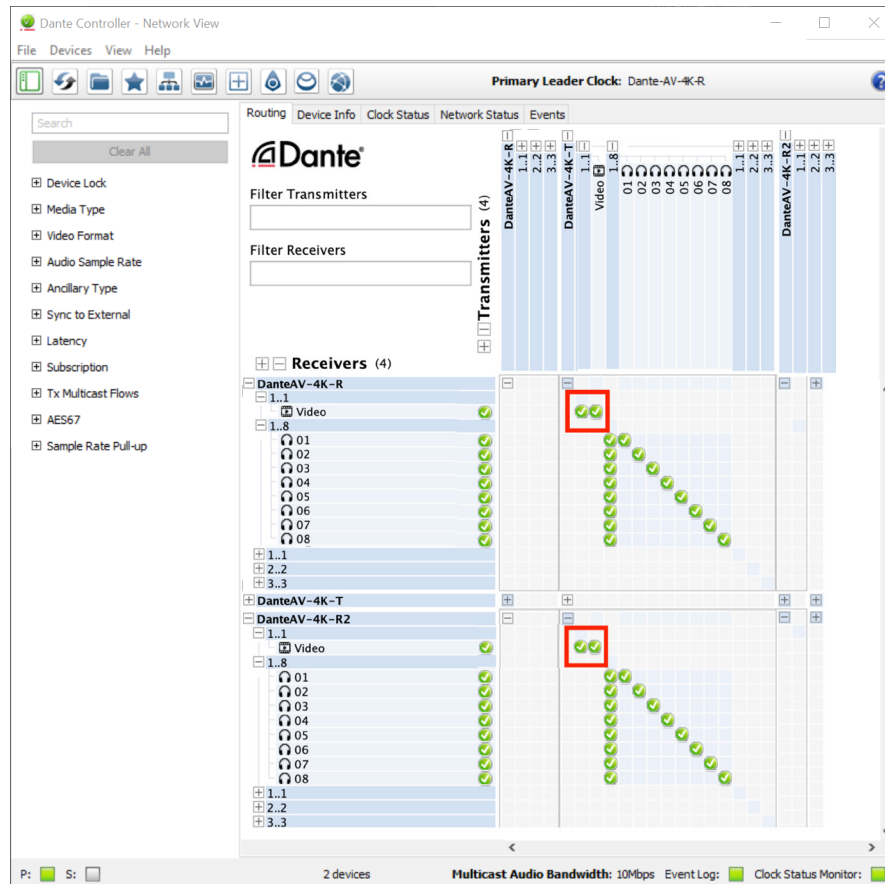
## Routing Video With Multicast

Once you have created a Multicast, you will find in the Network View Routing Tab that you can add more than one Video subscriber to a Dante AV 4K-T's Video source. In this example the Multicast video and eight audio channels are subscribed to by a Dante AV 4K-R and also by a second Dante AV 4K-R(2).

**NOTE:** Dante AV 4K-T and 4K-R devices may be optionally renamed which is useful when there are multiple devices on the network. See ["Rename Device" on page 21](#).

You can see that both subscriptions are simultaneously allowed from the green check-marks.

Figure 30. Multicast Flows Created - Network View Routing Tab Subscriptions

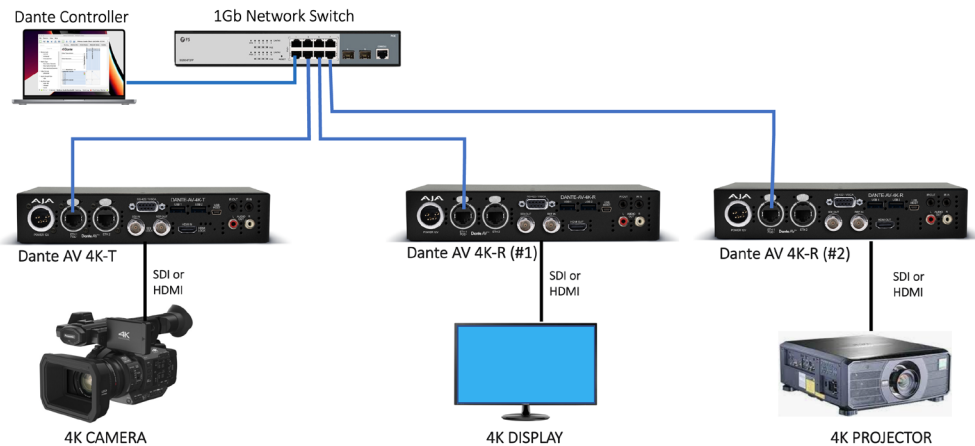


## Simple Example of Multicasting

In this example, a Dante AV 4K-T with a 4K camera is sending video and audio to one Dante AV 4K-R which is being used for an 4K confidence display in a control room, and a second Dante AV 4K-R is connected to an HDMI 4K Projector in another room or building.

*NOTE: For simplicity all Dante AV 4K-T and Dante AV 4K-R devices are shown below as connected to the same network switch. In common practice a remote (#2) Dante AV 4K-R unit (such as one located in another building) would likely be connected to another intervening network switch.*

*Figure 31. Multicasting showing two different Dante AV 4K-R's receiving video and audio from one Dante AV-4K-T over a 1 GigE Ethernet network.*



## Audio Routing

With the thousands of Dante-compatible audio devices available, a comprehensive consideration of audio routing is beyond the scope of this manual. However, some examples in our AJA Audinate Dante Controller Guide\* do show additional audio routing scenarios together with the video routing illustrated. This shows the interoperability of Dante AV 4K-T and Dante AV 4K-R devices with Dante audio-only devices including Audinate's software solutions for Dante audio (such as the Dante Via application).

*NOTE: See [Audinate's Dante Controller User Guide](https://www.audinate.com/learning/technical-documentation) at <https://www.audinate.com/learning/technical-documentation> for additional information*

*NOTE: \*See "AJA Audinate Dante Controller Guide" under Documents at <https://www.aja.com/products/dante-av-4k#support>*

# Infrared: IR-Over-IP

## Advantages of IR-Over-IP

IR-over-IP is an extremely useful feature on the Dante AV 4K-T and Dante AV 4K-R devices.

- Any network-connected pair of either Dante AV 4K-T or Dante AV 4K-R units when routed together in Dante Controller, provide for IR remote control across the Dante network.

This can be vital for media equipment that is unmanned at its location, and which otherwise has no other practical remote control method for the required functions over the long physical distance involved.

Useful IR-over-IP connected media equipment includes:

- Media Players
- Video Projectors
- Other AV Equipment

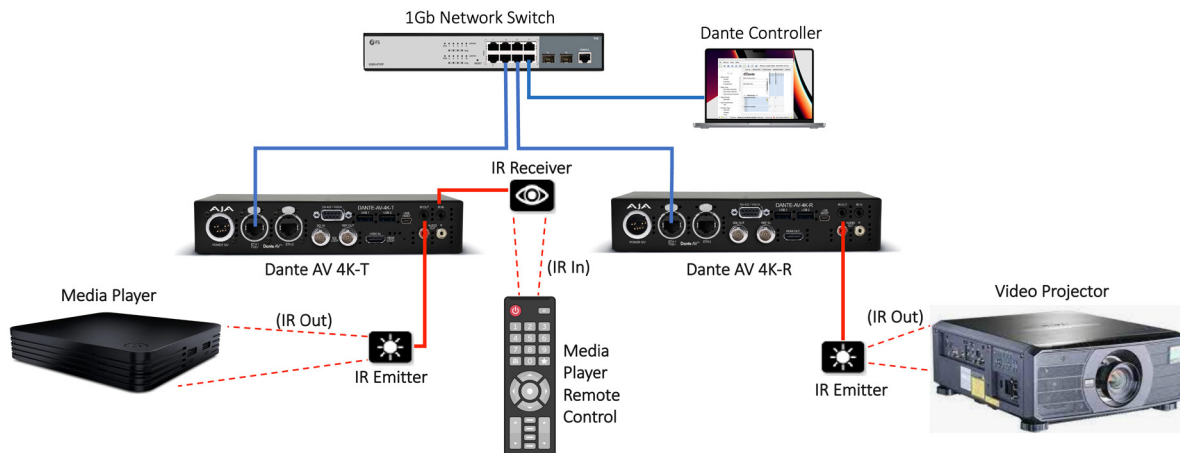
## Implementing IR-Over-IP

### IR Specifications

- 3.5 mm 2-pin connector
- 38kHz Carrier Frequency
- 3.3V to 5V Supply Voltage

### IR-Over-IP: Setups

Figure 32. IR-over-IP through a Dante AV 4K-R



**NOTE:** See "[Dante AV 4K-T Connectors](#)" on page 7 and "[Dante AV 4K-R Connectors](#)" on page 8 for locations of the IR In and IR Out jacks

**NOTE:** As far as sending IR-over-IP is concerned, the Dante AV 4K-T and Dante AV 4K-R units are functionally interchangeable. How this is implemented in Dante Controller's Routing Tab is illustrated in the figure "[Routing Tab of Bidirectional IR-Over-IP](#)" on page 41 below.

## IR-Over-IP: Dante Controller Routing

The example routing tab screen capture below shows that you can connect the IR-Over-IP control flow in either direction between network attached Dante AV 4K-T and 4K-R units (even at the same time).

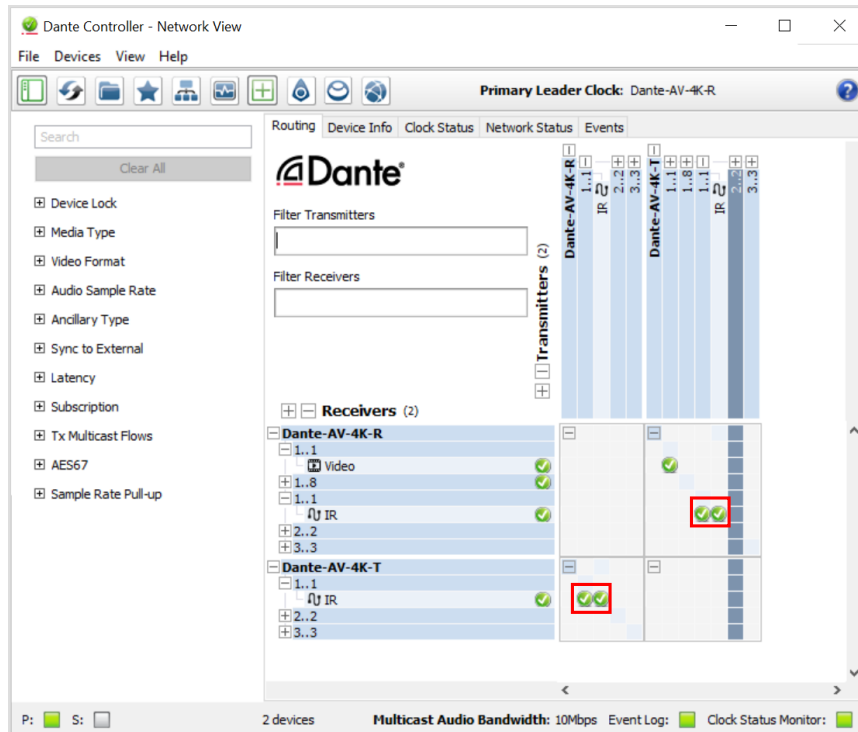
However in practice, typically one IR control direction would suffice (such as a hand-held IR remote in a control room sending to a remotely located video projector or media player).

This means that you can connect IR-Over-IP using any convenient pair of AJA Dante AV 4K-T and 4K-R devices, including:

- Dante AV 4K-T IR transmit to Dante AV 4K-T IR receive
- Dante AV 4K-R IR transmit to Dante AV 4K-R IR receive
- Dante AV 4K-T IR transmit to Dante AV 4K-R IR receive
- Dante AV 4K-R IR transmit to Dante AV 4K-T IR receive

The IR control routing possibilities for just one Dante AV 4K-T and one Dante AV 4K-R unit are shown below.

Figure 33. Routing Tab of Bidirectional IR-Over-IP



**CAUTION:** Suitability for a particular Dante Controller routing configuration depends upon the types of IR devices being connected and their respective IR protocols.

# Serial Control over IP

## Advantages of Serial Control Over IP

Serial over IP can be used with:

- PTZ joystick controller
- PTZ camera
- Other devices.

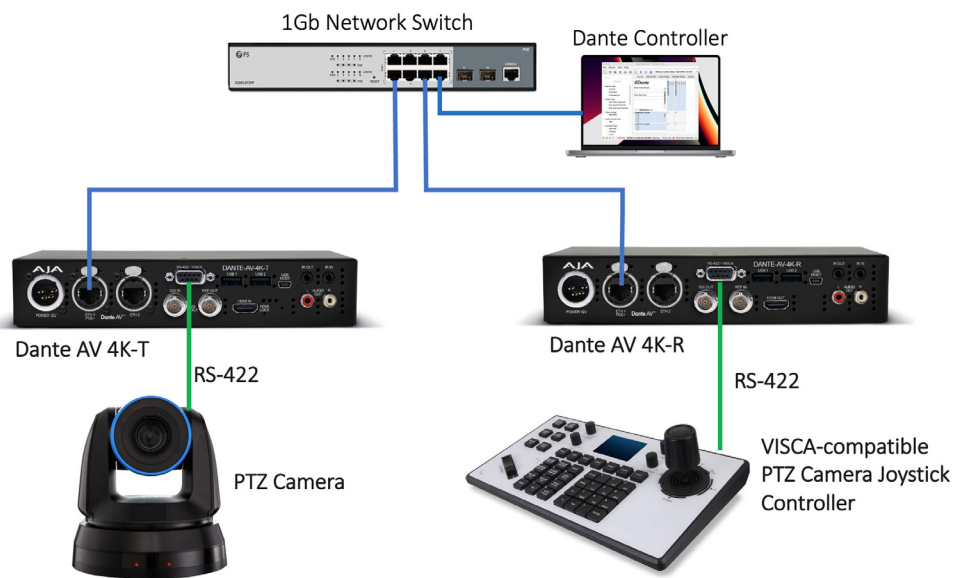
## Implementing Serial Control Over IP

Serial Control Specifications

- RS-422 compatible with
- Visca Control for PTZ camera

## Serial-Over-IP: Example PTZ Camera Setups

*Figure 34. Serial-over-IP through a Dante AV 4K-T and 4K-R to PTZ Camera from a Joystick Controller*



**NOTE:** See ["Dante AV 4K-T Connectors" on page 7](#) and ["Dante AV 4K-R Connectors" on page 8](#) for locations of the Serial (RS-422) port

**NOTE:** As far as sending Serial-over-IP is concerned, the Dante AV 4K-T and Dante AV 4K-R units are functionally interchangeable (depending upon the types of serial devices used.) We show this in the figure ["Routing of Serial-Over-IP" on page 43](#) below.

## Serial-Over-IP: Dante Controller Routing

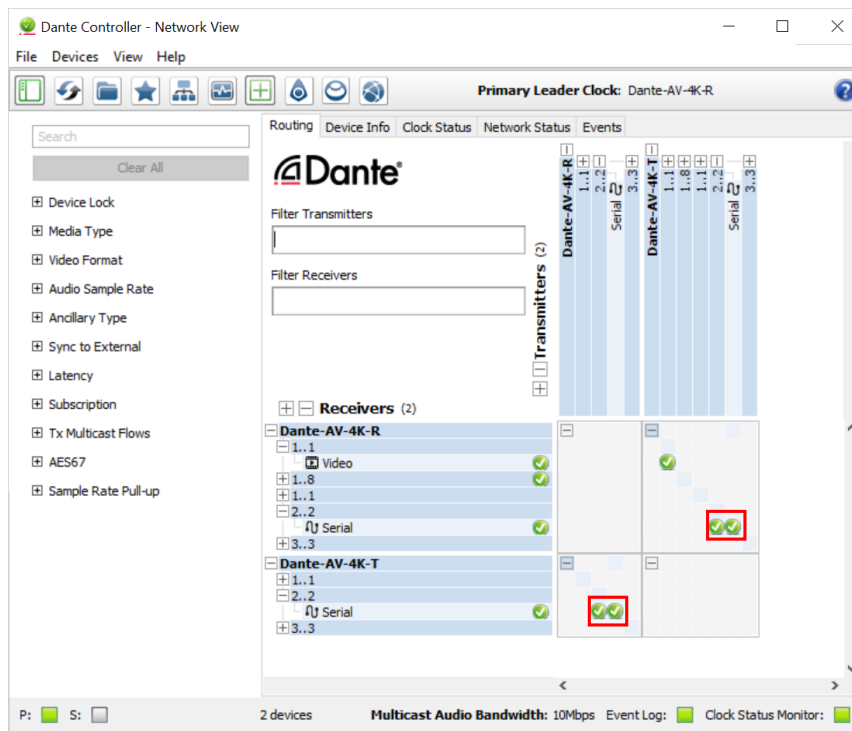
The example Routing Screen capture below shows that you can connect the Serial-Over-IP control flow in either direction between network attached Dante AV 4K-T and 4K-R units (even at the same time).

However in practice, typically one Serial control direction would suffice. This means that you can route Serial-Over-IP transmit and receive channel connections using any convenient pair of AJA Dante AV 4K-T and 4K-R devices, including:

- Dante AV 4K-T Serial transmit to Dante AV 4K-T Serial receive
- Dante AV 4K-R Serial transmit to Dante AV 4K-R Serial receive
- Dante AV 4K-T Serial transmit to Dante AV 4K-R Serial receive
- Dante AV 4K-R Serial transmit to Dante AV 4K-T Serial receive

The Serial Control routing possibilities for just one Dante AV 4K-T and one Dante AV 4K-R unit are shown below.

Figure 35. Routing of Serial-Over-IP



**CAUTION:** Suitability for a particular Dante Controller routing configuration depends upon the types of serial devices being connected and their respective serial protocols.

# USB over IP

## Advantages of USB Over IP

### KVM

The entire Dante network can function like a gigantic KVM switch for connected USB keyboards and mice. One keyboard and mouse could remotely control as many computers as are connected to Dante-AV 4K-T and 4K-R devices on the network.

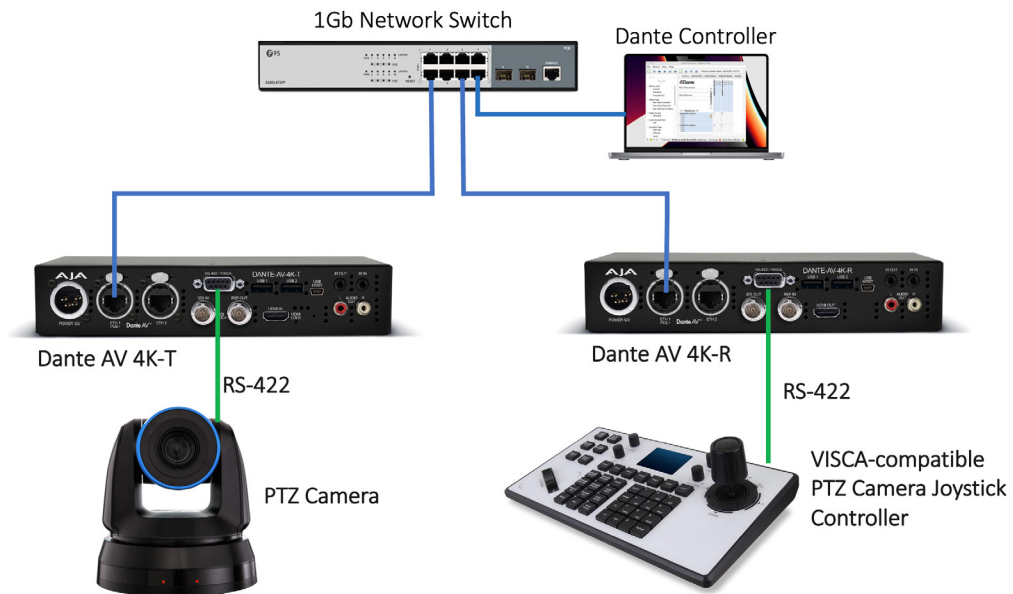
## Implementing USB Over IP

### USB 1 & 2 Specifications

- USB Type-A connector, female
- Available Power: 100 mA at 5 VDC

### USB Over IP: Setups for KVM

*Figure 36. USB-over-IP using Dante AV 4K-T and 4K-R: controlling a computer through a Dante AV 4K-T unit*



**NOTE:** See ["Dante AV 4K-T Connectors" on page 7](#) and ["Dante AV 4K-R Connectors" on page 8](#) for locations of the USB 1 and USB 2 ports.

**NOTE:** As far as sending USB-over-IP is concerned, the Dante AV 4K-T and Dante AV 4K-R units are functionally interchangeable (depending upon the types of USB devices used). We illustrate this in the figure ["Routing of bidirectional USB Over-IP" on page 45](#) below.

## USB-Over-IP: Dante Controller Routing

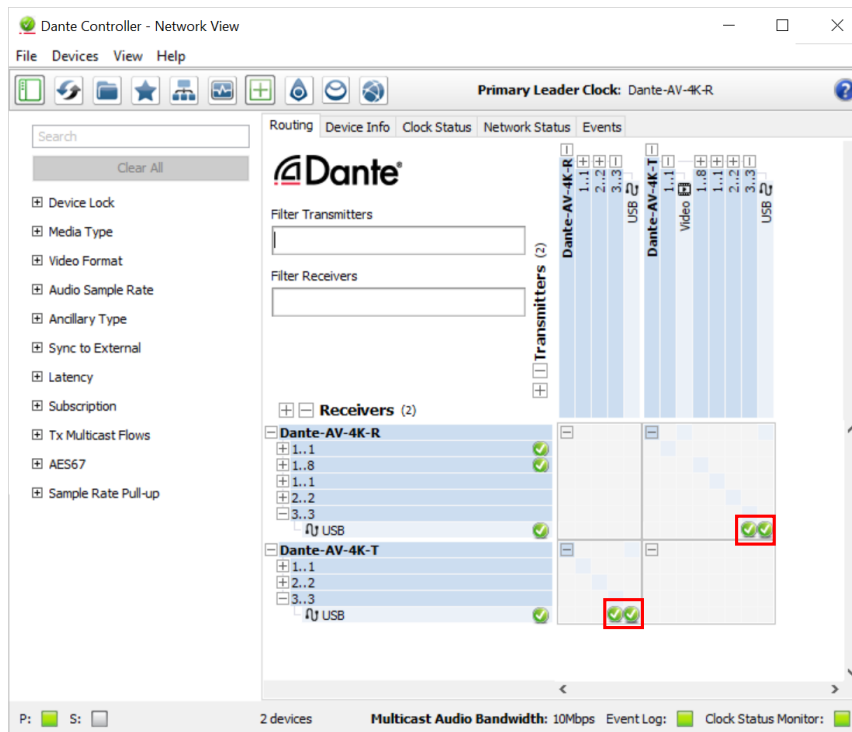
The example routing tab screen capture below shows that you can route the USB-Over-IP channel connections in either direction between network attached Dante AV 4K-T and 4K-R units (even at the same time). However in practice, typically one USB control direction would suffice.

This means that you can connect USB-Over-IP transmit and receive connections using any convenient pair of AJA Dante AV 4K-T and 4K-R devices, including:

- Dante AV 4K-T USB transmit to Dante AV 4K-T USB receive
- Dante AV 4K-R USB transmit to Dante AV 4K-R USB receive
- Dante AV 4K-T USB transmit to Dante AV 4K-R USB receive
- Dante AV 4K-R USB transmit to Dante AV 4K-T USB receive

The USB routing possibilities for just one Dante AV 4K-T and one Dante AV 4K-R unit are shown below.

Figure 37. Routing of bidirectional USB Over-IP



**CAUTION:** Suitability for a particular Dante Controller routing configuration depends upon the types of USB devices being connected and their respective USB protocols.

# User Presets

---

Dante Controller supports the saving and loading of Dante network routing and device configurations, known as 'presets'. A preset file contains configuration and routing parameters for some or all of the devices in the network.

Preset files are saved as XML, and can be edited offline. They are also 'device-agnostic' - they can be shared between networks with different physical devices.

## What can I do with Presets?

---

- Backup and restore network configurations
- Quickly switch between saved network configurations
- Copy a Dante network configuration from a 'lab' or test network to a live or production network
- Create network configurations for special, or periodic events, and then switch back to the standard configuration when desired
- Quickly apply one or more configuration settings to a number of devices simultaneously - for example, setting all devices on your network to the same sample rate (global configuration)
- Use Dante Controller as an off-line editing tool – off-line edit the saved preset configuration for reuse in new network configuration deployments

## When are Presets Helpful?

---

Dante Controller's Preset feature becomes indispensable when:

- You have a large Dante network with many Dante devices
- You use many audio channels and use customized channel names
- You used many audio channels even with few devices
- You use several Multicast and Flow setups
- The venue has different "modes" of operation, as to which types of activities and media are running in different rooms, or how channels are named and managed
- You sometimes vary the control directions or where the connected equipment is attached, in your routing of IR-, Serial-, and USB-over-IP devices.

## Device Roles

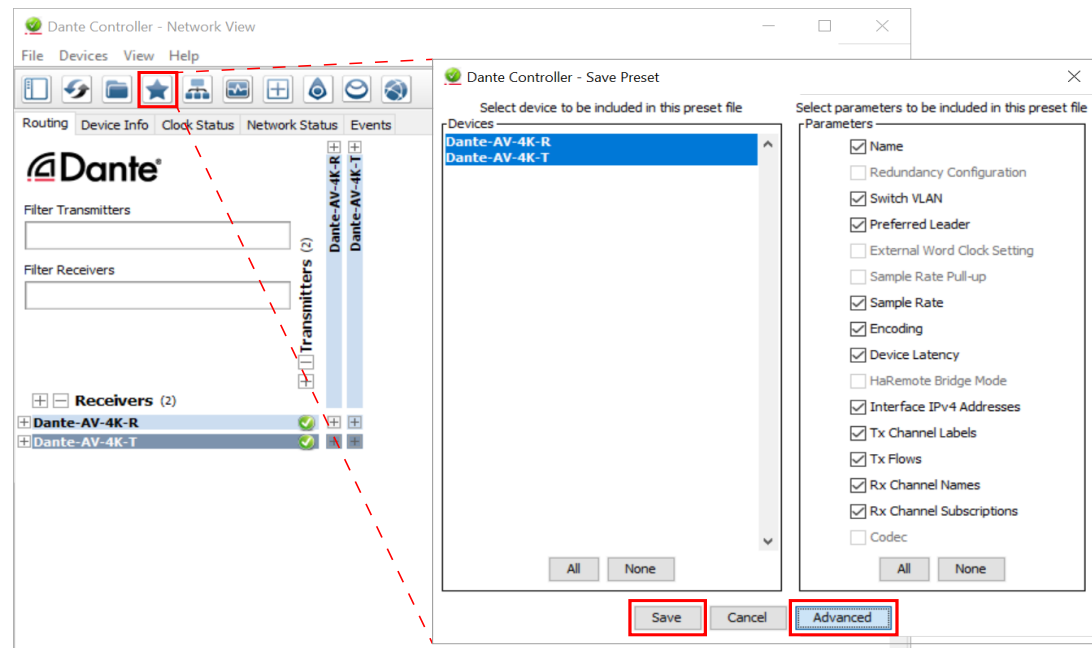
---

Presets introduce the concept of 'device roles'. When a preset is saved, the configuration and routing for each selected device is saved into the preset as a device role, with the same name as the device from which it was created.

If a role is applied to a device that is different from the role's originating device - for example, a role for console model A is applied to console model B - Dante Controller will identify any issues that might arise (such as unsupported sample rates) and will display those issues so they can be addressed - or ignored, if they are not important.

## Saving Presets

Figure 38. Example of Saving a Preset



To save a Preset that includes all device parameters:

1. Click the 'Save Preset' button (the star icon) in the Network View main toolbar.
2. Select the devices that you wish to include in the preset. Click All to select all devices, or None to clear all selections.
3. Click Save.

Or, to save a Preset that also includes a selection of device parameters:

1. Click the 'Save Preset' button in the Network View main toolbar.
2. Click Advanced.
3. Select the devices that you wish to include in the preset.
4. Select the parameters that you want to save for the selected devices.
5. Click Save. The final Save dialog (not shown) lets you set a Preset name. Click Save.

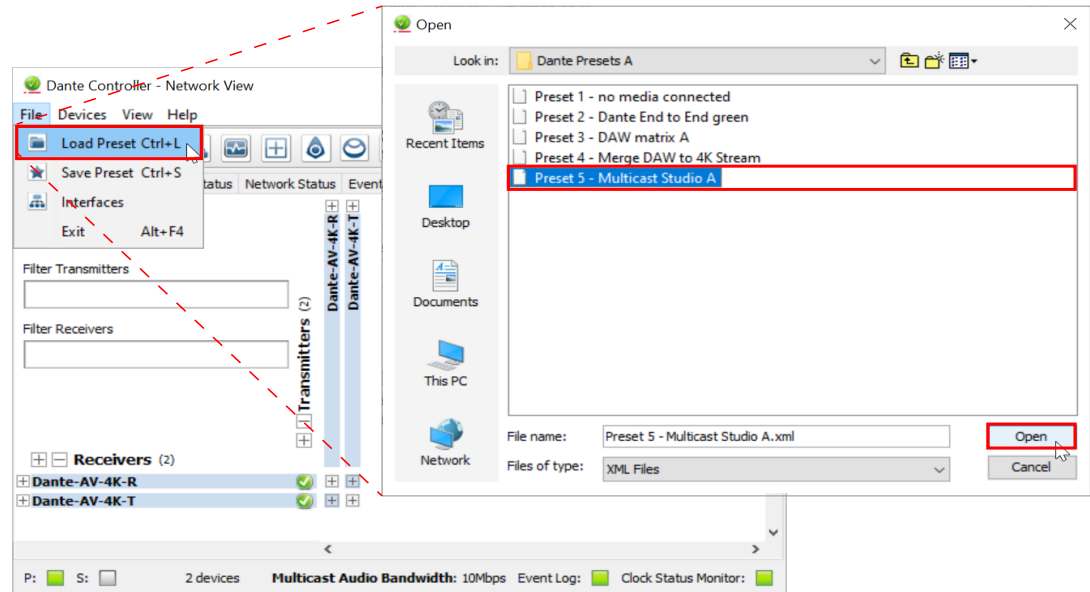
**NOTE:** Presets are saved as .xml files, which can be manually edited if required, using a text editor.

## Applying Presets

To load and apply a saved preset,

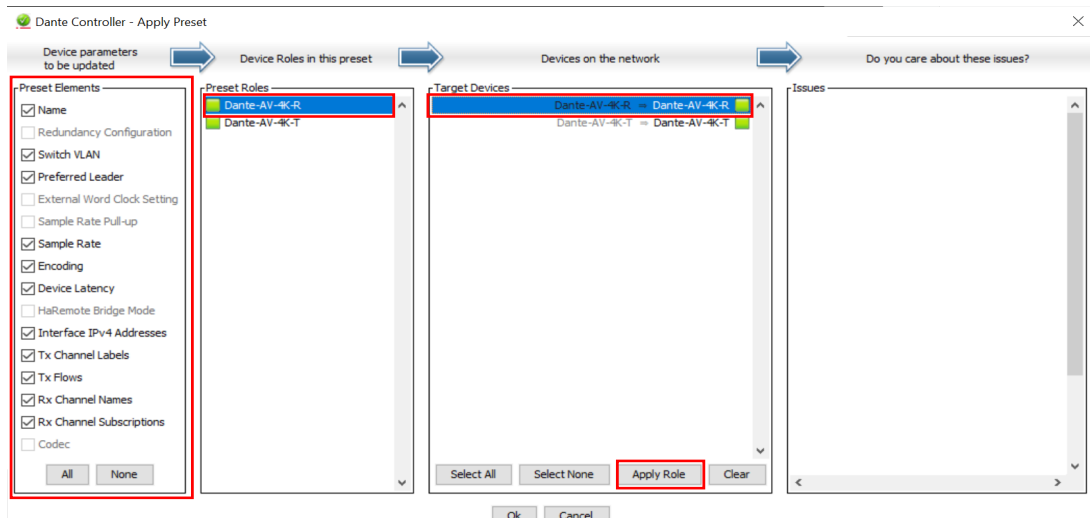
1. Select File > Load Preset from the main menu (Ctrl + L).
2. Select the Preset you want.
3. Click Open. (Note that legacy preset files are supported.)

Figure 39. Select a Preset to Load



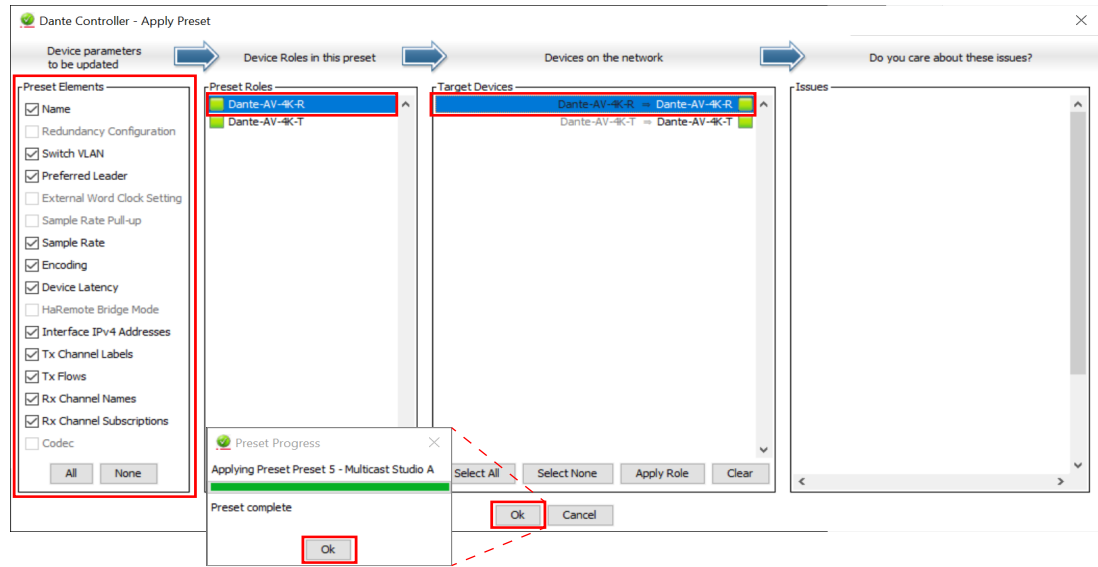
The 'Apply Preset' dialog window which opens, is arranged in 4 columns, representing the logical steps in applying a preset (from left to right).

Figure 40. Apply Preset Dialog



4. Check the device parameters you wish to include.
5. Choose the Device Role desired in the second column.
6. Choose the Target Device(s) in the Third Column.
7. Respond to the issues presented in the fourth column (if any).
8. Click Apply Role.
9. Click OK.
10. Wait until the applying preset progress bar completes all the way to 100%.
11. Click OK.

Figure 41. Configure and Enable a Preset



For additional information, see the Presets section of "Audinate's Dante Controller User Guide" found at [https://dev.audinate.com/GA/dante-controller/userguide/webhelp/content/front\\_page.htm](https://dev.audinate.com/GA/dante-controller/userguide/webhelp/content/front_page.htm).

# Dante Updater Application

## Introduction

Dante Updater is a desktop application that allows you to update the Dante firmware and software which resides in Dante hardware devices including AJA Dante AV 4K-T and 4K-R converters. Dante Updater is installed automatically when you install the Dante Controller application available from <https://www.audinate.com>. Dante Updater is launched from within Dante Controller, as we will show below.

## Internet Requirements

The Internet must be connected to run Dante Updater. The application is linked to an online database containing firmware update files for Dante products by AJA as well as from numerous other third-party Dante-compatible equipment manufacturers. In order for Dante Updater to see firmware downloads for a specific AJA product (or for any other Dante-compatible product), that product must be released and its firmware download file resident in the public Audinate Dante firmware database.

## Dante Network Requirements

The devices to be updated must be connected to a Dante AV network, such that they appear correctly within Dante Controller. If the Dante devices do not appear in Dante Controller they will not appear in Dante Updater, either.

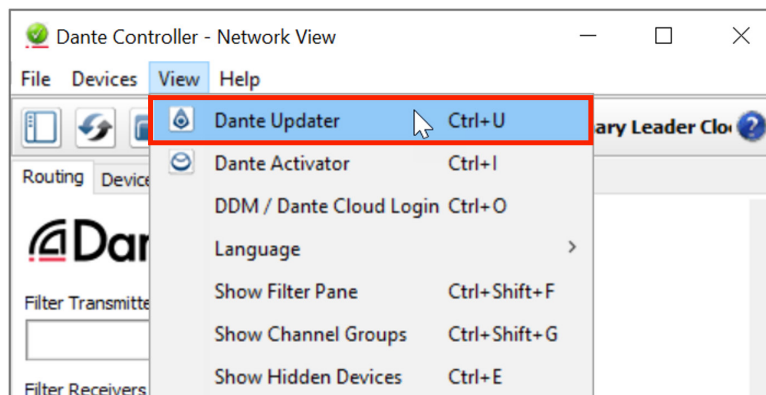
When Dante Updater is connected to a Dante network, it scans the network and identifies the firmware versions for each discovered Dante device.

**CAUTION:** *When connecting to the Internet, if by doing so a DHCP server connects to the Dante network, understand that any Dante devices not configured for manual IP address, may change their IP address(es) including possibly switching to a different subnet than the primary Dante network. If that occurs those Dante devices may disappear entirely or show errors in Dante Controller. If the DHCP server provides addresses within the Dante network's subnet, or when devices have IP addresses manually set, then there shouldn't be a problem.*

## Launch Dante Updater on Windows

From the Dante Controller application's View Menu, select Dante Updater, or type Ctrl+U.

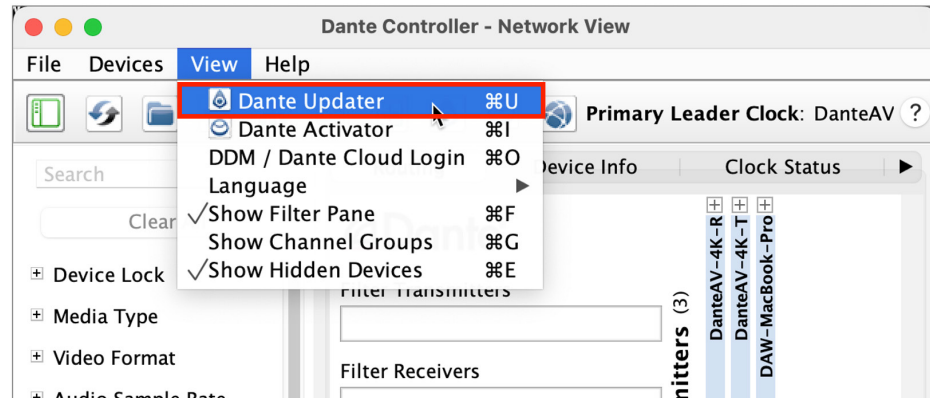
Figure 42. Launching Dante Updater on Windows



## Launch Dante Updater On macOS

From the Dante Controller application's View Menu, select Dante Updater, or type Cmd+U.

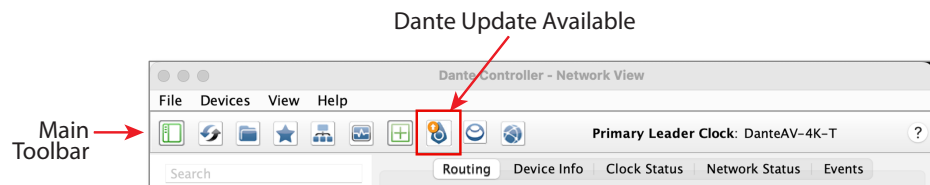
Figure 43. Launching Dante Updater on macOS



## Launch Dante Updater from the Main Toolbar

You may alternatively click the Dante updater button from Dante Controller's Network View Main Toolbar, on either Windows or macOS.

Figure 44. Open Dante Updater from the Main Toolbar



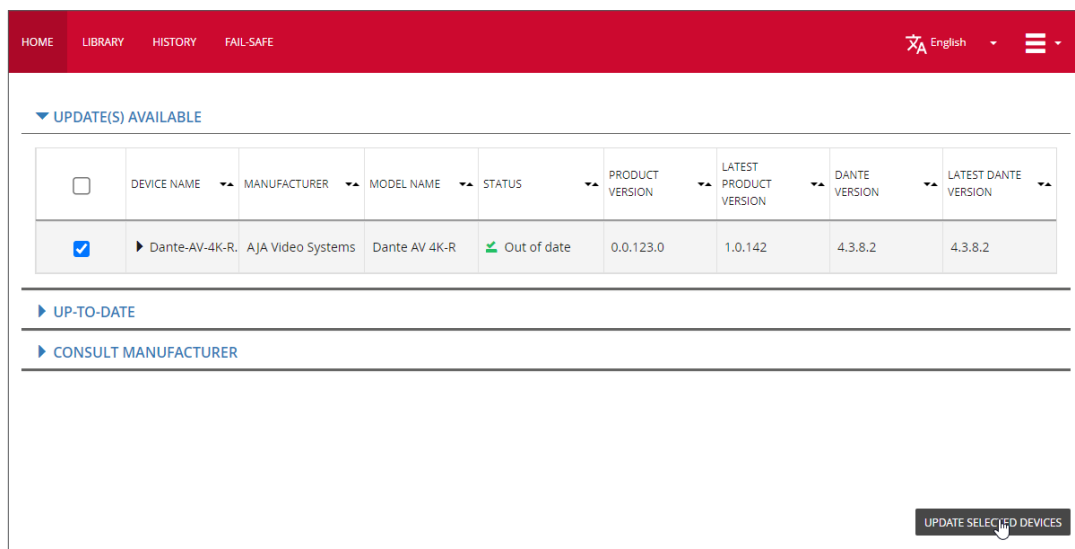
**NOTE:** If Dante Updater identifies one or more devices on your Dante network for which new firmware is available, a notification icon is displayed on the Dante Updater button in the main toolbar:

## Update Dante AV 4K-T & 4K-R Devices

1. Launch Dante Updater from within Dante Controller by any of the methods shown above.
2. Expand the Update(s) Available pane by clicking on its expand/collapse triangle. (See below, Figure 46.)
3. Select (check) the checkbox for the Dante device(s) you wish to update.

**NOTE:** Only Dante devices present on the Dante network and which require updates will be listed.

Figure 45. Select Dante Devices to update



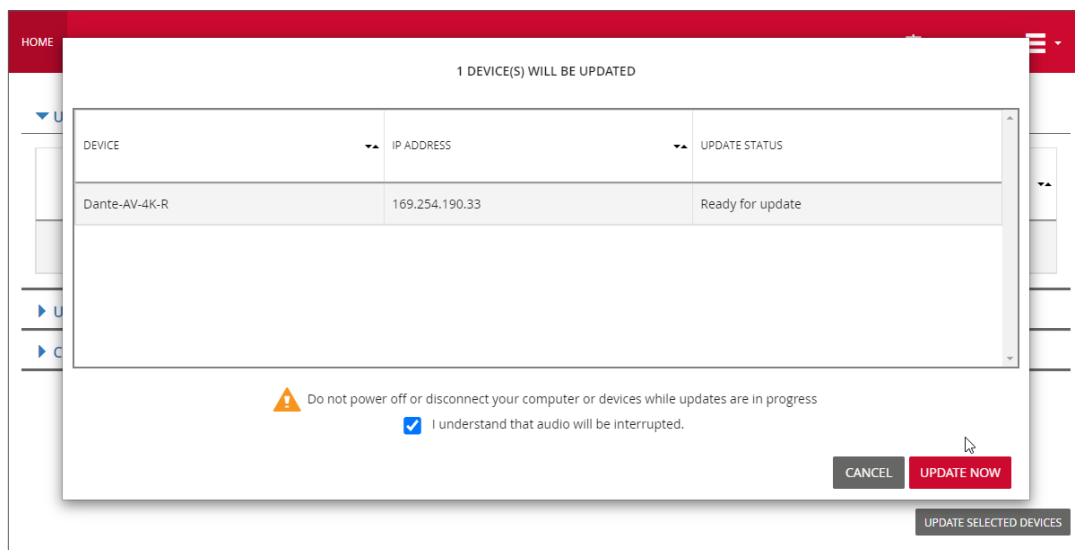
**NOTE:** If your Dante AV 4K device does not appear listed in the Update(s) Available pane, first use the Network View in the Dante Controller application to confirm that it is present on the Dante network.

**NOTE:** In the event the device is present on the network and has the most recent firmware installed, then that device will appear in the Up-To-Date pane.

**NOTE:** If the device is present on the network, and it is listed on the Consult Manufacturer pane, please contact AJA support. (See "[Contacting AJA Technical Support or Sales](#)" on page 2.)

4. Click Update Selected Devices.

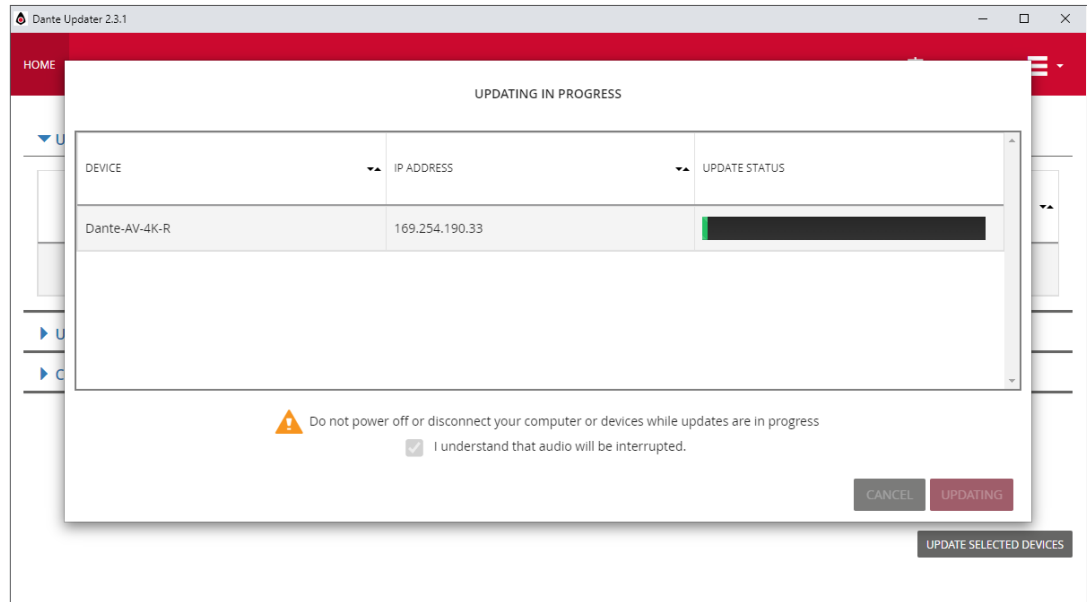
Figure 46. Initiate the firmware update process for a ready device



5. Click "I understand that audio will be interrupted."

6. Click Update Now.

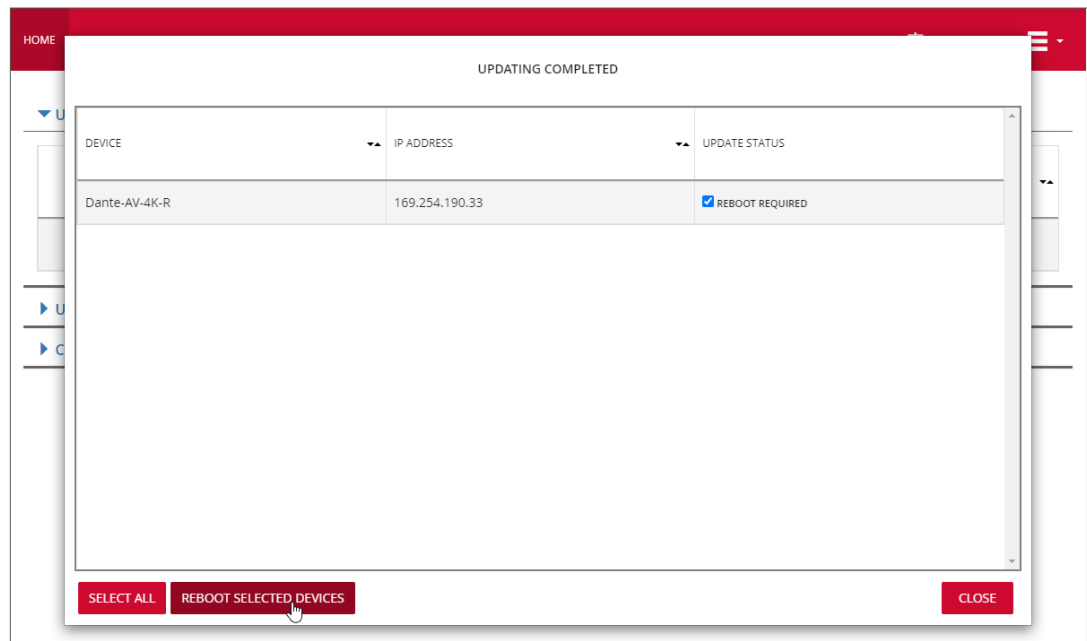
Figure 47. Firmware update in progress



7. Wait until the Update Status progress bar completes.

**CAUTION:** Do not power off or disconnect your computer or Dante device(s) while updates are in progress. Doing so could cause a corrupted firmware condition and may require device(s) recovery using the "Failsafe Mode" on page 60.

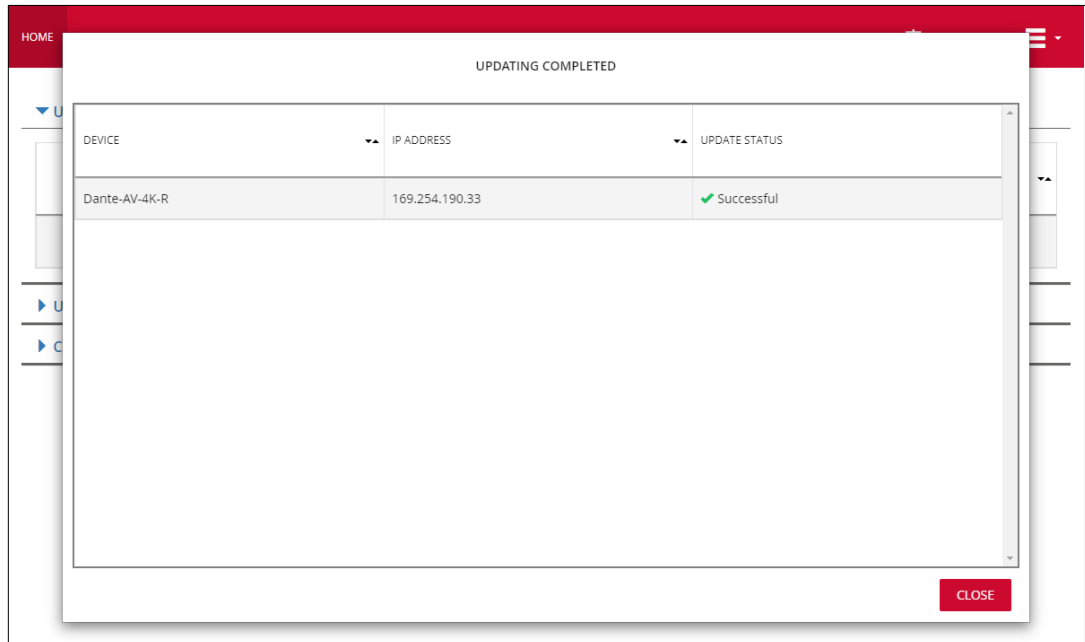
Figure 48. Reboot Dante device after firmware update



8. Select (check) the Reboot Required checkbox next to the device just updated, if it was not already checked.

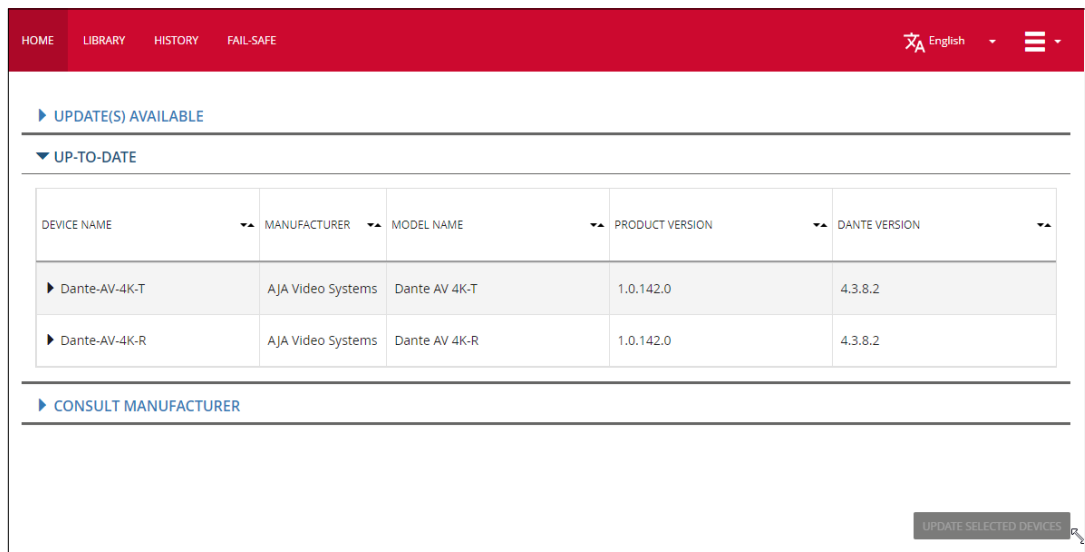
9. Click Reboot Selected Devices.

Figure 49. Firmware update and device reboot successful



10. When the Update Status shows a green check Successful, and the Reboot Selected Devices and Select All buttons have disappeared, then the reboot has been completed. Click the Close button.
11. Repeat Steps #2 through #9 above for any additional Dante Devices present on your Dante Network which need updating.
12. To confirm the device(s) have been successfully updated, click the Up-To-Date expand/collapse triangle to reveal the device list.

Figure 50. Devices Up-To-Date after firmware update(s) and reboot(s)

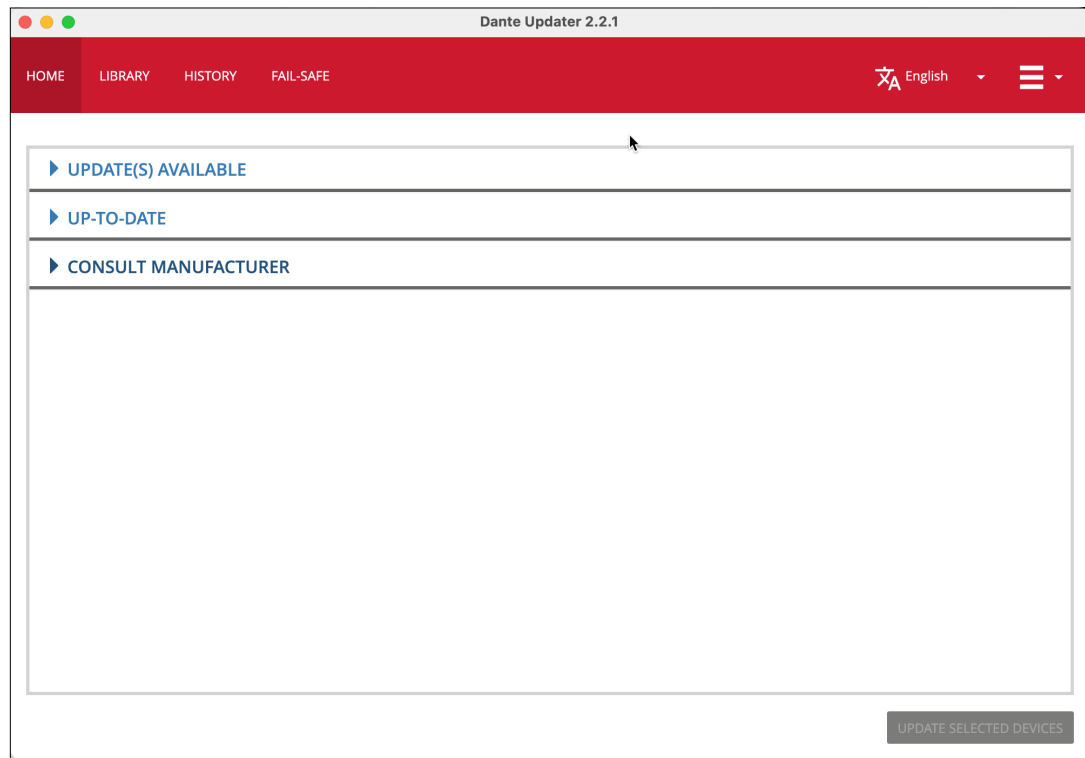


13. Once all update(s) are complete, you may exit the Dante Updater window, which returns you to the Dante Controller window.

# Dante Updater User Interface Main Tabs

## Home Tab

Figure 51. Dante Updater Application Home Tab (collapsed)



### Update(s) Available

Click the triangle icon to expand the pane and show all Updates Available. Only Dante devices which are present on your Dante network and which require updates will be listed.

### Up-to-Date

Click the triangle icon to expand devices present on the Dante Network and which have Up-to-Date firmware.

### Consult Manufacturer

Click the triangle icon at left to show information about AJA Dante AV 4K-T and 4K-R devices on the Dante network, and which do not otherwise appear under the Update(s) Available pane (see above.)

**NOTE:** Each Dante AV 4K-T or 4K-R device will appear in only one of the Home Tab's three panes at any one time. Those three device listings behave in a mutually exclusive way. For example, after a successful updating, a device previously appearing in the Update(s) Available pane, instead appears in the Up-To-Date pane.

## Library Tab

Shows all updates available for all Dante devices (including for all third-party products).

Figure 52. Dante Updater Library Tab

<input type="checkbox"/>	MANUFACTURER	MODEL NAME	STATUS	PRODUCT VERSION	DANTE VERSION	RELEASE DATE	DEVICE LAST DISCOVERED
<input type="checkbox"/>	AJA Video Systems	Dante AV 4K-R	✔	1.0.142	4.3.8.2	Tue, Aug 1, 2023	Aug 9, 8:47 AM
<input type="checkbox"/>	AJA Video Systems	Dante AV 4K-T	✔	1.0.142	4.3.8.2	Tue, Aug 1, 2023	Aug 9, 8:34 AM
<input type="checkbox"/>	IED	IP Touch Screen Mic Sta...	✚	1.0.0	4.1.4.2	Thu, Apr 4, 2019	
<input type="checkbox"/>	StewartAudio	DSP100-1-CV-D	✚	2.0.0	4.2.2.3	Thu, Nov 5, 2020	

## History Tab

Shows the history of all updates to devices present on the Dante network.

Figure 53. Dante Updater History Tab

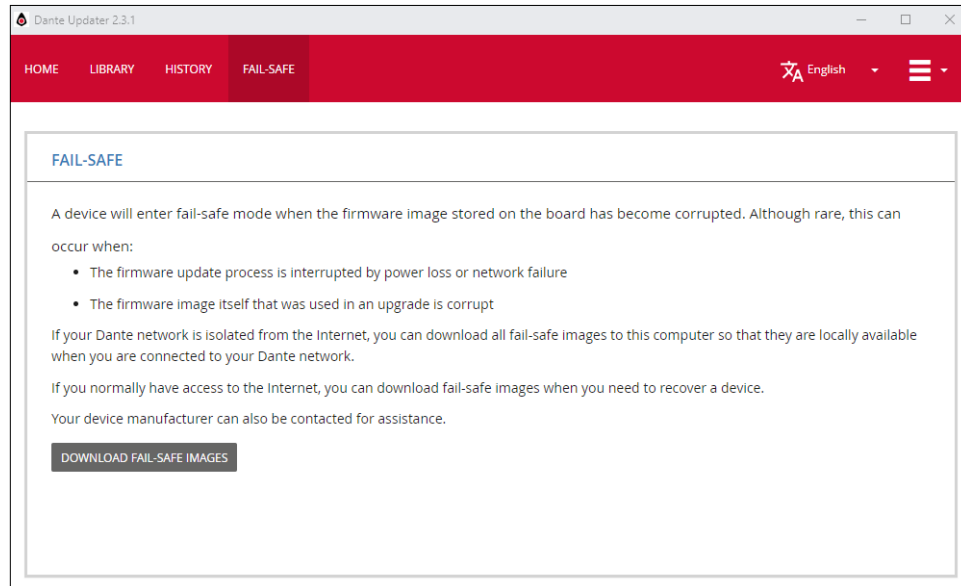
DATE	DEVICE NAME	MANUFACTURER	MODEL NAME	UPDATE STATUS	UPDATED PRODUCT VERSION	PREVIOUS PRODUCT VERSION	UPDATED DANTE VERSION	PREVIOUS DANTE VERSION	DOMAIN	IP ADDRESS
Wed, Aug 9, 2023	Dante-AV-4K-R	AJA Video Syste...	Dante AV 4K-R	Successful	1.0.142	0.0.123.0	4.3.8.2	4.3.8.2	unmanaged	169.254.190.33
Wed, Aug 9, 2023	Dante-AV-4K-R	AJA Video Syste...	Dante AV 4K-R	Failed	1.0.142	0.0.123.0	4.3.8.2	4.3.8.2	unmanaged	169.254.190.33

## Fail-Safe Tab

This enables recovery from a corrupted Dante device firmware, whether as a result of power failure during a firmware update, or from a corrupted firmware update file.

**NOTE:** Please contact AJA Support for assistance if needed.

Figure 54. Fail-safe Tab



## Checking for Updates Automatically

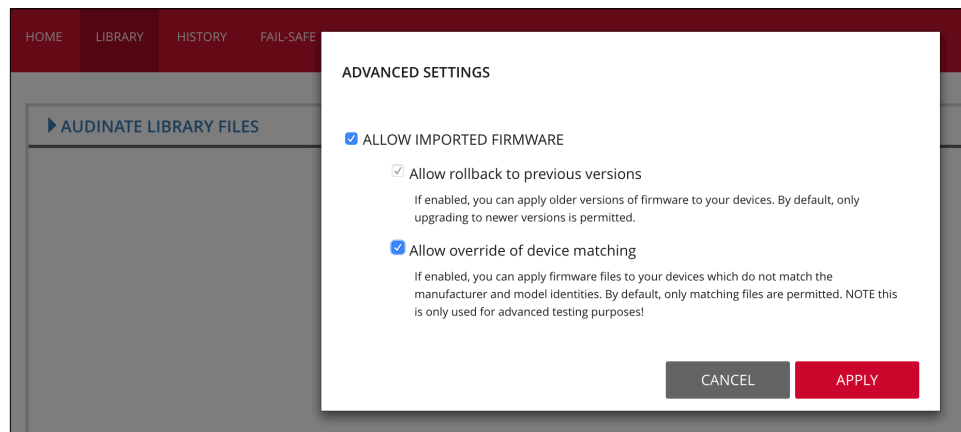
Dante Controller can also check for updates automatically. If an update becomes available, you will be notified via a pop-up message.

To activate automatic checking, in the update dialog, select the option to check for updates automatically.

## Importing Files to Dante Updater

It is possible to import files into the Dante Updater Library if you have enabled file importing through the Advanced Settings.

Figure 55. Dante Updater Advanced Settings to Allow Imported Firmware



For more information, please see documentation from Audinate:

<https://www.audinate.com/>

# Chapter 4 – Interoperability

---

## Dante Applications for PC or Mac

---

A number of software applications from [Audinate](#) are used to work with the Dante ecosystem, and which may run on either PC or Mac computers.

*NOTE:* See <https://www.audinate.com/products/software>.

### Dante Controller

---

[Dante Controller](#) shows the Dante AV 4K-T and 4K-R devices as eight routable audio sources and eight routable audio destinations, as well as one routable video source and one routable video destination. Use this application to set up the audio and video routing between Dante devices, control the audio and video connections in the Dante setup, and move audio and video in real-time over an Ethernet network.

### Dante Domain Manager

---

Dante Domain Manager is essential infrastructure for service providers, integrators, and managers of installed AV-over-IP systems. It works in tandem with the familiar Dante Controller application to bring IT-level rigor and scalability while retaining Dante's legendary ease of use.

Secure devices, manage users, organize rooms and functions, and run AV seamlessly over routed networks. The new API lets you control Dante from touch panels, monitor status and automate workflows.

### Dante Studio

---

Dante Studio is a suite of software tools that brings Dante video directly to your PC - no additional hardware needed. Receive Dante video flows into applications, capture and send your PC's display, or quickly monitor video on the network. As part of the Dante AV family, Dante Studio utilizes Dante Controller for video routing and is instantly compatible with Dante-enabled devices.

With Dante Video RX, computers can receive a video signal directly from Dante AV transmitters such as Dante AV 4K-T, cameras, or other computers running Dante Studio on their network. Dante Video RX presents video streams as a webcam or video source to applications that support the DirectShow interface.

Dante Video TX allows you to capture a display connected to your PC and transmit the captured video over the Dante Network. This video stream can then be sent to Dante AV Ultra receivers such as Dante AV 4K-R or another instance of Dante Studio using either Dante Video RX to bring the video into applications or Video Viewer to view the video in a standalone app.

Dante Video Viewer is a standalone application that allows you to see and monitor a Dante video stream from any Dante AV enabled device or computer sharing its screen with Dante Video TX on the Dante network in real time.

### Dante Via

---

If you have a computer DAW workstation or any computer with audio applications that you would like to route to and from Dante AV 4K-T and 4K-R units, simply install the [Dante Via](#) on the DAW computer.

No special Dante hardware is required. Use [Dante Via](#) to configure audio devices to appear on the Dante network; for example, making the stereo audio portion of U-TAP appear as two audio source channels on the Dante network.

## Dante Virtual Soundcard

---

[Dante Virtual Soundcard](#) integrates a Windows or macOS computer into a Dante-powered audio workstation. It connects with the Dante network to record, process and playout up to 64 bidirectional channels of lossless audio, using any audio application and any combination of Dante-enabled devices.

Supports 16, 24 and 32-bit audio. Up to 64x64 audio channels @ 44.1/48kHz (up to 32x32 @ 88.2/96kHz, or up to 8x8 @ 176.4/192 kHz).

Dante Virtual Soundcard appears as a standard ASIO or WDM Sound device on Windows, and as a Core Audio sound device on macOS. No additional hardware or software is required.

## Third Party Software Applications

---

Many third-party software applications exist that contain built-in Dante connectivity to networked audio devices and programs. This means that each application has its own unique connections to Dante devices and can process audio independently on a single computer. Applications may perform any number of audio tasks, from recording to signal processing to visualization.

Consideration of these Third-Party Applications is beyond the scope of this manual, but there is plenty of available information online.

*NOTE: [Please see "Third Party Applications"](#) on the Audinate website for information.*

# Chapter 5 – Troubleshooting

---

## Troubleshoot Using the Dante AV 4K-T and 4K-R LEDs

---

The Dante AV 4K-T and 4K-R units include a generous set of color LED status indicators on both the front and rear of the units. For status LED locations and their respective behaviors, refer to "[LED Indicators](#)" on page 9 in this manual.

## Troubleshoot Using the Dante Controller Application

---

### Automatic Notification of Device Errors

---

Dante Controller is able to identify several types of problems that a Dante device may experience. A device that is found to have problems will have its device name displayed in red. Additional information about the problem can be found by double-clicking on the device.

A device displayed in **red** will either have entered failsafe mode, or will have an identified issue with its IP configuration. These states are described in more detail below.

A device displayed in **orange** ('Ultimo' low channel count devices only) will have entered upgrade mode (see below).

Additional helpful information includes:

- Incorrect IP address configuration
- Failsafe Mode
- Upgrade Mode
- Other Event Notifications

See the Automatic Notification of Device Errors section of "Audinate's Dante Controller User Guide," found at [https://dev.audinate.com/GA/dante-controller/userguide/webhelp/content/front\\_page.htm](https://dev.audinate.com/GA/dante-controller/userguide/webhelp/content/front_page.htm).

### On-Screen Warning and Error Indicators

---

The Dante Controller application provides warnings or error indicators in the User Interface for the following conditions. These can be extremely helpful in pinpointing problems or issues. Below we show one example.

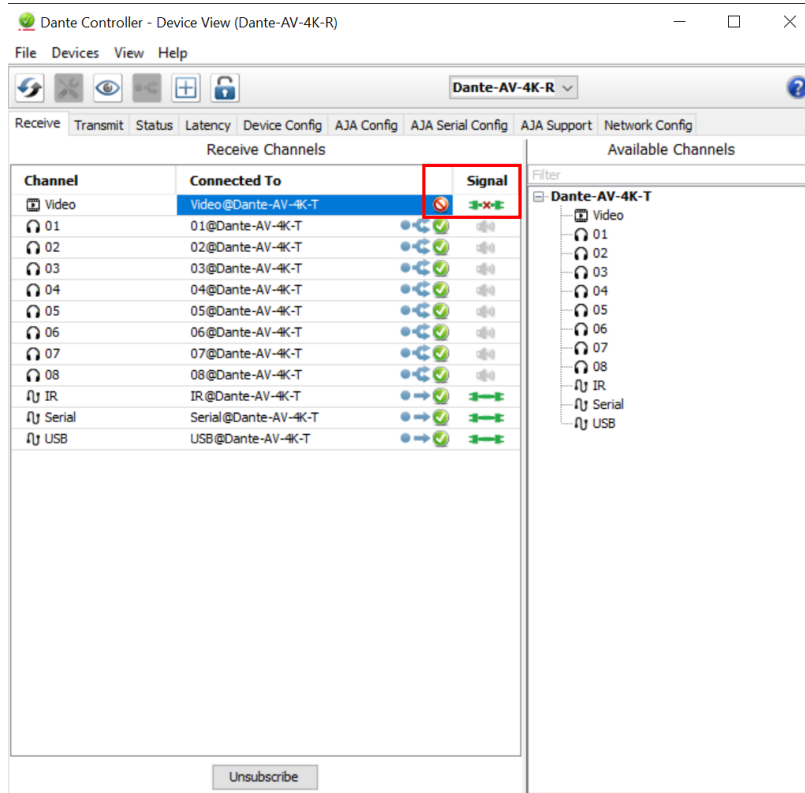
Error with Signal Connection Indicators.

---

Blocked Icon(s) appears instead of a green check mark(s), when making Connections in the Routing Tab, and in the Device View's Receive/Transmit tabs.

This is from two potential causes: if video, then either a signal that requires multicasting to add the connection to, or source video for the connection isn't actually connected to the 4K-T unit. If audio, it would be only the latter.

Figure 56. Video Signal Blocked in Receive Tab of Device View



Error Messages on Startup

Device Subscription warnings or errors

Event Classification Errors including

- Invalid link local address
- Subnet mismatch on Dante interface
- Subnet match with non Dante interface
- Multiple addresses with matching subnets
- Subnet conflict of Dante interface on primary
- Subnet conflict of Dante interface on secondary
- Unknown address error
- Fail Safe Mode
- Unknown device issue
- Elevation to Clock Leader
- Fanout Configuration detected
- Mismatched clock pullup subdomain
- Wrong subdomain for pullup
- Unknown subdomain
- Audio mute / Audio unmute
- Clock sync lock / unlocked

Event Classification Warnings

- Resolution Failed
- Elevation to Primary Leader
- Multiple external clock sources

- Cannot Elevate to Clock Leader
- Clock Sync Warning

#### Latency Errors

---

- Green, Amber or red on-screen "LEDs"

#### Packet Errors

---

- Red on-screen "LED"

#### Primary Interface Errors

---

- CRC check or packet errors

#### Status Bar Indicators:

---

- On-screen red or green "LEDs"
- Status of Primary Network
- Status of Secondary Network
- Event Log Status
- Clock Status Monitor

#### Receive Tab

---

- Colored Status Icons

#### Transmit Tab

---

- Colored Status Icons

## Computer Configuration

---

Before installing Dante Controller, you must be logged in to your computer as a user with administrator privileges.

To be correctly configured for use with a Dante network, the computer should have:

- Dante Controller installed
- The correct network interface/s selected
- The correct IP addresses in use
- Firewall configuration; third-party firewalls will need to be manually configured.

## Network Configuration

---

Although the automatic configuration and discovery features of the Dante AV 4K-T and Dante AV 4K-R devices are extremely powerful and robust, they nonetheless need to be connected to a network with appropriate ethernet cabling, routers and switches. Having a correct IP configuration on the host computer is also important.

### Troubleshooting Dante IP Address Configuration

---

All devices in a Dante AV network must be using IP addresses from the same network subnet. When using Dante Controller, your PC or Mac must be connected to the Primary Dante AV network, and must have a correct IP address.

*NOTE: If a device name is shown in red, it means Dante Controller has automatically detected an error condition, such as an IP address configuration issue, or the device has entered failsafe. Double-click the red device name to see more information.*

## Correct IP configuration

---

Dante AV 4K-T and 4K-R devices are set to obtain their IP address automatically from the network. They will either:

- Automatically assign themselves an address in the range 169.254.\*.\* (172.31.\*.\* for the secondary network if present), or
- Obtain an IP address from a DHCP server if it is present on the network

Your PC or Mac TCP/IP network configuration should be set to 'Obtain an IP address automatically'. This way it will automatically acquire a Link Local automatic IP address in the same network as other Dante devices. If a DHCP server is present, the computer and Dante devices will all acquire their IP addresses via DHCP.

## IP Network Configuration: Possible Mistakes

---

Possible network configuration errors are listed below. Dante Controller will try to automatically detect these. If detected the offending device will be displayed in red.

### Incorrect PC/Mac IP Configuration

---

- Accidentally having multiple network interfaces with addresses in the same subnet
- If your secondary network is using Link Local (no DHCP server), all devices on that network will be in the 172.31.\*.\* range. The secondary network interface for the computer must be manually configured (using static IP addressing) to the same range.

### Incorrect General IP Configuration

---

- Accidentally having multiple DHCP servers on the same network
  - Unusual – for example, someone may have a PC connected to the network with a DHCP server running that they're not aware of.
- Incorrectly configured static IP addresses
  - You shouldn't typically need to configure static IP addresses at all. If for some reason you do, it must be in the same subnet as the rest of the network.

## What are the symptoms of using the wrong network interface on my computer?

---

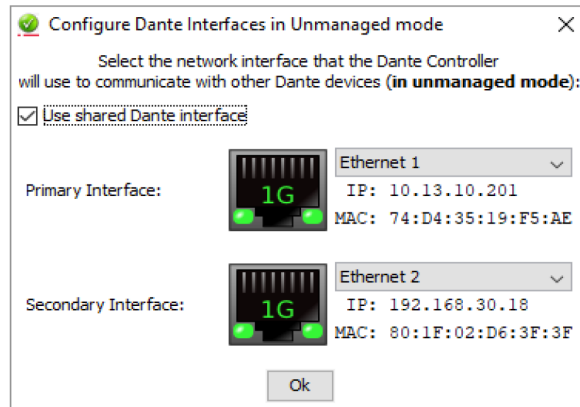
If you have more than one wired network interface, and Dante Controller is not using the interface the rest of the Dante devices are connected to:

- Dante Controller cannot see any Dante devices
- Dante Virtual Soundcard is not sending or receiving any audio when it is expected to

## How do I check which network interfaces Dante Controller is using?

- The selected network interfaces can be viewed or changed via the 'interface selection' button in the Network View toolbar of Dante Controller.

Figure 57. Configure Dante Interfaces in the unmanaged mode

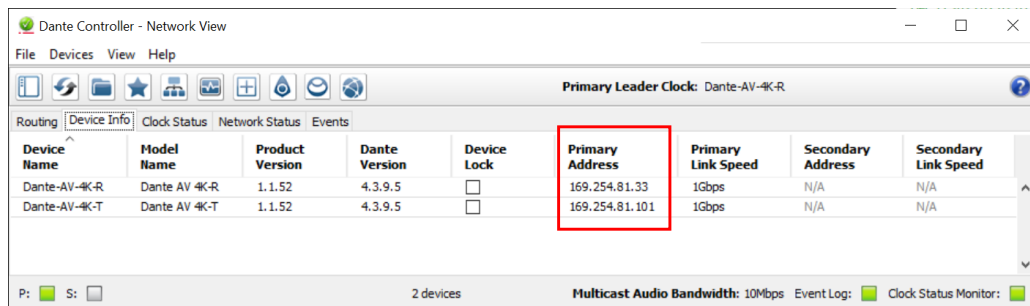


- If the Dante network is standalone and does not have a DHCP server installed, the addresses should be in the range 169.254.\*.\*
- If the Dante network is using a DHCP server, the IP addresses should conform to the addressing scheme it is using (as shown in the image above)

## How do I check IP addresses for all devices on my network?

- Use the Device Info tab to view the IP addresses of all the devices on your network.

Figure 58. Checking Primary Address



Device Name	Model Name	Product Version	Dante Version	Device Lock	Primary Address	Primary Link Speed	Secondary Address	Secondary Link Speed
Dante-AV-4K-R	Dante AV 4K-R	1.1.52	4.3.9.5	<input type="checkbox"/>	169.254.81.33	1Gbps	N/A	N/A
Dante-AV-4K-T	Dante AV 4K-T	1.1.52	4.3.9.5	<input type="checkbox"/>	169.254.81.101	1Gbps	N/A	N/A

- The Primary Address of all devices should follow the same IP address scheme (e.g. 169.254.\*.\* or 10.12.0.\*). Same for secondary addresses.

**NOTE:** Some older Dante devices or devices running older firmware may not show this information.

## Troubleshooting Switch Configuration and Cabling

Cables are the most vulnerable part of a network system. If you suspect cabling issues, check for:

- Faulty or manually terminated cables
- Unplugged or poorly connected Ethernet cables
- Incorrectly configured switches
- Dante devices removed or turned off

## Symptoms of Switch or Cabling Issues

---

- You cannot see (some) devices in the Dante Controller network view
- Dante Controller shows orange “unsuccessful subscription” icons, which usually means a device that was present earlier is now missing
- Faulty cables can lead to intermittent faults, which may be heard as dropped samples or “cracks” in the audio
- Dante devices may appear and disappear in Dante Controller

## Switch Checklist

---

- Is the switch EEE compliant? It may have known Dante network compatibility issues.

*NOTE:* See <https://www.audinate.com/learning/faqs/can-i-use-eee-energy-efficient-ethernet-or-green-ethernet-in-my-dante-network>

- Are all the connected link/status lights on the switch lit, or flashing as expected?
  - Is the switch powered on?
  - Is the cable correctly plugged in at the switch and the PC or equipment?
  - Is the switch correctly configured?
  - Perhaps QoS or VLANs have been incorrectly set up?
- Are you using a switch from another application with an unchecked or tested configuration?
  - Consult the switch manual and check the switch configuration

*NOTE:* Video (Dante AV) devices including the AJA Dante AV 4K-T and Dante AV 4K-R require at least GigE ports and cables.

## Available Dante Video Training by Audinate

Audinate offers comprehensive training videos that cover the extensive capabilities of the Dante Controller.

The video series "Getting Started with Dante" provides a high-level overview of Dante audio networking. Please refer to these videos to learn how to setup and use a Dante system:

*NOTE:* See <https://www.audinate.com/learning/training-certification/video-tutorials/video-series-getting-started-with-dante-audio-networking-training>

In addition, Audinate offers another video series, "Dante Controller 101," that goes over the essential functions and features of Dante Controller:

*NOTE:* See <https://www.audinate.com/learning/training-certification/video-tutorials/video-series-dante-controller-101>

# Appendix A – Specifications

---

## Dante AV 4K Tech Specs

---

### Video Formats

---

- (4K) 4096 x 2160p
- (UltraHD) 3840 x 2160p
- (2K) 2048 x 1080p
- (HD) 1920 x 1080p
- (HD) 1280 x 720p

#### VESA Formats:

- (WUXGA) 1920x1200
- (UXGA) 1600x1200
- (SXGA) 1280x1024
- (XGA) 1024x768

*NOTE: VESA Formats are always RGB 4:4:4 60 8-bit*

### Discovery, Registration and Control

---

- Dante Controller Software from Audinate (Windows or Mac)
- Dante Domain Manager Software from Audinate
- Dante Ecosystem Friendly: Compatible with existing Dante-enabled products

### Media Transport Interfaces

---

Network Interface: Standard 1 GigE Ethernet.

Audio Flow: Audio Flow x 8 Flows / 8-channels per Flow (unicast or multicast)

Video Flow: Video Flow x 1 Flow / 1-channel per Flow (unicast or multicast)

Timestamp: Hardware timestamping, supporting sample accurate playback

### Video Input Digital (4K-T)

---

- 1x 12G-SDI BNC, SMPTE 292 (1.5Gb/s), 424, 425-A(3Gb/s), 2081, 2082, 352 SDI Metadata Supported
  - YCbCr 4:2:2
  - 10-bit
  - Two Sample Interleave (2SI) 4K/UltraHD source mapping
- 1x 12G SDI
  - (4K) 4096 x 2160p 50, 59.94, 60
  - (UltraHD) 3840 x 2160p 50, 59.94, 60
- 1x 6G SDI
  - (4K) 4096 x 2160p 23.98, 24, 25, 29.97, 30
  - (UltraHD) 3840 x 2160p 23.98, 24, 25, 29.97, 30
- 1x 3G-SDI (Level A and Level B)
  - (2K) 2048x1080p 50, 59.94, 60
  - (HD) 1920x1080p 50, 59.94, 60
- 1x 1.5G-SDI
  - (2K) 2048x1080p 23.98, 24, 25, 29.97, 30
  - (HD) 1920x1080p 23.98, 24, 25, 29.97, 30

- (HD) 1280x720p 50, 59.94, 60
- 1x HDMI Type A connector, HDMI v2.0
  - YCbCr 4:4:4, 4:2:2
  - RGB 4:4:4, SMPTE or Full RGB.
  - 8, 10, 12-bit (4K/UltraHD 4:4:4 limited to 8-bit)
  - (4K) 4096 x 2160p 23.98, 24, 25, 29.97, 30, 50, 59.94, 60
  - (UltraHD) 3840 x 2160p 23.98, 24, 25, 29.97, 30, 50, 59.94, 60
  - (2K) 2048 x 1080p 23.98, 24, 25, 29.97, 30, 50, 59.94, 60
  - (HD) 1920 x 1080p 23.98, 24, 25, 29.97, 30, 50, 59.94, 60
  - (HD) 1280 x 720p 50, 59.94, 60
  - (WUXGA) 1920x1200
  - (UXGA) 1600x1200
  - (SXGA) 1280x1024
  - (XGA) 1024x768

Note: VESA Formats are always RGB 4:4:4 60 8-bit

#### Video Output Digital (4K-R)

- 1x 12G-SDI BNC, SMPTE 292 (1.5Gb/s), 424, 425-A(3Gb/s), 2081, 2082, 352 SDI Metadata Supported
  - YCbCr 4:2:2
  - 10-bit
  - Two Sample Interleave (2SI) 4K/UltraHD source mapping
- 1x 12G SDI
  - (4K) 4096x2160p 50, 59.94, 60
  - (UltraHD) 3840x2160p 50, 59.94, 60
- 1x 6G SDI
  - (4K) 4096x2160p 23.98, 24, 25, 29.97, 30
  - (UltraHD) 3840x2160p 23.98, 24, 25, 29.97, 30
- 1x 3G-SDI (Level A)
  - (HD) 1920x1080p 50, 59.94, 60
- 1x 1.5G-SDI
  - (HD) 1920x1080p 23.98, 24, 25, 29.97, 30
  - (HD) 1280x720p 50, 59.94, 60
- 1x HDMI Type A connector, HDMI v2.0\*
  - YCbCr 4:4:4, 4:2:2, SMPTE, or Full RGB
  - 8, 10, 12-bit (4K/UltraHD 4:4:4 limited to 8-bit)
  - (4K) 4096x2160p 23.98, 24, 25, 29.97, 30, 50, 59.94, 60
  - (UltraHD) 3840x2160p 23.98, 24, 25, 29.97, 30, 50, 59.94, 60
  - (HD) 1920x1080p 23.98, 24, 25, 29.97, 30, 50, 59.94, 60
  - (HD) 1280x720p 50, 59.94, 60
  - (WUXGA) 1920x1200
  - (UXGA) 1600x1200
  - (SXGA) 1280x1024
  - (XGA) 1024x768

#### Notes:

1. VESA Formats are always RGB 4:4:4 60 8-bit.
2. Only one input can be used at a time. Unit will auto-detect source, or user can select input in software if both SDI & HDMI inputs are connected.

\*If a connected monitor doesn't support HDMI protocol, the unit automatically switches to DVI protocol (which does not pass audio).

## Audio Input Digital (4K-T) & Audio Output Digital (4K-R)

---

- SDI embedded audio, 24-bit, 8-channel, 48 kHz PCM24
- HDMI embedded audio, 24-bit, 8-channel, 48 kHz PCM24

## Audio Output Analog

---

- 2x RCA analog audio
  - Levels at -10 dBu (nominal)

## IP Video Input (4K-R) & IP Video Output (4K-T)

---

- Dante AV Ultra
  - Single video channel

## IP Audio Input (4K-R) & IP Audio Output (4K-T)

---

- Dante Audio
  - Up to 8-channel audio, 24-bit per channel, 48 kHz PCM24
  - High quality, low jitter with onboard clock generator for audio
  - SRC Conversion Range: 1:8 to 8:1
  - ASRC Latency: 80 samples (1.6ms 48 kHz)

## Reference

---

- 1x BNC
  - (4K-T) Reference Out connector (For future use)
  - (4K-R) Reference Input connector allows output video timing to be locked to Video Input Reference Timing (Broadcast Mode Only)

## Codec

---

- Video Codec: Optimized implementation of JPEG 2000 codec in FPGA, Licensed By IntoPIX; Dante API management interface
- Audio Formats: Dante Audio over IP
- Bit Rates: Up to 700 Mbps
- Video Streaming: Unicast or Multicast
- Copy Protection: HDCP 2.2, HDCP 2.3 for network
- Latency: 0.5 frame (e.g., 2160p 60 Hz latency is < 8 ms between encoder and decoder), overall latency may increase depending on network configurations
- Bandwidth 1: 4Kp60 10-bit 4:2:2; 500-600Mbps, results may vary depending on network configuration and management settings
- Bandwidth 2: 1080p60 10-bit 4:2:2; 150-250Mbps, results may vary depending on network configuration and management settings

## Hardware Interface

---

- 1x Neutrik etherCon RJ45 Connector – 1 GigE (Dante AV & POE+)
- 1x Neutrik etherCon RJ45 Connector – 1 GigE (Dante Audio or Dante Controller - No POE+ Available)
- 1x DB-9 RS-422/ VISCA Serial Port
- 2x USB 2.0 Type A Connector
- 1x USB 2.0 Mini-B Host connector
- 3.5mm IR Tx jack for IR over IP
- 3.5mm IR Rx jack for IR over IP
- Front LED Indicators: Power, Codec, System, Status, Sync, & HDCP

## Size (W x D x H)

---

- 8.74" x 7.09" x 1.65" (222.0 x 180.09 x 41.91 mm).

## Weight

---

- 3.1 lbs. (1.5 kg).

## Power

---

- 30 Watts Maximum; 12V DC IN has priority over Ethernet 1 POE+. Ethernet 1 POE+ will become active a fraction of a second after 12V DC IN is disconnected.

## Environment

---

- Safe Operating Temperature: 0 to 40 C (32 to 104 F)
- Safe Storage Temperature (Power OFF): -40 to 60 C (-40 to 140 F)
- Operating Relative Humidity: 10-90% non condensing
- Operating Altitude: <3,000 meters (<10,000 feet).

# Appendix B – Safety and Compliance

---

## Federal Communications Commission (FCC) Compliance Notices

---

### Class A Interference Statement

---

This equipment has been tested and found to comply with the limits for a Class A digital device, pursuant to Part 15, Subpart B of the FCC Rules. These limits are designed to provide reasonable protection against harmful interference in a residential installation. This equipment generates, uses, and can radiate radio frequency energy and, if not installed and used in accordance with the instructions, may cause harmful interference to radio communications. However, there is no guarantee that interference will not occur in a particular installation. If this equipment does cause harmful interference to radio or television reception, which can be determined by turning the equipment off and on, the user is encouraged to try to correct the interference by one or more of the following measures:

- Reorient or relocate the receiving antenna.
- Increase the separation between the equipment and receiver.
- Connect the equipment into an outlet on a circuit different from that to which the receiver is connected.
- Consult the dealer or an experienced radio/TV technician for help.

### FCC Caution

---

This device complies with Part 15 of the FCC Rules. Operation is subject to the following two conditions: (1) This device may not cause harmful interference, and (2) this device must accept any interference received, including interference that may cause undesired operation.

## Canadian ICES Statement

---

### Canadian Department of Communications Radio Interference Regulations

This digital apparatus does not exceed the Class A limits for radio-noise emissions from a digital apparatus as set out in the Radio Interference Regulations of the Canadian Department of Communications. This Class A digital apparatus complies with Canadian ICES-003.

### Règlement sur le brouillage radioélectrique du ministère des Communications

Cet appareil numérique respecte les limites de bruits radioélectriques visant les appareils numériques de classe A prescrites dans le Règlement sur le brouillage radioélectrique du ministère des Communications du Canada. Cet appareil numérique de la Classe A est conforme à la norme NMB-003 du Canada.

## European Union, European Free Trade Association (EFTA) and United Kingdom Regulatory Compliance

---

This equipment may be operated in the countries that comprise the member countries of the European Union, European Free Trade Association and the United Kingdom. These countries, listed in the following paragraph, are referred to as The European Community throughout this document:

AUSTRIA, BELGIUM, BULGARIA, CROATIA, CZECH REPUBLIC, DENMARK, ESTONIA, FINLAND, FRANCE, GERMANY, GREECE, HUNGARY, ICELAND, IRELAND, ITALY, LATVIA, LIECHTENSTEIN, LITHUANIA, LUXEMBOURG, MALTA, NETHERLANDS, NORWAY, POLAND, PORTUGAL, REPUBLIC OF CYPRUS, ROMANIA, SLOVAK REPUBLIC, SLOVENIA, SPAIN, SWEDEN, SWITZERLAND, UNITED KINGDOM

## Declaration of Conformity

Marking by these symbols indicates compliance with the Essential Requirements of the EMC Directive of the European Union 2014/30/EU.



This equipment meets the following conformance standards:

### Safety

EN 62368-1: 2014 + A11 (T-Mark License),  
IEC 62368-1: 2014; (CB Scheme Certificate)

### Emissions

EN 55032: 2015 + A11: 2020, CISPR 32: 2015 + AMD1: 2019, EN 61000-3-2: 2019 + A1: 2021 + A2: 2024, EN 61000-3-3: 2013 + A2: 2021 + AC: 2022

### Immunity

EN 55035: 2017 + A11: 2020, CISPR 35: 2016, EN 61000-4-2: 2025,  
EN 61000-4-3: 2020, EN 61000-4-4: 2012, EN 61000-4-5: 2014 + A1: 2017,  
EN 61000-4-6: 2023, EN 61000-4-8: 2010, EN 61000-4-11: 2020 + AC: 2022

The product is also licensed for additional country specific standards as required for the International Marketplace



**Warning!** This is a Class A product. In a domestic environment, this product may cause radio interference, in which case, the user may be required to take appropriate measures.

**Achtung!** Dieses ist ein Gerät der Funkstörgrenzwertklasse A. In Wohnbereichen können bei Betrieb dieses Gerätes Rundfunkstörungen auftreten, in welchen Fällen der Benutzer für entsprechende Gegenmaßnahmen verantwortlich ist.

**Attention!** Ceci est un produit de Classe A. Dans un environnement domestique, ce produit risque de créer des interférences radioélectriques, il appartiendra alors à l'utilisateur de prendre les mesures spécifiques appropriées.

## Recycling Notice



This symbol on the product or its packaging indicates that this product must not be disposed of with your other household waste. Instead, it is your responsibility to dispose of your waste equipment by handing it over to a designated collection point for the recycling of waste electrical and electronic equipment. The separate collection and recycling of your waste equipment at the time of disposal will help conserve natural resources and ensure that it is recycled in a manner that protects human health and the environment. For more information about where you can drop off your waste for recycling, please contact your local authority, or where you purchased your product.

## Japanese Compliance Statement

この装置は、クラスA情報技術装置です。この装置を家庭環境で使用すると電波妨害を引き起こすことがあります。この場合には使用者が適切な対策を講ずるよう要求されることがあります。 VCCI-A

This is a Class A product based on the standard of the VCCI Council (VCCI 32: 2016). If this equipment is used in a domestic environment, radio interference may occur, in which case, the user may be required to take corrective actions.

## Translated Warning and Caution Messages

The following caution statements, warning conventions, and warning messages apply to this product and manual.



Warning Symbol



Hazard Symbol



Caution Symbol

## Before Operation Please Read These Instructions



**Warning!** Read and follow all warning notices and instructions marked on the product or included in the documentation.

**Avertissement!** Lisez et conformez-vous à tous les avis et instructions d'avertissement indiqués sur le produit ou dans la documentation.

**Warnung!** Lesen und befolgen Sie die Warnhinweise und Anweisungen, die auf dem Produkt angebracht oder in der Dokumentation enthalten sind.

**¡Advertencia!** Lea y siga todas las instrucciones y advertencias marcadas en el producto o incluidas en la documentación.

**Aviso!** Leia e siga todos os avisos e instruções assinalados no produto ou incluídos na documentação.

**Avviso!** Leggere e seguire tutti gli avvisi e le istruzioni presenti sul prodotto o inclusi nella documentazione.



**Warning!** Do not use this device near water and clean only with a dry cloth.

**Avertissement!** N'utilisez pas cet appareil près de l'eau et nettoyez-le seulement avec un tissu sec.

**Warnung!** Das Gerät nicht in der Nähe von Wasser verwenden und nur mit einem trockenen Tuch säubern.

**¡Advertencia!** No utilice este dispositivo cerca del agua y límpielo solamente con un paño seco.

**Aviso!** Não utilize este dispositivo perto da água e limpe-o somente com um pano seco.

**Avviso!** Non utilizzare questo dispositivo vicino all'acqua e pulirlo soltanto con un panno asciutto.



**Warning!** Do not block any ventilation openings. Install in accordance with the manufacturer's instructions.

**Avertissement!** Ne bloquez aucune ouverture de ventilation. Suivez les instructions du fabricant lors de l'installation.

**Warnung!** Die Lüftungsöffnungen dürfen nicht blockiert werden. Nur gemäß den Anweisungen des Herstellers installieren.

**¡Advertencia!** No bloquee ninguna de las aberturas de la ventilación. Instale de acuerdo con las instrucciones del fabricante.

**Aviso!** Não obstrua nenhuma das aberturas de ventilação. Instale de acordo com as instruções do fabricante.

**Avviso!** Non ostruire le aperture di ventilazione. Installare in conformità con le istruzioni del fornitore.



**Warning!** Do not install near any heat sources such as radiators, heat registers, stoves, or other apparatus (including amplifiers) that produce heat.

**Avertissement!** N'installez pas l'appareil près d'une source de chaleur telle que des radiateurs, des bouches d'air de chauffage, des fourneaux ou d'autres appareils (amplificateurs compris) qui produisent de la chaleur.

**Warnung!** Nicht in der Nähe von Wärmequellen wie Heizkörpern, Heizregistern, Öfen oder anderen Wärme erzeugenden Geräten (einschließlich Verstärkern) aufstellen.

**¡Advertencia!** No instale cerca de fuentes de calor tales como radiadores, registros de calor, estufas u otros aparatos (incluidos amplificadores) que generan calor.

**Aviso!** Não instale perto de nenhuma fonte de calor tal como radiadores, saídas de calor, fogões ou outros aparelhos (incluindo amplificadores) que produzam calor.

**Avviso!** Non installare vicino a fonti di calore come termosifoni, diffusori di aria calda, stufe o altri apparecchi (amplificatori compresi) che emettono calore.



**Warning!** Refer all servicing to qualified service personnel. Servicing is required when the device has been damaged in any way, such as power-supply cord or plug is damaged, liquid has been spilled or objects have fallen into the device, the device has been exposed to rain or moisture, does not operate normally, or has been dropped.

**Avertissement!** Référez-vous au personnel de service qualifié pour tout entretien. L'entretien est exigé quand l'appareil a été endommagé de quelque manière que ce soit, par exemple lorsque le cordon d'alimentation ou la prise sont endommagés, que du liquide a été versé ou des objets sont tombés dans l'appareil, que l'appareil a été exposé à la pluie ou à l'humidité, ne fonctionne pas normalement ou est tombé.

**Warnung!** Das Gerät sollte nur von qualifizierten Fachkräften gewartet werden. Eine Wartung ist fällig, wenn das Gerät in irgendeiner Weise beschädigt wurde, wie bei beschädigtem Netzkabel oder Netzstecker, falls Flüssigkeiten oder Objekte in das Gerät gelangen, das Gerät Regen oder Feuchtigkeit ausgesetzt wurde, nicht ordnungsgemäß funktioniert oder fallen gelassen wurde.

**¡Advertencia!** Consulte al personal calificado por cuestiones de reparación. El servicio de reparación se requiere cuando el dispositivo ha recibido cualquier tipo de daño, por ejemplo cable o espigas dañadas, se ha derramado líquido o se han caído objetos dentro del dispositivo, el dispositivo ha sido expuesto a la lluvia o humedad, o no funciona de modo normal, o se ha caído.

**Aviso!** Remeta todos os serviços de manutenção para o pessoal de assistência qualificado. A prestação de serviços de manutenção é exigida quando o dispositivo foi danificado mediante qualquer forma, como um cabo de alimentação ou ficha que se encontra danificado/a, quando foi derramado líquido ou caíram objectos sobre o dispositivo, quando o dispositivo foi exposto à chuva ou à humidade, quando não funciona normalmente ou quando foi deixado cair.

**Avviso!** Fare riferimento al personale qualificato per tutti gli interventi di assistenza. L'assistenza è necessaria quando il dispositivo è stato danneggiato in qualche modo, ad esempio se il cavo di alimentazione o la spina sono danneggiati, è stato rovesciato del liquido è stato rovesciato o qualche oggetto è caduto nel dispositivo, il dispositivo è stato esposto a pioggia o umidità, non funziona correttamente o è caduto.



**Warning!** Disconnect the external AC power supply line cord(s) from the mains power before moving the unit.

**Avertissement!** Retirez le ou les cordons d'alimentation en CA de la source d'alimentation principale lorsque vous déplacez l'appareil.

**Warnung!** Trennen Sie die Wechselstrom-Versorgungskabel vom Netzstrom, bevor Sie das Gerät verschieben.

**¡Advertencia!** Cuando mueva la unidad desenchufe de la red eléctrica el/los cable(s) de la fuente de alimentación CA tipo brick.

**Advertência!** Remova os cabos CA de alimentação brick da rede elétrica ao mover a unidade.

**Avvertenza!** Scollegare il cavo dell'alimentatore quando si sposta l'unità.



**Warning!** Only use attachments and accessories specified and/or sold by the manufacturer.

**Avertissement!** Utilisez seulement les attaches et accessoires spécifiés et/ou vendus par le fabricant.

**Warnung!** Verwenden Sie nur Zusatzgeräte und Zubehör angegeben und / oder verkauft wurde durch den Hersteller.

**¡Advertencia!** Utilice solamente los accesorios y conexiones especificados y/o vendidos por el fabricante.

**Aviso!** Utilize apenas equipamentos/acessórios especificados e/ou vendidos pelo fabricante.

**Avviso!** Utilizzare soltanto i collegamenti e gli accessori specificati e/o venduti dal produttore.



**Warning!** Do not defeat the safety purpose of the polarized or grounding-type plug. A polarized plug has two blades with one wider than the other. A grounding type plug has two blades and a third grounding prong. The wide blade or the third prong are provided for your safety. If the provided plug does not fit into your outlet, consult an electrician for replacement of the obsolete outlet.

**Avertissement!** La sécurité de la prise polarisée ou de la prise de type mise à la terre ne doit en aucun cas être empêchée de fonctionner. Une prise polarisée a deux broches, l'une étant plus large que l'autre. Une prise de type mise à la terre a deux broches et une troisième broche pour la mise à la terre. La broche large ou la troisième broche sont fournies pour votre sécurité. Si la prise fournie ne s'insère pas dans votre prise femelle, consultez un électricien pour le remplacement de la prise femelle obsolète.

**Warnung!** Der Sicherheitszweck des gepolten bzw. Schukosteckers ist zu berücksichtigen. Ein gepolter Stecker verfügt über zwei Pole, von denen einer breiter als der andere ist. Ein Schukostecker verfügt neben den zwei Polen noch über einen dritten Pol zur Erdung. Der breite Pol bzw. der Erdungspol dienen der Sicherheit. Wenn der zur Verfügung gestellte Stecker nicht in Ihren Anschluss passt, konsultieren Sie einen Elektriker, um den veralteten Anschluss zu ersetzen.

**¡Advertencia!** No eche por tierra la finalidad del tipo de enchufe polarizado con conexión a tierra. Un enchufe polarizado tiene dos espigas, una más ancha que la otra. Un enchufe con conexión a tierra tiene dos espigas iguales y una tercera espiga que sirve para la conexión a tierra. La espiga ancha, o la tercera espiga, sirven para su seguridad. Si el enchufe suministrado no encaja en el tomacorriente, consulte con un electricista para reemplazar el tomacorriente obsoleto.

**Aviso!** Não anule a finalidade da segurança da ficha polarizada ou do tipo ligação terra. Uma ficha polarizada tem duas lâminas sendo uma mais larga do que a outra. Uma ficha do tipo de ligação à terra tem duas lâminas e um terceiro terminal de ligação à terra. A lâmina larga ou o terceiro terminal são fornecidos para sua segurança. Se a ficha fornecida não couber na sua tomada, consulte um electricista para a substituição da tomada obsoleta.

**Avviso!** Non compromettere la sicurezza della spina polarizzata o con messa a terra. Una spina polarizzata ha due spinotti, di cui uno più largo. Una spina con messa a terra ha due spinotti e un terzo polo per la messa a terra. Lo spinotto largo o il terzo polo sono forniti per motivi di sicurezza. Se la spina fornita non si inserisce nella presa di corrente, contattare un elettricista per la sostituzione della presa obsoleta.



**Warning!** Since the Mains plug is used as the disconnection for the device, it must remain readily accessible and operable.

**Avertissement!** Puisque la prise principale est utilisée pour débrancher l'appareil, elle doit rester aisément accessible et fonctionnelle.

**Warnung!** Da der Netzstecker als Trennvorrichtung dient, muss er stets zugänglich und funktionsfähig sein.

**¡Advertencia!** Puesto que el enchufe de la red eléctrica se utiliza como dispositivo de desconexión, debe seguir siendo fácilmente accesible y operable.

**Aviso!** Dado que a ficha principal é utilizada como a desconexão para o dispositivo, esta deve manter-se prontamente acessível e funcional.

**Avviso!** Poiché il cavo di alimentazione viene usato come dispositivo di sconnessione, deve rimanere prontamente accessibile e operabile.



**Warning!** Protect the power cord from being walked on or pinched particularly at plugs, convenience receptacles, and the point where they exit from the device.

**Avertissement!** Protégez le cordon d'alimentation pour que l'on ne marche pas dessus ou qu'on le pince, en particulier au niveau des prises mâles, des réceptacles de convenance, et à l'endroit où il sort de l'appareil.

**Warnung!** Vermeiden Sie, dass auf das Netzkabel getreten oder das Kabel geknickt wird, insbesondere an den Steckern, den Steckdosen und am Kabelausgang am Gerät.

**¡Advertencia!** Proteja el cable de corriente para que no se le pise ni apriete, en especial cerca del enchufe, los receptáculos de conveniencia y el punto del que salen del equipo.

**Aviso!** Proteja o cabo de alimentação de ser pisado ou de ser comprimido particularmente nas fichas, em tomadas de parede de conveniência e no ponto de onde sai do dispositivo.

**Avviso!** Proteggere il cavo di alimentazione in modo che nessuno ci cammini sopra e che non venga schiacciato soprattutto in corrispondenza delle spine e del punto in cui esce dal dispositivo.



**Warning!** Unplug this device during lightning storms or when unused for long periods of time.

**Avertissement!** Débranchez cet appareil pendant les orages avec éclairs ou s'il est inutilisé pendant de longues périodes.

**Warnung!** Das Gerät ist bei Gewitterstürmen oder wenn es über lange Zeiträume ungenutzt bleibt vom Netz zu trennen.

**¡Advertencia!** Desenchufe este dispositivo durante tormentas eléctricas o cuando no se lo utilice por largos periodos del tiempo.

**Aviso!** Desconecte este dispositivo da tomada durante trovoadas ou quando não é utilizado durante longos períodos de tempo.

**Avviso!** Utilizzare soltanto i collegamenti e gli accessori specificati e/o venduti dal produttore, quali il treppiedi e l'esoscheletro.



**Warning!** Do not open the chassis. There are no user-serviceable parts inside. Opening the chassis will void the warranty unless performed by an AJA service center or licensed facility.

**Avertissement!** Ne pas ouvrir le châssis. Aucun élément à l'intérieur du châssis ne peut être réparé par l'utilisateur. La garantie sera annulée si le châssis est ouvert par toute autre personne qu'un technicien d'un centre de service ou d'un établissement agréé AJA.

**Warnung!** Öffnen Sie das Gehäuse nicht. Keine der Geräteteile können vom Benutzer gewartet werden. Durch das Öffnen des Gehäuses wird die Garantie hinfällig, es sei denn, solche Wartungsarbeiten werden in einem AJA-Service-Center oder einem lizenzierten Betrieb vorgenommen.

**¡Advertencia!** No abra el chasis. El interior no contiene piezas reparables por el usuario. El abrir el chasis anulará la garantía a menos que se lo haga en un centro de servicio AJA o en un local autorizado.

**Advertência!** Não abra o chassi. Não há internamente nenhuma peça que permita manutenção pelo usuário. Abrir o chassi anula a garantia, a menos que a abertura seja realizada por uma central de serviços da AJA ou por um local autorizado.

**Avvertenza!** Non aprire lo chassis. All'interno non ci sono parti riparabili dall'utente. L'apertura dello chassis invaliderà la garanzia se non viene effettuata da un centro ufficiale o autorizzato AJA.

# Warranty and Liability Information

---

## Limited Warranty on Hardware

---

AJA Video Systems, Inc. (AJA Video) warrants that the hardware product, not including software components, will be free from defects in materials and workmanship for a period of five years from the date of purchase. AJA Video provides a separate software warranty as part of the license agreement applicable to software components.

If the Customer brings a valid claim under this limited warranty for a hardware product (hereafter, a “product”) during the applicable warranty period, AJA Video will, at its sole option and as the Customer’s sole remedy for breach of the above warranty, provide one of the following remedies:

- Repair or facilitate the repair the product within a reasonable period of time, free of charge for parts and labor.
- Replace the product with a direct replacement or with a product that performs substantially the same function as the original product.
- Issue a refund of the original purchase price less depreciation to be determined based on the age of the product at the time remedy is sought under this limited warranty.

To obtain service under this warranty, the Customer must notify AJA Video of the defect before expiration of the warranty period and make suitable arrangements for the performance of service by contacting AJA Video support through the channels set forth on the support contacts web page at <https://www.aja.com/support>. Except as stated, the Customer shall bear all shipping, packing, insurance and other costs, excluding parts and labor, to effectuate repair. Customer shall pack and ship the defective product to a service center designated by AJA Video, with shipping charges prepaid. AJA Video shall pay to return the product to Customer, but only if to a location within the country in which the AJA Video service center is located. **SOME JURISDICTIONS DO NOT ALLOW THE EXCLUSION OF IMPLIED WARRANTIES OR LIMITATIONS ON APPLICABLE STATUTORY RIGHTS OF A CONSUMER, SO SOME OR ALL OF THE TERMS OF THIS PARAGRAPH MAY NOT APPLY TO YOU.**

## Limitation of Liability

---

Under no circumstances shall AJA video BE LIABLE IN ANY WAY FOR ANY LOST, CORRUPTED OR DESTROYED DATA, FOOTAGE OR WORK, OR FOR ANY OTHER INDIRECT, SPECIAL, INCIDENTAL OR CONSEQUENTIAL DAMAGES OR LOST PROFITS, OR FOR ANY THIRD PARTY CLAIM, IN CONNECTION WITH THE PRODUCT, WHETHER RESULTING FROM DEFECTS IN THE PRODUCT, SOFTWARE OR HARDWARE FAILURE, OR ANY OTHER CAUSE WHATSOEVER, EVEN IF AJA VIDEO HAS BEEN ADVISED OF THE POSSIBILITY OF SUCH DAMAGES. AJA VIDEO’S LIABILITY IN CONNECTION WITH THE PRODUCT SHALL UNDER NO CIRCUMSTANCES EXCEED THE PURCHASE PRICE PAID FOR THE PRODUCT. The foregoing limitations apply even if any remedy set forth in this LIMITED WARRANTY fails of its essential purpose. **SOME JURISDICTIONS DO NOT ALLOW THE LIMITATION OF LIABILITY FOR PERSONAL INJURY, OR OF INCIDENTAL OR CONSEQUENTIAL DAMAGES, SO SOME OR ALL OF THE TERMS OF THIS PARAGRAPH MAY NOT APPLY TO YOU.**

## Governing Law and Language; Your Rights

---

This limited warranty is the only warranty provided by AJA Video on the hardware product. It supersedes all prior or contemporaneous understandings regarding such subject matter. No amendment to or modification of this warranty will be binding unless in writing and signed by AJA Video. The laws of the State of California, USA will govern this warranty and any dispute arising from it. Any translation of this Agreement is intended for convenience and to meet local requirements and in the event of a dispute between the English and any non-English versions, the English version of this warranty will govern. This limited warranty gives you specific legal rights and you may have other rights that vary from jurisdiction to jurisdiction, some of which are noted above.

# Software License Agreement

---

AJA VIDEO SYSTEMS, INC.

THIS IS AN AGREEMENT BETWEEN YOU AND AJA VIDEO SYSTEMS, INC. ("AJA") THAT GOVERNS YOUR USE OF the software ACCOMPANYING THIS LICENSE (E.G., AS installed on the device with which this license is provided).

The "AJA Software" referenced in this Agreement includes all such software, whether made available to you on disk, in read only memory, on any other media or in any other form, and all updates, corrections, enhancements and new versions of such software made available by AJA, together with all related documentation. BY INSTALLING OR USING THE AJA SOFTWARE, YOU ARE AGREEING TO BE BOUND BY THE TERMS OF THIS AGREEMENT. IF YOU DO NOT AGREE TO THE TERMS OF THIS AGREEMENT, DO NOT INSTALL OR USE IT AND, IF APPLICABLE, RETURN THE AJA SOFTWARE TO THE PLACE WHERE YOU OBTAINED IT FOR A REFUND.

1. License Grant. AJA hereby grants you a nonexclusive, personal, non-sublicenseable and limited license to install and use AJA Software on a computer or AJA device. The foregoing license also includes the right to make copies of the AJA Software in machine-readable form for installation and backup purposes only, and provided that each copy you make must include all copyright or other proprietary notices contained on the original.

2. Limitations. You may not decompile, reverse engineer, disassemble, modify, or create derivative works of the AJA Software or any part thereof except to the extent (if any) authorized by applicable law notwithstanding the foregoing restriction. You may not rent, lease, lend, loan, distribute or act as a service bureau or "cloud service" provider with respect to use of the AJA Software or any functionality thereof. THE AJA SOFTWARE IS NOT INTENDED FOR USE IN THE OPERATION OF NUCLEAR FACILITIES, AIRCRAFT NAVIGATION OR COMMUNICATION SYSTEMS, AIR TRAFFIC CONTROL SYSTEMS, LIFE SUPPORT MACHINES OR OTHER EQUIPMENT IN WHICH THE FAILURE OF THE AJA SOFTWARE COULD LEAD TO DEATH, PERSONAL INJURY, OR SEVERE PHYSICAL OR ENVIRONMENTAL DAMAGE.

3. Reservation of Rights. The AJA Software is protected by law, including without limitation copyright law. The AJA Software is licensed, not sold, to you. AJA and its licensors reserve all rights not expressly granted to you by this Agreement. You own the media on which the AJA Software is recorded but AJA and/or AJA's licensor(s) retain ownership of the AJA Software itself. You may not use the AJA Software for any illegal purpose.

4. Transfer. You may make a one-time permanent transfer of all of your license rights to the AJA Software to another person or entity, provided that: (a) you transfer all of the AJA Software, including all its component parts, original media, printed materials and this Agreement; (b) you do not retain any copies of the AJA Software, including any copies stored on a computer or other device; and (c) you transfer the AJA Software subject to this Agreement, and the person or entity receiving the AJA Software accepts the terms and conditions of this Agreement.

5. NFR (Not for Resale) Copies and Add-On Features: Notwithstanding anything to the contrary in this Agreement, (a) AJA Software that is labeled "Not for Resale" or otherwise provided to you on a promotional or demonstration basis may be used only for your demonstration, testing and evaluation purposes and may not be resold or transferred; and (b) AJA may make available certain software components ("Add-On Features") under separate terms and conditions, in which case those separate terms and conditions apply and the Add-On Features are not considered AJA Software under this Agreement.

6. Termination. Your rights in the AJA Software are conditioned on complying with this Agreement, and those rights (together with this Agreement) will terminate automatically, without notice from AJA, if you fail to comply with any term(s) of this Agreement. Upon termination of this Agreement, you must cease all use of the AJA Software and destroy all copies, full or partial, of the AJA Software in your possession or control.

7. Limited Warranty on AJA Software. If you comply with all terms of this Agreement and use the AJA Software in accordance with its documentation, and you install any patches or other updates made available to the AJA Software by AJA, AJA warrants that the AJA Software will perform substantially in accordance with its documentation for a period of ninety (90) days from the date of your original retail purchase. Your exclusive remedy under this warranty will be, at AJA's option, a refund of the purchase

price of the product containing the AJA Software or an update to or replacement of the AJA Software (or applicable component of it). THIS LIMITED WARRANTY AND ANY IMPLIED WARRANTIES ON THE AJA SOFTWARE INCLUDING, BUT NOT LIMITED TO, ANY WARRANTIES OF MERCHANTABILITY, OF SATISFACTORY QUALITY, OR OF FITNESS FOR A PARTICULAR PURPOSE, ARE LIMITED IN DURATION TO NINETY (90) DAYS FROM THE DATE OF ORIGINAL RETAIL PURCHASE. SOME JURISDICTIONS DO NOT ALLOW LIMITATIONS ON HOW LONG A WARRANTY LASTS, SO THE ABOVE LIMITATION MAY NOT APPLY TO YOU. THIS LIMITED WARRANTY GIVES YOU SPECIFIC LEGAL RIGHTS, AND YOU MAY ALSO HAVE OTHER RIGHTS WHICH VARY BY JURISDICTION.

8. Disclaimer of Other Warranties on Aja Software. EXCEPT FOR THE LIMITED WARRANTY ON AJA SOFTWARE SET FORTH ABOVE, AJA AND AJA'S LICENSORS (COLLECTIVELY REFERRED TO AS "AJA" FOR THE PURPOSES OF SECTIONS 8 AND 9) HEREBY DISCLAIM ALL WARRANTIES AND CONDITIONS WITH RESPECT TO THE AJA SOFTWARE, WHETHER EXPRESS, IMPLIED OR STATUTORY, INCLUDING, BUT NOT LIMITED TO, THE IMPLIED WARRANTIES AND/OR CONDITIONS OF MERCHANTABILITY, OF SATISFACTORY QUALITY, OF FITNESS FOR A PARTICULAR PURPOSE, OF ACCURACY, AND OF QUIET ENJOYMENT. FURTHER, AJA DOES NOT MAKE ANY WARRANTY REGARDING NON-INFRINGEMENT OF THIRD PARTY RIGHTS. SUBJECT ONLY TO THE LIMITED WARRANTY SET FORTH IN SECTION 7, YOU EXPRESSLY ACKNOWLEDGE AND AGREE THAT USE OF THE AJA SOFTWARE IS AT YOUR SOLE RISK. AJA DOES NOT WARRANT AGAINST INTERFERENCE WITH YOUR ENJOYMENT OF THE AJA SOFTWARE, THAT THE AJA SOFTWARE WILL MEET YOUR REQUIREMENTS, THAT THE OPERATION OF THE AJA SOFTWARE WILL BE UNINTERRUPTED OR ERROR-FREE, OR THAT DEFECTS IN THE AJA SOFTWARE WILL BE CORRECTED. NO ORAL OR WRITTEN INFORMATION OR ADVICE GIVEN BY AJA OR AN AJA AUTHORIZED REPRESENTATIVE WILL CREATE A WARRANTY. SOME JURISDICTIONS DO NOT ALLOW THE EXCLUSION OF IMPLIED WARRANTIES OR LIMITATIONS ON APPLICABLE STATUTORY RIGHTS OF A CONSUMER, SO SOME OR ALL OF THE TERMS OF THIS PARAGRAPH MAY NOT APPLY TO YOU.

9. Limitation of Liability. TO THE EXTENT NOT PROHIBITED BY LAW, IN NO EVENT WILL AJA BE LIABLE FOR PERSONAL INJURY, OR ANY INCIDENTAL, SPECIAL, INDIRECT OR CONSEQUENTIAL DAMAGES OR LOST PROFITS WHATSOEVER, INCLUDING, WITHOUT LIMITATION, DAMAGES FOR LOSS OF DATA, BUSINESS INTERRUPTION OR ANY OTHER COMMERCIAL DAMAGES OR LOSSES, ARISING OUT OF OR RELATED TO YOUR USE OR INABILITY TO USE THE AJA SOFTWARE, HOWEVER CAUSED, REGARDLESS OF THE THEORY OF LIABILITY (E.G., WHETHER UNDER CONTRACT, TORT OR OTHERWISE) AND EVEN IF AJA HAS BEEN ADVISED OF THE POSSIBILITY OF SUCH DAMAGES. In no event will AJA's total liability to you for all damages (INCLUDING WITHOUT LIMITATION BREACH OF WARRANTY) exceed the amount of fifty dollars (\$50.00). The foregoing limitations will apply even if the any remedy set forth in this agreement fails of its essential purpose. SOME JURISDICTIONS DO NOT ALLOW THE LIMITATION OF LIABILITY FOR PERSONAL INJURY, OR OF INCIDENTAL OR CONSEQUENTIAL DAMAGES, SO SOME OR ALL OF THE TERMS OF THIS PARAGRAPH MAY NOT APPLY TO YOU.

10. Export Law Assurances. You may not use or otherwise export or reexport the AJA Software except as authorized by United States law and the laws of the jurisdiction in which the AJA Software was obtained. In particular, but without limitation, the AJA Software may not be exported or re-exported (a) into (or to a national or resident of) any U.S. embargoed countries, or (b) to anyone on the U.S. Treasury Department's list of Specially Designated Nationals or the U.S. Department of Commerce Denied Persons List or Entity List or any similar legal designation. By using the AJA Software, you represent and warrant that you are not located in, under control of, or a national or resident of any such country or on any such list.

11. Government End Users. The AJA Software including its documentation is a "Commercial Item", as that term is defined at 48 C.F.R. § 2.101, consisting of "Commercial Computer Software" and "Commercial Computer Software Documentation", as such terms are used in 48 C.F.R. § 12.212 or 48 C.F.R. § 227.7202 (or their successors), as applicable. Consistent with these provisions, the AJA Software is licensed to U.S. Government end users (a) only as a Commercial Item and (b) with only those rights as are granted to all other end users pursuant to this Agreement. Unpublished-rights reserved under the copyright laws of the United States.

12. Controlling Law and Severability. This Agreement will be governed by and construed in accordance with the laws of the State of California, as applied to agreements entered into and to be performed entirely within California between California residents. This Agreement will not be governed by the United Nations

Convention on Contracts for the International Sale of Goods, the application of which is expressly excluded. If for any reason a court of competent jurisdiction finds any provision, or portion thereof, to be unenforceable, the remainder of this Agreement will continue in full force and effect.

13. Complete Agreement; Governing Language. This Agreement constitutes the entire agreement between the parties with respect to the use of the AJA Software licensed hereunder and supersedes all prior or contemporaneous understandings regarding such subject matter. No amendment to or modification of this Agreement will be binding unless in writing and signed by AJA. Any translation of this Agreement is intended for convenience and to meet local requirements and in the event of a dispute between the English and any non-English versions, the English version of this Agreement will govern.

# Index

## Symbols

11 66

## A

Advantages of IR-Over-IP 42  
Advantages of Serial Control Over IP 44  
Advantages of USB Over IP 46  
AJA Dante Audio Equipment 15  
AJA Support 2  
Already Familiar with Dante Controller for Audio? 34  
Applying Presets 49  
Audio Input or Output IP 70  
Audio Routing 41  
Automatic Discovery 19  
Automatic network configuration 19  
Automatic Notification of Device Errors 62

## B

Base and Surface Mount Installation 13

## C

Cabling 14  
Checking for Updates Automatically 59  
Codec 70  
Compatibility 6  
Computer Configuration 64  
Contacting AJA Support 2  
Correct IP configuration 65  
Create a Multicast 37, 38

## D

Dante Applications for PC or Mac 60  
Dante Audio 5  
Dante AV 4K-R AJA HDR Support 31  
Dante AV 4K-R Connectors 8  
Dante AV 4K-R Rear Panel LEDs 11  
Dante AV 4K-T and Dante AV 4K-R Front Panel LEDs 9  
Dante AV 4K-T Connectors 7  
Dante AV 4K-T Rear Panel LEDs 10  
Dante AV Ultra 5  
Dante Controller 60  
    Training Videos 67  
Dante Controller Software 16  
Dante Firmware Update Manager Application 67  
Dante Studio Applications (Windows Only) 61  
Dante Updater Application 67  
Dante Via 60

Dante Video Training by Audinate 67  
Dante Virtual Soundcard 61  
Device Roles 48  
Digital Video Playback and Recording Devices 15  
Discovery and Auto-Configuration 18  
Discovery, Registration and Control 68  
DO NOT STACK 13

## E

Energy Efficient Ethernet (EEE) Switches 67  
Environment 71  
Events Tab 67  
Expected Bandwidth 6

## F

FailSafe Tab 58  
Familiar with Dante Controller for Audio? 35  
Features 5  
Flows 35

## G

Guidelines for Using the Ethernet Ports 18

## H

Hardware Component Requirements 16  
HDR Workflow Support 6  
History Tab 58  
Home Tab 57  
How do I check IP addresses 66

## I

Implementing IR-Over-IP 42  
Implementing Serial Control Over IP 44  
Implementing USB Over IP 46  
Importing Files to Dante Updater 59  
Incorrect General IP Configuration 65  
Incorrect PC/Mac IP Configuration 65  
Installation 13  
Installing Dante Controller 17  
Interoperability 60  
Introduction to Video Multicasting 36  
I/O Connections 7  
IP Network Configuration: Possible Mistakes 65  
IR-Over-IP Dante Controller Routing 43  
IR-Over-IP Setups 42

## J

JPEG 2000 Video Codec 6

## K

KVM 46  
KVM: USB over IP 46

## L

Launch and Use Dante Controller 18  
Launching Dante Controller 19  
LED Indicators 9  
Library Tab 58  
Live Concert Touring System 62

## M

Media Transport Interfaces 68  
Mini-Guide to Dante Controller 67  
Multicasting a Dante AV 4K-T 37

## N

Network Configuration 64  
nfrared: IR-Over-IP 42  
Notices 2

## O

On-Screen Warning and Error Indicators 62  
Opening AJA Config Tab for Dante AV 4K-T 23  
Optional Equipment and Software to Prepare 15  
Overview 5  
Overview of the Dante Controller Application 20

## P

Parts List 13  
Physical Setup 13  
Power 71  
Power Up 18

## Q

Quick Start Guide 67

## R

Rack Mount Installation 14  
Reference 70  
Required Software 16  
Requirements 13  
Routing For Video Devices 36, 37  
Routing Video With Multicast 39

## S

Safety and Compliance 72  
Saving Presets 49  
Serial Control over IP 44

- Serial-Over-IP Dante Controller
  - Routing 45
- Serial-Over-IP: Example PTZ Camera Setups 44
- Size (W x D x H) 70
- Specifications 68
- Switch Checklist 67
- Symptoms of Switch or Cabling Issues 67
- symptoms of using the wrong network interface 65
- System Setup 14

## T

- Technical Support 67
- Tech Specs 68
- Third Party Software Applications 61
- Trademarks 2
- Troubleshooting 62
- Troubleshooting Dante IP Address Configuration 65
- Troubleshooting Switch Configuration and Cabling 66
- Troubleshoot Using the Dante AV 4K-T/R LEDs 62
- Troubleshoot Using the Dante Controller Application 62

## U

- Unpacking 13
- USB-Over-IP Dante Controller
  - Routing 47
- USB Over IP Setups for KVM 46
- User Controls 13
- User Interface 70
- User Presets 48, 67
- Using Dante Controller 18, 19
- Using POE+ 18

## V

- Video Channels are Routed like Audio Channels 35
- Video Channels Are Unicast by Default 36
- Video Codecs 6
- Video Formats 68
- Video Input or Output IP 69
- Video Input & Output Digital 68
- Video Signal Enhancement 15
- Video Transport 6

## W

- Warranty and Liability Information 79
- Weight 71
- What can I do with Presets? 48
- When are Presets Helpful? 48