

Read Me First

Read This Bulletin Before KONA 2 Installation

KONA 2



KONA 2 Installation and Operation Manual

The KONA 2 Installation and Operation Manual is located on the Software CD shipped with KONA 2. The manual is a PDF that you can drag and drop onto your Mac hard drive or read directly from the CD. Adobe Acrobat reader is required to view the file. To provide you with the best documentation possible, AJA will periodically update the manual and place the latest version on the KONA Support page on the AJA website. Check this URL location for the latest version:

http://www.aja.com/support_kona.html

This manual covers the installation and operation of KONA 2 and K-Box and discusses using it with Final Cut Pro and other applications.

Latest Software and Release Notes

To ensure you are running the very latest KONA 2 software, also check the KONA support page for software notices, answers to frequently asked questions (FAQs), and new software versions: *http://www.aja.com/support_kona.html*

If You're Upgrading From Another Brand of Video Card

If your PowerMac has previously had another video capture or multimedia card installed, ensure you remove the card and uninstall any related software before installing KONA 2. This will prevent any hardware or software conflicts.

Note: KONA 2 will operate properly on a PowerMac that also has an AJA Io installed.

— More —

If You're Upgrading From KONA SD or KONA HD

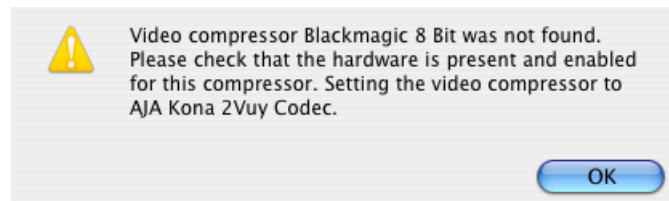
PCI-X Slots

When using the older KONA SD/HD cards, users were advised to put the KONA card and RAID controller on the same bus. This is not true for KONA 2; as explained in the KONA 2 manual, you should put the KONA 2 on a separate PCI-X bus (133 MHz or 100 MHz) from the RAID Controller. AJA suggests that if you have a fast RAID controller (PCI-X 133) you should put it in the G5 PCI-133 MHz slot and then put the KONA 2 in one of the 100 MHz slots.

Using Previously Captured Material

A KONA 2 can be used to play back Final Cut Pro sequences and captured clips from KONA HD and KONA SD. If you have a sequence created with the "Blackmagic 8-bit" or "Blackmagic 10-bit" codecs, the first time you open the sequence with KONA 2 you should immediately open the Final Cut Pro "Sequence Settings...", and change the Compressor popup to "AJA Kona 2Vuy Codec" (8-bit) or "Uncompressed 10-bit 4:2:2" (10-bit). Afterward, click *OK* and save the project.

Note: when you open the Sequence Settings dialog, Final Cut Pro may post a warning similar to this:



Click "OK", then verify that "AJA Kona 2Vuy Codec" is selected in the Sequence Settings Compressor popup. Be sure to close the Sequence Settings dialog by clicking "OK", and then save the project.

To Keep Your Existing Easy Setups

The AJA Kona Software installer will overwrite all of the files in the KONA 2 Easy Setups folder, located in the /Library/Final Cut Pro System Support directory. If you have stored any Easy Setup files of your own in this folder, or if you have changed any of the AJA-installed settings and wish to keep them, we recommend making a copy of this folder before running the KONA Software installer. After the installation is finished, you may copy any files you wish to keep back into the KONA 2 Easy Setups folder.