

AJA IPR-10G-HDMI

Release Notes - v1.1

General

This release of firmware v1.1 for IPR-10G-HDMI contains some important feature enhancements.

Note that the (separate) IPR-10G-HDMI manual has also been updated for the v1.1 firmware release, and contains a handy FAQ in the appendix.

Requirements and Recommendations

AJA firmware

- This firmware version is compatible with AJA IPR-10G-HDMI.

Operating System

- The firmware on the unit can be updated by connecting the IPR-10G-HDMI to a PC or Mac via USB and running eMini-Setup as detailed below.
- Windows 10 and macOS 10.13.x (High Sierra) are recommended for initial setup

New Features in v1.1

- Support for UltraHD 23.976p, 24p, 25p, 29.97p, 30p at 10-bit, 4:2:2 (additional to existing support for HD up to 60p at 10-bit, 4:2:2)
- Support for NMOS (discovery, registration and control)
- Support for Ember Plus (control only, discovery and registration are handled manually)
- PTP optimizations

Features introduced with prior releases

v1.0

- SMPTE ST 2110 IP Video and Audio to HDMI Converter
- 1x RJ-45 (IEC 60603-7) for 10/100/1000 Base-T Ethernet for control
- 1x SFP+ Cage for 10G Ethernet media, control, and timing input – SFP+ modules not included
- Essence support: SMPTE 2110-10, 2110-20, 2110-30
- Rugged, fanless, portable design
- Full size HDMI 1.4b video output: Deep Color 30- and 36-bit video per pixel (24-bit also supported)
- Up to 8 Ch. embedded HDMI audio output
- Up to 2 Ch. analog audio output
- Full 10-bit pixel processing pipeline
- Network (LAN) control and status
- Media Port capable of controlling the unit
- Built in web server for full remote control and configuration
- Quick network setup with AJA eMini-Setup software (via USB):

<https://www.aja.com/family/software#eminisetup>

- For additional information, please refer to the IPR-10G-HDMI section of the AJA website:

<https://www.aja.com/products/mini-converters/ip-converters>

Installing and working with AJA eMini-Setup

Step 1:

- Acquire eMini-Setup from the AJA website:
 - <https://www.aja.com/family/software#eminisetup>

Step 2:

- Install eMini-Setup:
 - Unzip the Installer
 - Run the .dmg file on macOS or the .msi file on Windows

Step 3:

- Connect Power to your AJA Ethernet equipped Converter

Step 4:

- Connect the USB Config cable to the Computer running eMini-Setup

Step 5:

- Open eMini-Setup and Configure the device's network settings

Note: DHCP will be enabled by default, and if the device is connected to a DHCP server the IP address field will populate

Step 6:

- Type in (or Copy/Paste) the IP address into a Browser Window
 - This will get you into the web based GUI for your AJA device

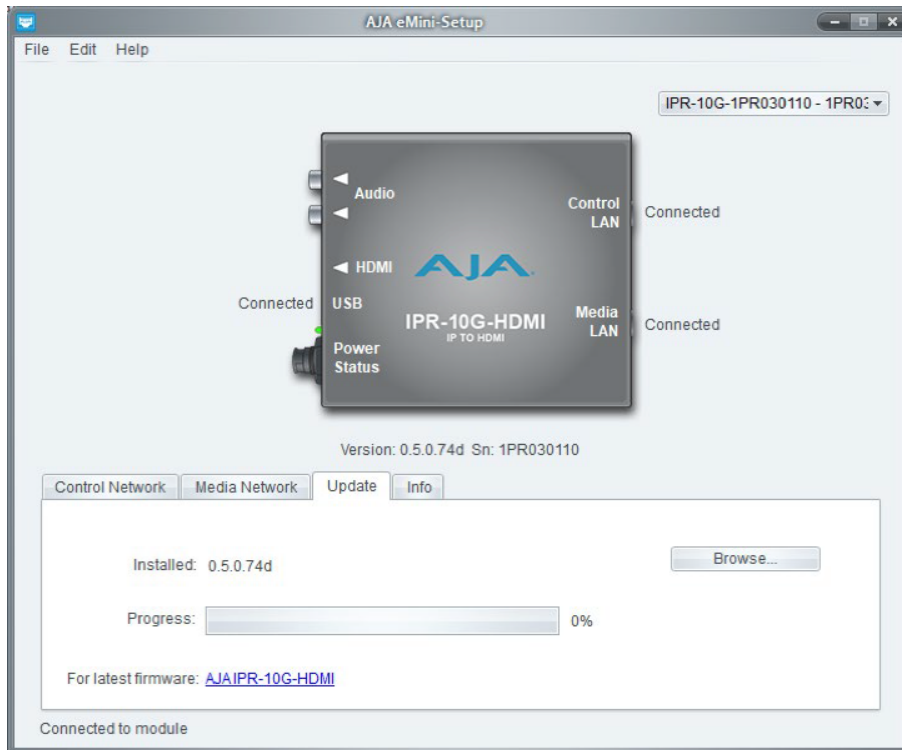
Step 7:

- Use the Web GUI to fully configure, control and use your AJA Device

Updating IPR-10G-HDMI Firmware

Note: Please see the IPR-10G-HDMI Manual for more detail.

1. Check the AJA website for new firmware: <https://www.aja.com/products/mini-converters/ip-converters#support>
2. If new software is found, download it and uncompress the file archive (.zip).
3. Connect the device to a Mac or PC via a USB port on the computer.
4. Click the Update tab. Click the Browse button. Navigate to the firmware (.ajas extension), open it, and confirm the update. Progress will be shown via the "Progress" bar.



5. After the update, the AJA device must be rebooted by clicking on the Reboot button in the prompt window.

Technical Support

AJA Technical Support is free and available to help you answer questions or resolve issues with any of your AJA products.

To contact AJA Technical Support:

Email: support@aja.com

Phone: +1-530-271-3190 Fax: +1-530-274-9442

Web: www.aja.com/support

Shipping: 180 Litton Dr. Grass Valley, CA 95945 USA