



# Product Catalog

## July 2025

# Table of Contents

## Ki Pro

- 3 **Digital Recorders and Players**  
File based recording and playback devices that create high quality files on computer friendly media via industry standard codecs and connections for on-set, postproduction, OTT, live events, and more.

## BRIDGE NDI 3G

- 6 **Conversion Gateway**  
BRIDGE NDI 3G is a 1RU gateway offering high density conversion to and from 3G-SDI to NDI and NDI to 3G-SDI for both HD and UltraHD.

## BRIDGE LIVE Family

- 7 **Streaming and IP Video Workflow Tools**  
BRIDGE LIVE and BRIDGE LIVE 3G-8 are turnkey solutions built for critical streaming applications with high performance 12G-SDI or multi-channel 3G-SDI video encoding/decoding and stream-based transcoding.

## HELO Plus

- 8 **Streaming and Recording Appliance**  
SDI and HDMI I/O in a single appliance with the ability to simultaneously stream, encode, and record beautiful H.264 files.

## Dante AV 4K

- 9 **IP Video Transmitters and Receivers**  
Transmitter/receiver converters enable transport and control of ultra-low latency, professional quality 4K/UltraHD/2K/HD/VESA IP video and audio to/from 12G-SDI or HDMI 2.0 devices over a 1 Gige Dante AV network.

## Io

- 10 **Mobile I/O**  
Desktop level functionality in portable form factors featuring Thunderbolt™ connectivity and 12G-SDI and HDMI 2.0.

## KONA

- 12 **Desktop I/O**  
Powerful PCIe I/O solutions for the most demanding tasks from SD to 8K, multi-channel workflows, HDR, and streaming, augmented reality, and virtual production.

## U-TAP

- 18 **USB 3.0 Powered 3G-SDI and HDMI Capture**  
Professional connectivity and high quality video capture to your laptop or workstation.

## T-TAP Pro

- 19 **Thunderbolt™ 3 and Thunderbolt 4 Powered SDI and HDMI Output**  
Compact device that utilizes the power of Thunderbolt to deliver high quality 10 or 12-bit, HDR, SDR, 4K, UltraHD, 2K, HD, SD video, and embedded audio output from any compatible Mac, Windows, or Linux computer.

## ColorBox

- 20 **In-line HDR/SDR Algorithmic and LUT Color Transforms**  
Compact, high performance converter for color managed workflows designed to specifically meet the conversion needs of broadcast, live events, and on-set applications.

## HDR Image Analyzer

- 21 **HDR Waveform, Histogram, and Vectorscope Monitoring**  
Tools for the effective real time multi-channel analysis of the latest HDR/WCG standards and color spaces from 8K/UltraHD2/4K/UltraHD/2K/HD content via SDI and NDI in a stand-alone 1RU device.

## FS

- 22 **4K/2K/HD/SD and HDR/SDR Frame Sync and Conversion**  
Hardware conversion in compact 1RU rack Frame Sync units offering unrivaled flexibility and supporting the latest connectivity, with models supporting 12G-SDI, HDMI, and fiber I/O with extensive audio support.

## KUMO

- 25 **Routers**  
Convenient dense routing solutions in compact form factors for use in facilities, OB trucks, post suites, and more. Available in multiple connector densities, with 3G-SDI and 12G-SDI models.

## Mini-Converters

- 26 **DANTE-12GAM**  
Dante®, AES67 and SMPTE ST 2110-30 SDI Audio Embedder/Disembedder
- 27 **Infrastructure Converters**  
Options for common infrastructure and point of use needs.
- 29 **HDMI Mini-Converters**  
Converters offering support for raster sizes all the way from SD and HD to 4K/UltraHD, as well as connections for the latest 12G-SDI and HDMI 2.0 standards.
- 30 **Scan Converters**  
Exceptional high quality conversion of computer and video source signals with Region of Interest support to desired HD raster sizes and frame rates.

## 30 Scaling Mini-Converters

- Conversion for an entire source image from 4K to HD, up, down, or cross-conversion between SD and HD formats, or even HD to DVI conversion for driving DVI monitors from video sources.

## 30 IP Mini-Converters

- Rugged, compact, and reliable, providing the bridge between baseband and IP video for a range of applications.

## 30 Analog Mini-Converters

- Solutions for analog to digital and digital to analog conversion for both video and audio, including composite, component, and HD analog to HD digital conversion.

## 31 Optical Fiber Mini-Converters

- SDI/optical fiber converters for the transport of 12G/3G/HD/SD-SDI or HDMI over distances up to 10km when using standard single mode or multi-mode fiber optic cable. FiDO models support video formats all the way up to 8K/UltraHD2, model dependent.

## Mini-Converter Accessories

### 34 Accessories

- Options for mounting and powering AJA Mini-Converters.

## openGear

- 35 **openGear Compatible Rackframe Cards**  
Cards for infrastructure, HDMI/SDI conversion, scan conversion, fiber conversion, and scaling for use in the AJA OG-X-FR openGear frame, amongst others.

## SFP Options

- 39 **SFP Options**  
Optional SFP modules are available for a range of AJA Products.

## Corvid

### 40 PCIe I/O

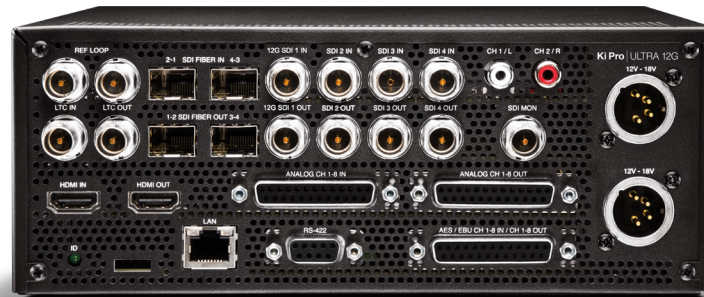
- Proven video I/O devices available to AJA partners for development and support of integrated products with powerful SDK support.

# Ki Pro® A Versatile Digital VTR For Any Workflow

**3** YEAR WARRANTY

## Ki Pro® ULTRA 12G \$4,935

- 12G-SDI 4K/UltraHD/2K/HD recorder/player and multi-channel ProRes HD recorder
- Genlock free multi-channel recording
- Single channel recording up to 4K 60p
- Support for 8K VPID multi-unit playback
- Records and plays back up to ProRes 4444 XQ
- Records and plays back up to Avid DNxHR HQX
- HDR recording and playback
- 1x 12G-SDI and 3x 3G-SDI I/O
- HDMI 2.0 I/O
- SFP fiber cage I/O
- Analog audio I/O (DB-25 loom connectivity)
- Support for RP 188 timecode inputs on SDI
- Balanced XLR analog audio inputs, mic/line/48v switchable
- Front panel button controls with integrated HD resolution screen
- RS-422 control
- REST interface
- Optional rack mount shelf (KPU-SHELF)
- Easy to use web UI, configure and control from standard web browsers
- Stand-alone operation
- Three year warranty



AJA Pak Media

Available in 2TB, 1TB, 512GB and 256GB capacities

www.aja.com

Size (W x D x H): 219.46 x 268.60 x 84.08 mm

## Ki Pro® GO2 \$4,935

- Multi-channel H.265 (HEVC) or H.264 (AVC) recorder/player
- 5x USB recording media ports, compatible with off-the-shelf USB 3.2 Gen 1 media
- Recording to network (SMB) storage
- Redundant recording to user selectable destinations – USB or SMB
- Enhanced Super Out
- Front panel audio monitoring
- 4x 3G-SDI and 4x HDMI selectable inputs
- 4x 3G-SDI loop through
- REST API Support
- LTC on analog audio input
- Onboard drive formatting
- Genlock free inputs
- HDMI and SDI multi-channel matrix monitoring
- Support for RP 188 timecode inputs on SDI
- Balanced XLR analog audio inputs, mic/line/48v switchable
- Front panel button controls with integrated HD resolution screen
- Easy to use web UI, configure and control from standard web browsers
- Stand-alone operation
- Three year warranty



Size (W x D x H): 219.46 x 268.60 x 84.08 mm

# Ki Pro<sup>®</sup> | Rack \$3,315



Aja KiStor Media  
Available in 1TB and 512GB SSD capacities

Size (W x D x H): 219.46 x 268.60 x 44.45 mm

## Ki Pro Rack

- HD/SD recorder and player
- Record to Apple ProRes or Avid DNxHD
- SDI, HDMI, and Component Video I/O
- AES (BNC) and analog (XLR) audio I/O
- 2x KiStor media bays with Ki Protect
- Up, down, cross-conversion built-in
- Easy to use web UI, configure and control from standard web browsers
- REF, LTC, and RS-422 support
- Three year warranty





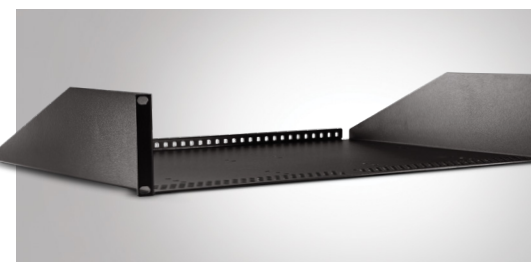
### PAK Media

PAK Media is a high capacity solid state drive encased in a protective housing with a rugged connection engineered to handle the rigors of repeated use in the field. Available in 2TB, 1TB, 512GB and 256GB capacities. Designed for use with Ki Pro Ultra 12G.



### PAK Dock Pro

External Dock for PAK Media with USB-C connection for fast transfer of media to a host computer. PAK Dock Pro is bus-powered, meaning that a single USB-C cable enables file transfer and also powers the unit.



### Ki Pro Shelf

Ki Pro Ultra Plus, Ki Pro Ultra 12G, Ki Pro Ultra, Ki Pro GO, and Ki Pro GO2 feature a small footprint for desktop use or can be mounted side by side using the additional KPU-Shelf for rackmount applications.



### KiStor Media

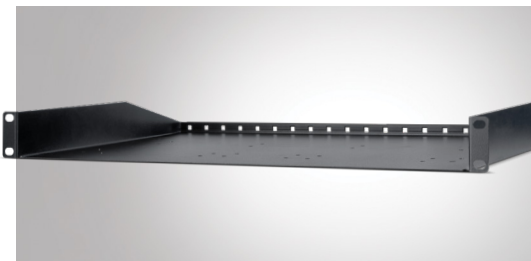
KiStor Media is a high capacity solid state drive encased in a protective housing with a rugged connection engineered to handle the rigors of repeated use in the field. Available in 1TB and 512GB capacities. Designed for use with Ki Pro Rack.



### Reliable Storage Media

Ki Pro Ultra 12G and Ki Pro Rack include Ki Protect, a feature that helps to ensure data integrity if a media drive is accidentally removed or loses power during recording.

The only loss that should be incurred is the last few frames that were in transit to the media drive to be recorded when the operation was interrupted, providing greater peace of mind on set and in the studio.



### 1RU Shelf for ColorBox and HELO Products

ColorBox and HELO Plus feature a small footprint for desktop use or can be mounted side by side using the additional 1RU Utility Rack for rackmount applications.

# BRIDGE | NDI® 3G

**3** YEAR  
WARRANTY

## High Density HD and 4K/UltraHD Conversion Gateway for SDI to NDI and NDI to SDI **\$14,875**

BRIDGE NDI 3G is a 1RU gateway offering high density conversion to and from 3G-SDI to NDI and NDI to 3G-SDI for both HD and 4K/UltraHD. Designed to drop into any existing NDI or SDI workflow as a plug and play appliance, easy to deploy and administer.

BRIDGE NDI 3G brings immense conversion power and flexibility, fully controllable remotely for AV use, security and surveillance, broadcast, eSports, entertainment venues, and a wide range of other facilities needing high quality, efficient NDI encode and decode. Set and forget, or use more dynamically as project needs dictate.

### BRIDGE NDI 3G

- 3G-SDI I/O supports 16-ch of HD or 4-ch of 4K/UltraHD up to 60p as standard\*
- Bidirectional encode/decode SDI to NDI, NDI to SDI, with a combination of HD or 4K/UltraHD video
- Confidence monitoring
- Supports NDI 6, NDI 5, and NDI 4
- Discovery Server Compatible
- Buffer controls for low latency tuning
- Selectable NDI encode profiles for 8-bit and 16-bit, 4:2:2
- Video and Key support
- Progressive and Interlaced video support
- Timecode support across VITC1, VITC2, LTC and Time-of-Day
- Remote WebUI or local GUI for easy administration, control, and operation



16x 3G-SDI Bidirectional I/O for up to 16-Channels of HD or 4-Channels of 4K/UltraHD with Dual 10 GigE Ethernet

Size (W x D x H): 436.88 x 429.26 x 43.18 mm

### Hardware

BRIDGE NDI 3G is housed in a compact 1RU chassis and yet offers high density I/O with 16 bidirectional 3G-SDI connectors as compact DIN 1.0/2.3 spigots for all baseband video inputs and outputs.

Included with BRIDGE NDI 3G are 18x DIN 1.0/2.3 to BNC connectors to make installation into an existing SDI infrastructure easy. BRIDGE NDI 3G boasts dual 10 GigE for control and all NDI I/O, providing support for up to 16-ch of incoming or outgoing NDI streams.

Dual power supplies offer full redundancy.

### Video and Audio Support

SDI I/O BRIDGE NDI 3G supports YCbCr, 4:2:2 10-bit video with up to 16 embedded channels of audio, up to HD and 4K/UltraHD 60p. 4K/UltraHD SDI I/O supports either Square Division or 2SI.

NDI I/O BRIDGE NDI 3G supports UYVY, 4:2:2, 8-bit, with P216, 4:2:2, 16-bit (support for output only), with up to 16 embedded channels of audio, up to HD and 4K/UltraHD 60p.

System wide audio default can be set for 2,8, or 16-ch of audio across SDI and NDI I/O along with audio reference level adjustments to meet SMPTE and EBU requirements.

\*Ultimate performance based on network conditions, concurrent video processing, and other parameters.

### Remote or Local Control

BRIDGE NDI 3G can be controlled locally using a mouse and keyboard with the appropriate VGA-capable monitor.

All functionality of BRIDGE NDI 3G is also accessible remotely, allowing easy control via the same intuitive UI.

### REST API

Likewise, BRIDGE NDI 3G can be remotely controlled via REST API. The REST API UI can be launched via web browser, and is self documenting.

### Operational Flexibility

Use either NDI 4, 5, or 6.

Compatible with external NDI discovery server.

Buffer settings for tuning latency to your network.

HD I/O: All HD channels can be used to encode from SDI to NDI, or decode from NDI to SDI.

HD Video and Key I/O: HD channels can be allocated into V+K groups.

4K/UltraHD I/O: HD channels can also be placed into 4K/UltraHD groups.

Simultaneous Encoding and Decoding.

# BRIDGE | LIVE Family

## Multi-Channel Live Video for REMI, Contribution, Collaboration, Streaming, and Delivery

BRIDGE LIVE is a broadcast quality, low latency turnkey system for remote production, synchronous multi-channel video contribution, remote collaboration, direct to audience streaming, and multi-bit rate/multi-format delivery.

Equipped with either multi-channel 12G-SDI or 3G-SDI I/O, plus the power and flexibility to enable real time bidirectional encoding, decoding, and transcoding, BRIDGE LIVE is an essential part of any modern live video production toolkit. A compact and robust 1RU form factor with redundant power supplies and a three year warranty means peace of mind whether facilitating remote production, two-way interviews, live event streaming, synchronous multi-cam backhaul with HDR, cloud contribution, program return, confidence monitoring, collaborative production, ABR ladder profiles to handoff for OTT packaging, or pure IP transcoding, BRIDGE LIVE ensures simultaneous, secure, and stable workflows, whether over private lines or the public internet.

**BRIDGE | LIVE \$16,635** 4x 12G-SDI I/O supports Multi-Channel HD or UltraHD

**BRIDGE | LIVE 3G-8 \$18,999** 8x 3G-SDI I/O supports Multi-Channel HD



Size (W x D x H): 17.2" x 16.9" x 1.7" (436.88 x 429.26 x 43.18 mm)

**SRT ALLIANCE**  
SECURE RELIABLE TRANSPORT

**DOLBY**  
**NDI**

### REMI and Remote Contribution

BRIDGE LIVE can take independent SDI source inputs and maintain their synchronous relationship while transporting the content to end-point destinations.

This functionality can take place between multiple BRIDGE LIVE units for a synchronous end-to-end SDI workflow, often referred to as SDI backhaul or site-to-site SDI workflows.

BRIDGE LIVE's synchronous multi-channel capability is also supported for cloud contribution, where a BRIDGE LIVE system can send to and receive from a cloud instance of Comprimato Live Transcoder software for delivery to and from various platforms.

### Collaboration

BRIDGE LIVE can be used to provide multiple collaborative workflows.

For post, BRIDGE LIVE enables connecting remote artists and clients using reference quality video.

For production, BRIDGE LIVE offers the flexibility to tap video from on-set recording devices and stream the output of cameras (over a secure private line with encryption), providing a high quality window into production for those who cannot be on-set.

For broadcast/AV/live events, BRIDGE LIVE can be used to connect two geographically separated NDI or SDI production teams via public internet.

The bidirectional capability enables confidence monitoring from a return feed to ensure signal health.

### Streaming

BRIDGE LIVE offers a comprehensive platform for direct-to-audience live video. Streaming support includes SRT, RTMP/S, RTP/UDP, HLS, and MPEG-TS. Using these standard protocols provides wide support for streaming via CDN services such as AWS, Wowza, Twitch, Akamai, YouTube Live, Facebook Live, and many more. BRIDGE LIVE offers flexibility for multiple inputs, supporting multiple bidirectional streams at the same time, broad format and bit rate support, and pure IP workflows.

### Delivery

BRIDGE LIVE facilitates primary distribution of finished and mastered content to partners for subsequent streaming to audiences and/or for ingest, storage, and archival.

BRIDGE LIVE can provide primary streams, plus HLS or other ABR ladder profiles for handoff for OTT packaging. For example, encoding to H.264 or H.265 for handoff with ABR ladder profiles, including pointing the ladder profile directly to a local packager or CDN.

BRIDGE LIVE can also deliver content to third party cloud or on-prem ecosystems such as those offered by Net Insight, MediaLinks TV, and Evertz.

3 Year Hardware Warranty\*  
\*Hardware Warranty can be extended to 5 years with annual maintenance License purchase

**3 YEAR WARRANTY**

### BRIDGE LIVE Family Features

- 12-bit, 10-bit and 8-bit, 4:2:2 and 4:2:0 profiles, depending on the codec
- Multi-bit rate/format distribution, ABR Ladder Profiles for OTT handoff
- HDR/SDR supported in end-to-end BRIDGE LIVE SDI workflows
- Bidirectional Encode/Decode/Transcode: NDI, H.265 (HEVC), H.264 (AVC), H.262 (MPEG-2), JPEG 2000 (TR-01), and JPEG XS (TR-07)
- Synchronous Multi-Channel / Multi-System Transport for SDI backhaul or Cloud Delivery
- Protocols: SRT, UDP, HLS, RTP, RTMP, RTMPS output, MPTS input
- Transports: MPEG-TS, NDI, AVC-TS, Fragmented MP4
- Audio: AAC, AAC HE v1 & v2, AC3, E-AC3 (input), Dolby E pass-through, MPEG-2 Audio, NDI (uncompressed float), PCM (multi-channel), SMPTE ST 302M-2007
- Unmatched Metadata: MPEG-2 ANC (SMPTE ST 2038), Ad insertion markers (SCTE-35/ SCTE-104), CC/Subtitles (EIA-608/708, Line 21, H.264 SEI), SEI timecode insertion

\*Additional license required

# HELO Plus Advanced H.264 Streaming and Recording \$1,945

3 YEAR WARRANTY

HELO Plus is a compact, advanced H.264 streaming and recording stand-alone appliance. HELO Plus offers both SDI and HDMI I/O with the capability to stream up to 1080p60 to a Content Delivery Network and record simultaneously. Two separate streaming destinations can be set up, and recordings can be made to a combination of SD card, USB storage, and NFS or SMB network storage. HELO Plus also provides Picture-In-Picture and graphics functionality in hardware for compelling presentations made simple.



Size (W x D x H): 215.9 x 139.7 x 25.91 mm



## Hardware

HELO Plus has stream and record buttons on the front of the unit with LED indicators for audio levels. HELO Plus is fanless and silent. SD card and USB ports are also situated on the front of the unit for easy access.



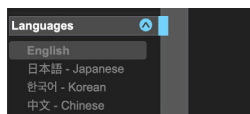
## Dual Streaming Outputs Plus Record

HELO Plus has dual encoders for streaming outputs, giving the flexibility to create different output settings from a single input source. Either of these encoder outputs can serve as the source for the HELO Plus recording system as well.



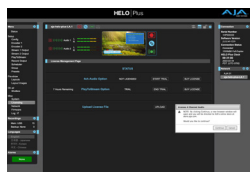
## Layouts for Picture-in-Picture

HELO Plus allows multiple inputs to be combined into a single screen with a graphic element overlay. The layout UI enables the user to combine the SDI input and the HDMI input into a single output stream and then add a graphic (video + key) into a composite.



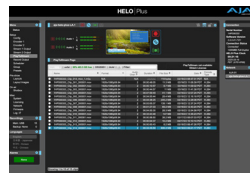
## Multi-Language UI

The language used in the HELO Plus WebUI can be selected between English, Japanese, Korean and Chinese.



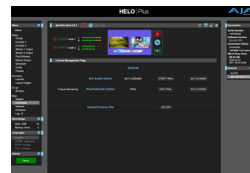
## 4-Ch Audio Option

With an optional license, HELO Plus can expand the number of audio channels available for streaming and recording from two channels (a single stereo pair) to four channels (two stereo pairs). This enables multiple dual language workflows, as different languages can now be carried on each stereo pair. This option gives the user the ability to extract a stereo audio service from any of the four stereo pairs that may be embedded into an SDI signal and use them in either of HELO Plus's audio sources for both streaming and recording.



## PlayToStream Option

PlayToStream allows the user to stream – via either or both of the Stream Outputs – a previous program that was recorded on either a HELO Plus or HELO system, stored either on local SD or USB storage or on external SMB or NAS systems.



## Trial Licenses for All Options

HELO Plus offers users the ability to “try out” any available option for up to 15 hours within 15 days of starting a trial.



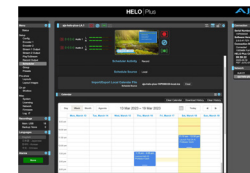
## Group Mode

HELO Plus can participate in a Ki Pro Group, enabling multiple REMI workflows. When in Group mode, starting a recording on a Ki Pro Group will simultaneously start streaming, recording or both on the HELO Plus.



## Web Server Built-In

HELO Plus can be easily configured remotely on a standard web browser, via the Ethernet connection, and using a desktop or laptop computer. Every function of HELO Plus is accessible in the WebUI, with multiple HELO Plus devices being easily controllable via a tabbed browser window.



## Scheduler and Automation Control

HELO Plus offers a scheduler that triggers pre-planned start and stop recording and streaming media simplifying projects requiring definitive schedules.



# Dante AV | 4K-T and 4K-R

5 YEAR WARRANTY

Add Cinema Quality IP Video to your Dante Network **\$1,815 each**

The AJA Dante AV 4K-T and Dante AV 4K-R encode and decode video and audio streams to and from the Dante AV Ultra video codec, simplifying IP AV signal delivery. Building on years of robust IP audio networks, AJA Dante AV encoders and decoders enable an easy path to upgrade your existing Dante audio network to deliver high quality visually lossless video up to 4K/UltraHD for delivery across 1 GbE networks. The Dante AV 4K-R now features HDR and reference support for integration with professional broadcast workflows.

## Dante AV 4K-T



Size (W x D x H): 222.0 x 180.09 x 41.91 mm

## Dante AV 4K-T

- Dante AV Ultra Transmitter
- 4K/UltraHD/2K/HD/VESA
- HDR Support
- 12G-SDI and HDMI 2.0 In
- 1 GbE PoE+ IP
- Compatible with Audinate Dante Controller and Dante Domain Manager software for routing Video, Audio, KVM, VISCA, and IR

## Dante AV 4K-R



Size (W x D x H): 222.0 x 180.09 x 41.91 mm

## Dante AV 4K-R

- Dante AV Ultra Receiver
- 4K/UltraHD/HD/VESA
- HDR Support
- 12G-SDI and HDMI 2.0 Out
- 1 GbE PoE+ IP
- Reference Input for external Gen Lock support
- Compatible with Audinate Dante Controller and Dante Domain Manager software for routing Video, Audio, KVM, VISCA, and IR

## Dante AV

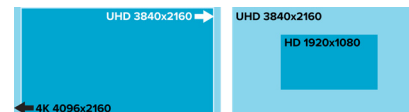
Dante AV 4K-T transmitters and Dante AV 4K-R receivers convert 12G-SDI and HDMI 2.0 to and from the Dante AV Ultra ecosystem, with bandwidth friendly 1 GbE compatibility, supporting up to 4K 60p HDR for ultra-low latency, synchronized IP video and audio for live events, education, HOW, broadcast workflows and more.

## AJA and Dante AV Ecosystem

Dante AV is an area of fast growth built on the tested Dante IP audio network, with many partners offering a range of Dante AV products from, PTZ cameras to cinema quality solutions. With additional products from AJA, such as the OG-DANTE-12GAM Dante audio embedder/disembedder, HELO Plus streaming device, Ki Pro recorders, FS frame syncs, ColorBox, and more, users have the ability to create a robust IP video and audio solution combined with inline SDI solutions for a wide range of workflows.

## Crop/Scale Function

The Dante AV 4K-R now includes helpful crop and resizing functionality. Full 4K (4096x2160) can be cropped to UltraHD, 2K cropped to HD, and UltraHD downscaled to HD.



## Rackmounting

For rackmounting, the AJA IOX-RM rackmount shelf accessory is available for \$120 US MSRP and can hold two Dante AV units on one shelf.



# io<sup>®</sup> Powerful and Flexible Professional I/O

**3** YEAR WARRANTY

io<sup>®</sup> | X3 \$1,835



Size (W x D x H): 222.0 x 180.09 x 41.91 mm

## io X3



- SD/HD/2K I/O up to 50/60p
- 4x bidirectional 3G-SDI BNC with 16-channel embedded audio
- HDMI I/O with 8-channel embedded audio
- Two Thunderbolt 3 ports with loop through
- Multi-channel workflow support for OBS/Wirecast/vMix and other applications
- RGB 4:4:4 12-bit up to p30, YCbCr 4:2:2 10-bit and HFR workflows supported
- VPID signaling for SDR/HDR Transfer Characteristics, Colorimetry, and Luminance via SDI
- PQ, HLG, HDR10, and Dolby Vision Support
- HDR Metadata Capture and Auto Playback Detection
- Multiview output over HDMI to view up to 4-ch on one screen
- Analog audio flexibility with a choice of 8-channel In or 8-ch Out or 4-ch In and 4-ch Out via a standard Tascam connection
- Front panel audio display
- Includes support for the Apple Silicon chips
- XLR 12V power for battery or AC use
- Headphone jack and level control for mobile and live environments
- RS-422 VTR control, Reference, LTC Input, and LTC Output



io<sup>®</sup> | 4K Plus \$3,435



Size (W x D x H): 222.0 x 206.0 x 41.9 mm

## io 4K Plus



- 4K/UltraHD/2K/HD/SD 10-bit I/O up to 50/60p
- 4K/UltraHD HDMI 2.0 I/O with 8-channel embedded audio
- 4x SDI BNC ports and configuration options
- Four HD/SD 3G/1.5G bidirectional
  - One 4K/UltraHD single link 12G/6G input (SDI 1) and one 4K/UltraHD single link 12G/6G output (SDI 3)
  - Two 4K/UltraHD dual link 3G/1.5G (one input channel & one output channel, two input channels, or two output channels)
  - One 4K/UltraHD four link 3G/1.5G input or output, Quadrant or 2SI
- Dedicated SDI HD/SD Monitor Output
  - 4K video is down-converted to 2K, and UltraHD is down-converted to HD
- Two Thunderbolt 3 ports with loop through
- RGB 4:4:4 12-bit, YCbCr 4:2:2 10-bit and HFR workflows supported
- 12-bit and 10-bit LUT support (.cube)
- 4K Closed Captioning support
- VPID signaling for SDR/HDR Transfer Characteristics, Colorimetry, and Luminance via SDI
- PQ, HLG, HDR10, and Dolby Vision support
- HDR Metadata Capture and Auto Playback Detection
- Analog Audio flexibility with a choice of 8-channel In or 8-channel Out or 4-channel In and 4-channel out
- Includes support for the Apple Silicon chips
- Compatible with OBS Studio, vMix, Telestream Wirecast, Adobe Creative Suite, Apple Final Cut Pro, Avid Media Composer, and much more
- XLR 12V power for battery or AC use
- Headphone jack and level control for mobile and live environments
- RS-422 VTR control, Reference, LTC Input



# Io<sup>®</sup> Powerful and Flexible Professional I/O

3<sup>YEAR</sup>  
WARRANTY

## Io<sup>®</sup> | Software Compatibility

Io products are cross-platform and compatible with a wide range of professional macOS<sup>®</sup>, Windows<sup>®</sup>, and Linux software applications.

AJA drivers and plug-ins create a seamless integration between the native software and AJA's high quality hardware that lets you focus on the work, not the technology.

View our software compatibility chart for the following categories:

Audio | Color | Dailies | Editorial | Effects | Graphics | Ingest/Playout | Restoration  
Streaming/Live Production | Test/Measure

[View Compatibility Chart](#)



# KONA® Next Generation Uncompressed IP Video

3 YEAR WARRANTY

## KONA® | IP25 \$6,995

KONA IP25 delivers the power, quality, reliability, and ease of use to support your transition to SMPTE ST 2110 workflows. The KONA IP25 is an 8-lane, PCIe Gen 4.0, SMPTE ST 2110 IP I/O card supporting bidirectional uncompressed video. KONA IP25 has two SFP cages that support 10 and 25 Gigabit (10/25 GigE) SFPs, and also includes a 1 GigE RJ-45 connector.

The KONA IP25 is your complete solution for SMPTE ST 2110 processing with on board PTP and NMOS control. To your computer, the KONA IP25 appears as any other KONA card and carries the control load so it's not placed on the host PC. ST 2110 Configuration and Control is supported by both In-Band (media network via SFPs) and Out-of-Band (control network via RJ-45).

On the desktop, KONA IP25 transparently supports Apple® Final Cut Pro, Adobe® Premiere® Pro, Avid® Media Composer®, AJA Control Room and other leading editorial, effects, and production tools.

 SMPTE | ST 2110



### KONA IP25

- ST 2110-20 Video: Supports up to 4 Rx and 4 Tx simultaneously
- 10-bit 4:2:2 up to 3840x2160p
- 12-bit 4:4:4 up to 2048x1080p (Future Firmware)
- SDR/HDR support for Transfer Characteristics, Colorimetry, and Luminance via SDP file
- ST 2110-30 Audio: Supports up to 4 Rx and 4 Tx simultaneously
- Up to 16 audio channels via 1ms and 125us timing per ST 2110-30 stream
- ST 2110-40 Ancillary: Supports up to 4 Rx and 4 Tx simultaneously
- ST 2022-7 redundancy
- ST 2059-2 (PTPv2) accessed only via media network SFPs
- LLDP (Link Layer Description Protocol)
- DNS SD (service discovery)
- In-Band / media network (via SFPs): PTPv2/ST2059-2, control via NMOS
- Out-of-band / management network (via 1 GigE RJ-45): control via NMOS
- Single slot PCIe 4.0, 8 lane, Full height
- 2x SFP cages supports 10 GigE or 25 GigE SFPs (SFPs not included)
- macOS, Windows, and Linux support
- Three year warranty





## KONA® | X \$3,845

Designed from the ground up to support next-generation AI and AR workflows, KONA X is a 4-lane, PCIe video I/O card with dual, full-size, bidirectional 12G-SDI BNC connections and two full-size HDMI 2.0 connections, one for input and one for output. KONA X lets users achieve up to sub-frame latencies with Streaming DMA (Direct Memory Access), which enables powerful real-time workflows with no perceptible delay on I/O and processing, crucial for implementations such as live sports graphics and virtual production.

Supporting 4K/UltraHD, 2K/HD, SD, 10-bit 4:2:2 and 12-bit 4:4:4 color depth for exceptional image quality, KONA X promises the flexibility to ingest and output with 12G-SDI and full-size HDMI 2.0 ports. The bidirectional 12G-SDI ports allow for capture and simultaneous pass-through, and with the appropriate software, multi-channel capture and streaming.

KONA X supports leading content creation applications, such as Adobe® Premiere® Pro, Apple® Final Cut Pro, Avid Media Composer®, FilmLight, OBS Studio, vMix and much more. KONA X is also compatible with AJA's multi-platform SDK for Developers.

For HDR\* workflows, KONA X supports HLG, PQ, and Dolby Vision for rich color delivery over SDI and/or HDMI. KONA X has the horsepower for your work today and into the future.

*\*Application dependent*

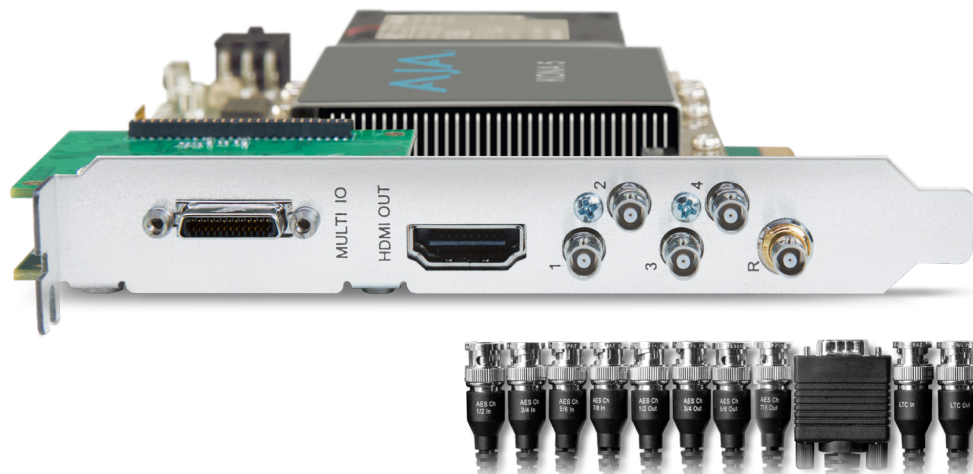
## KONA X

- 4K/UltraHD/2K/HD/SD up to 50/60p
- 2x bidirectional 12G-SDI connections with up to 16-ch embedded audio
- HDMI 2.0 input and output with up to 8-ch of embedded audio
- RGB 4:4:4 12-bit (4K/UltraHD) workflows supported
- YCbCr 4:2:2 10-bit and HFR workflows supported
- VESA HDMI I/O compatibility - the video subsystem timing is agnostic, enabling capture and playback of a myriad of HDMI formats
- Support for Apple Final Cut Pro, Adobe Premiere Pro, and Avid Media Composer and much more
- Support for OEM applications with the AJA SDK
- In Firmware Microcontroller
- 4K Closed Caption Support
- VPID signaling for SDR/HDR Transfer Characteristics, Colorimetry, and Luminance via SDI
- PQ, HLG, HDR10, and Dolby Vision Support
- HDR Metadata Capture and Auto Playback Detection
- Includes support for the latest Apple silicon
- Optional KONA Xpand board provides easy access to bi-level / tri-level Video Reference (BNC), LTC in/out, 8-ch AES/EBU audio (all with included breakout cable), and 2-ch analog audio in and out via user supplied cable
- Three year warranty



Optional KONA Xpand and breakout cables

# KONA® 5 \$4,235



Supplied Breakout Cables

## KONA 5

- 8K/UltraHD2/4K/UltraHD/2K/HD/SD up to 50/60p
- 4x bidirectional 12G-SDI connections with 16-channel embedded audio
- HDMI 2.0 output, 4K/UltraHD HFR, plus 8K to 4K downsampling
- RGB 4:4:4 12-bit (4K/UltraHD) workflows supported
- YCbCr 4:2:2 10-bit and HFR workflows supported
- Up to 12-bit LUT support (.cube)
- 8K support for Apple Final Cut Pro, Adobe Premiere Pro and Avid Media Composer, 8K or multi-channel 4K support for OEM applications with AJA SDK
- Multi-channel support with OBS Studio, vMix and Telestream Wirecast
- 4K Closed Captioning Support
- VPID signaling for SDR/HDR Transfer Characteristics, Colorimetry and Luminance via SDI
- PQ, HLG, HDR10, and Dolby Vision Support
- Supports Apple silicon
- HDR Metadata Capture and Auto Playback Detection
- Reference Input on card (Analog black burst or Tri-level)
- Included breakout cable for LTC, RS-422, 8-ch AES/EBU
- Three year warranty

HDR



# KONA® 4 \$2,595



K3G-BOX

\$745

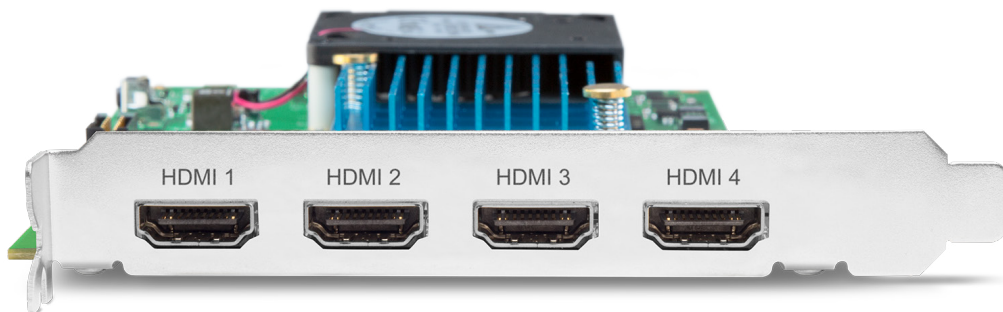
## KONA 4

- 4K/UltraHD/2K/HD/SD up to 50/60p
- 4x bidirectional 3G-SDI connections with 16-channel embedded audio
- HDMI 1.4b monitoring with 8-channel embedded audio
- RGB 4:4:4 12-bit, and YCbCr 4:2:2 10-bit HFR workflows supported
- 10-bit LUT support (.cube)
- Real time up, down, cross-conversion (HD/SD)
- 4K Closed Captioning support
- VPID signaling for SDR/HDR Transfer Characteristics, Colorimetry and Luminance via SDI
- PQ, HLG, HDR10, and Dolby Vision Support
- HDR Metadata Capture and Auto Playback Detection
- Supports Apple silicon
- Compatible with OBS Studio, vMix, Telestream Wirecast, Adobe Creative Suite, Apple FCP, Avid Media Composer, and much more.
- Included breakout cable for Ref (Analog or Tri-level), LTC, RS-422, 8-ch AES/EBU
- Extend external connectivity with K3G-BOX breakout box
- Three year warranty

HDR



## KONA® | HDMI \$1,715



### KONA HDMI

- 4K/UltraHD/2K/HD/SD up to 50/60p
- 4x full-size HDMI inputs each with 8-channel embedded audio
- Simultaneous capture of 2x 4K/UltraHD or 4x 2K/HD
- HDMI 2.0 (ports 1&2) and HDMI 1.4b (ports 3&4)
- RGB 4:4:4 12-bit, and YCbCr 4:2:2 10-bit HFR workflows supported
- Capture stunning HDR from cameras, game consoles, and more
- PQ, HLG, HDR10, and Dolby Vision Support
- HDR Metadata Capture
- Video4Linux (V4L2 Color) and DirectShow support
- Compatible with apps from Adobe, Avid, OBS Project, and Telestream
- Supports Apple silicon
- Three year warranty

HDR



## KONA® | 1 \$825



### KONA 1

- 2K/HD/SD up to 50/60p
- 2x 3G-SDI connections (In, Out) with 16-channel embedded audio
- RGB 4:4:4 12-bit and YCbCr 4:2:2 10-bit HFR workflows supported
- 10-bit LUT support (.cube)
- VPID signaling for SDR/HDR Transfer Characteristics, Colorimetry and Luminance via SDI
- PQ, HLG and Dolby Vision Support
- HDR Metadata Capture and Auto Playback Detection
- RS-422 support on 9-pin external connector
- Low profile form factor also available with internal RS-422 header
- Reference/LTC Input on card (Analog black burst or Tri-level)
- Compatible with apps from Adobe, Avid, Apple, OBS Project, and Telestream
- Supports Apple silicon
- Three year warranty



## KONA® | LHi \$1,955



### KONA LHi

- 2K/HD/SD up to 50/60p
- 2x 3G-SDI spigots (In, Out) with 8-channel embedded audio
- 2x HDMI 1.3 ports (In, Out) with 8-channel embedded audio
- YCbCr 4:2:2 10-bit and HD HFR workflows supported
- 10-bit LUT support (.cube)
- Real time up, down and cross-conversion for HD and SD with pristine 10-bit quality
- Compatible with leading creative apps
- Supports Apple silicon
- Supports AES and Analog Audio I/O for Telestream Wirecast
- Included breakout cable for Ref (Analog or Tri-level), RS-422, 2-ch AES/EBU, Analog composite or S-video, or SD/HD component
- Extend external connectivity with KLHi-BOX breakout box
- Three year warranty



KLHi-BOX

\$685

## KONA® | LHe Plus \$1,375



### KONA LHe Plus

- HD-SDI and SD-SDI up to 1080 30p / 720 60p
- 3x 1.5G-SDI spigots (1x In, 2x Out) with 8-channel embedded audio
- YCbCr 4:2:2 10-bit workflows supported
- Real time HD to SD down-conversion with pristine 10-bit quality
- Compatible with leading creative apps
- Supports Apple silicon
- Supports AES and Analog Audio I/O for Telestream Wirecast
- Included breakout cable for Ref (Analog Color Black or Composite Sync), RS-422, 2-ch AES/EBU, Analog composite or S-video, or SD/HD component, 2-ch analog audio I/O
- Extend external connectivity with KL-BOX-LH breakout box
- Three year warranty



KL-BOX-LH

\$685



# KONA® | Software Compatibility

KONA cards are cross-platform and compatible with a wide range of professional macOS®, Windows®, and Linux® software applications.

AJA hardware is compatible with a wide range of professional software applications on macOS, Windows, and Linux. AJA drivers and software create a seamless integration between best of class creative tools and AJA's high quality hardware that lets you focus on the work, not the technology.

View our software compatibility chart for the following categories:

Audio | Color | Dailies/Archiving | Editorial | Effects | Graphics/Virtual | Ingest/Playout | Restoration  
SDI / IP Bridging | Streaming/Live Production | Test/Measure | VJ / Live Video Performance | Video Assist



[View Compatibility Chart](#)

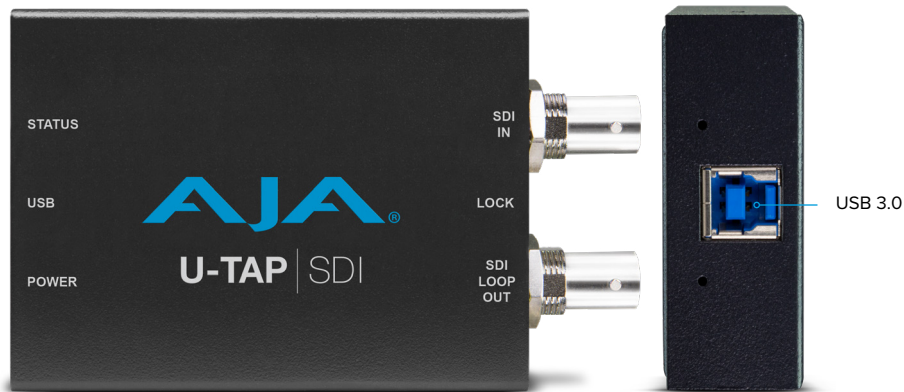


# U-TAP

## USB 3.0 Powered 3G-SDI and HDMI Capture

**3** YEAR WARRANTY

### U-TAP | SDI \$455



Size (W x D x H): 104.14 x 60.96 x 25.4 mm

#### U-TAP SDI

- HD/SD Capture up to 1080 60p over USB
- 1x 3G-SDI BNC with 2-channel embedded audio
- 1x 3G-SDI SDI loop-out
- 1x USB 3.0 (USB 3.2, Gen 1) connector
- YCbCr 4:2:2 10-bit workflows supported
- HD/SD and scaled (USB) raster support
- Configurable behavior upon loss of input signal
- UVC/UAC capture, no third party driver required
- Compact, silent and pocketable
- Bus-powered, no power adapter required
- macOS, Windows, and Linux supported
- Universal application compatibility
- Three year warranty

[View Compatibility Chart](#)



### U-TAP | HDMI \$455



Size (W x D x H): 83.82 x 60.96 x 25.4 mm

#### U-TAP HDMI

- HD/SD Capture up to 1080 60p over USB
- 1x HDMI 1.4a with 2-channel embedded audio
- 1x USB 3.0 (USB 3.2, Gen 1) connector
- YCbCr 4:2:2 10-bit workflows supported
- RGB 4:4:4 / YCbCr 4:4:4 10/12-bit (raster / frame rate dependent)
- HD/SD and scaled (USB) raster support
- Configurable behavior upon loss of input signal
- UVC/UAC capture, no third-party driver required
- Compact, silent and pocketable
- Bus-powered, no power adapter required
- macOS, Windows, and Linux supported
- Universal application compatibility
- Three year warranty

[View Compatibility Chart](#)



# T-TAP<sup>®</sup> Thunderbolt™ Powered SDI and HDMI Output

3 YEAR WARRANTY

T-TAP<sup>®</sup> | Pro \$1,145



Size (W x D x H): 127.0 x 127.0 x 25.4 mm

## T-TAP Pro



- 4K/UltraHD/2K/HD/SD Output/Monitoring up to 50/60p
- 1x 12G-SDI BNC with 16-channel embedded audio
- 1x HDMI 2.0 with 8-channel embedded audio
- 1x Thunderbolt 3 connector
- Compact, silent, mobile form factor with front panel Audio Levels Meter
- RGB 4:4:4 12-bit, YCbCr 4:2:2 10-bit and HFR workflows supported
- 12-bit and 10-bit LUT support (.cube)
- VPID signaling for SDR/HDR Transfer Characteristics, Colorimetry, and Luminance via SDI
- PQ, HLG, HDR10, and Dolby Vision supported
- Compatible with OBS Studio, Telestream Wirecast, Adobe Creative Suite, Apple FCP, Avid Media Composer, and many more
- Supports Apple silicon
- Headphone jack and quick access audio level control for mobile environment
- Three year warranty

[View Compatibility Chart](#)



# ColorBox In-Line Color and HDR/SDR Transform

**3** YEAR  
WARRANTY

12G-SDI and HDMI 2.0, AJA Color, Colorfront,  
ORION-CONVERT, BBC HLG LUTs, NBCU LUTs, ACES **\$2,075**

ColorBox from AJA is a compact, high performance color management device designed for the color conversion and color correction needs of broadcast, live events, and on-set applications. Supporting Standard Dynamic Range (SDR), High Dynamic Range (HDR), and Wide Color Gamut (WCG) signals, it utilizes 12G-SDI and HDMI 2.0 for single wire 4K/UltraHD HDR up to 4:2:2 10-bit 60p or 4:4:4 12-bit 30p, with six unique color processing pipelines and the ability to also do down-conversions and crops on the fly.

Built around a 33-point 3D LUT processor with tetrahedral interpolation, ColorBox's AJA Color Pipeline provides an additional four 1D LUTs and two 3x3 matrices that are each individually configurable even as Proc Amps or RGB color correctors for unparalleled control over your color pipelines.



Size (W x D x H): 104.1 x 191.6 x 42.1 mm

## ColorBox

- 10, 12-bit 12G-SDI I/O for up to 4K/UltraHD HDR/WCG
- 10, 12-bit HDMI 2.0 output for up to 4K/UltraHD HDR/WCG
- Ultra-low latency, less than 0.5 of a video line
- Extensive AJA Color Pipeline processing in 12-bit RGB:
  - 33pt. 3D LUT processor with tetrahedral interpolation
  - 7x processing nodes plus Overlay
- Six Color Processing Pipelines
  - AJA Color
  - Colorfront (Free and Licensable option)
  - ORION-CONVERT (Licensable option)
  - BBC HLG LUTs (Licensable option)
  - NBCU LUTs
  - ACES
- HDR signaling metadata management
- Down-convert 4K to 2K or UltraHD to HD via SDI and/or HDMI outputs
- 4K/2K Crop for HDMI output
- Built-in Frame Store
  - Test Pattern Generator up to 4K/UltraHD, 14x test patterns built-in
  - Up to 4K/UltraHD frame capture and recall
- Overlay information and images on output
- Extensive API for third party control integrations
- Embedded web server for remote control

## Pipelines

ColorBox comes with a range of image processing pipelines to choose from. Some Pipelines are designed specifically for live broadcast or live event needs. Others, like the AJA Color Pipeline (ACP), offer great flexibility for more control over each step of a transform for any application. A selection of Colorfront algorithmic transforms, NBCU LUTs, and ACES pipelines are also built-in. Licensable pipelines like Colorfront, ORION-CONVERT, or BBC HLG LUTs will display a watermark over the image until a license is applied, offering you the ability to evaluate the color processing pipeline prior to purchasing the optional licenses.

## Live Television and Concerts

4K/UltraHD SDR and HDR pipelines for live television and concert production. OB trucks and other live event infrastructure can easily use ColorBox to convert SDR signals to HDR and HDR to SDR. With its ultra-low latency, the ColorBox is an indispensable tool for managing complex color conversions during live broadcasts. For hardware based control, Skaarhoj and Cyanview have integrated native control of ColorBox.

## On-Set Look Management

Ensure that the content captured on-set will represent the vision of the cinematographer and director all the way through post. A DIT can easily manage workflows to load multiple looks, make adjustments as needed, and save up to 4K reference images for dailies, postproduction, and later use. Pomfort Livegrade Pro and Studio, Assimilate Live Looks and Live Assist, and QTAKE Video Assist software integrate easily, offering native control of ColorBox in real time.

## Compact Form Factor

ColorBox is very compact, requiring a small footprint on your desktop, and you can easily rackmount up to four ColorBox devices in just 1RU. It is also lightweight at just 1 lb (0.5 kg), making it perfect for DIT and mobile applications.

## Down-Conversion / Crop

ColorBox now has the ability to down-convert 4K to 2K or UltraHD to HD via SDI and HDMI outputs and has independent controls for each output. The ColorBox also can even center crop 4K to UltraHD or 2K to HD on the HDMI output for monitoring on a wider range of HDMI displays.



# HDR | Image Analyzer 12G

**3** YEAR  
WARRANTY

## HDR Waveform, Histogram and Vectorscope Monitoring **\$22,465**

The HDR Image Analyzer 12G fuses AJA's proven audio and video I/O technology with Colorfront's powerful Colorfront Engine™. The impressive 1RU device delivers a comprehensive toolset for multi-channel monitoring and analysis of Log, SDR, and HDR standards, including Hybrid Log Gamma (HLG) and Perceptual Quantizer (PQ) for up to 8K/UltraHD2 workflows over SDI and NDI.

The HDR Image Analyzer 12G offers 4x 12G-SDI inputs, dual 10 GbE, and DisplayPort output connections for the UltraHD HDR capable GUI.

New v3.0 software features multi-channel signal analysis (up to 4x 4K/UltraHD), NDI connectivity to mix and match SDI and NDI signal analysis, SDI embedded Dolby Vision dynamic metadata inspection and presentation, support for native ARRI LogC4, and expanded 8K/UltraHD2 format support.

### HDR Image Analyzer 12G

- UltraHD GUI for high resolution picture display, including PQ support for HDR capable displays
- Supports up to four simultaneous channels of signal analysis, up to 4x 4K/UltraHD
- New 4-channel view is available
- Configurable layouts allow you to put the tool you need in the window you need it in
- Mix and match SDI and NDI signal monitoring and analysis
- Support for display referred SDR (Rec.709), HDR ST.2084/PQ, and HLG analysis
- Support for scene referred ARRI, Canon, Panasonic, RED, and Sony camera color spaces
- Dolby Vision dynamic metadata inspection and presentation
- Precision CIE graph, vectorscope, waveform, and histogram support
- False color mode to easily spot out of gamut/out of brightness pixels
- NIT levels and audio phase metering
- Line mode to focus a region of interest onto a single horizontal or vertical line
- File base error logging with timecode
- Three year warranty



Size (W x D x H): 436.88 x 429.26 x 43.18 mm

### 8K/UltraHD2 Analysis

HDR Image Analyzer 12G provides the necessary connectivity to support advanced 8K/UltraHD2 HDR and SDR production monitoring and analysis workflows. Providing the same high quality and precision analysis tools available for all other video formats, this powerful analyzer is a smart investment for today's needs as well as ensuring you are ready for tomorrow's.

### Input Support

With input support for many leading camera Log formats as well as SDR, HLG, and PQ monitoring from a range of sources, HDR Image Analyzer 12G takes the pain out of HDR monitoring. Supporting both SDI and NDI connectivity, hybrid workflows are simplified. With a wide range of analysis tools and automatic error logging with timecode stamping, HDR Image Analyzer 12G ensures your production achieves the desired final results.

### ACES Support

The Academy Color Encoding System (ACES) is fast becoming an industry standard for managing color throughout the life cycle of a motion picture or television production. HDR Image Analyzer 12G supports an ACES Grading Color Space and offers ACEScct signal analysis for real time integration with ACES workflows.

### Configurable Layout

HDR Image Analyzer 12G's interface provides a quadrant layout for viewing your tools and footage as you work. Quick key shortcuts provide preconfigured common layouts for how your tools and views are presented. For further customization, you can also choose any tool for any SDI or NDI channel to be shown in any of the quadrants.

# FS | HDR

**5** YEAR  
WARRANTY

## Real Time HDR/WCG Transformations, Multi-Channel Converter and Frame Sync

**\$9,955**

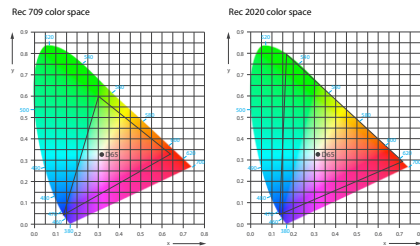
Powered by Colorfront Engine™ proprietary video processing algorithms, with real time parametric controls for HDR transforms, color correction, and SDR preview of HDR transforms for Single Master HDR workflows, FS-HDR also serves as a full, 1-channel up, down, cross-converter for 4K/UltraHD/2K/HD and in 4-channel mode offers four simultaneous and independent channels of 2K/HD conversions. FS-HDR offers ganged operational control of multiple FS-HDRs supporting 8K/UltraHD2, as well as Colorfront Engine TV, Live, and Film Modes, ACES support, Dynamic Multi-Channel LUT capabilities, BBC HLG LUTs, NBCU LUTs, ability to upload custom 3D LUTs, extensive audio processing, and more.

The latest update features a new Motion Adaptive Deinterlacer control, Channel to Channel Sync control, and updated v1.7 BBC HLG LUTs.



Size (W x D x H): 444.5 x 406.4 x 44.45 mm

### Dynamic Range/Color Gamut



Modern cameras are inherently HDR capable with their wide dynamic ranges available from the sensor on, and for live events and broadcasts, it's crucial to translate their Log and Gamut capabilities to the accepted standards.

### HDR Workflows for UltraHD/HD

- Single channel mode for 4K/UltraHD/2K/HD conversion and HDR processing
- Four channel mode for multi-channel 2K/HD conversion and HDR processing
- Colorfront Engine Live, Film, and TV Modes covering all applications
- v1.7 BBC HLG LUT mode with an array of BBC transformations for HLG (Hybrid Log Gamma), including Scene-Referred and Display-Referred conversions
- NBCU LUTs developed by NBCUniversal Media, LLC for live television productions
- Dynamic LUT mode for third party software integration
- User LUT mode for importing 3D .cube LUTs
- ASC CDL support
- Auto or configurable HDR Signaling of SDI for SDR/PQ/HLG

### Input Formats

- SDR BT.709 100 Nits
- SDR Extended BT.709
- PQ BT.2020 1000 Nits
- PQ P3D65 1000 Nits
- Hybrid Log Gamma BT.2100
- HLG Extended BT.709
- HLG Extended BT.2100
- Sony® S-Log3 S-Gamut3
- Sony S-Log3 S-Gamut3 Cine
- Sony S-Log3 BT.2020
- ARRI Log C Wide Gamut
- ARRI LogC4 Wide Gamut 4
- Panasonic® V-Log
- RED Log3G10 Wide Gamut
- Canon Log 2
- Canon Log 3
- ACEScct

### Output Formats

From multi-channel HD to true 4K, FS-HDR carries your HDR / SDR video over 3G-SDI, optional fiber, or 12G-SDI to wherever it needs to go, from switchers, routers, and monitors, to huge LED displays and more. You can even convert your sources to ACEScct for use further along the chain.

- SDR BT.709 100 Nits
- SDR Extended BT.709
- PQ BT.2020 1000 Nits
- PQ BT.2020 Constrained to P3
- PQ P3D65 1000 Nits
- Hybrid Log Gamma BT.2100
- HLG Extended BT.709
- HLG Extended BT.2100
- Sony S-Log3 S-Gamut3
- Sony S-Log3 BT.2020
- ARRI Log C Wide Gamut
- ARRI LogC4 Wide Gamut 4
- ACEScct

# FS 4K/2K/HD/SD Frame Sync and Conversion

**5** YEAR WARRANTY

## FS | 4 \$6,525

4-Channel 2K/HD/SD or 1-Channel 4K/UltraHD Frame Sync and Up, Down, Cross-Converter



Size (W x D x H): 444.5 x 406.4 x 44.45 mm

### FS4

- Single channel mode for 4K/UltraHD/2K/HD/SD conversion and processing
- Four channel mode for multi-channel 2K/HD/SD conversion and processing
- Up, down, cross-conversion
- Auto or configurable HDR Signaling of SDI and HDMI outputs for SDR/PQ/HLG
- Region of Interest scaling
- Motion Adaptive Deinterlacer control
- Channel to Channel Sync control
- 4x 3G-SDI In and 4x 3G-SDI Out
- 12G-SDI HD-BNC I/O with Optional SFPs
- 12G/6G/3G-SDI Fiber I/O with Optional SFPs
- Two Sample Interleave (2SI) or Square Division (Quadrant) input pixel mapping
- 1x 3G-SDI and 1x HDMI Monitor Outputs
- 16-channel embedded audio per SDI I/O, 8 AES I/O, 64-ch MADI Fiber and 64-channel MADI Coax I/O
- Five year warranty

## FS | 2 \$5,145

2-Channel HD/SD Frame Sync and Up, Down, Cross-Converter



Size (W x D x H): 438.15 x 368.3 x 44.45 mm

### FS2

- 2x 3G-SDI Inputs
- 2x Fiber 3G-SDI Inputs (optional)
- HD component YPbPr, SMPTE-274 (3x BNC) Input
- HDMI I/O
- 2x 3G-SDI Outputs
- 2x Fiber 3G-SDI Outputs (optional)
- HD component YPbPr, SMPTE-274 (3x BNC) Output
- Up, down, cross-conversion
- 16-channel, 24-bit SMPTE-272/299 SDI embedded audio, 48 kHz sample rate, synchronous I/O
- 16-channel, 24-bit AES/EBU audio, 48 kHz sample rate, synchronous or nonsynchronous, internal sample rate conversion (8x XLR via 25-pin breakout cable)
- Five year warranty

# FS1-X \$4,575

HD/SD Frame Sync and Up, Down, Cross-Converter  
with linear Frame Rate Converter



Size (W x D x H): 482.6 x 406.4 x 44.45 mm

## FS1-X

- 2x 3G-SDI Inputs
- 2x Fiber 3G-SDI Inputs (optional)
- HD component YPbPr, SMPTE-274 (3x BNC) Input
- HDMI I/O
- 2x 3G-SDI Outputs
- 2x Fiber 3G-SDI Outputs (optional)
- HD component YPbPr, SMPTE-274 (3x BNC) Output
- Composite SD Analog I/O
- 64-ch MADI Fiber and 64-Ch MADI Coax I/O
- 8-channel balanced analog I/O, DB-25F 25-pin Power connector (Tascam pinout)
- 16-channel AES/EBU I/O (BNC), DB-25F 25-pin connector
- Five year warranty

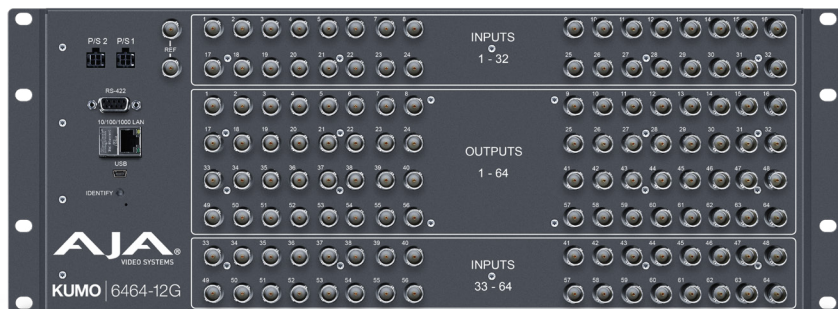


# KUMO® Compact 12G-SDI and 3G-SDI Routers

**5** YEAR  
WARRANTY

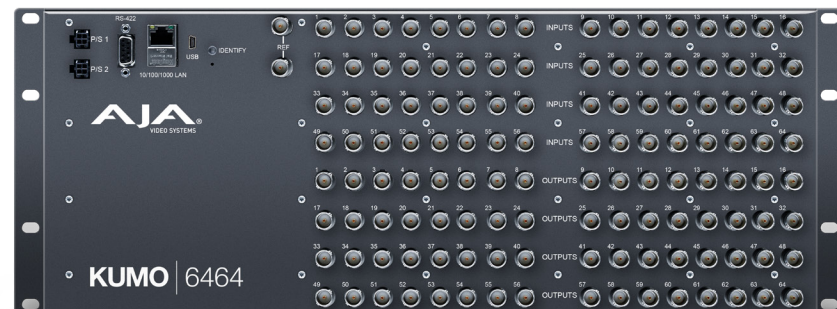
KUMO compact routers offer flexible video configuration with ease of control with the CP range of control panels or via the network. Adapt as your needs expand, from 3G-SDI to 12G-SDI with up to 64 inputs and 64 outputs.

KUMO routers can be configured for ganged dual and quad port routing, allowing users to group together multiple inputs and outputs for dual link, 4K/UltraHD, and with 12G-SDI models, 8K workflows.



**KUMO 6464-12G** \$14,999

Size (W x D x H): 441.96 x 39.12 x 177.8 mm



**KUMO 6464** \$10,295

Size (W x D x H): 441.96 x 39.12 x 177.8 mm



**KUMO 3232-12G** \$5,265

Size (W x D x H): 441.96 x 39.12 x 88.9 mm



**KUMO 3232** \$4,575

Size (W x D x H): 441.96 x 39.12 x 88.9 mm



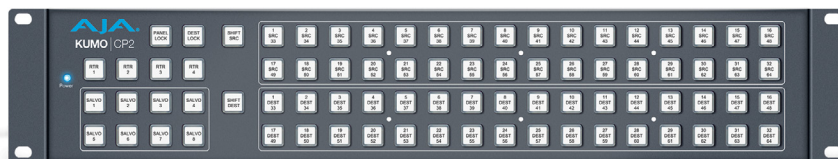
**KUMO 1616-12G** \$3,315

Size (W x D x H): 441.96 x 39.12 x 44.45 mm



**KUMO 1616** \$2,635

Size (W x D x H): 441.96 x 39.12 x 44.45 mm



**KUMO CP2** \$1,255

Size (W x D x H): 441.96 x 33.02 x 88.9 mm



**KUMO CP** \$915

Size (W x D x H): 441.96 x 33.02 x 44.45 mm

# DANTE-12GAM



## Dante®, AES67 and SMPTE ST 2110-30 SDI Audio Embedder/Disembedder

\$2,295 Single Channel, \$2,995 Dual Channel ✦ Dante | 4K | HDR

The DANTE-12GAM is a Dante audio embedder/disembedder equipped with 12G-SDI input and output and with dual etherCON GigE Ethernet ports, capable of simultaneously embedding and disembedding up to 16-channels\* of audio in and out for a total of 32\* audio channels in a compact device. A second video I/O is enabled on units equipped with fiber or BNC SFPs bringing up to 64-channels of audio, which can be ordered at time of sale or post-sale.

The DANTE-12GAM is your portal to a wide array of IP audio solutions. Dante networks support not only the Dante audio streams but also AES67 and SMPTE ST 2110-30 AoIP, providing massive flexibility for all your IP audio needs.

No matter the configuration you choose, you can rely on AJA's legendary build quality and support to give you peace of mind whether you're an individual creator or broadcasting the largest live events.

*\*up to 64 channels of audio with the dual channel option/upgrade.*



Size (W x D x H): 190.37 x 126.75 x 41.55 mm



### DANTE-12GAM Features

- Support for 12G/6G/3G/1.5G SDI audio embedding to and from the Dante audio ecosystem
- Single video channel with independent 12G-SDI Input and Output ports, each supporting 16 audio channels, totaling 32-channels of Dante audio in a compact, portable design
- PTPv2, SMPTE ST 2110-30, AES67 compatible
- 1x Primary and 1x Secondary etherCON GigE ports for Dante network redundancy
- PoE+ on Primary Ethernet simplifying wiring
- Internal SDI signal generator, which enables transmitting Dante audio channels over SDI without having an external SDI source signal
- AJA Web UI support for remote signal status and configuration
- USB-C port for initial Static IP configuration using free AJA eMini-Setup software
- Front panel LCD information and configuration screen
- 4x Physical control buttons (Back, Enter, Up, Down)
- Upgradable to a second video channel via additional SFP and license, expanding support to up to 64 channels
- 12V, 60W Power Supply Included
- Five year warranty

### DANTE-12GAM-TR-LC

All of the DANTE-12GAM features with the addition of:

- Dual video channels with independent 12G-SDI Input and Output fiber connectors, each supporting 16 audio channels, totaling 64 Dante audio I/O channels in a compact design
- 1x Dual LC 12G Fiber Transceiver SFP (FiberLC-TR-12G SFP)
- 2x Internal Signal Generators which enable transmitting Dante audio channels over SDI without having an external SDI source signal



### DANTE-12GAM-TR-BNC

All of the DANTE-12GAM features with the addition of:

- Dual video channels with independent 12G-SDI Input and Output ports, each supporting 16 audio channels, totaling 64 Dante audio I/O channels in a compact design
- 1x Dual BNC 12G-SDI Coax Transceiver SFP (BNC-TR-12G SFP) with Input and Output up to 4K/UltraHD
- 2x Internal Signal Generators which enable transmitting Dante audio channels over SDI without having an external SDI source signal



# Mini-Converters

**5** YEAR  
WARRANTY

## The Power to Convert and Deliver

From broadcast, production, to post and live events, AJA Mini-Converters offer the most complete range of compact, stand-alone conversion and infrastructure solutions, designed to the highest standards in reliability and quality. Our converters cover a full range of 4K, UltraHD, HD, and SD capabilities to meet your needs.

**AJA Mini-Matrix:** Converter Search Software  
[www.aja.com/software/mini-matrix](http://www.aja.com/software/mini-matrix)



### INFRASTRUCTURE



**12GM \$1,235**  
12G-SDI to/from SDI Muxer/Demuxer

### INFRASTRUCTURE



**FS-Mini \$915**  
3G/HD/SD-SDI Utility  
Frame Synchronizer

### INFRASTRUCTURE



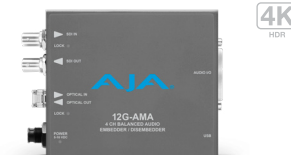
**GEN10 \$455**  
HD/SD Sync Generator

### INFRASTRUCTURE



**12G-AM \$1,295**  
12G-SDI 8-Channel AES  
Embedder/Disembedder

### INFRASTRUCTURE



**12G-AM-TR \$1,835**  
12G-SDI 8-Channel AES  
Embedder/Disembedder with  
LC Fiber TR SFP

### INFRASTRUCTURE



**12G-AM-T \$1,705**  
12G-SDI 8-Channel AES  
Embedder/Disembedder  
with LC Fiber Tx SFP

### INFRASTRUCTURE



**12G-AM-T-ST \$1,835**  
12G-SDI 8-Channel AES  
Embedder/Disembedder  
with ST Fiber Tx SFP

### INFRASTRUCTURE



**12G-AM-R \$1,705**  
12G-SDI 8-Channel AES  
Embedder/Disembedder,  
with LC Fiber Rx SFP

INFRASTRUCTURE



**12G-AM-R-ST \$1,835**

12G-SDI 8-Channel AES Embedder/Disembedder, with ST Fiber Rx SFP

INFRASTRUCTURE



**3G-AM \$1,035**

3G-SDI 8-Channel AES Embedder/Disembedder

INFRASTRUCTURE



**12G-AMA \$1,295**

12G-SDI 4-Channel Analog Audio Embedder/Disembedder

INFRASTRUCTURE



**12G-AMA-TR \$1,835**

12G-SDI 4-Channel Analog Audio Embedder/Disembedder With LC Fiber TR SFP

INFRASTRUCTURE



**12G-AMA-T \$1,705**

12G-SDI 4-Channel Analog Audio Embedder/Disembedder With LC Fiber Tx SFP

INFRASTRUCTURE



**12G-AMA-T-ST \$1,835**

12G-SDI 4-Channel Analog Audio Embedder/Disembedder With ST Fiber Tx SFP

INFRASTRUCTURE



**12G-AMA-R \$1,705**

12G-SDI 4-Channel Analog Audio Embedder/Disembedder With LC Fiber Rx SFP

INFRASTRUCTURE



**12G-AMA-R-ST \$1,835**

12G-SDI 4-Channel Analog Audio Embedder/Disembedder With ST Fiber Rx SFP

INFRASTRUCTURE



**3G-AMA \$1,035**

3G-SDI Analog Audio Embedder/Disembedder

INFRASTRUCTURE



**12GDA \$655**

1x6 12G-SDI Reclocking Distribution Amplifier

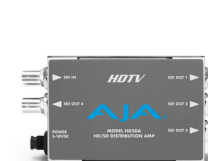
INFRASTRUCTURE



**3GDA \$525**

1x6 3G/HD/SD Reclocking Distribution Amplifier

INFRASTRUCTURE



**HD5DA \$265**

1x4 HD/SD-SDI Distribution Amplifier

INFRASTRUCTURE



**ADA4 \$605**

4-Channel Bidirectional Audio A/D and D/A Converter

INFRASTRUCTURE



**C10DA \$235**

1x6 Analog Video Distribution Amplifier



HDMI



**Hi5-12G \$1,035**  
12G-SDI to HDMI 2.0 Mini-Converter

HDMI



**Hi5-12G-TR \$1,555**  
12G-SDI to HDMI 2.0 Mini-Converter, with LC Fiber TR SFP

HDMI



**Hi5-12G-R \$1,295**  
12G-SDI to HDMI 2.0 Mini-Converter, with LC Fiber Rx SFP

HDMI



**Hi5-12G-R-ST \$1,435**  
12G-SDI to HDMI 2.0 Mini-Converter, with ST Fiber Rx SFP

HDMI



**Hi5-4K-Plus \$865**  
4K/UltraHD (4x 3G-SDI) to full HDMI 2.0 Mini-Converter

HDMI



**Hi5-Plus \$525**  
3G-SDI to HDMI Mini-Converter with Embedded Audio

HDMI



**Hi5-Fiber \$915**  
3G-SDI over Fiber to HDMI Video and Audio Mini-Converter

HDMI



**HA5-12G \$1,035**  
HDMI 2.0 to 12G-SDI Mini-Converter

HDMI



**HA5-12G-T \$1,295**  
HDMI 2.0 to 12G-SDI Mini-Converter, with LC Fiber Tx SFP

HDMI



**HA5-12G-T-ST \$1,435**  
HDMI 2.0 to 12G-SDI Mini-Converter, with ST Fiber Tx SFP

HDMI



**HA5-4K \$865**  
4K/UltraHD HDMI to 4K/UltraHD SDI Mini-Converter

HDMI



**HA5-Plus \$525**  
HDMI to 3G-SDI Mini-Converter with Embedded Audio

HDMI



**HA5-Fiber \$915**  
HDMI to 3G-SDI over Fiber Video and Audio Mini-Converter



SCAN CONVERT



**ROI-HDMI \$1,295**

HDMI to 3G-SDI Scan Converter with Region of Interest and Frame Synchronizer

SCAN CONVERT



**ROI-SDI \$1,295**

3G-SDI to HDMI/3G-SDI Scan Converter with Region of Interest and Frame Synchronizer

SCAN CONVERT



**ROI-DVI \$1,295**

DVI to 3G-SDI Scan Converter with Region of Interest and Frame Synchronizer

SCAN CONVERT



**ROI-DP \$1,295**

Display Port to 3G-SDI Scan Converter with Region of Interest and Frame Synchronizer

SCALING



**UDC \$915**

Up, Down, Cross Mini-Converter with Embedded Audio and Frame Synchronizer

SCALING



**HDP3 \$915**

3G-SDI to DVI-D Mini-Converter with Embedded Audio

IP



**IPT-10G2-HDMI \$1,675**

HDMI Video and Audio to SMPTE ST 2110 IP Converter with Hitless Switching (ST 2022-7)

IP



**IPT-10G2-SDI \$1,825**

3G-SDI Video and Audio to SMPTE ST 2110 IP Converter with Hitless Switching (ST 2022-7)

IP



**IPR-10G2-HDMI \$1,675**

SMPTE ST 2110 IP Video and Audio to HDMI Converter with Hitless Switching (ST 2022-7)

IP



**IPR-10G2-SDI \$1,825**

SMPTE ST 2110 IP Video and Audio to 3G-SDI Converter with Hitless Switching

ANALOG



**V2Digital™ \$455**

Analog Video to HD/SD-SDI Mini-Converter

ANALOG



**V2Analog™ \$455**

HD/SD-SDI to Analog Audio/Video Mini-Converter

# FiDO – Optical Fiber Converters

**5** YEAR  
WARRANTY

## The Power to Convert and Deliver

FiDO Mini-Converters offer unmatched flexibility and cost efficiency for 12G-SDI, 6G-SDI, and 3G-SDI Fiber conversion, allowing for long cable runs up to 10km for single mode FiDOs and up to 700 m (2296 ft) for OM4 and 300 m (984 ft) for OM3 multi-mode fiber optic cables when using Multi-Mode models or SFPs. Choose LC, ST, or SC connectors, depending on the converter model. FiDO converters use compact, low profile, rugged enclosures that work well in tight spaces around and behind equipment racks, displays, in trucks and on camera.

**AJA Mini-Matrix:** Converter Search Software  
[www.aja.com/software/mini-matrix](http://www.aja.com/software/mini-matrix)



OPTICAL FIBER



**FiDO-TR-12G \$1,725**  
1-Channel 12G-SDI/LC Single Mode LC Fiber Transceiver

OPTICAL FIBER



**FiDO-2T-12G \$1,725**  
2-Channel 12G-SDI to Single Mode LC Fiber Transmitter

OPTICAL FIBER



**FiDO-T-12G \$1,025**  
1-Channel 12G-SDI to Single Mode LC Fiber Transmitter, with SDI Loop Out

OPTICAL FIBER



**FiDO-T-12G-ST \$1,185**  
1-Channel 12G-SDI to Single Mode ST Fiber Transmitter, with SDI Loop Out

OPTICAL FIBER



**FiDO-2R-12G \$1,725**  
2-Channel Single Mode LC Fiber to 12G-SDI Receiver

OPTICAL FIBER



**FiDO-R-12G \$1,025**  
1-Channel Single Mode LC Fiber to 12G-SDI Receiver, with Dual SDI Outputs

OPTICAL FIBER



**FiDO-R-12G-ST \$1,185**  
1-Channel Single Mode ST Fiber to 12G-SDI Receiver, with Dual SDI Outputs

OPTICAL FIBER



4K

**FiDO-4T \$1,945**

4-Channel 3G-SDI to Single Mode LC Fiber Transmitter

OPTICAL FIBER



4K

**FiDO-4T-ST \$1,945**

4-Channel 3G-SDI Single Mode ST Fiber Transmitter

OPTICAL FIBER



4K

**FiDO-4T-MM \$2,585**

4-Channel 3G-SDI to Multi-Mode LC Fiber Transmitter

OPTICAL FIBER



4K

**FiDO-4R \$1,945**

4-Channel Single Mode LC Fiber to 3G-SDI Receiver

OPTICAL FIBER



4K

**FiDO-4R-ST \$1,945**

4-Channel 3G-SDI Single Mode ST Fiber to 3G-SDI Receiver

OPTICAL FIBER



4K

**FiDO-4R-MM \$2,585**

4-Channel Multi-Mode LC Fiber to 3G-SDI Receiver

OPTICAL FIBER



**FiDO-2T \$845**

2-Channel 3G-SDI to Single Mode LC Fiber Transmitter

OPTICAL FIBER



**FiDO-2T-MM \$1,155**

2-Channel 3G-SDI to Multi-Mode LC Fiber Transmitter

OPTICAL FIBER



**FiDO-2R \$845**

2-Channel Single Mode Mode LC Fiber to 3G-SDI Receiver

OPTICAL FIBER



**FiDO-2R-MM \$1,155**

2-Channel Multi-Mode LC Fiber to 3G-SDI Receiver

OPTICAL FIBER



**FiDO-TR \$845**

1-Channel 3G-SDI/LC Single Mode LC Fiber Transceiver

OPTICAL FIBER



**FiDO-TR-MM \$1,153**

1-Channel 3G-SDI/LC Multi-Mode LC Fiber Transceiver

OPTICAL FIBER



**FiDO-T \$585**

1-Channel 3G-SDI to Single Mode LC Fiber Transmitter, with SDI Loop Out

OPTICAL FIBER



**FiDO-T-ST \$585**

1-Channel 3G-SDI to Single Mode ST Fiber Transmitter, with SDI Loop Out

OPTICAL FIBER



**FiDO-T-SC \$585**

1-Channel 3G-SDI to Single Mode  
SC Fiber Transmitter, with SDI Loop Out

OPTICAL FIBER



**FiDO-T-MM \$905**

1-Channel 3G-SDI to Multi-Mode  
LC Fiber Transmitter, with SDI Loop Out

OPTICAL FIBER



**FiDO-R \$585**

1-Channel Single Mode LC Fiber to  
3G-SDI Receiver, with Dual SDI Outputs

OPTICAL FIBER



**FiDO-R-ST \$585**

1-Channel Single Mode ST Fiber to  
3G-SDI Receiver, with Dual SDI Outputs

OPTICAL FIBER



**FiDO-R-SC \$585**

1-Channel Single Mode SC Fiber to  
3G-SDI Receiver, with Dual SDI Outputs

OPTICAL FIBER



**FiDO-R-MM \$905**

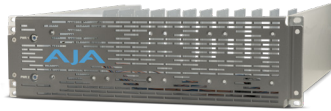
1-Channel Multi-Mode LC Fiber to  
3G-SDI Receiver, with Dual SDI  
Outputs

# Mini-Converter Accessories

**5** YEAR  
WARRANTY

ACCESSORIES

NEW



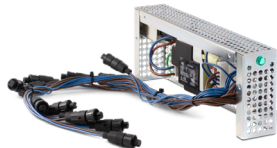
**DRM2-PLUS-P1 \$1,395**  
3RU Mini-Converter Rackmount Frame with 288W Power Supply and Passive Faceplate.  
*Available with optional redundant Power Supply \$1,595*

ACCESSORIES



**DRM2-PLUS-CX \$75**  
Next Generation Converter Power Adapter Cable  
Male-Mini-Con-X-to-Female-Mini-XLR adapter cable, 12"

ACCESSORIES



**DRM- P/S ASSY \$495**  
DRM Spare 50W Power Supply

ACCESSORIES



**PWR-CABLE \$105**  
P-TAP to 2x AJA Mini-Converter Power Connectors

ACCESSORIES

NEW



**DRM2-PLUS-A1 \$1,595**  
3RU Mini-Converter Rackmount Frame with 288W Power Supply and Active Fan-Cooled Faceplate  
*Available with optional redundant Power Supply \$1,795*

ACCESSORIES



**Y-Cable Assembly (1) \$49 or (12-pack) \$465**  
Optional Y-Cable Powers Two AJA Mini-Converters via One Standard DRM2-Plus Power Cable

ACCESSORIES



**CMP \$135**  
Converter Mounting Plate

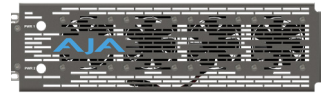
ACCESSORIES



**P-TAP-CBL \$85**  
P-Tap to AJA Mini-Converter Power Cable

ACCESSORIES

NEW



**DRM2-PLUS-AF \$200**  
Active Faceplate Option for DRM2-Plus

ACCESSORIES



**DRM \$775**  
Mini-Converter Rackmount Frame with 50W Power Supply

ACCESSORIES



**RMB \$19**  
Rackmount Bracket

ACCESSORIES



**12G-AM BNC Cable \$95**  
Optional Breakout Cable with 1x 25 Pin D Male Connector to 8 BNC Connectors

ACCESSORIES



**DRM2-Plus Carrier (1) \$25 or (12-pack) \$250**  
Mini-Converter Mount that is Rugged, Simple to Use, and Easy to Access from the Front or Rear of the DRM2-Plus Frame

ACCESSORIES



**DRM FCP \$155**  
Faceplate for DRM

ACCESSORIES



**DWP-Plus \$79**  
Universal Power Supply

ACCESSORIES



**12G-AM XLR Cable \$95**  
Optional Breakout Cable with 1x 25 Pin D Male Connector to 8 XLR Connectors

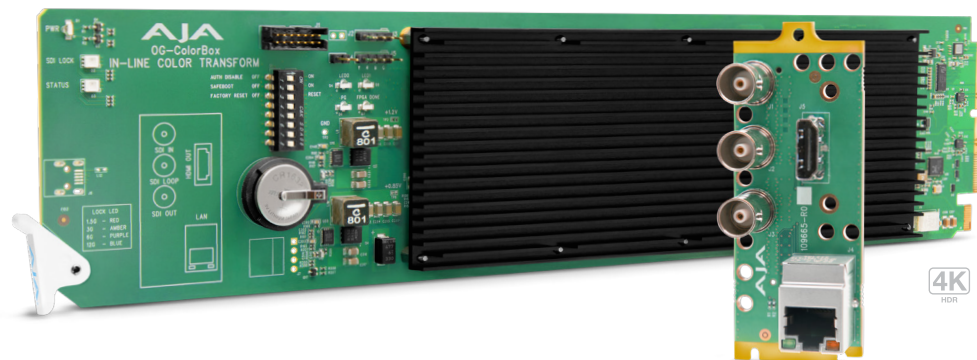


For critical broadcast applications, AJA openGear compatible converter cards, with DashBoard software support, provide the highest levels of quality and reliability for use in OG frames, including the AJA OG-X-FR.

## openGear | ColorBox \$2,075

### openGear In-line HDR/SDR Algorithmic and LUT Color Transforms

OG-ColorBox is a high performance, color management openGear card designed for the color conversion and color correction needs of broadcast, live events, and on-set applications. It utilizes 12G-SDI for single wire 4K/UltraHD HDR/WCG/SDR signal conversions up to 4:2:2 10-bit 60p or 4:4:4 12-bit 30p, with six unique color processing pipelines and the ability to also do down-conversions and crops on the fly.

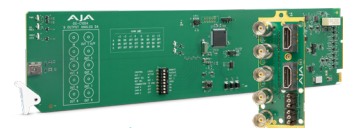


#### COLOR

#### OG-ColorBox

- 10, 12-bit 12G-SDI I/O for up to 4K/UltraHD HDR/WCG
- 10, 12-bit HDMI 2.0 output for up to 4K/UltraHD HDR/WCG
- Ultra-low latency, less than 0.5 of a video line
- Extensive AJA Color Pipeline processing in 12-bit RGB
  - 33pt. 3D LUT processor with tetrahedral interpolation
  - 7x processing nodes plus Overlay
- Six Color Processing Pipelines
  - AJA Color
  - Colorfront (Licensable option)
  - ORION-CONVERT (Licensable option)
  - BBC HLG LUTs (Licensable option)
  - NBCU LUTs
  - ACES
- HDR signaling metadata management
- Down-convert 4K to 2K or UltraHD to HD via SDI and/or HDMI outputs
- 4K/2K Crop for HDMI output
- Built-in Frame Store
  - Test Pattern Generator up to 4K/UltraHD, 14 test patterns built-in
  - Up to 4K/UltraHD frame capture and recall
- Overlay information and images on output
- Extensive API for third party control integrations
- Embedded web server for remote control
- Power: 19 watts
- Hot-swappable
- Rear I/O card included
- Two slots required for each card
- Compatible with OG-X-FR and OG-3-FR openGear frames
- Redundant power supply option with openGear frame

INFRASTRUCTURE



**OG-C10DA \$465**

openGear Analog Video 1x9  
Distribution Amplifier

INFRASTRUCTURE

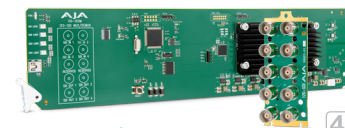


**OG-DANTE-12G-AM \$3,085**

openGear 12G-SDI/DANTE 64-Channel  
Embedder/Disembedder



INFRASTRUCTURE

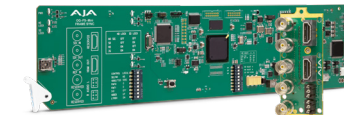


**OG-12GM \$1,235**

openGear 12G-SDI to/from SDI Muxer/Demuxer



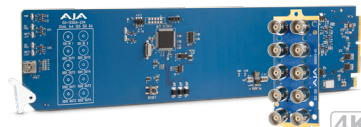
INFRASTRUCTURE



**OG-FS-Mini \$915**

openGear 3G/HD/SD-SDI  
Utility Frame Synchronizer

INFRASTRUCTURE

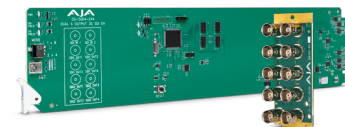


**OG-12GDA-2x4 \$905**

openGear Dual 1x4 12G-SDI  
Distribution Amplifiers



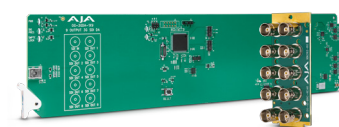
INFRASTRUCTURE



**OG-3GDA-2x4 \$725**

openGear 1x8 or Dual 2x4 3G-SDI  
Reclocking DA

INFRASTRUCTURE



**OG-3GDA-1x9 \$655**

openGear 1x9 3G-SDI Reclocking DA

INFRASTRUCTURE

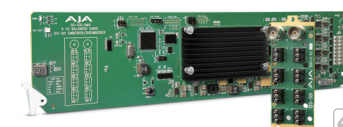


**OG-12G-AM \$1,295**

openGear 12G-SDI 16-Channel AES/EBU  
Embedder/Disembedder



INFRASTRUCTURE

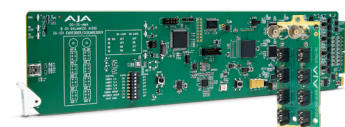


**OG-12G-AMA \$1,295**

openGear 12G-SDI 8-Channel Analog  
Audio Embedder/Disembedder



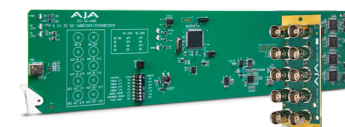
INFRASTRUCTURE



**OG-3G-AMA \$1,035**

openGear 3G-SDI Analog Audio  
Embedder/Disembedder

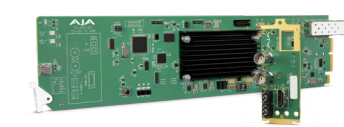
INFRASTRUCTURE



**OG-3G-AMD \$1,035**

openGear 3G-SDI 8-Channel 24-bit AES  
Embedder/Disembedder

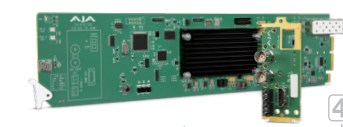
HDMI



**OG-Hi5-12G \$1,035**

openGear 12G-SDI to HDMI 2.0  
Conversion up to 4K 60p

HDMI

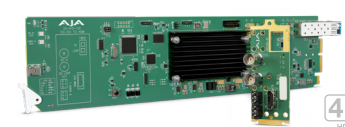


**OG-Hi5-12G-TR \$1,555**

openGear 12G-SDI to HDMI 2.0  
Conversion and LC Fiber Transceiver



HDMI

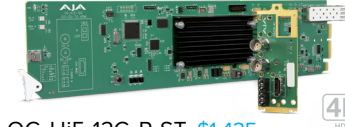


**OG-Hi5-12G-R \$1,295**

openGear 12G-SDI to HDMI 2.0  
Conversion and LC Fiber Receiver



HDMI



**OG-Hi5-12G-R-ST \$1,435**

openGear 12G-SDI to HDMI 2.0  
Conversion and ST Fiber Receiver



HDMI

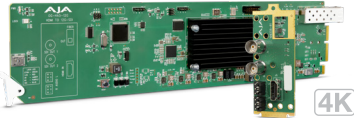


**OG-Hi5-4K-Plus \$865**

openGear 4K/UltraHD (4x 3G-SDI)  
to full HDMI 2.0 Converter



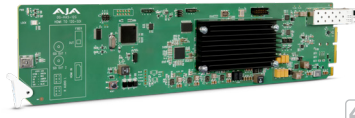
HDMI



**OG-HA5-12G \$1,035**  
openGear HDMI 2.0 to 12G-SDI Converter



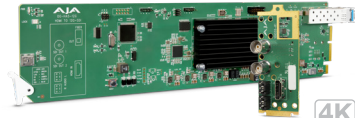
HDMI



**OG-HA5-12G-T \$1,295**  
openGear HDMI 2.0 to 12G-SDI Conversion  
with LC Fiber Transmitter



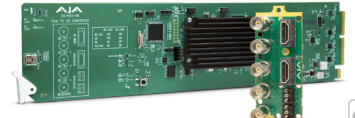
HDMI



**OG-HA5-12G-T-ST \$1,435**  
openGear HDMI 2.0 to 12G-SDI Conversion  
with ST Fiber Transmitter



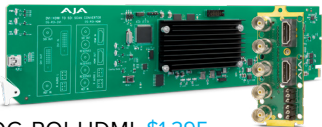
HDMI



**OG-HA5-4K \$865**  
openGear 4K/UltraHD/2K/HD/SD HDMI 2.0  
to 3G-SDI Conversion



SCAN CONVERT



**OG-ROI-HDMI \$1,295**  
openGear HDMI to 3G-SDI Scan Converter  
with Region of Interest and Frame Synchronizer

SCAN CONVERT



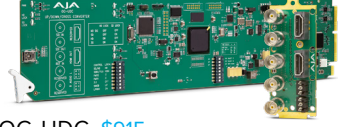
**OG-ROI-SDI \$1,295**  
openGear 3G-SDI to HDMI/3G-SDI Scan  
Converter with Region of Interest and Frame  
Synchronizer

SCAN CONVERT



**OG-ROI-DVI \$1,295**  
openGear DVI to 3G-SDI Scan Converter  
with Region of Interest and Frame Synchronizer

SCALING



**OG-UDC \$915**  
openGear 3G-SDI Up, Down,  
Cross-Converter

ACCESSORIES



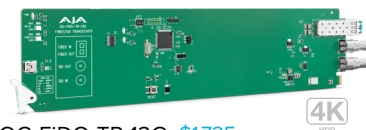
**OG-X-FR \$2,035**  
2RU openGear Compatible Rackframe

ACCESSORIES



**OG-X-PS \$925**  
Optional Redundant Power Supply  
for OG-X-FR Frame

OPTICAL FIBER



**OG-FiDO-TR-12G \$1,725**  
openGear 1-Channel 12G-SDI/LC  
Single Mode LC Fiber Transceiver

OPTICAL FIBER



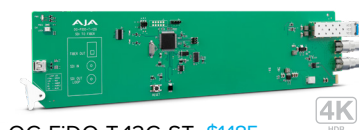
**OG-FiDO-2T-12G \$1,725**  
openGear 2-Channel 12G-SDI to Single Mode  
LC Fiber Transmitter

OPTICAL FIBER



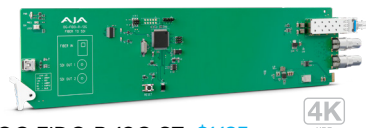
**OG-FiDO-2R-12G \$1,725**  
openGear 2-Channel Single Mode LC Fiber  
to 12G-SDI Receiver

OPTICAL FIBER



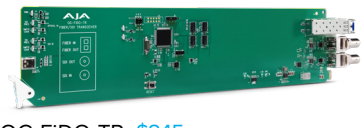
**OG-FiDO-T-12G-ST \$1,185**  
openGear 1-Channel 12G-SDI to Single Mode  
ST Fiber Transmitter

OPTICAL FIBER



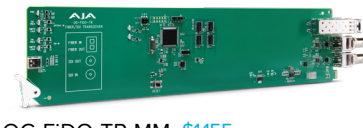
**OG-FiDO-R-12G-ST \$1,185**  
openGear 1-Channel Single Mode ST Fiber  
to 12G-SDI Receiver

OPTICAL FIBER



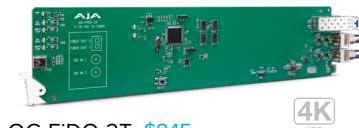
**OG-FiDO-TR \$845**  
openGear 1-Channel 3G-SDI/LC  
Single Mode LC Fiber Transceiver

OPTICAL FIBER



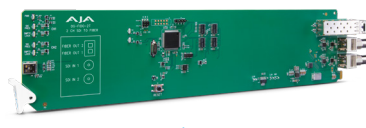
**OG-FiDO-TR-MM \$1,155**  
openGear 1-Channel 3G-SDI/LC  
Multi-Mode LC Fiber Transceiver

OPTICAL FIBER



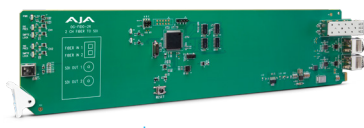
**OG-FiDO-2T \$845**  
openGear 2-Channel 3G-SDI to  
Single Mode LC Fiber Transmitter

OPTICAL FIBER



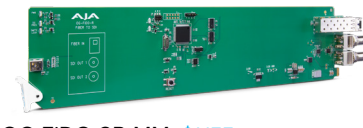
**OG-FiDO-2T-MM \$1,155**  
openGear 2-Channel 3G-SDI to  
Multi-Mode LC Fiber Transmitter

OPTICAL FIBER



**OG-FiDO-2R \$845**  
openGear 2-Channel Single Mode  
LC Fiber to 3G-SDI Receiver

OPTICAL FIBER



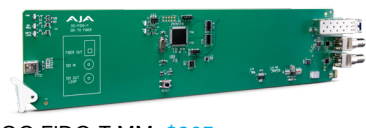
**OG-FiDO-2R-MM \$1,155**  
openGear 2-Channel Multi-Mode  
LC Fiber to 3G-SDI Receiver

OPTICAL FIBER



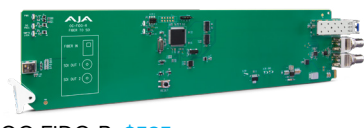
**OG-FiDO-T \$585**  
openGear 1-Channel 3G-SDI to Single Mode LC  
Fiber Transmitter, with SDI Loop Out

OPTICAL FIBER



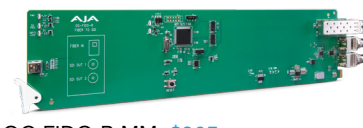
**OG-FiDO-T-MM \$905**  
openGear 1-Channel 3G-SDI to Multi-Mode  
LC Fiber Transmitter, with SDI Loop Out

OPTICAL FIBER



**OG-FiDO-R \$585**  
openGear 1-Channel Single Mode  
LC Fiber to 3G-SDI Receiver

OPTICAL FIBER



**OG-FiDO-R-MM \$905**  
openGear 1-Channel Multi-Mode  
LC Fiber to 3G-SDI Receiver

## SFP Options Start at \$265

AJA provides a range of products and optional SFP modules to allow you to make the most of your fiber infrastructure. You have the flexibility in many cases to order your AJA model variant with an SFP already installed at time of purchase, and in other cases you may wish to order additional optional SFPs alongside your initial purchase or post purchase.

### AJA SFP Configurator

The AJA SFP configurator is the fastest way to ensure that you accurately select the most appropriate SFP for your workflow needs for the appropriate AJA product you wish to integrate into your facility infrastructure.



### Single Mode SC SFP Modules

Single Channel SC Fiber Transmitters and Receivers

Model	Price	Description
FIBERSC-1-TX	\$265	1-Channel 3G-SDI Single Mode SC Fiber Transmitter
FIBERSC-1-RX	\$265	1-Channel 3G-SDI Single Mode SC Fiber Receiver

### Single Mode LC SFP Modules

Single and Dual Channel LC Fiber Transmitters and Receivers

Model	Price	Description
FIBERLC-2-TX	\$395	2-Channel 3G-SDI Single Mode LC Fiber Transmitter
FIBERLC-2-RX	\$395	2-Channel 3G-SDI Single Mode LC Fiber Receiver
FIBERLC-1-TX	\$265	1-Channel 3G-SDI Single Mode LC Fiber Transmitter
FIBERLC-1-RX	\$265	1-Channel 3G-SDI Single Mode LC Fiber Receiver

### Multi-Mode LC SFP Modules

Single and Dual Channel LC Fiber Transmitters and Receivers

Model	Price	Description
FIBERLC-2TX-MM	\$455	2-Channel 3G-SDI Multi-Mode LC Fiber Transmitter
FIBERLC-2RX-MM	\$455	2-Channel 3G-SDI Multi-Mode LC Fiber Receiver
FIBERLC-1TX-MM	\$395	1-Channel 3G-SDI Multi-Mode LC Fiber Transmitter
FIBERLC-1RX-MM	\$395	1-Channel 3G-SDI Multi-Mode LC Fiber Receiver

### Single Mode 12G SFP Modules

Single and Dual Channel 12G LC, ST Fiber, HD-BNC Transmitters, Receivers and Transceivers

Model	Price	Description
FIBERLC-2TX-12G	\$585	2-Channel 12G-SDI Single Mode LC Fiber Transmitter
FIBERLC-2RX-12G	\$585	2-Channel 12G-SDI Single Mode LC Fiber Receiver
FIBERLC-TR-12G	\$585	1-Channel 12G-SDI Single Mode LC Fiber Transceiver
FIBERLC-1TX-12G	\$395	1-Channel 12G-SDI Single Mode LC Fiber Transmitter
FIBERLC-1RX-12G	\$395	1-Channel 12G-SDI Single Mode LC Fiber Receiver
FIBERST-1TX-12G	\$525	1-Channel 12G-SDI Single Mode ST Fiber Transmitter
FIBERST-1RX-12G	\$525	1-Channel 12G-SDI Single Mode ST Fiber Receiver
BNC-TR-12G	\$585	2-Channel Dual BNC 12G Coax Transceiver SFP



# DEVELOPER

## PCIe I/O Solutions for Developer Partners

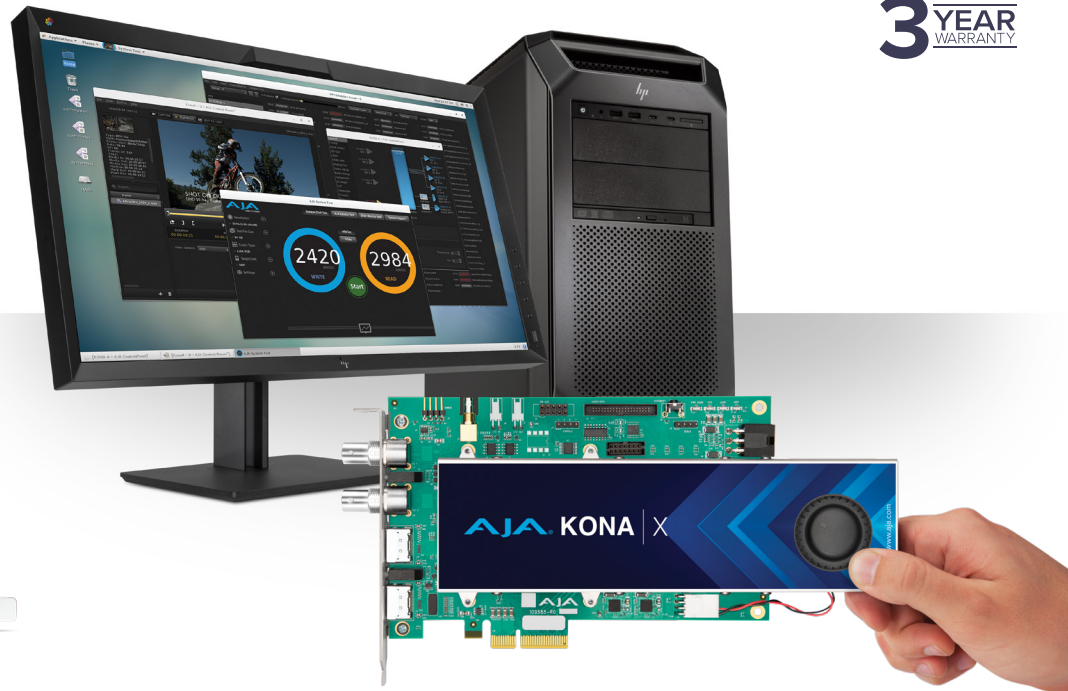
The Corvid lineup offers OEM Developer partners a wealth of options when used with AJA's powerful SDK on Windows, macOS, and Linux.

AJA's KONA, Io, and T-TAP products are also compatible with the SDK, opening even more I/O choices

Learn More: [www.aja.com/category/developer](http://www.aja.com/category/developer)

Apply today: [www.aja.com/developer/request](http://www.aja.com/developer/request)

**3** YEAR  
WARRANTY



### Corvid 88 \$3,495

High density 12-bit RGB or 10-bit YCbCr with simultaneous 4K input/output, or eight independent mixed channel I/O.

*Low Profile and Fanless versions available.*



### Corvid 44 12G \$4,235

8K or multi-channel 4K, 12-bit RGB or 10-bit YCbCr with four independent bidirectional 12G-SDI I/O and HD-BNCs.

*Low Profile and Fanless versions available.*



### Corvid 44 12G BNC \$3,945

8K or multi-channel 4K, 12-bit RGB or 10-bit YCbCr with four independent bidirectional 12G-SDI I/O and full-size BNCs.

*Fanless version available.*



### Corvid 44 \$2,455

Multi-channel 12-bit RGB or 10-bit YCbCr with four independent mixed channel I/O or single 4K Input or Output.

*Low Profile and Fanless versions available.*



### Corvid 44 BNC \$2,455

Multi-channel 12-bit RGB or 10-bit YCbCr with four independent mixed channel I/O or single 4K Input or Output; Full-sized BNCs.

*Fanless version available.*



### KONA IP25 \$6,995

SMPTe ST 2110 I/O up to 2x Tx and 2x Rx 4K/ UltraHD with ST 2022-7 redundancy with up to 16-ch of audio per stream. In-band and Out-of-band management.



### KONA X \$3,845

4K, 12-bit RGB or 10-bit YCbCr full-size, full-size BNC 12G-SDI and full-size HDMI I/O. Ultra-low latency with streaming (DMA).

*Fanless version available.*



### KONA XM \$4,365

4K, 12-bit RGB or 10-bit YCbCr full-size, full-size BNC 12G-SDI and full-size HDMI I/O. Ultra-low latency with streaming (DMA).

*Fanless version available. Medical device ready*



## About AJA Video Systems, Inc

Since 1993, AJA Video has been a leading manufacturer of video interface and conversion solutions, bringing high quality, cost effective digital video products to the professional, broadcast and postproduction markets. AJA products are designed and manufactured at our facilities in Grass Valley, California, and sold through an extensive sales channel of resellers and systems integrators around the world. For further information, please see our website at [www.aja.com](http://www.aja.com).

06302025

AJA Video Systems, Inc.

Grass Valley, California

[www.aja.com](http://www.aja.com) • [sales@aja.com](mailto:sales@aja.com) • [support@aja.com](mailto:support@aja.com)

[www.aja.com](http://www.aja.com)

