

# KONA LH

Capture, Display, Convert



## Installation and Operation Manual

Version 15.2  
Published June 3, 2019



# Notices

---

## Trademarks

---

AJA® and Because it matters.® are registered trademarks of AJA Video Systems, Inc. for use with most AJA products. AJA™ is a trademark of AJA Video Systems, Inc. for use with recorder, router, software and camera products. Because it matters.™ is a trademark of AJA Video Systems, Inc. for use with camera products.

CION®, Corvid Ultra®, Io®, Ki Pro®, KONA®, KUMO®, ROI® and T-Tap® are registered trademarks of AJA Video Systems, Inc.

AJA Control Room™, KiStor™, Science of the Beautiful™, TruScale™, TruZoom™, V2Analog™ and V2Digital™ are trademarks of AJA Video Systems, Inc.

All other trademarks are the property of their respective owners.

## Copyright

---

Copyright © 2019 AJA Video Systems, Inc. All rights reserved. All information in this manual is subject to change without notice. No part of the document may be reproduced or transmitted in any form, or by any means, electronic or mechanical, including photocopying or recording, without the express written permission of AJA Video Systems, Inc.

## Contacting AJA Support

---

When calling for support, have all information at hand prior to calling. To contact AJA for sales or support, use any of the following methods:

Telephone	+1.530.271.3190
FAX	+1.530.271.3140
Web	<a href="https://www.aja.com">https://www.aja.com</a>
Support Email	<a href="mailto:support@aja.com">support@aja.com</a>
Sales Email	<a href="mailto:sales@aja.com">sales@aja.com</a>

# Contents

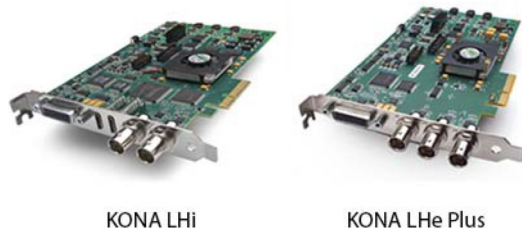
---

Notices . . . . .	2
Trademarks . . . . .	2
Copyright . . . . .	2
Contacting AJA Support . . . . .	2
<b>Chapter 1 – Introduction . . . . .</b>	<b>5</b>
Overview . . . . .	5
KONA Models Covered in this Manual . . . . .	5
AJA Software & Utilities . . . . .	5
System Requirements . . . . .	6
Disk Storage Methods . . . . .	7
KONA LHi Features . . . . .	7
KONA LHe Plus Features . . . . .	8
Cable Connections . . . . .	9
KONA LHi and LHe Plus Connectors . . . . .	9
Using Breakout Boxes . . . . .	10
KLHi-Box for KONA LHi . . . . .	10
KL-Box for KONA LHe Plus . . . . .	11
Detailed Connector Descriptions . . . . .	11
LHe Plus/LHi Connectors . . . . .	11
LHi Only Connectors . . . . .	12
<b>Chapter 2 – Installation . . . . .</b>	<b>13</b>
Installation Overview . . . . .	13
AJA System Test Application . . . . .	13
Unpacking . . . . .	13
Shipping Box Contents . . . . .	13
Installing the KONA Card . . . . .	14
Cabling the System . . . . .	15
KONA LHi Cable Connections . . . . .	15
KONA LHe Plus Cable Connections . . . . .	16
Installing KONA LH Software . . . . .	17
Download . . . . .	17
Software Package Installation and Re-installation . . . . .	17
Firmware Update Procedure . . . . .	17
<b>Chapter 3 – Operation . . . . .</b>	<b>19</b>
Using KONA with Professional Video /Audio Software . . . . .	19
Capture Formats . . . . .	19
AJA Control Panel Overview . . . . .	19
AJA Control Panel User Interface . . . . .	20
Controlling Application . . . . .	22
Presets . . . . .	22
Default Preferences . . . . .	23
Function Screens . . . . .	24
Control Panel Operation . . . . .	25
Control Screen . . . . .	25
Format Screen . . . . .	27
Input Select Screen . . . . .	29
SDI Output Screen . . . . .	30
HDMI Screen (LHi Only) . . . . .	31
Analog Out Screen . . . . .	33
Video Setup Screen . . . . .	34
Audio Setup Screen . . . . .	34
Downstream Keyer Screen . . . . .	36
LUT Screen . . . . .	38
Timecode Screen . . . . .	41
Presets Screen . . . . .	42

Firmware Screen . . . . .	43
Info Screen . . . . .	44
Who is Controlling KONA? . . . . .	44
Using Multiple AJA Products . . . . .	45
Notes on Using Multiple AJA Products: . . . . .	46
Using 8-bit Versus 10-bit Video. . . . .	46
<b>Appendix A – Specifications . . . . .</b>	<b>47</b>
KONA LHi Tech Specs . . . . .	47
KONA LHe Plus Tech Specs . . . . .	50
<b>Appendix B – Safety &amp; Compliance. . . . .</b>	<b>53</b>
<b>Warranty and Liability Information . . . . .</b>	<b>60</b>
Limited Warranty on Hardware. . . . .	60
Limitation of Liability . . . . .	61
Governing Law and Language; Your Rights. . . . .	61
<b>Index. . . . .</b>	<b>62</b>

# Chapter 1 – Introduction

---



## Overview

---

The AJA KONA series brings the highest quality 2K, HD, and SD video and audio to computers running Mac, Windows or Linux Operating Systems.

## KONA Models Covered in this Manual

---

This manual covers the installation and operation of these models:

- KONA LHi
- KONA LHe Plus

## AJA Software & Utilities

---

AJA's KONA software and hardware were developed for powerful integrated video/audio capture, editing, and production with a variety of 3rd-party software. With KONA and a qualified computer, you have the ultimate system for production, post-production, broadcast, and streaming work. AJA software is distributed as a unified package which includes all the software, firmware, plugins, and utility programs for AJA's Io, KONA, and T-TAP products.

Four retail packages are available, one for Mac, one for Windows, and two for Linux (one package for Ubuntu, one package for Red Hat/CentOS).

*NOTE: Support for the Linux OS retail drivers is based on the Linux application used and comes from the application's vendor.*

To download AJA software, go to the AJA website:

<https://www.aja.com/en/support/downloads>

For a complete software compatibility list, see the AJA website link:

<https://www.aja.com/en/category/edit/compatibility>

## Mac, Windows and Linux Packages

---

These packages include:

Drivers

AJA device drivers for tightly integrated hardware/software operation.

## AJA Control Panel

---

The Control Panel provides:

- Source selection and control of your AJA hardware.
- A block diagram to show visually what routing and processing is being performed.

## AJA Control Room

---

Control Room is a cross-platform software application for ingest, playback and output with AJA devices.

## AJA System Test

---

System Test provides accurate and detailed evaluations of drive and system performance statistics, allowing you to measure the capabilities of your system for recording and playing back various resolutions and codecs. The application includes:

- System Disk Test
- AJA Device Test
- Disk + Device Test
- System Report

The application tests Read and Write, Capture and Playback speeds in both Megabytes per second and Frames per second. The disk speed tests differ from standard disk I/O performance applications in that they specifically test the system under conditions typically encountered with video capture, playback, and editing.

*NOTE: Theoretically the best test is to fill your storage disk to 80% and then test capture at the highest data rate you will use.*

## Additional with Mac and Windows Packages

---

### 3rd-Party Plugins

---

AJA provided plugins for popular 3rd-party Professional Video Applications from Adobe, Avid, Apple, Telestream, and others.

# System Requirements

---

AJA Video recommends that your system meet minimum hardware and software requirements to achieve a satisfactory level of performance. Updates to system requirements are subject to change.

*NOTE: See Software Vendor system requirements for GPU recommendations and additional hardware requirements and recommendations.*

AJA recommends:

- Mac OS 10.12 Sierra or later
- Win 10 or later with all updates
- Linux Redhat/CentOS 7
- Linux Ubuntu 14.04 LTS and Ubuntu 16.04 LTS
- 2.5 GHz quad core i7 minimum, for HD
- 3.5 GHz eight core minimum, faster processors and more cores recommended, for UltraHD/4K workflows, especially with high frame rate
- 16GB RAM minimum, 32GB or more recommended, especially for UltraHD/4K or High Frame Rate applications

- A reasonably fast and powerful graphics card, with plenty of on-board memory. Examples (may be specific to application version and/or host CPU) include:
  - Nvidia K5200
  - Nvidia K4200
  - Nvidia M6000
  - Nvidia M5000
  - Nvidia M4000
  - AMD W7100
  - AMD W8100
- Media storage with adequate bandwidth to sustain the capture and playback of the material you expect to be working with.

*NOTE: For large scale installations with shared storage, or for very high performance requirements, AJA recommends consultation with an experienced a system integrator. A consultant will be able to assist with many important variables.*

## Disk Storage Methods

---

To ensure performance and quality, the disk storage system used with the workstation must be able to meet the demands of storing real-time uncompressed media. At the very minimum, the disk storage system must be able to provide and maintain a consistent transfer rate from the workstation to disk (read/write). There are a variety of system configurations and peripherals that can provide this level of performance.

For more on disk storage performance see ["AJA System Test Application" on page 13](#).

## KONA LHi Features

---

The KONA LHi card offers a large number of unique features for optimum quality, ease of use, and support for a wide variety of workflows and environments. KONA LHi provides flexible standard definition and high definition capture and playback, a hardware-based converter for working in mixed SD/HD environments—and it supports both analog and digital audio/video I/O—including HDMI.

### Video I/O

---

- 10-bit uncompressed QuickTime capture card
- 3G/HD/SD SDI I/O
- HDMI v1.3a w/Deep Color at 30 bits per pixel input/output
- 12-bit SD and HD Analog Component/Composite/S-Video I/O

### Conversion

---

- Broadcast quality hardware-based 10-bit down-conversion
- Broadcast quality hardware based 10-bit up-conversion
- Broadcast quality hardware based 10-bit cross-conversion (1080 to 720 and 720 to 1080)
- Broadcast quality hardware based 10-bit SD aspect ratio conversion (anamorphic to letterbox, etc.)

### Audio I/O

---

- 2-channel analog balanced XLR audio I/O

- 2-channel AES XLR audio I/O
- 8-channel SDI embedded audio I/O

#### Signal Timing

---

- HD/SD genlock on analog video inputs
- LTC Input (on Reference input)

#### Cabling

---

- Cables standard
- Optional KLHi-Box Breakout Box—provides rack mounting and flexible easy I/O (KLHi-Box cabling is included with the KLHi-Box).

#### KONA LHi Audio

---

KONA LHi supports 2-channel 24-bit 48kHz or 96kHz AES audio via XLR connections, and 8 channel embedded 24 bit 48kHz audio over HDMI or the same single SDI connection as the video. If you are using a digital deck—you'll have the proper connections to the deck.

For analog audio, KONA LHi provides two-channel balanced audio input and output. If you purchase the optional KLHi-Box breakout box, you also get two-channel unbalanced audio output (RCA jacks).

KONA LHi also features AES input sample rate conversion; this feature eliminates the requirement for audio source synchronization. Sample rate converters auto-lock to any AES or HDMI input, 32-96kHz, and then convert it to 24 bit 48kHz audio, perfectly locked to internal KONA LHi video. Sample rate conversion is done at very high quality (over 120db THD). (HDMI audio can be 20 to 24 bit and will be saved as 24 bit samples.)

## KONA LHe Plus Features

---

The KONA LHe Plus card offers a large number of unique features for optimum quality, ease of use, and support for a wide variety of workflows and environments. KONA LHe Plus provides flexible standard definition and high definition capture and playback, a hardware down-converter for working in mixed SD/HD environments—and it supports both analog and digital audio/video I/O.

#### Video I/O

---

- 10-bit uncompressed SD/HD QuickTime capture card
- 12-bit HD Analog Component I/O
- 12-bit SD Analog Component/Composite/S-Video I/O
- One SDI or HD-SDI Input
- Two independent SDI/HD-SDI outputs

#### Conversion

---

- Broadcast quality hardware-based 10-bit down-conversion

#### Audio I/O

---

- 2-channel analog balanced XLR audio I/O
- 2-channel AES XLR audio I/O
- 8-channel SDI embedded audio I/O



## Signal Timing

---

- HD/SD genlock on analog video inputs

## Cabling

---

- Cables standard
- Optional KL-Box Breakout Box—provides rack mounting and flexible easy I/O (KL-Box cabling is included with the KL-Box). When ordering, specify a KL-Box for the KONA LHe Plus since it uses a unique cable.

## KONA LHe Plus Audio

---

KONA LHe Plus supports two-channel 24-bit 48kHz AES audio via XLR connections, and eight-channel embedded 24-bit 48kHz audio over the same single SDI connection as the video. If you are using a digital deck—you'll have the proper connections to the deck.

For analog audio, KONA LHe Plus provides two-channel balanced audio input and output. If you purchase the optional KL-Box breakout box, you also get two-channel unbalanced audio output (RCA jacks).

KONA LHe Plus also features AES input sample rate conversion; this feature eliminates the requirement for audio source synchronization. Sample rate converters auto-lock to any AES input, 32-96KHz, and then convert it to 24 bit 48KHz audio, perfectly locked to internal KONA LHe Plus video. Sample rate conversion is done at very high quality (over 120db THD).

# Cable Connections

---

KONA offers unsurpassed cable connectivity for a video/audio capture card. Connections are made via the breakout cable (included with the card) and connectors mounted on the KONA Card endplate.

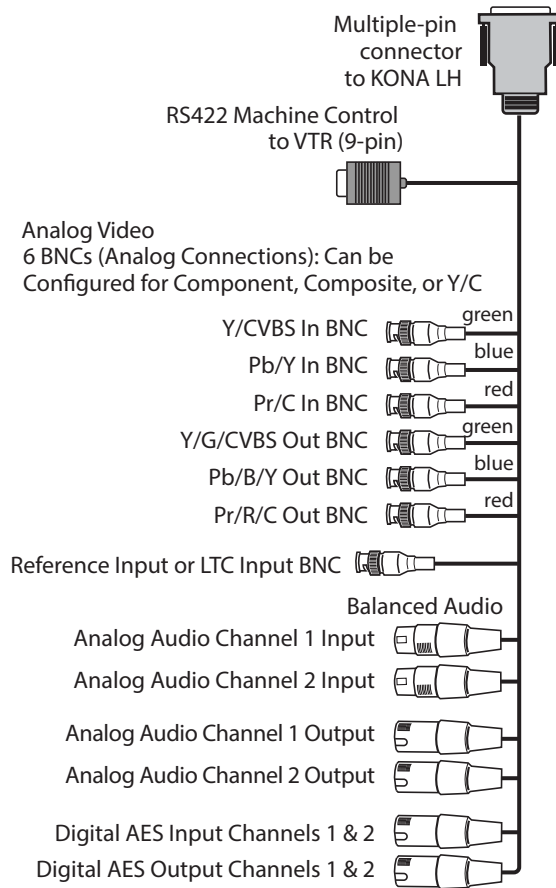
## KONA LHi and LHe Plus Connectors

---

The breakout cable used for both KONA LHi and LHe Plus models provides:

- Reference Input (BNC connector)
- Component/Composite/S Video Input (3x BNC)
- Component/Composite/S Video Output (3x BNC)
- AES In (2x XLR)
- AES Out (2x XLR)
- Balanced Audio In (2x XLR)
- Balanced Audio Out (2x XLR)
- RS-422 Machine Control (9-pin)

Figure 1. Breakout Cable for LHe Plus and LHi Models



#### KONA LHi Endplate

Connectors on the KONA LHi card endplate additionally provide:

- Standard-definition or High-definition SDI input (1 BNC) and output (1 BNC)
- HDMI input and output (2x HDMI mini-connectors)

#### KONA LHe Plus Endplate

The KONA LHe Plus endplate provides one BNC for SDI input and two independent SDI output BNCs.

## Using Breakout Boxes

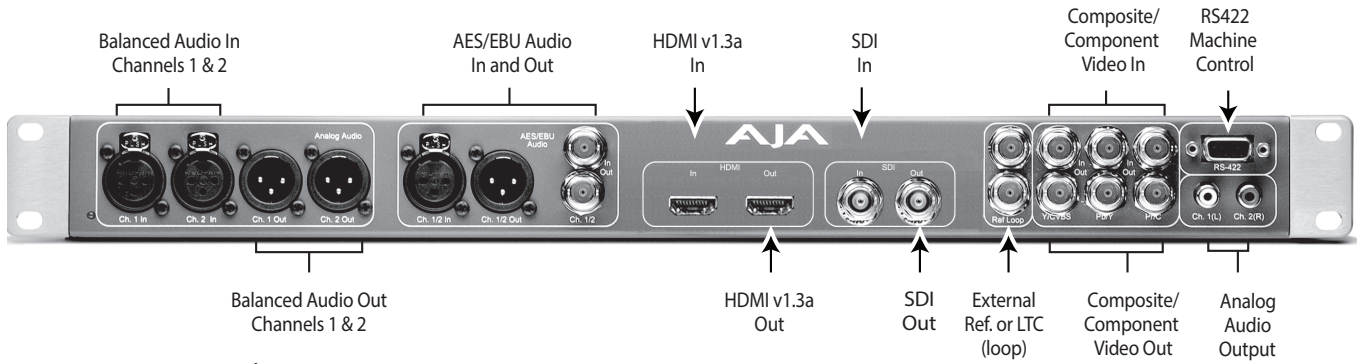
The KONA product line offers two optional 19" 1RU rack-mountable breakout boxes that attach to the KONA card via cables that connect to the back of the breakout box. These cables are supplied with the breakout box. The breakout boxes offer the same inputs and outputs as the standard breakout cables and more. Breakout boxes can be easily rack mounted or placed on top of a broadcast monitor or editing desk.

### KLHi-Box for KONA LHi

The KLHi-Box offers the same connections as the KL-Box except a single connector is provided for the following: SDI input, SDI output, HDMI v1.3a input, and HDMI v1.3a output.

*NOTE: The HDMI connectors on the breakout box are full-size, not mini as on the LHi endplate*

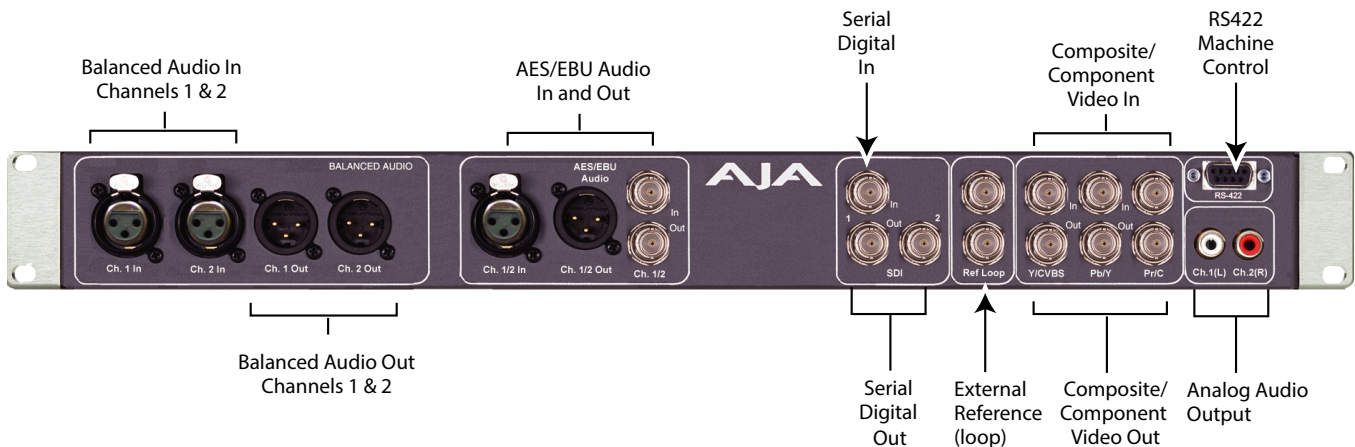
*Figure 2. KLHi-Box Model Breakout Box*



## KL-Box for KONA LHe Plus

The KL-Box is connected via one 60-pin to 60-pin, and one 3-BNC to 3-BNC cable. When you purchase the KL-Box, you get two-channel unbalanced audio output (2 RCA Jacks) not available with the standard cable. When ordering a KL-Box, specify the KONA card model you'll be using the KL box with to ensure you get the proper cable set.

*Figure 3. KL-Box Model Breakout Box*



## Detailed Connector Descriptions

### LHe Plus/LHi Connectors

Connectors on the standard cable set are labeled by their function for easy installation and maintenance. Connectors on the optional KL-Box are similarly labeled

#### SDI Input and Outputs

BNC connectors are provided on the KONA LHe and LHi card endplates for one SD-SDI or HD-SDI input. The LHe Plus has two, and LHi has one SDI output (format independent of the input). The SDI input and outputs support video and embedded 24-bit digital audio. Use SDI wherever possible for the best quality 10-

bit uncompressed video input, capture and output. If peripheral equipment has a variety of inputs/outputs, look to see if it has SDI I/O, and use it where possible. Most high-end professional broadcast equipment supports SDI (VTRs, cameras, media storage servers, etc.).

---

### 2-Channel Digital AES/EBU Audio Inputs And Outputs

---

One female XLR connector is provided for the channel 1 and 2 inputs, while a male XLR connector carries channel 1 and 2 outputs. AES/EBU signals are handled internally as 24-bit digital. The optional KL-Box also provides XLR audio connections on the front panel.

*NOTE: AES XLR connections are digital and cannot be used with analog equipment having XLR connectors.*

---

### Analog 2-Channel Balanced Audio

---

Two sets of analog XLR connectors, one for each channel, support balanced audio connections. Male XLRs are provided for outputs and female XLRs are provided for inputs. Balanced audio (differential) connections provide better analog audio quality over longer cable runs. Most professional quality VTRs and audio equipment have XLR style connectors for analog audio. Analog audio signals are converted internally to 24-bit digital.

---

### Unbalanced Audio on KL-Box

---

On the KL-Box are two analog output connectors, one for each channel. These connectors are RCA-style phono jacks.

---

### RS-422 Machine Control

---

A female DE-9 connector on the LHi/LHe Plus breakout cable provides connection for VTRs, camcorders, disk media servers, and other devices using RS-422 SMPTE (Sony) protocol. This RS-422 connector is also present on the optional KL-Box (connector pinout is Sony 9-pin protocol).

---

## LHi Only Connectors

---

---

### HDMI Input and Output

---

Two HDMI mini-connectors on the LHi endplate (full-size HDMI connectors on the KLHi-Box) provide for input and output of HDMI compatible video (version 1.1) and multi-channel embedded audio (8 channels). HDCP is not supported on either input or output. The LHi's HDMI output does not have HDCP, and input sources having HDCP are not supported. The HDMI input is designed to support long cable runs—up to 100 ft. when using 22 or 24AWG HDMI cable, or up to 50 ft. using 28 or 30AWG HDMI cable. The HDMI output supports standard HDMI cables only.

# Chapter 2 – Installation

---

## Installation Overview

---

The installation and set up of a KONA card is simple, and may vary slightly depending on your system.

For the most up-to-date Mac system requirements for KONA, see the following AJA website:

<https://www.aja.com/en/support/kona-system-configuration/>

For the most up-to-date Windows system requirements for KONA, see the following AJA website:

<https://www.aja.com/en/support/kona-pc-system-configuration/>

## AJA System Test Application

---

AJA System Test is a utility for measuring system performance with AJA KONA Video Capture cards. It is installed with the KONA Driver. The application includes:

- System Disk Test
- AJA Device Test
- Disk + Device Test
- System Report

The application tests Read and Write, Capture and Playback speeds tests in both Megabytes per second and Frames per second. The disk speed tests differ from standard disk I/O performance applications in that they specifically test the system under conditions typically encountered with video capture, playback, and editing.

We suggest the best test is to fill your storage disk to 80% and then test capture at the highest data rate you will use.

## Unpacking

---

### Shipping Box Contents

---

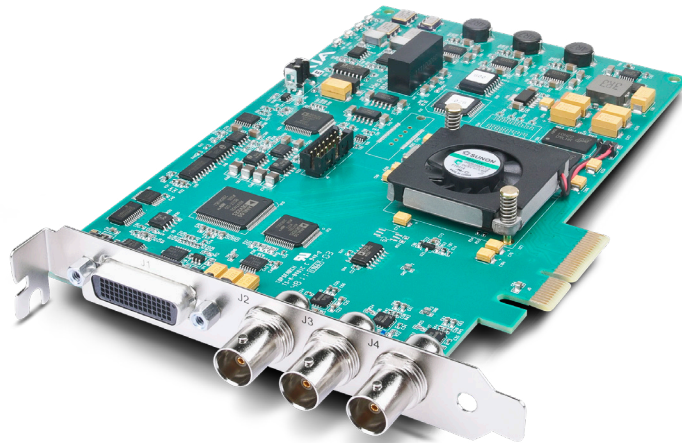
Your KONA shipment includes:

- KONA PCI-Express card
- KONA I/O cables.

# Installing the KONA Card

---

Figure 4. KONA Card (model LHe PLus)



The KONA card can be installed into a PC chassis, legacy Mac Pro chassis with PCIe slots, or into a Thunderbolt PCIe external chassis.

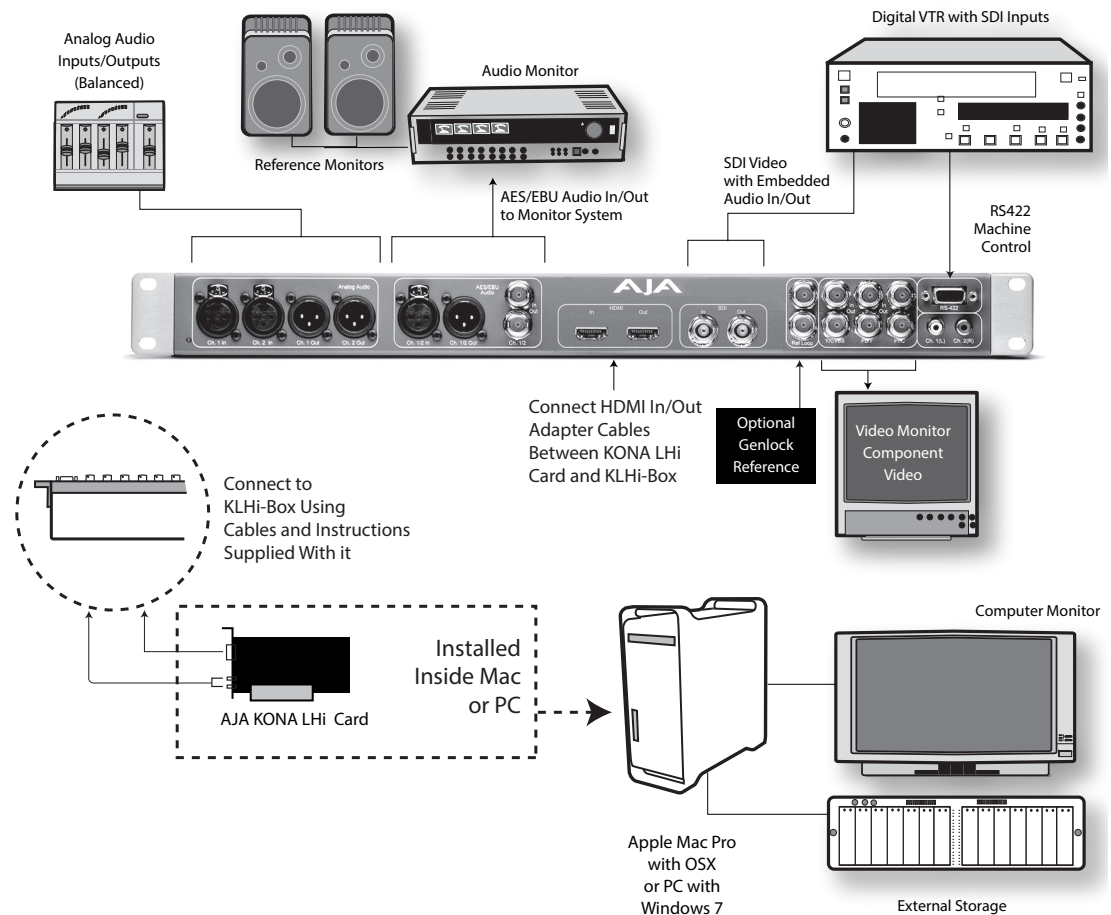
1. Turn off power to the host chassis.
2. Touch the outside of the chassis to discharge any body static.
3. Remove the power cable from the back of the chassis.
4. Open the chassis.
5. Locate a recommended PCIe slot (see the AJA website for slot selection instructions).
6. Remove the backplate and screw from the PCIe slot.
7. Touch the chassis to discharge any body static.
8. Remove the KONA card from its anti-static bag.
9. Carefully insert the card by rocking it slowly into the slot. Ensure the card aligns properly with the slot opening and is fully seated.
10. Replace the screw to secure the card.
11. Close the chassis.
12. Power up the chassis.

*NOTE: Always put a RAID controller and KONA on separate PCIe busses. This improves performance by reducing bus contention.*

# Cabling the System

## KONA LHi Cable Connections

Figure 5. Typical KONA LHi System Shown with Optional KLHi-Box



Also see [Figure 1 on page 10](#) for KONA LH cable connector identification.

## Typical System

[Figure 5 on page 15](#) shows typical system interconnections for a system with digital A/V sources. Your system may differ depending on VTRs, audio monitoring, and video monitoring.

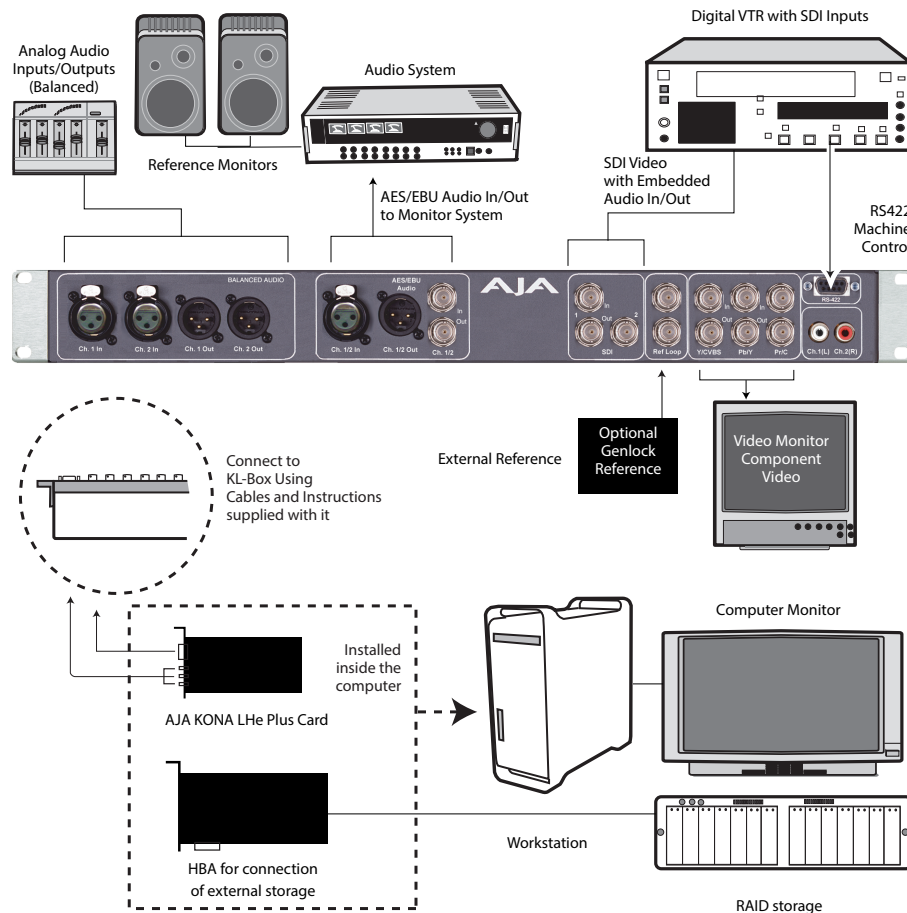
1. If desired, connect your house reference sync to the KONA LHi Ref Loop connector (BNC). The second KONA LHi Ref Loop connector on the KLHi-Box (if used) can be connected to the VTR or terminated with a 75-ohm terminator. If instead using LTC timecode input, connect to the Ref Loop input.
2. Connect an HDMI Video Monitor to the KONA LHi HDMI Out connector. Or instead, use the Component Analog Video Out BNC connectors to go to an analog monitor.
3. Connect a 9-pin DE9 machine control cable between your VTR's RS422 control port and the breakout cable's RS-422 machine control connector.
4. Connect two SDI cables between KONA LHi (BNCs are on the card endplate) and your digital VTR (Digital Betacam etc.), one from KONA LHi SDI In to the

VTR SDI Out, and one from KONA LHi SDI Out to the VTR SDI In. The KONA LHi SDI connections have embedded audio so the VTR must be configured accordingly.

5. If you have an AES/EBU-ready audio monitoring system, then connect the two channels of AES/EBU output from KONA LHi's XLR connectors (channels 1 and 2) to the monitoring system AES/EBU inputs. If you instead have an analog audio monitoring system, you can use either the XLR balanced audio connectors or the two RCA-style unbalanced stereo output jacks on the Optional KLHi-Box for output.

## KONA LHe Plus Cable Connections

Figure 6. Typical LHe Plus System Shown with Optional KL-Box



See [Figure 1 on page 10](#) for KONA LH cable connector identification.

## Typical System

[Figure 6 on page 16](#) shows typical system interconnections for KONA LHe Plus with digital A/V sources. Your system may differ depending on VTRs, audio monitoring, and video monitoring.

1. If desired, connect your house reference sync to the KONA LHe Plus Ref Loop connector (BNC). The second KONA Ref Loop connector on the KL-Box (if used) can be connected to the VTR or terminated with a 75-ohm terminator.
2. Connect a Video Monitor to the KONA LHe Plus Component Analog Video Out BNC connectors (preferred), or instead connect to a composite monitor.



3. Connect a 9-pin DE9 machine control cable between your VTR's RS422 control port and the breakout cable's RS-422 machine control connector.
4. Connect two SDI cables between the KONA card (BNCs are on the card endplate) and your digital VTR (Digital Betacam etc.), one from KONA card's SDI In to the VTR SDI Out, and one from card's SDI Out (1 or 2) to the VTR SDI In. The KONA LHe Plus SDI connections have embedded audio so the VTR must be configured accordingly.
5. If you have an AES/EBU-ready audio monitoring system, connect the two channels of AES/EBU output from KONA's XLR connectors (channels 1 and 2) to the monitoring system AES/EBU inputs. If, instead, you have an analog audio monitoring system, you can use either the XLR balanced audio connectors or the two RCA-style unbalanced stereo output jacks on the Optional KL-Box for output.

## Installing KONA LH Software

---

*NOTE: Always uninstall previous versions of KONA software before updating your software.*

### Download

---

Go to the AJA website and download the latest KONA LH driver software containing the AJA Control Panel application:

<https://www.aja.com/en/support/downloads/>

System software updates may occasionally become available to AJA KONA LH owners on our website (www.aja.com). We recommend checking occasionally for both software updates and additional product information.

*NOTE: If your computer has previously had another video capture or multimedia device installed, ensure you uninstall any related software before installing KONA LH. This will prevent any hardware or software conflicts.*

### Software Package Installation and Re-installation

---

Before installing the KONA LH software package, ensure that your capture/editing application is installed as detailed in its user documentation. You cannot use KONA LH with a third-party application until the application has been installed and run at least once on your workstation. Next, install the AJA software package.

If you add KONA LH supported applications at a later date and have not previously installed the appropriate drivers, you must run the install program again selecting the appropriate application support software to be installed.

### Firmware Update Procedure

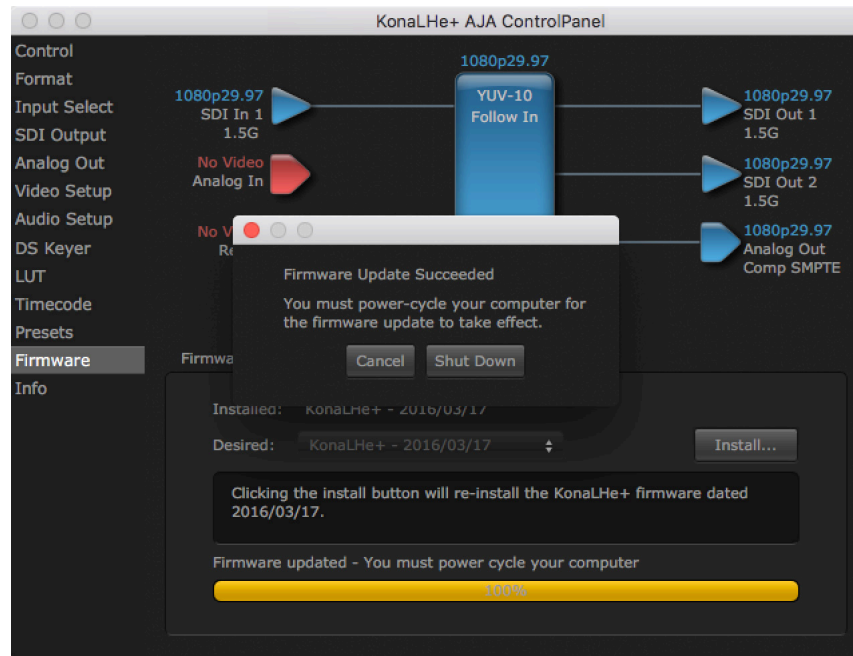
---

After the AJA Software Package has been installed on a computer with your AJA hardware installed, the firmware on that AJA device can be updated if a newer version of firmware is included with that software package.

1. Open the AJA Control Panel application.
2. If more than one AJA device is connected, choose the device you want to update by selecting its name from the drop-down menu at the top of the screen.
3. Go to the Control Panel Firmware Screen.

4. Select the firmware version (if multiple versions exist) in the Desired dropdown.
5. Click on Install. Messages appear and when finished, firmware update completed messages are shown ([Figure 7](#)).

*Figure 7. Update Completed Messages*



6. Click Shutdown to power down the computer.
7. Restart the computer.
8. Open AJA Control Panel. The AJA hardware with the updated firmware should be recognized by the Control Panel application.

# Chapter 3 – Operation

---



## Using KONA with Professional Video /Audio Software

---

After you install the AJA software package on your computer, you're ready to begin capturing and playing back video and audio using your choice of third-party software. You can go here for AJA software and documentation:

<https://www.aja.com/en/support/downloads/>

For further support information and downloads for third-party software and DirectShow for Developers, go to:

<https://www.aja.com/en/category/edit/compatibility>

## Capture Formats

---

When capturing, you can record data in the following file formats:

- BMP
- DPX
- MOV (QuickTime)

*NOTE: Support by KONA of QuickTime for Windows has been discontinued.*

- MXF
- TGA

*NOTE: Other file types can be captured using third-party capture applications such as Sienna, Softron, Tools on Air, Drastic, or Quadrus.*

## AJA Control Panel Overview

---

The AJA Control Panel is a software application that provides a simple visual showing how the KONA hardware is currently configured and allows you to make changes. You can change signal input and output parameters and define the video processing that will be performed.

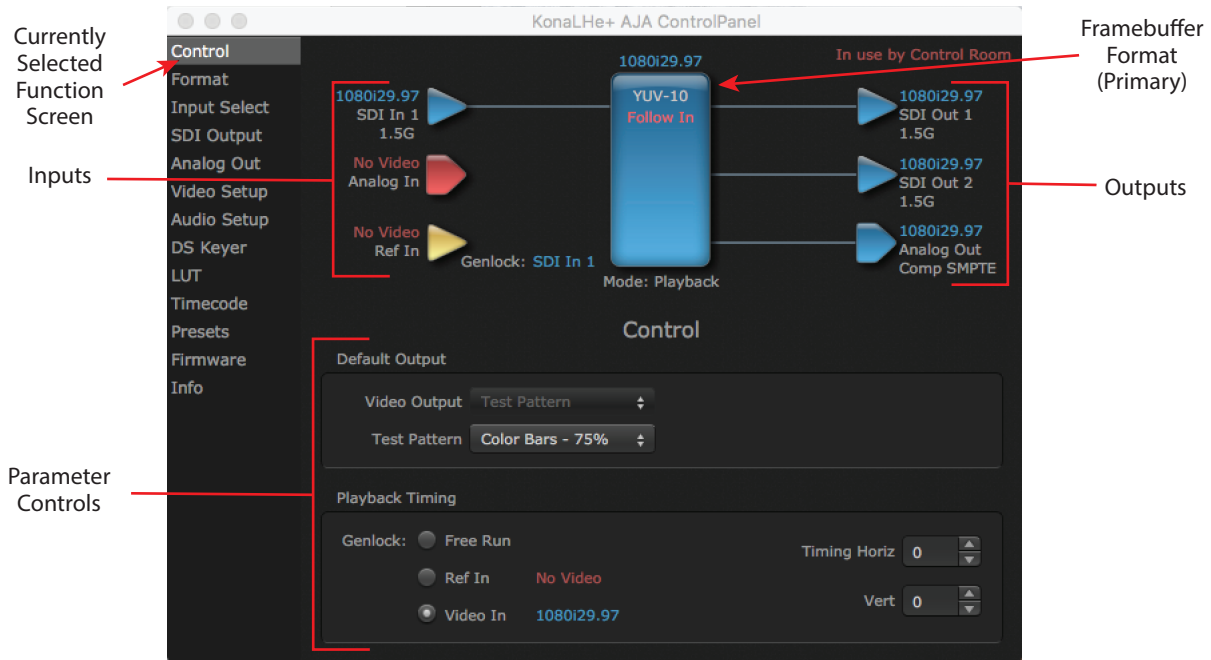
The AJA software installer automatically installs the Control Panel application on your computer.

# AJA Control Panel User Interface

The AJA Control Panel user interface includes a visual block diagram of the unit's current configuration. The current status, input and output settings, and many other details are depicted in the color-coded block diagram. Below this block diagram are various controls for changing operating parameters, which will vary depending on which function screen has been selected.

The left side of the AJA Control Panel provides a navigation list of available function screens. Clicking on a link (or alternatively, a related element in the block diagram) displays a function screen corresponding to that topic.

Figure 8. AJA Control Panel, Block Diagram and Controls

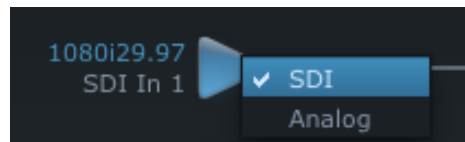


## Block Diagram Area

The top block diagram area of the Control Panel screen is a visual representation of the processing, if any, that's currently occurring, including inputs/outputs, reference source, and system status. Lines between inputs, the framebuffer, and outputs, show a video path. Where there are no lines, there is no connection; this can be because an input or output isn't selected in the Input Select menu. The lines will also show whether the outputs are video or video + key.

You can click any of the function screen selection links in the left column to view its current settings or click on an icon to call up its related settings screen. You can also right-click or Control-click to see context-sensitive information and choices.

Figure 9. Context Sensitive Menu



## Color Meanings

All items in the AJA Control Panel block diagram are color-coded to show what is happening in real time. This applies to both icons and text. These colors indicate:

Blue

---

Video is same format as the Primary Format (framebuffer)

Green

---

Indicates that KONA is performing an active change to the video making it different from the Primary Format (e.g., down-conversion).

Yellow

---

Reference video (black burst or other reference source)

Red

---

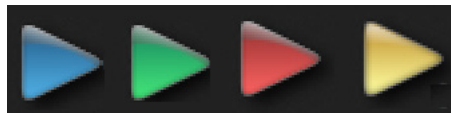
The selected operation cannot be performed

## Input/Output Icons

---

The input and output icons are triangles that together with their color show all the input and outputs and their status (selected, not selected, input present or not, format, etc.). A complete video path is shown when inputs and outputs are connected with lines going to/from the framebuffer.

*Figure 10. Input/Output Icons*



## Framebuffer

---

The framebuffer is the “engine” where your third-party applications interface with the AJA device. The framebuffer has a format (called the “Primary Format”) and color space that it follows, as defined in the linked menu screens or via external application software. The “Secondary Format” is a selection for format conversion.

## Primary Format

---

The Primary Format is the media format written to disk and used in your project. This is the format that the framebuffer will use and is shown in the Control Panel using the color blue. It is the format that the third-party application software will either receive from the AJA hardware, or is sending to the hardware. All icons in blue are the same as the Primary Format used by the framebuffer. Also any text descriptions in the block diagram that appear in blue indicate that something is in the primary format. For example:

- If the input and output icons are blue, you know that the same format is used throughout the video path. No format conversion is being performed.
- If the input or output icon colors differ (blue input and green output icons for example), you know that a format conversion is being performed.

## Secondary Format

---

Any format other than the currently selected Primary Format, is a secondary format. As described previously, this means that either the Inputs or Outputs are somehow different from the framebuffer’s assigned format—the Primary Format. A conversion is readily apparent because of the color change from blue.

In some cases the application you use with the KONA will automatically set the Primary Format, overriding the user's selected primary format in the AJA Control Panel.

## Conversion Icons

When an input or output is a different standard than the framebuffer, the KONA may be up- down- or cross-converting the signal to the selected standard. This may be automatic, because it's detected an input signal that differs from the standard currently selected, or because you've explicitly told it to convert. In either case, the block diagram will show the conversion by displaying a conversion icon in between the input/output and the framebuffer.

Figure 11. Up, Down, and Cross-convert Icons



## Controlling Application

It is important to understand that the computer can contain many applications that can use the AJA device (as you switch from window to window) and it may not always be obvious which currently controls it.

Figure 12. Control Panel In Use Message (in red)



In the top right corner, the Control Panel displays the name of the application controlling the unit. In some cases, applications may not always properly "let go" of the I/O interface as another takes over—you'll be able to tell by looking at the Control Panel.

## Presets

Setups can be named and saved as a snapshot (Preset) for recall at any time. You can save various AJA device Control Panel configurations associated with your frequent tasks. You don't have to spend time resetting interface configurations, just load the previously saved Preset for each task. See "[Saving, Loading and Deleting Presets](#)" on page 42 for more information.

If you work on multiple systems and want to carry your saved setups to another location, you can copy your saved Preset files on to movable storage and load them into any computer running the AJA Control Panel application.

### Mac OS Preset Files Storage Location

- From the Finder, hold down the Option key (to display the Library directory) and click on Go/Library/Application Support/AJA/<device name>/Presets/

### Windows Preset Files Storage Location

- c:\Users\<username>\AppData\Local\AJA\Control Panel\<device name> Presets\

## Default Preferences

---

When an AJA device starts up, a preference can determine what settings it will have it when it begins to operate. The AJA Control Panel offers two default preference settings:

- Local Preference - A preference stored from the last AJA device's Control Panel settings to be used on next startup of AJA Control Panel. This occurs on next restoration of the default state (triggered by start up of host CPU, startup of the AJA device, or when a third-party application releases the AJA device).
- Global Preference - A preference saved for use as a global default start state for an AJA device that can be shared by multiple users, applied on first startup, or by pressing the Control Panel **Reset Device...** button.

### Local Preference

---

The Local Preference file (com.aja.devicesettings) exists to immediately and automatically store all parameter changes made by a user on a particular AJA device. When any control is changed in the Control Panel, that change is recorded in the Local Preference file stored in a unique location on that computer that is dedicated to that particular device, serial number, and logged-in user. Then, when AJA Control Panel is restarted for any reason, the AJA device being controlled restores the settings being used when Control Panel was last closed.

The Local Preference file can be accessed at the following locations.

On Mac:

- From the Finder, hold down the Option key (to display the Library directory) and click on Go/Library/Preferences/com.aja.devicesettings.

On Windows:

- C:\Users\<USER\_NAME>\AppData\Local\aja\com.aja.devicesettings

*NOTE: Clicking on the AJA Control Panel "Erase All Prefs" button deletes the existing Local Preference file from this location. This file will be recreated as soon as any Control Panel setting is changed.*

*NOTE: Clicking on the AJA Control Panel "Reset Device..." button will delete the existing Local Preference file. If a Global Preference file is found, these settings are reloaded. If a Global Preference file is not found, "factory defaults" are loaded and the device is set to that state*

### Global Preference

---

An administrator can establish a house standard for an AJA device by copying a preference file to a shared computer location. Once placed at that location, it becomes a Global Preference file where it will establish a standard default startup state for all users of that AJA device using that computer system. These settings preempt the initial AJA factory default settings, and are applied when an AJA device is first powered up, or when the Control Panel **Reset Device** button is pressed.

To establish a Global Preference, the administrator first configures the AJA device (which automatically creates a "com.aja.devicesettings" Local Preference file in the location identified above) and then copy or move or that file to the correct computer locations (manually or by pushing it out across the network) on all the computers that use the AJA device.

*NOTE: If the user makes changes to an AJA Device's Control Panel settings, those changes are saved to the Local Preference file, which will take priority over the Global Preference file.*

The shared computer locations for a Global Preference file are:

On Mac:

- From the Finder, click on Go/Computer/<System HD>/Users/Shared/AJA/ and copy or move the "com.aja.devicesettings file" described above to this location.

*NOTE: The "AJA" folder needs to be created manually at this location before moving the preference file into it.*

On Windows there are three possible shared locations depending on your system:

- C:\Users\Public\Aja\
- C:\Users\All Users\Aja\
- C:\ProgramData\Aja\

Copy or move the "com.aja.devicesettings file" described above to one of these locations.

*NOTE: The AJA Control Panel Info screen displays the path to the Global Preference file on that computer.*

*NOTE: Clicking on the AJA Control Panel Erase All Prefs button does NOT delete an existing Global Preference file from this location.*

## Function Screens

---

Listed below are the function screens for KONA and what they are used for.

*Table 1. KONA Function Screens*

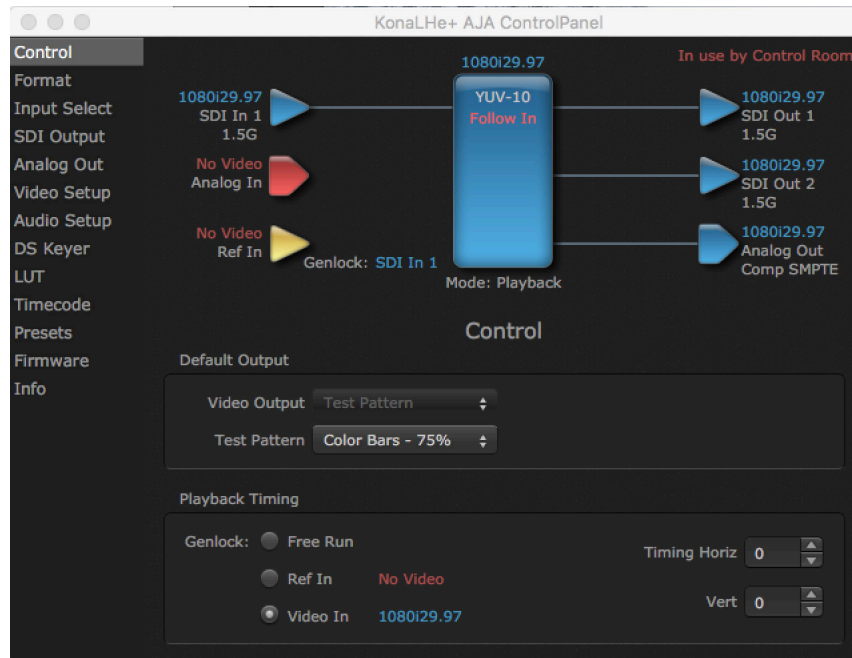
<b>Screen</b>	<b>Functions</b>
Control	Configure some basic KONA operation options and output timing.
Format	Select the framebuffer primary video format and any secondary formats for conversion of inputs/outputs
Input Select	View and edit input selections and audio mapping.
SDI Output	Select output format.
HDMI	Configure the HDMI I/O (not LHe Plus)
Analog Out	Configure the component format and audio monitor setup.
Video Setup	Configure Video such as composite black level, progressive format and ancillary data (Closed Caption) option.
Audio Setup	Configures Audio options such as analog audio monitor level.
DS Keyer	Setup and control the insertion of keyed video from the frame buffer or graphics files with alpha channel.
LUT	Load a lookup table (LUT) file to adjust the calibration of color for any source.
Timecode	Monitors SMPTE 12M-2 timecode and configure timecode window burn output.
Presets	Add or delete saved preset configurations (handy for quick and easy recall of different KONA LH settings for varied workflows).
Firmware	Install firmware from your currently installed AJA software package.
Info	Display status information and the firmware version number. This information is generally intended for troubleshooting/support.



# Control Panel Operation

## Control Screen

Figure 13. AJA Control Panel, Control Screen



The KONA card can be controlled by various software applications running on a host computer. The Control screen is where you select how the KONA directs video and is used by application software. This screen also provides control for configuring output timing with regard to external reference video and horizontal/vertical delay. The top of the Control Screen shows the currently selected AJA device if more than one is available in your system.

## Default Output

This is where you select what the KONA card will output as a default when no application has control of the board, such as when the Mac Finder or Windows Navigation Pane is active. Since KONA can be controlled by software applications as well as its own control panel, the output can change dynamically. When you select many video applications, they will take control of the KONA inputs and outputs. However, when an application that doesn't take control is active, these settings determine what KONA will output.

## Input Passthrough

This selection directs KONA to route video from its selected input through the card for processing and output. When this selection is chosen, all Primary/Secondary Format selections are available for selection in controlling the output. This in effect makes the KONA card a converter. No applications other than the AJA Control Panel need be open to convert audio and video from one format to another. For example, if you need to dub an SD source tape needs to be HD, the signal can be routed from the SD VTR to the KONA card configured for up-conversion in the AJA Control Panel and then passed through to the HD VTR for recording. (Note: LHe Plus performs down-conversion only.)

## Test Pattern

---

This selection directs the KONA card to output a choice of preset pattern when no other application is using the KONA card. You can choose from:

Black, Color bars (75% or 100%), Ramp, Multiburst, Line Sweep, Multi Pattern, or Flat Field.

In addition to the preset test pattern choices, a "Load File..." selection at the bottom of the menu allows you to load any standard RGB graphics file (.tif, .psd, etc.) into the frame buffer for display.

While in Test Pattern mode, you can select RGB or YUV output via a pulldown menu.

*NOTE: The graphic file will not be scaled to fit. If it's smaller than the current frame buffer format, KONA will center it in the frame. If it's larger than the current frame buffer format, it will be cropped on the right and bottom. Also some graphics formats and bit depths may not be supported. Once a graphic file is loaded into the frame buffer it will be retained until it is overwritten by another graphic or test pattern, or when power is turned off. Graphic file names are only "remembered" in the menu until the AJA Control Panel application closed.*

## Hold Last App

---

This selection directs KONA to hold and output the last frame of video from the last application to control KONA. This can be helpful when operating in an environment where you're switching back and forth between multiple application windows.

## Playback Timing

---

Use these controls to set Genlock and Timing adjustment.

### Genlock

---

Selects how KONA will synchronize program video:

- Freerun: In this mode, KONA generates sync without an external reference source
- Ref In: Directs KONA to use the Ref Video source for sync (usually an analog black burst video signal)
- Video In: Directs KONA to use whichever video input source has been selected in the Inputs Screen for sync

### Timing (Horiz and Vert):

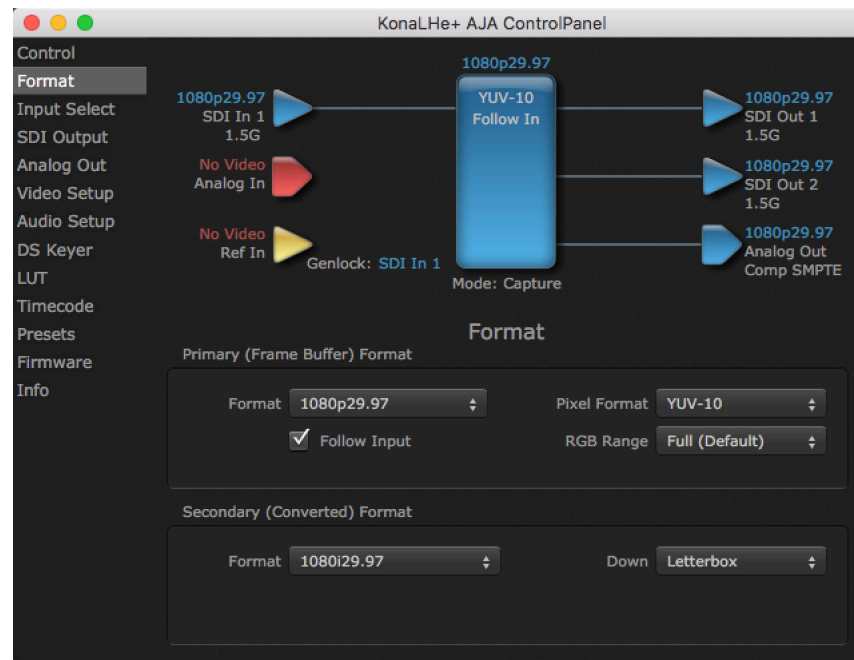
---

These two pull-downs allow output timing adjustment with reference to the Ref Video source selected:

- Horizontal selects a number of pixels (clocks) to offset
- Vertical specifies a number of lines to offset

## Format Screen

Figure 14. AJA Control Panel, Format Screen



The Format Screen shows the video format currently in use by the KONA framebuffer (called the Primary Format) and allows you to change it. All throughout the Control Panel, choices are always presented based on what KONA can do with the signals available and the inputs/outputs selected. For example, on the Format screen, if the output or inputs are a different format than the primary, then you'll see an additional information pane that allows you to view and edit the secondary format—including control over whether up/down/cross conversion is employed.

### Video Format (Primary and Secondary)

These pull-down menus show the currently selected formats. If you select an alternate value in the Primary Format using the pull-down, it will change the format used by KONA's framebuffer.

When a change is made via the Video Format pull-down or by clicking an icon and selecting a new format via a contextual menu, the block diagram will change to reflect the new format. In the case of a Secondary Format, the formats available can vary based on what the Primary Format is and the input signal (frame rates of input sources limits the to/from conversion choices).

The "Secondary Video Format" pull-down menu lists all compatible formats for selection (incompatible formats are not shown). This allows you to see what you've chosen, and also see those formats that are compatible with the selected Primary format.

#### Pixel Format

Use this pulldown menu to choose: YUV-10, YUV-8, RGB-10, or ARGB-8 or RGB-12.

#### RGB Range

The RGB Range pulldown menu allows you to select either Full-range (0-1023) or SMPTE range (typically 64-940) for RGB color output.

*NOTE: The AJA Control Panel software uses the abbreviation “sf” instead of “PsF” when referring to “progressive segmented frame” formats. In the manual and in other literature you may see either of these acronyms used interchangeably. Visually, it is easier to recognize:*

- “sf” for progressively segmented frame formats
- “p” for progressive frame formats

---

## Follow Input

Enabling the Follow Input checkbox allows the Control Panel Buffer to auto-switch to whatever is the detected input format. This feature works only if the controlling application supports input-based capture—AJA Control Room for example.

---

## Format Conversions

---

### Cross-Conversion

If you have an HD format as your primary and then select a secondary HD format with a different frame size, KONA will perform a cross-conversion where necessary (input or output) for “like Hz” formats. “Like Hz” means that 720P 59.94 may be converted to 1080i 29.97 (59.94Hz). The example below shows 1080i to 720p.

---

### Up Conversion

The Up and Down pull-down menus are available when conversion has been selected for the video path to/from the framebuffer and like Hz formats are selected (the one exception is 1080PsF 23.98 which can be down-converted to 525i 29.97.) Different choices will be available depending on the type of conversion and formats being converted. SD to SD conversions are essentially aspect ratio conversions to accommodate transforming anamorphic images to letterbox or vice versa.

For up-conversion the following choices are available:

- Anamorphic: full-screen “stretched” image
- Pillar box 4:3: results in a 4:3 image in center of screen with black sidebars
- Zoom 14:9: results in a 4:3 image zoomed slightly to fill a 14:9 image with black sidebars
- Zoom Letterbox: results in image zoomed to fill full screen
- Zoom Wide: results in a combination of zoom and horizontal stretch to fill a 16:9 screen; this setting can introduce a small aspect ratio change

---

### Down Conversion

For down-conversion the following choices are available:

- Letterbox: image is reduced with black top and bottom added to image area with the aspect ratio preserved
- Crop: image is cropped to fit new screen size
- Anamorphic: full-screen “stretched” image

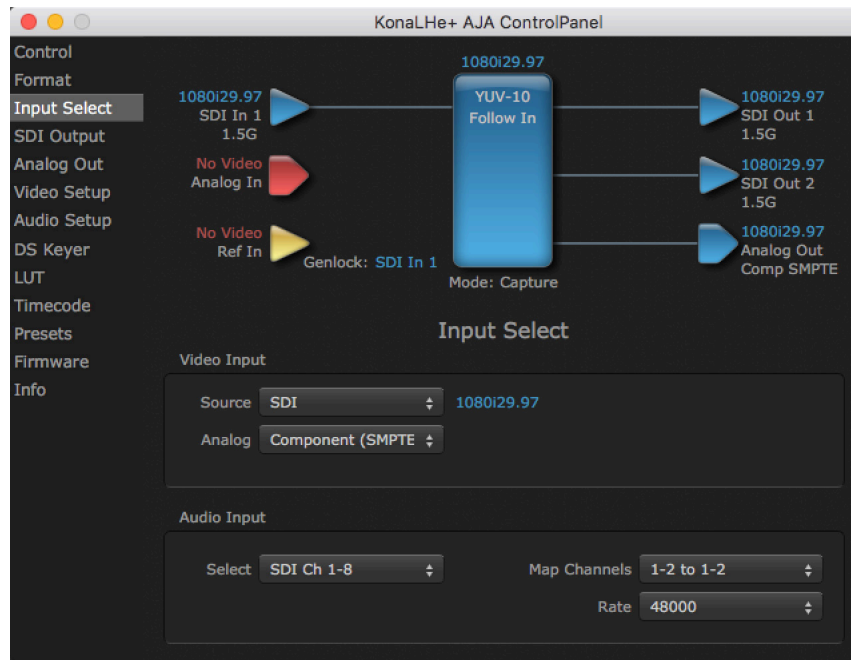
## SD to SD

This pulldown is for SD to SD aspect ratio conversion.

- Letterbox: this transforms SD anamorphic material to a letterboxed image
- H Crop: will produce a horizontally stretched effect on the image; transforms anamorphic SD to full frame SD
- Pillarbox: will produce an image in the center of the screen with black borders on the left and right sides and an anamorphized image in the center
- V Crop: will transform SD letterbox material to an anamorphic image

## Input Select Screen

Figure 15. AJA Control Panel, Input Select Screen



On the Input Select Screen, you can view the currently selected video and audio input sources and map audio sources to the channels supported by your editing application. Two information panes in the screen are provided: Video Input and Audio Input.

## Video Input

### Source

The pulldown menu allows you to see and change the currently selected video format that KONA has detected (if any). In the example shown above, video is selected at the SDI1 input and the format is 1080i with a frame rate of 29,97. Since this text is shown in blue, you can tell that it matches the framebuffer's primary format selected in the "Formats" screen. By looking at the input source, you can determine how the primary format should likely be set (unless you want to perform a conversion on the input). If you wish to select a different input, use the pulldown to select either SDI 1, 2, or Dual Link for two-wire 4:4:4 RGB, or Stereo 3D. For 3G single-link, choose the SDI Source used and select Stereo 3D from the SDI pulldown menu.

### SDI

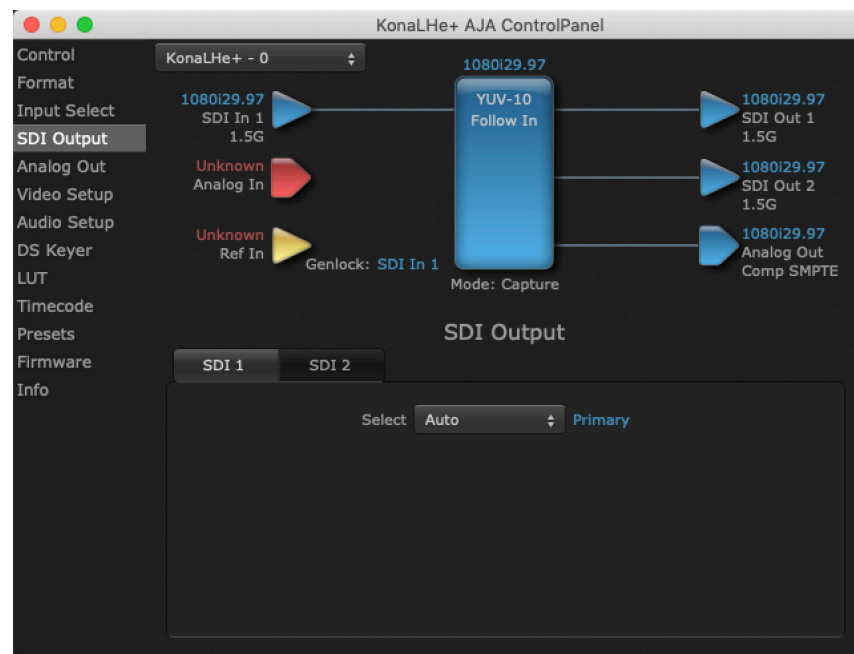
Select from YUV, RGB-SMPTE, RGB-Full, or Stereo 3D.

## Audio Input

This pulldown menu allows you to pick where the audio comes from. KONA supports up to 8 channels of embedded audio. You can choose from the 16 channels embedded in the SDI, which 8 to bring in (1-8 or 9-16). Here, if only two channels were selected in the third-party application you are using, you can select which two channels from the eight embedded will be mapped to that application.

## SDI Output Screen

Figure 16. AJA Control Panel, SDI Output Screen



The SDI Out Screen shows the current settings for the SDI output(s). Because the outputs can be configured independently, one output may be the Primary format and the other output may be the Secondary format. If an input/output has no video, it will be indicated on the block diagram ("No Video").

## Select SDI Output 1

### Auto

Automatically selects the output format, based on the input or selected format.

### Primary

When selected, this indicates that the SDI output is set to the same format as the framebuffer. That value will be listed in blue.

### Secondary

When selected, this indicates that the SDI output is set to a format different from the framebuffer (Primary Format). That secondary format value will be listed in green. This shows that active processing of the video is taking place (format change and possibly up- or down-conversion).

## Video+Key

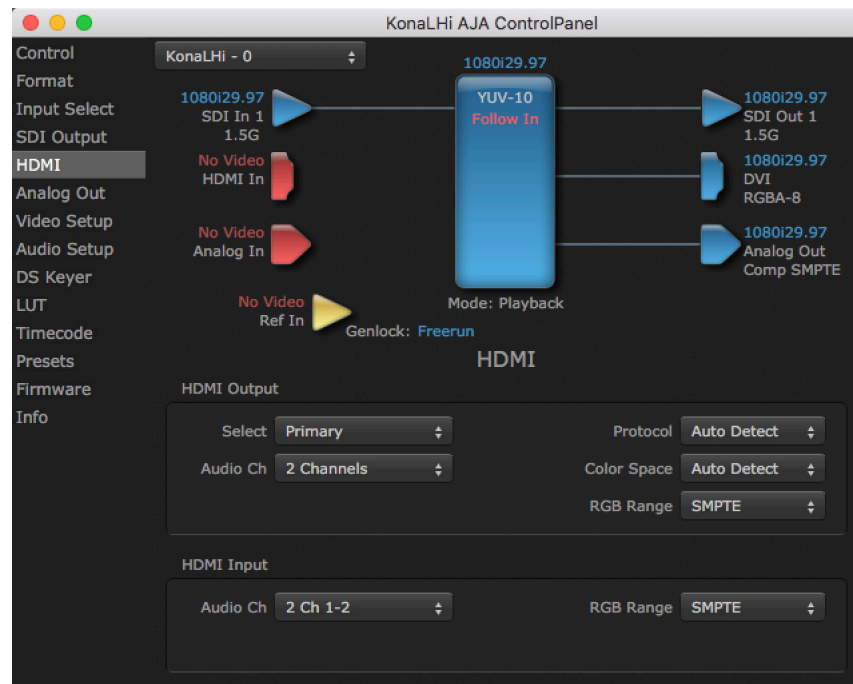
(KONA LHe Plus only) When selected, this indicates that the SDI Out 1 video is set to the same format as the framebuffer. SDI Out 2 is set to an associated video key signal (the shape to be cut out from the video - this will appear as a black and white image/matte). Using the second KONA output as an Alpha Channel key, with the video output, may be useful for feeding production switchers, DVEs or other professional video equipment.

## Select SDI Output 2

(KONA LHe Plus only) Same as SDI Output 1.

## HDMI Screen (LHi Only)

Figure 17. AJA Control Panel, HDMI Screen



## Select HDMI Output

The Select pulldown menu allows you to select either the primary video format (framebuffer) or a secondary one (up/down/cross-conversion).

## Stereo 3D

A pulldown menu for 3D output allows you to select either Side-by-Side or Top-Bottom (Stacked) output of left-eye and right-eye signals.

**NOTE:** This selection must agree with format selection in the third-party CineForm Codec (NOT included).

## Audio Ch

This pulldown allows you to select the number of embedded audio channels for the HDMI output. Two or eight channels can be chosen.

## Protocol

---

The Protocol pulldown allows you to choose Auto Detect, HDMI or DVI protocol—use DVI if you're outputting to a DVI monitor using an HDMI to DVI adapter.

## Color Space

---

Selects the HDMI output color space and depth. These are the choices:

- Auto Detect—Automatically selects the mode based on getting the attached HDMI device's EDID information. This is the recommended setting. The selected mode is shown to the right of the pull-down control.
- RGB 8Bit—Uses 8-bit RGB mode regardless of the attached device's EDID.
- RGB 10Bit—Uses 10-bit RGB mode regardless of the attached device's EDID.
- YCbCr 10Bit—Uses 10-bit YCbCr mode regardless of the attached device's EDID.

## RGB Range

---

The RGB Range pulldown menu allows you to select the type of RGB color output.

- SMPTE— (typically 64-940)
- Full—(0-1023)

## KONA LHi HDMI Input Settings

---

### RGB Range

---

The detected HDMI input video format is displayed and you're given pull-down menus to configure the RGB range (SMPTE or FULL) as above.

### Audio Ch

---

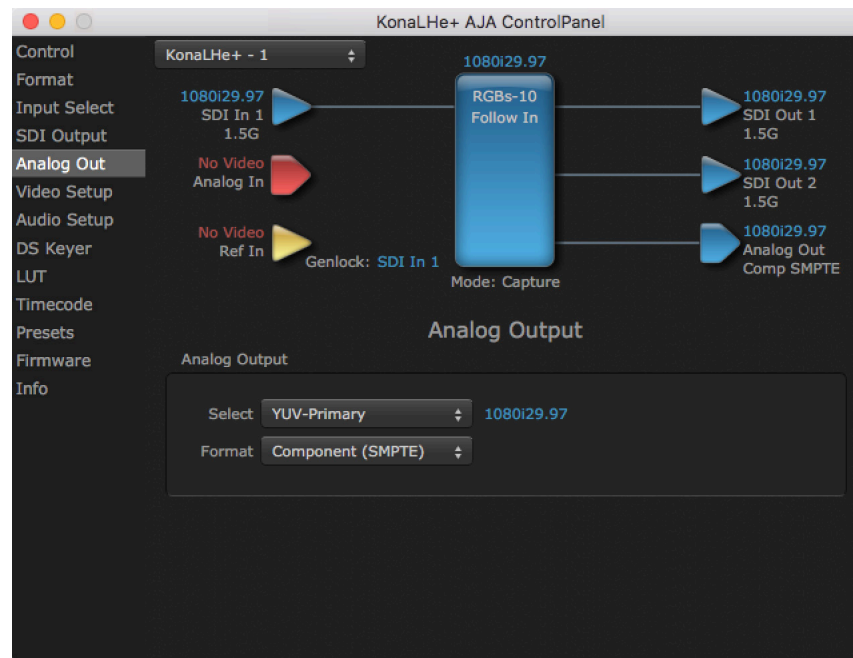
You can select any two embedded channel pairs from those supplied for stereo output (if applicable). Select from:

- 2 Ch 1-2 through 7-8
- 8 Ch 1-8



# Analog Out Screen

Figure 18. AJA Control Panel, Analog Out Screen



KONA provides a high-quality analog component or composite + Y/C output, generally used for monitoring. This screen shows the current settings for that analog output, and allows you to re-configure it when desired (format and black-level).

## Select Analog Output

Select Primary or Secondary (any conversion applied) for the analog output; if a conversion is applied, you'll see the conversion icon appear on the block diagram.

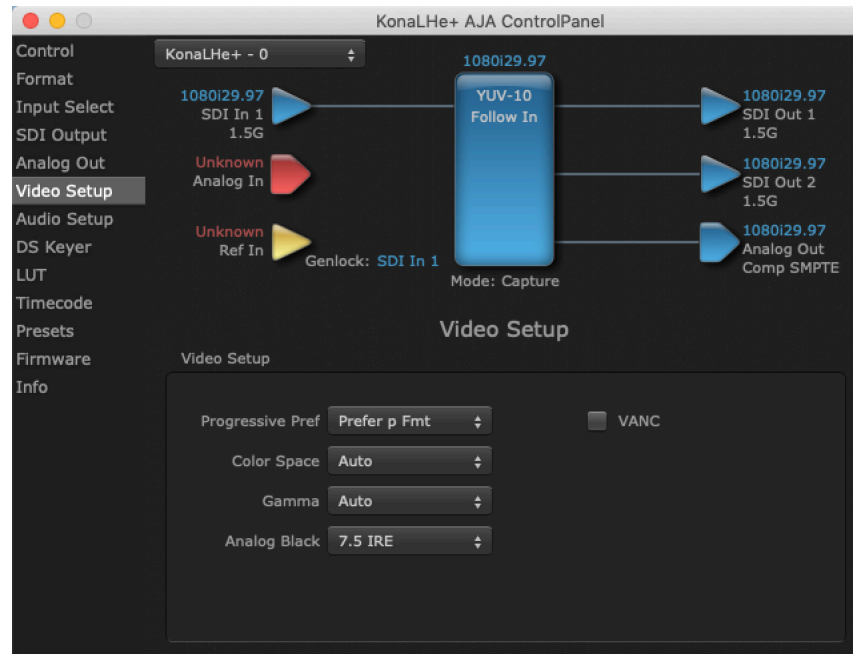
## Format

Select the video format from the Format pulldown.

- Composite + Y/C
- Component (SMPTE)
- Component (Beta)
- Component (RGB)

## Video Setup Screen

Figure 19. AJA Control Panel, Video Setup Screen



The Video Setup screen shows various other settings which will affect how video inputs and outputs behave, and how KONA interacts with some software applications.

## Video Setup

### Progressive Pref

Radio buttons allow you to choose between PsF (progressive segmented frames) and p (progressive frames) non-interlaced output. This feature is used to default the hardware to use either p or PsF output over SDI when it has not been specified by the application.

### Analog Black Level

Choices available for Black Level are the two Composite analog formats. Choices presented are for US or Japan:

- 7.5 IRE (NTSC US)
- 0 IRE (NTSC Japan)

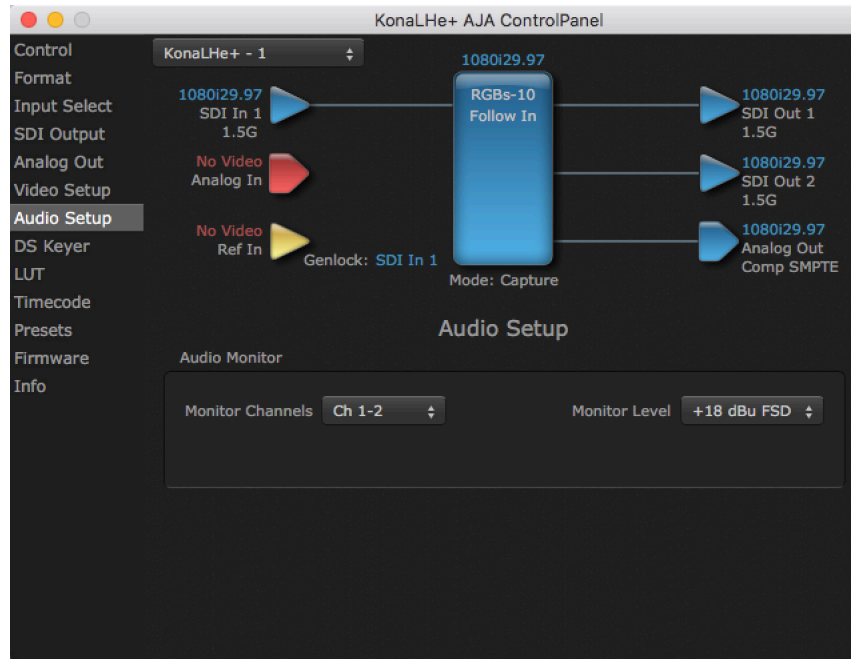
### VANC Checkbox

When checked ON, the VANC checkbox tells the KONA card to capture and process any ancillary data in the SDI stream. This can include Closed Captioning data, and other types of metadata. Applications such as Premiere Pro and Final Cut Pro will not capture or output this data through the KONA, if this box is not checked on.

## Audio Setup Screen

The Audio Setup Screen shows the current settings for the analog audio output, allowing you to re-configure it when desired. Different screens are displayed depending on the KONA product.

Figure 20. AJA Control Panel, Audio Setup Screen



## Audio Monitor

### Monitor Channels

Use the drop-down menu to select which two audio channels to monitor. Select from Ch 1-2 through Ch 7-8.

*NOTE: This setting only applies to dual channel monitoring environments.*

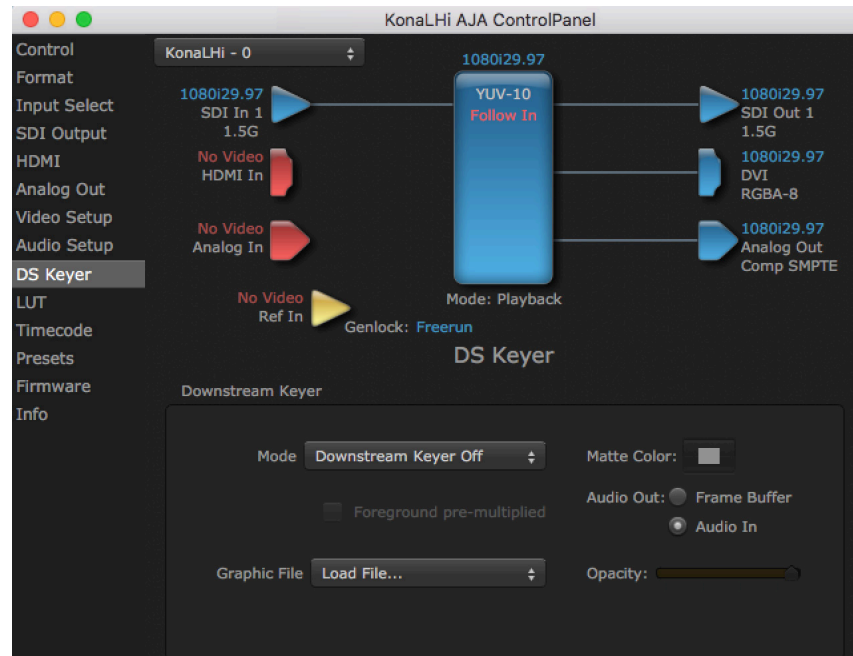
### Monitor Level

Allows adjustment of the analog monitor level, to match the audio to your operating levels. Select from:

- +24 dBu FSD
- +18 dBu FSD (default)
- +15 dBu FSD
- +12 dBu FSD

# Downstream Keyer Screen

Figure 21. AJA Control Panel, DS Keyer Screen



KONA cards have a hardware-based downstream keyer that is ideal for putting logos, “bugs” or other video material with an alpha channel on top of video being played out or printed to tape. A typical application would be putting a television station’s call letters or channel over program video content. Keyed video can be from the KONA’s internal Frame Buffer (from storage, video In, KONA TV, etc.) or from a graphics file that has an alpha channel (PhotoShop etc.).

Settings in the DS Keyer Screen provide control over how the keyer operates and whether it’s turned on or off.

*NOTE: Different controls are available, depending on KONA LH model. For example, Graphic capabilities are available on KONA LH*i*, but not on KONA LH*e* plus.*

## Downstream Keyer Mode

### Downstream Keyer Off

When this pulldown menu item is selected the downstream keyer will be turned off.

### Frame Buffer over Matte

Places the keyed video with alpha channel currently in the Frame Buffer over a fixed color matte determined by the “Matte Color” setting set separately.

### Frame Buffer over Video In

Places the keyed video currently in the Frame Buffer over the video input for playback or print-to-tape.

### Graphic over Matte

Places a graphics file having an alpha channel (chosen in “Graphic File” pulldown) over a fixed color matte determined by the “Matte Color” setting set separately.

## Graphic over Video In

---

Places a graphics file having an alpha channel (chosen in “Graphic File” pulldown) over the video input for playout or print-to-tape.

## Graphic over Frame Buffer

---

Places a graphics file having an alpha channel (chosen in “Graphic File” pulldown) over the current contents of the KONA card’s Frame Buffer (which might be from storage, video In, KONA TV, etc.).

## Matte Color

---

Only available when a Matte setting is selected above, pressing this button brings up a color selection dialog. The dialog provides a variety of ways to select a matte color including a color wheel, color picker (choose from a location anywhere on the computer screen), numeric sliders, swatches, “crayons”, and spectrums. The matte chosen will be used as a video background under the keyed video.

## Foreground pre-multiplied (checkbox)

---

Use to avoid “matte lines” and improve the appearance of the foreground (key) being composited over the background.

## Audio Out

---

### Frame Buffer

---

Select audio out to be routed from the contents of the Frame Buffer.

### Audio In

---

Select audio out to be routed from KONA’s currently selected input(s).

## Opacity

---

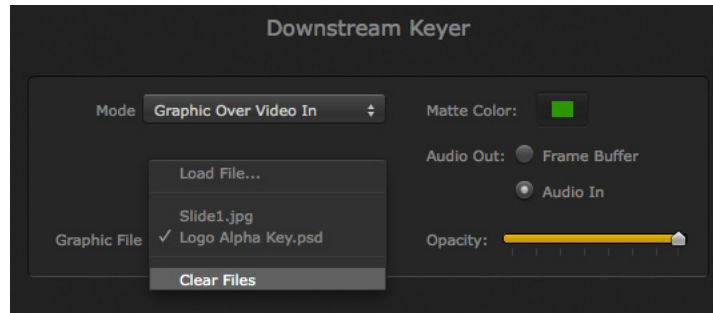
This slider controls the transparency of the keyed video (over the background) from translucent to completely opaque.

## Graphic File Load (LHi Only)

---

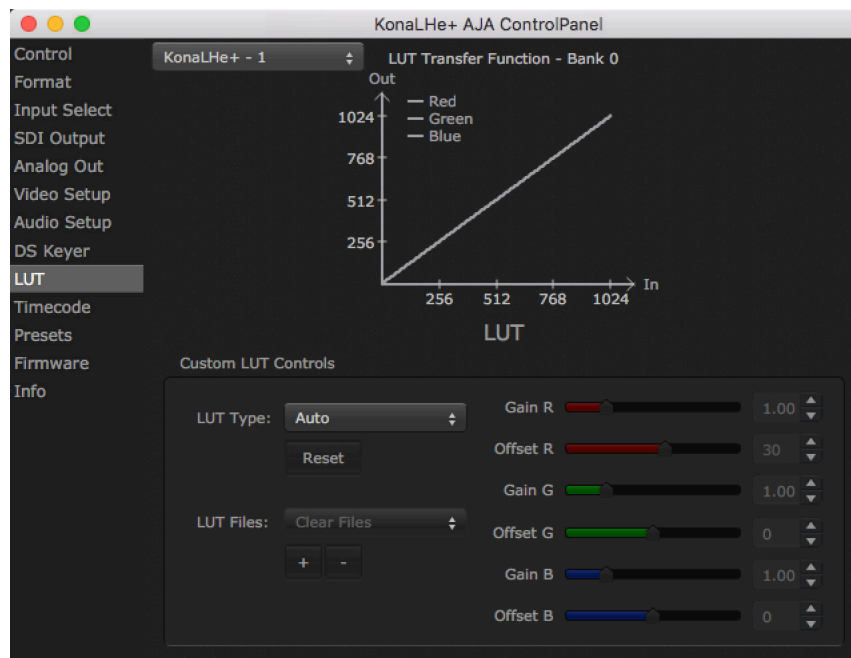
This pulldown allows you to choose from any recently accessed file or select a new file (“Load File...”), which then brings up a file dialogue. Remember that the file raster (pixel x pixel count) should match the primary format in the frame buffer or the secondary format if upconverting. Example: you wish to key a logo on top of your 1920x1080 footage, the still image with alpha channel that you load should be 1920x1080.

Figure 22. Downstream Keyer Graphic Selection



## LUT Screen

Figure 23. AJA Control Panel, LUT Screen



The LUT screen controls allow you to create a custom color look up table (LUT) on the output, for matching a production "look" on a specific display.

Users can also specify their own custom LUTs by creating a LUT file and uploading it to an AJA Video Device using the LUT (lookup table) screen in the Control Panel.

## Custom LUT Controls

The LUT Transfer Function screen displays an approximate representation of the effect of the current LUT settings. When the controls are activated by selecting a User LUT Type, Red, Blue, and Green curves show the transfer functions of each color.

*NOTE: The displayed curves are approximate,. Curves for some extreme settings may diverge significantly from the actual transfer functions.*

### LUT Type

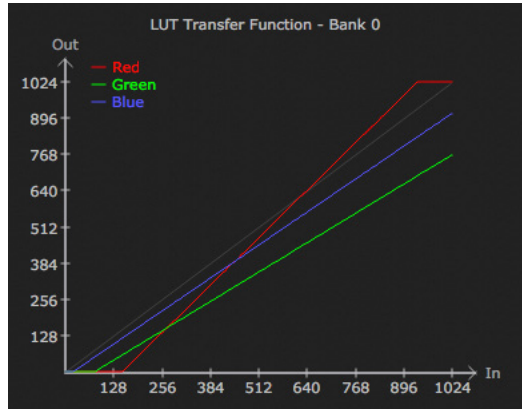
Selects the type of LUT. Choose from

- Auto - LUT will be automatically selected. This setting intelligently applies the type of LUT required in the majority of use cases. For example, if the Frame

Buffer is set to SD 608 and the Output set to HD 709, then an industry standard curve for changing 608 to 709 color space is applied.

- Linear - A linear 1:1 LUT is applied, resulting in no color change (every value for source is mapped to the same value for output).
- SMPTE-FullRange - A conversion LUT from SMPTE to Full Range is applied.
- FullRange-SMPTE - A conversion LUT from Full Range to SMPTE is applied.
- User Linear - Activates the Gain and Offset controls, allowing the manual creation of a custom LUT. Initial default setting is linear.

Figure 24. Example LUT Transfer Function Curves



- User Film Stream - Activates the Gain and Offset controls with a default curve matching Grass Valley FilmStream cameras, and also allowing manual creation of a custom LUT.
- User LUT File - See "[LUT Files](#)" below.

### Gain and Offset Controls

When activated, the controls on the right allow adjustment of Gain and Offset for Red, Blue and Green.

- Sliders - The sliders on the right can be used to change the values for each color.
- Numeric Entry - You also enter a numeric value by clicking on the displayed number, and can increase or decrease the values clicking on the up/down arrow boxes.
- Cut and Paste - Right clicking on a displayed number opens a Cut, Copy, Paste dropdown menu for convenient numeric entry.

### Reset

Clicking on the Reset button resets the currently selected LUT Type to its default values (not active for a User LUT file).

### LUT Files

The User LUT File setting above activates the LUT Files dropdown, allowing the selection of a previously saved LUT file. You can create a custom LUT file using most text editors or spread sheets, provided the data is arranged according to the LUT File Format Specification that follows (see "[LUT File Format Specification](#)" on [page 40](#)).

## Uploading Custom User LUT file

---

Once the LUT file is created, you can upload it with the following steps:

1. Before loading a LUT, make sure you are using an RGB/RGBA frame buffer format, and that you have a AJA Video Device that supports LUTs.
2. Open AJA Control Panel and select the "LUT" pane.
3. Click the "LUT Type" popup and choose "User LUT File" menu item. Note "LUT Files" options become enabled.
4. Click the "+" button and use the navigation dialog to choose a custom LUT file. The LUT is now loaded.

## LUT File Format Specification

---

LUT files are normal text files that contain 1025 lines (numbered 0 - 1024). Each line contains 3 integer values in the range 0 - 1023, representing 10 bit R, G, B component output values. Component values may be separated by one or more commas, spaces, or tabs. The example below show LUT File contents for Line 0, Line 1, Line 2, and Line 1024, with several valid ways to separate the numbers in a line.

- 16, 17, 17
- 17 18 18
- 19 19 21
- ...
- 1000, 1022, 1023

In the example above, the first line (Line 0) represents the output values for the case where R=0, G=0, or B=0. In other words, if the R component of a pixel is set to 0, then set R component value to 16. Likewise, if G is set to 0, then set G to 17. The second line

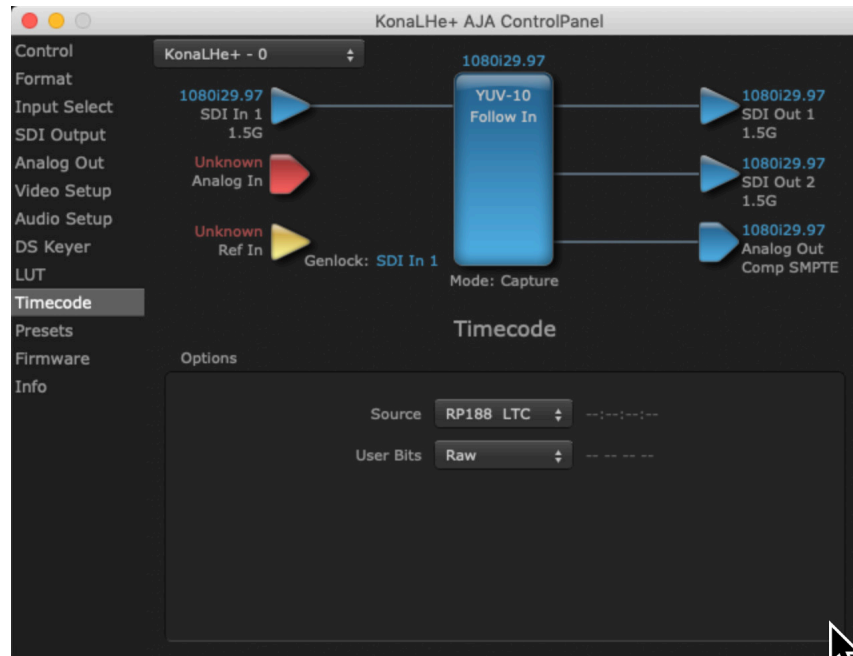
(Line 1) does a similar thing for input component values equal to 1.

A simple way to construct a LUT file is to use a Spreadsheet like Excel. Simply fill 3 columns and 1025 rows with LUT data, and save the result as a "CSV" file.



# Timecode Screen

Figure 25. AJA Control Panel, Timecode Screen



The Timecode Screen selects the timecode stream read for applications that use it (for example, when the timecode source is set to “Use control panel setting,” AJA Control Room will read the selected stream). It is also used for monitoring the RP-188 timecode embedded in the digital data stream).

## Options

### Source

In RP-188 timecode (SMPTE 12M-2) there can be multiple timecode types in the data stream. Use this pull-down to select the one you wish to monitor:

- RP188 LTC (Linear timecode)
- RP188 VITC (Vertical Interval timecode)
- LTC Port input

The selection will be displayed in the timecode value to the right of the pull-down.

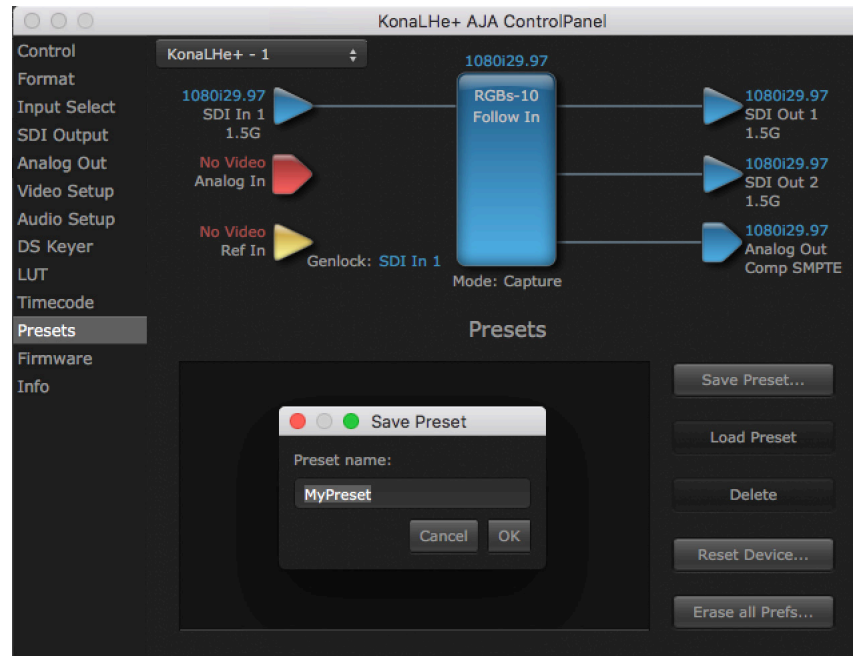
### User Bits

Select from Raw or VFR. For monitoring a variable framerate (VFR) timecode (such as Varicam), you may wish to select VFR for User-bits. KONA will detect and interpret the user-bits and display them next to the checkbox. You will see the original framerate (30 fps in the figure below) followed by the adjusted frame padding (two digits reporting discarded and retained frame padding).

**NOTE:** SMPTE 12M-2 is the updated name and specification for what was RP-188.

## Presets Screen

Figure 26. AJA Control Panel, Presets Screen



After configuring the AJA Control Panel screens, you can then save all your settings as a snapshot for later recall, called a preset. In this way, you can organize presets for all your typical tasks, eliminating manual reconfiguration.

## Saving, Loading and Deleting Presets

To save a preset, simply go to the Presets screen and click "Save Preset". A dialog will be presented asking you for a file name. Enter a meaningful name and click "OK". Thereafter the preset will be available under the Control Panel "Presets" list.

From the Presets screen you can manage your collection of presets easily. To Load or Delete a stored preset, just select it with your mouse and then click the "Load Preset" or "Delete" button respectively .

## Transferring Saved Presets

If you want to use a saved Preset on another workstation, you can simply copy the file on removable storage and install it at the new location. The Preset files are stored at:

### Mac OS Preset Files Storage Location

- From the Finder, hold down the Option key (to display the Library directory) and click on Go/Library/Application Support/AJA/<device name>/Presets/

### Windows Preset Files Storage Location

- c:\Users\<username>\AppData\Local\AJA\Control Panel\<device name> Presets\

## Reset to Default

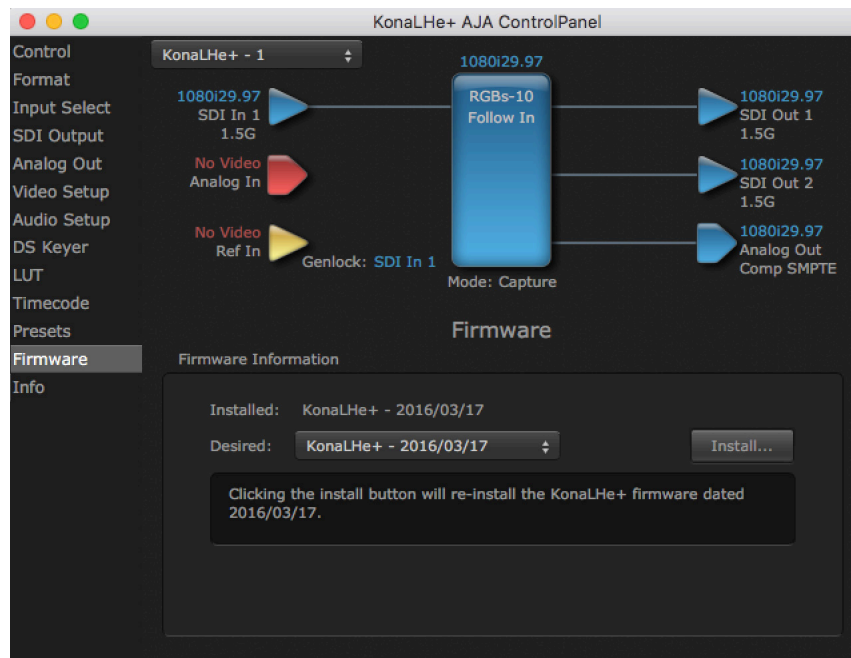
When you click the "Reset Device" button the Default User Preference file will be deleted and AJA Control Panel will do one of the following:

- If a Default Global Preference is found, it is loaded and the device is set to this state.
- If a Default Global Preference file is not found, "factory defaults" are loaded and the device is set to this state.

*NOTE: See "Default Preferences" on page 23 for more information.*

## Firmware Screen

Figure 27. AJA Control Panel, Firmware Screen



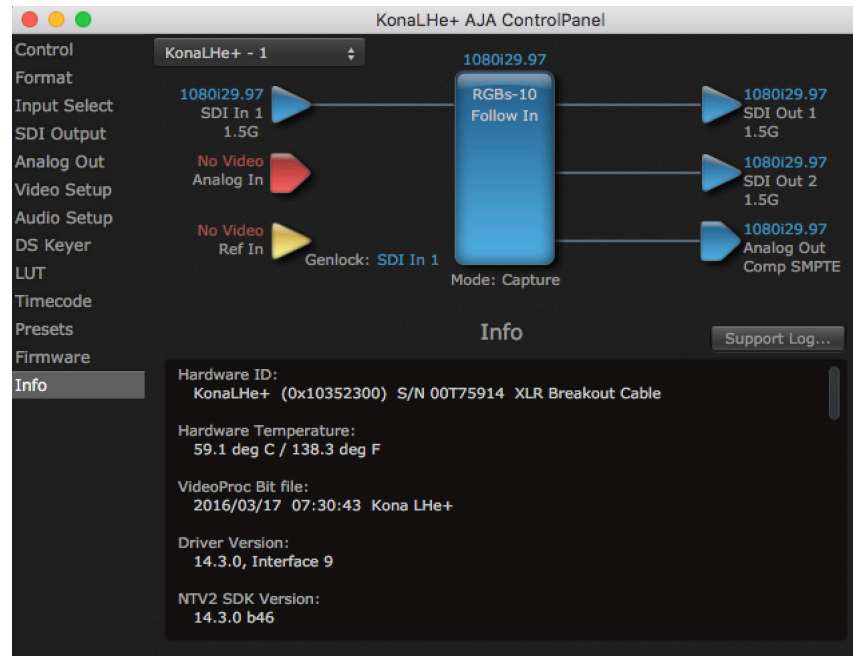
Use the Firmware link to access the firmware update/changeover screen. Click **Install** to erase the current firmware and load the desired firmware.

You will be required to power-cycle your computer to finish the changeover.

See "[Firmware Update Procedure](#)" on page 17 for details.

## Info Screen

Figure 28. AJA Control Panel, Information Screen (Standard Mode)

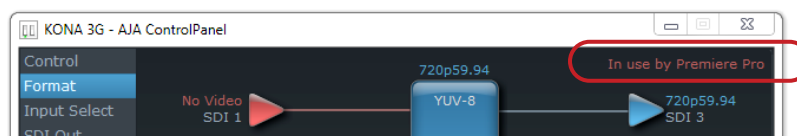


This screen shows the KONA software files that have been installed on your system. This information may be needed if you talk to an AJA Customer Service representative to determine if files are missing or need updating.

## Who is Controlling KONA?

There are times when you might have several applications open at one time, and each of these might want to output their video through the KONA video output. KONA is very flexible and most applications perform the necessary housekeeping so they work correctly when they're active and when they're not. This means that the application that is "active" (in front) will be granted control of the KONA video output. Generally, when you switch to a different application, the previous application lets go of the video output and the new application gets control.

Figure 29. AJA Control Panel Control Message



The AJA Control Panel in-use message will tell you the "active" application that has control of KONA (see in-use message above) and what the format selections are. If you click on another supported application that is running (such as Adobe Premiere Pro or AJA TV), the AJA Control Panel in-use message will report the change by displaying the new "In use" application. If no in-use message is displayed, the AJA Control Panel is in control of KONA. If no QuickTime applications are running, the board's state is determined by the AJA Control Panel application's settings.

## QuickTime Application Format Selection

If a running QuickTime application uses KONA for capture or output, it controls the Primary format via its own menus and settings. For example, when the Third-party editing application is active (it's the front-most application) and has KONA as its "A/V Device", the KONA's Primary format is determined by the application's "Video Playback" settings. These format selections are reported in the AJA Control Panel block diagram.

QuickTime applications can start and stop and change modes—even while they are running. And the behavior of different QuickTime applications can vary: some applications take control of the interface as soon as they are launched and don't give it up until they quit, while other applications take control of the interface only when they are the "front-most" running application and then relinquish control when they're not. Even these QuickTime applications may not relinquish control until capture or output operations are completed.

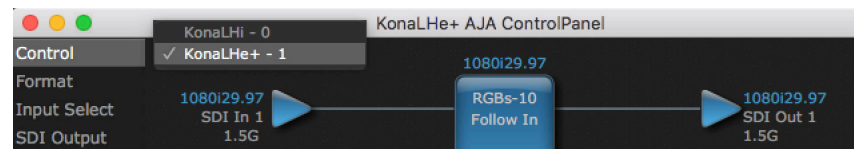
## Control Recommendations

We recommend you have the Control Panel running and visible at all times. When the Control Panel is running in the background (not front-most) you can see what the interface is doing and who has control of it.

## Using Multiple AJA Products

More than one AJA product can be used with your host computer. Using the AJA Control Panel application, you can choose which installed product an application uses for input/output. In the upper left corner of the AJA Control Panel application, you will see a board name and the pane heading will read "AJA Control Panel" if you have more than one product and the associated drivers installed (if only one product is installed, you'll see no product or pull down and the product name will appear in the header). To "target" a specific installed product for use, click on the text in the upper left hand side of the UI and select from the list of available products that appear in the pull down.

*Figure 30. Control Panel Screen Showing Multiple AJA Devices*

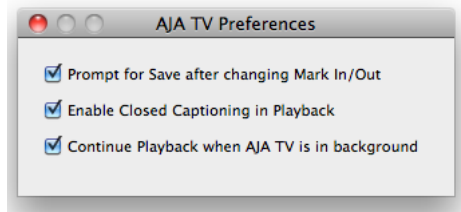


When you launch an application, or AJA TV, the application will use the product that is currently selected in the AJA Control Panel for its input/output. When an application is running, you can change the "targeted" product selection using the Control Panel pull down menu. The running application will retain its connection to the product. If you change the "targeted" product and launch a different application, that application will use the new product for its input/output, while the first application you launched will continue to use the other AJA product.

Example: if you select a KONA card as the targeted product in the AJA Control Panel application and launch an Adobe video editing application, that application is now using the KONA card for its input/output. Go back to the AJA Control Panel application and select an Io Express as the "targeted" product. Launch the AJA TV application. AJA TV will now use the Io Express for its output. If you switch back to the Adobe application, you will see that it is still using KONA for its input/output. Note that some applications, like AJA TV, have a provision for playing in the

background, so playback on one product could even continue when switching the targeted device for use with another application. In such cases, you can even feed the output from one AJA product to another AJA product on the same system.

*Figure 31. AJA TV Preferences, Continue Playback when AJA TV is in background*



AJA TV optionally supports playback in the background; checkbox "Continue Playback when AJA TV is in background."

## Notes on Using Multiple AJA Products:

---

Performance of multi-product use depends on a variety of factors: CPU usage, RAM, disk IOPS/ bandwidth for streams of video, etc. and therefore performance may vary. Also be aware that multiple input/output streams are only supported by software that is explicitly designed for a multi-product environment.

## Using 8-bit Versus 10-bit Video

---

While both 8- and 10-bit uncompressed video are capable of providing excellent quality broadcast video, 10-bit represents a significantly higher quality and is preferable in many situations.

Because 10-bit video has four times the numerical precision when compared to 8-bit, it has a signal-to-noise ratio 12 db higher than 8-bit video.

Visually, in 8-bit video compared to 10-bit video, you will notice a substantial difference. In 8-bit video there will be "contour lines" or "striations" visible, particularly noticeable in scenes having soft gradients like a ramp or sunset. For example, if a sky region is mostly the same color but varies by only a few digital numbers from one side of the picture to another, you may see contour lines where the signal passes from one digital value to the next higher value.

Since each numerical value in a 10-bit system is only one fourth as large as an 8-bit system's, these contours become invisible and the sky varies smoothly.

10-bit video is often used when the source and output video (or "master") is also 10-bit. Even if the input and/or output video is 8-bit, a 10-bit "project" will still maintain a higher quality when there is a significant amount of effects rendering involved.

Industry standard professional mastering formats—Sony Digital Betacam for Standard Definition and Panasonic D5 for High Definition—are both true 10-bit formats.

# Appendix A – Specifications

---

## KONA LHi Tech Specs

---

### Video Formats

---

- (2K) 2048 x 1080p 23.98, 24, 25
- (2K) 2048 x 1080PsF 23.98, 24
- (HD) 1080i 50, 59.94, 60
- (HD) 1080PsF 23.98, 24
- (HD) 1080p 23.98, 24, 25, 29.97, 30, 50, 59.94, 60
- (HD) 720p 50, 59.94, 60
- (SD) 625i 50
- (SD) 525i 59.94

### Software Dependent Formats

---

- 720p 23.98
- 525i 23.98

NOTE: These formats are dependent on specific software functionality and are not normal over the wire formats.

### Video Input Digital

---

- 3G/SD/HD SDI, SMPTE-259/292/296/424, 8 or 10-bits
- Single Link 4:2:2 (1x BNC)
- HDMI v1.3 30 bits/pixel, RGB or YUV, 2.25 Gbps, SD, HD, 1080p 50/60 (1x mini-HDMI)

### Video Input Analog

---

- Composite/S-Video (Y/C) (1x BNC/2x BNC+Adapter)
- NTSC, NTSCJ, PAL
- Component (3x BNC)
- HD: YPbPr, RGB
- SD: YPbPr, RGB (component mode)
- SMPTE/EBU N10, Betacam 525 line, Betacam 525J, RGB
- 12-bit D/A, 8x oversampling
- +/- .2 dB to 5.0 MHz Y Frequency Response
- +/- .2 dB to 1 MHz C Frequency Response
- .5% 2T pulse response
- <1% Diff Phase
- <1% Diff Gain
- <1 ns Y/C delay inequity

### Video Output Digital

---

- 3G/SD/HD SDI, SMPTE-259/292/296/424
- Single Link 4:2:2 or 4:4:4 (1x BNC)
- HDMI v1.3 30 bits/pixel, RGB or YUV, 2.25 Gbps, SD, HD, 1080p 50/60 (1 x mini-HDMI)

### Video Output Analog

---

- Composite/S-Video (Y/C) (1x BNC/2x BNC+Adapter)

- NTSC, NTSCJ, PAL
- Component (3x BNC)
- HD: YPbPr, RGB
- SD: YPbPr, RGB (component mode)
- SMPTE/EBU N10, Betacam 525 line, Betacam 525J, RGB
- 12-bit D/A, 8x oversampling
- +/- .2 dB to 5.0 MHz Y frequency response
- +/- .2 dB to 1 MHz C frequency response
- .5% 2T pulse response
- <1% Diff Phase
- <1% Diff Gain
- <1 ns Y/C delay inequity

#### Audio Input Digital

---

- 8-Channel, 16- and 24-bit SMPTE-259 SDI embedded audio, 48 kHz sample rate, synchronous
- 8-Channel, 16- and 24-bit HDMI embedded audio, 48 kHz sample rate, synchronous
- 2-Channel, 16- and 24-bit AES/EBU audio, 48 kHz sample rate, synchronous or nonsynchronous, internal sample rate conversion (via 1x XLR on breakout cable or optional KLHi-Box)

#### Audio Input Analog

---

- 2-Channel, 16- and 24-bit A/D analog audio, 48 kHz sample rate, balanced (via 2 x XLR on DB-25 breakout cable or optional KLHi-Box)
- +24 dBu full scale digital
- +/- 0.2 dB 20 Hz to 20 kHz frequency response

#### Audio Output Digital

---

- 8-Channel, 16- and 24-bit SMPTE-259 SDI embedded audio, 48 kHz sample rate, synchronous
- 8-Channel, 16- and 24-bit HDMI embedded audio, 48 kHz sample rate, synchronous
- 2-Channel, 16- and 24-bit AES/EBU audio, 48 kHz sample rate, synchronous or nonsynchronous, internal sample rate conversion (via 1x XLR on breakout cable or optional KLHi-Box)

#### Audio Output Analog

---

- 2-Channel, 16- and 24-bit D/A analog audio, 48 kHz sample rate, balanced (via 2x XLR on DB-25 breakout cable or optional KLHi-Box)
- +24 dBu full scale digital (0 dbFS)
- +/- 0.2 dB 20 Hz to 20 kHz frequency response
- 2-Channel unbalanced output (via 2x RCA jacks on optional KLHi-Box)

#### Up-Conversion

---

- Hardware 10-bit
- Anamorphic: fullscreen
- Pillarbox 4:3: results in a 4:3 image in center of screen with black sidebars
- Zoom 14:9: results in a 4:3 image zoomed slightly to fill a 14:9 image with black side bars
- Zoom Letterbox: results in image zoomed to fill full screen
- Zoom Wide: results in a combination of zoom and horizontal stretch to fill a 16:9 screen; this setting can introduce a small aspect ratio change



## Down-Conversion

---

- Hardware 10-bit
- Anamorphic: fullscreen
- Letterbox: image is reduced with black top and bottom added to image area with the aspect ratio preserved
- Crop: image is cropped to fit new screen size

## Cross-Conversion

---

- Hardware 10-bit
- 1080i to 720p
- 720p to 1080i
- 720p to 1080PsF

## SD to SD aspect ratio conversion

---

- Letterbox: This transforms SD anamorphic material to a letterboxed image
- H Crop: Will produce a horizontally stretched effect on the image; transforms anamorphic SD to full frame
- SD Pillarbox: Will produce an image in the center of the screen with black borders on the left and right sides and an anamorphized image in the center
- V Crop: Will transform SD letterbox material to an anamorphic image

## Reference Input

---

- Analog Color Black (1V) or Composite Sync (2 or 4V)
- Looping
- 75 ohm on optional KLHi-Box, terminated on supplied breakout cable

## Electrical Interface

---

- 4-lane PCIe 1.0

## Machine Control

---

- RS-422, Sony 9-pin protocol (via DB-25 breakout cable or optional KLHi-Box)
- 9-pin D-connector pinout is as follows:
  - 1 GND
  - 2 RX-
  - 3 TX+
  - 4 GND
  - 5 No Connection
  - 6 GND
  - 7 RX+
  - 8 TX-
  - 9 GND
  - Shell GND

## Size (w x d x h)

---

- .75" x 8.25" x 5.0" (19.05mm x 209.55mm x 127mm)

## Weight

---

- 0.7 lb (0.4 kg)

## Power

---

- 13W typical, 15W maximum

## Environment

---

- Safe Operating Temperature: 0 to 40 degrees C (32 to 104 degrees F)
- Safe Storage Temperature (Power OFF): -40 to 60 degrees C (-40 to 140 degrees F)
- Operating Relative Humidity: 10-90% noncondensing
- Operating Altitude: <3,000 meters (<10,000 feet)

# KONA LHe Plus Tech Specs

---

## Video Formats

---

- (HD) 1080i 50, 59.94, 60
- (HD) 1080p 23.98, 24, 25, 29.97, 30
- (HD) 1080PsF 23.98, 24, 25, 29.97, 30
- (HD) 720p 50, 59.94, 60
- (SD) 625i 50
- (SD) 525i 59.94

## Video Input Digital

---

- SD/HD SDI, SMPTE-259/292/296, 8 or 10-bits
- Single Link 4:2:2 (1x BNC)

## Video Input Analog

---

- Composite/S-Video (Y/C) (1x BNC/2x BNC+Adapter)
- NTSC, NTSCJ, PAL
- Component (3x BNC)
- HD: YPbPr, RGB
- SD: YPbPr, RGB (component mode)
- SMPTE/EBU N10, Betacam 525 line, Betacam 525J, RGB
- 12-bit A/D, 8x oversampling
- +/- .2 dB to 5.0 MHz Y Frequency Response
- +/- .2 dB to 1 MHz C Frequency Response
- .5% 2T pulse response
- <1% Diff Phase
- <1% Diff Gain
- <1 ns Y/C delay inequity

## Video Output Digital

---

- HD SDI, SMPTE-292/296, 10-bit
- SD SDI, SMPTE-259M, 10-bit

## Video Output Analog

---

- Composite/S-Video (Y/C) (1x BNC/2x BNC+Adapter)
- NTSC, NTSCJ, PAL
- Component (3x BNC)
- HD: YPbPr, RGB
- SD: YPbPr, RGB (component mode)
- SMPTE/EBU N10, Betacam 525 line, Betacam 525J, RGB
- 12-bit D/A, 8x oversampling
- +/- .2 dB to 5.0 MHz Y Frequency Response
- +/- .2 dB to 1 MHz C Frequency Response

- .5% 2T pulse response
- <1% Diff Phase
- <1% Diff Gain
- <1 ns Y/C delay inequity

#### Audio Input Digital

---

- 8-Channel, 16- and 24-bit SMPTE-259 SDI embedded audio, 48 kHz sample rate, synchronous
- 2-Channel, 16- and 24-bit AES/EBU audio, 48 kHz or 96 kHz sample rate, synchronous or nonsynchronous, internal sample rate conversion (via 1x XLR on breakout cable or optional KL-Box)

#### Audio Input Analog

---

- 2-Channel, 16- and 24-bit A/D analog audio, 48 kHz sample rate, balanced (via 2x XLR on breakout cable or optional KL-Box)
- +24 dBu Full Scale Digital
- +/- 0.2 dB 20 Hz to 20 kHz frequency response

#### Audio Output Digital

---

- 8-Channel, 16- and 24-bit SMPTE-259 SDI embedded audio, 48 kHz sample rate, synchronous
- 2-Channel, 16- and 24-bit AES/EBU audio, 48 kHz or 96 kHz sample rate, synchronous or nonsynchronous, internal sample rate conversion (via 1x XLR on breakout cable or optional KL-Box)

#### Audio Output Analog

---

- 2-Channel, 16- and 24-bit D/A analog audio, 48 kHz sample rate, balanced (via 2x XLR on breakout cable or optional KL-Box)
- +24 dBu Full Scale Digital (0dBFS)
- +/- 0.2 dB 20 Hz to 20 kHz Frequency Response
- 2-Channel unbalanced output (via 2x RCA jacks on optional KL-Box)

#### Down-conversion

---

- Hardware 10-bit
- Anamorphic: fullscreen
- Letterbox: image is reduced with black top and bottom added to image area with the aspect ratio preserved
- Crop: image is cropped to fit new screen size

#### Reference Input

---

- Analog Color Black (1V) or Composite Sync (2 or 4V)
- Looping
- 75 ohms on optional KL-Box, terminated on supplied breakout cable

#### Electrical Interface

---

- 4-lane PCIe 1.0

## Machine Control

---

- RS-422, Sony 9-pin protocol (via breakout cable or optional KL-BOX)
- 9-pin D-connector pinout is as follows:
  - 1 GND
  - 2 RX-
  - 3 TX+
  - 4 GND
  - 5 No Connection
  - 6 GND
  - 7 RX+
  - 8 TX-
  - 9 GND
- Shell GND

## Size (w x d x h)

---

- .75" x 8.25" x 5.0" (19.05mm x 209.55mm x 127mm)

## Weight

---

- 0.7 lb (0.4 kg)

## Power

---

- 13W typical, 15W maximum

## Environment

---

- Safe Operating Temperature: 0 to 40 degrees C (32 to 104 degrees F)
- Safe Storage Temperature (Power OFF): -40 to 60 degrees C (-40 to 140 degrees F)
- Operating Relative Humidity: 10-90% noncondensing
- Operating Altitude: <3,000 meters (<10,000 feet)

# Appendix B – Safety & Compliance

---

## Federal Communications Commission (FCC) Compliance Notices

---

### Class B Interference Statement

---

This equipment has been tested and found to comply with the limits for a Class B digital device, pursuant to Part 15, Subpart B of the FCC Rules. These limits are designed to provide reasonable protection against harmful interference in a residential installation. This equipment generates, uses, and can radiate radio frequency energy and, if not installed and used in accordance with the instructions, may cause harmful interference to radio communications. However, there is no guarantee that interference will not occur in a particular installation. If this equipment does cause harmful interference to radio or television reception, which can be determined by turning the equipment off and on, the user is encouraged to try to correct the interference by one or more of the following measures:

- Reorient or relocate the receiving antenna.
- Increase the separation between the equipment and receiver.
- Connect the equipment into an outlet on a circuit different from that to which the receiver is connected.
- Consult the dealer or an experienced radio/TV technician for help.

### FCC Caution

---

This device complies with Part 15 of the FCC Rules. Operation is subject to the following two conditions: (1) This device may not cause harmful interference, and (2) this device must accept any interference received, including interference that may cause undesired operation.

## Canadian ICES Statement

---

### Canadian Department of Communications Radio Interference Regulations

This digital apparatus does not exceed the Class B limits for radio-noise emissions from a digital apparatus as set out in the Radio Interference Regulations of the Canadian Department of Communications. This Class B digital apparatus complies with Canadian ICES-003.

### Règlement sur le brouillage radioélectrique du ministère des Communications

Cet appareil numérique respecte les limites de bruits radioélectriques visant les appareils numériques de classe B prescrites dans le Règlement sur le brouillage radioélectrique du ministère des Communications du Canada. Cet appareil numérique de la Classe B est conforme à la norme NMB-003 du Canada.

## European Union and European Free Trade Association (EFTA) Regulatory Compliance

---

This equipment may be operated in the countries that comprise the member countries of the European Union and the European Free Trade Association. These countries, listed in the following paragraph, are referred to as The European Community throughout this document:

AUSTRIA, BELGIUM, BULGARIA, CYPRUS, CZECH REPUBLIC, DENMARK, ESTONIA, FINLAND, FRANCE, GERMANY, GREECE, HUNGARY, IRELAND, ITALY, LATVIA, LITHUANIA, LUXEMBOURG, MALTA, NETHERLANDS, POLAND, PORTUGAL, ROMANIA, SLOVAKIA, SLOVENIA, SPAIN, SWEDEN, UNITED KINGDOM, ICELAND, LICHTENSTEIN, NORWAY, SWITZERLAND

## Declaration of Conformity

Marking by this symbol indicates compliance with the Essential Requirements of the EMC Directive of the European Union 2014/30/EU.



This equipment meets the following conformance standards:

### Safety

EN 60065: 2014 (T-Mark License),

IEC 60065: 2014, (CB Scheme Report/Certificate)

Additional licenses issued for specific countries available on request.

### Emissions

EN 55032: 2012 + AC: 2013, CISPR 32: 2015

EN 61000-3-2: 2014, EN 61000-3-3: 2013

### Immunity

EN 55103-2: 2009, EN 61000-4-2:2009, EN 61000-4-3:2006 +A1:2008 +A2:2010,

EN 61000-4-4:2004+ A1:2010, EN 61000-4-5:2006, EN 61000-4-6:2009,

EN 61000-4-11:2004

Environments: E2, E3 and E4

The product is also licensed for additional country specific standards as required for the International Marketplace.



**Warning!** This is a Class B product. In a domestic environment, this product may cause radio interference, in which case, the user may be required to take appropriate measures.

**Achtung!** Dieses ist ein Gerät der Funkstörgrenzwertklasse B. In Wohnbereichen können bei Betrieb dieses Gerätes Rundfunkstörungen auftreten, in welchen Fällen der Benutzer für entsprechende Gegenmaßnahmen verantwortlich ist.

**Attention!** Ceci est un produit de Classe B. Dans un environnement domestique, ce produit risque de créer des interférences radioélectriques, il appartiendra alors à l'utilisateur de prendre les mesures spécifiques appropriées.

## Recycling Notice



This symbol on the product or its packaging indicates that this product must not be disposed of with your other household waste. Instead, it is your responsibility to dispose of your waste equipment by handing it over to a designated collection point for the recycling of waste electrical and electronic equipment. The separate collection and recycling of your waste equipment at the time of disposal will help conserve natural resources and ensure that it is recycled in a manner that protects human health and the environment. For more information about where you can drop off your waste for recycling, please contact your local authority, or where you purchased your product.

## Korea KCC Compliance Statement

<p>B급 기기 (가정용 방송통신기자재)</p>	<p>이 기기는 가정용(B급) 전자파적합기기로서 주로 가정에서 사용하는 것을 목적으로 하며, 모든 지역에서 사용할 수 있습니다.</p>
<p>Class B (Broadcasting Communication Equipment for Home Use)</p>	<p>As an electromagnetic wave equipment for home use (Class B), this equipment is intended to use mainly for home use and may be used in all areas.</p>

## Taiwan Compliance Statement

警告使用者：  
這是甲類的資訊產品，在居住的環境中使用時，可能會造成射頻干擾，在這種情況下，使用者會被要求採取某些適當的對策。

This is a Class B product based on the standard of the Bureau of Standards, Metrology and Inspection (BSMI) CNS 13438, Class B. In a domestic environment this product may cause radio interference in which case the user may be required to take adequate measures.

## Japan Compliance Statement

この装置は、クラスB情報技術装置です。この装置は、家庭環境で使用することを目的としていますが、この装置がラジオやテレビジョン受信機に近接して使用されると、受信障害を引き起こすことがあります。  
取扱説明書に従って正しい取り扱いをして下さい。 VCCI-B

This is a Class B product based on the standard of the VCCI Council (VCCI 32: 2016). If this is used near a radio or television receiver in a domestic environment, it may cause radio interference. Install and use the equipment according to the instruction manual.

## Translated Warning and Caution Messages

The following caution statements, warning conventions, and warning messages apply to this product and manual.



Warning Symbol



Caution Symbol

## Before Operation Please Read These Instructions



**Warning!** Read and follow all warning notices and instructions marked on the product or included in the documentation.

**Avertissement!** Lisez et conformez-vous à tous les avis et instructions d'avertissement indiqués sur le produit ou dans la documentation.

**Warnung!** Lesen und befolgen Sie die Warnhinweise und Anweisungen, die auf dem Produkt angebracht oder in der Dokumentation enthalten sind.

**¡Advertencia!** Lea y siga todas las instrucciones y advertencias marcadas en el producto o incluidas en la documentación.

**Aviso!** Leia e siga todos os avisos e instruções assinalados no produto ou incluídos na documentação.

**Avviso!** Leggere e seguire tutti gli avvisi e le istruzioni presenti sul prodotto o inclusi nella documentazione.



**Warning!** Do not use this device near water and clean only with a dry cloth.

**Avertissement!** N'utilisez pas cet appareil près de l'eau et nettoyez-le seulement avec un tissu sec.

**Warnung!** Das Gerät nicht in der Nähe von Wasser verwenden und nur mit einem trockenen Tuch säubern.

**¡Advertencia!** No utilice este dispositivo cerca del agua y límpielo solamente con un paño seco.

**Aviso!** Não utilize este dispositivo perto da água e limpe-o somente com um pano seco.

**Avviso!** Non utilizzare questo dispositivo vicino all'acqua e pulirlo soltanto con un panno asciutto.



**Warning!** Do not block any ventilation openings. Install in accordance with the manufacturer's instructions.

**Avertissement!** Ne bloquez aucune ouverture de ventilation. Suivez les instructions du fabricant lors de l'installation.

**Warnung!** Die Lüftungsöffnungen dürfen nicht blockiert werden. Nur gemäß den Anweisungen des Herstellers installieren.

**¡Advertencia!** No bloquee ninguna de las aberturas de la ventilación. Instale de acuerdo con las instrucciones del fabricante.

**Aviso!** Não obstrua nenhuma das aberturas de ventilação. Instale de acordo com as instruções do fabricante.

**Avviso!** Non ostruire le aperture di ventilazione. Installare in conformità con le istruzioni del fornitore.



**Warning!** Do not install near any heat sources such as radiators, heat registers, stoves, or other apparatus (including amplifiers) that produce heat.

**Avertissement!** N'installez pas l'appareil près d'une source de chaleur telle que des radiateurs, des bouches d'air de chauffage, des fourneaux ou d'autres appareils (amplificateurs compris) qui produisent de la chaleur.

**Warnung!** Nicht in der Nähe von Wärmequellen wie Heizkörpern, Heizregistern, Öfen oder anderen Wärme erzeugenden Geräten (einschließlich Verstärkern) aufstellen.

**¡Advertencia!** No instale cerca de fuentes de calor tales como radiadores, registros de calor, estufas u otros aparatos (incluidos amplificadores) que generan calor.

**Aviso!** Não instale perto de nenhuma fonte de calor tal como radiadores, saídas de calor, fogões ou outros aparelhos (incluindo amplificadores) que produzam calor.

**Avviso!** Non installare vicino a fonti di calore come termosifoni, diffusori di aria calda, stufe o altri apparecchi (amplificatori compresi) che emettono calore



**Warning!** Unplug this device during lightning storms or when unused for long periods of time.

**Avertissement!** Débranchez cet appareil pendant les orages avec éclairs ou s'il est inutilisé pendant de longues périodes.

**Warnung!** Das Gerät ist bei Gewitterstürmen oder wenn es über lange Zeiträume ungenutzt bleibt vom Netz zu trennen.

**¡Advertencia!** Desenchufe este dispositivo durante tormentas eléctricas o cuando no se lo utilice por largos periodos del tiempo.

**Aviso!** Desconecte este dispositivo da tomada durante trovoadas ou quando não é utilizado durante longos períodos de tempo.

**Avviso!** Utilizzare soltanto i collegamenti e gli accessori specificati e/o venduti dal produttore, quali il treppiedi e l'esoscheletro.





**Warning!** Only use attachments and accessories specified and/or sold by the manufacturer.

**Avertissement!** Utilisez seulement les attaches et accessoires spécifiés et/ou vendus par le fabricant.

**Warnung!** Verwenden Sie nur Zusatzgeräte und Zubehör angegeben und / oder verkauft wurde durch den Hersteller.

**¡Advertencia!** Utilice solamente los accesorios y conexiones especificados y/o vendidos por el fabricante.

**Aviso!** Utilize apenas equipamentos/acessórios especificados e/ou vendidos pelo fabricante.

**Avviso!** Utilizzare soltanto i collegamenti e gli accessori specificati e/o venduti dal produttore.



**Warning!** Refer all servicing to qualified service personnel. Servicing is required when the device has been damaged in any way, such as power-supply cord or plug is damaged, liquid has been spilled or objects have fallen into the device, the device has been exposed to rain or moisture, does not operate normally, or has been dropped.

**Avertissement!** Référez-vous au personnel de service qualifié pour tout entretien. L'entretien est exigé quand l'appareil a été endommagé de quelque manière que ce soit, par exemple lorsque le cordon d'alimentation ou la prise sont endommagés, que du liquide a été versé ou des objets sont tombés dans l'appareil, que l'appareil a été exposé à la pluie ou à l'humidité, ne fonctionne pas normalement ou est tombé.

**Warnung!** Das Gerät sollte nur von qualifizierten Fachkräften gewartet werden. Eine Wartung ist fällig, wenn das Gerät in irgendeiner Weise beschädigt wurde, wie bei beschädigtem Netzkabel oder Netzstecker, falls Flüssigkeiten oder Objekte in das Gerät gelangen, das Gerät Regen oder Feuchtigkeit ausgesetzt wurde, nicht ordnungsgemäß funktioniert oder fallen gelassen wurde.

**¡Advertencia!** Consulte al personal calificado por cuestiones de reparación. El servicio de reparación se requiere cuando el dispositivo ha recibido cualquier tipo de daño, por ejemplo cable o espigas dañadas, se ha derramado líquido o se han caído objetos dentro del dispositivo, el dispositivo ha sido expuesto a la lluvia o humedad, o no funciona de modo normal, o se ha caído.

**Aviso!** Remeta todos os serviços de manutenção para o pessoal de assistência qualificado. A prestação de serviços de manutenção é exigida quando o dispositivo foi danificado mediante qualquer forma, como um cabo de alimentação ou ficha que se encontra danificado/a, quando foi derramado líquido ou caíram objectos sobre o dispositivo, quando o dispositivo foi exposto à chuva ou à humidade, quando não funciona normalmente ou quando foi deixado cair.

**Avviso!** Fare riferimento al personale qualificato per tutti gli interventi di assistenza. L'assistenza è necessaria quando il dispositivo è stato danneggiato in qualche modo, ad esempio se il cavo di alimentazione o la spina sono danneggiati, è stato rovesciato del liquido è stato rovesciato o qualche oggetto è caduto nel dispositivo, il dispositivo è stato esposto a pioggia o umidità, non funziona correttamente o è caduto



**Warning!** Do not defeat the safety purpose of the polarized or grounding-type plug. A polarized plug has two blades with one wider than the other. A grounding type plug has two blades and a third grounding prong. The wide blade or the third prong are provided for your safety. If the provided plug does not fit into your outlet, consult an electrician for replacement of the obsolete outlet.

**Avertissement!** La sécurité de la prise polarisée ou de la prise de type mise à la terre ne doit en aucun cas être empêchée de fonctionner. Une prise polarisée a deux broches, l'une étant plus large que l'autre. Une prise de type mise à la terre a deux broches et une troisième broche pour la mise à la terre. La broche large ou la troisième broche sont fournies pour votre sécurité. Si la prise fournie ne s'insère pas dans votre prise femelle, consultez un électricien pour le remplacement de la prise femelle obsolète.

**Warnung!** Der Sicherheitszweck des gepolten bzw. Schukosteckers ist zu berücksichtigen. Ein gepolter Stecker verfügt über zwei Pole, von denen einer breiter als der andere ist. Ein Schukostecker verfügt neben den zwei Polen noch über einen dritten Pol zur Erdung. Der breite Pol bzw. der Erdungspol dienen der Sicherheit. Wenn der zur Verfügung gestellte Stecker nicht in Ihren Anschluss passt, konsultieren Sie einen Elektriker, um den veralteten Anschluss zu ersetzen.

**¡Advertencia!** No eche por tierra la finalidad del tipo de enchufe polarizado con conexión a tierra. Un enchufe polarizado tiene dos espigas, una más ancha que la otra. Un enchufe con conexión a tierra tiene dos espigas iguales y una tercera espiga que sirve para la conexión a tierra. La espiga ancha, o la tercera espiga, sirven para su seguridad. Si el enchufe suministrado no encaja en el tomacorriente, consulte con un electricista para reemplazar el tomacorriente obsoleto.

**Aviso!** Não anule a finalidade da segurança da ficha polarizada ou do tipo ligação terra. Uma ficha polarizada tem duas lâminas sendo uma mais larga do que a outra. Uma ficha do tipo de ligação à terra tem duas lâminas e um terceiro terminal de ligação à terra. A lâmina larga ou o terceiro terminal são fornecidos para sua segurança. Se a ficha fornecida não couber na sua tomada, consulte um electricista para a substituição da tomada obsoleta.

**Avviso!** Non compromettere la sicurezza della spina polarizzata o con messa a terra. Una spina polarizzata ha due spinotti, di cui uno più largo. Una spina con messa a terra ha due spinotti e un terzo polo per la messa a terra. Lo spinotto largo o il terzo polo sono forniti per motivi di sicurezza. Se la spina fornita non si inserisce nella presa di corrente, contattare un elettricista per la sostituzione della presa obsoleta.



**Warning!** Since the Mains plug is used as the disconnection for the device, it must remain readily accessible and operable.

**Avertissement!** Puisque la prise principale est utilisée pour débrancher l'appareil, elle doit rester aisément accessible et fonctionnelle.

**Warnung!** Da der Netzstecker als Trennvorrichtung dient, muss er stets zugänglich und funktionsfähig sein.

**¡Advertencia!** Puesto que el enchufe de la red eléctrica se utiliza como dispositivo de desconexión, debe seguir siendo fácilmente accesible y operable.

**Aviso!** Dado que a ficha principal é utilizada como a desconexão para o dispositivo, esta deve manter-se prontamente acessível e funcional.

**Avviso!** Poiché il cavo di alimentazione viene usato come dispositivo di sconnessione, deve rimanere prontamente accessibile e operabile.



**Warning!** Protect the power cord from being walked on or pinched particularly at plugs, convenience receptacles, and the point where they exit from the device.

**Avertissement!** Protégez le cordon d'alimentation pour que l'on ne marche pas dessus ou qu'on le pince, en particulier au niveau des prises mâles, des réceptacles de convenance, et à l'endroit où il sort de l'appareil.

**Warnung!** Vermeiden Sie, dass auf das Netzkabel getreten oder das Kabel geknickt wird, insbesondere an den Steckern, den Steckdosen und am Kabelausgang am Gerät.

**¡Advertencia!** Proteja el cable de energía para que no se le pise ni apriete, en especial cerca del enchufe, los receptáculos de conveniencia y el punto del que salen del equipo.

**Aviso!** Proteja o cabo de alimentação de ser pisado ou de ser comprimido particularmente nas fichas, em tomadas de parede de conveniência e no ponto de onde sai do dispositivo.

**Avviso!** Proteggere il cavo di alimentazione in modo che nessuno ci cammini sopra e che non venga schiacciato soprattutto in corrispondenza delle spine e del punto in cui esce dal dispositivo.



**Warning!** Disconnect the external AC power supply line cord(s) from the mains power before moving the unit.

**Avertissement!** Retirez le ou les cordons d'alimentation en CA de la source d'alimentation principale lorsque vous déplacez l'appareil.

**Warnung!** Trennen Sie die Wechselstrom-Versorgungskabel vom Netzstrom, bevor Sie das Gerät verschieben.

**¡Advertencia!** Cuando mueva la unidad desenchufe de la red eléctrica el/los cable(s) de la fuente de alimentación CA tipo brick.

**Advertência!** Remova os cabos CA de alimentação brick da rede elétrica ao mover a unidade.

**Avvertenza!** Scollegare il cavo dell'alimentatore quando si sposta l'unità.

# Warranty and Liability Information

---

AJA VIDEO SYSTEMS, INC.

## Limited Warranty on Hardware

---

AJA Video Systems, Inc. (AJA Video) warrants that the hardware product, not including storage modules or software components, will be free from defects in materials and workmanship for a period of three (3) years from the date of purchase. AJA Video warrants that the storage modules provided as part of the hardware product will be free from defects in materials and workmanship for a period of one year from the date of purchase. AJA Video provides a separate software warranty as part of the license agreement applicable to software components.

If a hardware product or storage module (hereafter, a “product”) proves to be defective during the applicable warranty period, AJA Video, at its option, will either repair the defective product without charge for parts and labor, or will provide a replacement in exchange for the defective product.

To obtain service under this warranty, the Customer must notify AJA Video of the defect before expiration of the warranty period and make suitable arrangements for the performance of service by contacting AJA Video support through the channels set forth on the support contacts web page at <http://www.aja.com/support>. Except as stated, the Customer shall bear all shipping, packing, insurance and other costs, excluding parts and labor, to effectuate repair. Customer shall pack and ship the defective product to a service center designated by AJA Video, with shipping charges prepaid. AJA Video shall pay to return the product to Customer but only if to a location within the country in which the AJA Video service center is located.

This warranty shall not apply to any defect, failure or damage caused by negligent, inadequate or improper use, handling or maintenance. Without limiting the foregoing, AJA Video shall not be obligated to furnish service under this warranty or repair any damage or malfunction a) resulting from attempts by personnel other than AJA Video representatives to install, repair or service the product, b) resulting from improper use or connection to incompatible equipment, c) caused by the use of non-AJA Video parts or supplies, d) if the product has been modified or integrated with other products when the effect of such a modification or integration increases the time or difficulty of servicing the product, or e) resulting from being dropped or otherwise subjected to undue force, exposure to moisture or other corrosive or conductive substances, exposure to strong magnetic fields, use with improperly regulated power supplies, exposure to electric shock, use in temperatures outside the specified operating range, or otherwise failing to treat the product in accordance with the standard of care appropriate to sensitive and delicate electronic equipment.

EXCEPT AS STATED ABOVE, AJA VIDEO AND ITS VENDORS DISCLAIM IN THEIR ENTIRETY ALL OTHER WARRANTIES, EXPRESS OR IMPLIED, INCLUDING WITHOUT LIMITATION ALL WARRANTIES OF MERCHANTABILITY OR FITNESS FOR A PARTICULAR PURPOSE. AJA VIDEO'S RESPONSIBILITY TO REPAIR OR REPLACE TIMELY REPORTED DEFECTIVE PRODUCTS IS THE WHOLE AND EXCLUSIVE REMEDY CUSTOMER IS PROVIDED WITH RESPECT TO HARDWARE PRODUCTS AND THEIR STORAGE MODULES. SOME JURISDICTIONS DO NOT ALLOW THE EXCLUSION OF IMPLIED WARRANTIES OR LIMITATIONS ON APPLICABLE STATUTORY RIGHTS OF A CONSUMER, SO SOME OR ALL OF THE TERMS OF THIS PARAGRAPH MAY NOT APPLY TO YOU.

THE PRODUCT IS NOT INTENDED, STATED, OR WARRANTED TO OPERATE UNINTERRUPTED OR ERROR-FREE. YOU UNDERSTAND AND ACKNOWLEDGE THAT THE PRODUCT IS NOT INTENDED TO BE USED AS THE SOLE OR PRIMARY DATA SOURCE OR TARGET FOR CRITICAL DATA, AND THAT IT IS YOUR RESPONSIBILITY TO IMPLEMENT REDUNDANT CAPTURE AND BACKUP SYSTEMS AS APPROPRIATE.

## Limitation of Liability

---

Under no circumstances shall AJA video BE LIABLE IN ANY WAY FOR ANY LOST, CORRUPTED OR DESTROYED DATA, FOOTAGE OR WORK, OR FOR ANY OTHER INDIRECT, SPECIAL, INCIDENTAL OR CONSEQUENTIAL DAMAGES OR LOST PROFITS, OR FOR ANY THIRD PARTY CLAIM, IN CONNECTION WITH THE PRODUCT, WHETHER RESULTING FROM DEFECTS IN THE PRODUCT, SOFTWARE OR HARDWARE FAILURE, OR ANY OTHER CAUSE WHATSOEVER, EVEN IF AJA VIDEO HAS BEEN ADVISED OF THE POSSIBILITY OF SUCH DAMAGES. AJA VIDEO'S LIABILITY IN CONNECTION WITH THE PRODUCT SHALL UNDER NO CIRCUMSTANCES EXCEED THE PURCHASE PRICE PAID FOR THE PRODUCT. The foregoing limitations apply even if any remedy set forth in this LIMITED WARRANTY fails of its essential purpose. SOME JURISDICTIONS DO NOT ALLOW THE LIMITATION OF LIABILITY FOR PERSONAL INJURY, OR OF INCIDENTAL OR CONSEQUENTIAL DAMAGES, SO SOME OR ALL OF THE TERMS OF THIS PARAGRAPH MAY NOT APPLY TO YOU.

## Governing Law and Language; Your Rights.

---

This limited warranty is the only warranty provided by AJA Video on the hardware product. It supersedes all prior or contemporaneous understandings regarding such subject matter. No amendment to or modification of this warranty will be binding unless in writing and signed by AJA Video. The laws of the State of California, USA will govern this warranty and any dispute arising from it. Any translation of this Agreement is intended for convenience and to meet local requirements and in the event of a dispute between the English and any non-English versions, the English version of this warranty will govern. This limited warranty gives you specific legal rights and you may have other rights that vary from jurisdiction to jurisdiction, some of which are noted above.

# Index

---

## Symbols

- 3rd-Party Plugins 6
- 8-Bit Video 46
- 10-Bit Video 46

## A

- AJA Control Panel 6
- AJA Control Room 6
- AJA Software & Utilities 5
- AJA Support 2
- AJA System Test 6, 13
- Analog Black Level 34
- Analog Output
  - Select 33
- Analog Out Screen
  - Standard Mode 33
- Application
  - Controlling KONA 22
- Audio Ch 31, 32
- Audio Input 30
- Audio Out 37
- Audio Setup 35
- Audio Setup Screen 35
- Auto 30

## B

- Block Diagram Area 20
- BMP Format 19
- Breakout Box 10
  - KL-Box 11
  - KLHi-Box 10
- Breakout Cable
  - KONA LHe 10
  - KONA LHi 10

## C

- Capture Formats 19
- Color Space 32
- Connector Descriptions 11
- Controlling Application 22
- Control Panel 6, 19
  - Block Diagram Area 20
  - Conversion Icon 22
  - Framebuffer 21
  - Input/Output Icon 21
  - Primary Format 21
  - Secondary Format 21
  - UI Colors 20
  - User Interface 20
- Control Panel Control Message 44
- Control Room 6
- Control Screen
  - Standard Mode 25
- Conversion Icon 22
- Cross-Conversion 28
- Custom LUT Controls 38

## D

- Default Output 25
- Default Preferences 23
- Delete Preset 42
- Disk Storage Methods 7
- Down Conversion 28
- Downstream Keyer Mode 36
- Downstream Keyer Screen
  - Standard Mode 36
- DPX Format 19

## F

- Features
  - KONA LHe Plus 8
  - KONA LHi 7
- Firmware Screen 43
- Firmware Update Procedure 17
- Follow Input 28
- Foreground Pre-Multiplied 37
- Format Conversions 28
- Format Screen
  - 27
- Framebuffer
  - Control Panel UI 21

## G

- Genlock 26
- Global Preference 23
- Global Preference File Location 23
- Graphic File Load 37

## H

- HDMI Input Settings
  - KONA LHi 32
- HDMI Output
  - Select 31
- HDMI Screen
  - Standard Mode 31
- Hold Last App 26

## I

- Information Screen
  - Standard Mode 44
- Input/Output Icon 21
- Input Passthrough 25
- Input Select Screen
  - 29
- Installation
  - KONA Card 14

## K

- KL-Box 11
- KLHi-Box 10
- KONA Card
  - Installation 14
- KONA KL-Box 11

- KONA LHe Plus Endplate 10
- KONA LHe Plus Features 8
- KONA LHi Endplate 10
- KONA LHi Features 7
- KONA Models 5

## L

- Load Preset 42
- Local Preference 23
- Local Preference File 23
- LUT File 38, 39
- LUT File Format Specification 40
- LUT Gain and Offset Controls 39
- LUT Screen 38
- LUT Type 38

## M

- Matte Color 37
- Monitor Channels 35
- Monitor Level 35
- MOV Format 19
- Multiple AJA Devices 45
- MXF Format 19

## O

- Opacity 37
- Overview 5

## P

- Pixel Format 27
- Playback Timing 26
- Preference 23
- Preference File Location
  - Default Global 23
- Preset
  - Delete 42
  - Load 42
  - Save 42
- Preset Files Storage Location 22, 42
- Presets 22
- Presets Screen 42
- Primary 30
- Primary Format 21
- Protocol 32

## Q

- QuickTime Format 19
- QuickTime Format Selection 45

## R

- Reset to Default 43
- RGB Range 27, 32

## S

- Save Preset 42
- SDI

- Video Input 29
- SDI Output
  - Select 30
- SDI Output Screen
  - Standard Mode 30
- Secondary 30
- Secondary Format 21
- Select
  - Analog Output 33
  - HDMI Output 31
  - SDI Output 30
- Shipping Box Contents 13
- Snapshot 42
- Software 5
- Software Download 17
- Software Installation 17
- Source
  - Video Input 29
- Stereo 3D 31
- System Connections
  - KONA LHe 16
  - KONA LHi 15
- System Requirements 6
- System Test 6

## T

- Technical Support 2
- Test Pattern 26
- TGA Format 19
- Third-Party Application 17
- Thunderbolt PCIe External Chassis 14
- Timecode Screen 41
- Timecode Source 41
- Transferring Saved Presets 42

## U

- Up Conversion 28
- Uploading Custom User LUT file 40
- User Bits 41
- Utilities 5

## V

- VANC Checkbox 34
- Video Format (Primary and Secondary) 27
- Video Input 29
- Video+Key 31
- Video Setup Screen
  - Standard Mode 34