

FS1

Release Notes—Version 2.2.0.48

General

This release is recommended for all FS1 users. It improves operation and fixes issues present in the earlier release version 2.2.0.47.

Improvements

- Improved lock on upconverted composite video.
- Under some circumstances the R-y component of SDI or Component video output could be lost—this has been fixed.
- Improved closed captioning on the composite video output when 720p output format has been selected for the SDI output.

Installing the Latest Software

Although the FS1 comes from the factory pre-installed with software, it may not be as up-to-date as software posted on our AJA website. The following topics in these notes describe the steps required to upgrade the software in your AJA FS1.

Download the Latest FS1 Software

Current and past releases of FS1 software are available on AJA's website. To get the software, point your browser to:

<http://www.aja.com/support/converters/converters-fs1.php>

Once you see the update page, FS1 software files can be selected for downloading to your Mac or PC for upgrading your local FS1 machine.

Unpack the Software

FS1 software update files are “ZIP” files, which you can open with a number of standard and third party uncompressor applications. The software image that you'll install on the FS1 is a file with a name like fs1_ver_2.2.0.48.bin or similar. Depending on your PC or Mac operating system settings, the “.bin” extension may not be visible to you in a file directory.

In the archive there will be a README.TXT file. Please open and read the file so you will be aware of any updates or information that did not get in the manual or release notes.

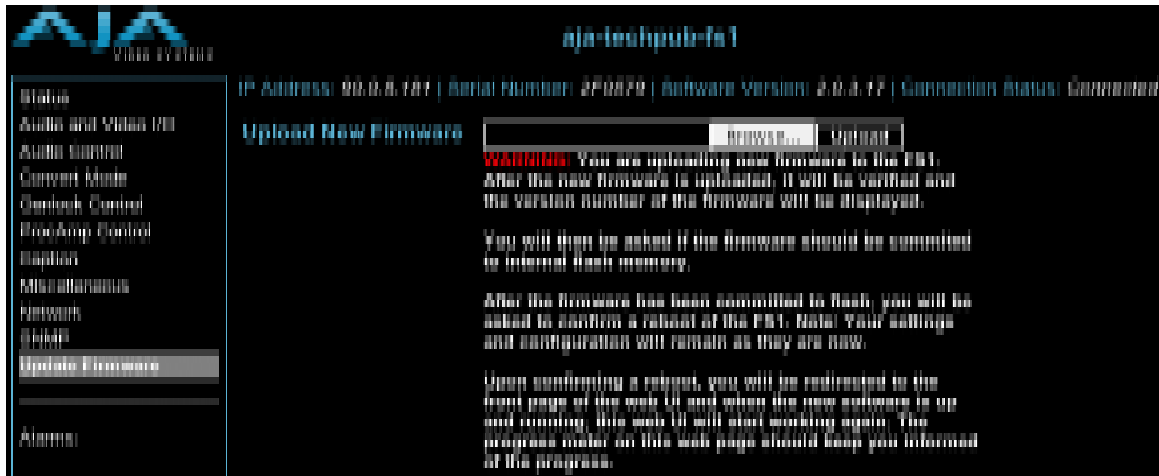


Web: www.aja.com Phone: 530.274.2048 Fax: 530.274.9442

Uploading and Installing the Software to the FS1

Uploading and installing the software update only requires a PC or Mac that can “see” the FS1 via its ethernet connection. Follow this procedure to install the software:

1. Point your browser at the FS1's upgrade page by clicking on the “Update Firmware” link at the bottom of the navigation box on the left-hand side of any FS1 web page. The FS1 web pages are discussed in the FS1 User Manual, Chapter 5.



Update Firmware Screen

2. Click the “Browse...” button to select the file you previously downloaded. For example: fs1_ver_2.2.0.48.bin contained in the zipfile downloaded from AJA.
3. When you have selected a valid FS1 image file, click the “Upload” button in the web browser. The file you select will upload to the FS1 and be tested for validity. Incomplete, corrupted, or non-FS1 software files are rejected.
3. Wait for the procedure to complete—it will take only a few minutes. When done, the FS1 will prompt you to restart your FS1. After restart, the FS1 will be running the new software—and if necessary, will perform a second and final upgrade phase, updating four items inside the FS1. Progress is shown on the front panel of the FS1 only. This second upgrade phase is performed only once per software update and may take up to 8 minutes.
4. Once these steps are complete, the FS1 will be running the software you just uploaded until the next time you upgrade it. The configuration of the FS1 prior to the upgrade will be preserved. Ensure the new software is running by bringing up the FS1 web page again; the software version is displayed at the top of all FS1 web screens. If for some rare reason it didn't update, you can then run through the update steps again.



Important Notes:

- After upgrading from versions of software 1.0.2.21 or prior, you now only need to enter the FS1's IP address to communicate with it via web browser (i.e., "http://90.0.5.181"). The port number (":8080") is no longer required as it was previously. If you do enter the port number, the FS1 will not respond (i.e., "http://90.0.5.181:8080").
- If there is a power outage or glitch during the software download, the FS1 will boot the older version and the upgrade process can then be re-started by the user. This happens because the FS1 has been designed with a safety feature where an internal "safe" copy of the previous software is retained in the event the updating process fails.

