

AJA IPT-1G-SDI and IPT-1G-HDMI

Release Notes - v1.0

General

This is the initial release of firmware for both IPT-1G-SDI and IPT-1G-HDMI

Key Features of IPT-1G-SDI

- Converts SDI video and audio to VSF TR-01 compliant JPEG 2000 within an MPEG2-TS
- 1x 3G-SDI BNC input with 4:2:2 10-bits/pixel
- 1x 3G-SDI BNC loop-through
- 2 channels of audio embedded in SDI supported (Ch1, Ch2)
- Additional 2 channel RCA analog audio input
- 1x RJ-45 (IEC 60603-7) for 10/100/1000 Base-T Ethernet Control Port for network (LAN) control and status
- 1x RJ-45 (IEC 60603-7) for 10/100/1000Base-T Ethernet Media Port
- Media Port also capable of controlling the unit
- Essence support: VSF TR-01 and other JPEG 2000 via MPEG-2 TS
- Full 10-bit pixel processing pipeline
- Quick network setup with AJA eMini-Setup software:

<https://www.aja.com/family/software#eminisetup>

For additional information, please refer to the IPT-1G-SDI section of the AJA website:

<https://www.aja.com/products/mini-converters/ip-converters>

Key Features of IPT-1G-HDMI

- Converts HDMI video and audio to VSF TR-01 compliant JPEG 2000 within an MPEG2-TS
- 1x full size connector for HDMI v1.4a 24/30 bits per pixel, RGB/YUV
- 2 channels of audio embedded in HDMI supported (Ch1, Ch2)
- Additional 2 channel RCA analog audio input
- 1x RJ-45 (IEC 60603-7) for 10/100/1000Base-T Ethernet Control Port for network (LAN) control and status
- 1x RJ-45 (IEC 60603-7) for 10/100/1000Base-T Ethernet Media Port
- Media Port also capable of controlling the unit
- Essence support: VSF TR-01 and other JPEG 2000 via MPEG-2 TS
- Full 10-bit pixel processing pipeline
- Quick network setup with AJA eMini-Setup software:

<https://www.aja.com/family/software#eminisetup>

For additional information, please refer to the IPT-1G-HDMI section of the AJA website:

<https://www.aja.com/products/mini-converters/ip-converters>

Installing and working with AJA eMini-Setup

AJA eMini-Setup is the easiest way to set up your IPT-1G-SDI or IPT-1G-HDMI Ethernet equipped Mini-Converter to work on a network .

Available for Windows and Mac OS, AJA eMini-Setup also allows for easy firmware updating over the USB Config port using a supplied USB cable.

Step 1:

- Acquire eMini-Setup from the AJA website:
 - <https://www.aja.com/family/software#eminisetup>

Step 2:

- Install eMini-Setup:
 - Unzip the Installer
 - Run the .dmg file on macOS or the .msi file on Windows

Step 3:

- Connect Power to your AJA Ethernet equipped Mini-Converter

Step 4:

- Connect the USB Config cable to the Computer running eMini-Setup

Step 5:

- Open eMini-Setup and Configure the device's network settings

Note: DHCP will be enabled by default, and if the device is connected to a DHCP server, the IP address field will populate

Step 6:

- Type in (or Copy/Paste) the IP address into a Browser Window
 - This will get you into the web based GUI for your AJA device

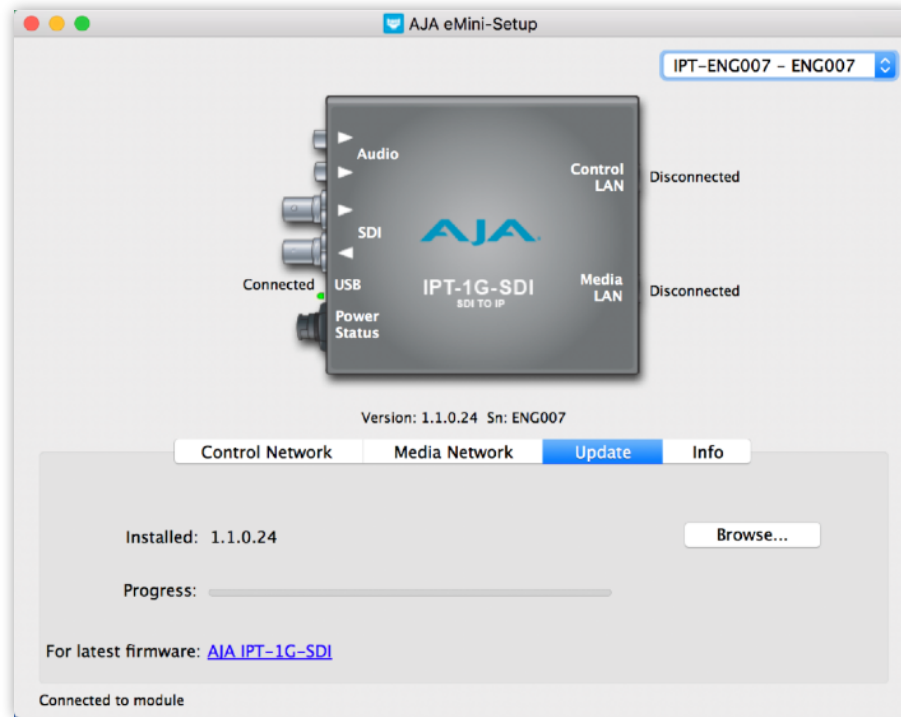
Step 7:

- Use the Web GUI to fully configure, control and use your AJA Device

Updating IPT-1G-SDI Firmware

1. Check the AJA website for new firmware: <https://www.aja.com/products/mini-converters/ip-converters#support>
2. If new software is available, download it and decompress the file archive (.zip).
3. Connect the device to a Mac or PC via a USB port on the computer.

4. Click the Update tab. Click the Browse button. Navigate to the firmware (.ajas extension), open it, and confirm the update. Progress will be shown via the “Progress” bar.

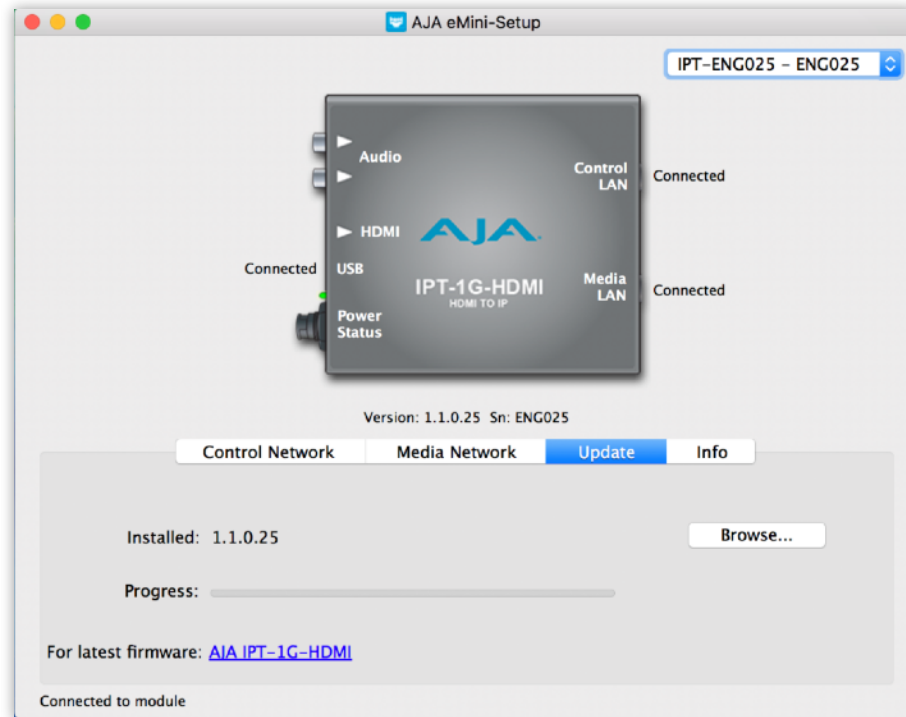


5. After the update, the AJA device must be rebooted by clicking on the Reboot button in the prompt window.

Updating IPT-1G-HDMI Firmware

1. Check the AJA website for new firmware: <https://www.aja.com/products/mini-converters/ip-converters#support>
2. If new software is available, download it and decompress the file archive (.zip).
3. Connect the device to a Mac or PC via a USB port on the computer.

4. Click the Update tab. Click the Browse button. Navigate to the firmware (.ajas extension), open it, and confirm the update. Progress will be shown via the “Progress” bar.



5. After the update, the AJA device must be rebooted by clicking on the Reboot button in the prompt window.

Technical Support

AJA Technical Support is free and available to help you answer questions or resolve issues with any of your AJA products.

To contact AJA Technical Support:

Email: support@aja.com

Phone: +1-530-271-3190 Fax: +1-530-274-9442

Web: www.aja.com/support

Shipping: 180 Litton Dr. Grass Valley, CA 95945 USA