



## Release Notes—KONA version 6.0.3

### General

If you are installing your KONA hardware into a computer that has previously had another video capture card or drivers, we recommend running the AJA KONA Conflict Checker utility BEFORE installing the KONA software. The AJA KONA Conflict Checker will help you identify old drivers or software files that need to be removed before installing the new software. Also, please read the “ReadMeFirst.PDF” document on the installation CD, particularly if you are installing for the first time.

### Installation Notes—Please Read

**Note:** *Version 6.0.3 is only for Final Cut Studio Version 2. Earlier Final Cut Pro versions should not use this software. Please ensure you use the correct software for your system. AJA Driver Compatibility as of KONA Version 6 software is as follows:*

- FCP 6.0.x - KONA Driver version 6.0.3 (Leopard and Tiger OS compatible version)
- FCP 6.0.x - KONA Driver versions 5.0 through 5.1 NDD (Leopard and Tiger OS compatible versions)
- FCP 6.0.x - KONA Driver version 4.0 (Tiger OS compatible version)

Also, please note that Easy Setups from earlier versions may not work properly in Final Cut Studio 2 (FCP 6).

AJA provides separate installers for each board that only install the board-specific driver for a given KONA board. Please ensure that you use the correct installer for the KONA model present in your system. If you install the wrong software, the KONA Control Panel will report “no board” due to incorrect driver installation. Also, if you should ever wish to regress to an earlier version of software, you will have to perform the following steps to ensure proper operation. *Do not try to simply run an older KONA installer over a newer version*—doing so will not properly remove the newer components and will lead to improper operation.

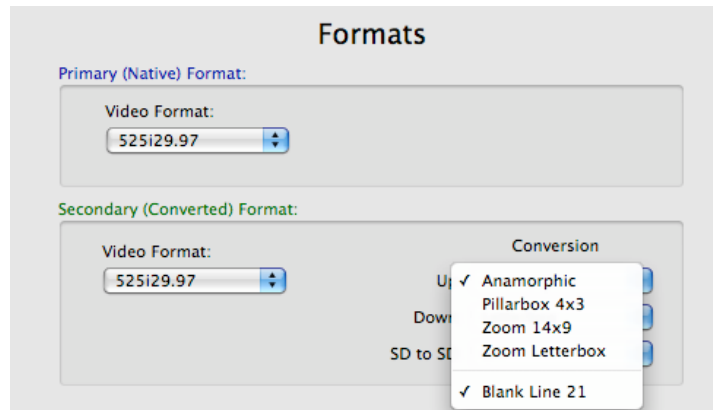
1. Run the KONA Uninstaller from the current installation.
2. Install the desired KONA software using its installer package.

**Note:** If after installing the Version 6.0.3 update, you launch Final Cut Pro and receive a warning message during its launch concerning “Quartz Extreme”—then go to the AJA Control Panel’s *Setup* Tab screen and uncheck the *Enable Desktop Display* checkbox. Next, reboot the Macintosh—this will clear the error and ensure proper operation.



## New Features

- A “Line 21 blanking switch” has been added to the KONA Control Panel to enable/disable the passing of line 21 when up-converting. The new control is on the Format tab under the “Conversion” options (“Up” menu choices). This resolves an issue where the vertical blanking was too wide. (KONA 3)

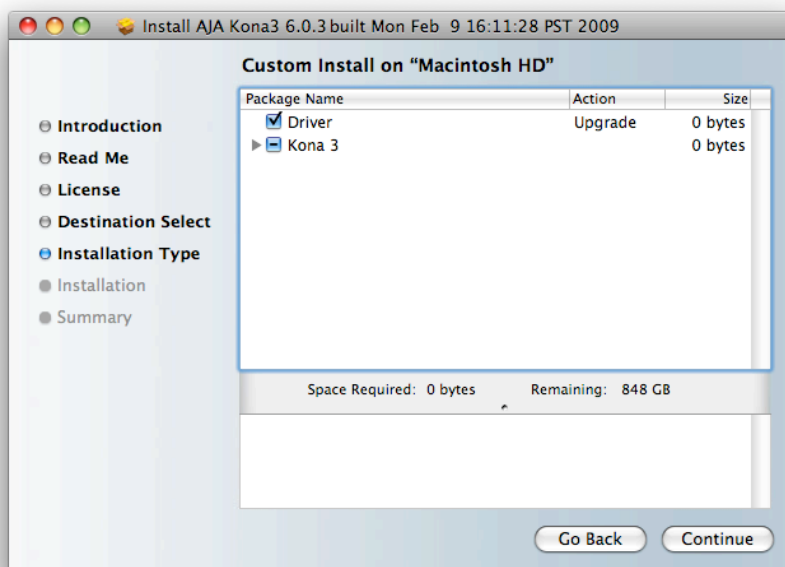


- New easier-to-use KONA software and easy setup installer. Now you can decide at the time of installation exactly which components you want installed. The Easy Setups have been grouped and groups can be individually selected, one or more, for installation. Please read the topic later on in these notes: “Using the New Installer.” (All KONAs)

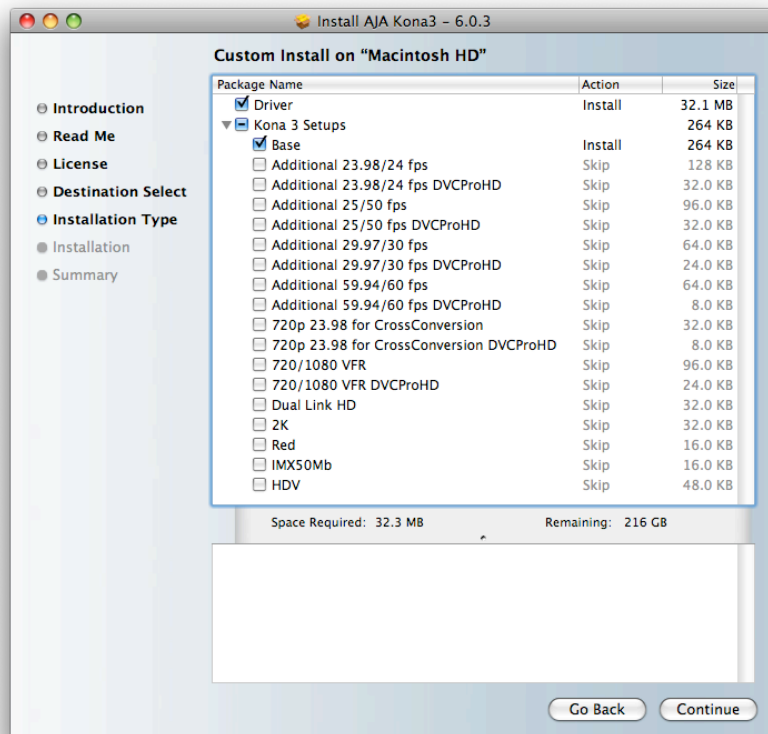
## Improvements and Fixes

- Resolved an issue during capture involving down-conversion of 1080i29.97 to 525i29.97. (KONA LH)
- Improved gamma integrity of KONA captured clips that are modified in After Effects and then brought back into Final Cut Pro for further editing. (all KONA)

## Using the New Installer

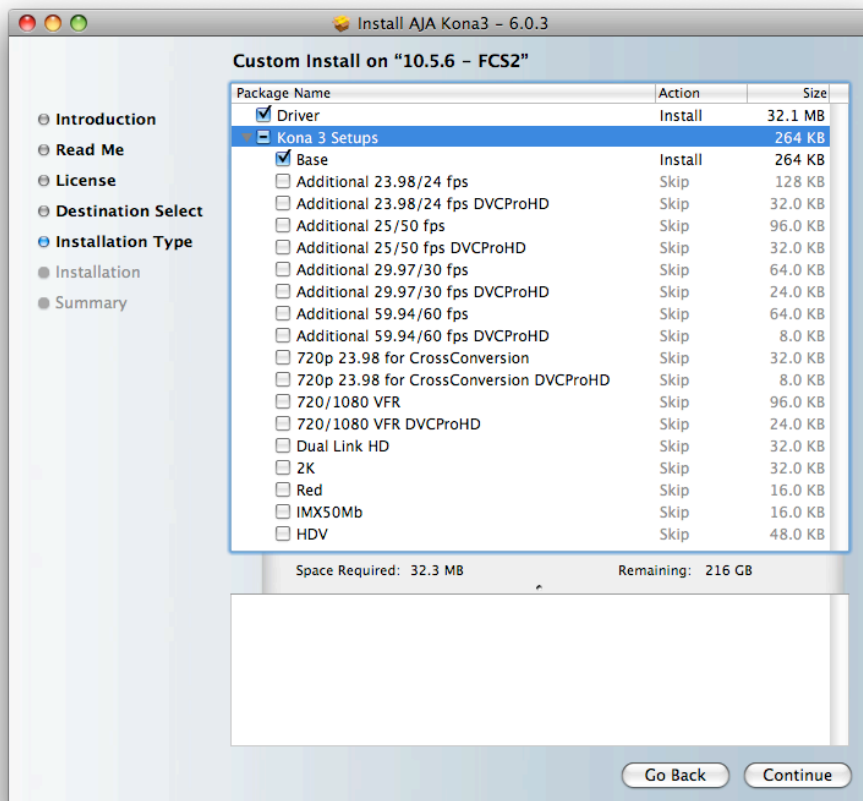


When you update your KONA software under 6.0.3, the installer now allows a variety of choices directly from the installer screens. You can check to install only the driver, or only certain Easy Setups, or everything (all Easy Setups and the driver). Clicking in a box selects an item for installation. If you click on the “Kona” box, all Easy Setups will be installed. If instead you click on the triangle next to the “Kona” box, you’ll then see all the individual Easy Setup choices.



By default, the Easy Setup choice “Base” setups is selected, which is usually right for most users. In addition to that, you may wish to select some additional choices that correspond to your workflow (HDV, 1080p, etc.)

After installation, you can find the Easy Setups installed in the usual Final Cut Easy Setups folder (Base Setups are at the top level—all others are in folders with appropriate names):  
*Macintosh HD/Library/Application Support/ Final Cut Pro System Support/Custom Settings/ Kona 3 Easy Setups*



## Updating KONA 3 Firmware

When you update your KONA 3 software by downloading new versions from the [aja.com](http://aja.com) website, it is possible that some versions may also require a firmware update to update the software stored in non-volatile memory on the board. The Version 6.0.3 KONA 3 software *does not* require an accompanying firmware update to operate the card with the new software if you are updating from version 6 (updating from earlier versions will require the firmware update). Follow these instructions for the required firmware update:

1. First install the new version of KONA 3 software.
2. After successfully installing the new KONA 3 software, then locate the AJA Utilities folder and find the AJA KONA Firmware Updater application in the folder.
3. Double-click the AJA KONA Firmware Updater icon to run the application. When the updater starts, a welcome screen is displayed.
4. Click Continue to begin the update process. A message will be displayed asking if you're ready to install and listing the new version number. Click Install to proceed.
5. After the firmware installation completes, you'll be asked to shut down the Mac computer, wait for two seconds, and then turn it back again. Restarting the Mac will not load the new firmware—you must initiate a complete ON/ OFF power cycle to load the new firmware into the hardware.

## Reverting to an Earlier Firmware Version

Under normal circumstances you should never need to revert to an earlier firmware version since they are tied to driver versions. The only case would be if you wished to back your KONA driver software to an earlier version that ran under earlier firmware. For example, Version 6 KONA software drivers requires a new firmware version, that once installed prevents you from running pre-Version 6 KONA software. If you decide to roll back to pre-Version 6, you'll have to first revert the firmware to the previous 32-bit Firmware used with those versions.

Fortunately, this is easy to do using the same updater used to update it. As in the Firmware Update procedure, go through steps 1 through 4. Then when you get to the Install screen, click on the box marked "Revert to 32 Bit DMA Firmware" and then click on the Install button. The older firmware will be installed and then you'll be asked to shut down the Mac computer, wait for two seconds, and then turn it back again—just as you did when you originally installed it. As before, you must initiate a complete ON/OFF power cycle to load changed firmware into the hardware.

## Recommended Configuration for Mac Computers

For information on Mac computer slot configuration for KONA cards, please visit the following page on the AJA website: [http://www.aja.com/html/support\\_kona\\_rec\\_sys.htm](http://www.aja.com/html/support_kona_rec_sys.htm)

