

R44E

4-Channel Monitoring Encoder R-series Card Module

User Manual



AJA
AJA VIDEO SYSTEMS INC

June 7, 2005 P/N 101643-00

Trademarks

AJA, Io, and Kona are trademarks of AJA Video, Inc. All other trademarks are the property of their respective holders.

Notice

Copyright © 2005 AJA Video, Inc. All rights reserved. All information in this manual is subject to change without notice. No part of the document may be reproduced or transmitted in any form, or by any means, electronic or mechanical, including photocopying or recording, without the express written permission of AJA Inc.

FCC Emission Information

This equipment has been tested and found to comply with the limits for a Class A digital device, pursuant to Part 15 of the FCC Rules. These limits are designed to provide reasonable protection against harmful interference when the equipment is operated in a commercial environment. This equipment generates, uses and can radiate radio frequency energy and, if not installed and used in accordance with the instruction manual, may cause harmful interference to radio communications. Operation of this equipment in a residential area is likely to cause harmful interference in which case the user will be required to correct the interference at his own expense. Changes or modifications not expressly approved by AJA Video can effect emission compliance and could void the user's authority to operate this equipment.

Contacting Support

To contact AJA Video for sales or support, use any of the following methods:

443 Crown Point Circle, Grass Valley, CA. 95945 USA

Telephone: +1.800.251.4224 or +1.530.274.2048

Fax: +1.530.274.9442

Web: <http://www.aja.com>

Support Email: support@aja.com

Sales Email: sales@aja.com

When calling for support, have all information on the product (serial number etc.) at hand prior to calling.

Limited Warranty

AJA Video warrants that this product will be free from defects in materials and workmanship for a period of five years from the date of purchase. If a product proves to be defective during this warranty period, AJA Video, at its option, will either repair the defective product without charge for parts and labor, or will provide a replacement in exchange for the defective product.

In order to obtain service under this warranty, you the Customer, must notify AJA Video of the defect before the expiration of the warranty period and make suitable arrangements for the performance of service. The Customer shall be responsible for packaging and shipping the defective product to a designated service center nominated by AJA Video, with shipping charges prepaid. AJA Video shall pay for the return of the product to the Customer if the shipment is to a location within the country in which the AJA Video service center is located. Customer shall be responsible for paying all shipping charges, insurance, duties, taxes, and any other charges for products returned to any other locations.

This warranty shall not apply to any defect, failure or damage caused by improper use or improper or inadequate maintenance and care. AJA Video shall not be obligated to furnish service under this warranty a) to repair damage resulting from attempts by personnel other than AJA Video representatives to install, repair or service the product, b) to repair damage resulting from improper use or connection to incompatible equipment, c) to repair any damage or malfunction caused by the use of non-AJA Video parts or supplies, or d) to service a product that has been modified or integrated with other products when the effect of such a modification or integration increases the time or difficulty of servicing the product.

THIS WARRANTY IS GIVEN BY AJA VIDEO IN LIEU OF ANY OTHER WARRANTIES, EXPRESS OR IMPLIED. AJA VIDEO AND ITS VENDORS DISCLAIM ANY IMPLIED WARRANTIES OF MERCHANTABILITY OR FITNESS FOR A PARTICULAR PURPOSE. AJA VIDEO'S RESPONSIBILITY TO REPAIR OR REPLACE DEFECTIVE PRODUCTS IS THE WHOLE AND EXCLUSIVE REMEDY PROVIDED TO THE CUSTOMER FOR ANY INDIRECT, SPECIAL, INCIDENTAL OR CONSEQUENTIAL DAMAGES IRRESPECTIVE OF WHETHER AJA VIDEO OR THE VENDOR HAS ADVANCE NOTICE OF THE POSSIBILITY OF SUCH DAMAGES.

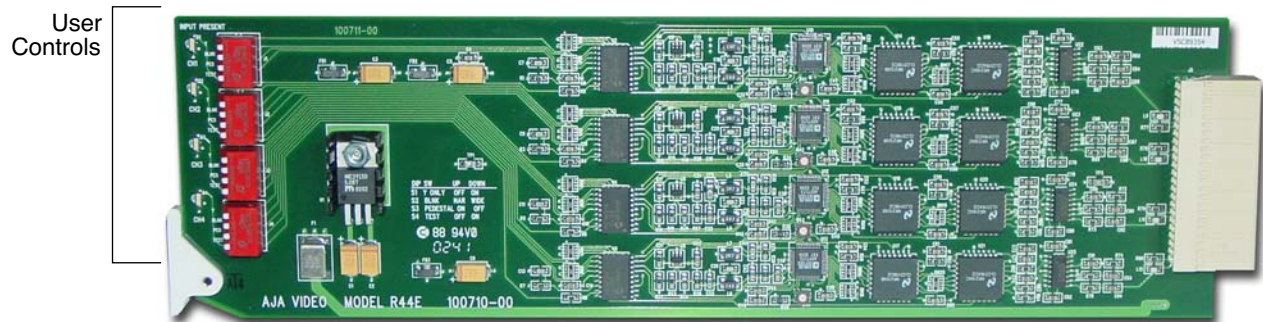
Introduction

The AJA R44E Serial Digital Video Encoder provides four channels of low-cost all-digital encoding of 4:2:2 component serial digital to analog NTSC or PAL. You can use the R44E for monitoring, level/phase checking, check dubs, or desk-top video applications.

The R44E provides one analog output for each serial digital input channel. Each channel has a separate D/A converter with a 10-bit DAC and 8-bit broadcast encoding. Each output can be switched to a Y (luminance) output by making a dip switch selection. The R44E automatically configures to 525 or 625 line component digital inputs and then outputs analog NTSC (525 line input) or PAL (625 line input). All four channels have completely independent configuration and format standards selections. The R44E encodes the full dynamic range of input component video—values below black and above white are not clipped.

In NTSC mode, the 7.5 IRE pedestal can be disabled by dip switch selection. The R44E also provides an internally generated 75% Color Bars test signal for each channel, available via dip switch selection.

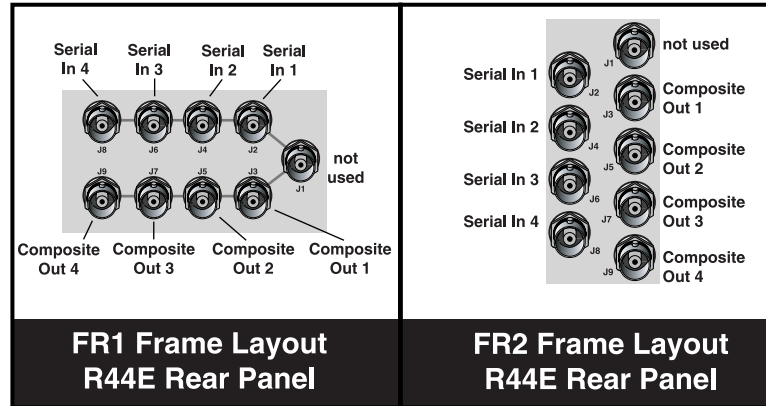
Features



R44E Card Module, Side View

- 4 Channels of SDI (SMPTE 259M) Inputs, 4 x BNC
- Fits AJA R-Series Frames. Also compatible with Leitch 6800 Series Frames.
- 4 NTSC/PAL outputs, 4 x BNC
- User configurable by 4 dipswitches (separate controls for each channel)
- Composite/Y output configurable
- Pedestal
- H/V Blanking
- +/- .25 dB to 5 MHz frequency response

I/O Connections

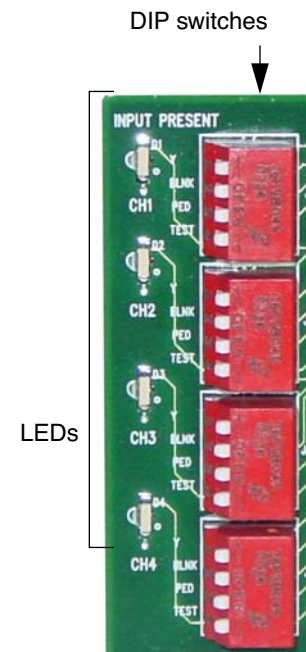


FR1 and FR2 BNC Connector Assignments, R44E Card Module

When the R44E module is installed in an AJA FR1 or FR2 frame, a corresponding group of 9 BNCs on the rear panel then provide I/O for the module. The illustration above shows the connector assignments for both the FR1 and FR2 when used with the R44E.

User Controls

The user interface for the R44E includes four 4-position dipswitches and four status LEDs. Each LED illuminates when an SDI input signal is detected at its respective channel. The dipswitches are used to configure output format, blanking, pedestal and select color bars for testing. The following table under “*Control Functions*” shows what each of the four dipswitch positions perform. All dipswitches function identically for their respective channels. The channel number is marked on the front of the circuit card next to each dipswitch and LED.



Control Functions

Switch Position	Function
S1 Y/C:	ON (Down): output is Y (luminance) OFF (Up): output is composite (NTSC or PAL)
S2 BLNK:	NAR (Up): Vertical (line numbers indicate where video starts) line 13, field 1; line 12, field 2 (525 line) ³² line 10, field 1; line 322, field 2 (625 line) Horizontal (active video line durations) ITU-R.470 (720 pixels PAL/NTSC) WIDE (Down): Vertical (line numbers indicate where video starts) line 22, field 1; line 21, field 2 (525 line) line 23, field 1; line 335, field 2 (625 line) ³² Horizontal (active video line durations) ITU-R/SMPTE (710 pixels NTSC, 702 pixels PAL)
S3 PEDESTAL:	ON (Up): 7.5 IRE pedestal for NTSC OFF (Down): No pedestal NOTE: this has no effect with 625 input
S4 TEST:	ON (Down): Internal 75% Color Bars test pattern output OFF (Up): Normal operation

Installation

Typically, R44E installation consists of the following:

1. disconnect power from the frame (remove line cord)
2. remove the FR1/FR2 front panel
3. install R44E card module
4. apply power to the frame by connecting a north american-style power cord from the frame to mains power (90 to 260 VAC)

Instructions for removing the frame front door for module installation is discussed in the *FR1/FR2 User Manual*.

Specifications

Item	Specification
Input Format:	SMPTE 259 / ITU-R-601 Serial Digital Component
Output Format:	NTSC/PAL. All outputs are separately buffered.
Input:	SMPTE 259 / ITU-R-601 Serial Digital Component
Channels:	4
Differential Gain:	<1.5%
Differential Phase:	<1.5 degree
FrequencyResponse:	+/- 0.25dB to 5MHz (Y)
2T K factor:	<1% (Y)
D/A Converters:	10 bits
Encoder:	8 bits
Output level Adjustment:	Internal, +/-20%
Power Consumption:	+6.5 Volts/8.5 Watts, -6.5 Volts/0 Watts