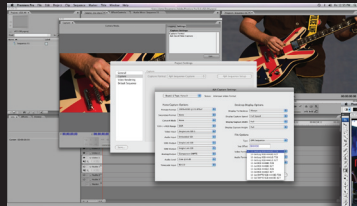
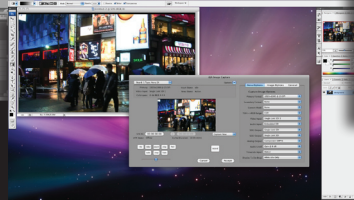


AJA® Mac Plug-ins for Adobe®

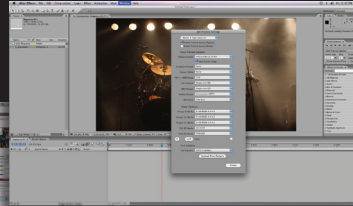
Premiere Pro



Photoshop



After Effects



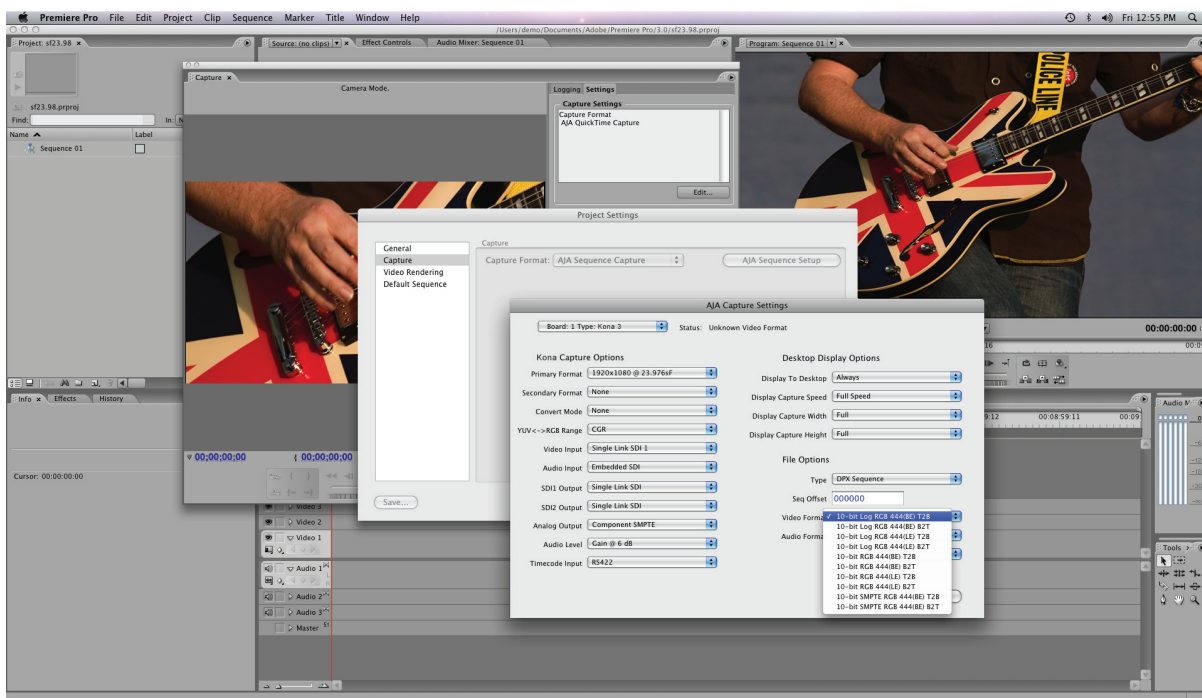
Works With
KONA®

Plug Into Adobe CS3 on Your Mac

AJA Mac Plug-ins for Adobe provide powerful audio and video capture and playback features to Adobe applications. They integrate directly into the look and feel of the software, making operations easier than ever before. With AJA plug-ins, sophisticated features appear as if they were native to the application's user interfaces. Directly supported applications include: Adobe Premiere® Pro, Adobe After Effects®, and Adobe Photoshop®.

Features

- Software is free—download from aja.com in early Q3
- For KONA LSe, LHe, and KONA 3 (not all features work with all models)
- Adobe Premiere Pro Plug-in
- Adobe After Effects Plug-in
- Adobe Photoshop Plug-in
- Works with OSX 10.5.2 and QuickTime 7.4.1 or newer



*AJA Plug-ins match the look and feel of the Adobe Applications—
Adobe Premiere® Pro AJA Capture Settings*

Adobe Premiere Pro® Plug-ins

AJA Mac Plug-ins for Adobe fully integrate with Adobe Premiere Pro CS3 and allow you to capture, review and playback within the application. When installing plug-ins, Project Presets are installed automatically. AJA Effects are listed in the Effects panel and Playback Settings are displayed in the Playback Settings panel. After a Project is created, you can edit KONA card parameters in the Playback Settings and Capture Settings panels. Premiere Pro plug-in features include:

- Capture to Quicktime, DPX, TGA, TIF, BMP, CIN, YUV—with up to 16 channels of audio
- Edit/Preview these files natively in RT without converting them
- Output timeline to any file type Premiere Pro supports, or use AJA file exporters for uncompressed QT, DPX, TGA, TIF, BMP, CIN, or YUV
- Output timeline to deck/device with device control
- 10 Bit RGB Rendering from inside Premiere Pro
- Hardware based RT Scaling, Crop, and Color Effects
- Up/down/cross convert timeline output (depends on KONA model)
- Video+Key output of RGBA source files from timeline (KONA 3 only)
- RED Workflow:
 - Convert r3d to DPX using REDCINE
 - Normal DPX workflow in Premiere/After Effects using AJA Plug-ins and KONA 3
 - RT Crop or Matte of RED 2K material to 2048x1080 for edit/output

After Effects® Plug-in

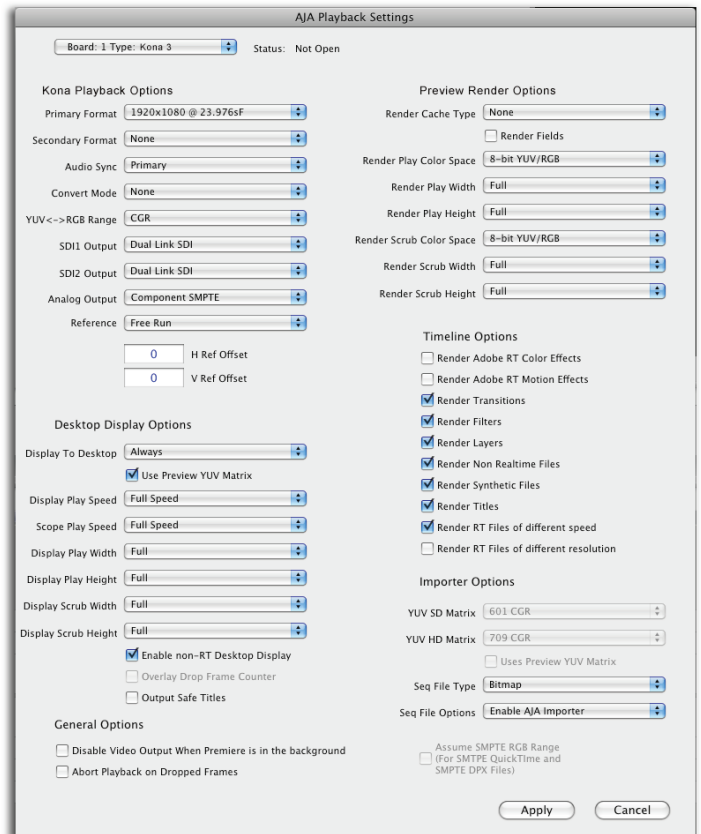
The AJA After Effects CS3 plug-in adds a display screen and preview functions to the After Effects CS3 application. The Preview plug-in screen allows you to view the current frame of your working timeline. Some features of the After Effects Plug-in include:

- Control output resolution to an external monitor
- Apply 1D LUT on KONA card output from After Effects to preview on an external monitor
- Up/Down/Cross Convert from inside After Effects to preview on an external monitor in a different resolution
- Import and Export to any of AJA's file exporters (QT, DPX, TGA, TIF, BMP, CIN, YUV)
- Video + Key output from After Effects (KONA 3 only)

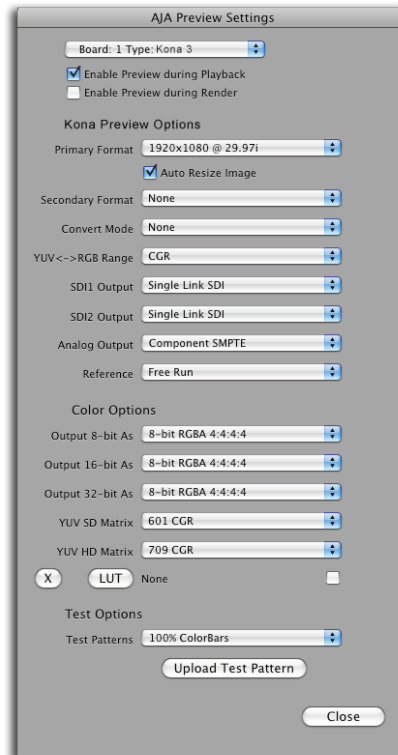
Photoshop® Plug-in

The AJA Photoshop plug-in is a software application that integrates into the Photoshop CS3 application, giving you powerful frame capture and preview functions. With Photoshop open, you can go to the File pull-down menu and select Import→AJA Capture to set up your workflow, source device control, and other KONA card options. Then access Export→AJA Preview Setup to configure the preview output on your monitor. Quick capture and simple send-to-preview functions are also available in these menus. Key features include:

- Deck control and Still frame capture inside Photoshop
- Preview Photoshop frame edits on a Professional broadcast monitor
- Import just one frame from your sequence for pixel level touchups and preview them as you make the changes
- Output Video + Key from Photoshop to broadcast mixer/switcher (KONA 3 only)



Adobe Premiere® Pro AJA Plug-in Playback Settings



Adobe After Effects® Preview Settings



www.aja.com
530.274.2048
800.251.4224 US